

# RIVER LAKES CITY PARK

**Safe Trails Whitefish** is leading a multi-phase, multi-year project to design and build-out **River Lakes City Park**, which includes a key Whitefish River Trail segment. This park sits adjacent to The Springs assisted living and memory care facility and near Logan Health, Smith Fields, North Valley Music School, and growing neighborhoods. Springs residents currently rely on a nearby car-free path for daily walking and mobility, but proposed changes would introduce multiple vehicle crossings. This project will help protect and enhance safe outdoor access by planning a senior-friendly park and trail environment that improves quality of life for vulnerable residents while expanding recreational opportunities for the broader community.

**This project will deliver lasting community and economic benefits by expanding access to safe, inclusive, and connected outdoor recreation in Whitefish.** The park and trail will provide a car-free route for youth and families traveling to and from sports facilities, improving safety while encouraging active transportation. It will preserve the only remaining vehicle-free area adjacent to The Springs, which is essential for residents who are hypersensitive to traffic and rely on calm, pedestrian-only environments. By linking City Beach, Smith Fields, and nearby neighborhoods, the project strengthens connections to the Whitefish Trail and future regional trail systems, advancing long-standing community goals.

Thoughtful park design will create a welcoming outdoor space that supports physical activity, emotional well-being, and social connection for older adults, young families, and people living with physical or cognitive impairments.

## PROJECT TIMELINE

### PHASE I - PLANNING & ADOPTION

+ **Winter 2025/2026:** Community engagement, meetings with City Staff and Mayor, presentation to Bike/Ped committee, public comment to Park Board.

+ **Spring 2026:** Capture the LiDAR data and imagery needed to plan the park, route the trail, and design enhanced road crossings.

+ **Summer 2026:** Finalize concept plan

+ **Fall 2026:** Submit River Lakes Area Park and Trails Concept Plan to Park Board for adoption.

### PHASE II - BUILD-OUT

+ After adoption by the City's Park Board, Safe Trails Whitefish will foster the concept plan through into a River Lakes Park Master Plan, where it can then be bid out for construction and completion.

## PROJECT BUDGET

PHASE I - **Approximately \$70,000**

PHASE II - **TBD**

## WE NEED YOUR HELP

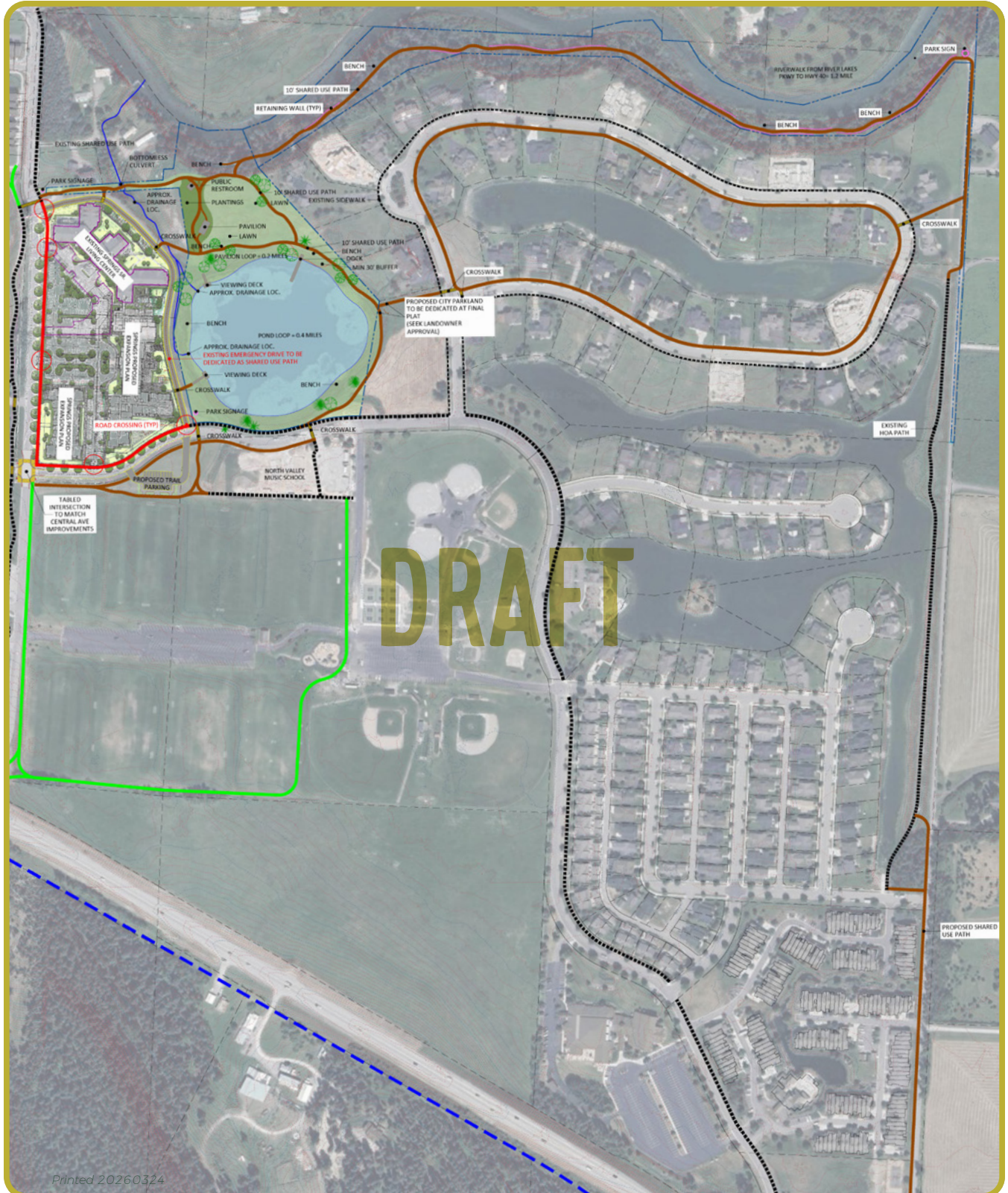
Safe Trails Whitefish is raising funds for multiple projects, including the completion of the Whitefish River Trail. Every dollar helps! Donate online at [safetrailswhitefish.com/donate](https://safetrailswhitefish.com/donate)



*All donations go to Outdoor Community Partners to support the Safe Trails Whitefish initiative.*

# RIVER LAKES PARK AREA & TRAILS CONCEPT PLAN

Creating a safe, connected, nature-based park for youth, families, and seniors in the River Lakes neighborhood.





## SAFE TRAILS WHITEFISH

Safe Trails Whitefish is a community partnership dedicated to completing a safe, connected multi-use park, trail and path system for all ages and abilities. We will support our paths and trails through community engagement and education; advocacy; technical assistance; and leadership. Safe Trails Whitefish is an initiative of Outdoor Community Partners, a Montana non-profit 501(c)(3) organization based in Whitefish.

### SAFE TRAILS WHITEFISH ADVISORS

<b>Bruce Boody</b>	<b>Casey Malmquist</b>	<b>Rachel Schmidt</b>
<b>Diane Conradi</b>	<b>Kate McMahon</b>	<b>Julie Tickle</b>
<b>Michael Fitzgerald</b>	<b>John Repke</b>	
<b>Richard Hildner</b>	<b>Jen Saucier</b>	

**JOIN US:** We invite you to be a part of completing one of Whitefish's most important community assets. We can't do this without your support. Every dollar helps move us from concept to construction. Together, we can move this project from vision to reality, segment by segment. *100% of the donations will go to Outdoor Community Partners to support the Safe Trails Whitefish initiative.*



**DONATE ONLINE**  
[safetrailswhitefish.com/support](https://safetrailswhitefish.com/support)

**Outdoor Community Partners**  
c/o Safe Trails Initiative  
PO Box 4585, Whitefish, MT 59937  
**Organization EIN: 92-2417749**  
406-730-7379

**SCAN TO DONATE**

Reach out to learn more about opportunities for legacy contributions, recognition, and naming.

### CORE PROJECT TEAM



**Diane Conradi**  
*Executive Director of Outdoor Community Partners*  
Project-lead, administrative, strategy, policy, legal, fundraising



**Rachel Schmidt**  
Public outreach, City liaison, community meetings



**Bruce Boody**  
Landscape architect, trail and park design, River Trail historian



**Jen Saucier**  
Design, promotion, data sourcing, planning, project management



**Andy Evensen**  
Civil Engineer

### STAY INFORMED



Follow us on Instagram and Facebook @safetrailswhitefish



Sign up for our email list to get progress updates at [safetrailswhitefish.com](https://safetrailswhitefish.com)

