



# Cody Rodgers

Residential Construction  
General Contractor

2020



300  
Haryu

Take a Look!

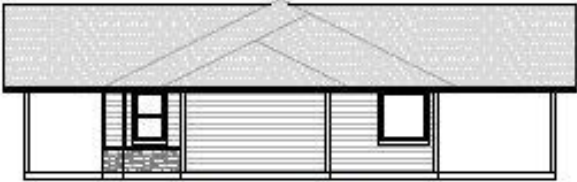
# Engineering



FRONT ELEVATION  
SCALE: 1/4" = 1'-0"



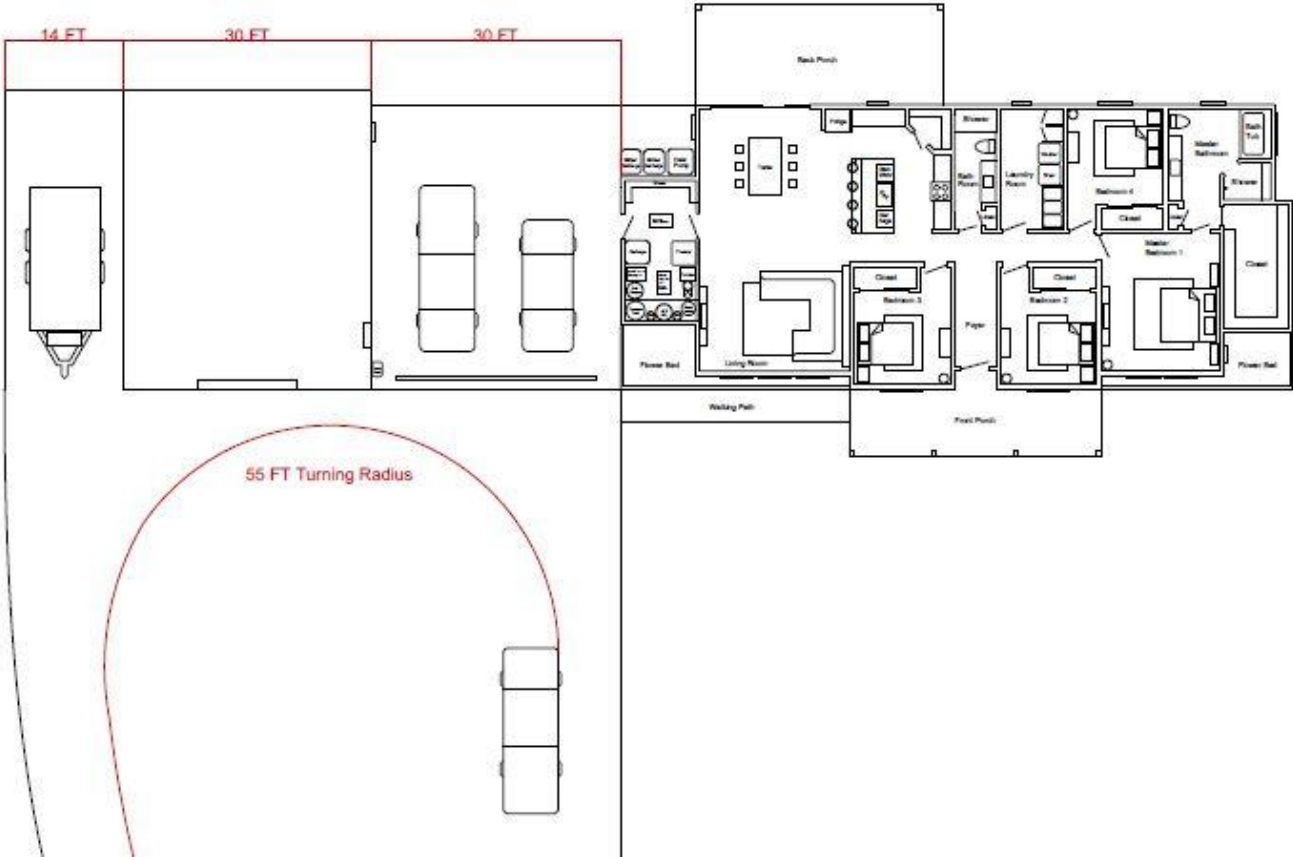
LEFT ELEVATION  
SCALE: 1/4" = 1'-0"



RIGHT ELEVATION  
SCALE: 1/4" = 1'-0"



REAR ELEVATION  
SCALE: 1/4" = 1'-0"



# Breaking Ground!



# Foundation

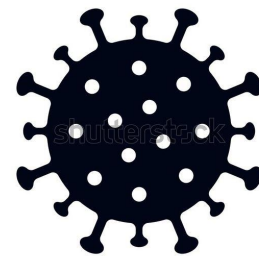


Then COVID-19!

Construction shut down

Manufacturing to 50% capacity

Lumber prices start rising.





## Floor and Wall Lumber Prices

April 2020	\$13,745
April 2021	\$82,470

May 2020 -  
Construction ban lifted  
Significant material delays  
Contractors rescheduled  
Shop construction begins

# Shop



Turn key structure by Centerstage Constr.

# House Framing



# Exterior Finish Work



# Utilities



Septic



Well



Power



# Rough in



# Guest Bath



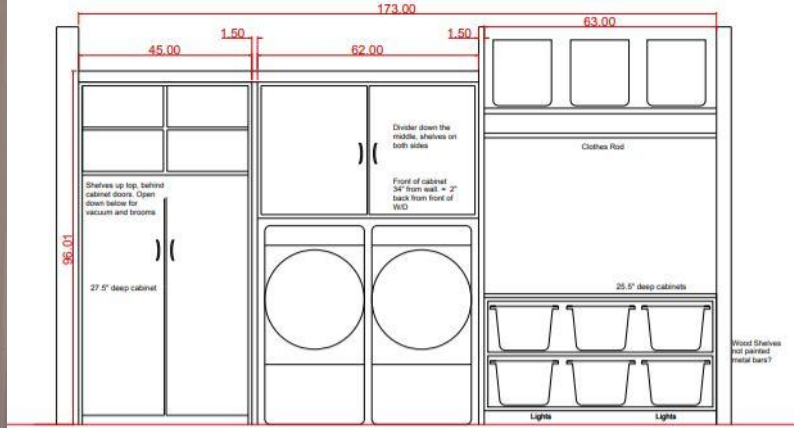
# Master Bath



# Kitchen



# Laundry Room



# Master Closet



# Finished Living Room



# Utility Room

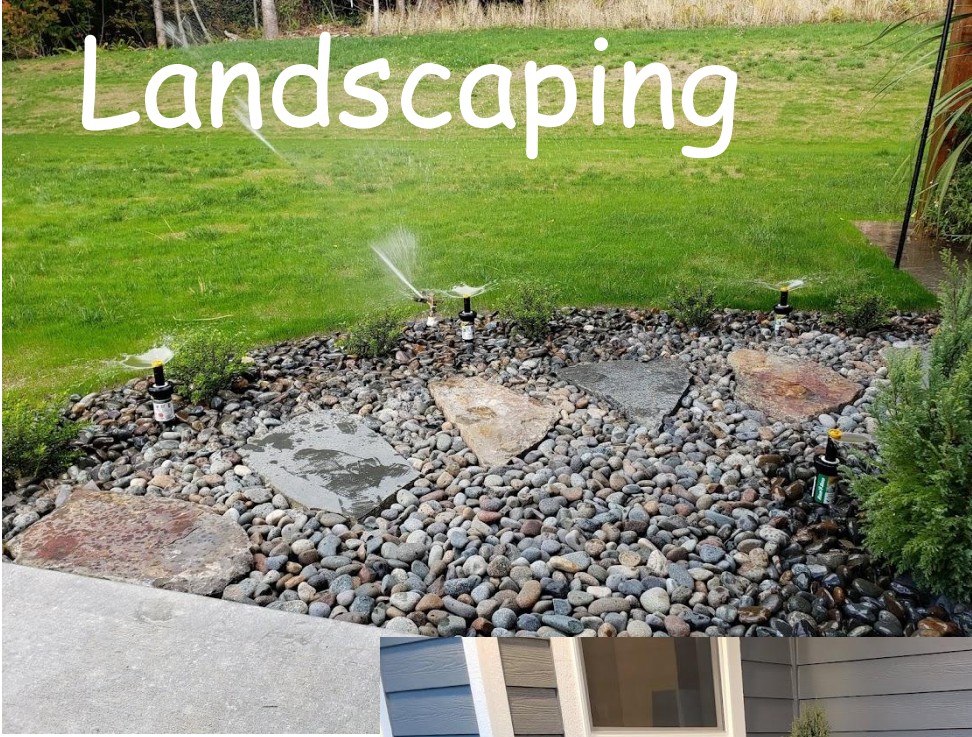


## Advantages

- No pump house maintenance
- Temp controlled equipment
- Location for network and security camera rack
- Crawl space access location
- Waterproof mud room



# Landscaping



# Concrete



# Sidewalk



# Key Takeaways!

- End-to-end project planning and execution
- Contractor coordination and stakeholder alignment
- Schedule development and resource allocation
- Risk assessment and mitigation
- Experience navigating market disruption and material shortages
- Adaptive decision-making navigating complex project challenges
- Quality assurance and construction oversight
- Leadership through accountability and ownership
- Successful project delivery despite significant external challenges

# From Vision to Reality



***THANK YOU!***