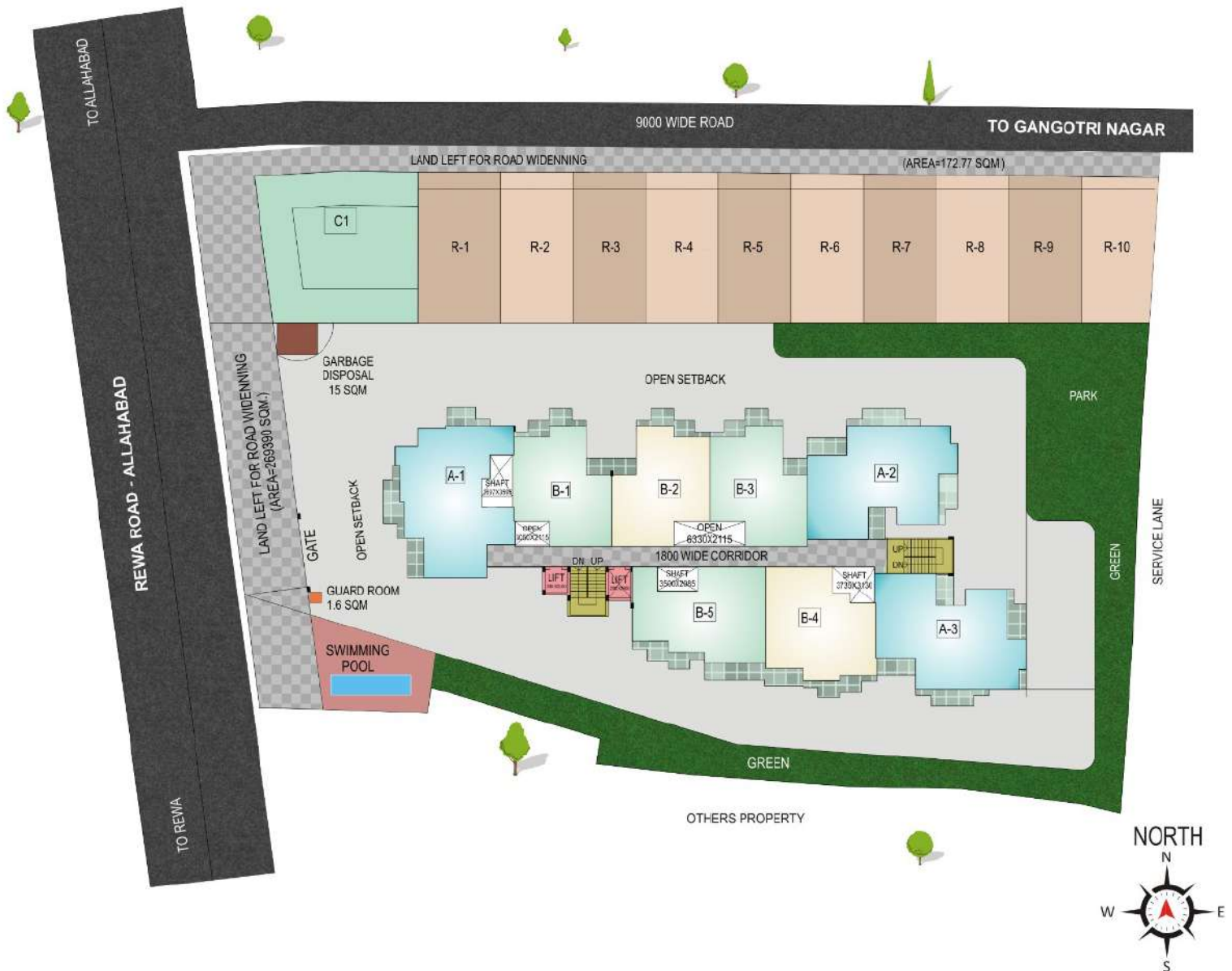




Luxury housing
at affordable prices

॥ श्री कालेश्वर धाम ॥
2 & 3 BHK LUXURIOUS HOMES

SITE LAYOUT



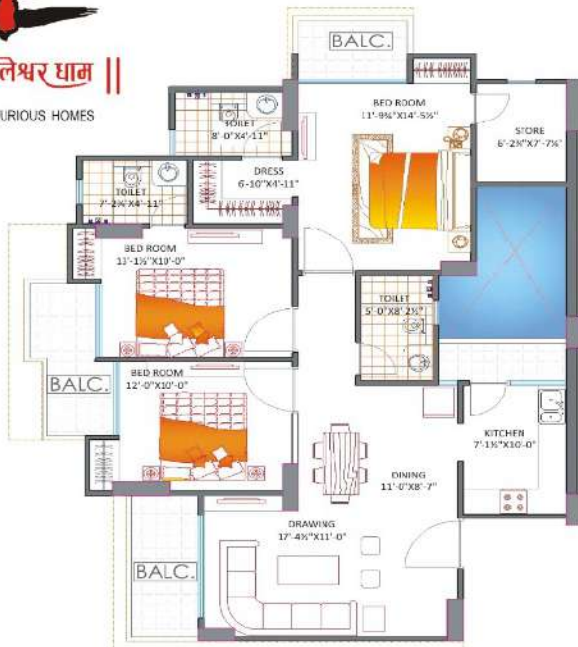


॥ श्री कालेश्वर धाम ॥

2 & 3 BHK LUXURIOUS HOMES

TYPICAL FLOOR PLAN

Sai Dham
GROUP



A-1

CARPET AREA	1011.51 sq. ft.
BALCONY AREA	179.44 sq. ft.
BUILT-UP AREA	1335.75 sq. ft.
SUPER BUILT-UP AREA	1540.09 sq. ft.



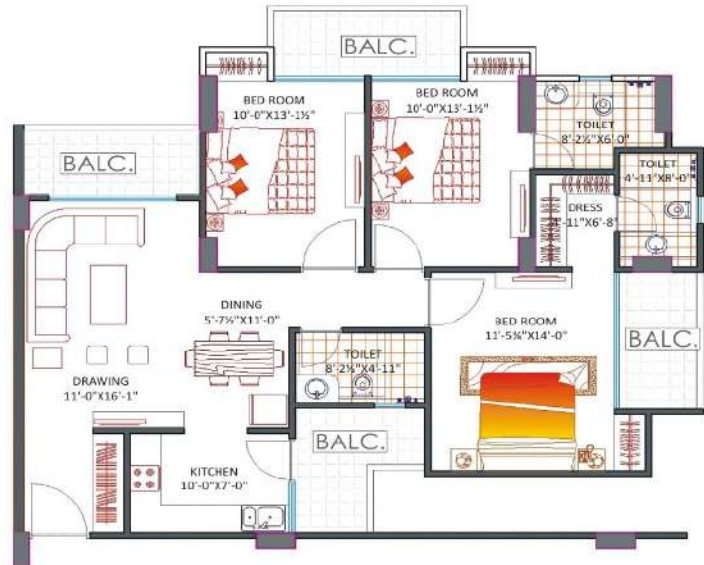
B-2

CARPET AREA	701.13 sq. ft.
BALCONY AREA	88.26 sq. ft.
BUILT-UP AREA	881.00 sq. ft.
SUPER BUILT-UP AREA	1015.77 sq. ft.



B-4

CARPET AREA	800.00 sq. ft.
BALCONY AREA	106.02 sq. ft.
BUILT-UP AREA	1005.00 sq. ft.
SUPER BUILT-UP AREA	1158.74 sq. ft.



A-2

CARPET AREA	974.05 sq. ft.
BALCONY AREA	199.03 sq. ft.
BUILT-UP AREA	1317.54 sq. ft.
SUPER BUILT-UP AREA	1519.09 sq. ft.



॥ श्री कालेश्वर धाम ॥

2 & 3 BHK LUXURIOUS HOMES

THE HEIGHT OF LUXURY IN THE HEART OF PRAYAGRAJ

Shree Kaleshwar Dham is a state of
the art iconic project by J M D Infraestate Pvt. Ltd.

(A Unit of Sai Dham Group)

where luxury & harmony comes together.

With an endeavor to focus towards property development &
management, this project has been created with an endeavor to
bring well developed residential projects, providing incomparable
value & flexibility.

Live life to the fullest and share the joys and happiness of
being together @ Shree Kaleshwar Dham



SALIENT FEATURES



- P.D.A. Approved.
- Earthquake Resistant R.C.C Framed Structure Designed by Qualified Structural Engineers.
- Fire Fighting equipment as per National Building Code (NBC) 2016.
- Rain Water harvesting.
- Single Gated Entry with 24x7 security systems, close circuit cameras along with EPABX System.
- 2 and 3 B.H.K. Spacious Luxury High End Finished/Semi Furnished Flats.
- Complete Equipped Modular Kitchen with Cooktop, Smoke Chimney & R. O. Water Filter.
- 7 Feet High 35mm thick internal doors and 8' Feet high 40mm thick Decorative external Main Door.
- Inverter wiring in Full Flat.

- Copper Piping for Air Conditioning and Star rated Split Air Conditioners available on additional attractive prices.
- Lifts: Gear less High Speed Automatic Door for passengers & Separate service Lift.
- Full Power Backup for Common Services.
- Reception Area/ Waiting Lounge for Visitors.
- Big Heavy Duty UPVC Windows floor to Ceiling Height.
- More Than 70% open Area.
- Jogging Track.
- Commercial Shop for daily use essentials.
- Club, Swimming Pool, Gym & Park.
- Basement & Stilt Reserve Parking for Residents and Visitors.

SPECIFICATIONS

LIVING/ DINING/ PASSAGE/ LOBBY

FLOOR	: Larger Size 800x800 Double Charged Nano Polished Vitrified Tiles.
WALLS	: Acrylic emulsion paint on Birla/JK wall putty punning on P.O.P base.
CEILING	: Acrylic Emulsion paint with POP cornices.

BEDROOMS

FLOORING MASTER BED	: Laminated Wooden Flooring of AC-4 Grade – 12mm.
FLOORING BEDROOMS	: Double Charged Nano Polished Vitrified Tiles 800x800.
WALLS	: Acrylic emulsion paint on Birla/JK wall putty punning on P.O.P. Base.
CEILING	: Acrylic Emulsion paint with POP cornices.

KITCHEN

WALLS	: Tiles up to 2'-0" above counter and Acrylic Emulsion paint in the balance area.
FLOOR	: Anti-Skid Vitrified Tiles / Double Charged Vitrified Tiles.
CEILING	: Acrylic Emulsion paint with POP Cornices.
COUNTER	: Granite Working Top.
FITTINGS / FIXTURES	: CP fittings of Jaquar with CPVC pipes and Single bowl SS Sink.
KITCHEN APPLIANCES	: Fully equipped Modular Kitchen with 3 Burner Cook top, Chimney, RO water filter system of pureit.

BALCONY

FLOOR	: Anti-Skid Tiles Vitrified Tiles
CEILING	: Exterior paint.
RAILINGS	: Steel Decorative Railings.

TOILETS

WALLS	: Combination of Tiles up to door level and Acrylic Emulsion paint in the balance area.
FLOOR	: Anti-skid Ceramic Tiles
CEILING	: Acrylic Emulsion paint

FIXTURES / ACCESSORIES	: Towel rail, Soap dish, glass shelves and Mirror of standard make.
SANITARY WARE/ CP	: Single Lever CP fittings, Wash Basin Table Top & WC wall hung, Health.
FITTINGS	: Faucet/Jet, of Jaquar/ Hindware/ Varmora.
PLUMBING	: CPVC piping for hot and cold water supply inside the toilets & UPVC pipes for stacks.
FIRE FIGHTING SYSTEM	: Fire Fighting System as per NBC 2016 norms.

STRUCTURE

Earthquake Resistant RCC Framed Structure Designed by Qualified Structural Engineers

DOORS

INTERNAL DOOR	: 35mm thick 7'-0" height Painted Hardwood frame with pre Laminated doors With Godrej Mortise Locks and Stainless Steel Hardware.
MAIN ENTRANCE DOOR	: 40 mm thick 8'-0" Polished Hardwood Frame with Prelaminated Doors with Godrej Mortise Locks and Stainless Steel Hardware.

EXTERNAL GLAZING'S

WINDOWS / EXTERNAL	: Energy Efficient, glass units with – Plain glass glazing' UPVC Ashai/Finnesta Window
EXTERNAL ELEVATION	: Weather proof External Paints.
ELECTRICAL FIXTURES	: Modular switches with copper wiring.
FITTINGS	: Led light fittings with all the piping only and wiring for AC.
SECURITY SYSTEM	: Secured Gated Community with access Control at Entrances with Security system along with C.C. Camera and EPABX systems for internal Communication.

STAIRCASES

FLOOR	: Granite/Marble with combination of steel railings
WALLS	: Acrylic Emulsion paint



JMD INFRAESTATE PVT. LTD.

A Unit of

Sai Dham
GROUP



OFFICE

12/16, Mayo Road, Prayagraj- 211001

SITE

Arazi No. 82, Dandi Rewa Road,
Near Dandi Post Office, Prayagraj-211008

E- Mail: saidhamrajesh@gmail.com

Web : www.saidham.co.in

Booking Contacts :

7991278888, 7518649999, 8081682310, 7309955559

Architect

Shivarpit Katoch
Noida (U.P.)

Structural Designer

Revati Raman Singh (M.Tech St.)
New Delhi

The Information contained herein has been obtained through source deemed reliable but cannot be guaranteed as to its accuracy. Any information of special interest should be obtained through independent verification.

UP RERA Reg. No. (Promoter) : UPRERAPRM133848

UP RERA Reg. No. (Project) : UPRERAPRJ

LOCATION

