

Ultra Luxury Apartments

cavalli

TOWER



Exclusive
Listing

cavalli

TOWER

WHERE STYLE REACHES NEW HEIGHTS

Cavalli Tower, with its views of the Palm, the Burj Al Arab, and the Marina skyline, is the epitome of luxurious life. These one-of-a-kind apartments, brought to you by Damac Properties, provide beautiful scenery, elegant design, and unrivaled water features all year long.

Unrivaled water features including artificial beach & private pools.

Cavalli Tower is conceptualised by Shaun Killa, an award-winning architect and designer.

World-class spas, numerous bars and restaurants, and a nearby waterpark.

ULTRA LUXURY APARTMENTS FOR SALE

High Floor
Private Swimming pool inside all Apartments
High end finishing
Best Views of the tower

2 B/R Apartment

Size: 276.55 Sq.M (2,976 Sq. Ft.)

3 B/R Apartment

Size: 329.44 Sq.M (3,546 Sq. Ft.)

3 B/R Apartment

Size: 333.68 Sq.M (3,591 Sq. Ft.)

Payment System:

46% downpayment

3 years payment plan



Prices:

2 B/R

AED 11,730,000

On Payment Plan 3 years

3 B/R

AED 13,718,000

On Payment Plan 3 years

3 B/R

AED 13,543,000

On Payment Plan 3 years

cavalli

TOWER



PAYMENT PLAN

Description	Milestone Event	(%) Value
Deposit	Immediate	15
1st Installment	Within 3 months from sale	5
2nd Installment	Within 6 months from sale	5
3rd Installment	Within 9 months from sale	5
4th Installment	Within 12 months from sale	4
5th Installment	Within 15 months from sale	4
6th Installment	Within 18 months from sale	4
7th Installment	Within 21 months from sale	4
8th Installment	Within 24 months from sale	4
9th Installment	Within 27 months from sale	4
10th Installment	Within 30 months from sale	4
11th Installment	Within 33 months from sale	4
12th Installment	Within 36 months from sale	4
13th Installment	Within 39 months from sale	4
14th Installment	Within 42 months from sale	4
15th Installment	On completion	10
16th Installment	Within 3 months from completion	4
17th Installment	Within 6 months from completion	4
18th Installment	Within 9 months from completion	4
19th Installment	Within 12 months from completion	4
		100

DAMNAG

ULTRA
LUXURY

CAMALLI



Exclusive
Listing



Exclusive
Listing



Exclusive
Listing



Exclusive
Listing

DAMAC
cavalli
TOWER



 Exclusive
Listing

DAMAC
cavalli
TOWER



 Exclusive
Listing

DAMAC
cavalli
TOWER



 Exclusive
Listing

DAMAC
cavalli
TOWER



 Exclusive
Listing

DAMAC
cavalli
TOWER



DAMAC
cavalli
TOWER



 Exclusive
Listing

DAMAC
cavalli
TOWER




Exclusive
Listing

LANDMARK GROUP

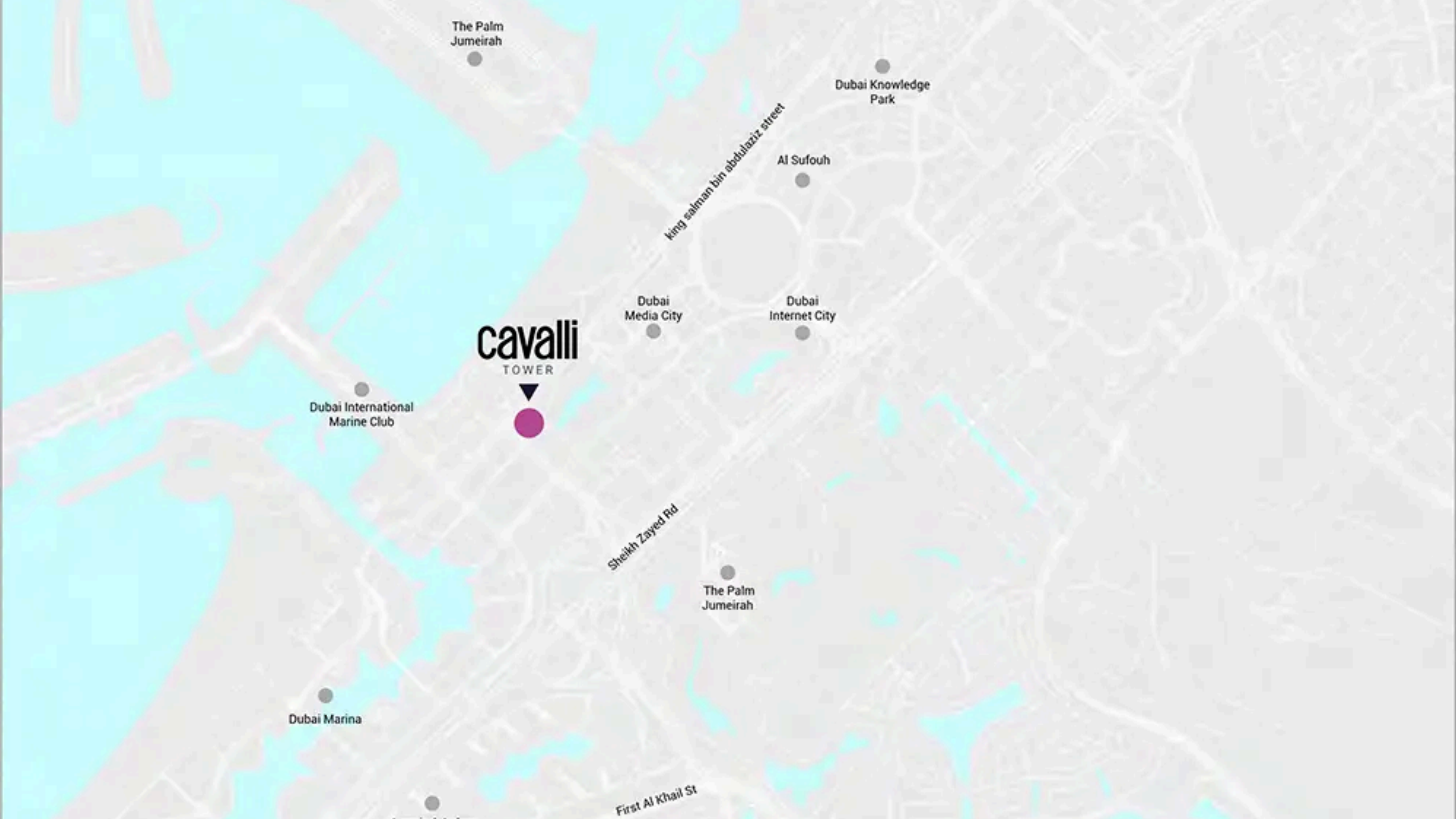
DAMAC
cavalli
TOWER



 Exclusive
Listing



Location



The Palm Jumeirah

Dubai Knowledge Park

King Salman bin Abdulaziz Street

Al Sufouh

cavalli
TOWER

Dubai Media City

Dubai Internet City

Dubai International Marine Club

Sheikh Zayed Rd

The Palm Jumeirah

Dubai Marina

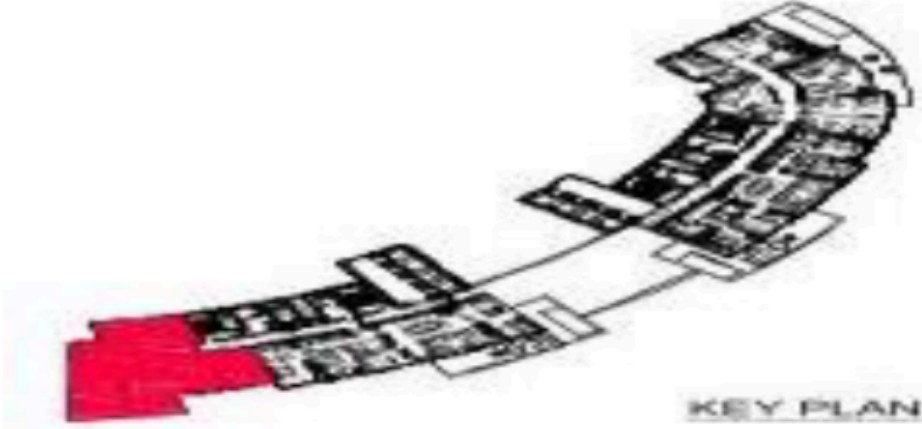
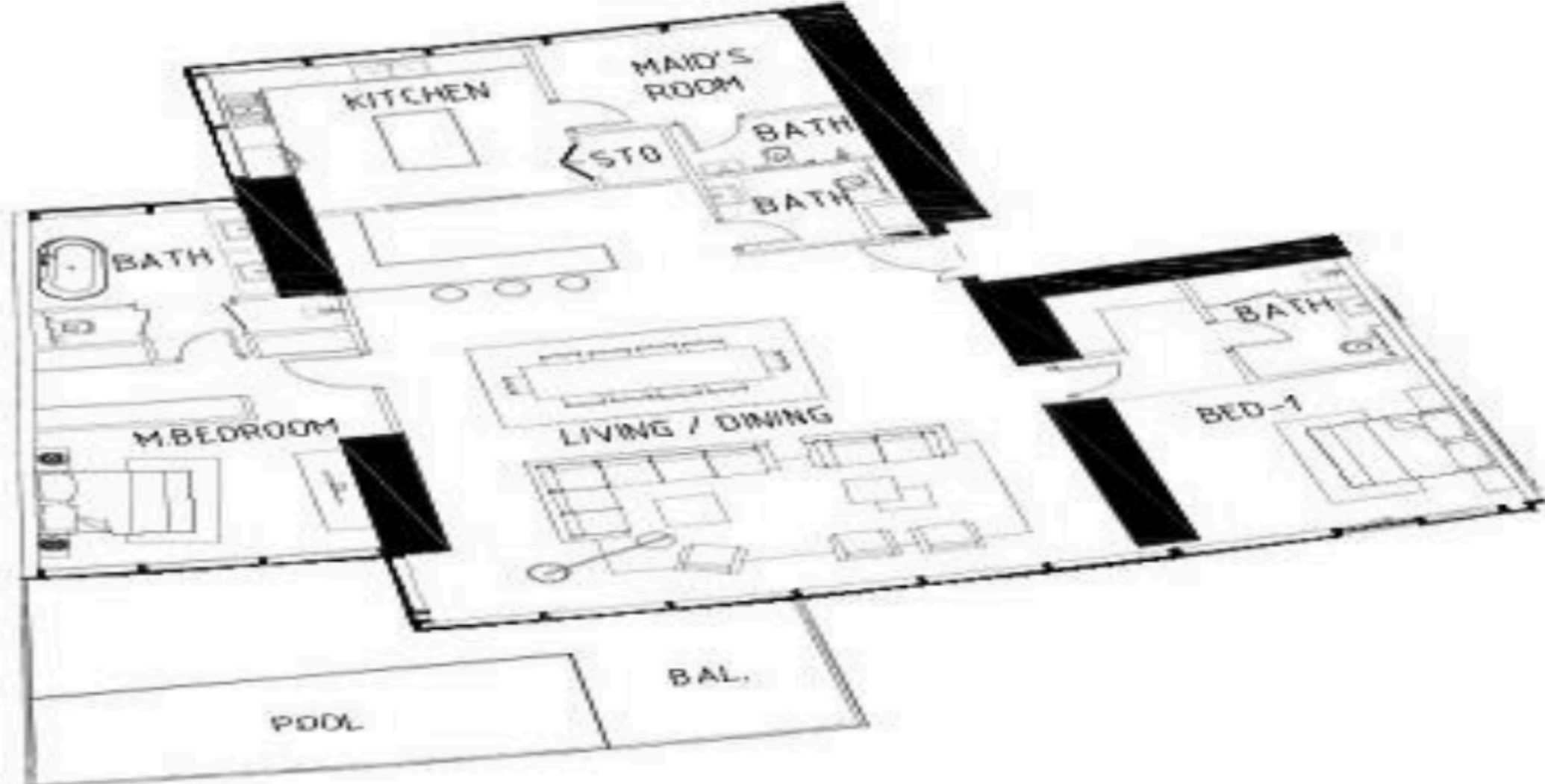
First Al Khail St

The image shows a 3D architectural rendering of a dome's interior. The dome is constructed from numerous overlapping, curved panels that create a complex, layered structure. The lighting is dramatic, with strong highlights and deep shadows, emphasizing the three-dimensional quality of the design. In the center of the dome, there is a solid purple square. The text "Floor Plans" is overlaid on the lower part of the dome in a white, sans-serif font.

Floor Plans

2 B/R Apartment

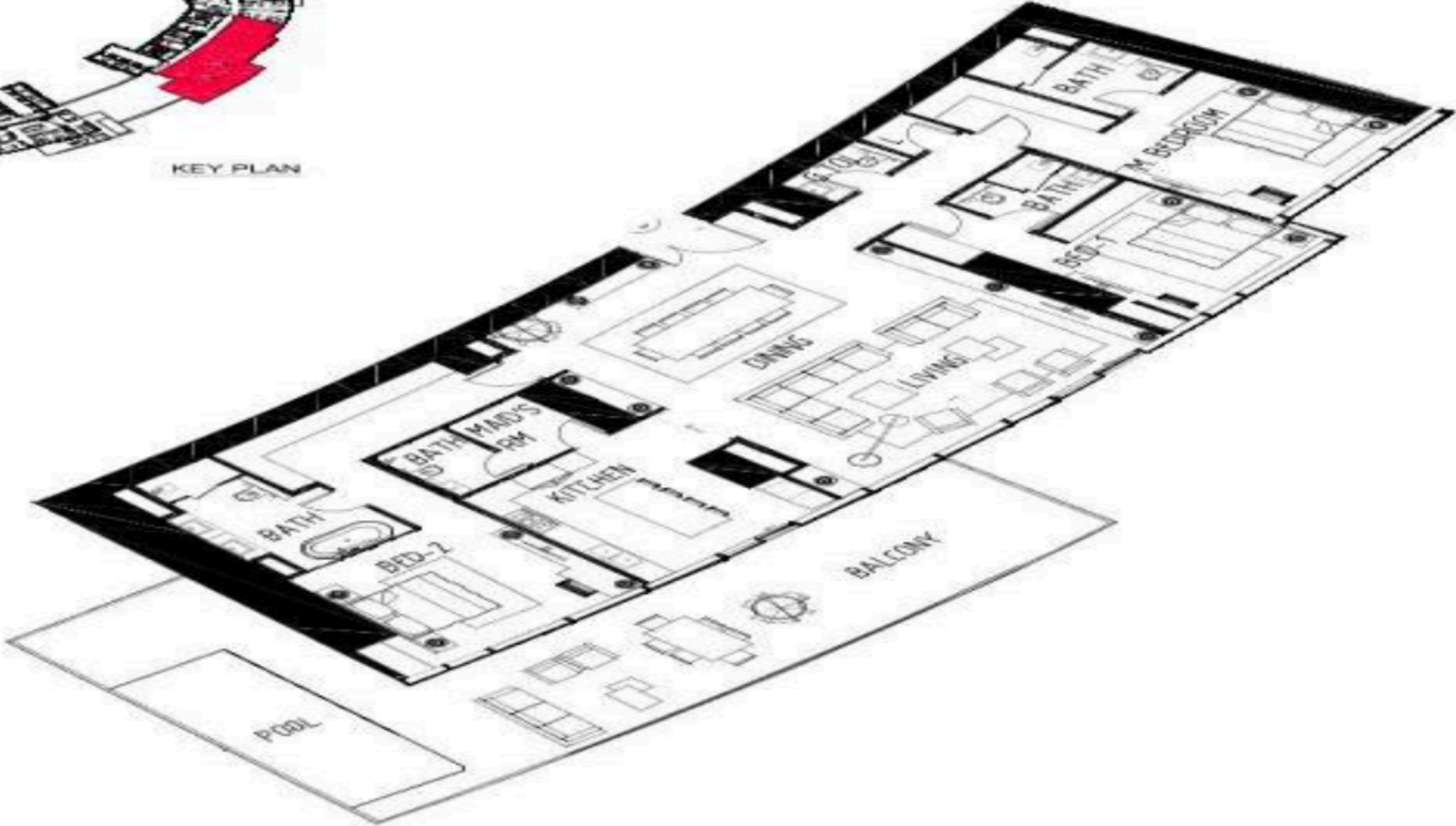
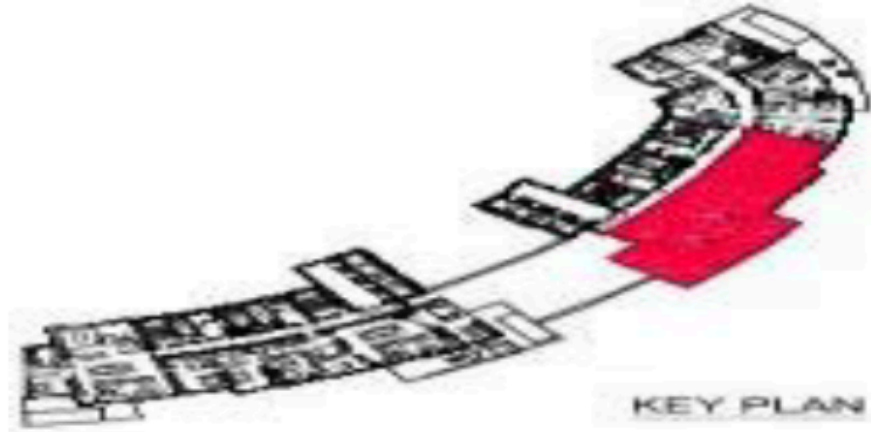
Size: 276.55 Sq.M (2,976 Sq. Ft.)



KEY PLAN

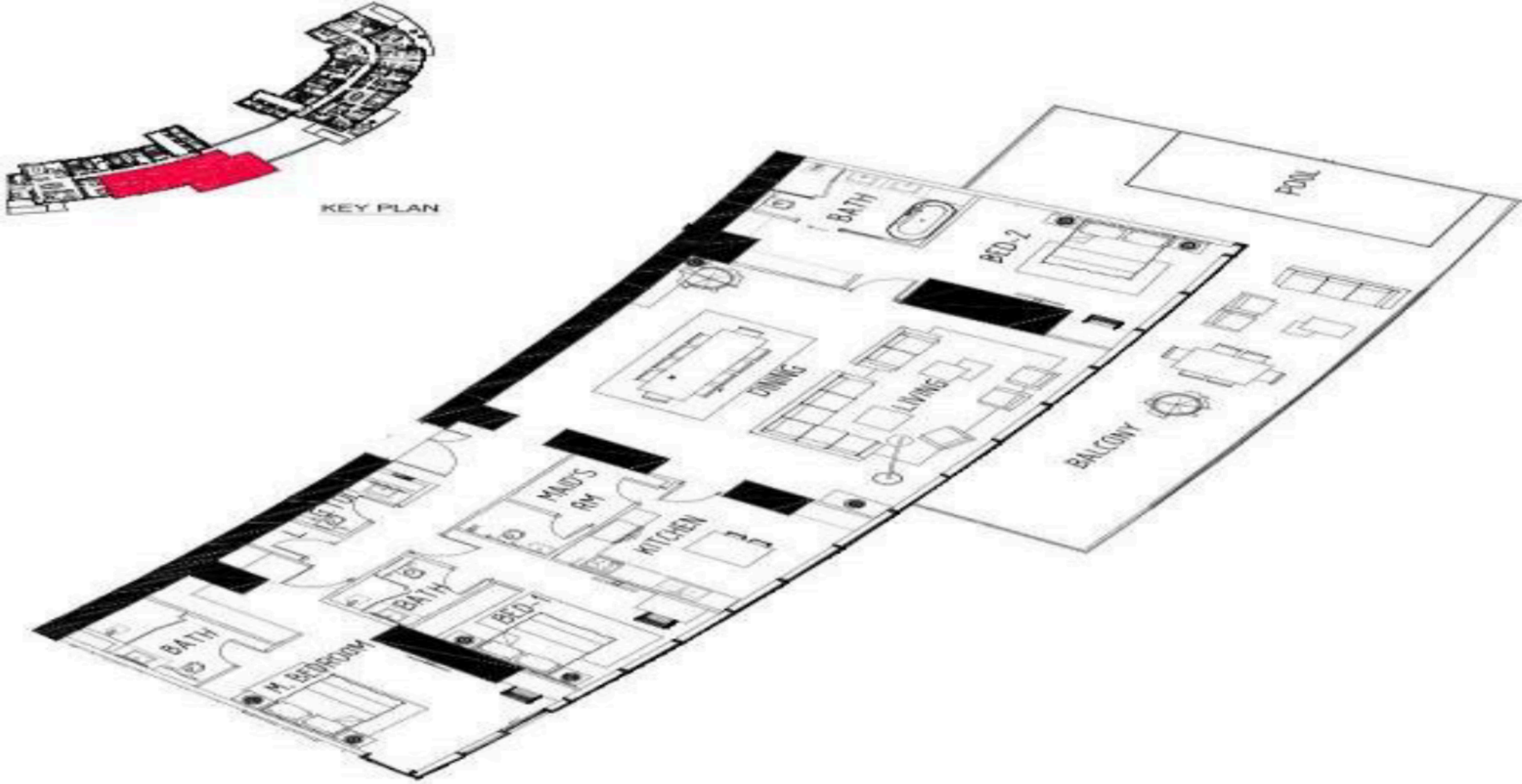
3 B/R Apartment

Size: 329.44 Sq.M (3,546 Sq. Ft.)



3 B/R Apartment

Size: 333.68 Sq.M (3,591 Sq. Ft.)





About the Company

About Us

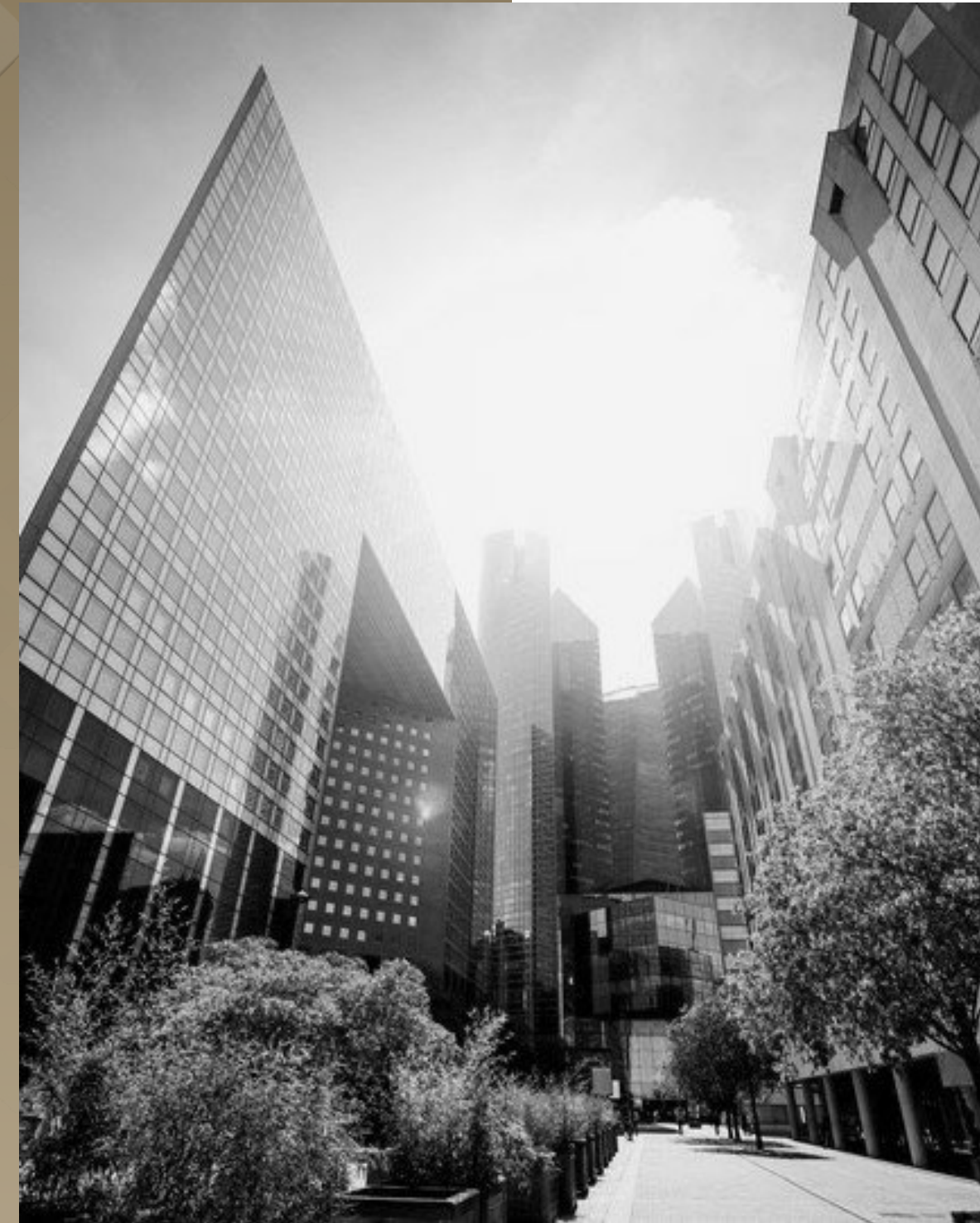


About Us

Strive to lead by example and provide memorable experience in every transaction, and our commitment to constantly empower consumers with data, inspirations, and market update, to enhance their investment knowledge and better-informed decisions.

Put together industry gurus to create something unique within the UAE real estate market, combining Data & cost analysis with in-depth market research to guarantee a service like no other in this increasingly competitive market.

A client focused organization; putting our customers first, a terminology that has been written in the books of many before, but never truly implemented in today's market. Giving EDITION the opportunity to rise through its clients it serves.





Our Services

Advisory

With our extensive experience in real estate market in Dubai our team of experts are always ready to provide the right market advice.

Analysis

We rely only on facts and figures, market research and forecasts are key factors in choosing the right next investment.

Asset Control

Our services are not limited to buying and selling but also includes full management services, long and short terms rentals in addition to facility management.

An aerial, black and white photograph of the Dubai skyline, featuring the Burj Khalifa as the central focus. The image is dark and atmospheric, with a white horizontal line extending from the left edge towards the center, partially overlapping the Burj Khalifa.

Thank You

Edition Real Estate

