

Logging in the Tilden area

Report on a meeting with Nipissing Forest Resource Management
November 7, 2024

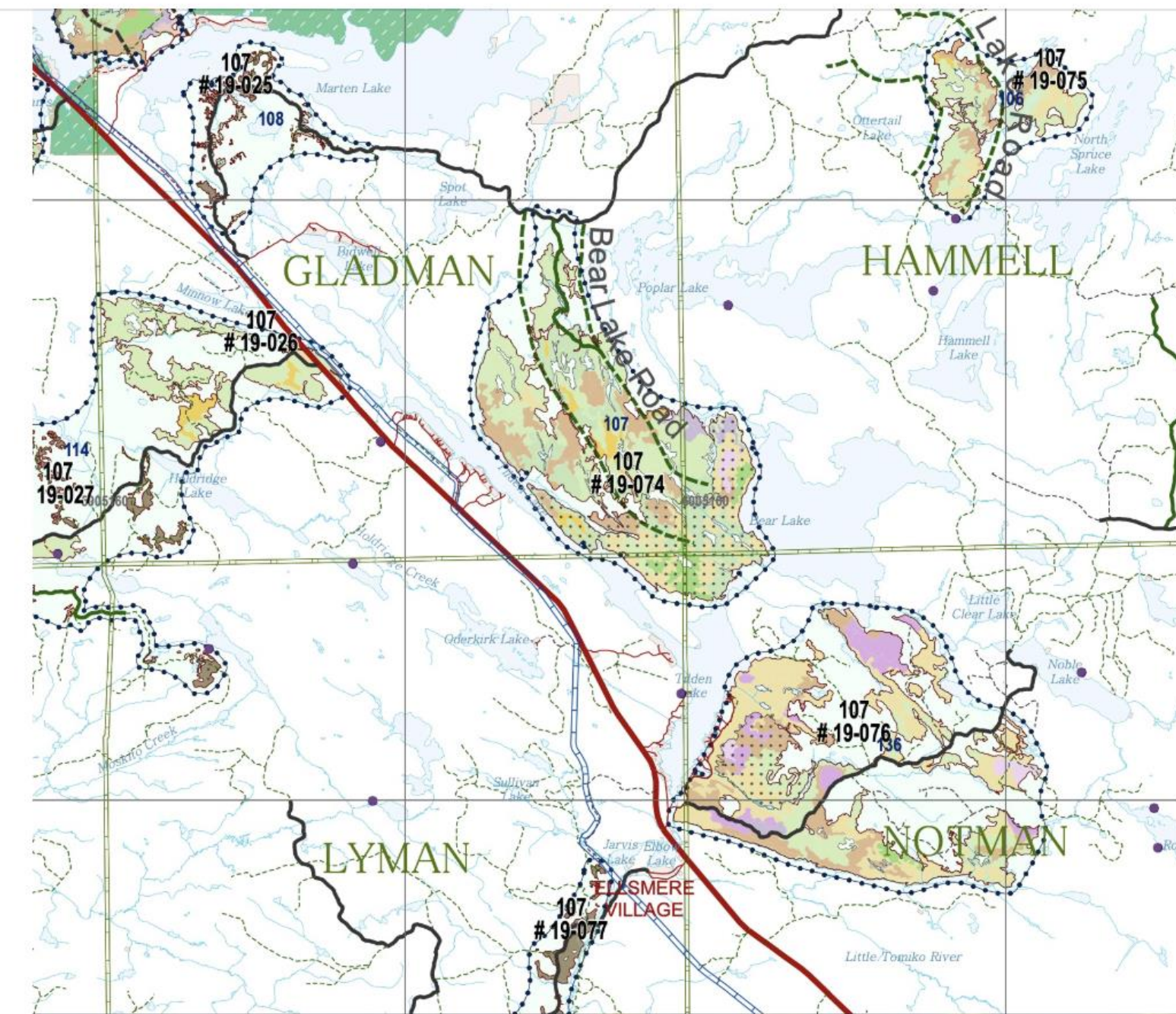
- * Last year Mike Beattie posted a portion of a map that showed potential logging in the Tilden Lake area.
- * I was interested so I did some digging (lived through this in the Kamiskotia area).



Mike Beattie

September 6, 2024 · 🌐

For anyone interested, this is the 2019-2029 Forest Management Plan with areas scheduled for logging.....different colours are different species.



👍 5

12 comments

- * Downloaded the 2019-2029 Nipissing Forest Management Plan
- * And had a very close look at the planning map.

Regular, Bridging and Contingency

All three are approved and COULD occur, however, in most cases only the Regular harvest occurs.

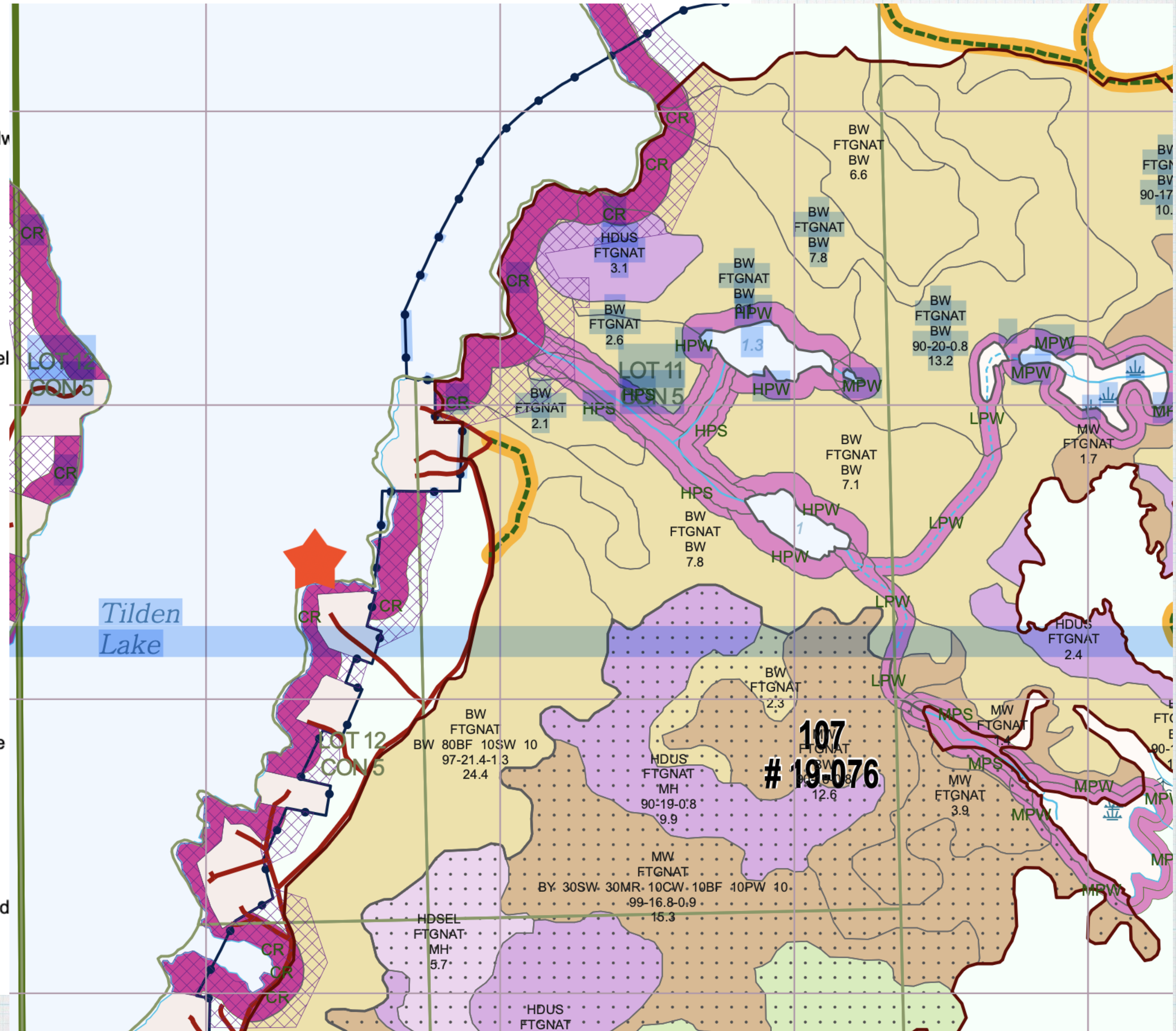
Think of Contingency harvest as alternate blocks that would be harvested if a Regular block became unavailable (fire, newly discovered values, weather constraints, market conditions, ...).

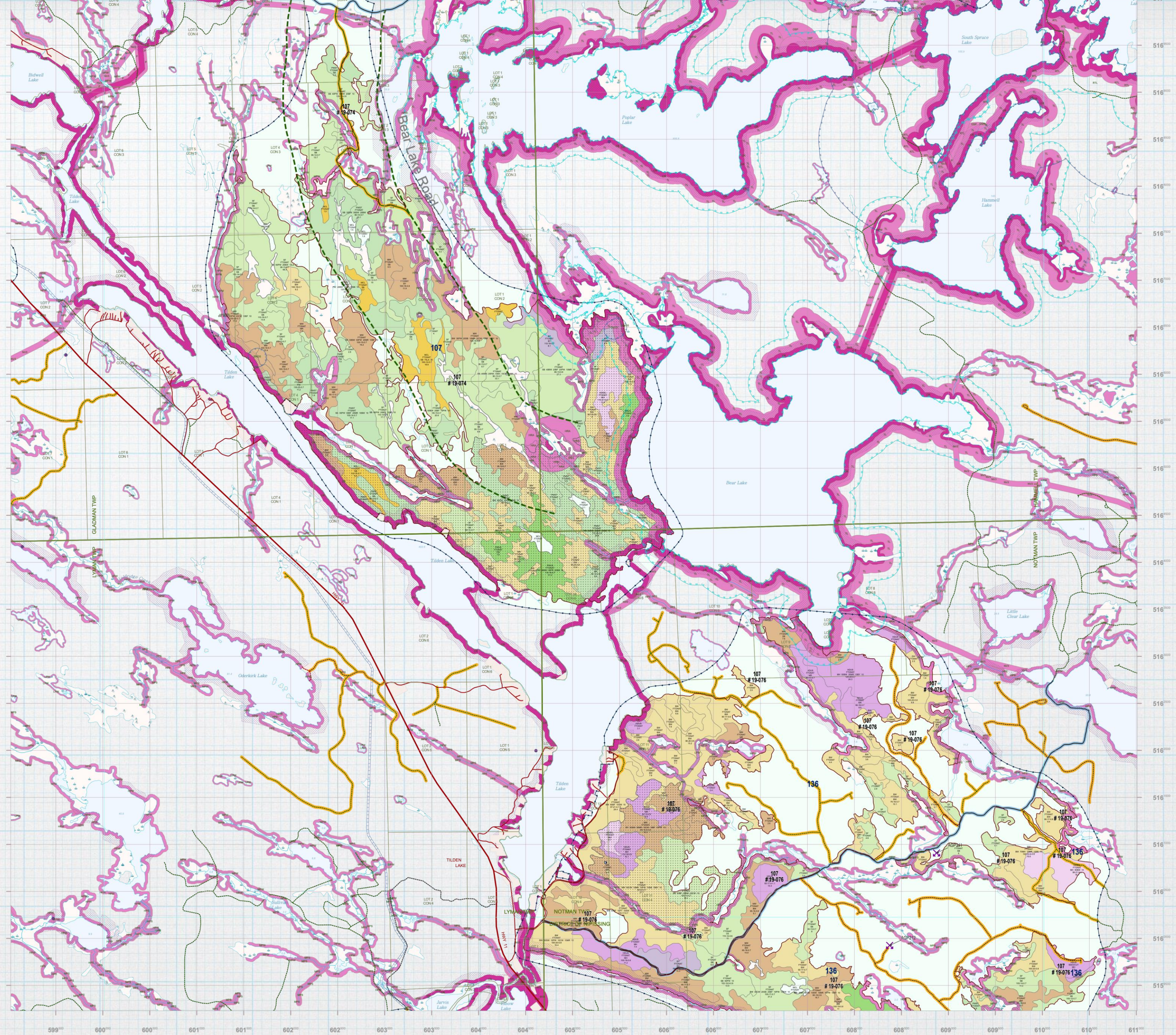
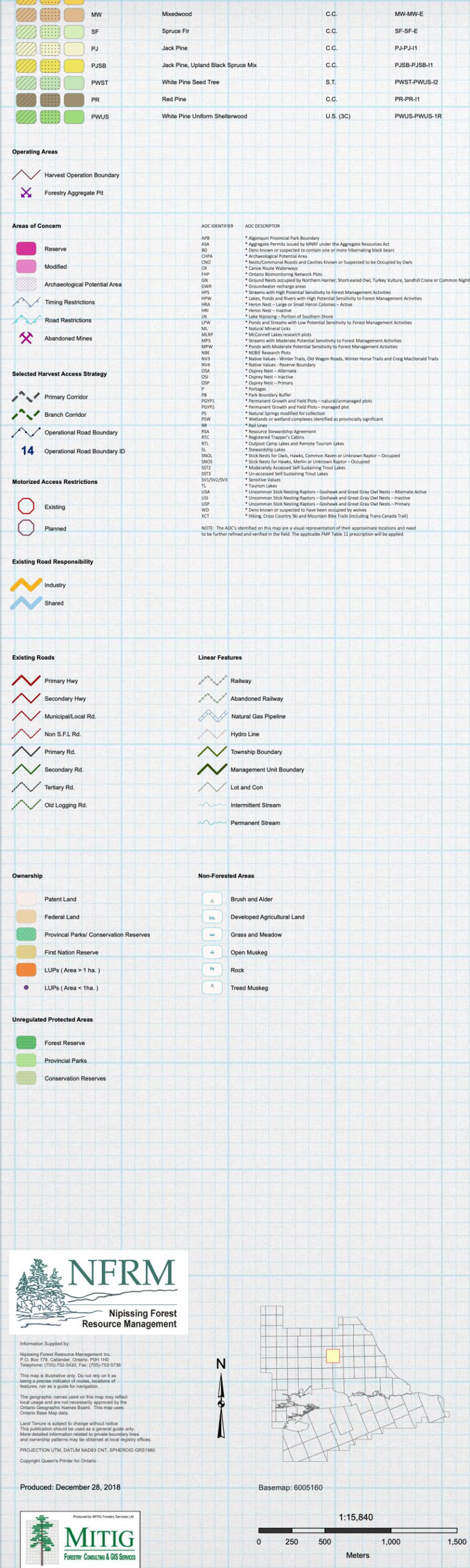
Bridging blocks are very rarely harvested. They are a 'safety measure' to allow harvest operations to continue in the event of a delay in approving the next 2029-2039 FMP. The Bridging blocks you see will in all likelihood appear as Regular blocks in the 2029-2039 FMP

It is extremely difficult to accurately predict when operations will occur on a specific block. There are just far too many variables. An AWS is prepared in the fall for operations that span the following year, April 1 to March 31.

Selected Harvest Allocations

Forest Units			Name
<i>Bridging</i>	<i>Contingency</i>	<i>Regular</i>	
			BW White Birch, Poplar, Other Hardw
			BY Yellow Birch
			PO Poplar
			HDSEL Tolerant Hardwood Selection
			HDUS Tolerant Hardwood Uniform Shel
			HE Hemlock
			LWMX Lowland Mixedwood
			MCL Mixed Conifer Lowland
			MW Mixedwood
			SF Spruce Fir
			PJ Jack Pine
			PJSB Jack Pine, Upland Black Spruce
			PWST White Pine Seed Tree
			PR Red Pine
			PWUS White Pine Uniform Shelterwood





Nipissing Forest Resource Management

- * Nipissing Forest Resource Management Inc. (NFRM) holds the Sustainable Forest License to manage the public lands on the Nipissing Forest Management Unit.
- * “Our core objective is to maintain and enhance the long term health and productivity of the Nipissing Forest, while providing environmental, economic, social, and cultural opportunities for the benefit of present and future generations.”
- * They provide information to the MNRF and the forest industry.
- * I met with Rick Hansel and Shelly Straughan on Nov 7/24

What I learned

- * NFRM consults with MNRF and forestry companies to create annual work schedules for Nipissing Forest.
- * Georgia Pacific holds licences for the area on the map, to harvest mostly small diameter poplar/birch/aspen for oriented strandboard mill in Engelhardt
- * Also possibly harvesting for a pulp and paper mill in Temiskaming — birch/maple

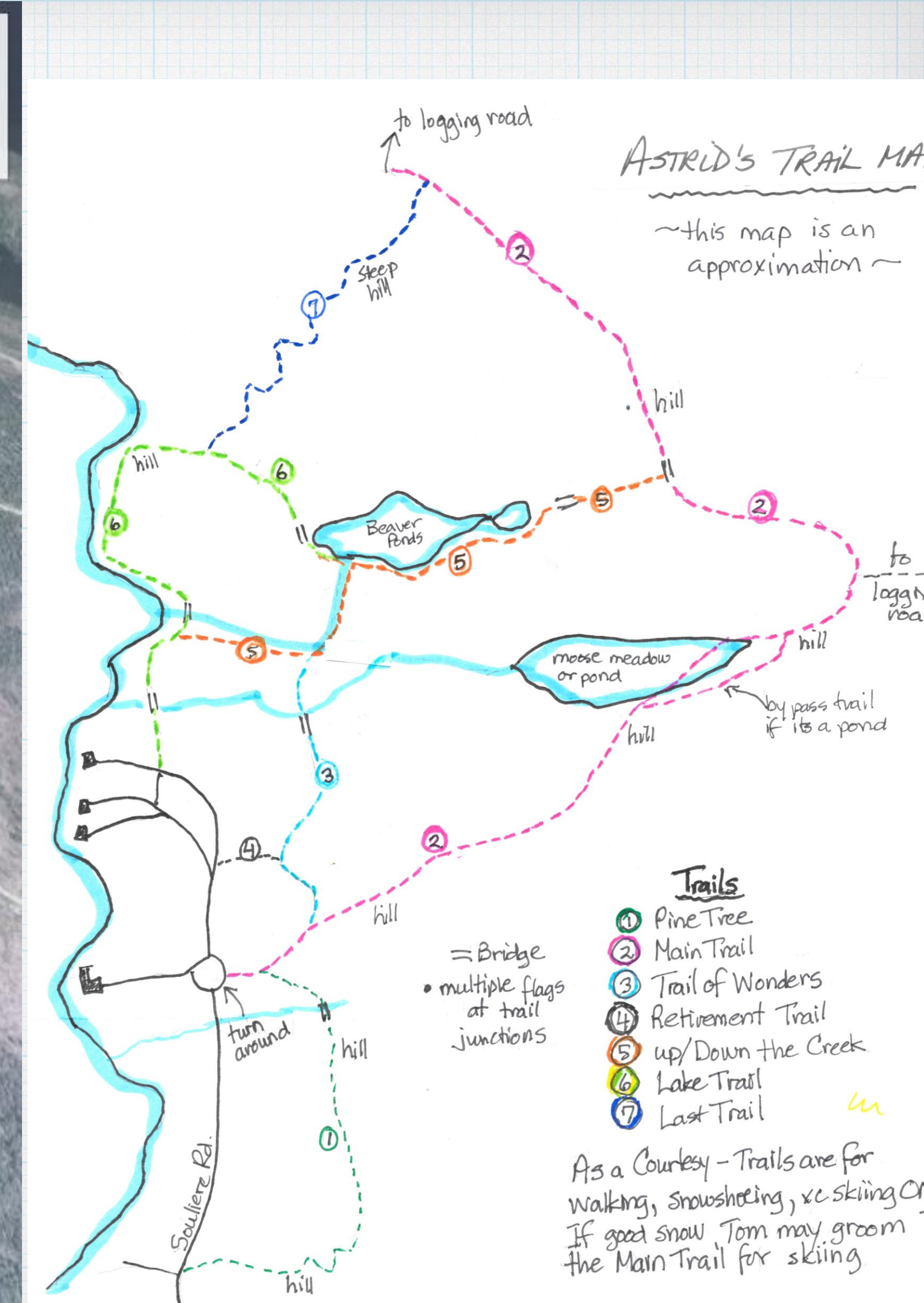
- * The logging companies like to use or upgrade existing roads / trails. That's part of the reason that this area has been identified — Noble Lake Road, Poplar Lake Road, etc. and the spur roads.
- * Unlikely to cut in the coming year.
- * There will likely be consultation with all stakeholders and communities in Fall 2026.
- * I'm on that list to participate and stay in the loop.

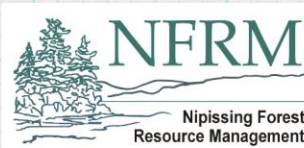
Values in our forest

- * We should keep track of and report all Values — to preserve the forest.
- * Hiking, snowshoeing trail networks
- * ATV trails for recreation and fishing
- * Aesthetic along the road - I don't want to see clearcut on Souliere Rd.
- * Don't want logging trucks on our roads - safety and road quality
- * Bear dens, hawk/eagle nests, etc. — report these

Untitled Map

Tilden Lake Trails





Information Supplied by:
Nipissing Forest Resource Management Inc.
P.O. Box 179, Callander, Ontario, P0H 1H0
Telephone: (705)-752-5430, Fax: (705)-752-5739

