

# THERMA CLASSIC™



- Since 1946 -

## Insulated Steel Carriage Style Garage Doors



*Model RX06S*

# NORTHWEST DOOR®

[www.NorthwestDoor.com](http://www.NorthwestDoor.com)

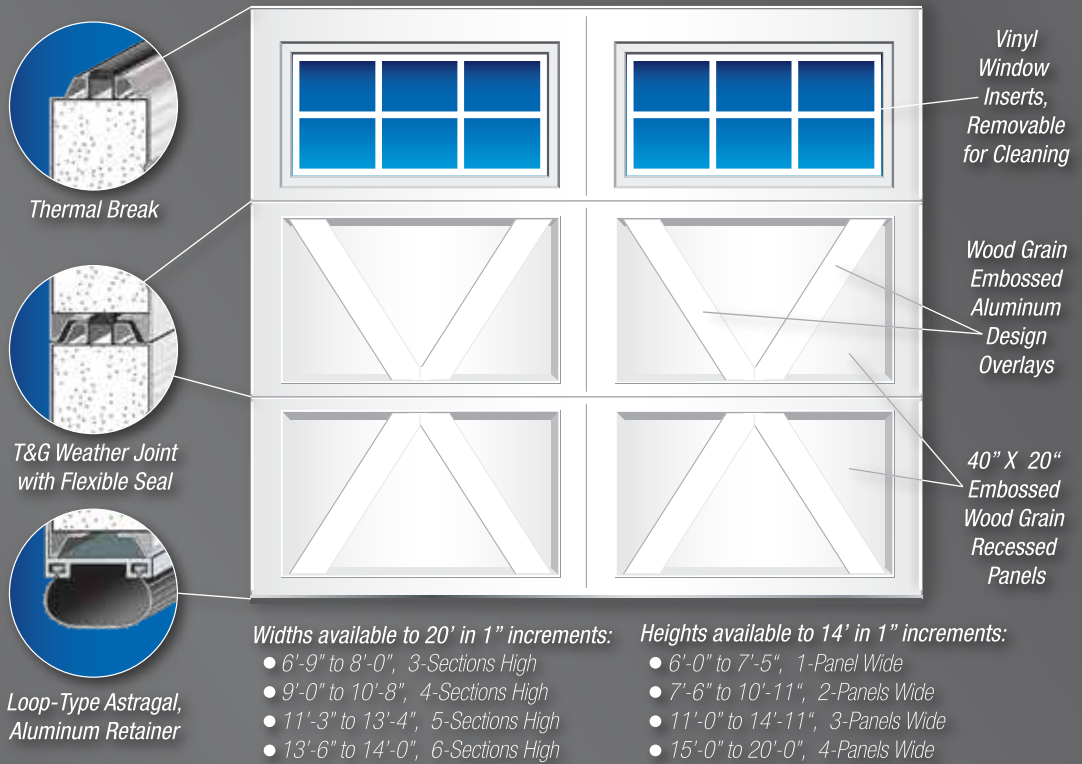
# Construction:

The beauty of the Therma Classic is more than skin deep. Therma Classic is built with Northwest Door's time proven sandwich-type construction method. Interior and exterior wood grain embossed, galvanized and prepainted steel skins are pressure laminated to a 2 inch thick (EPS) polystyrene core forming a natural thermal barrier or \*Thermal Break. *\*(A Thermal Break reduces the transmission of cold or hot air from one side of the door to the other.)*

A flexible seal is added at section joints to minimize air infiltration and improve energy efficiency.

The Therma Classic design overlays are made of prepainted wood grain embossed aluminum and are permanently attached and adhered

to the door face for unparalleled holding power. The result is an extremely strong and beautiful maintenance free garage door with outstanding insulating qualities with a rating of \*R-8.68. *\*(R Values are calculated specifically for the colder climates and offer the best long term insulating value)*

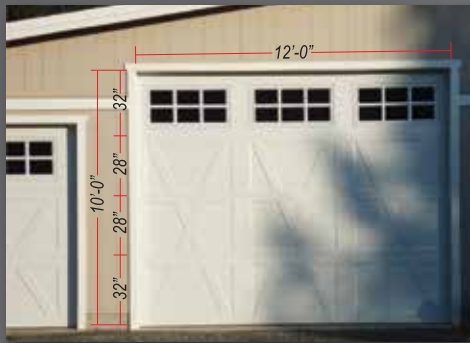


**Widths available to 20' in 1" increments:**

- 6'-9" to 8'-0", 3-Sections High
- 9'-0" to 10'-8", 4-Sections High
- 11'-3" to 13'-4", 5-Sections High
- 13'-6" to 14'-0", 6-Sections High

**Heights available to 14' in 1" increments:**

- 6'-0" to 7'-5", 1-Panel Wide
- 7'-6" to 10'-11", 2-Panels Wide
- 11'-0" to 14'-11", 3-Panels Wide
- 15'-0" to 20'-0", 4-Panels Wide



Therma Classic doors up to 8' high use only three door sections by utilizing a selection of 27", 28", 31" and 32" high sections. The designs maintain a uniform appearance even as the door size increases. Doors at left 3-section, 2-panel 9'x8' (3 - 32" sections) Model RX06S alongside 4-section, 3-panel 12'x10' Model RX06S (2 - 32" and 2 - 28" sections).

Our doors have a four coat paint protection system (1) galvanized, (2) bonderized, (3) primed and (4) Bright White Topcoat Finish. Doors can easily be field painted to match your exact color requirements. Dark color finishes are acceptable, however, if the installed doors face the sun the door surfaces should never reach an excess of 200°F. Metal Door Finishing Instructions are available for download at [www.NorthwestDoor.com](http://www.NorthwestDoor.com).

# Hardware Specifications and Hardware Options

## Specifications:

- 15" radius standard lift system
- 10,000 cycle oil tempered torsion springs
- 2" galvanized bracket mounted track
- 2" galvanized struts as size requires
- 2" 10-ball bearing nylon rollers
- 14 gauge galvanized hinges
- Double end hinges, long stem rollers on 18'-0" wide doors and over

## High Value Hardware Options:

- 12" radius, 20" radius, low headroom, follow roof line high lift and vertical lift hardware systems
- Extended Life Package, includes 25,000 cycle springs, 11 gauge hinges, heavier cables
- 3" industrial duty galvanized track & 3" ball bearing rollers\*
- 3" galvanized struts
- Heavy duty continuous and reverse angle mounted track
- Double end hinges & long stem ball bearing nylon rollers\*\*
- Decorative hardware
- Powder coated track and hardware system

\*Standard on all doors exceeding 575# (approximately 228 sq.ft.)

\*\*Standard on doors 18'-0" wide and larger

# Thermal Break Laboratory Testing

Reduced Heat / Cold Transfer By **15.5%**

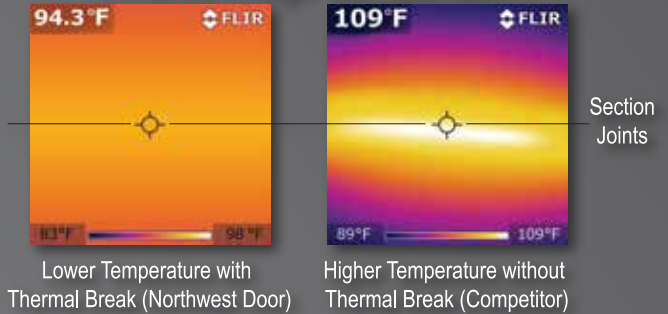
An independent laboratory performed a comparison test on the Northwest Door 2" thick Therma Series door and a competitor's insulated door. The competitor's door is typical of the industry standard for insulated garage door construction. Both doors were 2" thick, used identical EPS insulation cores and identical steel skins front and back, however the Therma Series featured Northwest Door's Thermal Break design.

After two hours of direct exposure to 135° Fahrenheit, temperatures were measured for thermal transmission from the front to the back of the door. The Therma Series measured 94° F as compared to 109° F on the competitor's door. This is a substantial 15.5% difference at the most critical area of the door - the section joints. The interior surface comparative temperatures of the center of the door panels were also sizeable, measuring 7.2% lower than the competition.

The reason for these large differences is that the Northwest Door Thermal Break does not have metal-to-metal contact from one side of the door to the other, like that of the competitor's door. This reduces the thermal transmission of the door, which improves its overall insulation value and effectiveness.

This study confirms that the Northwest Door Therma Series with Thermal Break dramatically outperforms other insulated garage doors, as shown by the actual infrared thermal images.

## Infrared Image Comparison



## Optional Glass

Therma Classic is standard with 1/8 inch clear tempered glass. We offer optional glass of many types such as annealed, insulated, obscure, tinted and custom glass 1/8 inch, 5/32 inch and 1/2 inch thick to meet your particular taste. For more glass options visit [www.NorthwestDoor.com](http://www.NorthwestDoor.com).



## Optional Decorative Hardware



Deco Kit B  
Malleable Iron  
Black Powder Coat Finish



Deco Kit C  
Stamped Steel, Crinkle Textured  
Black Powder Coat Finish

# Therma Classic's Attractive and Unique 3-Section Design

Historically, carriage house doors were swinging doors, made of wood and featured large windows in the upper portion of the doors. Northwest Door has authentically replicated this classic look with the Therma Classic. The Therma Classic is a high performance insulated steel garage door with conventional operating advantages.

It features a unique three-section design which permits taller windows in the door. This gives Therma Classic windows a more realistic representation of the original carriage house style swing doors.

Doors are available in a vast selection of sizes and beautiful designs, 88 window and panel configurations. Therma Classic doors are available in standard and odd sizes up to a maximum of 20 feet wide and 14 feet high using 27, 28, 31 and 32 inch high door sections. Unlike other metal carriage style doors, our designs maintain a uniform appearance even as the door sizes increase. This precision cannot be achieved with stamped steel garage door panels. Individual prepainted aluminum overlay design components are hand-crafted, fitted and secured to the recessed door panels. The aluminum overlays expand and contract at virtually the same rate as the door section, thus eliminating failure during varying temperature changes.



*Original Carriage House Door*

Unlike the plastic overlays used by some garage door manufacturers, the Therma Classic metal designs will hold their shape, stay in place and will not come off of your door..... "we guarantee it!".

## R3

### Designs

Model R308S shown. It features "3" stiles in each panel and 8-lite windows. The stiles on the "3" design are narrower than all other Therma Classic designs. Doors have standard Bright White factory finish.

Doors also feature optional decorative handles.



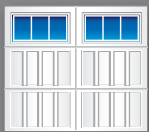
R300S



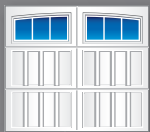
R301S



R302S



R303S



R303A



R304S



R306S



R306A



R308S



R308A



R309S



# RA

## Designs

Model RA03S shown. The Model RA03S doors feature "A" diagonal cross braces with 3-lite windows. They are standard factory Bright White.

These doors also have optional decorative handles to enhance the authentic appearance of old fashioned swing type doors.



RA00S



RA01S



RA02S



RA03S



RA03A



RA04S



RA06S



RA06A



RA08S



RA08A



RA09S

# R0

## Designs

Model R006S shown. The Model R006S has 40" wide, 20" high embossed recessed panels and have been field painted by others to match the home.

Doors also feature optional decorative handles and hinges.



R000S



R001S



R002S



R003S



R003A



R004S



R006S



R006A



R008S



R008A



R009S

# R1

## Designs

Model R106S shown. The Model R106S features "1" stile in each door panel and 6-lite windows.

The doors have standard Bright White factory finish.



R100S



R101S



R102S



R103S



R103A



R104S



R106S



R106A



R108S



R108A



R109S



# R2

## Designs

Model R206S shown. These doors have "2" stiles in each door panel and 6-lite windows. Both the single car and double car door are 8 feet tall with three 32 inch high door sections.

The doors have been field painted by others to match the home.



R200S



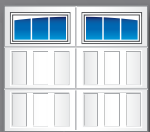
R201S



R202S



R203S



R203A



R204S



R206S



R206A



R208S



R208A



R209S



# RX

## Designs

Model RX09S shown. They feature the "X" configuration cross braces and attractive 9-lite windows. Doors have standard white factory finish.

Another RX design is shown on the brochure cover. They are the Model RX06S doors with 6-lite windows, Bright White finish and optional decorative handles.



RX00S



RX01S



RX02S



RX03S



RX03A



RX04S



RX06S



RX06A



RX08S



RX08A



RX09S

# RV

## Designs

Model RV03S shown. The Model RV03S features "V" diagonal cross braces with 3-lite windows. The doors have our standard Bright White factory finish and optional decorative handles.



RV00S



RV01S



RV02S



RV03S



RV03A



RV04S



RV06S



RV06A



RV08S



RV08A



RV09S

# Warranty:

## LIMITED LIFETIME WARRANTY



Therma Classic doors come with a limited lifetime warranty against delamination of the door skin, delamination of the overlay or deterioration due to rust-through for as long as you own your home. Parts and accessories are warranted against defects in material and workmanship for one (1) year. Contact your Northwest Door dealer for complete warranty, maintenance and painting instructions. Northwest Door reserves the right to make product changes without notice. Top section must be strutted on motor operated doors. **WARNING: Any adjustments to door should be made by an experienced garage door installer, such as your Northwest Door dealer. Serious injury can result from improper adjustments to your door.**



Before



After

Model RA08S

According to *Remodeling Magazine's Cost vs. Value Annual Reports*, year after year, a garage door replacement with upscale garage doors have continued to be one of the highest ROI's (*Return On Investments*) of all exterior remodeling projects.

After selecting your new garage door you should also consider adding additional value to your garage door with High Value Options. An Extended Life Package will extend the life span of your new garage door(s) and Decorative Handles and / or Hinges shown on Page 3 will enhance the door(s) exterior appearance.

Most garage door hardware is galvanized and has a shiny silvery finish. However, you can also further improve the appearance of your garage by selecting optional white Powder Coat Finish shown in the photo below. The hardware components are galvanized, however they have an additional layer of extremely durable powder coating. The white powder coat finish complements both the door's white interior skin as well as the window frames.



Garage door openers are also available. They are convenient and will extend the life of your new garage door as well. The Model 8500 residential wall mount opener shown at right is extremely quiet and features MyQ® technology, compatible with HomeLink®.



Visit NorthwestDoor.com to see the complete line of LiftMaster® garage door openers or ask your Northwest Door Dealer for more information.

Dealer Name:

Blank space for entering the dealer name.

**LiftMaster** Northwest Door recommends LiftMaster® Professional Line Garage Door Openers on all Northwest Door® garage doors.



**NORTHWEST DOOR**®  
Northwest Door, LLC  
19000 Canyon Road East - Puyallup, WA 98375-9746  
800-522-2264 www.northwestdoor.com