



The Rugby Club -The common

New Street

ST Neots

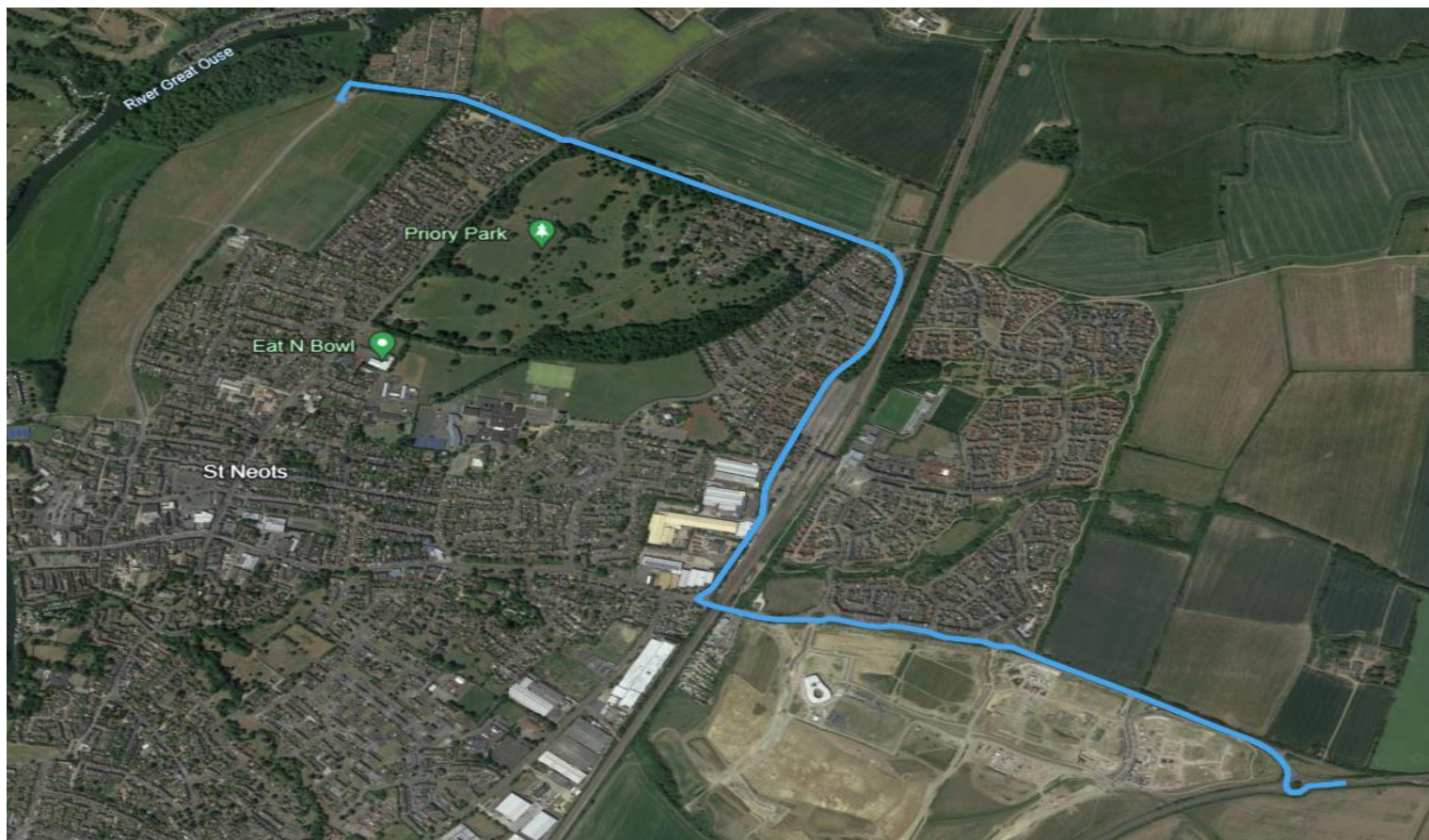
PE19 1RU

Cambs

**Welcome to St
Neots Town Youth
FC**

What Three Words Location:

<https://what3words.com/ideal.lawns.inflating>



From the North:

Heading south down the A1, take the first slip road which is signposted for St Neots, (onto the B1041). At the end of the slip road there is a T junction with the flyover. Turn left at the T junction and continue ahead. There will be a housing estate to your left and open fields to your right. Keep ahead until you see a building on the right, this is St Neots Tool Hire. On the other side of the road to St Neots Tool Hire is a T junction. Turn left into the T junction. Continuing ahead, you will cross 2 narrow brick bridges and the road will bear round to the right. After the second bridge you will come to a set of traffic lights.

Go straight over the traffic lights and continue ahead for 300 metres. The entrance to the St Neots Rugby Club will be on your left hand side

From the South:

Go North on the A1 over the Black Cat roundabout to the A428 East bound. Join the A428 (signed Cambridge) and at the next roundabout bear left towards Eaton Socon Keep on this road, towards St Neots. Go over the river Ouse and enter the market square. At the next junction turn left towards Little Paxton. The Club is approx 1 mile on the right.

From the East:

Heading west along the A428, after passing through Croxton you will come to a roundabout with St Neots signposted as the 2nd exit. Take the 2nd exit and continue ahead until you pass under a metal railway bridge (There is a builders merchant, Build Centre, on the left just before the bridge). Just the other side of the railway bridge there are 2 mini roundabouts. Turn right (2nd exit) at the first mini roundabout and continue ahead past the railway station. The road will bear round to the left and then descend sharply down a hill.

From the East Cont.

At the bottom of the hill are another couple of mini-roundabouts at a slightly offset cross roads.

You need to continue straight ahead over the mini-roundabouts. There will be a housing estate to your left and open fields to your right. Continue ahead until you reach a set of traffic lights. Turn left at the traffic lights and continue ahead for 300 metres. The entrance to the St Neots Rugby Club will be on your left hand side.



Parking

Please use areas marked in **green** for parking.
The area marked in **red** is strictly no parking both sides of the fence.

Blue is the overflow parking in the event that the green areas are filled.

Spectators

Spectators and coaches are asked to respect the FA guidelines. Spectators are asked to view the game from behind the respect barrier, not behind a goal or the coaches' side of the pitch. The coaches will have a designated technical area.

Pitches

Pitch 1 5 A Side

Pitch 2 7 A Side

Pitch 3 & 4 9 A Side

Pitch 5 & 6 11 A side

Photography/ Video

There may be instances when they are not permitted on site. Please can both managers be asked for permission.

For Emergencies

Nearest Defibrillator St Neots Rugby club (Call 999 for the code).

**A & E – Hinchingbrooke hospital Parkway
Hinchingbrooke Huntingdon PE296NT**

01480 416416



PLEASE REMEMBER

**THIS IS A GAME
THESE ARE CHILDREN
COACHES ARE VOLUNTEERS
REFEREES ARE HUMAN
MISTAKES WILL HAPPEN**

**AND LET CHILDREN MAKE THEIR OWN DECISIONS
DON'T TELL THEM WHAT TO DO WITH THE BALL
MISTAKES ARE LEARNING OPPORTUNITIES
PRIORITISE DEVELOPING THE PLAYER
OVER WINNING TODAY**

IT'S THEIR GAME, JUST LET THEM PLAY



Club Welfare Officers:
Laina Atkinson
cwo-stneotstownyouth@outlook.com

Email – info@stneotstownyouth.com

**Any other matters please speak to the
manager to acquire any other
information needed.**

Coffees & Hot Drinks			Make it your own		Frappes & Smoothies
Latte	REGULAR £3.80	LARGE £4.20	ICED £4.20	Blended with our signature #1 espresso blend	Frappes - £4.95
Vanilla Latte	£4.20	£4.70	£4.70	Coffee	Mocha
Cappuccino	£3.80	£4.20	-	Alternative milks 50p	Caramel
Hazelnut Cappuccino	£4.30	£4.70	-	Extra Shot 50p	White Mocha
Mocha	£4.10	£4.50	£4.50	Flavoured Syrup 50p	Smoothies - £4.70
Caramel Mocha	£4.40	£4.80	£4.80	Hardened 50p	For cold and delicious
White Mocha	£4.10	£4.50	£4.50	Squirty Cream 50p	Mango
Caramel Macchiato	£4.40	£4.80	£4.80	Prioni Syrup £1.00	Strawberry & Banana
Americano	£3.45	£3.85	£3.85		Pineapple & Passion Fruit
Flat White	£3.80	-	-		Milkshakes - £4.70
Espresso	£2.95	-	-		Choose your own to choose from below
Cortado	£3.45	-	-		Chocolate
Hot Coffees!					Strawberry
Spiced Chai Latte	£3.90	£4.30	£4.30		Banana
Matcha Green Tea Latte	£4.00	£4.40	£4.40		Matcha Green Tea
White Hot Chocolate	£3.95	£4.35	£4.35		
Hot Chocolate	£3.95	£4.35	£4.35		
Luxury Hot Chocolate	£4.75	£5.15	£5.15		
Tea	£2.95	£3.25	-		

