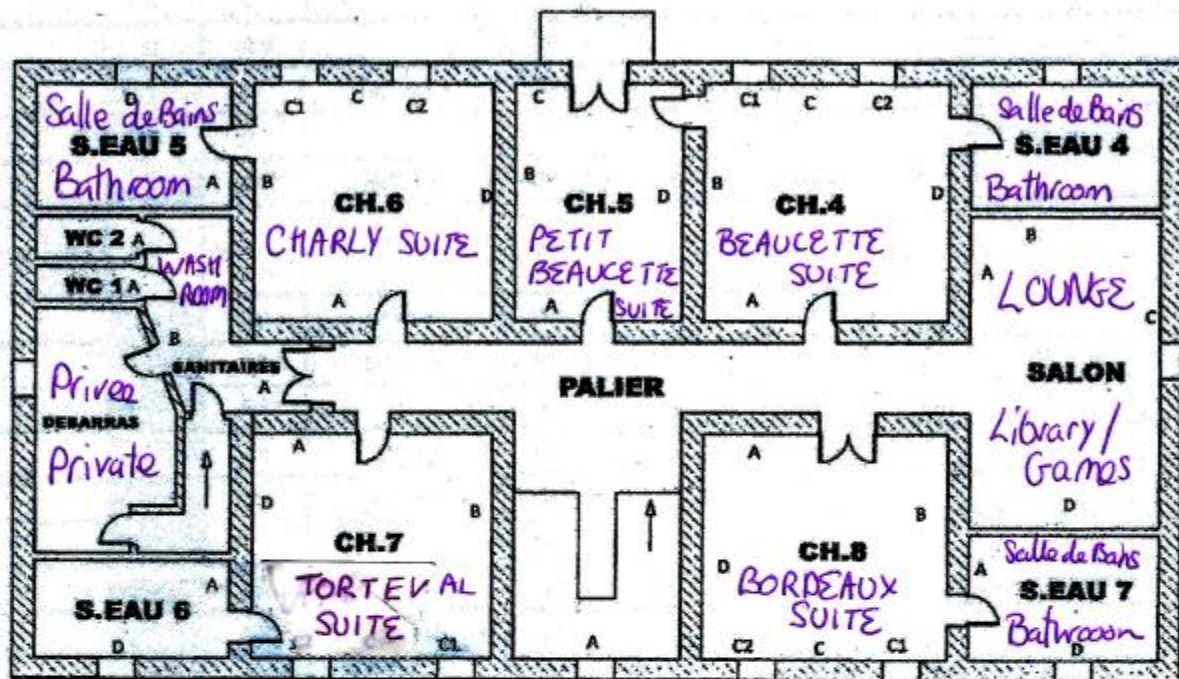
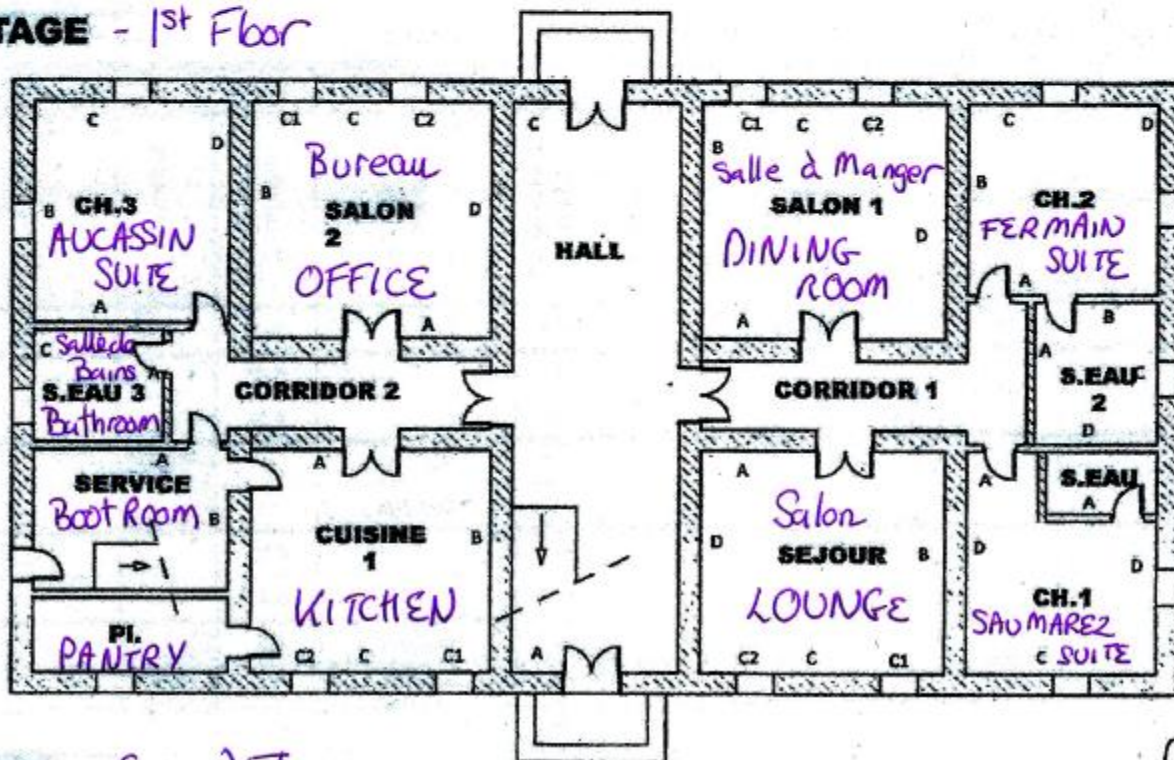


Chateau Charly Floor Plan

Château Charly Floor Plan



ETAGE - 1st Floor



RDC - Ground Floor

Notes:

Bureau/Office is private.

Bedroom Configuration

Bedroom	Beds	Bed Size (W x L)	Bathroom Facilities	Sleeps (*)	Comment (**)
1st Floor Bedrooms					
Bordeaux	1 x Eastern King	184 x 210 (6+ft)	Ensuite Shower and stand alone Bath	upto 2	Additional single (s) can be added
Charly	1 x Super King	180 x 200 (6ft)	Ensuite Shower and stand alone Bath	upto 2	Additional single (s) can be added
Beaucette (****)	1 x Queen Size	160 (62") x 190 (75")	Ensuite Shower and stand alone Bath	upto 2	Additional single (s) can be added
Petit Beaucette	1 x Continental Double	140 (56") x 190 (75")	Shares bathroom with Beaucette	upto 2	Additional single can be added
Torteval	2 x Continental Doubles	2 beds @ 140 (56") x 190 (75")	Ensuite Shower and stand alone Bath	upto 4	Additional single (s) can be added
Ground Floor Bedrooms					
Fermain	1 x King Size	150 (60") x 200 (78")	Ensuite Walk in Shower with shower bench and stand alone bath	upto 2	
Aucassin	1 x King Size	150 x 200 (5ft)	Walk in Shower and stand alone bath in Adjoining Bathroom	upto 2	
Saumarez	1 x Continental Double	140 (56") x 190 (75")	Ensuite XL Walk in Shower	upto 2	
Additional Beds - There are 2 single beds available that can be added to some rooms to add guests (***)					
single bed	1 x Single		Facilities depend on room it is added to		
single bed	1 x Single		Facilities depend on room it is added to		

Notes

* Chateau comfortably sleeps 16 children/adults (and upto 20 with 4 additional children upon agreement). Number of guests per room indicated is before adding single beds

**Comment refers to the bedrooms that are best suited to taking additional single beds or bed.

*** There are 4 single beds that can be added to the 1st floor bedrooms as required. In addition to the single beds there are also cots available

**** Beaucette and Petite Beaucette bedrooms are adjoined and share a bathroom – perfect for families

Our Suites

All our suites are beautifully proportioned with ample space to sit down and relax.

The ground floor suites all have walk in showers, ideal for intergenerational guests

CHARLY Suite



The large oak windows of the 1st floor Charly Suite look South West onto the Chateau front lawn with its beautiful specimen Cedrus Atlantica, (Atlas cedar) trees.

The adjoining en-suite bathroom is a luxury experience with its twin sinks, freestanding roll-top bath and spacious double shower cubicle. Enjoy the luxury of a bath designed for a relaxing soak whilst looking out of the large window onto the peaceful grounds of the chateau grounds.

The room is furnished with a massive Super King size (180 cm x 200 cm) four poster bed.

BEAUCETTE Suite



The Beaucette suite is decorated throughout in a delicate pink which reflects the light streaming through the large oak windows. The solid oak antique parquet floor frames the black marble fireplace which is adorned with an antique mirror. The room is furnished with a Queen size bed (160 cm x 190 cm)

The adjoining ensuite bathroom has a free standing roll top bath in the centre of the room where fantastic views of the grounds can be enjoyed. The spacious bathroom also has a large shower and double sinks.

The Beaucette suite has an internal door entry to the Petit Beaucette suite. This can be unlocked to provide a two bedroom family suite – perfect for young children.

PETITE BEAUCETTE Suite



The Petite Beaucette has splendid views across the front of the chateau and its window balcony is enrobed with the beautiful orange, trumpet shaped Campsis flowers.

The Petite Beaucette suite shares the Beaucette Suite bathroom and has an internal door entry to the Beaucette suite. This can be unlocked to provide a two bedroom family suite – perfect for young children. It is decorated in matching tones to the Beaucette suite and its solid oak antique parquet floor likewise frames a black marble fireplace. The room is furnished with a continental double size bed (140 cm x 190 cm).

The Petite Beaucette's bathroom has a free standing roll top bath in the centre of the room where fantastic views of the grounds can be enjoyed. The spacious bathroom also has a large shower and double sinks.

BORDEAUX Suite



The Bordeaux suite is decorated in sympathetic hues and style to its beautiful beamed ceiling and oak furniture. It is a room to relax in. Enjoy the views through the two large North-West facing oak windows of the splendid mature Beech, Oak and Plane trees in the rear of the Chateau and the traditional stone coach house adorned with grapes. Or stretch out in the exceptionally large bed which is California King (aka Eastern King) size (185 cm x 210 cm). In early summer the heavenly smell of the mature Linden tree can be enjoyed, similar to honeysuckle but far richer.

The roll top bath sits on a black polished stone floor which gives the bathroom an opulent feel and the bathroom's large window provides the perfect view to accompany a relaxing bath. The bathroom also has twin sinks and a separate spacious double shower.

TORTEVAL Suite



With a blue and white theme running through the Torteval suite, this suite is elegant and spacious. Take in the room's interesting features such as the old family safe housed in the wall. Enjoy the views through the two large North-West facing oak windows of the splendid mature Beech, Oak and Plane trees in the rear of the Chateau and the traditional stone coach house adorned with grapes. This suite is furnished with 2 continental size beds (140 cm x 190 cm).

Adjoining the room is a large bathroom with separate shower and bath.

AUCASSIN Suite



Light floods into the ground floor Aucassin suite through its double aspect windows, North-East and South-East facing, giving this room a particularly airy feel. The double aspect view showcases the avenue of wonderful mature trees and the beautiful specimen *Cedrus Atlantica*, (Atlas cedar) trees. The bed is King size (150 cm x 200 cm).

Adjoining the room is a large bathroom with separate walk in shower and stand alone bath.

FERMAIN Suite



The Fermain suite is beautifully situated on the ground floor with double aspect views of the Chateau park, South-East and South-West facing. The bed is King size (150 cm x 200 cm). The room features a black marble fireplace framed by an ornate papered wall and a head of Buddha from Sri Lanka.

Adjoining the room is a large bathroom with a stand alone bath and a separate walk in shower which has a shower bench – both with room for two! -perfect for junior and senior family members.

SAMAUREZ Suite



A light and airy ground floor room with its double aspect windows, South-West and North-West facing. The large North-West facing window looks onto the splendid mature Beech, Oak and Plane trees in the rear of the Chateau and the traditional stone coach house adorned with grapes. In early summer the heavenly smell of the mature Linden tree can be enjoyed, similar to honeysuckle but far richer. This suite is decorated in hues reminiscent of the colours of the earth that feature in traditional Provençal homes with its terracotta tiles and complementary shades of the bathroom tiles. The room is furnished with a continental double size bed (140 cm x 190 cm).

The ensuite bathroom has an XL size walk in shower and XL shower head – perfect for two!