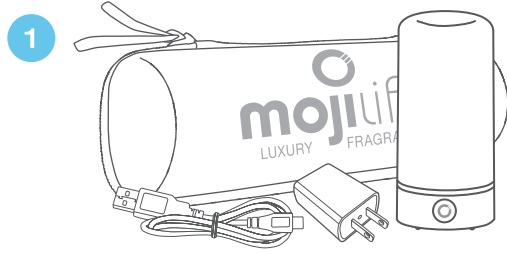
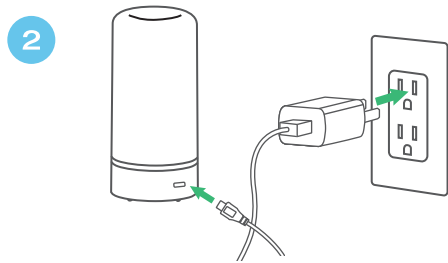


GETTING STARTED



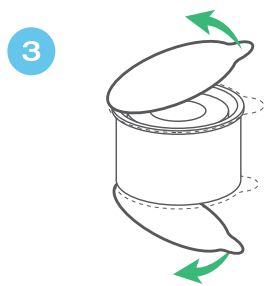
The contents of your AirMoji II package include an AirMoji II device, wall charger, micro USB charging cord, and travel case.



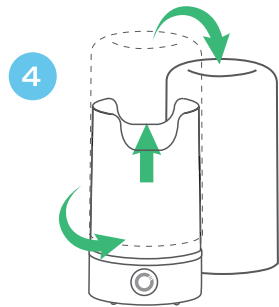
Your device comes partially charged so you can use it immediately. To fully charge your device, use the included charging cord. Please allow **4 hours** for a full charge.

Note: The power button will blink 3 times indicating the device is charging. A constant blinking light indicates the battery is low. Always use the included wall charger to charge your AirMoji II.

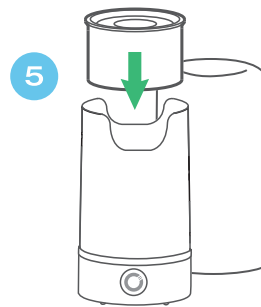
INSERTING A FRAGRANCE POD



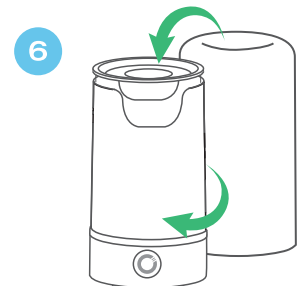
Choose a fragrance pod and remove the top and bottom foil seals.



Twist and remove cap from the AirMoji II.



Insert fragrance pod into the AirMoji II.



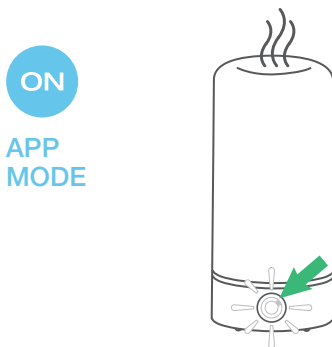
Replace the cap. Twist cap, ensuring that it is secured in place.

OPERATING YOUR AIRMOJI II



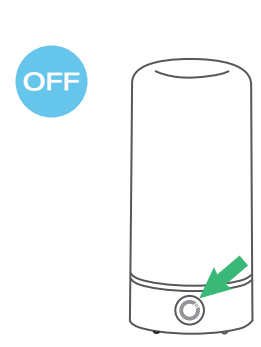
ON
MANUAL
MODE

To turn on the AirMoji II, press and hold the power button for **3 seconds**. The power button will light up in blue. Your device is now in **MANUAL** mode. Instructions for operating in manual mode can be found below.



ON
APP
MODE

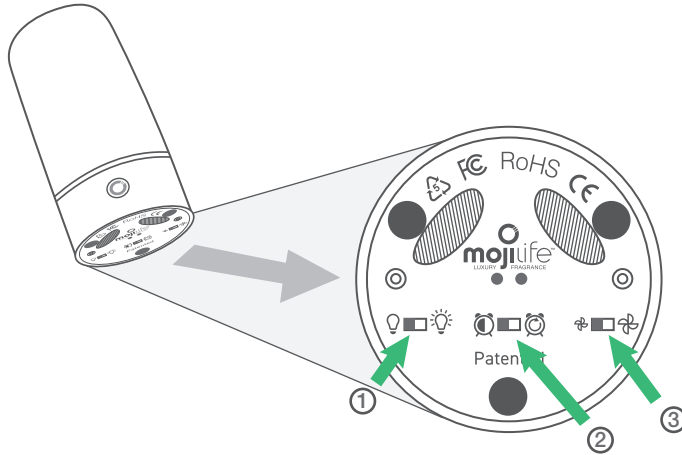
With your device in manual mode, press the power button again to enter **APP** mode. The light will then change from blue to white. Instructions for using the app to control the device can be found below.



OFF

To turn off the AirMoji II, press and hold power button for **3 seconds**. The power button light will turn off.

OPERATING YOUR AIRMOJI II IN **MANUAL** MODE



Once the AirMoji II is powered on and in manual mode, you can control the LED light, fan interval, and fan speed settings using the switches located on the bottom of the device.

- 1) LED band: turn the light off (left) or on (right). The LED band can also be controlled and the color customized in APP mode.
- 2) Fan interval: two settings are available:
 - 30 minutes ON, 30 minutes OFF (left)
 - On ALL of the time (right)
- 3) Fan speed: turn the fan on low (left) or high (right).

OPERATING YOUR AIRMOJI II IN **APP** MODE

DOWNLOADING THE APP



- Go to the App Store (IOS) or Google Play (Android) on your phone.

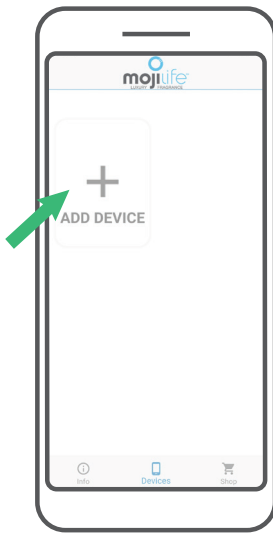


- Search for “Mojilife AirMoji II” and select the app.
- Tap “Get/Install” app.
- The app will download and you will be able to open it from the icon on your phone.

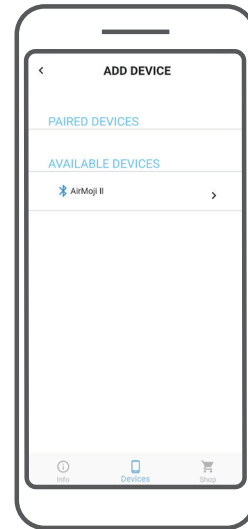
OPERATING YOUR AIRMOJI II IN APP MODE (continued)

IMPORTANT: Make sure your device is turned on and in APP mode before proceeding. The light on your device will be white, indicating it is in APP mode. Also, make sure your phone has Bluetooth enabled (see your settings).

Launch the MojiLife AirMoji II app and click the “Add Device” button.



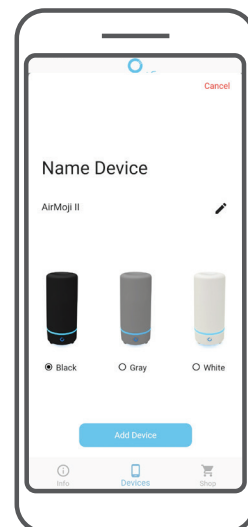
Under Available Devices, select the AirMoji II you wish to program. Note: While other devices may be visible to the app, only the AirMoji II is compatible with the app.



The power button on your device will blink while it is pairing with your phone.



Once your AirMoji II has paired with your phone, name your device (i.e. Kitchen, Bedroom, Office, etc.) and select the color. Click the blue “Add Device” button to complete this step.

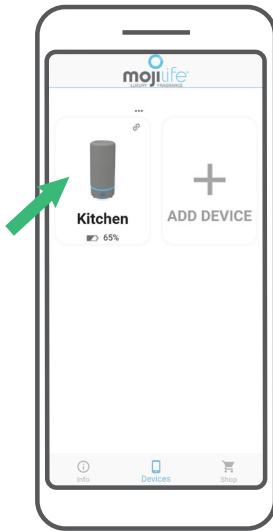


OPERATING YOUR AIRMOJI II IN APP MODE (continued)

Your device is now ready to customize. Note: You may add multiple devices to the app, though only one device can be actively programmed at a time. Also, you must be within approximately 20 feet of your device to ensure a strong connection. If you receive a "time out" message, please move closer to the device and try connecting again. Once your device is connected and personal settings saved, it will retain your programming regardless of your proximity to the device.

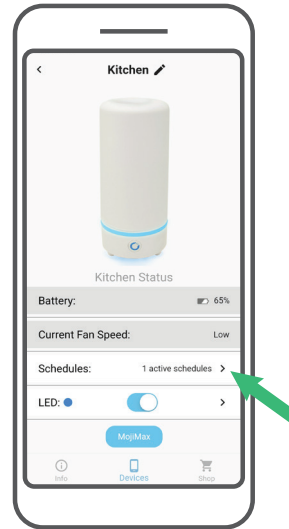
PERSONALIZING THE SCHEDULE

Click on the picture of the device you wish to customize.



This is the main customization screen. Arrows and toggles indicate adjustable settings. Rows that are grayed out are for informational purposes only.

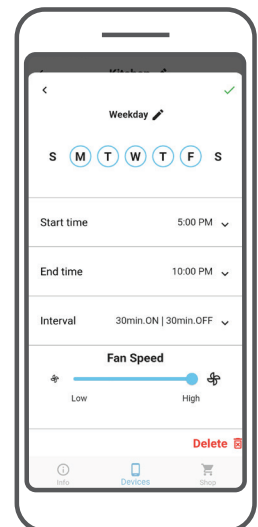
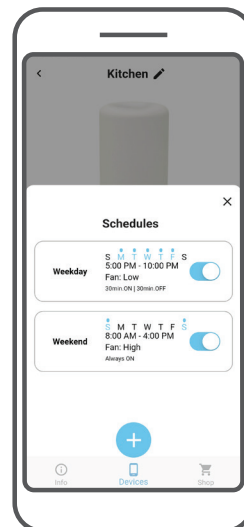
To personalize the schedule, click on the arrow to the right of "Schedules."



Your AirMoji II comes programmed with a popular schedule (daily from 8:00am to 9:00pm, 30 minutes on, 30 minutes off, High fan speed).

From here, you can edit the schedule or add additional schedules to meet your individual needs. To delete a schedule, simply long press on the schedule, select it and press Delete.

Once completed, click the green check mark in the upper right corner to save your settings.

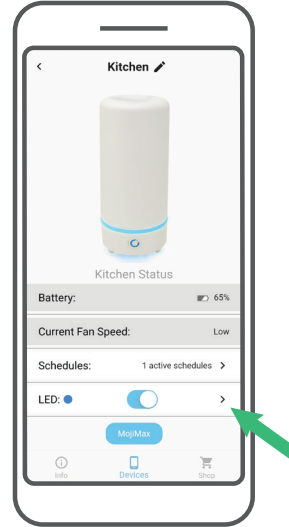


OPERATING YOUR AIRMOJI II IN APP MODE (continued)

PERSONALIZING COLOR

On the main navigation screen, toggle the LED switch to turn the LED on and off.

Click on the arrow to the right of “LED” to set the color options for the LED band.

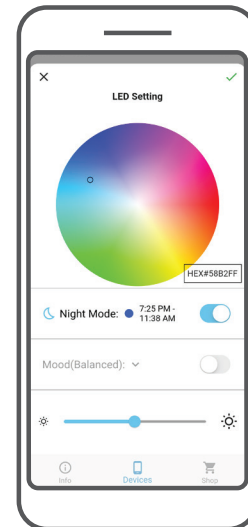


There are several options color options available for your LED band:

- Select a custom color using the color wheel (simply drag your finger across the color wheel and make a choice)
- Enter a HEX code for a specific color (for example #6EC4E9 is Moji Blue)
- Choose from the Mood drop-down for chromotherapy color presets

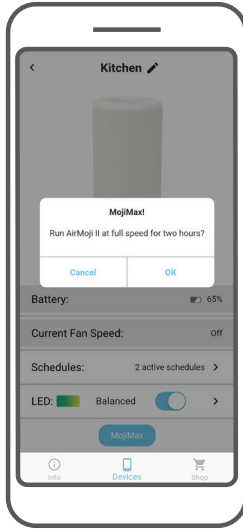
The Night Mode option can be customized with a start/end time. You can also turn off the LED band during the scheduled time by selecting the black color in the center of the Night Mode color wheel.

Once completed, click the green check mark on the upper right corner to save your color settings.

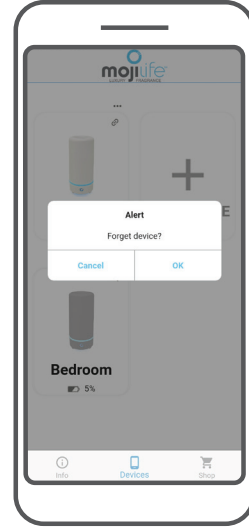


OPERATING YOUR AIRMOJI II IN APP MODE (continued)

The MojiMax button allows you to run your device on high fan speed for two hours without the need to change your saved programming. When complete, the device will return to your normal programming and schedule.



To forget a device and remove it from your device history, simply press on the three dots at the top right of the device icon. Select OK on the pop up and the device will be removed from your connection history.



For additional technical support, please contact MojiLife Distributor Services at info@mojiproducts.com.

WARRANTY:

MojiLife warrants to the original purchaser that the product(s) purchased will be free from defects in workmanship and materials, for ONE YEAR from the date of purchase. This Limited Manufacturer's Warranty covers any defects in workmanship or materials under normal use during the warranty period. Returned product(s) must be accompanied by proof of purchase. Acceptable proof of purchase would be the receipt from the purchase or a copy of a paid invoice or order number. All returns must also include a Return Merchandise Authorization form which can be obtained from MojiLife Corporate Office by emailing to returns@mojiproducts.com.

EXCLUSIONS:

The warranty does not apply in the event of misuse or abuse of product(s) or as a result of unauthorized alterations or repairs. The warranty is void if the product(s) is disassembled or altered in any way or used in a manner contrary to instructions as outlined in the user manual.