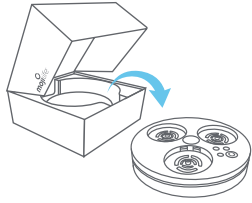
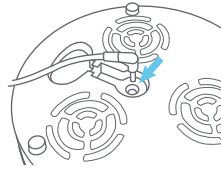


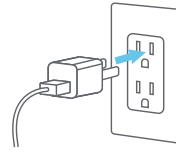
## GETTING STARTED



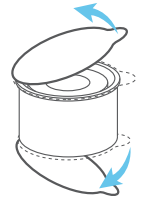
**Step 1:** Remove M3 from packaging.  
NOTE: MojiMinis sold separately.



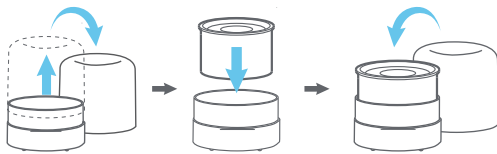
**Step 2:** Insert power cord into the bottom of the device. (Unlike the AirMoj, the M3 has no battery. To operate this device it must be plugged into a power source at all times.)



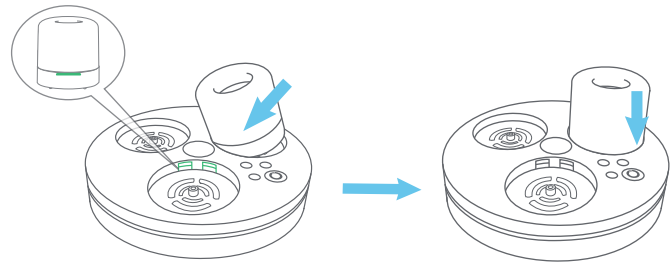
**Step 3:** Plug the power cord into an electrical outlet



**Step 4:** Choose three fragrance pods and remove bottom and top foil seals.



**Step 5:** Separate cap from the bottom of the MojiMinis and insert desired fragrance into MojiMini and replace cap.



**Step 6:** Place the three MojiMinis in the docking port on top of the device by inserting the MojiMini at a slight angle and aligning the side notches with the corresponding slots (located toward the center of the M3), once inserted into slot, push down so that MojiMini is flush.

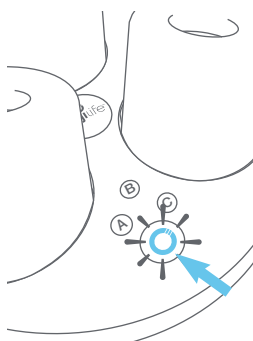
## OPERATING YOUR M3

**Step 1:** To turn the device on hold power button for 3 seconds. The M3 is now in continuous running mode.

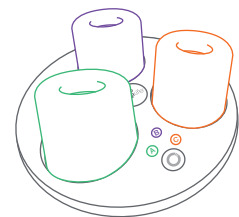


**Step 2:** To schedule device to operate for 60 minutes on and 60 minutes off press power button a second time.

**Step 3:** To connect device to your smartphone and in order to utilize the App and set schedule for your device, press button a **third** time (see App Instructions in this booklet). This will activate bluetooth mode. Note: You will notice when bluetooth mode is activated the fan will stop spinning.



**Step 4:** To activate or deactivate an individual docking port, press the **A**, **B**, or **C** button that corresponds to the desired docking port. This relates to any mode you may have the M3 set in. For example if you are in mode 2 (60 mins off 60 mins on) and have port B deactivated then only A and C will be operating. If you want port B activated you can just simply press the B button.



**Step 5:** To turn the device off, hold the power button for three seconds.



## NAVIGATING THE APP

### DOWNLOADING THE APP:

**Step 1:** Go to App Store (IOS) or Google Play (Android) on your smartphone.

**Step 2:** Search for “Mojilife AirMoji” Device App and select app.

**Step 3:** Tap get/install app

**Step 4:** App will download and you will be able to open it from an icon on your smartphone.



\*Note: If you already have the Mojilife Device App on your smartphone, remove the app. You will need to reinstall the newest version of the app in order to use the M3.

### CONNECTING TO YOUR DEVICE:

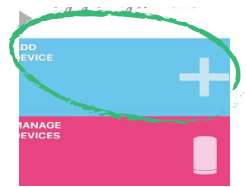
**Step 1:** Make sure your device is in Bluetooth mode (See Step 3 under Operating the M3 Device Instructions)



**Step 2:** Open the Mojilife App on your phone.



**Step 3:** Click on Add Device then select the M3 you wish to connect to. Once selected, the desired M3 will then connect via Bluetooth.



### SETTING TIMERS:

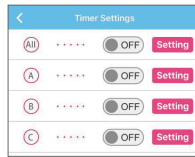
**Step 1:** Select Manage Device



**Step 2:** Select Timer



**Step 3:** Switch on the fans that you want to schedule (ALL, A, B, C) then click Settings.



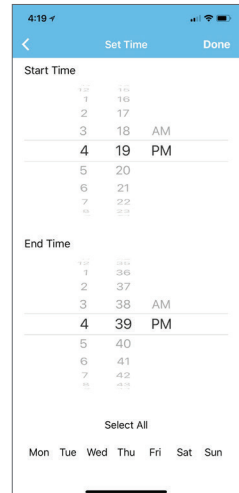
**Step 4:** Select the ON/OFF time desired and select Scheduled Time or continuous running (which means the period of time you program the device in the M3 will have no off time in that period).



**Step 5:** Set the specific time and day(s) for the timer. Select done.

**Step 6:** In the Timer List switch the Timer that was just created to ON. (the fan will run continuously during that scheduled time)

**Step 7:** To Delete the Timer, swipe left and Delete.

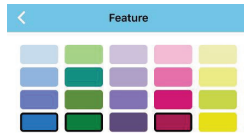


## LED LIGHTS:

**Step 1:** Select on Feature (Should say Features)



**Step 2:** Select up to 8 colors for your LED light to sequence through.



**Step 3:** Scroll to select desired duration for colors previously selected (1-10 secs).



**Step 4:** Click on the fan speed (Low, Med, High)



**Step 5:** Adjust Brightness by sliding along bar until the desired brightness is achieved



**Step 6:** Control LED lighting by switching to either ON or OFF



**Step 7:** Click Save. Note: Any changes made to the M3 device won't be applied until you have selected Save.



For additional technical support, please contact MojiLife Distributor Services at [info@mojiproducts.com](mailto:info@mojiproducts.com).

## WARRANTY:

MojiLife warrants to the original purchaser that the product(s) purchased will be free from defects in workmanship and materials, for ONE YEAR from the date of purchase. This Limited Manufacturer's Warranty covers any defects in workmanship or materials under normal use during the warranty period. Returned product(s) must be accompanied by proof of purchase. Acceptable proof of purchase would be the receipt from the purchase or a copy of a paid invoice or order number. All returns must also include a Return Merchandise Authorization form which can be obtained from MojiLife Corporate Office by emailing to [returns@mojiproducts.com](mailto:returns@mojiproducts.com).

## EXCLUSIONS:

The warranty does not apply in the event of misuse or abuse of product(s) or as a result of unauthorized alterations or repairs. The warranty is void if the product(s) is disassembled or altered in any way or used in a manner contrary to instructions as outlined in the user manual.