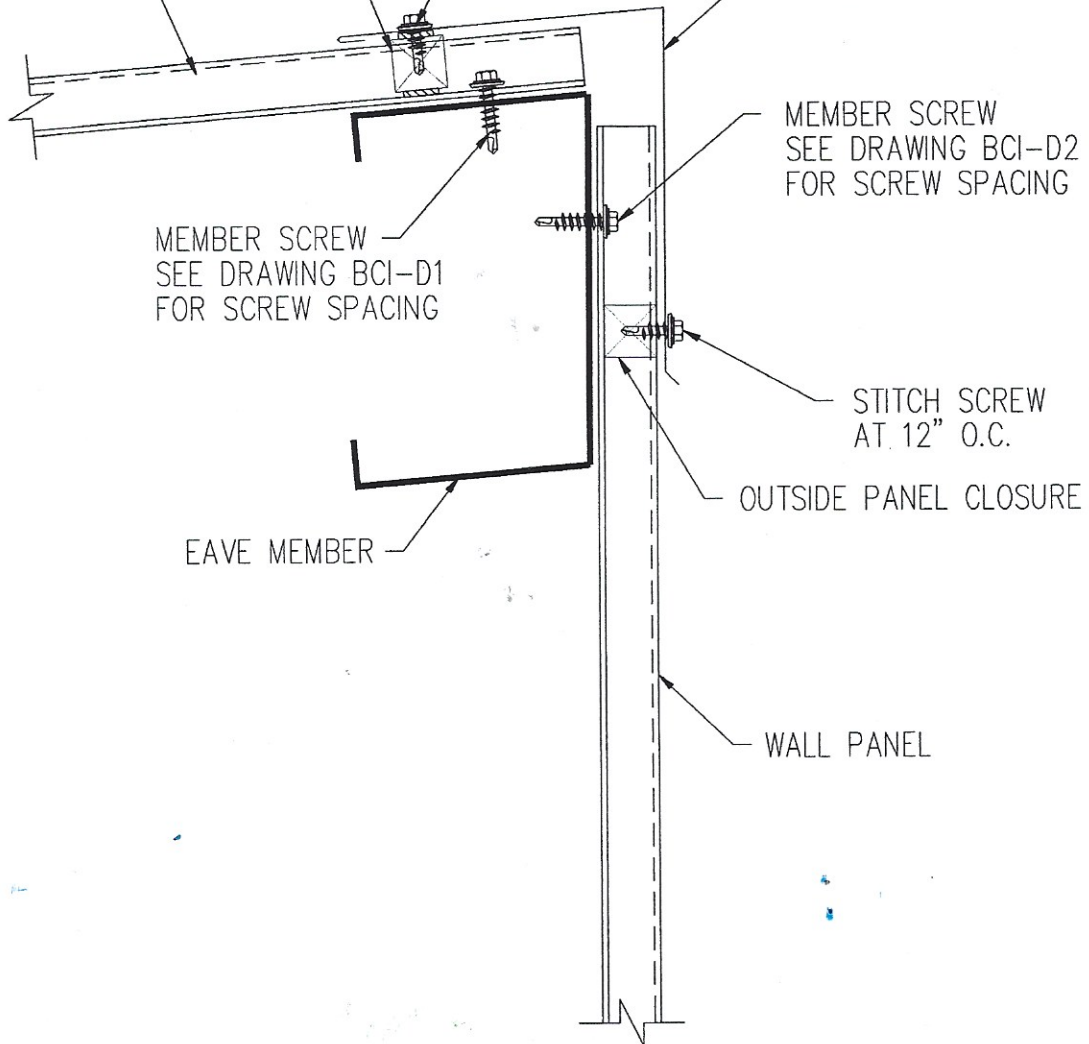


OUTSIDE PANEL CLOSURE WITH  
3/32" X 1/2" TAPE SEALANT  
TOP AND BOTTOM OF CLOSURE

STITCH SCREW  
AT 12" O.C.

'R' ROOF PANEL

HIGH EAVE TRIM



MEMBER SCREW  
SEE DRAWING BCI-D2  
FOR SCREW SPACING

MEMBER SCREW  
SEE DRAWING BCI-D1  
FOR SCREW SPACING

STITCH SCREW  
AT 12" O.C.

OUTSIDE PANEL CLOSURE

EAVE MEMBER

WALL PANEL

TITLE

**SIMPLE HIGH EAVE TRIM**

DWG No.

**BCI-D8**

**BCI**

BUILDING COMPONENTS, INC.  
11919 NORTH GARDEN    PHONE: 713-995-9224  
HOUSTON, TEXAS 77071    FAX: 713-995-5482