

EVERMORE
COMPETITION
GUIDE

SHOW SEASON 2022

*word
chatters
2021*

T A B L E O F

CONTENTS

01 **INTRODUCTION**

Meet Our Staff

02 **TOURNAMENT TEAM**

Evermore's Tournament Team Options

03 **ACADEMY TEAM**

Evermore's Academy Team Options

04 **PERFORMANCE TEAM**

Evermore's Show Horse Options

06 **FREQUENTLY ASKED
QUESTIONS**

EVERMORE

A Warm Welcome

Welcome to the world of Equestrian Competition!

Here at Evermore Farm, we hope to inspire you to jump into the Show Ring. We offer three distinct levels of show ring competition to meet our client's goals, budgets & commitment levels. Each level opens the door to a whole new world of fun and challenges for riders of all ages.

Our riders begin at the Tournament Level and compete for one competition year. From there, riders may choose if they would like to make a larger commitment and join our Academy Team. Once a rider has excelled at the Academy Level they may be asked to join our Performance Show Team.

We hope this packet is informative and helpful as your family learns all about the Competition Teams at Evermore.



Mike & Jessie Richardson

EVERMORE FARM OWNERS

We hope you can join one Evermore's Competition Teams and experience all we have to offer!



MEET OUR TEAM



JESSIE RICHARDSON

Co-Owner & Head Instructor



MIKE RICHARDSON

Co-Owner & Head Trainer



HALEY TOLLIVER

Riding Program Director



GABY PAVERD

Assistant Trainer & Riding Academy
Instructor

OUR MISSION, VISION, AND VALUES

Always, Onward, Evermore

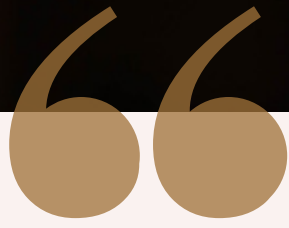


MISSION & VISION

- Our Riding Academy provides the highest quality lessons to novice and seasoned pros. We take great pride in teaching confidence building beginners, providing challenging show horses, and everything in between.
- We strive on bringing riders along at a slow and steady pace, allowing clients to experience local competitions and then leveling up to regional level.
- We are committed to maintaining a small operation, accepting as many clients as we feel that we can service with the highest quality of attention.

VALUES

- We are dedicated to providing riders with a safe and encouraging environment that promotes self growth and self esteem.



MAY MY HEART BE
BRAVE, MY MIND
FIERCE, AND MY
SPIRIT FREE.

- KATE FORSYTH



Jacqui Anne

EVERMORE FARM TOURNAMENT TEAM

WHAT IS INCLUDED:

- 1 or 2 Lessons Per Week
- 4 Tournaments Per Year
- Members of the Tournament Team receive first option on horses, insuring the most suitable horse for each team member.



MONTHLY TUITION

\$330 Leadline 1 Lesson Per Week

\$580 Leadline 2 Lessons Per Week

\$400 Independent Rider 1 Lesson Per Week

\$580 Independent Rider 2 Lessons Per Week

Pay in Full Option w/ 10% Discount - Due April 30, 2022

EVERMORE FARM ACADEMY TEAM

WHAT IS INCLUDED:

- 2 Lessons Per Week (Academy Division)
- 1-2 Lessons Per Week (Leadline Division)
- 4 Tournaments Per Year
- 6 Regional Academy Shows
- Academy State Championships
- National Academy Championships



MONTHLY TUITION

\$725 Leadline 1 Lesson Per Week

\$975 Leadline 2 Lessons Per Week

\$1,360 Academy Division 2 Lessons Per Week

Pay in Full Option w/ 10% Discount - Due April 30, 2022

EVERMORE FARM PERSONAL ACADEMY HORSE OWNERSHIP

WHAT IS INCLUDED:

- Highest quality of care for your horse
- Add-On Option: Academy or Tournament Package
- Add-On Option: UNLIMITED Lessons

Many of our Academy Riders choose to own their own horse.



MONTHLY TUITION

\$750 Academy Horse Board

\$1500 Exclusive Academy Horse Board

Pay in Full Option w/ 10% Discount - Due April 30, 2022

EVERMORE FARM SHOW RIDER TEAM

WHAT IS INCLUDED:

- Unlimited Monthly Lessons
- Choice of Regional and/or National Level Shows
- Team Members must own their own show horse or participate in the Evermore Lease Program to qualify.
- Customized training regimen aimed at matching rider's goals and dreams.



MONTHLY TUITION

\$1500 Board & Training*

\$500 Unlimited Lessons

**All Horse Show fees are paid individually prior to the upcoming competition.*

Pay in Full Option w/ 10% Discount - Due April 30, 2022



FREQUENTLY ASKED QUESTIONS

IF WE JOIN A COMPETITION TEAM ARE WE ABLE TO STAY AT ANY PARTICULAR LEVEL INDEFINITELY?

Yes! Riders are never required to level up. Riders may stay on any particular level for as long as they would like. Leveling down is also an option.

WHAT HAPPENS IF WE ARE UNABLE TO ATTEND A PARTICULAR SHOW?

In the event that a rider may not be able to attend a scheduled competition, an effort will be made to substitute another show when and if possible.

WHEN DO TEAM ENROLLMENTS BEGIN & END EACH YEAR?

Team Enrollments begin each year on April 1st, 2022 through March 31st, 2023. One time payments are due no later than April 30th, 2022.



RIDER SPOTLIGHT



RUBY PARISH

Ruby joined Evermore Riding Academy in 2018, having never been on a horse before. Excelling during her lessons, Ruby was invited to join our Academy Team in 2021. Since then, Ruby has gone to win Champion or Reserve Champion at almost every competition. Ruby is always at the barn lending a hand to new riders or requesting her favorite activity, riding bareback. We can't wait to see what the future holds for this talented 9 year old.

-Jessie Richardson



ENROLLMENT

JOIN TEAM EVERMORE!

NOW ENROLLING FOR 2022

If you are interested in learning more about Competition Team Membership, please make sure to reach out to Ms. Haley to set up an appointment!

HALEY@EVERMOREFARMKY.COM

SCHEDULE A MEETING TODAY!