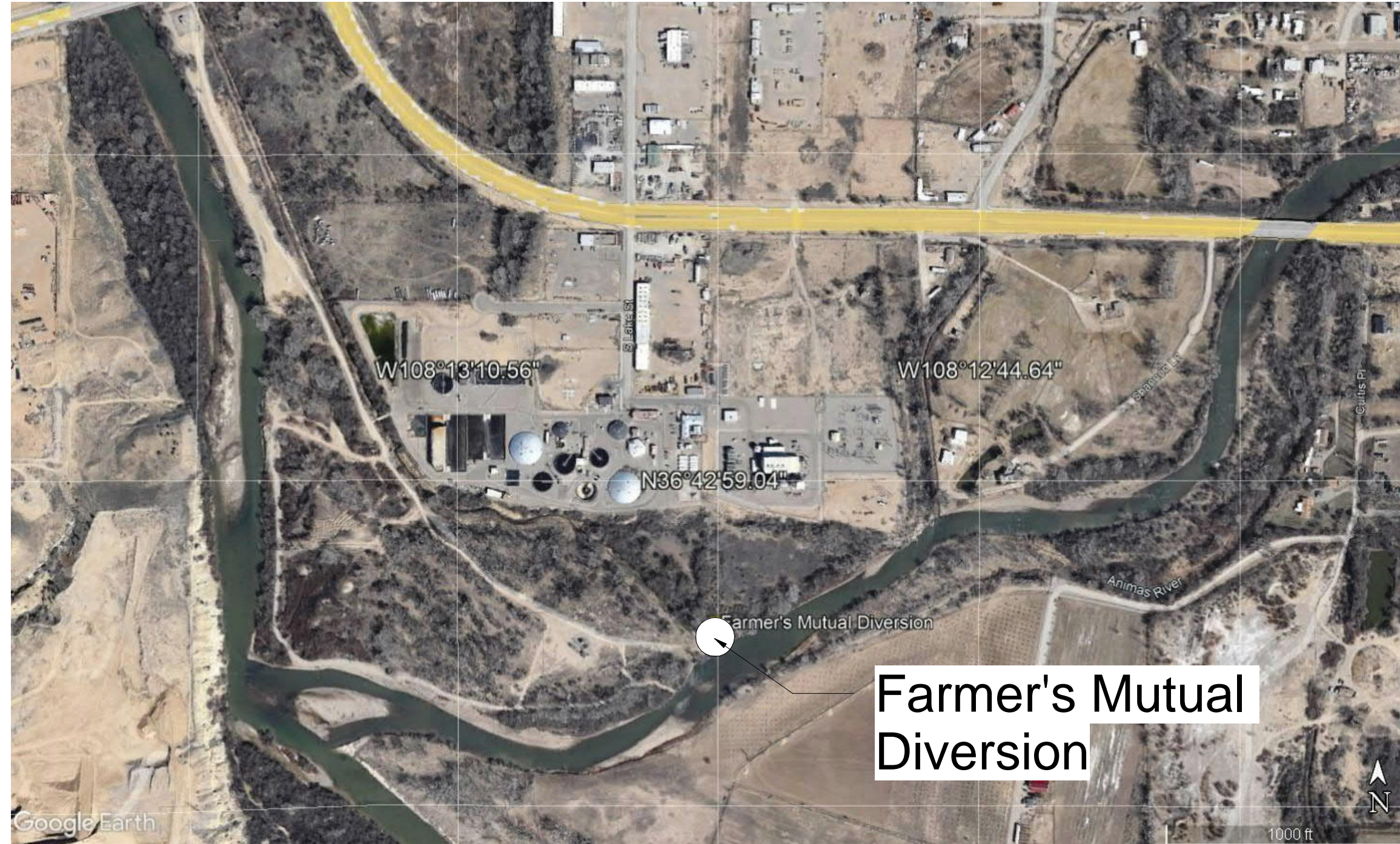
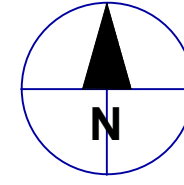


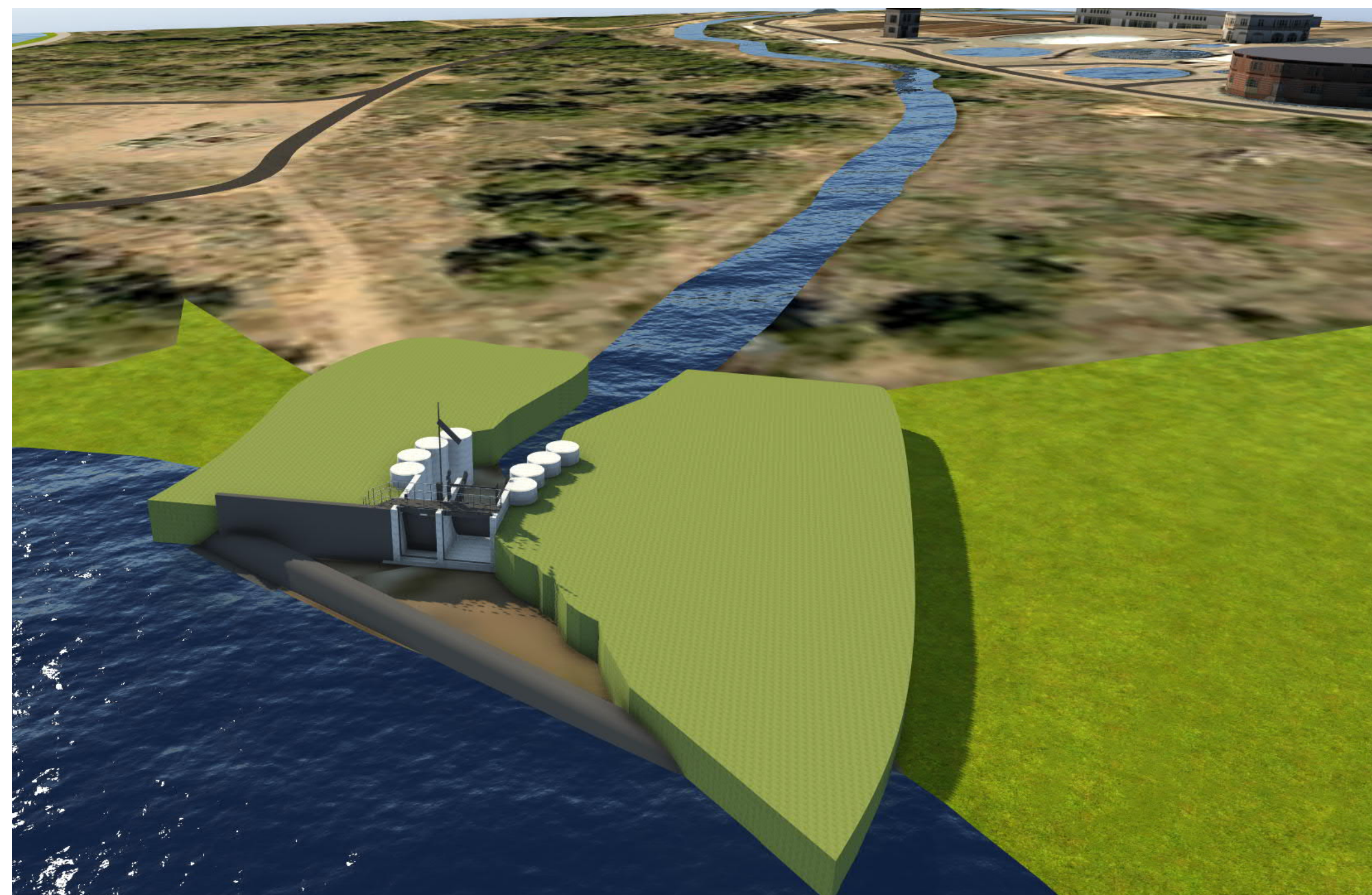
FARMER'S MUTUAL DITCH DIVERSION

SAN JUAN WATER COMMISSION FOR FARMER'S MUTUAL IRRIGATION COMPANY

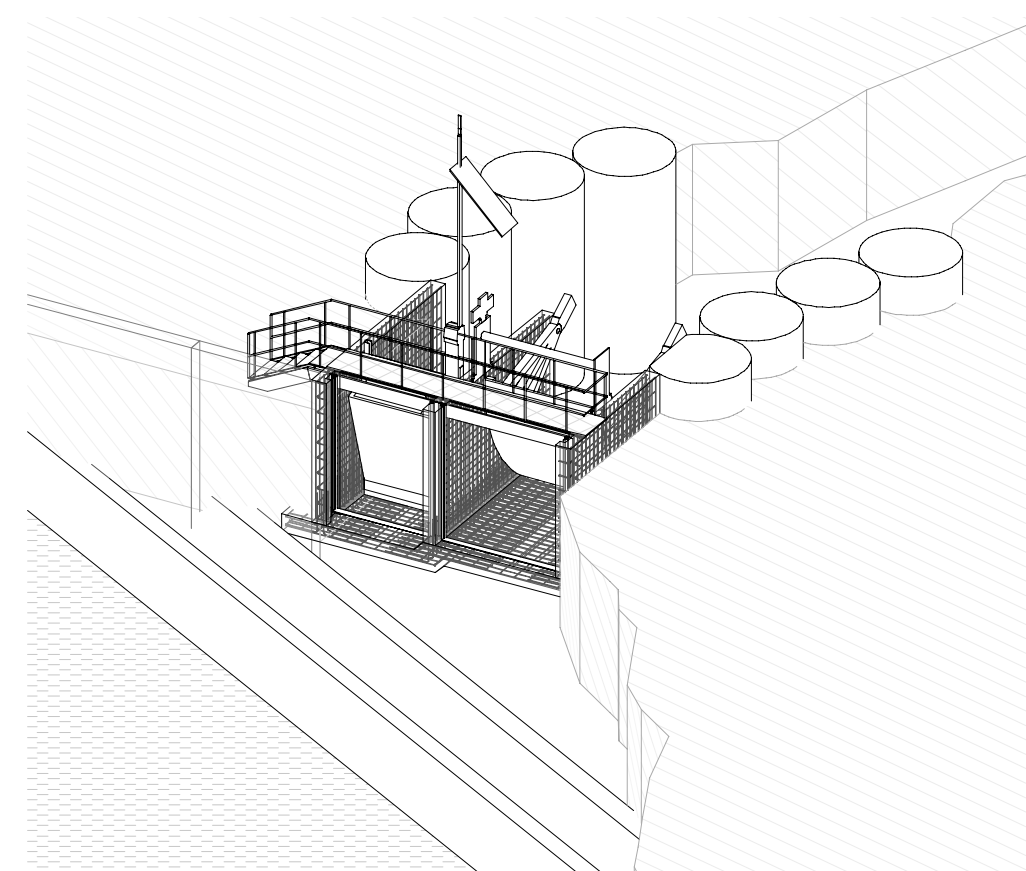
NEW MEXICO, UNITED STATES



1 LOCATION MAP
NTS



2 COVER 3D VIEW
NTS



3 COVER REINFORCEMENT 3D VIEW
NTS

PROJECT CONTACTS:

FARMER'S MUTUAL IRRIGATION COMPANY REPRESENTATIVE: ALAN WALRAVEN, PRESIDENT
505-320-6372

SJWC REPRESENTATIVE: AARON CHAVEZ, EXECUTIVE DIRECTOR,
505-564-8969

AECOM PROJECT MANAGER: RICK COX, P.E.
801-904-4096

INDEX OF DRAWINGS	
SHEET NUMBER	SHEET NAME
FM-10	COVER SHEET
FM-20	EXISTING SITE PLAN AND COFFER DAM LOCATION
FM-25	SITE PLAN
FM-30	STOP LOG DETAILS
FM-40	STRUCTURAL NOTES
FM-50	SECTION A, B, C AND WALL SECTION REINFORCEMENT DETAILS
FM-60	TEMPORARY COFFER DAM PLAN AND DETAIL
FM-70	HYDRAULIC TABLES

MANUFACTURER'S DRAWINGS	
SHEET NUMBER	SHEET NAME
78763 DD (1 OF 6)	FLUMEGATE DIMENSIONAL DATA & SELECTION DRAWING
78763 DD (2 OF 6)	FLUMEGATE DIMENSIONAL DATA & SELECTION DRAWING
78763 DD (3 OF 6)	FLUMEGATE DIMENSIONAL DATA & SELECTION DRAWING
78763 DD (4 OF 6)	FLUMEGATE DIMENSIONAL DATA & SELECTION DRAWING
78763 DD (5 OF 6)	FLUMEGATE DIMENSIONAL DATA & SELECTION DRAWING
78763 DD (6 OF 6)	FLUMEGATE DIMENSIONAL DATA & SELECTION DRAWING



PROJECT
Farmer's Mutual Ditch Company -
San Juan Water Commission

CLIENT
SAN JUAN WATER COMMISSION FOR
FARMER'S MUTUAL DITCH COMPANY
7450 E Main St B, Farmington
NM 87402 United States
Tel: +1 505-564-8969
Web: www.sjwc.org

CONSULTANT
AECOM Technical Services
756 East Winchester, St Suite 400
Salt Lake City, Utah 84107, United States
Tel: +1-801-904-4000
Web: aecom.com

REGISTRATION



100% NFC
NOT FOR
CONSTRUCTION (NFC)

ISSUE/REVISION

NO.	DATE	DESCRIPTION
1	Sep 17, 2021	100% NFC - Initial Issue

PROJECT NUMBER

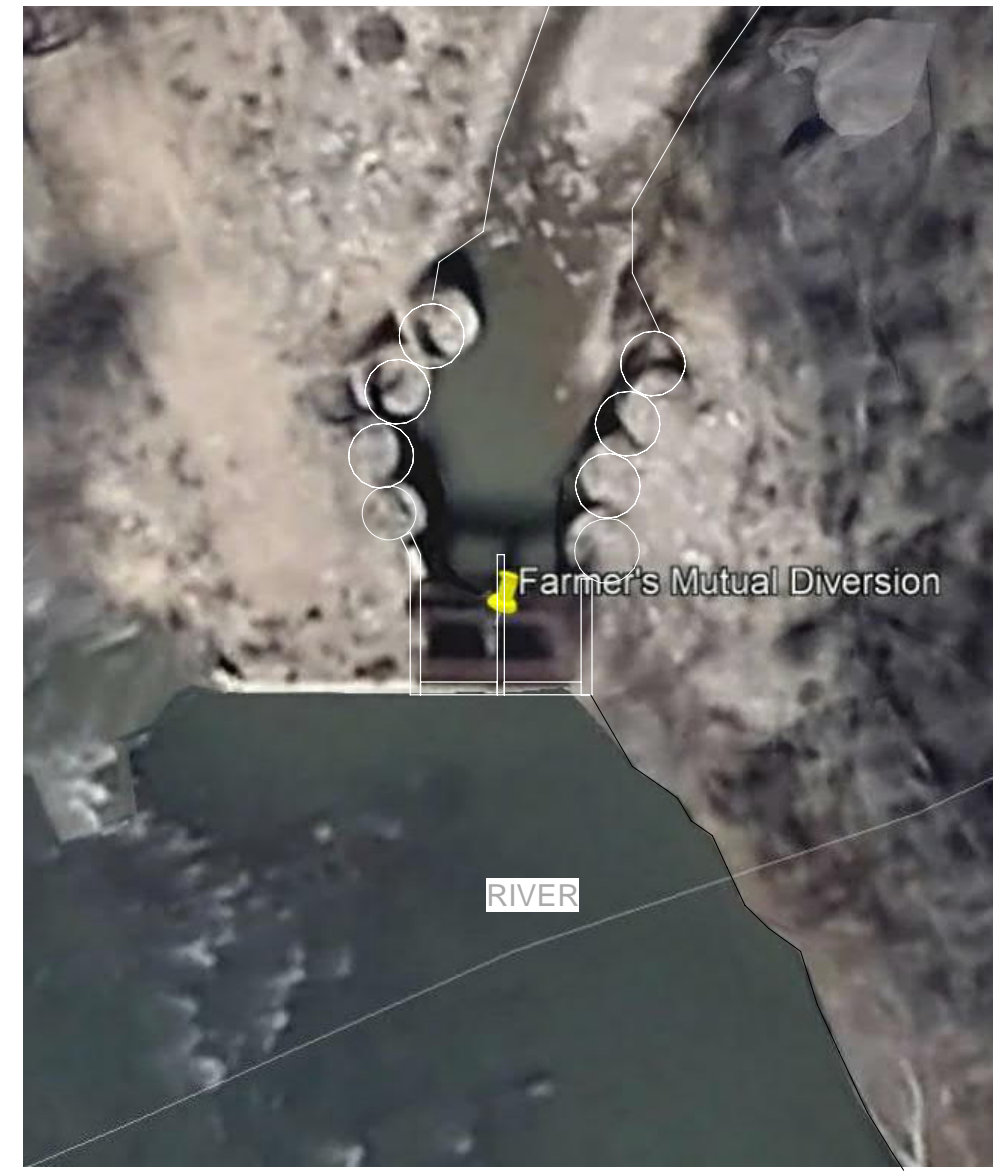
60664950

SHEET TITLE

COVER SHEET

SHEET NUMBER

FM-10

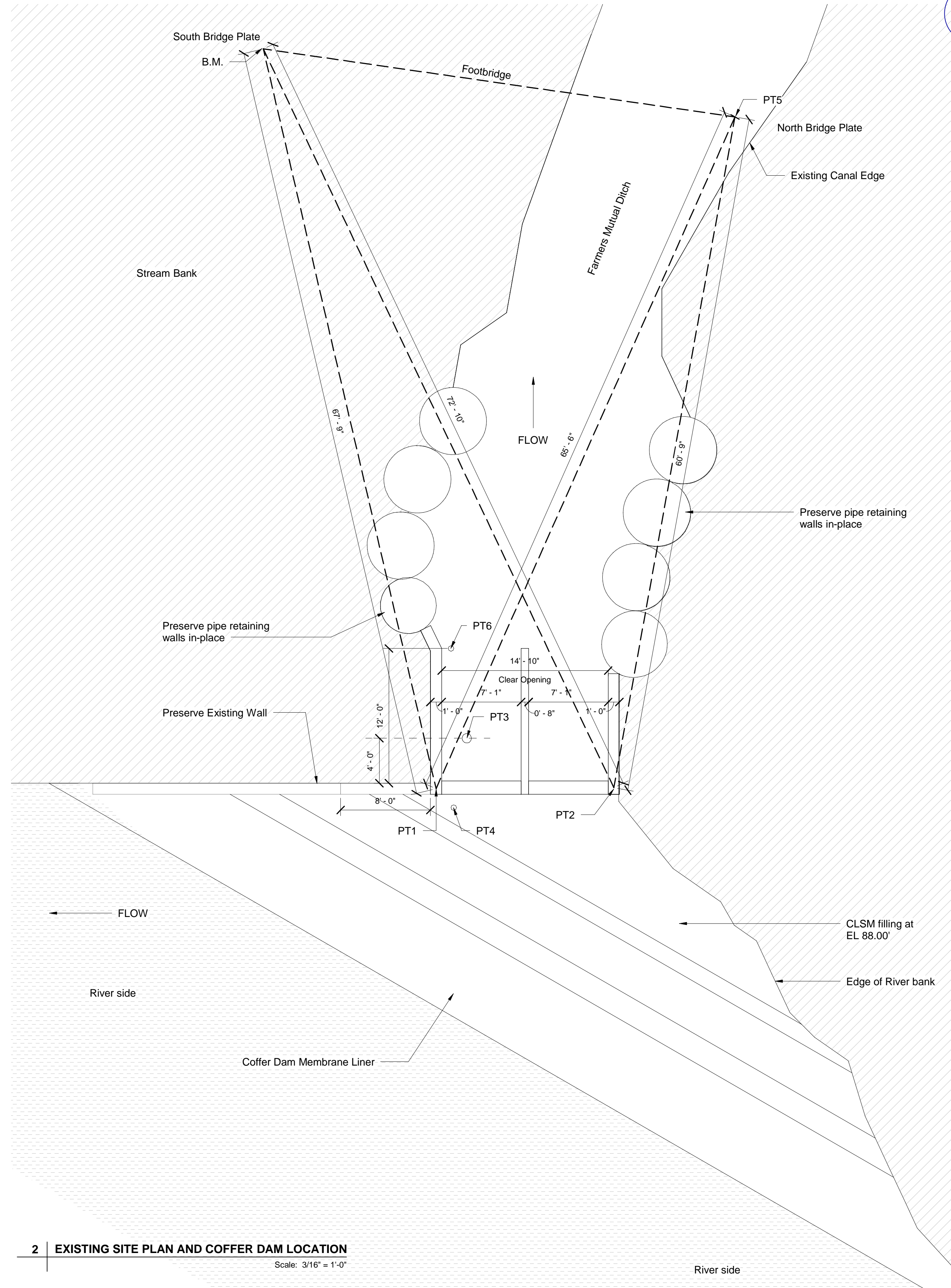


NOTE 1: DEMOLISH EXISTING STRUCTURE

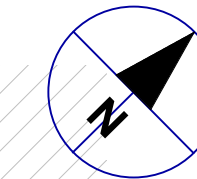
1 | SITE PLAN - EXISTING
Scale: 1/16" = 1'-0"



EXISTING STRUCTURE PHOTOS



2 | EXISTING SITE PLAN AND COFFER DAM LOCATION
Scale: 3/16" = 1'-0"



ELEVATIONS	
B.M.	100.00
PT1	98.00
PT2	97.74
PT3	89.29
PT4	86.99
PT5	99.93
PT6	89.21

3 | ELEVATION TABLE
NTS

- Note 1:
PT1 and PT2 are marked with red paint on existing structure.
- Note 2:
BM and PT5 are marked with red paint on plates of existing footbridge.
Use BM for elevation control.



PROJECT
Farmer's Mutual Ditch Company -
San Juan Water Commission

CLIENT
SAN JUAN WATER COMMISSION FOR
FARMER'S MUTUAL DITCH COMPANY
7450 E Main St B, Farmington
NM 87402 United States
Tel: +1 505-564-8969
Web: www.sjwc.org

CONSULTANT
AECOM Technical Services
756 East Winchester, St Suite 400
Salt Lake City, Utah 84107, United States
Tel: +1-801-904-4000
Web: aecom.com

REGISTRATION



100% NFC

ISSUE/REVISION

NO.	DATE	DESCRIPTION
1	Sep 17, 2021	100% NFC - Initial Issue

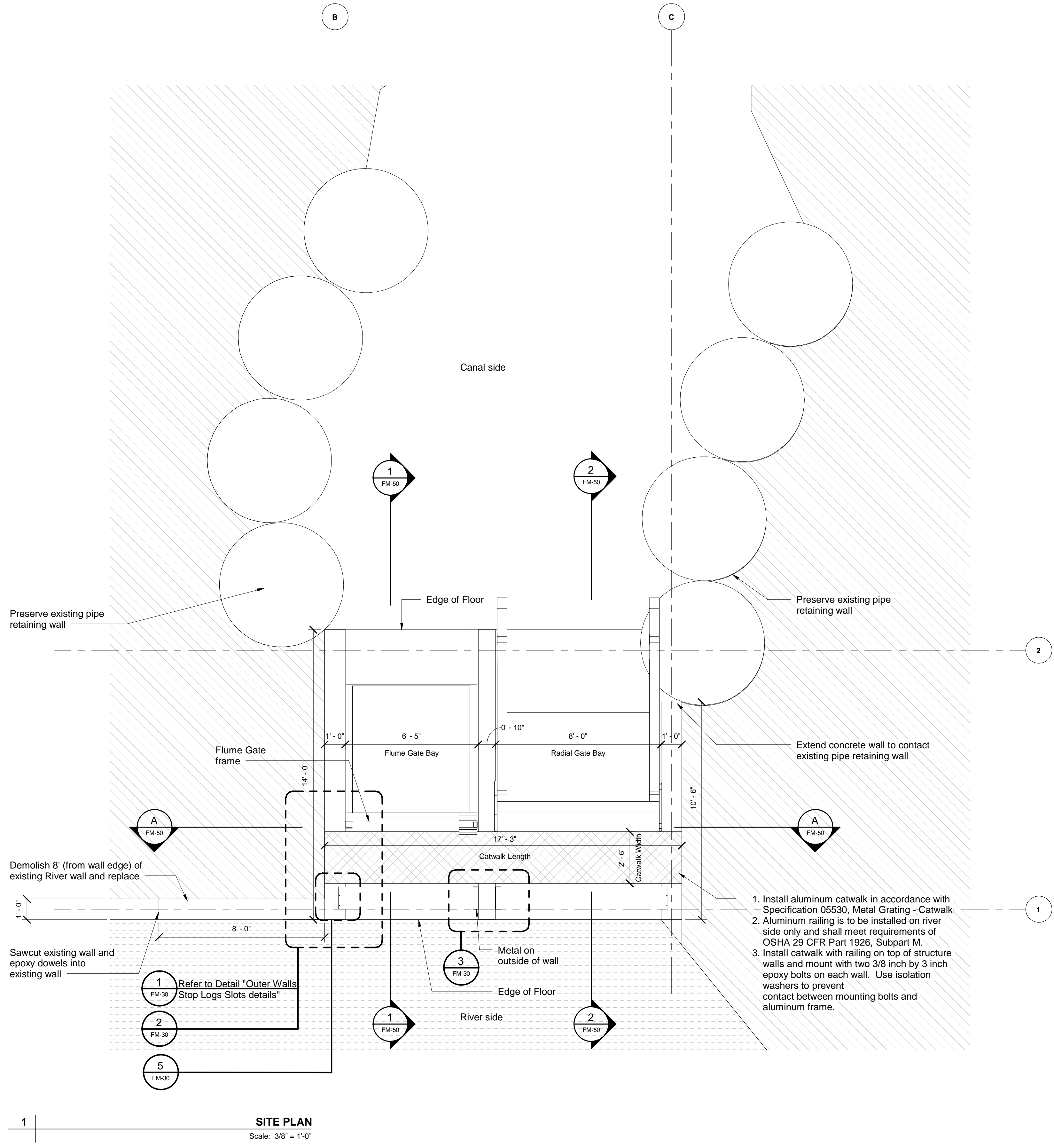
PROJECT NUMBER

60664950

SHEET TITLE
EXISTING SITE PLAN AND
COFFER DAM LOCATION

SHEET NUMBER

FM-20



SITE PLAN
 Scale: 3/8" = 1'-0"



100% NFC

NO.	DATE	DESCRIPTION
1	Sep 17, 2021	100% NFC - Initial Issue

60664950

SITE PLAN

FM-25

DIMENSIONS:

DIMENSIONS ARE TO THE CENTER LINES OF THE BARS UNLESS OTHERWISE SHOWN. CLEAR COVER DIMENSIONS ARE MARKED "CL"

BENT BARS

ONLY BILLET STEEL SHALL BE USED FOR BARS BENT TO A RADIUS OF 50 BAR DIAMETERS OR LESS. UNLESS OTHER RADIUS BENDS ARE INDICATED ON THE DRAWINGS. ALL REINFORCEMENT REQUIRING BENDING SHALL BE BENT ROUND A PIN HAVING DIAMETERS EQUAL TO OR GREATER THAN THOSE REQUIRED BY ACI 350-06, 7.2.

COVER

PLACE REINFORCEMENT SO THAT THE CLEAR DISTANCE BETWEEN FACE OF CONCRETE AND NEAREST REINFORCEMENT IS MINIMUM 2" FOR ALL BARS; EXCEPT FOR CONCRETE PLACED AGAINST EARTH OR ROCK, PROVIDE A CLEAR DISTANCE OF 3". THE CLEAR DISTANCE BEING TO THE DESIGN DIMENSION LINE. REINFORCEMENT PARALLELING CONSTRUCTION JOINTS SHALL HAVE A MINIMUM OF 2" CLEAR COVER.

ABBREVIATIONS

- L = LENGTH OF LAPPED SPLICE (IN)
- EF = EACH FACE
- EW = EACH WAY
- CJ = CONTROL JOINT
- XJ = EXPANSION JOINT
- LD = DEVELOPMENT LENGTH
- SPC = SPACE(S)
- CTR = CENTER
- EQ SPC = EQUAL SPACE(S)

PLACING

REINFORCEMENT AT SMALL OPENINGS (MAX. 18") IN WALLS AND SLABS MAY SPREAD APART NOT MORE THAN 1 1/2 TIMES THE BAR SPACING. REINFORCEMENT MAY BE ADJUSTED Laterally TO MAINTAIN A CLEAR DISTANCE OF AT LEAST 1" BETWEEN THE REINFORCEMENT AND KEYS, WATER-STOPS, ANCHOR BOLTS, FORM TIES, CONDUITS AND OTHER EMBEDDED MATERIAL. IN HEAVILY REINFORCED AREAS RELOCATION OF THE EMBEDDED MATERIAL MUST BE CONSIDERED WHEN BARS ARE BENT DUE TO OFFSETS LESS THAN 3" DEEP, THE SLOPE OF THE INCLINED PORTION MUST NOT EXCEED 3 TO 1, OR OTHER EMBEDDED MATERIAL SHALL BE PLACED TO MAINTAIN A CLEAR DISTANCE OF AT LEAST 1 1/3 TIMES THE MAX. SIZE AGGREGATE.

SPACING

THE FIRST AND LAST BARS IN WALLS AND SLABS, STIRRUPS IN BEAMS, AND TIES IN COLUMNS ARE TO START AND END AT A MAXIMUM OF ONE HALF OF THE ADJACENT BAR SPACING.

CONCRETE

CHAMFER ALL EXPOSED CORNERS 3/4"

UNLESS OTHERWISE NOTED OR SPECIFIED, ALL CONCRETE SHALL HAVE A MINIMUM COMPRESSIVE STRENGTH OF 4500 PSI AT 28 DAYS REFER TO SPEC 03300, CAST-IN-PLACE CONCRETE.

ALL REINFORCEMENT STEEL SHALL BE DEFORMED BARS CONFORMING TO ASTM A-615, "STANDARD SPECIFICATIONS FOR DEFORMED AND PLAIN BILLET-STEEL BARS FOR CONCRETE REINFORCEMENT".

REINFORCEMENT DOWELS

UNLESS OTHERWISE SHOWN, DOWELS INDICATED ON THE DRAWING, SHALL HAVE AN EMBEDMENT EQUAL TO LD AND A PROJECTION EQUAL TO THAT REQUIRED FOR LAP SPLICING A BAR OF THE SAME DIAMETER. REFER TO SPEC 03210, REINFORCING STEEL.

PLAIN DOWELS

PLAIN DOWELS ACROSS RIVER WALL JOINTS SHALL BE SMOOTH BARS UNIFORMLY COATED WITH A FILM OF OIL BEFORE CONCRETE PLACEMENT. VISCOSITY OF THE OIL SHALL HAVE AN SAE RATING OF NOT LESS THAN 250. REFER TO SPEC 03251, DOWELING FOR CONCRETE.

ACCESSORIES

BAR SUPPORTS, SPACERS AND OTHER ACCESSORIES ARE NOT SHOWN ON THE DRAWINGS. THE RECOMMENDATIONS OF THE ACI DETAILING MANUAL - LATEST REVISION, OR OTHER APPROVED SUPPORTING SYSTEMS SHALL BE USED. REFER TO SPEC 03300 CAST IN PLACE CONCRETE.

SPLICES

THE MINIMUM LENGTH OF LAP SPLICING PARALLEL BARS SHALL BE AS GIVEN IN TABLE "A".

NON CONTACT LAP SPLICES SHALL NOT BE SPACED FARTHER APART THAN ONE-FIFTH (1/5) THE REQUIRED LENGTH OF LAP OR 6".

WHEN REINFORCING BARS OF DIFFERENT SIZE ARE TO BE SPLICED, THE LENGTH OF LAP SHALL BE GOVERNED BY THE SMALLER DIAMETER BAR.

SPLICES ARE TO BE MADE SO THAT THE GIVEN DISTANCE TO FACE OF CONCRETE SHALL BE MAINTAINED.

OMIT EDGE AND TIE BARS ALONG SIDE OF OPENINGS WHERE DIMENSION IS LESS THAN 1'-6". OMIT CORNER BARS AT SIDES OF OPENINGS ADJACENT TO FLOORS, WALLS, OR BEAMS, CORNER BARS REQUIRED IF EITHER DIMENSION OF OPENING IS GREATER THAN 1'-6". USE CORNER BASIN FACE OF RECESSES DEEPER THAN 4" IF EITHER DIMENSION OF RECESS IS GREATER THAN 1'-6". REINFORCEMENT AROUND CIRCULAR OPENINGS SIMILAR UNLESS SHOWN DIFFERENTLY ON THE PROJECT PLAN

1 | STRUCTURAL NOTES
Scale: 12" = 1'-0"

TABLE A: MINIMUM DEVELOPMENT AND SPLICE LENGTHS FOR UNCOATED BARS

NOT TO BE USED IF CLEAR SPACING OF BARS IS LESS THAN 2 BAR DIAMETERS OR CLEAR COVER IS LESS THAN 1 BAR DIAMETER BASED ON ACI 350-06, 12.2.2

BAR SIZE NO.	DEVELOPMENT LENGTH		SPLICE LENGTH	
	LD (INCHES)	LD TOP BARS* (INCHES)	CLASS B (INCHES)	CLASS B TOP BARS* (INCHES)
4	19	25	25	32
5	24	31	31	40
6	28	37	37	48
7	42	54	54	70
8	47	62	62	80
9	54	70	70	90
10	60	78	78	102
11	67	87	87	113

* HORIZONTAL REINFORCEMENT PLACED SO THAT MORE THAN 12 INCHES OF FRESH CONCRETE IS CAST IN THE MEMBER BELOW THE DEVELOPMENT LENGTH OR SPLICE

TABLE B: DEVELOPMENT LENGTHS FOR UNCOATED STANDARD HOOKS

BAR SIZE NO.	DEVELOPMENT LENGTH	
	LDH (INCHES) NO RESTRICTIONS	LDH TOP BARS* (INCHES) WITH RESTRICTIONS
4	10	7
5	12	9
6	15	10
7	17	12
8	19	14
9	22	15
10	25	17
11	27	19

* SIDE COVER (NORMAL TO PLANE OF HOOK) NOT LESS THAN 2-1/2 INCHES AND FOR 90-DEGREE HOOK WITH COVER ON BAR EXTENSION BEYOND HOOK NOT LESS THAN 2 INCHES.

2 | TABLES A AND B - STRUCTURAL NOTES
Scale: 12" = 1'-0"



PROJECT
Farmer's Mutual Ditch Company - San Juan Water Commission

CLIENT
SAN JUAN WATER COMMISSION FOR FARMER'S MUTUAL DITCH COMPANY
7450 E Main St B, Farmington NM 87402 United States
Tel: +1 505-564-8969
Web: www.sjwc.org

CONSULTANT
AECOM Technical Services
756 East Winchester, St Suite 400 Salt Lake City, Utah 84107, United States
Tel: +1-801-904-4000
Web: aecom.com

REGISTRATION



100% NFC

ISSUE/REVISION

I/R	DATE	DESCRIPTION
1	Sep 17, 2021	100% NFC - Initial Issue

PROJECT NUMBER

60664950

SHEET TITLE

STRUCTURAL NOTES

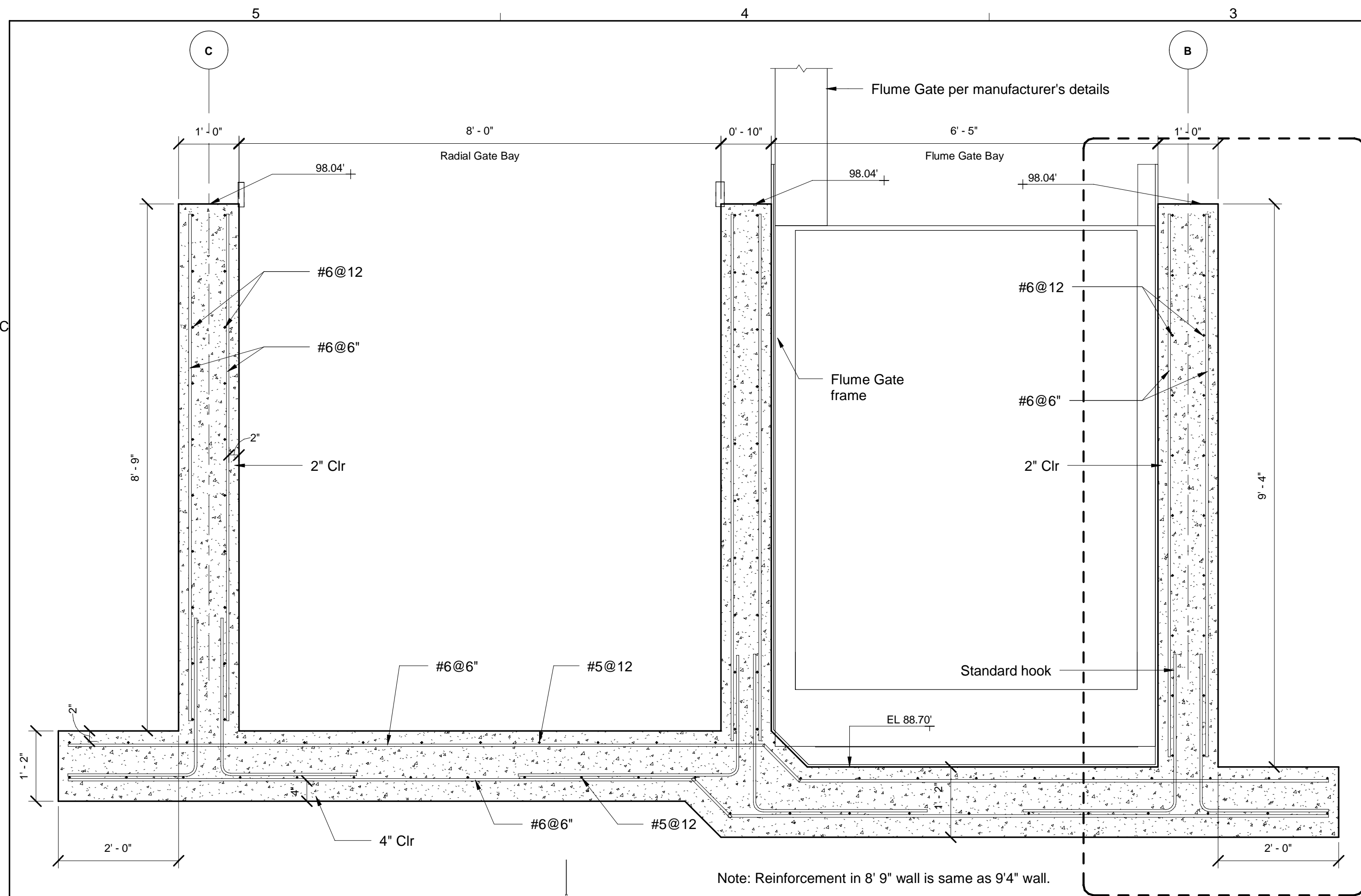
SHEET NUMBER

FM-40

Designer: Designer Checked: Checker Approved: Approver ANSIS D 22"x34"

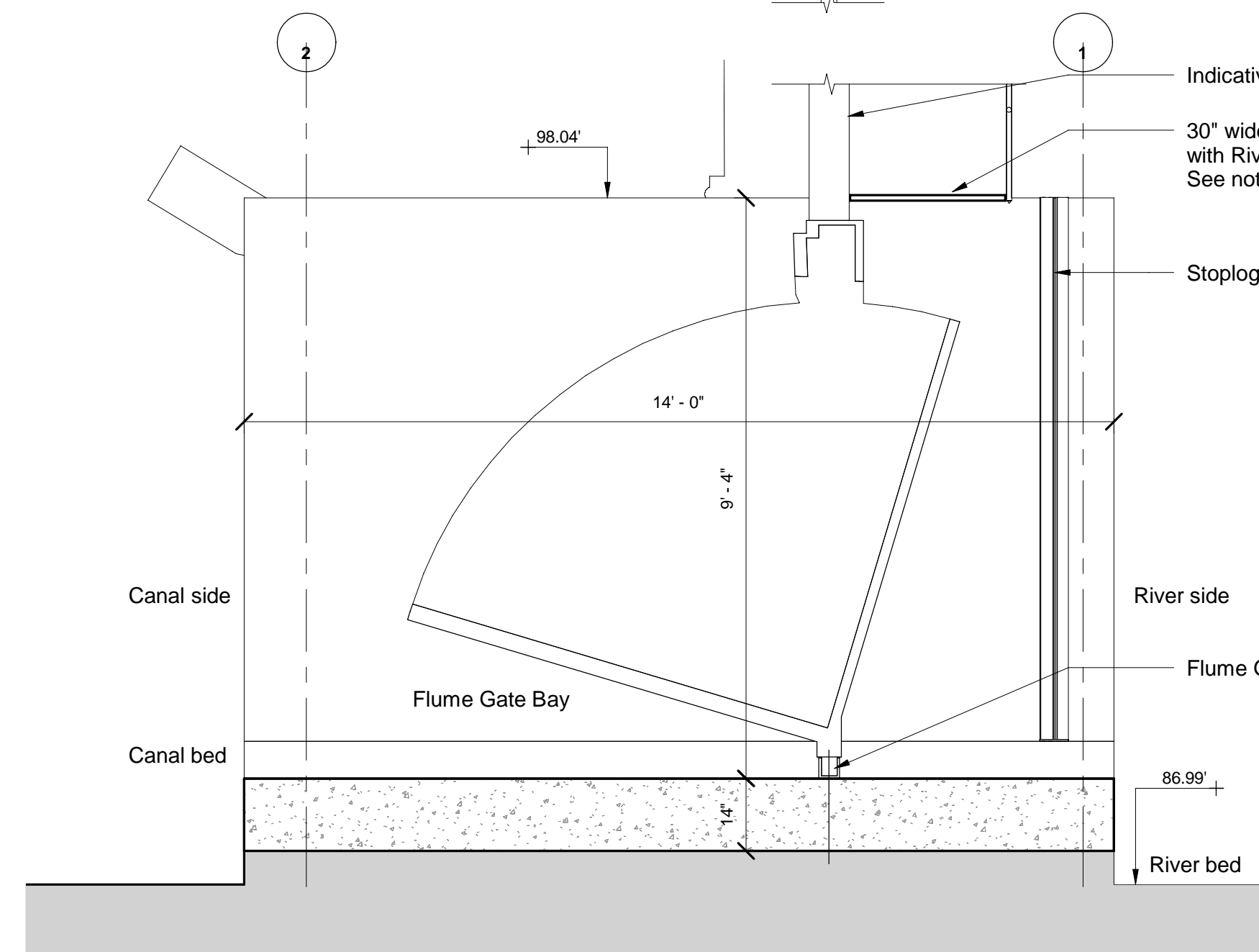
Project Management Initials:

DOCUMENTATION VIEW: FM-50-SECTION A, B, C AND WALL SECTION REINFORCEMENT DETAILS
 Last Plotted: 9/20/2021 1:24:20 PM
 Filename: BIM_360/CHAMEL (USA) 60664950-San Juan VTR2/San Juan Wt. Commission.nw



Note: Reinforcement in 8' 9" wall is same as 9' 4" wall.

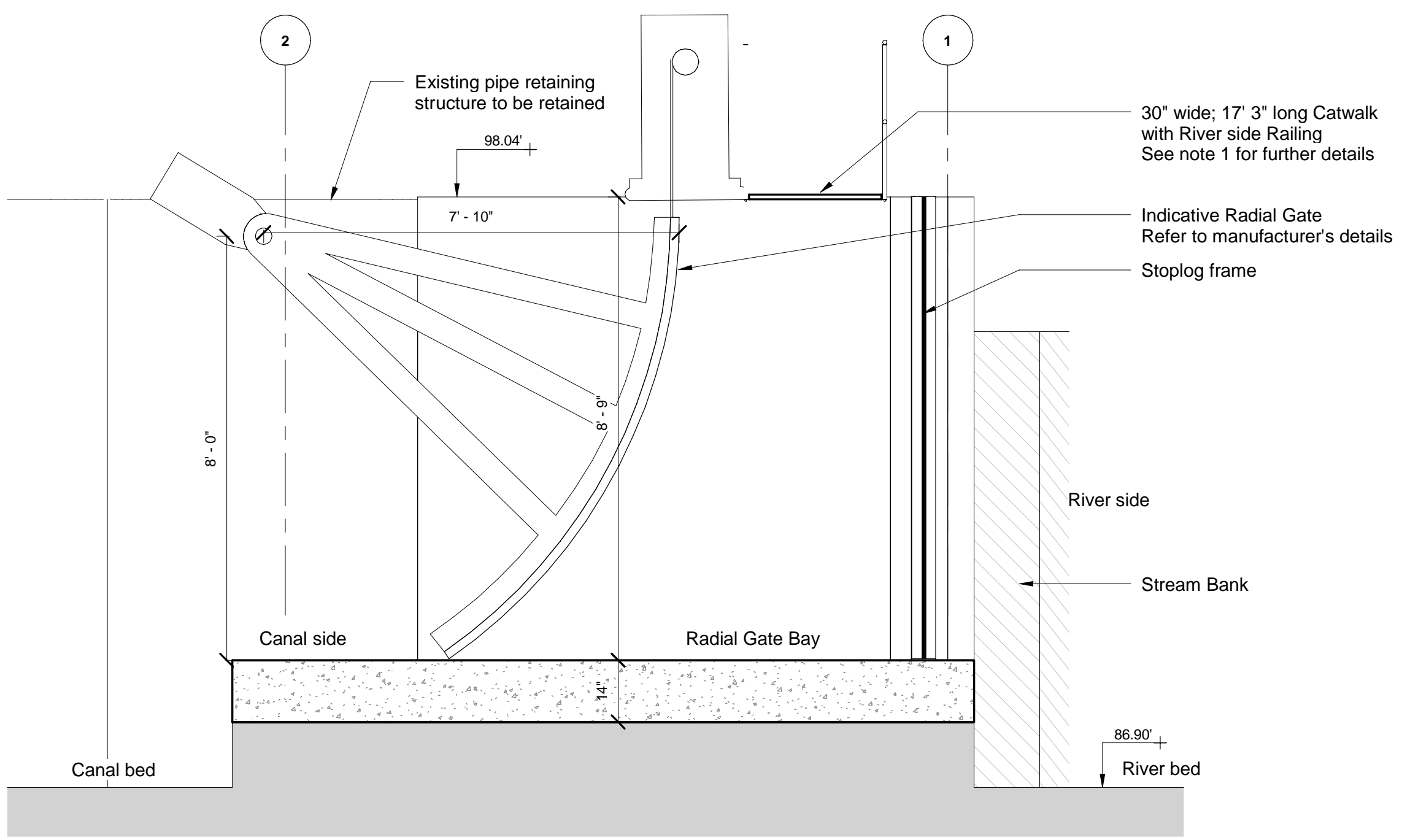
A SECTION A
 Scale: 3/4" = 1'-0"



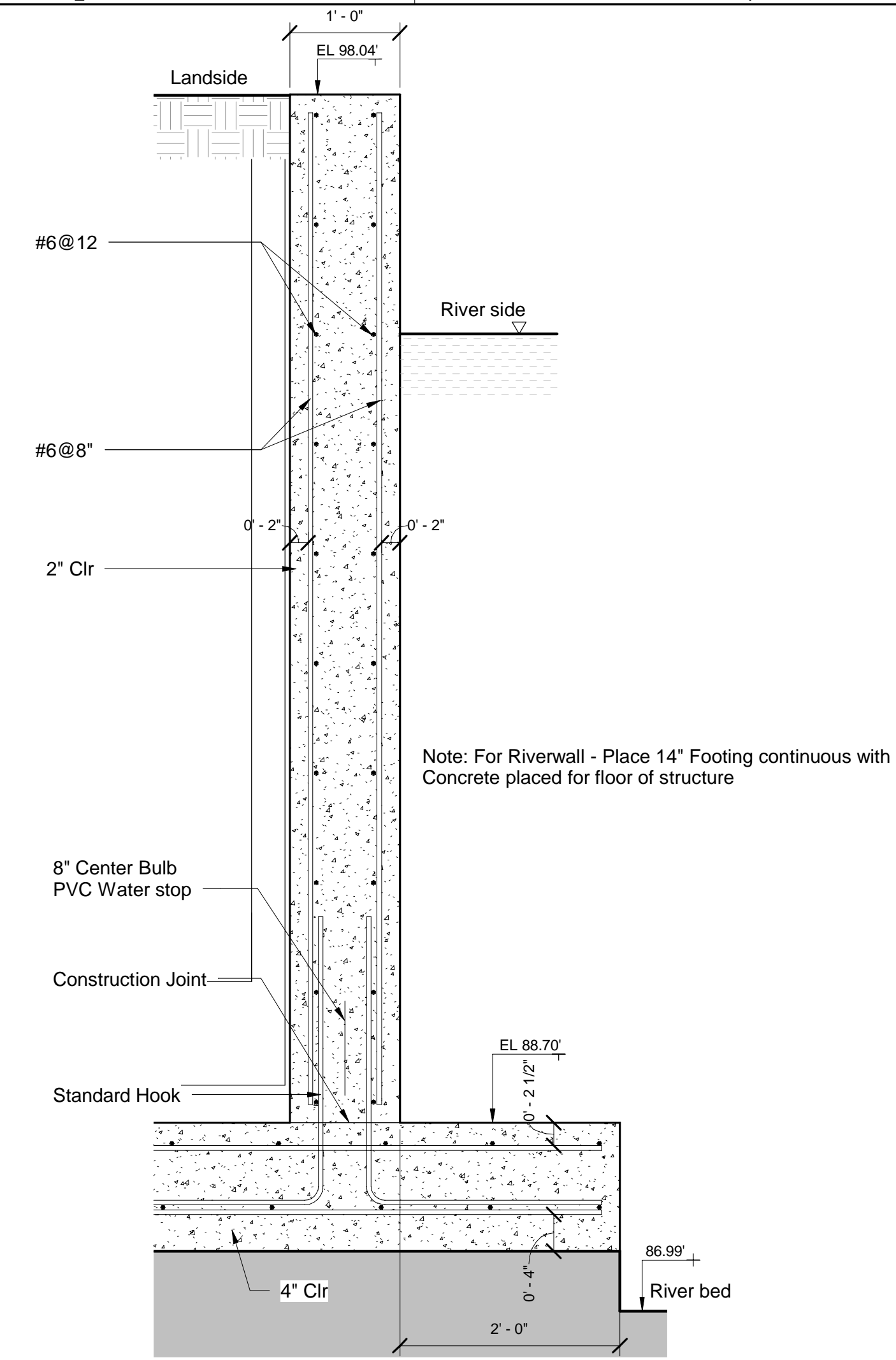
1 SECTION B
 Scale: 1/2" = 1'-0"

Note 1:

1. Install aluminum catwalk in accordance with Specification 05530, Metal Grating - Catwalk
2. Aluminum railing is to be installed on river side only and shall meet requirements of OSHA 29 CFR Part 1926, Subpart M.
3. Install catwalk with railing on top of structure walls and mount with two 3/8 inch by 3 inch epoxy bolts on each wall. Use isolation washers to prevent contact between mounting bolts and aluminum frame.



2 SECTION C
 Scale: 1/2" = 1'-0"



A1 OUTERWALLS AND RIVERWALL SECTION REINFORCEMENT DETAIL
 Scale: 1" = 1'-0"



PROJECT
 Farmer's Mutual Ditch Company -
 San Juan Water Commission

CLIENT
 SAN JUAN WATER COMMISSION FOR
 FARMER'S MUTUAL DITCH COMPANY
 7450 E Main St B, Farmington
 NM 87402 United States
 Tel: +1 505-564-8969
 Web: www.sjwc.org

CONSULTANT
 AECOM Technical Services
 756 East Winchester, St Suite 400
 Salt Lake City, Utah 84107, United States
 Tel: +1-801-904-4000
 Web: aecom.com

REGISTRATION



100% NFC

ISSUE/REVISION

NO.	DATE	DESCRIPTION
1	Sep 17, 2021	100% NFC - Initial Issue

PROJECT NUMBER

60664950

SHEET TITLE

SECTION A, B, C AND WALL SECTION REINFORCEMENT DETAILS

SHEET NUMBER

FM-50

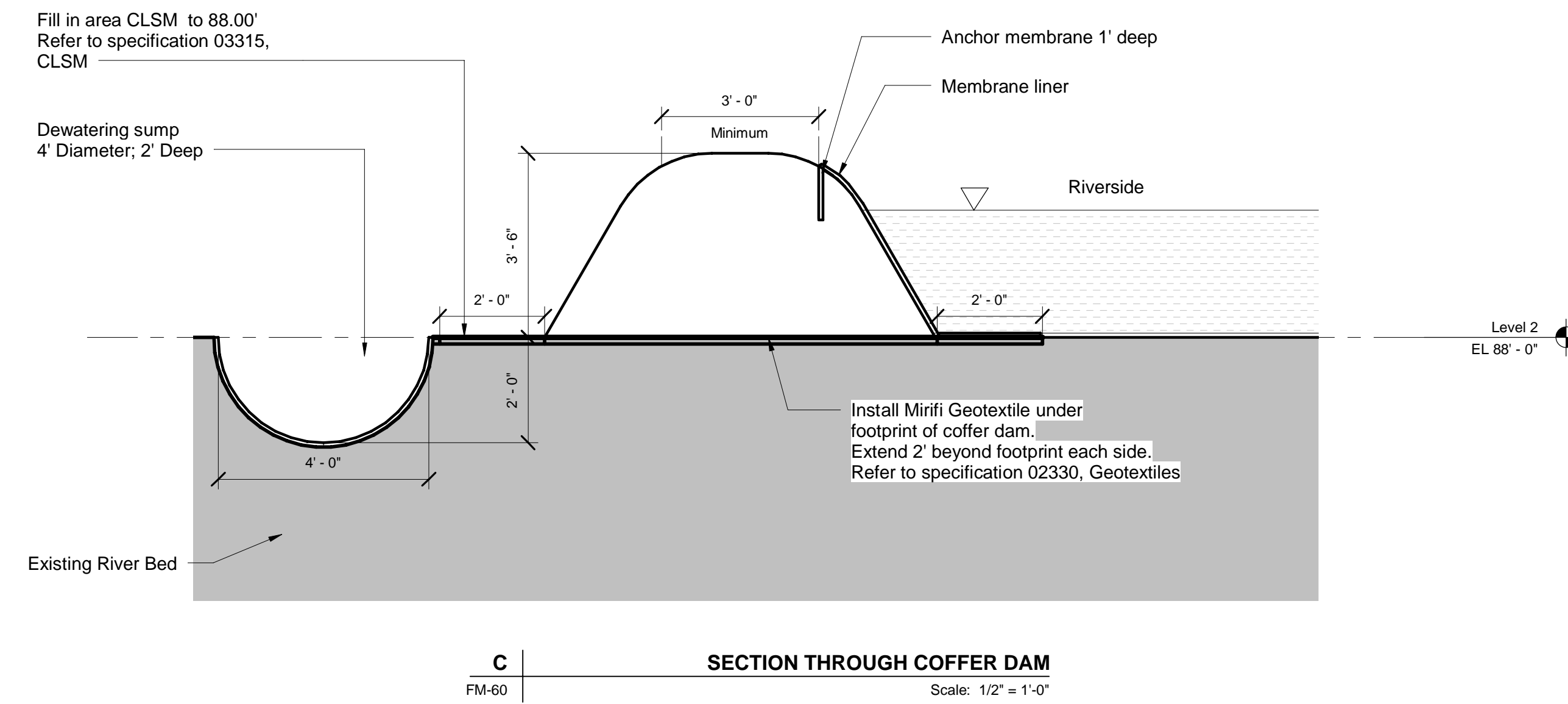
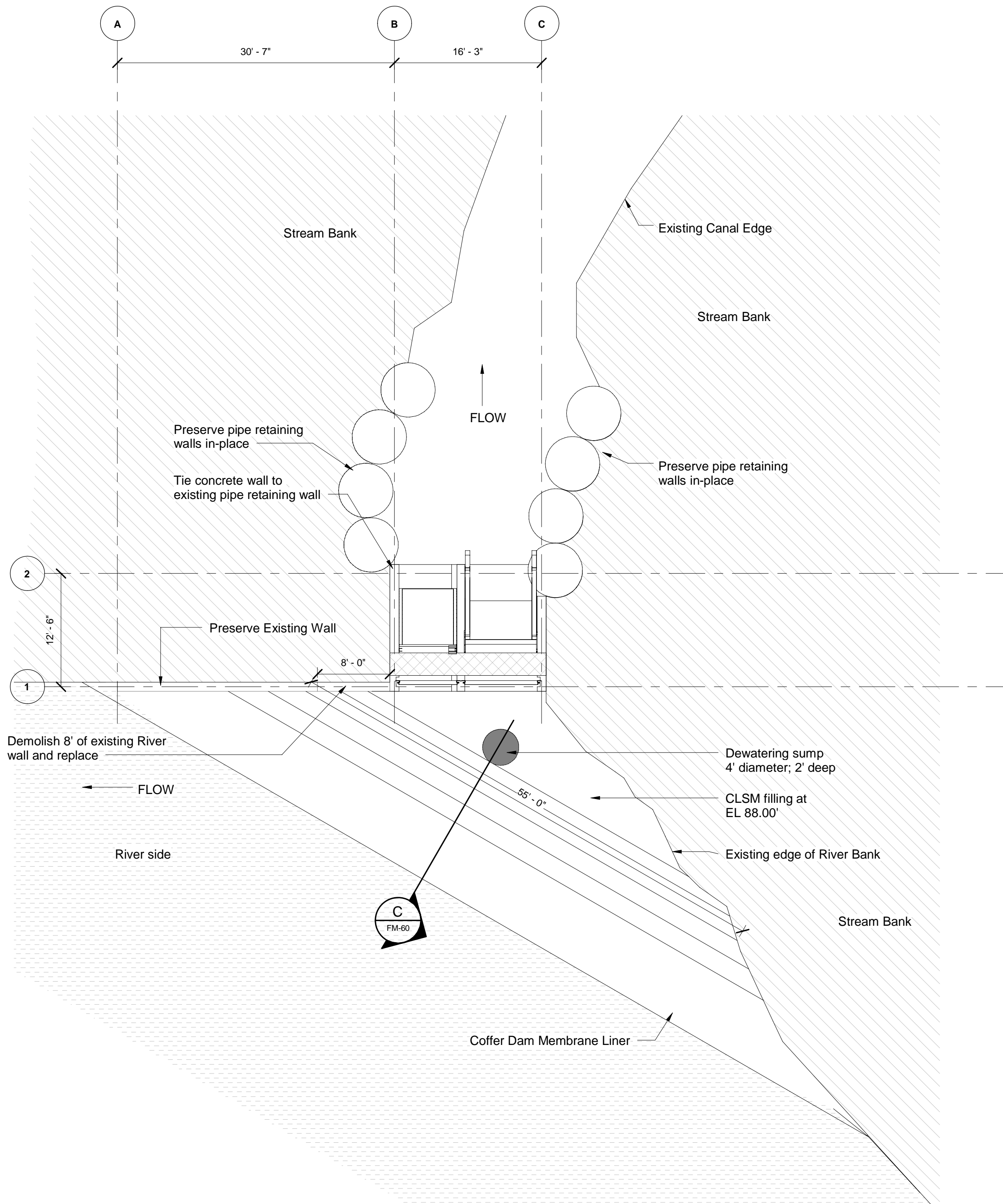


NO.	DATE	DESCRIPTION
1	Sep 17, 2021	100% NFC - Initial Issue

60664950

TEMPORARY COFFER DAM PLAN
 AND DETAIL

FM-60



Project Management Initials: Designer: Designer Checked: Checker Approved: Approver ANS/D 22/23/24

DOCUMENTATION VIEW: FM-60 - TEMPORARY COFFER DAM PLAN AND DETAIL
 Last Plotted: 9/20/2021 1:24:20 PM
 Filename: BIM_360/CHAMER (USA) 60664950 - San Juan Water Commission



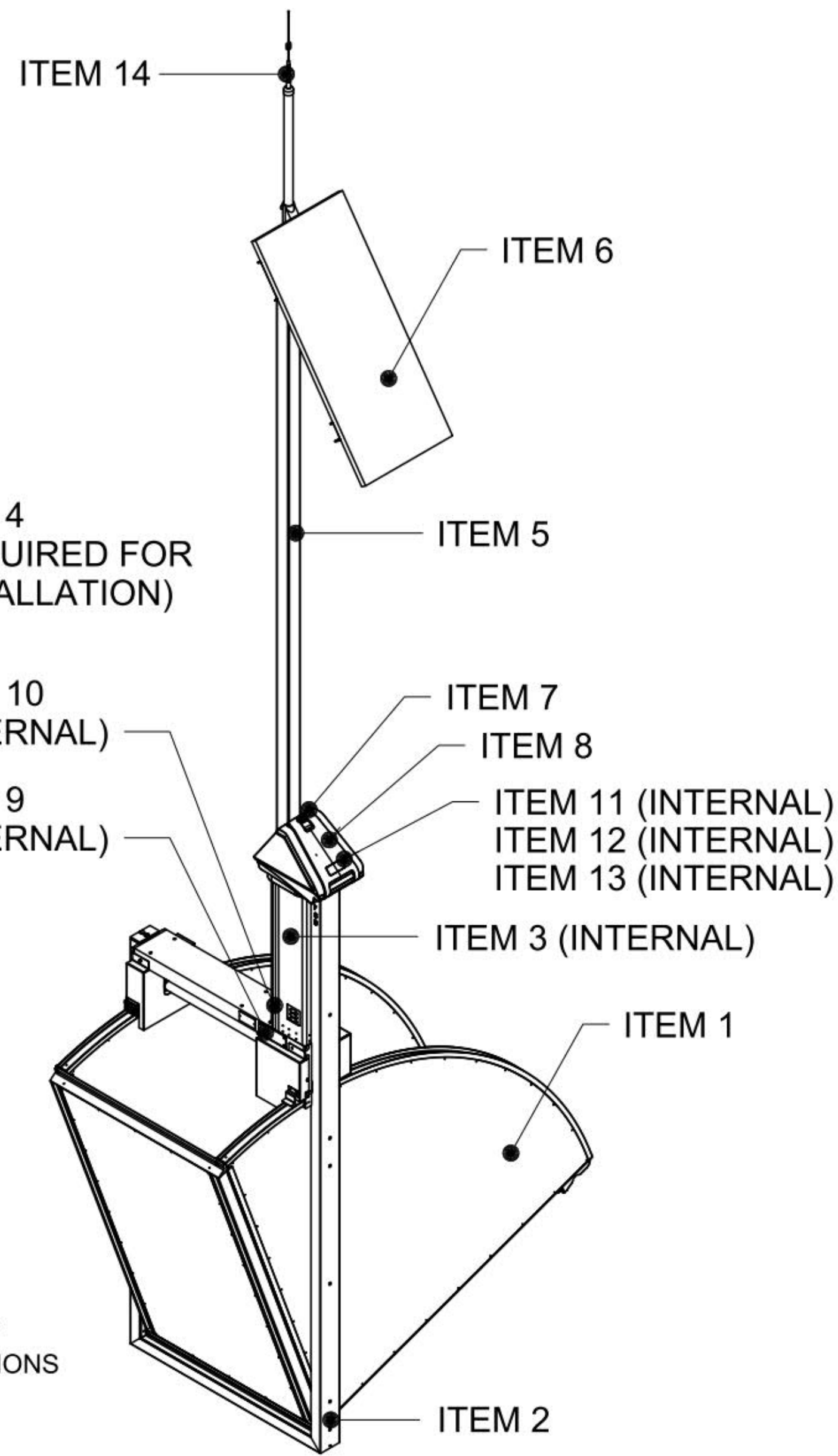
100% NFC

NO.	DATE	DESCRIPTION
1	Sep 17, 2021	100% NFC - Initial Issue

60664950

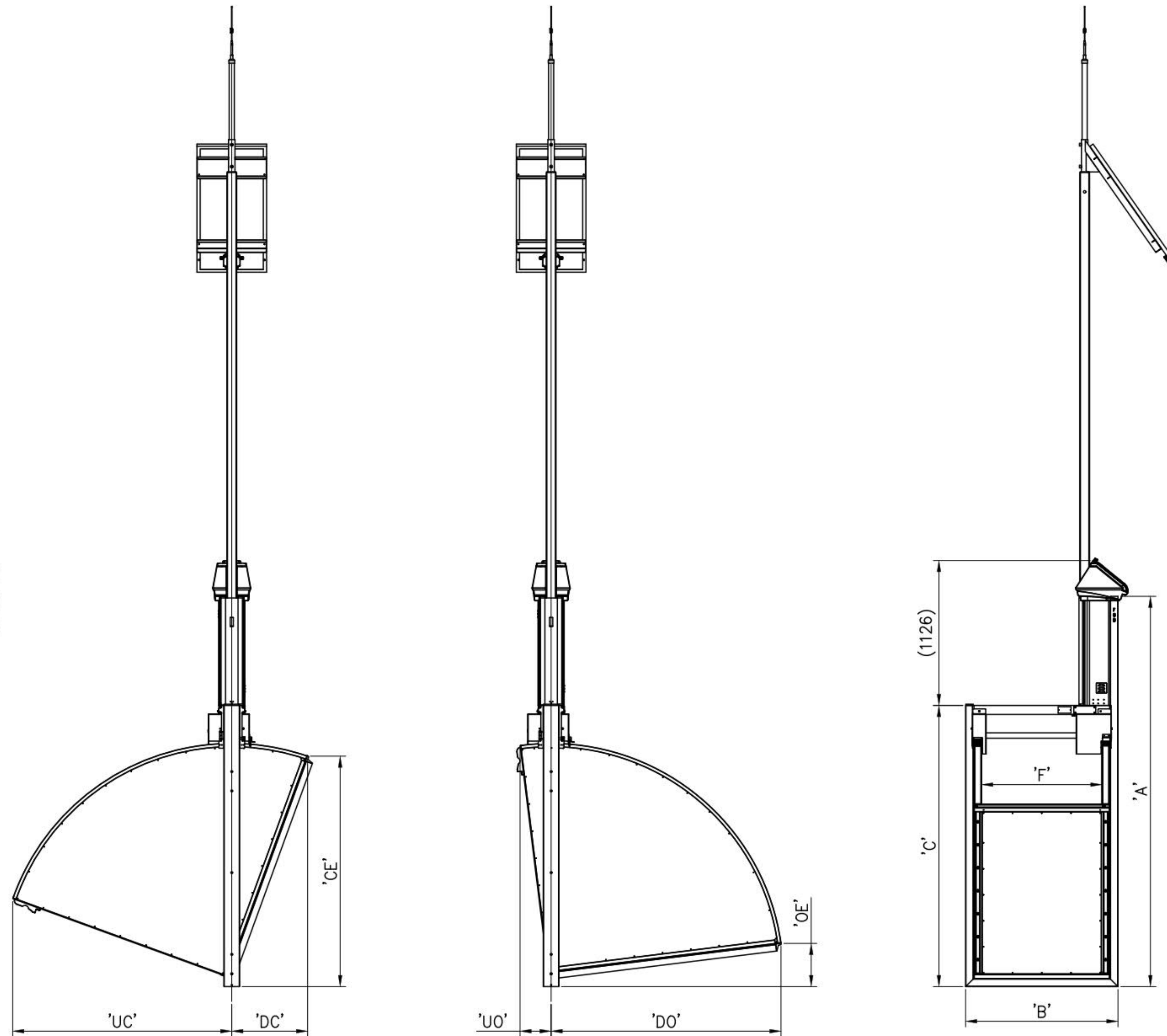
FLUMEGATE DIMENSIONAL
DATA & SELECTION DRAWING

**78763 DD (1 OF
6)**



NOTES:
REFER TO SHEETS
4, 5 & 6 FOR ITEM PART
NUMBERS & DESCRIPTIONS

REFER TO SHEETS
7 & 8 FOR ANCHOR
POSITIONS



REVISIONS	No.	DATE	DESCRIPTION	DRAWN	ECN
	27	12.03.20	UPDATED ANCHOR QUANTITIES FOR 3038 GATES	R.D.	11649
	26	30.01.20	UPDATED ANCHOR GROUP LOADINGS & SKETCH	J.C.	11630
	25	27.08.19	ADDED 81300SD 865-867 MHz RADIO	T.W.	11582
	24	28.06.19	UPDATED 4G MODEM & MDS RADIO NOTES	J.C.	11547
	23	21.03.19	ADDED SURVEILLANCE CAMERA OPTION	E.Y.	11507
	22	07.02.19	ADDED 120W AND 5° SOLAR PANELS	E.Y.	11462
	21	23.01.19	ADDED LITHIUM BATTERIES & RADIO KIT NOTES	J.C.	11451
	20	25.09.18	ADDED COLOUR LCD CONTROLLER HOUSINGS	E.Y.	11426

RUBICON™
1 CATO STREET
HAWTHORN EAST, VIC, 3630
PHONE: (03) 5820 8800
FAX: (03) 5820 8888
1A WHEELER STREET
SHEPPARTON, VIC, 3630
PHONE: (03) 5820 8800
FAX: (03) 5820 8888

COPYRIGHT
THIS DRAWING AND ANY
INFORMATION SET OUT HEREON IS
THE COPYRIGHT PROPERTY OF
RUBICON SYSTEMS AUSTRALIA AND
MUST NOT BE LOANED, MODIFIED,
COPIED OR USED FOR
CONSTRUCTION, MANUFACTURE OR
ANY PURPOSE OTHER THAN THAT
RELATING TO THE PROJECT FOR
WHICH IT WAS PREPARED WITHOUT
WRITTEN PERMISSION FROM
RUBICON SYSTEMS AUSTRALIA

APPLICABLE STANDARDS
RUBICON STANDARDS:
RIS-0001
RIS-0002
RIS-0003
AUSTRALIAN STANDARDS:
AS1100

DESIGNED: M.C.
DRAWN: K.H.
DESIGN CHK: M.C.
DWG CHK: M.C.
MASS: - kg
MATERIAL: -
UNLESS NOTED OTHERWISE, ALL MACHINED SURFACES 3/2

TOLERANCES
(UNLESS OTHERWISE STATED)
UP TO 6mm ±0.1
OVER 6 UP TO 30 ±0.2
OVER 30 UP TO 120 ±0.3
OVER 120 ±0.5
ALL ANGLES ±0.5°
DIMENSIONS IN MILLIMETRES
DO NOT SCALE

DESCRIPTION:
**FLUMEGATE™ DIMENSIONAL
DATA & SELECTION DRAWING**

SHEET No.	DWG. No.	REV.	SIZE
1 OF 8	78763 DD	27	A3

CAD FILE LOCATION: Y:\ENGINEERING\DRAWINGS\78763 DD.dwg

REGISTRATION



100% NFC

ISSUE/REVISION

REV	DATE	DESCRIPTION
1	Sep 17, 2021	100% NFC - Initial Issue

PROJECT NUMBER

60664950

SHEET TITLE

**FLUMEGATE DIMENSIONAL
DATA & SELECTION DRAWING**

SHEET NUMBER

78763 DD (4 OF 6)

FlumeGate Model	Item 1 - Gate Assembly (Part Number)	Item 2 - External Frame		Item 3 - Battery Packs (Part Number)	Item 4 - Gate Mounting Kit (Part Number)	Item 5 - Mast (Part Number)	Item 6 - Solar Panel Assembly (Part Number)	Item 7 - Lock (Part Number)	Item 8 - Viewing Window	Item 9 - Optional Manual Hand Crank (Part Number)	Item 10 - Connector plate (Part Number)	Surveillance Camera (OPTIONAL)	Item 11 - Controller Housing (Part Number)	Item 12 - Radio Mounting kit (Part Number)	Item 13 - Radio (Part Number)	Item 14 - Antenna (Part Number)	Multigate Wiring (OPTIONAL)	Ultrasonic Sensors (OPTIONAL)	Walkways (OPTIONAL)																
		Welded Type (Part Number)	Bolted Type (Part Number)																	Anchor Bushes															
FGB-1485-0620	78244	78885	78698	77171 (Lead Acid, 2 Pack) OR 81202 (Lithium, 3 Pack)	77444 (Master Gates) OR 77445 (Slave Gates)	77314 (Standard)	77085 (80W min, 55°) OR 77185 (80W min, 35°) OR 77186 (80W min, 15°) OR 81235 (80W min, 5°)	CH-0074-WING-R (Regulator)	72792 (Standard Blank)	77340	N/A (Connector plate included)	N/A	73156 (Microhard) OR 81024 (Microhard, Chinese LCD)	MICROHARD RADIO Included	MICROHARD RADIO 73917 (900MHz Nano) OR 81300 (India) (865-867MHz Nano)	See Antenna Data & Selection Drawing 73986 DD	74232 (Loom Kit)	REFER TO ULTRASONIC SALES DRAWING 77356 DD	REFER TO WALKWAY SALES DRAWING 73084 DD																
FGB-0626-0674	78218	78859	78672																	73633	4	77085	77185	77186	81235	81244	81243	81242	81241	74701	81294	81245	75104	81022	75106
FGB-1050-0674	78225	78866	78679																	73633	4	77085	77185	77186	81235	81244	81243	81242	81241	74701	81294	81245	75104	81022	75106
FGB-1370-0674	78237	78878	78691																	73633	4	77085	77185	77186	81235	81244	81243	81242	81241	74701	81294	81245	75104	81022	75106
FGB-1675-0674	78250	78891	78704																	73633	4	77085	77185	77186	81235	81244	81243	81242	81241	74701	81294	81245	75104	81022	75106
FGB-0626-0866	78219	78860	78673																	73633	4	77085	77185	77186	81235	81244	81243	81242	81241	74701	81294	81245	75104	81022	75106
FGB-0760-0866	78222	78863	78676																	73633	4	77085	77185	77186	81235	81244	81243	81242	81241	74701	81294	81245	75104	81022	75106
FGB-1050-0866	78226	78867	78680																	73633	4	77085	77185	77186	81235	81244	81243	81242	81241	74701	81294	81245	75104	81022	75106
FGB-1180-0866	78232	78873	78686																	73633	4	77085	77185	77186	81235	81244	81243	81242	81241	74701	81294	81245	75104	81022	75106
FGB-1370-0866	78238	78879	78692																	73633	4	77085	77185	77186	81235	81244	81243	81242	81241	74701	81294	81245	75104	81022	75106
FGB-1675-0866	78251	78892	78705																	73633	4	77085	77185	77186	81235	81244	81243	81242	81241	74701	81294	81245	75104	81022	75106
FGB-0626-1077	78220	78861	78674																	73633	4	77085	77185	77186	81235	81244	81243	81242	81241	74701	81294	81245	75104	81022	75106
FGB-0760-1077	78223	78864	78677																	73633	4	77085	77185	77186	81235	81244	81243	81242	81241	74701	81294	81245	75104	81022	75106
FGB-1050-1077	78227	78868	78681																	73633	4	77085	77185	77186	81235	81244	81243	81242	81241	74701	81294	81245	75104	81022	75106
FGB-1180-1077	78233	78874	78687																	73633	4	77085	77185	77186	81235	81244	81243	81242	81241	74701	81294	81245	75104	81022	75106
FGB-1370-1077	78239	78880	78693																	73633	4	77085	77185	77186	81235	81244	81243	81242	81241	74701	81294	81245	75104	81022	75106
FGB-1485-1077	78245	78886	78699																	73633	4	77085	77185	77186	81235	81244	81243	81242	81241	74701	81294	81245	75104	81022	75106
FGB-1675-1077	78252	78893	78706																	73633	4	77085	77185	77186	81235	81244	81243	81242	81241	74701	81294	81245	75104	81022	75106
FGB-1790-1077	78257	78898	78711																	73633	4	77085	77185	77186	81235	81244	81243	81242	81241	74701	81294	81245	75104	81022	75106
FGB-0626-1273	78221	78862	78675																	73633	4	77085	77185	77186	81235	81244	81243	81242	81241	74701	81294	81245	75104	81022	75106
FGB-0760-1273	78224	78865	78678	73633	4	77085	77185	77186	81235	81244	81243	81242	81241	74701	81294	81245	75104	81022	75106																
FGB-1050-1273	78228	78869	78682	73633	4	77085	77185	77186	81235	81244	81243	81242	81241	74701	81294	81245	75104	81022	75106																
FGB-1180-1273	78234	78875	78688	73633	4	77085	77185	77186	81235	81244	81243	81242	81241	74701	81294	81245	75104	81022	75106																
FGB-1370-1273	78240	78881	78694	73633	4	77085	77185	77186	81235	81244	81243	81242	81241	74701	81294	81245	75104	81022	75106																
FGB-1485-1273	78246	78887	78700	73633	4	77085	77185	77186	81235	81244	81243	81242	81241	74701	81294	81245	75104	81022	75106																
FGB-1675-1273	78253	78894	78707	73633	4	77085	77185	77186	81235	81244	81243	81242	81241	74701	81294	81245	75104	81022	75106																
FGB-1050-1437	78229	78870	78683	73633	8	77085	77185	77186	81235	81244	81243	81242	81241	74701	81294	81245	75104	81022	75106																
FGB-1180-1437	78235	78876	78689	73633	8	77085	77185	77186	81235	81244	81243	81242	81241	74701	81294	81245	75104	81022	75106																
FGB-1370-1437	78241	78882	78695	73633	8	77085	77185	77186	81235	81244	81243	81242	81241	74701	81294	81245	75104	81022	75106																
FGB-1485-1437	78247	78888	78701	73633	8	77085	77185	77186	81235	81244	81243	81242	81241	74701	81294	81245	75104	81022	75106																
FGB-1675-1437	78254	78895	78708	73633	8	77085	77185	77186	81235	81244	81243	81242	81241	74701	81294	81245	75104	81022	75106																
FGB-1050-1587	78230	78871	78684	73633	10	77085	77185	77186	81235	81244	81243	81242	81241	74701	81294	81245	75104	81022	75106																
FGB-1180-1587	78236	78877	78690	73633	10	77085	77185	77186	81235	81244	81243	81242	81241	74701	81294	81245	75104	81022	75106																
FGB-1370-1587	78242	78883	78696	73633	10	77085	77185	77186	81235	81244	81243	81242	81241	74701	81294	81245	75104	81022	75106																
FGB-1485-1587	78248	78889	78702	73633	10	77085	77185	77186	81235	81244	81243	81242	81241	74701	81294	81245	75104	81022	75106																
FGB-1675-1587	78978	78984	78709	73633	10	77085	77185	77186	81235	81244	81243	81242	81241	74701	81294	81245	75104	81022	75106																
FGB-1790-1587	78258	78899	78712	73633	10	77085	77185	77186	81235	81244	81243	81242	81241	74701	81294	81245	75104	81022	75106																
FGB-2268-1587-80	72960	72985	72984	73634	10	77085	77185	77186	81235	81244	81243	81242	81241	74701	81294	81245	75104	81022	75106																
FGB-2886-1587	74300	74317	74315	73634	10	77085	77185	77186	81235	81244	81243	81242	81241	74701	81294	81245	75104	81022	75106																
FGB-1050-1804	78231	78872	78685	73633	10	77085	77185	77186	81235	81244	81243	81242	81241	74701	81294	81245	75104	81022	75106																
FGB-1180-1804	74650	74657	74658	73633	10	77085	77185	77186	81235	81244	81243	81242	81241	74701	81294	81245	75104	81022	75106																
FGB-1370-1804	78243	78884	78697	73633	10	77085	77185	77186	81235	81244	81243	81242	81241	74701	81294	81245	75104	81022	75106																
FGB-1485-1804	78249	78890	78703	73633	10	77085	77185	77186	81235	81244	81243	81242	81241	74701	81294	81245	75104	81022	75106																
FGB-1675-1804	78979	78985	78710	73633	10	77085	77185	77186	81235	81244	81243	81242	81241	74701	81294	81245	75104	81022	75106																
FGB-1675-2186	78801	78938	78840	73634	10	77085	77185	77186	81235	81244	81243	81242	81241	74701	81294	81245	75104	81022	75106																
FGB-1790-2186	78802	78939	78841	73634	10	77085	77185	77186	81235	81244	81243	81242	81241	74701	81294	81245	75104	81022	75106																
FGB-2268-2186	78803	78940	78842	73634	10	77085	77185	77186	81235	81244	81243	81242																							

