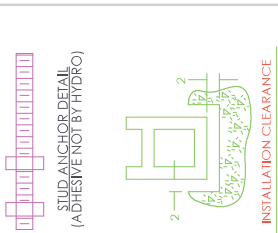
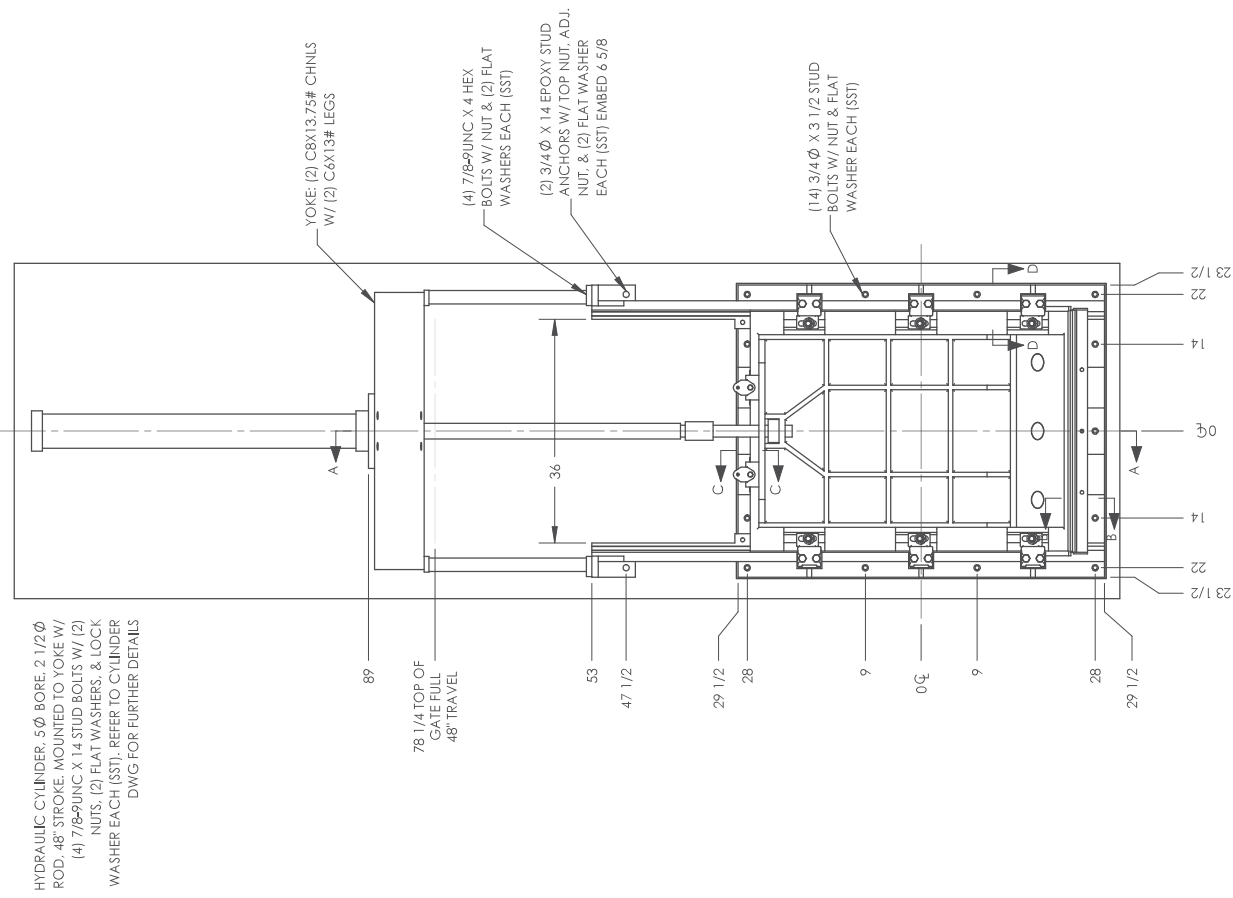
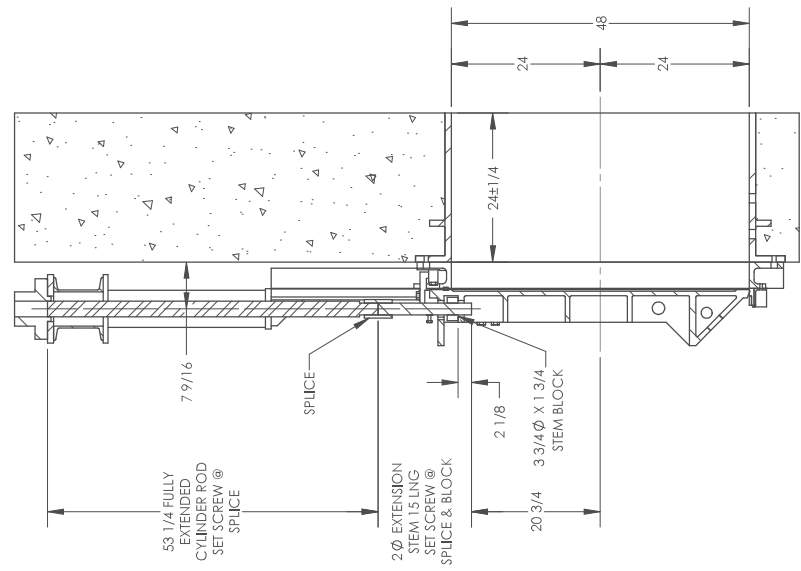


SEE SHEET 2 FOR ADDITIONAL SECTION VIEWS



ESTIMATED WEIGHTS:  
GATE ASSY - 1,769 LBS  
THIMBLE - 1,435 LBS  
YOKE - 232 LBS

INSTALLATION CLEARANCE



- NOTES:
1. ALL DIMENSIONS IN INCHES UNLESS NOTED OTHERWISE.
  2. SEE MANUAL C1000 FOR INSTALLATION AND ADJUSTMENT INSTRUCTIONS.
  3. CASTING TOLERANCES APPLY ON ALL UNMACHINED SURFACES.
  4. MATERIAL SPECIFICATIONS AND COATINGS PER DWG: 2933159500
  5. GATE DESIGN SEATING HEAD (FROM  $\phi$  ): 80.00"
  6. GATE DESIGN UNSEATING HEAD (FROM  $\phi$  ): 0.00"
  7. GATE OPERATING HEAD (FROM  $\phi$  ): 80.00"
  8. TAG: CONTROL GATE
  9. LOCATION: GROUNDHOG RESERVOIR - CORTEZ, CO
  10. REFERENCE SPECIFICATIONS: N/A
  11. REFERENCE PLAN DRAWINGS: N/A
  12. PLEASE CONFIRM GATE SIZE, TRAVEL DISTANCE, AND INVERT CONFIGURATION.

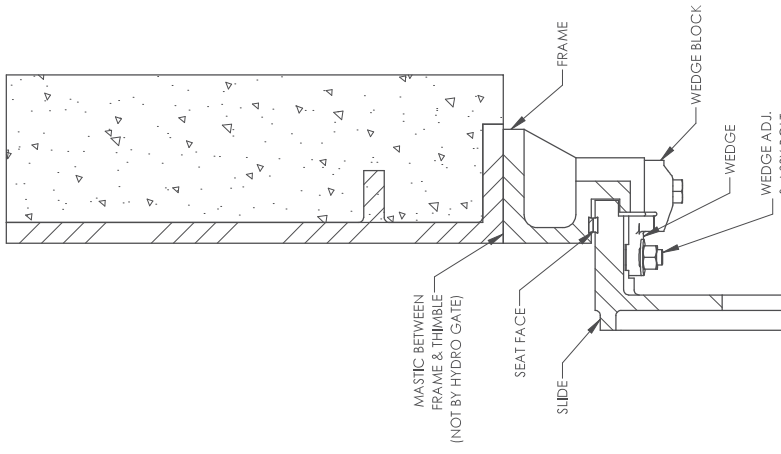
**HYDRO**  
**GATE**

36" X 48" SLIDE GATE SERIES HG-560  
SELF-CONTAINED, CYL OPERATED, THIM. MOUNT

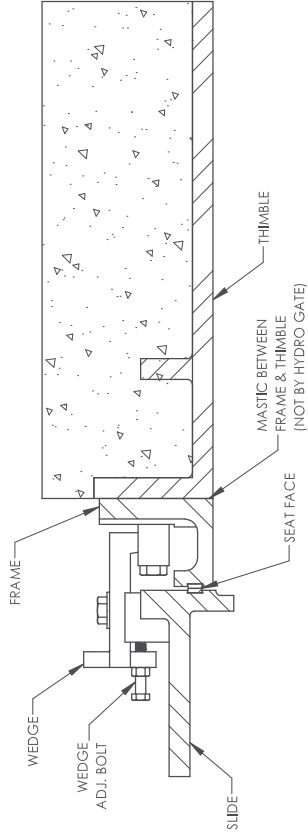
QUANTITY: 2 MATERIAL: CAST IRON SCALE: 1:20 SHT 1:2

THIS IS A PROPRIETARY DESIGN OF HYDRO GATE, LLC. THE DESIGN, DATA AND DIMENSIONS ARE SUBJECT TO CHANGE WITHOUT NOTICE. THIS DRAWING IS REPRODUCED IN WHOLE OR IN PART WITHOUT THE EXPRESS WRITTEN CONSENT OF HYDRO GATE, LLC.

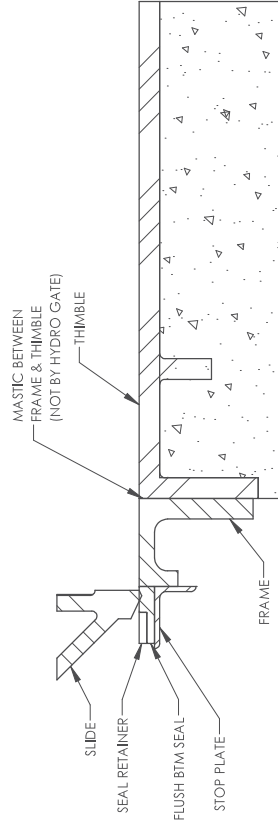
DRAWN BY	CUSTOMER NO.	SALES
DSG	21-111	29-33159
CHECKED BY	DATE	DRAWING NO.
	3/26/21	29-33159-01



SECTION D-D  
SCALE 1 : 6



SECTION C-C  
SCALE 1 : 6



SECTION B-B  
SCALE 1 : 6

**HYDRO GATE**

36" X 48" SLIDE GATE SERIES HG560  
SELF-CONTAINED, CYL OPERATED, THIM. MOUNT

QUANTITY: 2 MATERIAL: CAST IRON SCALE: 1:20 SHT 2:2

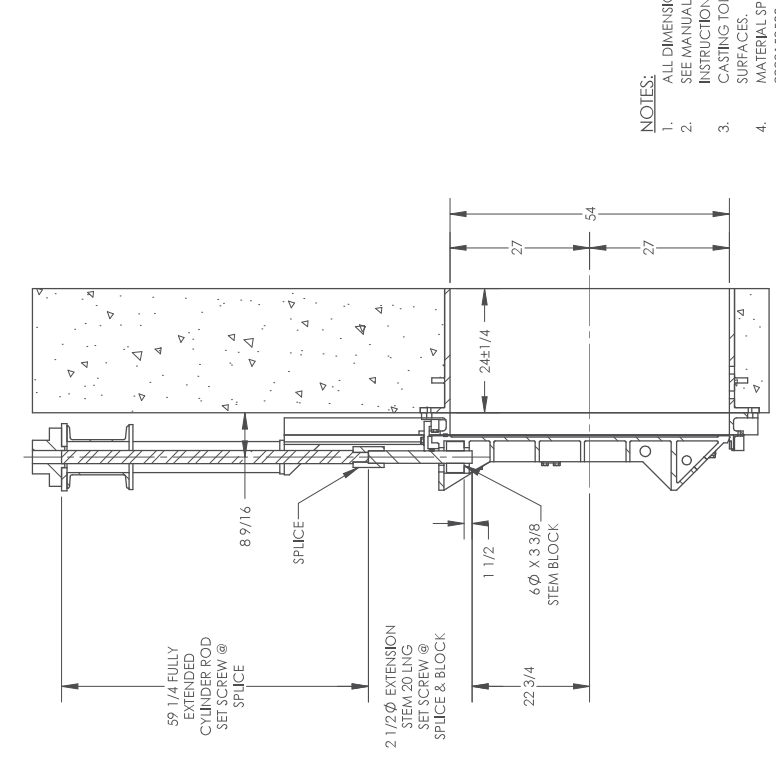
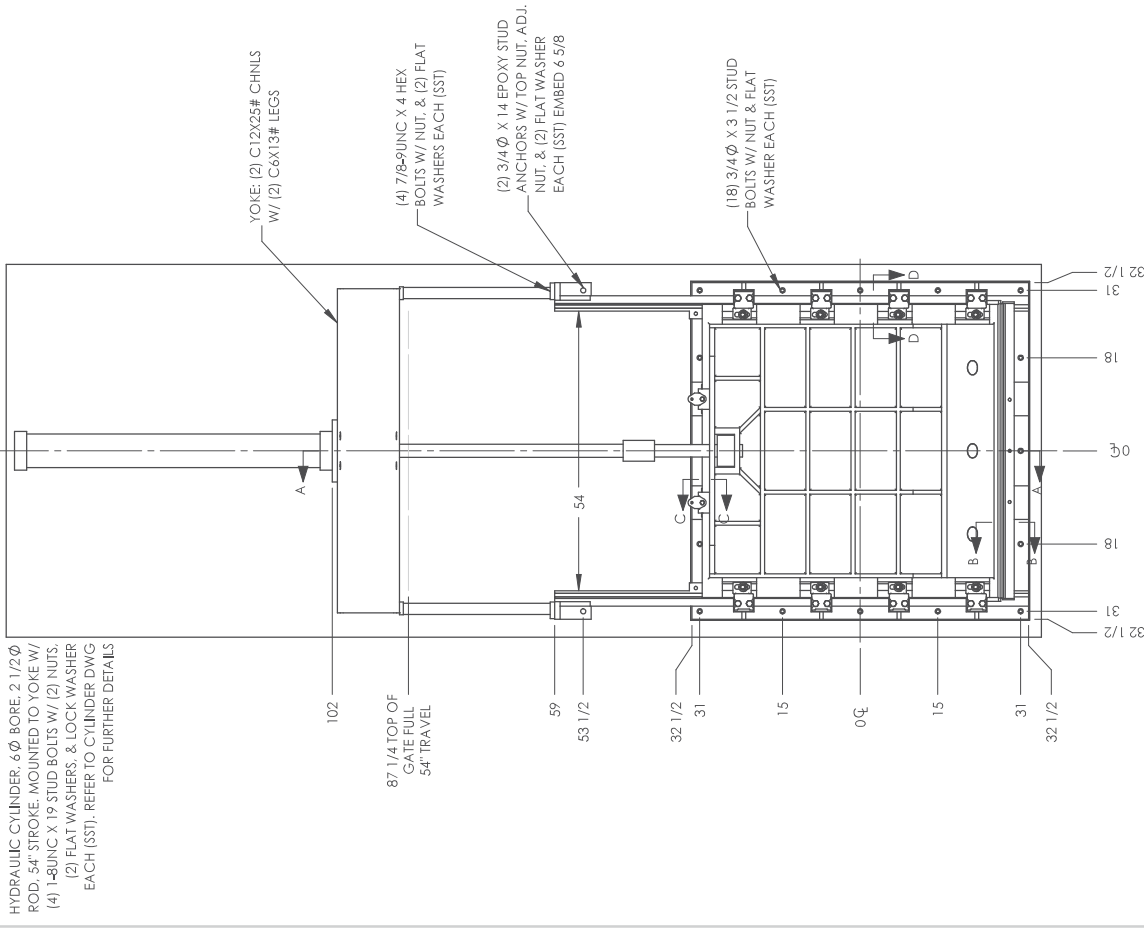
THIS IS A PROPRIETARY DESIGN OF HYDRO GATE, LLC. THE DESIGN, DATA AND DIMENSIONS ARE NOT TO BE REPRODUCED IN WHOLE OR IN PART WITHOUT THE EXPRESS WRITTEN CONSENT OF HYDRO GATE, LLC.

REV	DATE	INITIALS	DRAWN BY	CUSTOMER NO.	SALES
			DSG	21-111	29-33159
			CHECKED BY	DATE	DRAWING NO.
				3/26/21	29-33159-01

SEE SHEET 2 FOR ADDITIONAL SECTION VIEWS



ESTIMATED WEIGHTS:  
 GATE ASSY - 2,562 LBS  
 THIMBLE - 1,825 LBS  
 YOKE - 411 LBS



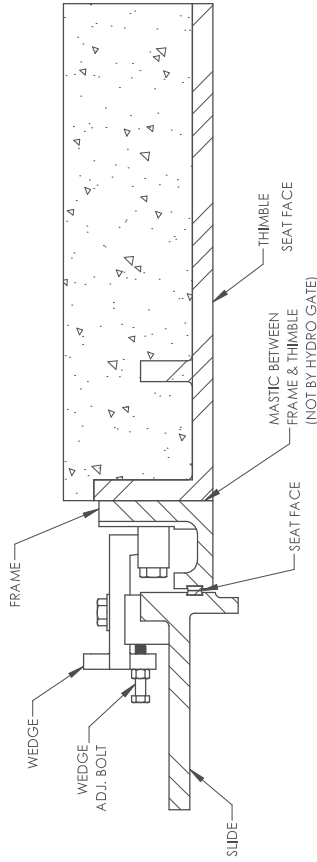
SECTION A-A

- NOTES:
1. ALL DIMENSIONS IN INCHES UNLESS NOTED OTHERWISE.
  2. SEE MANUAL G1000 FOR INSTALLATION AND ADJUSTMENT INSTRUCTIONS.
  3. CASTING TOLERANCES APPLY ON ALL UNMACHINED SURFACES.
  4. MATERIAL SPECIFICATIONS AND COATINGS PER DWG: 2933159500
  5. GATE DESIGN SEATING HEAD (FROM Q. J): 80.00'
  6. GATE DESIGN UNSEATING HEAD (FROM Q. J): 0.00'
  7. GATE OPERATING HEAD (FROM Q. J): 80.00'
  8. TAG: GUARD GATE
  9. LOCATION: GROUNDHOG RESERVOIR - CORTEZ, CO
  10. REFERENCE SPECIFICATIONS: N/A
  11. REFERENCE PLAN DRAWINGS: N/A
  12. PLEASE CONFIRM GATE SEE, TRAVEL DISTANCE, AND INVERT CONFIGURATION.

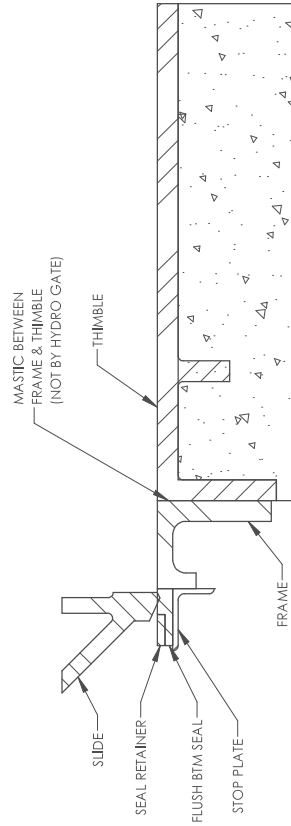


54" X 54" SLIDE GATE SERIES HG-560  
 SELF-CONTAINED, CYL OPERATED, THIM. MOUNT

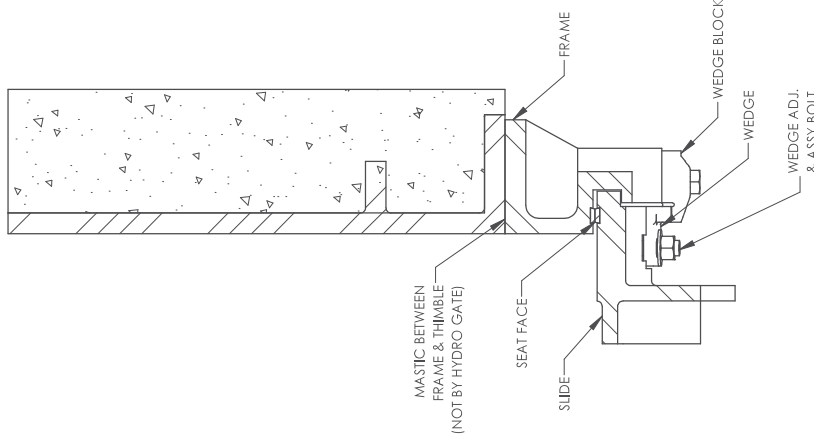
QUANTITY: 1	MATERIAL: CAST IRON	SCALE: 1:24	SHT 1:2
THIS IS A PROPRIETARY DESIGN OF HYDRO GATE, LLC. THE DESIGN, DATA AND DIMENSIONS ARE NOT TO BE REPRODUCED OR TRANSMITTED IN ANY FORM OR BY ANY MEANS, ELECTRONIC OR MECHANICAL, WITHOUT THE EXPRESS WRITTEN CONSENT OF HYDRO GATE, LLC.			
DRAWN BY	CUSTOMER NO.	SALES	
DSG	21-111	2933159	
CHECKED BY	DATE	DRAWING NO.	
	3/29/21	2933159-02	



SECTION C-C  
SCALE 1 : 6



SECTION B-B  
SCALE 1 : 6



SECTION D-D  
SCALE 1 : 6

**HYDRO GATE**

54" X 54" SLIDE GATE SERIES HG560  
SELF-CONTAINED, CYL OPERATED, THIM. MOUNT

QUANTITY: 1	MATERIAL: CAST IRON	SCALE: 1:20	SHT 2:2
THIS IS A PROPRIETARY DESIGN OF HYDRO GATE, LLC. THE DESIGN, DATA AND INFORMATION CONTAINED HEREIN ARE UNCLASSIFIED AND NOT BE REPRODUCED IN WHOLE OR IN PART WITHOUT THE EXPRESS WRITTEN CONSENT OF HYDRO GATE, LLC.			
DRAWN BY	DWG NO.	CUSTOMER NO.	SALES
DSG	21-111	29-33159	29-33159
CHECKED BY	DATE		DRAWING NO.
	3/29/21		29-33159-02

MATERIAL SPECIFICATIONS

COATING SPECIFICATIONS

GATE PART OR ITEM OF ASSEMBLY	MATERIAL DESCRIPTION	MATERIAL CODE	MATERIALS SHOWN IN ASTM SPECIFICATION UNLESS NOTED OTHERWISE
<u>EMBEDMENTS</u>			
ANCHOR BOLTS	STAINLESS STEEL	(P)	F593, ALLOY GROUP 2 (316)
ANCHOR BOLT NUTS	STAINLESS STEEL	(P)	F594, ALLOY GROUP 2 (316)
WALL THIMBLE	CAST IRON	(A)	A126, CLASS B
WALL THIMBLE STUDS	STAINLESS STEEL	(P)	F593, ALLOY GROUP 2 (316)
WALL THIMBLE NUTS	STAINLESS STEEL	(P)	F594, ALLOY GROUP 2 (316)
<u>GATE ASSEMBLY</u>			
FRAME AND SLIDE	CAST IRON	(A)	A126, CLASS B
SEATING FACES	NAVAL BRONZE	(F)	B21, ALLOY 482
SIDE WEDGE BLOCKS	MANGANESE BRONZE	(K)	B584, ALLOY 862
SIDE WEDGES	MANGANESE BRONZE	(K)	B584, ALLOY 862
TOP AND BOTTOM WEDGES	MANGANESE BRONZE	(K)	B584, ALLOY 862
FASTENERS	STAINLESS STEEL	(P)	F593 (BOLTS), ALLOY GROUP 2 (316) F594 (NUTS), ALLOY GROUP 2 (316)
STOP PLATE AND RETAINER	STAINLESS STEEL	(L)	A276, TYPE 304
FLUSH BOTTOM SEAL	EPDM	(C)	D2000, GRADE 1BE615
<u>STEM AND ACCESSORIES</u>			
STEM	STAINLESS STEEL	(L)	A276, TYPE 304
STEM SPLICE	STAINLESS STEEL	(M)	A582, TYPE 303
STEM BLOCK	MANGANESE BRONZE	(K)	B584, ALLOY 865
SET SCREW	STAINLESS STEEL	(P)	F593, ALLOY GROUP 2 (316)
<u>LIFT ASSEMBLY</u>			
FABRICATED YOKE	CARBON STEEL	(V)	A36
FASTENERS	STAINLESS STEEL	(P)	F593 (BOLTS), ALLOY GROUP 2 (316) F594 (NUTS), ALLOY GROUP 2 (316)

CLEANING:  BLAST CLEAN (PER STEEL STRUCTURES PAINTING COUNCIL) NEAR WHITE BLAST GRADE \_\_\_\_\_ SSFC-SP10

SUBMERSIBLE COATING: AMERON, AMERLOCK 400 HIGH SOLIDS EPOXY COLOR GR-2 MEDIUM GRAY 2 - 3 SHOP COATS FOR A TOTAL DRY FILM THICKNESS OF 12 MILS MIN.

FOR THE FOLLOWING COMPONENTS:  
 WALL THIMBLE  GATE  
 FABRICATED YOKE

NON-SUBMERGED COATING: (PRIME COAT) AMERON, AMERLOCK 400 HIGH SOLIDS EPOXY COLOR GR-2 MEDIUM GRAY ONE SHOP COATS FOR A TOTAL DRY FILM THICKNESS OF 5 MILS MIN.

NON-SUBMERGED COATING: (TOP COAT) AMERON, AMERCOAT 450H POLYURETHANE COLOR GR-2 MEDIUM GRAY ONE SHOP COATS FOR A TOTAL DRY FILM THICKNESS OF 3 MILS MIN.

FOR THE FOLLOWING COMPONENTS:  
 NONE

NOTES:  
 1. SEATING SURFACES MACHINED TO 63 MICRO-INCH FINISH.  
 2. 004 CLEARANCE CHECK PROVIDED ON SEATING SURFACES BETWEEN FRAME AND SLIDE.  
 3. SURFACES EMBEDDED IN CONCRETE ARE NOT PAINTED.  
 4. WALL THIMBLES ARE STAMPED WITH THE WORD "TOP" FOR ALIGNMENT.

**HYDRO GATE**

REV.	DATE	INITIALS	CUSTOMER NO.	SALES
			21-111	2933159
DRAWN BY DSG			CHECKED BY	DRAWING NO. 2933159
			DATE 4/4/21	2933159500

**MATERIAL AND COATING SPECIFICATIONS FOR HG560 HEAVY DUTY SLUCE GATES**  
 THIS IS A PROPRIETARY DESIGN OF HYDRO GATE. THE DESIGN DATA AND INFORMATION RELATING THERE TO IS NOT TO BE USED, DISSEMINATED OR REPRODUCED IN WHOLE OR IN PART WITHOUT THE EXPRESS WRITTEN CONSENT OF HYDRO GATE.