

Quick Cafe Standard

The Portable Equipment Storage Solution
For School Food Service

Door Operator: LiftMaster

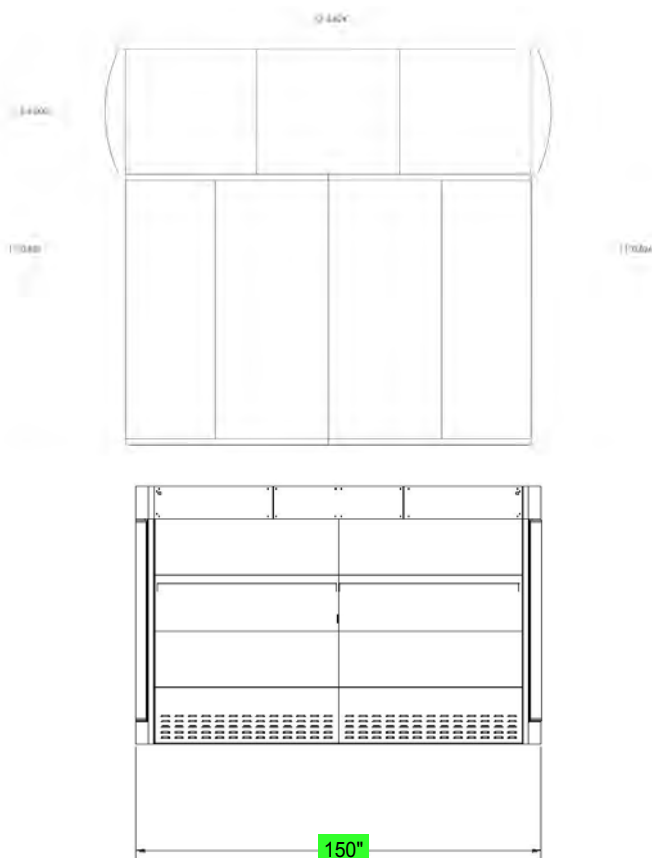
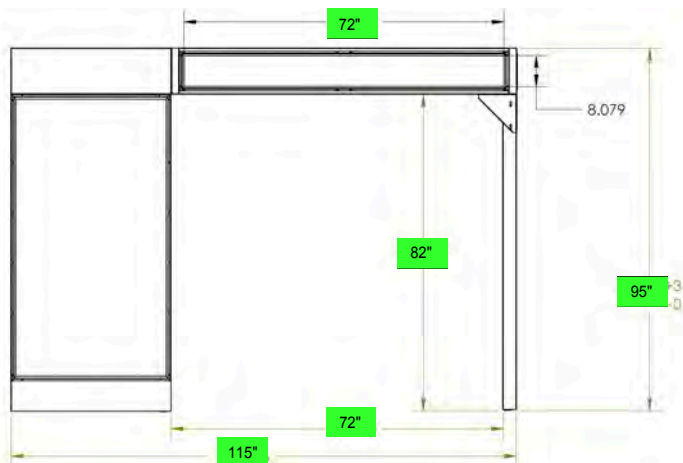
Safety Standards

- Meets UL 325 Safety Standards
 - Commercial Safety Sensors
 - Safeguard facility access with Security + 2.0 technology, opening for registered devices only
 - Battery back-up included
 - Mechanical door release included
 - Commercial Power
- Current Rating
120V AC, 60Hz Voltage, 1.5A Current Rating
UL® Listed



Specifications:

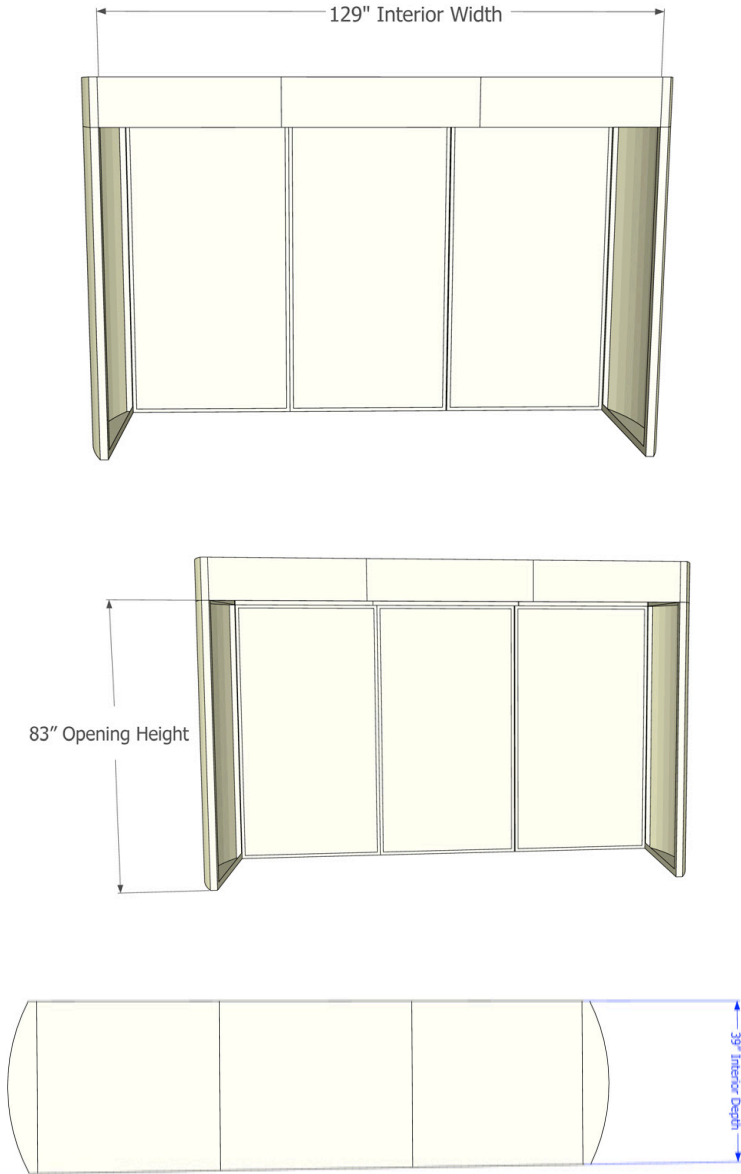
- Steel panel construction: 16ga Electro Galvanize (EG)
- Aluminum panel construction: 5052-H32
- Molding construction: 5052-H32 Aluminum
- Door construction: G96 galvanize. max WL 80mph
- Finish: Polyurethane powder coat.
- Ad Panels: Lexan .125
- Stainless Exterior Hardware
- Max WL: 848.16lbs (rear) (52.9mph wind gust)
- Max WL: 1293lbs (side) (115mph wind gust)
- Snow load: 18.8 PSF
- Weight: 980lbs



Quick Cafe Standard

The Portable Equipment Storage Solution
For School Food Service

Interior Dimensions

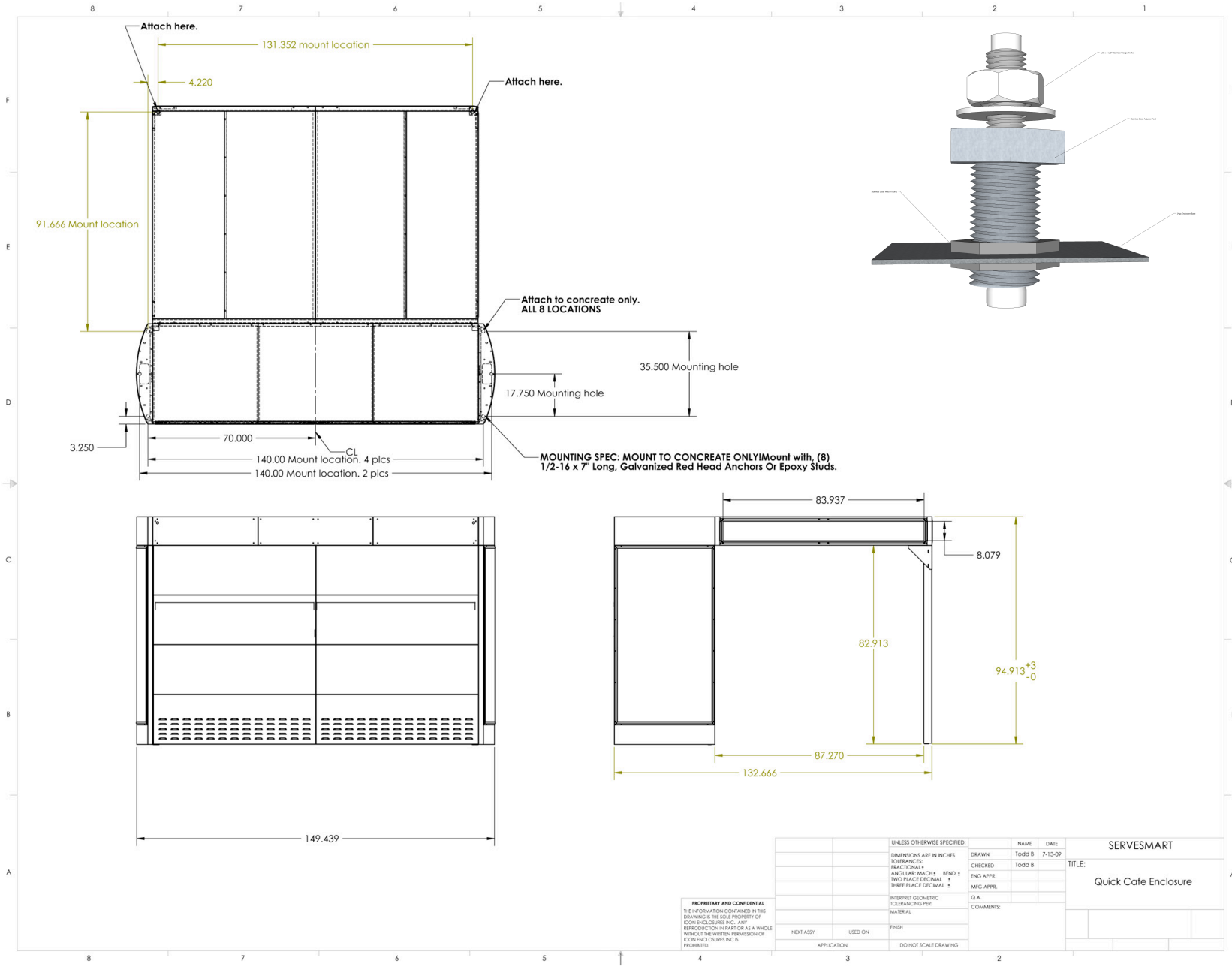


Quick Cafe Standard

The Portable Equipment Storage Solution For School Food Service



Anchor Detail-Standard Quick Cafe:



UNLESS OTHERWISE SPECIFIED:		NAME	DATE	SERVESMART
DIMENSIONS ARE IN INCHES		Todd B	7-13-09	
TOLERANCES:		CHECKED		TITLE: Quick Cafe Enclosure
FRACTIONALS		END APPL		
ANGULAR MATCHES BEND 4		SPEC APPL		
TWO PLACE DECIMAL 1		G.A.		
THREE PLACE DECIMAL 1		COMMENTS:		
INTERPRET GEOMETRIC TOLERANCING PER:				
MATERIAL:				
PROPRIETARY AND CONFIDENTIAL	THE INFORMATION CONTAINED IN THIS DRAWING IS THE SOLE PROPERTY OF ICON ENCLLOSURES INC. ANY REPRODUCTION IN PART OR AS A WHOLE WITHOUT THE WRITTEN PERMISSION OF ICON ENCLLOSURES INC IS PROHIBITED.			
NEXT ASSY	USED ON	FINISH		
APPLICATION		DO NOT SCALE DRAWING		

