

MotoBars



Backpack mounts
included

Create eating areas for
students in any
location.

(3) Heights:
-Elementary
-Middle-High School
-Landscap Wall-Low



CLIENT: Santana Wildcats
DATE: 06.17.21 VERSION: 1.00
PROJECT: Motobar with Umbrella

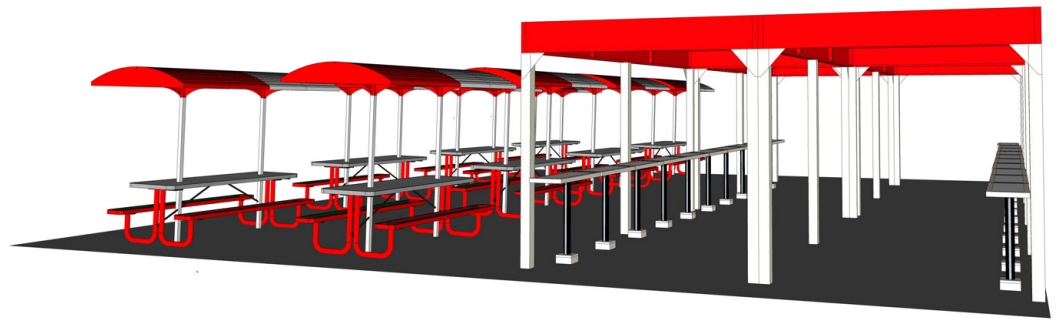
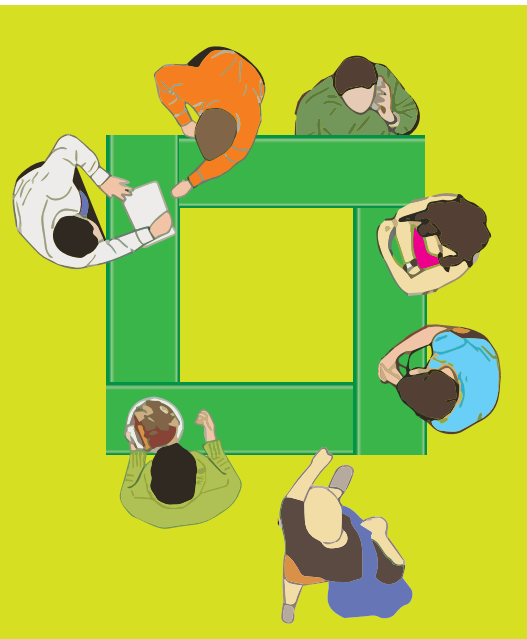
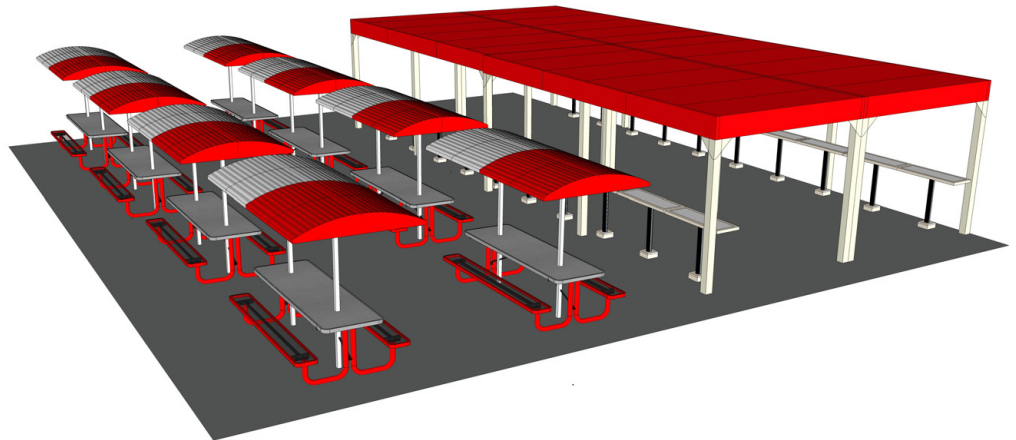
Features Include:

- *Your Choice of Color*
- *Embedded Table Top Graphics*
- *Multiple Height Models For Elementary Students*
- *Back Pack "Hangers"*
- *Optional Solar Lighting*
- *Optional Seating*

619.562.1486

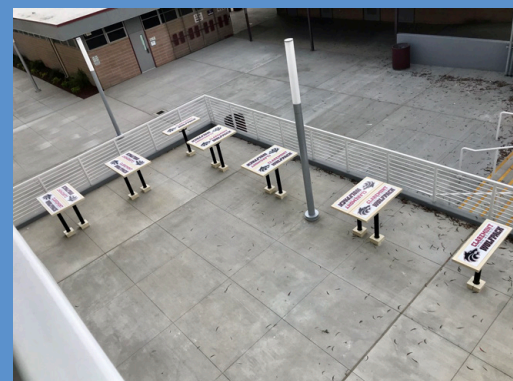


Free Standing



Durable Construction-Simple Installation:

- *Unlimited Configurations*
- *Steel-Aluminum Materials*
- *Durable Powder Coat Finish*
- *Tamper Proof Mounting*



New RealShade Tables

Custom colors and graphics to match your school

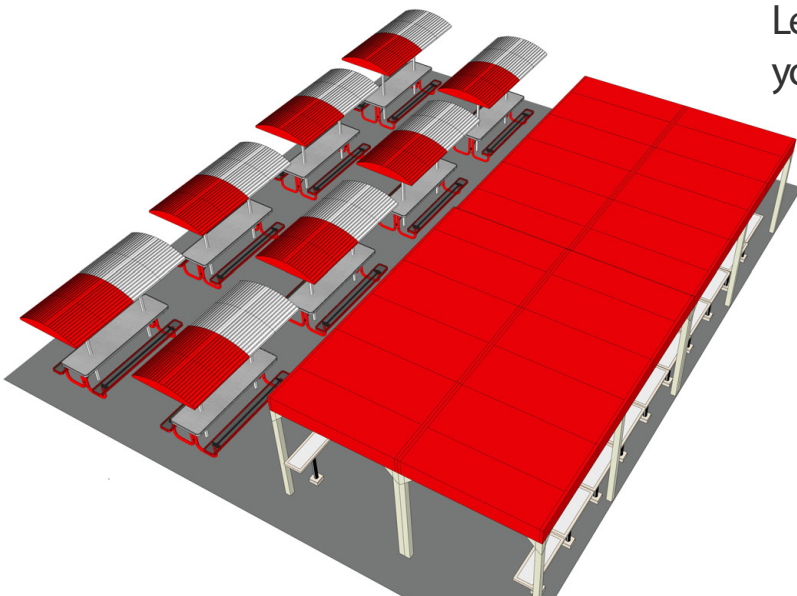


CLIENT: Waterford High
DATE: 04.20.22 | VERSION: 1.00
PROJECT: Pic-Nick Shade Table

Our Tables Include
Large Aluminum
Shade Structures
That Cover
Students While
Eating-Real Shade



Let us help you utilize
your eating area space



Railing Mount



Create new eating areas in the unused areas on your campuses.



Nutrition Messages

Custom graphics

Custom graphic design included



Walnut Grove
HOME OF THE HAWKS



This rendering is intended for representative purposes only. Logos and images used in this design may not be suitable for final production.

© 2018 SERVE SMART K-12 PRODUCTS
All rights reserved. No part of this publication may be reproduced, stored in a retrieval system, or transmitted, in any form or by any means, electronic, mechanical, photocopying, recording, or by any information storage and retrieval system, without the prior written permission of SERVE SMART K-12 PRODUCTS.

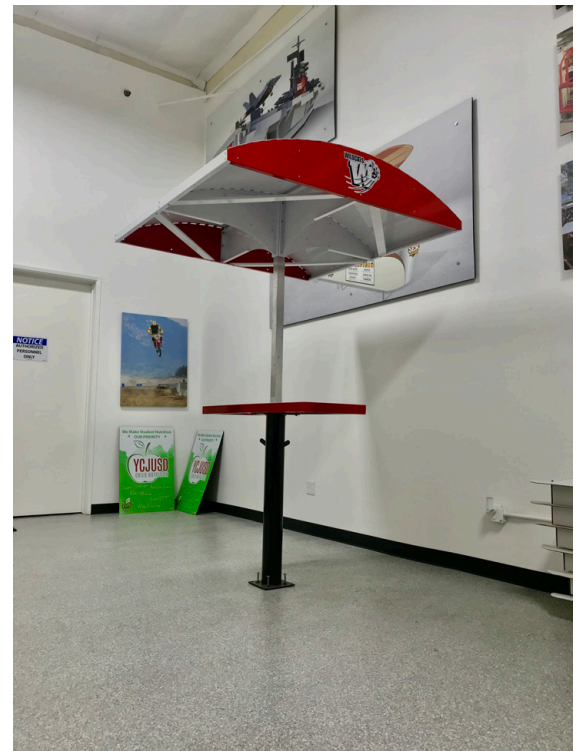
Functional Solutions:

- Create "Social Hot Spots"
- Serve-n-Eat Stations
- Install Near Your Existing Quick Cafe Enclosures
- Portable-Relocate If Necessary
- Create Breakfast Specific Eating Areas

619.562.1486



New Shade Structures For MotoBars



MotoBars

Specifications:

16ga electro galvanized steel type, CS type A: 20G/20G; NCT Oil, .125 wall tubing.

Finish Specifications:

Exterior finish 2.5 mil. Polyurethane powder coat. Color to be selected by customer.

Dimensions:

46" (W) x 28"-42" (H) x 16'(D)-K-8 and High School Models

Includes (4) high grade concrete mounting fasteners and tamper proof base cover.

Customs sizes and mounting configurations available.
Tamper proof fastener covers.

Graphic Panel Specifications:

Graphic image printed on MotoBar top then clear coat powder coated for durability.

Graphic design per customer's request. Graphic design service included.

Options include: solar powered lighting. ID poles with custom signs. MotoBar bench seating.



Concrete Mounting systems includes security cover

