

Blue Heron Bridge

One of the premiere shore diving locations in all of South Florida is actually on the Intracoastal Waterway just inside of the Lake Worth Inlet, and just past the Force-E Riviera Dive Shop. Blue Heron Bridge diving is a macro photographer's dream! There's seahorses, pipefish, decorator crabs, batfish, and other rare and exotic species of sea life, all in a relatively small area and all at depths ranging from 6 to 16 feet.

The best time to dive the bridge is between a half hour before and after high tide (also known as "Slack Tide"). For tide information, look at NOAA Station ID: 8722588 – Port of West Palm Beach, Florida. You can also just download the [Blue Heron Bridge Tide Table - NOAA Tides](#). Force-E Riviera Dive Shop has very experienced guides for hire to show you the best places to find your favorite critters. Stop by their Riviera Beach location, just 2 blocks from the bridge, and pick up a free site map.

The entrance to the park is on the East side of the Blue Heron Boulevard Bridge about a quarter mile east of our store. There is plenty of parking. Enter the water under the bridge via the small beach on the west side of the park. Swim to the right and go back under the bridge from south to north. Continue past the bridge to the foundation of the old bridge. There are old concrete columns that lie just north of the old bridge foundation.

Night Diving the BHB Special Info

Be aware of the posted times for park hours for the public to use the park. Individuals cannot dive at the park at night without a permit. So come check out Force-E's FREE Blue Heron Bridge night dives held every 2 weeks. Force-E has a permit with the park to allow divers in after posted hours, but you must sign in with Force-E before you go and get a parking permit. Check out our dates for these night dives on [Meetup.com](#) or [Force-E Facebook page](#). Also at night all divers must have their own dive light and their dive flag must be lit with a glow stick or dive beacon. Please make sure you understand all the diving guidelines before diving at the bridge either day or night.

CAUTION: Do not swim too far to the west into the boat channel. Don't go west of the fourth set of bridge columns. Be considerate to fisherman on the old bridge.

SCUBA DIVING & SNORKELING AT THE
BLUE HERON BRIDGE
BROUGHT TO YOU BY: PuraVidaDivers.com



DANGER!
Boat Channel
DO NOT ENTER!

DANGER!
Boat Ramp & Channel
DO NOT ENTER!

DANGER!
Boat Channel
DO NOT ENTER!

BEWARE OF FISHING LINE
Fishing Pier

FISHING AREA
FISHING AREA

Blue Heron Blvd.

Guarded Swim Area
DO NOT SUBMERGE

Swim Area
Boat Exclusion Area

Great diving areas.
Explore under the bridges, too!

DANGER!
Boat Channel
DO NOT ENTER!

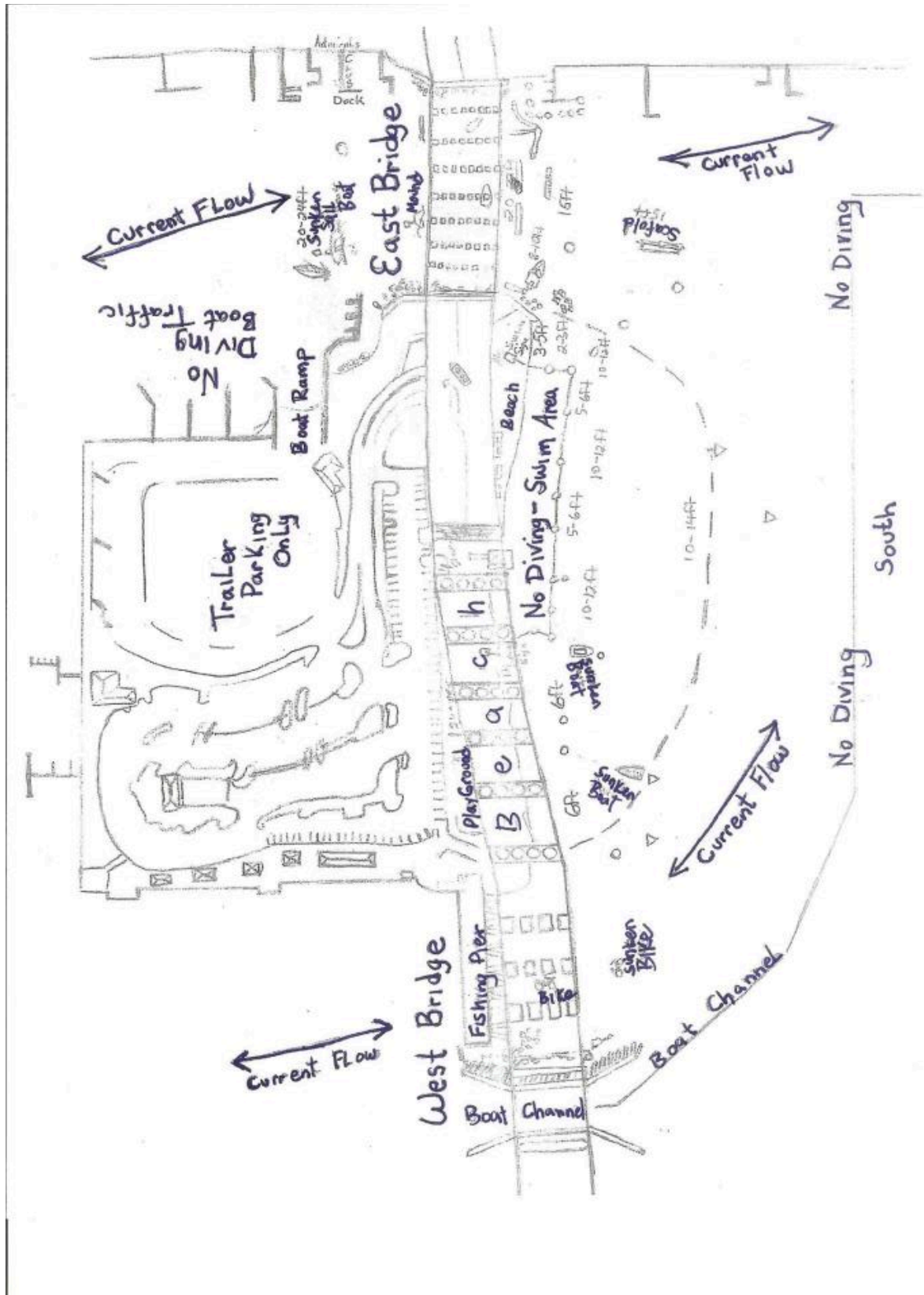
IMPORTANT NOTICE:
Dive and snorkel areas can change from what is shown on this map. Please contact us for updates.

DANGER!
Boat Channel - DO NOT ENTER!

High Tide
Current Flow

High Tide
Current Flow





Site map of the Blue Heron Bridge

There are bathrooms and a shower on-site plus you can make it fun hangout because there are BBQ areas and tables to make a day of the diving.

The Blue Heron Bridge is a photographer's dream. This dive is America's muck dive, meaning the sand and mud their can create homes for many tiny critters like nudibranchs, frogfish, and seahorses. Many divers like to dive right out front of the beach under the moored sailboats. Out in these areas you'll find sunken rowboats and shopping carts which make great hiding spots for fish and lobsters. Under the big bridge the pillars are teeming with life. Some of the most amazing creatures hang out under the bridge and if you dive right now you'll find tons of octopuses.

Force-E Riviera Dive Shop Info

155 East Blue Heron Blvd

Riviera Beach, FL 33404

(561) 845-2333

riviera@force-e.com

Park Information:



Phil Foster Park

900 E. Blue Heron Blvd.

Riviera Beach, FL 33404

Phone:

General park information: 561-966-6600

Beach conditions information: 561-624-0065

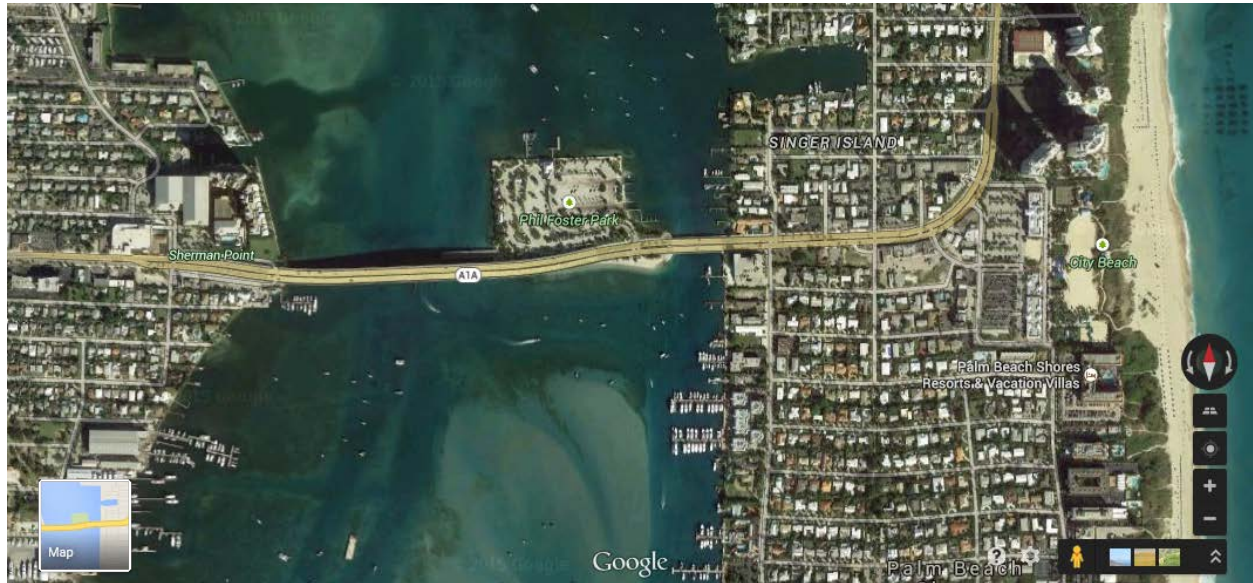
Hours of Operation:

Sunrise to Sunset

Park Entry Fee:

As at September 2012 there is no charge for divers to dive at Blue Heron Bridge or park in the Phil Foster Park.

Satellite Map of the Area:



Emergency Contact Information:

911 - This will activate EMS in the Blue Heron Bridge area

DAN – 1-919-684-4326

Always call **DAN** after 911 in the case of a dive emergency which may require medical attention.

DAN should be called in the case of any diving medical emergency. They will refer you to the correct chamber, if necessary.

Emergency Oxygen should be made available at the dive site by the divers, as there is none on site.

Pre-dive Safety Check:

Divers should gear up at their car, or if they use the beach, put down a towel to keep gear free of sand. Take only the gear needed on the dive down to the ocean, lock all other gear and items in your car. Do not leave valuables out. Perform a pre-dive safety check in the shallow water, to ensure all of your gear is in working order. Also, make sure you go over your buddies gear, and have your buddy go over your gear to make sure you are both familiar with each other's equipment.

Entry and Exit:

Be at water's edge 30 minutes before high tide, geared up and ready to go. Walk into the water, sideways or backwards. Pay very close attention to the current, and when you feel it getting stronger head for the exit.

Amenities available at Blue Heron Bridge:

- Free parking
- No diving fee
- Outdoor fresh water shower available on the south side of the parking area.
- Restrooms on east side of the park.
- This site is also a particularly good night dive (you must check in with the local dive store Force-E for this)

Water temperature and condition:

In the summer the water temperature ranges between 82F and 88F, a rash guard, skin suit or 3mm shorty is fine to wear. Wearing some type of the exposure suit is recommended to protect against scrapes, stings, and sun burn.

In the winter the water temperature ranges between 70F and 75F, a 5mm-7mm full wetsuit or even a dry suit is recommended. Wearing a hood or a hooded vest and gloves (during the winter) also helps to maintain your heat. <http://www.srh.noaa.gov/mfl/>

The water usually has 25-30 feet of visibility in the day time and 20 feet at night.

Some other factors affecting visibility:

- Most of the area has a fine layer of sediment on the bottom, so be careful not to stir it up by swimming too close to the bottom
- Heavy rainwater runoff from land will produce a green water effect.
- Wind driven surge on the ocean will silt the incoming tide, producing a white effect.
- Visibility at low slack tide is less than at high slack tide.

Plan your dive times carefully with the tide in mind.

Get a current weather update before you dive at Blue Heron Bridge, as bad sea conditions can ruin this dive also: [Current weather update for Blue Heron Bridge](#)

Hotel Information:**Holiday Inn Express North Palm Beach - Oceanview**

13950 U.S. Highway 1
Juno Beach, Florida 33408
1-561-622-4366
888-HOLIDAY

<http://www.ihg.com/holidayinnexpress/hotels/us/en/juno-beach/pbiex/hoteldetail>

(Avg price is around \$160 per night / 30,000 points)

Hilton Singer Island Oceanfront/Palm Beaches Resort

3700 North Ocean Drive

Riviera Beach, Florida, 33404

1-561-848-3888

<http://www3.hilton.com/en/hotels/florida/hilton-singer-island-oceanfront-palm-beaches-resort-PBISIH/index.html>

(Avg price is around \$250 per night / 50,000 points)

Super 8 North Palm

757 U.S. Highway 1

North Palm Beach, FL 33408

<http://super8northpalmbeach.com/>

1-561-848-1424

1-800-454-3213

Local Dive Boats:**Narcosis Dive Charters**

Riviera Beach Marina

200 East 13th Street

Riviera Beach, FL 33404

1-561-630-0606 / 1-866-627-2674

<http://www.narcosisdivecharters.com/index.shtml>

- The boat is a spacious Pro 48 and was built specifically for diving. Max capacity is 34 Divers.
- Powered by twin Caterpillar 3126 diesels, Narcosis cruises at a fast 28 knots. Reaching the most popular sites in 30 minutes or less.
- On board amenities include snacks, cold sodas and water, fresh water showers, camera table and camera rinse basin, and weights. For your winter diving comfort those showers are hot and snacks include soups, teas, and hot chocolate.
- They offer both air and nitrox rental tanks (aluminum 80's) at the boat.
- We have an onboard Portable Emergency Marine Oxygen supply. The Captain and all crew members are certified to perform emergency CPR and/or administer oxygen if needed.
- With Narcosis Dive Charters, divers have the option of diving with experienced local divers, or with our crew dive guide, or taking a flag and having their own dive experience. To maximize your bottom time, Nitrox is strongly recommended.

2016 Boat Rates**

	Your Tanks	Our Tanks	Nitrox
2 Tank	\$65	\$85	\$95
3 Tank	\$95	\$125	\$140
1 Tank Night	\$60	\$70	\$75
2 Tank Night	\$70	\$90	\$100

Non diver	\$25	n/a	n/a
-----------	------	-----	-----

2016 Boat Schedule

Monday	Off	
Holiday Monday	10:00 am	
Tuesday	10:00 am	
Wednesday	10:00 am	
Thursday	10:00 am	
Friday	10:00 am	
Saturday-Sunday	8:00 am	1:00 pm
Night Dive	Sunset	

- Check in at least 1/2 hour prior to departure.
- Departure time for night dives varies according to season. Call for time. Bring your own cylumes (Glow Sticks) and lights.
- Prices are for individual divers and include boat passage, weights, sodas and snacks.
**Please be aware that prices are subject to change at any time.
- A 6.5% sales tax is applied to all totals.
- Groups call for special rates.
- For equipment rental we recommend Force-E in Riviera Beach.
- **All divers are expected to have a dive computer and a safety sausage and be knowledgeable in their use.**

