

# South Bay Model Shipwrights

Founded by Jean Eckert 1982

Website: <http://www.sbmodelships.com>



## The Foghorn

February 2020



### Future Course Headings...

- **Friday, February 21, 2020, 7:00 PM:** Many of our members are making progress on their projects judging from the models winding their way to completion as seen last month. So everyone should come by to see the slick work these expert modelers are doing. Jim Rhetta will also have some historical discussion and then talk about possible activities to do when the weather gets warmer.

We will have a pre-meeting dinner at **Chef Chu's** Chinese restaurant starting at 5:30 PM. Please let Ken Lum know at [lum40@comcast.net](mailto:lum40@comcast.net) if you plan to come so appropriate reservations can be made.

- **Saturday, April 18, 2020, 9 AM-5 PM:**

The **International Plastic Modelers Society (IPMS)/Silicon Valley Scale Modelers 7th Annual Silicon Valley Classic** scale modelling convention will be held on this day at **Napredak Hall, 770 Montague Expwy, San Jose, CA**. We have had exhibitions there annually over the last several years in conjunction with **Ages of Sail** and always had great fun. Here are a couple of pictures from the last convention last spring (Fig. 1 and 2).



Fig. 1 Clare Hess at the Ages of Sail table



Fig. 2 Various WW 2 ship models

Our table will need volunteers to staff it all day, and we can set up an informal shift schedule to have at least one person on duty to promote our hobby. **And we promise not to use impressment!** More on this as we get nearer the date.

- **Thurs.-Sat., October 15-17, 2020:**

The **Nautical Research Guild (NRG)** has announced the venue of its annual convention for this year. They are coming back to our turf here in California at the **Channel Islands Maritime Museum** in **Oxnard, CA** (<https://cimmvc.org>) on the coast between Santa Barbara and LA. Excellent choice!

Our late fellow member, Ed Von der Porten and Ken Lum visited there while returning from Encinada, Mexico in 2013 and found numerous very expertly done ship models to enjoy looking at along with a remarkable collection of marine art, some being originals by the Van de Veldes in the 17<sup>th</sup> Century. This one might be worth a **SBMS** caravan to come down together! Here are some photos from our previous visit (Fig. 3 and 4). More details to come.



Fig. 3 Channel Islands  
Maritime Museum



Fig. 4 Model of HMS Mars



## *Maritime Matters of the Month* (Jim Rhetta):

Our website has brought us unexpected new requests for ship model repairs and restorations. Last month Jacob took on a small restoration of rigging for a one-masted ship that may well be over a century old (see last month's newsletter). These projects can give us a higher level of visibility.

- A well-built model of *HMS Beagle* was improperly shipped and suffered the damage shown here. Fig. 5 shows the model before it was damaged. Fig. 6 shows the tragic damage aftermath.

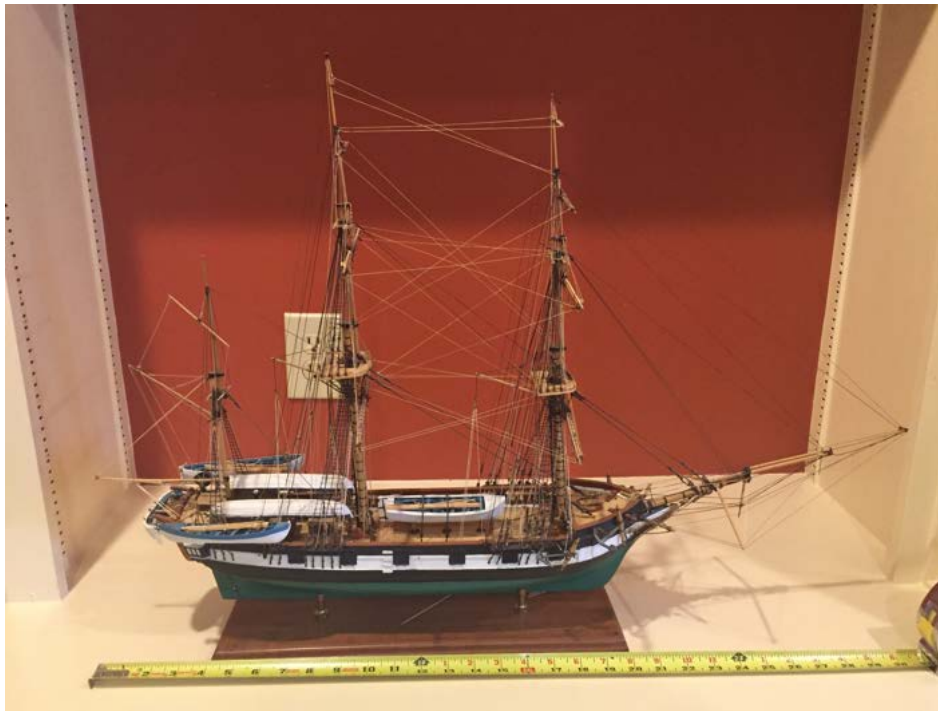


Fig. 5



Fig. 6

It appears that the model was attached to the base only via the keel with a couple of mounting posts. Then during shipping, the keel detached

from the hull and the model rocked around in its case causing most of the top hamper to be destroyed.

Detailed documentation of the **HMS Beagle** can be found in the references below. This model will require the services of a very expert modeler to restore properly, but it will be worth the effort.

The owner has a \$1,000 insurance claim pending to cover the repair. This ship was built by the current owner's father so it has high value to the family. The model is currently in Chico and the owner will transport it here for restoration.

### **References:**

- Darling, Lois, **HMS Beagle, 1820-1870, Sea History**, Spring, 1984
- Thomson, Keith S., **HMS Beagle, The Story of Darwin's Ship**, W.W. Norton 1995
- Marquardt, Karl Heinz, **HMS Beagle, Survey Ship Extraordinary**, The Anatomy of the Ship series, Conway, 1997
- Wikipedia-**HMS Beagle**
- South Bay Model Shipwrights, **Foghorn**, April, 2019.



- A second model of a large steam powered passenger ship is currently in Pasadena and owned by a real estate firm that inherited it from the firm founder. It is still in the storage crate with limited photos available. This model measures 4'4" long and 17" in height (Fig. 7).



Fig. 7

This model is in need of a proper evaluation of its condition. I may be in the Inyo/Kern area in early Apr and may be able to meet with the owners and see the model.

Should anyone want to take on these projects, photos of the process will be most useful.

We will discuss these potential projects in more detail with additional photos at the Feb meeting.



### *Jean Eckert's Ship Models (Ken Lum):*

When Jean Eckert's house was cleaned out for sale last year, she had two ship models in her home that she had built which were up for sale. I regretted that I forgot to take pictures of those models at that time while I cleaned out her workshop.

But while on a recent trip to drop some books off at the Hyde Street Pier Model Shipwrights meeting, I decided to drop by **Frank's Fisherman**, a retail gift store at 366 Jefferson St, San Francisco, CA just a few feet east of the entrance to the San Francisco Maritime Park pier to look around.

And lo and behold, I saw her two ship models on display and for sale in that shop! The proprietor, Ken Brown, let me take a bunch of pictures of the models, so I thought I would share a couple of them with you all. The models were priced around approximately \$2600 each, I believe. I will bring the rest of the pictures to show at our next meeting.



Fig. 8 Yacht *Mary* of 1660 given to King Charles II by the Dutch when he returned to England to regain the Crown in 1660. Model by Jean Eckert.



Fig. 9 Ketch ***Nonsuch***, 1668. First ship of the Hudson's Bay Company. A full size replica was built in 1970 to celebrate the tercentenary of the founding of the Hudson's Bay Company. The replica is now on display at the Manitoba Museum in Winnipeg, Canada. Model by Jean Eckert.

Best as I know, Jean also built a fine model of the ***Dapper Tom*** Baltimore clipper from a Model Shipways kit which was sold a long time ago, and a cross sectional kit of the ***HMS Victory***. I plan to ask her if she had built any other ship models when I can.

Should these models still be at Frank's Fisherman, by all means drop by and take a look at them for their exquisite craftsmanship. They also have other excellent models on display for sale.





## *Under Construction at the Model Shipyard*



Fig. 10 Bomb Ketch, *La Candelaria*  
OcCre model



Fig. 11 *Papagojen* stern  
decorations by George Sloup



1/700 completed *USS Terror*  
by Jim Tottorici  
Jim's uncle served aboard her  
In WW 2



1/700 *Mikasa* by Jacob Cohn





**Clare Hess** brought in a pair of 1/10-scale models he's building of a *Honryou-sen*, a one-person Japanese river fishing boat from **Niigata prefecture**. The models are based on a full-sized one built this past Fall by **Douglas Brooks** and **Mr. Nakaichi Nakagawa**. (photo Ken Lum, text Clare Hess)



## *Ship Model Clubs in the Bay Area*

Astonishingly enough, there are no less than 5 ship model clubs in the Bay Area stretching from Los Altos in the South Bay to Rohnert Park in the north. Here is the list of them for those who would like to travel around and sample their offerings. List is courtesy of Clare Hess.

•**South Bay Model Shipwrights** – contact **Jim Rhetta**, [jmrhetta@aol.com](mailto:jmrhetta@aol.com). Meets at 7:30pm on the 3rd Friday (check the website for the schedule as it sometimes has to be on a different Friday) of every month at the **Los Altos Public Library** at 13 S. San Antonio Rd., Los Altos. Website is: <http://www.sbmodelships.com>

•**Hyde Street Pier Model Shipwrights** – contact **Leo Kane**, [kanebulota@comcast.net](mailto:kanebulota@comcast.net). Meets 9:30am on the 3rd Saturday of every month aboard the Ferry Boat *Eureka* in the **San Francisco Maritime National Historic Park**. Website is: <http://hspms.wordpress.com>

•**San Francisco Model Yacht Club** – contact **Colleen Stobbe**, [commodore@sfmvc.org](mailto:commodore@sfmvc.org). Meets at 11am on the second Saturdays of most months at the **Spreckles Lake Boat House in Golden Gate Park**. Emphasis is on radio control models of all kinds. The club holds frequent sailing regattas on Spreckles Lake. Check their calendar for the schedule

of events. This is the oldest of such clubs in the Bay Area having been founded in 1898. Website is: <https://www.sfmvc.org/index.php>

•**Red Oak Victory Model Shipwrights** Meets at 10:00 am on the second Saturday of every month in the Petty Officers Mess aboard the **Red Oak Victory at Pt. Richmond, 1337 Canal Blvd, Richmond, CA 94804**

•**Redwood Empire Model Shipwrights** – contact **Randy Smith, redoakboat@aol.com**. Meets at 10:00 am on the first Saturday at the **Fundemonium** store in Rohnert Park. The address and telephone is:

**579 Rohnert Park Expy W Expressway Center  
Rohnert Park, CA 94928  
(707) 800-4060**



## *Buyers and Sellers of Ship Models*

The fate of Jean Eckert's ship models prompted me to look into places where ship models are bought and sold. So here is a tentative list of these places.

•**Frank's Fisherman**

366 Jefferson St,  
San Francisco, CA.  
Telephone: (415) 775-1165  
Website: <https://www.franksfisherman.com>  
Proprietor: Ken Brown

•**American Marine Model Gallery**

PO BOX 6102  
GLOUCESTER, MA, 01930  
Telephone: (978) 281-1166  
Website: <https://www.shipmodel.com/contact/>  
Proprietor: R. Michael Wall

•**Fiddlers Green Model Ships**

7372 Tonga Ct.  
Boynton Beach, FL 33437  
Telephone: (561) 877-4605  
Website: <http://fiddlersgreenmodelships.com>



## Bay Area Hobby Shops

Here is a list of Peninsula, East Bay, and South Bay hobby shops with supplies relevant to ship modelers. There are other area hobby shops listed on the web, but they are not relevant to ship modelers. **Sadly, Talbot's Toyland in San Mateo has closed after 66 years, evidently a victim of competition from online retailers.**

<p><b>Ages of Sail</b> 676 Bockman Road , Unit B &amp; C San Lorenzo, CA 94580 Phone:(510) 889-6000 Website: <a href="https://www.agesofsail.com">https://www.agesofsail.com</a> Primarily wooden and resin ship kits. Outstanding resource for this area. <b><u>SBMS members are eligible for a 10% discount on all purchases.</u></b></p>	<p><b>Hobbies Unlimited</b> 937 Manor Blvd. San Leandro, CA 94579 Phone: (510)351-7112 Website: <a href="http://www.hobbiesunlimited.net">http://www.hobbiesunlimited.net</a> Outstanding selection of plastic steel navy kits. Great complement to <b>Ages of Sail</b> which is only a short distance away.</p>
<p><b>The Hobby Co. of San Francisco</b> 5150 Geary Blvd. San Francisco, CA 94118 Phone: (415) 386-2802 Website: <a href="http://www.hobbycosf.com">http://www.hobbycosf.com</a></p>	<p><b>Sheldon's Hobby Shop</b> 2130 Trade Zone Blvd. San Jose, CA 95131 Phone: (408) 946-3801 Website: <a href="https://sheldons hobbies.com">https://sheldons hobbies.com</a></p>
<p><b>Talbot's Toyland in San Mateo is now closed.</b></p>	<p><b>Michaels</b> Website: <a href="https://www.michaels.com">https://www.michaels.com</a> A chain of general crafts stores with many branches throughout the Bay Area. Great source for scale wood, paints, and tools.</p>
<p><b>J &amp; M Hobby House</b> 1660 Laurel St. San Carlos, CA 94070 Phone: (650) 593-5019 Cute little hobby shop with a good selection of tools, wood, paints, and a comprehensive selection of Model Shipways kits and fittings.</p>	





## *Club Ship Model Fittings Library*

The club now has a substantial slop chest library of kit fittings acquired from the estates of members and other ship model builders who have passed away or retired due to disability.



It is all now in the possession of **Jim Rhetta** ([jmrhetta@aol.com](mailto:jmrhetta@aol.com)) and is available to members in need of fittings for their projects.

This library will be brought to meetings for us to pick over. They include a variety of blocks, deadeyes, pins, chains, belaying pins, rudder hinges, rings, guns in various sizes and more. We sincerely thank all those who have contributed to this library.



## *Traveling this Year?*

Add these museums to your travel plans either locally or elsewhere if you can.

### *Bay Area:*

- San Francisco Maritime National Historic Park: <http://www.nps.gov/safr/index.htm>
- San Mateo County History Museum (home of Charlie Parsons exhibit, Redwood City): <http://historysmc.org>
- Vallejo Naval and Historical Museum: <http://www.vallejomuseum.org>
- Mare Island Museum (Vallejo): <http://www.mareislandmuseum.org>
- SS *Jeremiah O'Brien* (San Francisco): <http://www.ssjeremiahobrien.org>
- USS *Pampanito* (San Francisco): <https://maritime.org/uss-pampanito/>
- SS *Red Oak Victory* (Richmond): <http://richmondmuseum.org/ss-red-oak-victory/>
- USS *Hornet* (Alameda): <https://www.uss-hornet.org> -By far the largest museum ship on the Bay
- USS *Potomac* FDR Presidential Yacht (Oakland): <https://www.usspotomac.org>

## *Elsewhere in US:*

- Channel Islands Maritime Museum (Oxnard, CA): [www.cimmvc.org](http://www.cimmvc.org)
- Los Angeles Maritime Museum: <http://www.lamaritimemuseum.org>
- San Diego Maritime Museum: <http://sdmaritime.org/>
- SS Lane Victory (San Pedro, CA): [www.lanevictory.org/](http://www.lanevictory.org/)
- USS Texas (LaPorte, TX):  
<http://tpwd.texas.gov/state-parks/battleship-texas>
- USS Alabama (Mobile, AL): [www.ussalabama.com/](http://www.ussalabama.com/)
- USS Constitution (Boston, MA): [www.usconstitutionmuseum.org/](http://www.usconstitutionmuseum.org/)
- USS Constellation (Baltimore, MD): [www.historicships.org/constellation.html](http://www.historicships.org/constellation.html)
- The Hart Nautical Gallery, MIT, 77 Mass. Ave., Cambridge, MA  
<https://mitmuseum.mit.edu/installation-or-collaboration/hart-nautical-gallery>
- New Bedford Whaling Museum (New Bedford, MA):  
<https://www.whalingmuseum.org>
- South Street Seaport (New York, NY): <https://southstreetseaportmuseum.org>
- National Museum of American History (Smithsonian, Washington, D.C.):  
<https://www.si.edu/museums/american-history-museum>
- National Museum of the U.S. Navy (Washington, D.C.):  
<https://www.history.navy.mil>
- US Naval Academy (Annapolis, MD):  
<https://www.usna.edu/Museum/index.php>
- Mariners Museum of VA (Newport News, VA): [www.marinersmuseum.org/](http://www.marinersmuseum.org/)
- Steamboat *Bertrand* (DeSoto National Wildlife Refuge, Missouri Valley, IA):  
[http://www.fws.gov/refuge/Desoto/wildlife\\_and\\_habitat/steamboat\\_bertrand.html](http://www.fws.gov/refuge/Desoto/wildlife_and_habitat/steamboat_bertrand.html)

## *Outside US:*

- Vancouver Maritime Museum (Vancouver, BC, Canada):  
<https://www.vancouvermaritimemuseum.com>
- Royal Museums Greenwich (Greenwich, UK. Includes National Maritime Museum): <https://collections.rmg.co.uk>
- Portsmouth Historic Dockyard | Royal Navy Museum (Portsmouth, UK):  
<https://www.historicdockyard.co.uk/index.php>
- Titanic Belfast (Belfast, N. Ireland): <https://titanicbelfast.com>
- National Maritime Museum in Amsterdam (Netherlands):  
<https://www.hetscheepvaartmuseum.com>
- Maritime Museum in Rotterdam (Netherlands):  
<https://www.maritiemmuseum.nl/en>
- Musée national de la Marine (National Navy Museum) (Paris, France):  
[https://web.archive.org/web/20130101102816/http://www.musee-marine.fr/version\\_uk.html](https://web.archive.org/web/20130101102816/http://www.musee-marine.fr/version_uk.html)
- Deutsches Schiffahrtsmuseum (Bremerhaven, Germany):  
<https://www.dsm.museum>



## *SBMS Club Officers*

<b>President</b>	<b>Jim Rhetta</b>	email: <a href="mailto:jmrhetta@aol.com">jmrhetta@aol.com</a>
<b>Vice President And Newsletter Editor</b>	<b>Ken Lum</b>	email: <a href="mailto:lum40@comcast.net">lum40@comcast.net</a>
<b>Treasurer</b>	<b>Jacob Cohn</b>	email: <a href="mailto:jcohnster@gmail.com">jcohnster@gmail.com</a>
<b>Harbor Master</b>	<b>George Sloup</b>	email: <a href="mailto:george.p.sloup@outlook.com">george.p.sloup@outlook.com</a>
<b>Webmaster</b>	<b>Jim Tortorici</b>	email: <a href="mailto:oday20@earthlink.net">oday20@earthlink.net</a>



## *2020 Meeting Dates*

**Third Friday of each month.** Please note changes in the meeting schedule each month. The club does its best to schedule the 3<sup>rd</sup> Friday, but library priorities and competition for the conference room may require meeting dates to be rescheduled!!!

**Los Altos Public Library  
13 S. San Antonio Road  
Los Altos at 7:00pm**

**February 21, 2020**

**May 15, 2020**

**\*March 13, 2020**

**\* April 10, 2020**

These dates are confirmed by the Los Altos Library.

\* Indicates date change





## **2020 Annual Club Membership**

Send in your 2020 Club Membership with attached renewal form! Submit a \$20 check made out to South Bay Model Shipwrights and mail to Jacob Cohn, 726 7<sup>th</sup> Ave, Redwood City, CA 94063. Welcome Aboard!

### **2020 Membership Form**

Make check out for annual membership of \$20.00 to South Bay Model Shipwrights and mail to Jacob Cohn, 726 7<sup>th</sup> Ave, Redwood City, CA 94063

Print your name \_\_\_\_\_ Phone# \_\_\_\_\_



Address

\_\_\_\_\_

Receive our Foghorn newsletter by email? Yes \_\_ No\_\_

Email address \_\_\_\_\_

To order a club name badge, add \$15.00 to your check and print your name exactly as it should appear on the badge