

South Bay Model Shipwrights

Founded by Jean Eckert 1982

Website: <http://www.sbmodelships.com>



The Foghorn

March 2020



Future Course Headings...

- **Friday, March 13, 2020, 7:00 PM-Cancelled:**

Due to precautions regarding the risk of infection by the **Coronavirus** or **COVID-19**, the **Los Altos Public Library** has cancelled all public meetings at the library this month, including our meeting. What that means, of course, is that we stay home and get modeling!

The great news this month is that due to last month's article on the whereabouts of **Jean Eckert's** ship models, SBMS member, **Walt Hlavacek**, actually went to **Frank's Fisherman** gift store in San Francisco and purchased both her models of the **HMY Mary** and the **Nonsuch!**



Fig. 1 and 2. Jean Eckert's model of **HMY Mary** now in Walt Hlavacek's home

I hope I can convince Walt to bring one of these models at a time to our next few meetings for all of us to more closely inspect and admire these exquisite models when we are allowed to resume normal activities.

Hope to see you all at the **April 10** meeting and maybe the **IPMS convention** in San Jose **April 18** (See below).

- **Now to March 22, 2020:**

This has been at **The Asian Art Museum** at **200 Larkin St., San Francisco** since **November 26, 2019** and will be on exhibition until **March 22, 2020**. **“LOST AT SEA: Art Recovered from Shipwrecks”** is a display of artistic artifacts from two shipwrecks that originated in Vietnam.

One is from a trading vessel that sank in the 15th century off Vietnam’s **Hoi An** coast with a cargo of more than 250,000 ceramic objects made for export.



Fig. 3. **Cham Culture** Vietnamese sculpture (Asian Art Museum, SF)

The other is from a French steamer that sank off the coast of Somalia in 1877 loaded with sculptures from a ruined temple of the **Cham Culture** (Fig. 3) of central Vietnam which thrived from the 5th to 15th Century AD. More on this exhibition at:

<http://www.asianart.org/exhibitions/lost-at-sea>

And so, get up there soon when public health authorities say it is safe as this exhibition is scheduled to be leaving shortly!

- **Saturday, April 18, 2020, 9 AM-5 PM:**

The **International Plastic Modelers Society (IPMS)/Silicon Valley Scale Modelers 7th Annual Silicon Valley Classic** scale modelling convention will be held on this day at **Napredak Hall, 770 Montague Expwy, San Jose, CA**. We have had exhibitions there annually over the last several years in conjunction with **Ages of Sail** and always had great fun. Here are a couple of pictures from the last convention last spring (Fig. 4 and 5).



Fig. 4. Clare Hess at the **Ages of Sail** table



Fig. 5 Various WW 2 ship models on display

Our table will need volunteers to staff it all day, and we can set up an informal shift schedule to have at least one person on duty to promote our hobby. **And we promise not to use impressment!** More on this as we get nearer the date.

- **Thurs.-Sat., October 15-17, 2020:**

The **Nautical Research Guild (NRG)** has announced the venue of its annual convention for this year. They are coming back to our turf here in California at the **Channel Islands Maritime Museum** in **Oxnard, CA** (<https://cimmvc.org>) on the coast between Santa Barbara and LA. Excellent choice!

Our late fellow member, Ed Von der Porten and Ken Lum visited there while returning from Encinada, Mexico in 2013 and found numerous very expertly done ship models to enjoy looking at along with a remarkable collection of marine art, some being originals by the Van de Veldes in the 17th Century. This one might be worth a **SBMS** caravan to come down together! Here are some photos from our previous visit (Fig. 6 and 7). More details to come.



Fig. 6 **Channel Islands Maritime Museum**



Fig. 7 Model of **HMS Mars**



Maritime Matters of the Month

- **Restoration of a Vintage Model Ship (Jacob Cohn):**

Peter Hurd of San Jose contacted the club to see about restoring a family heirloom model sloop. The model appears to be from the early 20th century and needed some rigging and other minor repairs.



Fig. 8



Fig. 9

The above photos (Fig. 8 and 9) shows the condition of the model as it came. My approach was to repair what seemed necessary while attempting to maintain the aesthetic integrity of the original model.

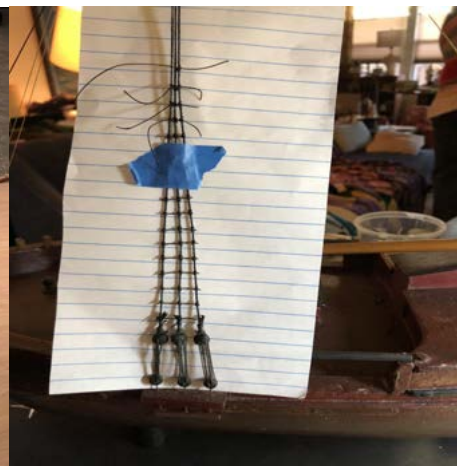


Fig. 10 and 11. Replaced deck hatches and new shrouds and ratlines. The ratlines were clove hitched and reinforced with Varathane.



Fig.12 New anchors were made.



Fig. 13. The Happy Owner

- **Exploring the Microbial Ecology of Shipwrecks (Ken Lum):** With the COVID-19 making this to be **Microorganism Month**, this Feb. 21, 2020 **New York Times** story by **Katherine Kornei** about some marine microbial ecologists exploring the biological diversity of a shipwreck in the Gulf of Mexico seems relevant. The ship involved is the former luxury yacht, **Anona** (Fig. 14), which was built in 1904 for Elizabeth DeLong Buhl, the wife of wealthy Detroit industrialist, Theodore DeLong Buhl by the shipyard of George Lawley & Sons in Boston.

Historical Collections of the Great Lakes
Bowling Green State University

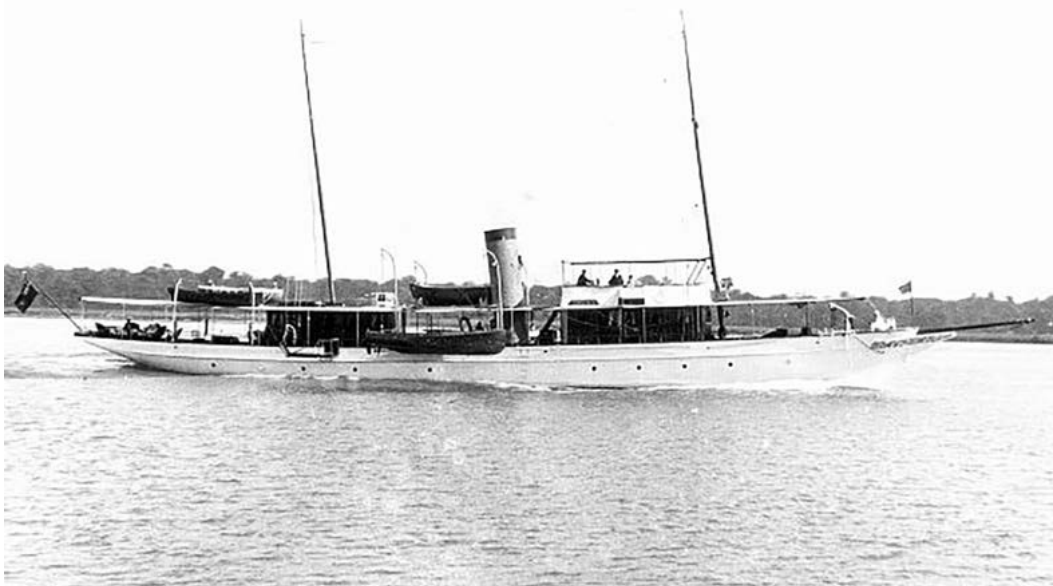


Fig. 14. Yacht **Anona** in its heyday (Bowling Green State U.)

After an uneventful career she passed through several owners eventually becoming a cargo carrier under the ownership of the **Pan-American Banana Producers Association** of Montreal in 1943. But she sank in about 4000 ft. of water in the Gulf in 1944 when some hull plates under the engine buckled while carrying a load of potatoes. The crew of 9 was rescued after being adrift for 2 days. The wreck was rediscovered in 2002 by BP Exploration, Inc.

In 2018, marine microbial ecologist, **Dr. Leila Hamdan** of the **University of Southern Mississippi** and a team of scientists and students explored the **Anona** wreck via a remotely operated vehicle (ROV) collecting sea floor samples at varying distances from the wreck. By extracting and sequencing the DNA from these samples, the team was able to determine what types of microorganisms lived near the shipwreck.

They found the greatest biodiversity of microorganisms at a distance of 160 to 330 ft. away from the wreck. They also collected samples around two other older shipwrecks of wooden ships. These revealed the presence of microorganisms which could degrade the cellulose in wood.

They conclude that shipwrecks provide nutritional resources to the microbiome of the sea floor that spread out from the wreck creating a unique biological ecology around each wreck. These microorganisms also coat the surfaces of the wrecks as a biofilm providing a nutritional foundation for the habitation of larger organisms such as anemones and fish that come after as a process of ecological succession.

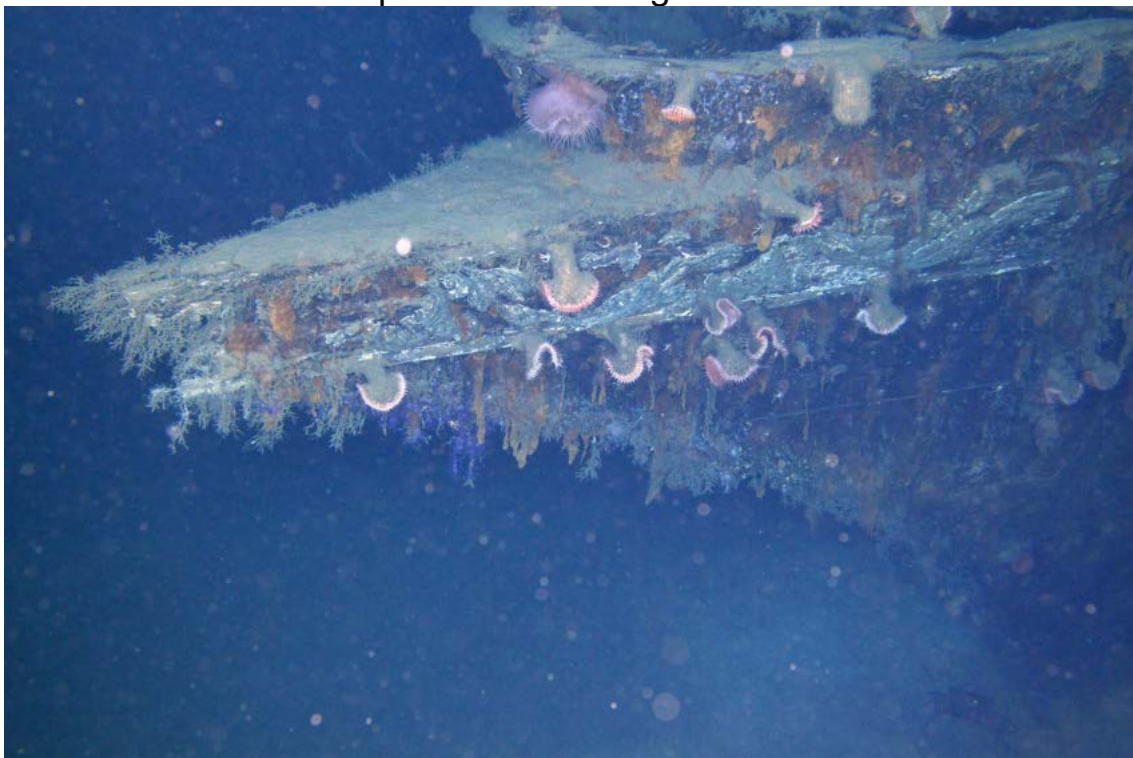


Fig. 15 Marine organisms colonizing the bow of the **Anona** (Deep Sea Systems International's Global Explorer ROV and the Bureau of Ocean Energy Management)



Under Construction at the Model Shipyard

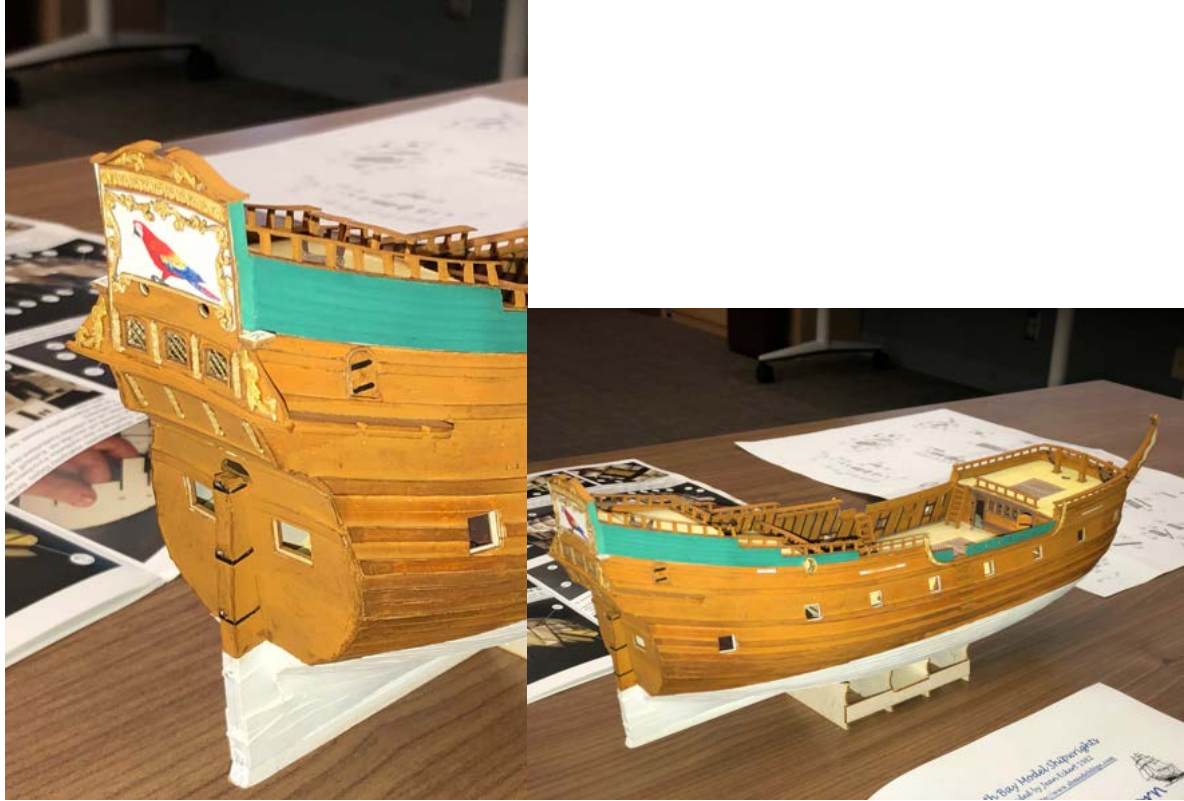


Fig. 16 and 17. George Sloup's *Papegojan* model with its stern decorations.



Fig. 18. Amati's Venetian *Polacca* model by Jacob Cohn.



Fig. 19 and 20. Display case being built by Walt Hlavacek



Fig. 21. *Flying Cloud* clipper model brought in by Robert Miguel for repair.



SBMS Resource Guide

For the past year or so, I have listed many resources in the back of this newsletter that would be useful to ship modelers such as other local ship model clubs, local hobby shops, museums, etc. However, this listing is getting to be very large and making the newsletter quite bulky. And so I have decided to off-load this content to a separate guide that will be updated periodically as I receive new information. It will be sent out with the newsletter as a separate item by email and posted on our website for download. This guide will include:

- 1) Some Thoughts on Beginning Ship Modeling
- 2) Ship Model Clubs in the Bay Area
- 3) Bay Area Hobby Shops
- 4) Club Ship Model Fittings Library
- 5) Repair of Ship Models
- 6) Buyers and Sellers of Ship Models
- 7) Travel Guide Listing of Maritime Museums

I am sure this guide will be very useful to our members. I hope to have it out in the next week or so.



SBMS Club Officers

President	Jim Rhetta	email: jmrhetta@aol.com
Vice President And Newsletter Editor	Ken Lum	email: lum40@comcast.net
Treasurer	Jacob Cohn	email: jcohnster@gmail.com
Harbor Master	George Sloup	email: george.p.sloup@outlook.com
Webmaster	Jim Tortorici	email: oday20@earthlink.net



2020 Meeting Dates

Our meetings are usually held on the **Third Friday of each month**. Please note changes in the meeting schedule each month. The club does its best to schedule the 3rd Friday, but library priorities and competition for the conference room may require meeting dates to be rescheduled.

Los Altos Public Library
13 S. San Antonio Road
Los Altos at 7:00pm

***March 13, 2020-Cancelled**

*** April 10, 2020**

May 15, 2020

These dates are confirmed by the Los Altos Library. * Indicates date change



2020 Annual Club Membership

Send in your 2020 Club Membership with attached renewal form! Submit a \$20 check made out to South Bay Model Shipwrights and mail to Jacob Cohn, 726 7th Ave, Redwood City, CA 94063. Welcome Aboard!

2020 Membership Form

Make check out for annual membership of \$20.00 to South Bay Model Shipwrights and mail to Jacob Cohn, 726 7th Ave, Redwood City, CA 94063

Print your name _____ Phone# _____

Address



Receive our Foghorn newsletter by email? Yes __ No__

Email address _____

To order a club name badge, add \$15.00 to your check and print your name exactly as it should appear on the badge

