

South Bay Model Shipwrights

Founded by Jean Eckert 1982

Website : <http://www.sbmodelships.com>



Jean Eckert
1935-2020



The Foghorn

September 2020

It is with heavy heart that I announce the passing of **Jean Eckert**, our founder and guiding light for many years. Jean passed away at the **Sunny View Retirement Community** facility in Cupertino, August 30. Burial services were held at the **Gates of Heaven Cemetery** in Los Altos, September 3. SBMS members **Walt Hlavacek** and **Ken Lum** attended the services along with numerous friends and relatives.

She always had an interest in nautical topics and began building some ship model kits becoming ever more skilled. Jean founded the **South Bay Model Shipwrights** in 1982 to promote the hobby of ship model building and related topics of maritime history and naval architecture. In its first years, the group expanded considerably to several dozen members producing numerous ship models which were often put on public display in a number of local venues. She ran our meetings with great enthusiasm for our accomplishments and empathy for our challenges.

Jean Ann Kirchner was born in 1935 in Huntington, NY. She met her husband, Richard Eckert, while in high school, and they were married in 1957. They moved around the country first with the Navy, and then with United Airlines where Richard was a pilot. They settled in Los Altos in 1970 and adopted two sons.

In 1991, she entered her model of the **Dutch Yacht, *Mary***, of 1660 (Fig. 2) in a contest at the **Mariiner's Museum** in Newport News, VA, being the first woman ever to do so. She received a Bronze Medal for that entry. By 2000, she had entered her extraordinary model of the ***Nonsuch*** (Fig. 3) and was awarded a Gold!



Fig. 2. Yacht *Mary* of 1660



Fig. 3. Exploration ketch, *Nonsuch* of 1650.

These two models were purchased by SBMS member Walt Hlavacek earlier this year when we published an article in the **Foghorn** about their whereabouts. She also built outstanding kit models of the Baltimore clipper, ***Dapper Tom***, and a midship cross section of ***HMS Victory*** which are also in private collections. Jean published several articles in the **Nautical Research Journal** and **Ships in Scale** magazine as well.

Her later years were marked with much emotional and physical anguish when her sons and husband predeceased her, and she broke a hip which did not heal leaving her totally disabled. We held a couple of SBMS club meetings at the Sunny View Retirement Community and sent copies of the **Foghorn** to help her keep informed. Some member visits also punctuated her time at Sunny View to let her know she was well remembered.

The **South Bay Model Shipwrights** continues as her legacy to the community giving joy and friendship to its members and amazement to all who have had a chance to admire these incredible works of art. May the club continue for many years to come! **Fair winds and a following sea, Jean, and thank you for all the great years!**



Future Course Headings...

- **Future meetings: In-person meetings still cancelled until further notice.** We are holding Zoom meetings instead with the next one this **Wednesday, September 16, 7 PM.** The link is:

<https://zoom.us/join> with

Meeting ID 507 543 0518

Pass Code Afsa7a

Jim Tortorici will give a presentation about a type of early astronomical and navigational instrument known as an **Astrolabe**(**Fig. 4**).



Fig. 4. Persian Planispheric Astrolabe (circ. 1864) (Smithsonian)

Show and Tell of your projects can be done via pictures posted on a **Power Point** presentation or simply shown with closeups using your webcam.

- **All local museums are closed until further notice due to the coronavirus outbreak.**

- **September 26, 2020 International Plastic Modelers Society (IPMS)/Silicon Valley Classic is cancelled.**

I knew this was likely to be cancelled if the coronavirus pandemic was still out of control by the end of August. It has been rescheduled for March 20, 2021.



Maritime Matters of the Month

- **Finnish Divers discover nearly intact 17th Century Dutch Fluyt in the Gulf of Finland (Jim Rhetta).**

Divers from the Finnish diving organization, **Badewanne**, have discovered a nearly intact wreck of a 17th Century **Dutch fluyt** (Fig. 5, 6, and 7) at a depth of about 280 ft. in the **Gulf of Finland** between Finland and Estonia. The conditions of low salinity, low temperature and low light have enabled exceptional preservation of the wooden wreck, and prevented ship worms from destroying the wood. Only slight damage was found due to trawler nets.



Fig. 5. Round stern on port side. (Badewanne.fi)



Fig. 6. Windlass seen from the starboard bow quarter.(Badewanne.fi)

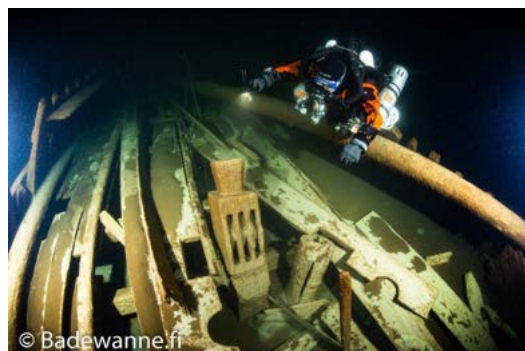


Fig. 7. Remarkably well-preserved timberhead bitt with sheaves. (Badewanne.fi)

The ship was unarmed and may have sunk in a storm, but what really happened to it is unknown. Thus far only two dives into the wreck have been conducted, enough to show that the hold seemed to be full of unknown cargo. Underwater archeologist, **Niklas Erikso**, from Stockholm University, confirmed that it appeared to be a Dutch fluyt with three masts.

Fluyts (Fig. 8) were built with only cargo carrying trade in mind and were not convertible to warships. Thus, they were cheaper to build and required fewer crew to operate. It was the commercial activities of these ships that provided the economic basis of the **Dutch Golden Age** in the 17th Century.



Fig. 8. **Dutch Fluyt** model at the New Bedford Whaling Museum portrayed here as an early whaling ship.

Further dives are planned to explore the wreck and perhaps bring up some artifacts. This may turn out to be the best preserved 17th Century ship since the **Vasa** of 1628 was raised in 1961.

Perhaps the best reference on these kinds of ships is:

Hoving, Ab and Emke, Cor, **17th Century Dutch Merchant Ships**, Sea Watch Books (<https://www.seawatchbooks.com>), 2014.

This book would also be an excellent companion to any of the **Kolderstok** kit models of Dutch 17th Century ships reviewed last month.



Kits News (Ken Lum):

Model Shipways has introduced two new kits for beginners designed by the famed Canadian ship modeler, **David Antscherl**. One is of a **Lowell Grand Banks fishing dory** (Fig. 9 and 10) at 1/24 scale selling for \$34.99.



Fig. 9. Completed **Lowell Grand Banks fishing dory** (Model Shipways)



Fig.10. **Lowell Grand Banks fishing dory** out of the box (Model Shipways)

The other model is of a **Norwegian Sailing Pram** (Fig. 11) at 1/12 scale offered at \$64.99.



Fig. 11. **Norwegian Sailing Pram** (Model Shipways)

These kits are part of a new series of progressive model tutorials designed to help beginners get started. These models can be obtained from **Model Expo** and possibly **J & M Hobby House** in San Carlos ((650) 593-5019). I did not find them in **Ages of Sail's** inventory, however. These look like great Christmas or birthday gifts for any budding model maker!



Under Construction at the Model Shipyard

• **Walt Hlavacek** has completed a display case (Fig. 13) for a ***Flying Cloud*** model brought in during the spring for repair by Robert Miguel (Fig. 12).



Fig. 12. Robert Miguel's ***Flying Cloud*** model now repaired



Fig. 13. Walt Hlavacek's finished display case for the ***Flying Cloud*** model

• **Jacob Cohn** is now almost finished with his 1/700 scale model of the Imperial Japanese pre-dreadnought battleship, ***Mikasa*** (Fig. 14). Only the rigging in the masts remain to be done. Marvelous detail and outstandingly realistic ocean surface!

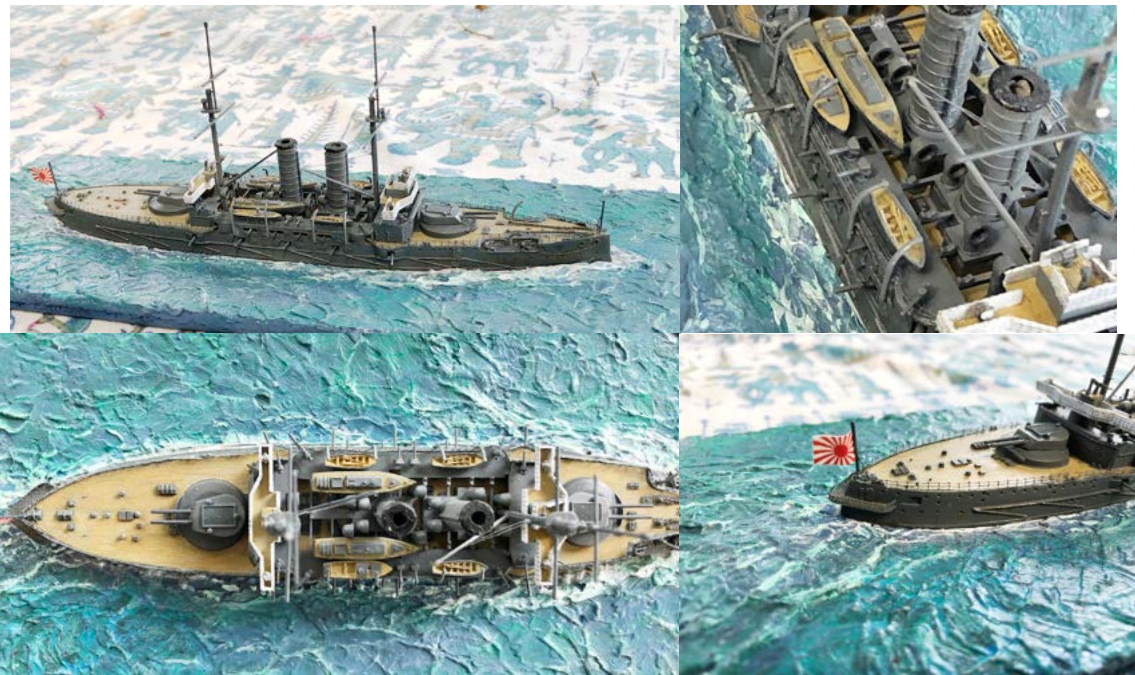


Fig. 14a-d. Current state of Jacob Cohn's 1/700 model of the Imperial Japanese pre-dreadnought, ***Mikasa***.

•**Ken Lum** is nearly finishing up his **British carronade** model (Fig. 15a-b). The scratch-built gunnel platform is made from maple, basswood, walnut and Macassar ebony. The **Mantua** kit gun barrel and some deck fittings were used. The diorama portrays the location of a 32 lb. carronade on a quarter deck location where carronades were frequently used. Contemporary Admiralty ship models often show these gun ports to be without lids so I did not install one.



Fig. 15a-b. Ken Lum's nearly completed **Mantua** kit of an **English carronade**. Only the deck fittings and maneuvering ropes need to be installed.



SBMS Club Officers

President	Jim Rhetta	email: jmrhetta@aol.com
Vice President And Newsletter Editor	Ken Lum	email: lum40@comcast.net
Treasurer	Jacob Cohn	email: jcohnster@gmail.com
Harbor Master	George Sloup	email: george.p.sloup@outlook.com
Webmaster	Jim Tortorici	email: oday20@earthlink.net



2020 Meeting Dates: All in-person club meetings are cancelled by the Los Altos Public Library until further notice. Instead, we are conducting Zoom meetings as an alternative. The links for the September 16 meeting are above. Stay tuned for further news.



2020 Annual Club Membership

Send in your 2020 Club Membership with attached renewal form! Submit a \$20 check made out to South Bay Model Shipwrights and mail to Jacob Cohn, 726 7th Ave, Redwood City, CA 94063. Welcome Aboard!

2020 Membership Form

Make check out for annual membership of \$20.00 to South Bay Model Shipwrights and mail to Jacob Cohn, 726 7th Ave, Redwood City, CA 94063

Print your name _____ Phone# _____



Address

Receive our Foghorn newsletter by email? Yes __ No__

Email address _____

To order a club name badge, add \$15.00 to your check and print your name exactly as it should appear on the badge

