

South Bay Model Shipwrights

Founded by Jean Eckert 1982

Website : <http://www.sbmodelships.com>

The Foghorn

October 2020

**Shiver me Timbers!!!
Happy Halloween!**



(He looks like a victim of climate change!)





Future Course Headings...

- **Future meetings: In-person meetings still cancelled until further notice.** However, we have been having really great Zoom meetings sometimes drawing more attendees than our original in-person meetings! Our last meeting had a show and tell including Jim Tortorici's restoration of a century old runabout model as well as progress on Ken Lum's **carronade** model. Wonderful work on Jacob Cohn's **Mikasa** and George Sloup's **Papegojan** paper model.

Prior to that, we had an excellent talk by **Jim Tortorici** on **astrolabes**. More on that below. Also attending were three members of the **Northern California Historical Astronomy Lunch and Discussion Association (NCHALADA)**, a group interested in the history of astronomy.

We had a great Zoom meeting **Wed. October 21** where we had a talk from Ken Lum on determining latitude and longitude at sea and from Jim Rhetta on radio positioning, particularly as it was applied in WW 2. A YouTube video of **John Harrison's** first marine chronometers, **H-1**, **H-2**, and **H-3** used for finding longitude was shown as they are now at the old **Royal Greenwich Observatory, U.K.** still working even almost 300 years after they were made and a century after they were restored (Fig. 1)!

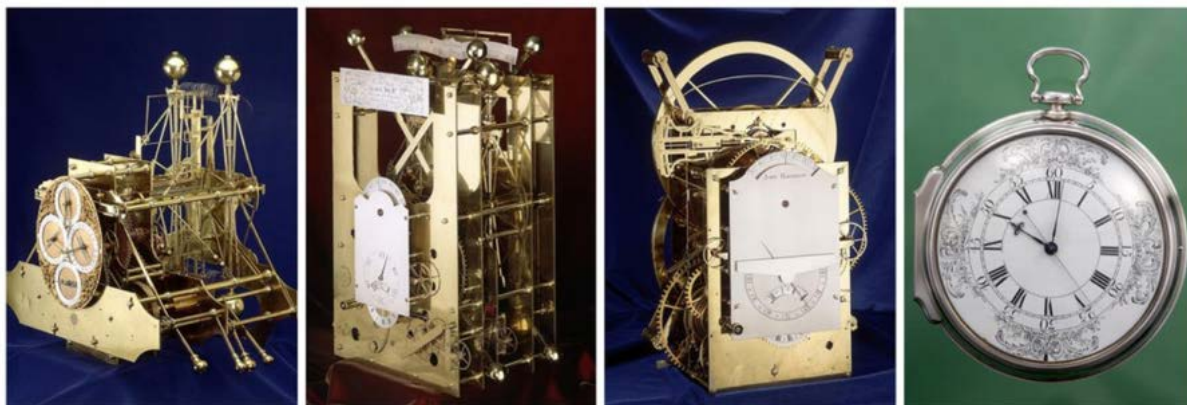


Fig. 1. **John Harrison's** marine chronometers (left to right) **H-1**, **H-2**, **H-3**, and **H-4**, built between 1730-1759 and restored to working order in the 1920s.

A great account of these clocks, including other early chronometers, can be found in the short best-selling book, **Longitude** by author, **Dava Sobel**.

- All local museums are closed until further notice due to the coronavirus outbreak.

- March 20, 2021 International Plastic Modelers Society (IPMS)/Silicon Valley Classic. This annual convention has been cancelled for this year and has been rescheduled for next March. We'll see what happens.

- October, 2021. Nautical Research Guild Annual Convention, Oxnard, CA. The cancelled 2020 NRG convention has been rescheduled for October of 2021 at the **Channel Islands Maritime Museum** in Oxnard, CA.



Maritime Matters of the Month

- **Astrolabe supplement by Ken Lum:** As mentioned above, **Jim Tortorici** gave a very fine discussion about how the astronomical instrument, the **Astrolabe**, was used in nautical navigation. Without getting into those details, I just wanted to mention that a paper model of an astrolabe is available on the internet at:

<https://in-the-sky.org/astrolabe/index.php>

for download and assembly by those who want to get into the details of how they worked (Fig. 2).

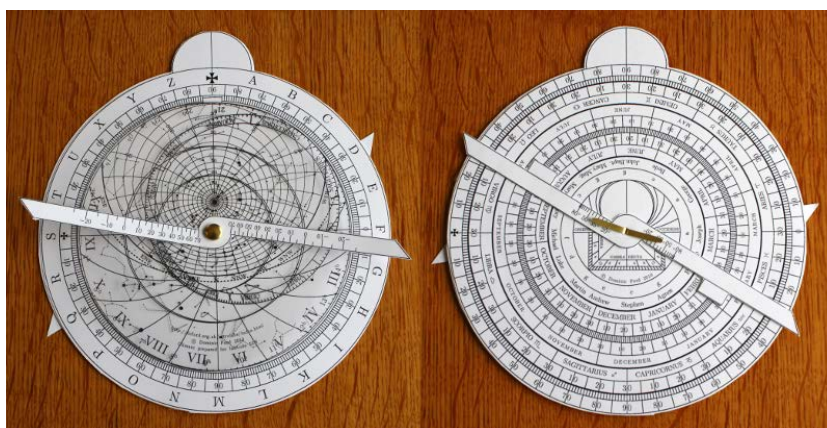


Fig. 2 Paper astrolabe available from **In-the-Sky.org** for download and assembly.

The printed paper parts can be pasted on thin poster board to make the parts more durable. This looks like a great activity to do while sequestered at home awaiting the passing of the pandemic and/or in between ship modeling projects.

•**Jim Rhetta** reminds us that he has some sheets of 1/8" glass which can be used in ship model cases available for free. Thanks Jim!



Kits News (Ken Lum):

•**Admiralty Style Ship Model Kits:** As everyone in this club knows, the pinnacle of the ship modeling art form was reached with the models built mostly in England during the late 17th, 18th, and early 19th Centuries often known as **Admiralty Style** or **Navy Board** models. Perhaps around 500 of these models still exist today mostly in various museums with particularly good collections at the **National Maritime Museum** in Greenwich, England, and the **Naval Academy Museum** at Annapolis, Maryland. There is also the exquisite private collection of the **Kriegstein** brothers.

But the amateur ship modeler has few commercial kits using this construction style to choose from and most recent such models have been scratch-built. Nonetheless, there are a few examples of commercial kits that use this construction style. This article is to remind everyone about them.

Model Shipways has three kits based on contemporary admiralty models of smaller boats, a **Longboat (1742)** (in 1/48 and 1/24) and an **English Pinnace (1750-1760)**(Fig.3).

Syren Models (<https://syrenshipmodelcompany.com>) offers similar models of these subjects in other hardwoods.



Fig. 3. Left-English Longboat, Right-English Pinnace

Ship Model Okumoto (<https://ec.en.ship-model.net>) in Japan offers several unique fully framed ship models that really are attention getters in replicating the Navy Board style (Fig. 4).



Fig. 4. *HMS Endeavour* mode (1/80) by **Ship Model Okumoto**

DeAgostini Model Space (<https://www.model-space.com/us/model-ships/page/3.html>) offers a 1/48 scale Admiralty style model kit of *HMS Bounty* on a subscription basis at \$109.99/mo for 12 months that looks very good (Fig. 5). But the model looks to need more frames like the **Okumoto Endeavour** above to look more credible. The book, **The Armed Transport Bounty** in the **Anatomy of the Ship** series has an excellent framing plan useful for supplemental scratch building.



Fig.5. *HMS Bounty* 1/48 kit by **DeAgostini Model Space**.

Finally, a Chinese company called **ZHL Models** (<https://www.zhlmodel.com/index.php?route=common/home>) is offering some models built in the Admiralty style such as 1/48 kits of the **HMS Bellona**, **HMS Enterprise**, and a Xebec named **Le Requin** (Fig. 6) among several models. These models look pretty impressive, but their website says they first two are not available due to a licensing dispute. Also, their website is hard to use and seems kind of dodgy, so I list them only to inform people of the existence of these models. Also, the **HMS Bellona** photos used look to be of the original NMM 18th Cent. model and not the kit.



Fig.6. Models of **HMS Bellona**, **HMS Enterprise**, and the Xebec, **Le Requin** by ZHL Models.

Some of these models are also showing up on eBay where my attempt at a purchase was cancelled by the seller. Anyway, it seems best to stay away for now.

There is an unboxing video on YouTube of the **HMS Bellona** ZHL kit.

<https://www.youtube.com/watch?v=q5pk4C3JfzE&t=438>

Hopefully ZHL will take care of their marketing issues and make these models more available.



Under Construction at the Model Shipyard

- **Torpedo boat V 108** model by **Jacob Cohn**.

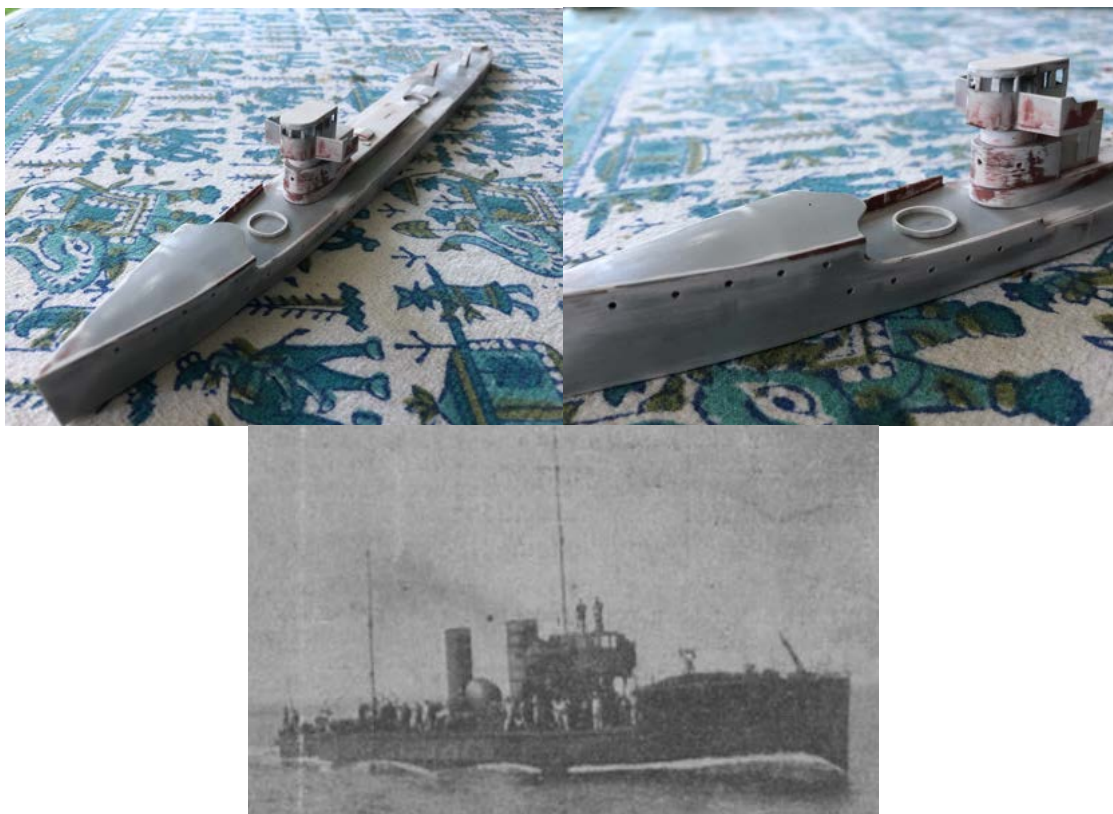


Fig. 7 German **V 108 Torpedo boat** from **Digital Navy**. Above are two photos of Jacob's model under construction. Below is a 1924 photo of the ship as part of the Polish Navy.

Having finished his **Mikasa** model as shown in last month's **Foghorn**, **Jacob Cohn** has now started a 1/200 WW 1 **German V 108 torpedo boat** paper model downloaded from **Digital Navy** (Fig. 7). The above two photos show Jacob's progress on his model. Below is the appearance of the real boat as pictured in 1924 when part of the Polish Navy. **V 108** was one of four sister ships ordered by the Dutch Navy and were being built in Germany before WW 1 broke out. The **Kaiserliche Marine** seized the ships when war began and used them in operations against the Russians.

In 1916, **V 108** was relegated to training duties and passed onto the Polish Navy as the **Kaszub** after the end of WW 1. She was accidentally sunk by a boiler explosion while in dock in Danzig in 1925, and the wreck was subsequently scrapped.

• Jim Rhetta's 1/700 model of the IJN Heavy Cruiser, **Myoko**.

Jim Rhetta has started work on a 1/700 model of the IJN Heavy Cruiser of WW 2, **Myoko**. This model has been a real challenge. For best detail, metal-etched parts are being substituted and added to the ship. Strapping blocks on wood sailing ship was far easier than this experience.

Currently I am cutting out and folding the catapults for the float planes. After folding them, some super glue was added to the last corner to hold the delicate part together (Fig. 8).

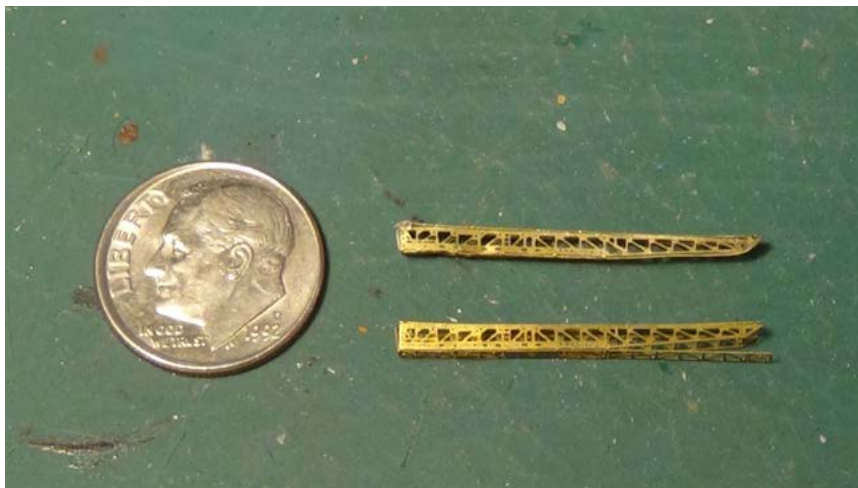


Fig. 8. Photo-etched sea plane catapults for the **Myoko**.

The lower catapult will have the bottom section glued up to complete the structure. These parts are smaller than many tweezers and needle-noze pliers that work well with wooden ship models.

The next task is to mount the propellers on the float planes. The plastic kit does not include this miniature part that would be too hard to cast to scale in plastic. The toothpick points to the photo-etched prop that has to be cut out and glued to the aircraft (Fig. 9) (next page).



Fig. 9. Photo-etched propeller for the float plane model.

The ***Myoko*** was launched in 1927 and participated in numerous fleet actions throughout WW 2. These included the invasion of the Philippines, Battle of the Coral Sea, Midway, Leyte Gulf just to name a few. She was hit by a torpedo in the starboard propellers during the **Battle of Leyte Gulf (Oct. 23-26, 1944)**.

She left to return to Japan via Cam Ranh Bay in Vietnam. But on the way to Cam Ranh Bay, she was hit again by torpedoes, this time, from the American submarine, ***USS Bergall***, which blew off her stern. With only one port side propeller left operable, she was able to make about 6 knots but was unable to steer. So she was taken under tow by the destroyer, ***Ushio*** to Singapore. But ***Myoko*** could not be repaired at Singapore due to a lack of resources so she was converted to a floating anti-aircraft battery (Fig. 10). The war ended before she was to see any more combat, and she was towed to the [Strait of Malacca](#) and scuttled off Port Swettenham, Malaya (near present-day [Port Klang](#), [Malaysia](#)).



Fig. 10. ***Myoko*** in Singapore at the end of WW 2.

The kanji name for **Myoko** (妙高) is pronounced **Miào Goa** in Chinese making it close to the Japanese pronunciation. It seems to mean **Great!** So, **Myoko** could derive from a Chinese loan word.



SBMS Club Officers

President	Jim Rhetta	email: jmrhetta@aol.com
Vice President And Newsletter Editor	Ken Lum	email: lum40@comcast.net
Treasurer	Jacob Cohn	email: jcohnster@gmail.com
Harbor Master	George Sloup	email: george.p.sloup@outlook.com
Webmaster	Jim Tortorici	email: oday20@earthlink.net



2020 Meeting Dates: All in-person club meetings are cancelled by the Los Altos Public Library until further notice. Instead, we are conducting Zoom meetings as an alternative. Stay tuned for further news.



2020 Annual Club Membership

Send in your 2020 Club Membership with attached renewal form! Submit a \$20 check made out to South Bay Model Shipwrights and mail to Jacob Cohn, 726 7th Ave, Redwood City, CA 94063. Welcome Aboard!

2020 Membership Form

Make check out for annual membership of \$20.00 to South Bay Model Shipwrights and mail to Jacob Cohn, 726 7th Ave, Redwood City, CA 94063

Print your name _____ Phone# _____



Address

Receive our Foghorn newsletter by email? Yes ___ No___

Email address _____

To order a club name badge, add \$15.00 to your check and print your name exactly as it should appear on the badge