

# South Bay Model Shipwrights

Founded by Jean Eckert 1982

Website : <http://www.sbmodelships.com>

## The Foghorn

January 2021



*Message From  
HMS Resolution:  
Build Models!*



### *Future Course Headings...*

- **Future meetings: In-person meetings still cancelled until further notice.** We said Happy New Year last year also, but instead it has turned into a very challenging year, indeed! Let's hope for more positive times ahead. While we lost our beloved **Jean Eckert** as well as **Capt. Patrick Moloney** last year, at least nobody in the club was lost to COVID that we know of. And so, we are all still carefully threading together through the current **Scylla** and **Charybdis** hazards of the coming year in hopes of eventual safe harbor. Make sure to get your coronavirus and flu vaccines whenever they are available!

Prez **Jim Rhetta** is anticipating another Zoom meeting next week so look out for his email with the link.

• **All local museums are closed until further notice due to the coronavirus outbreak.**

• **March 20, 2021 International Plastic Modelers Society (IPMS)/Silicon Valley Classic.** Let's hope this happens, but we are still not surfaced above the pandemic yet!

• **October, 2021. Natical Research Guild Annual Convention, Oxnard, CA.** The cancelled 2020 NRG convention has been rescheduled for October of 2021 at the **Channel Islands Maritime Museum** in Oxnard, CA. You can learn more about the museum at:

<https://cimmvc.org>

and there are several very nice video tours of the museum on YouTube as well. More news about this event can be found at the NRG website.



## *Maritime Matters of the Month*

• **Marine archeologists discover ancient shipwrecks off island in the Aegean (Nick Squires).**

Four shipwrecks, including one dating back to Roman times, have been discovered by marine archeologists off the Greek island of **Kasos** in the Aegean (Fig. 1). Lying between Rhodes and Crete, the Dodecanese island was on a crucial trade route in antiquity.

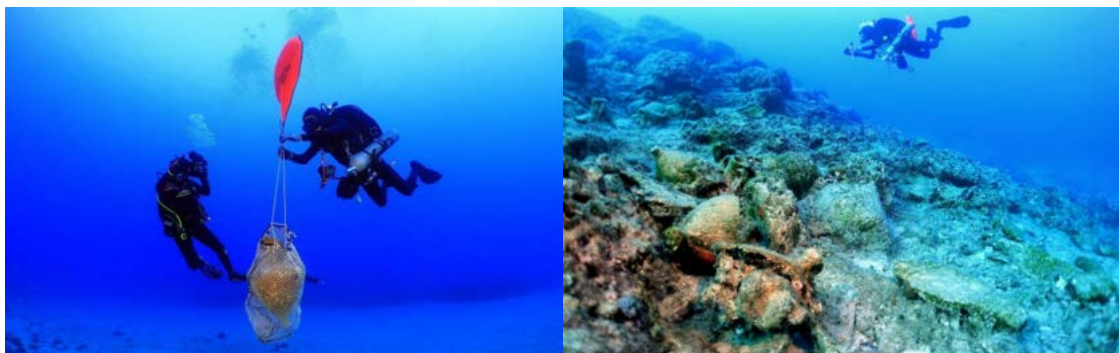


Fig. 1. Divers exploring and excavating artifacts from the shipwrecks (Hellenic Ministry of Culture)

Inside the Roman-era shipwreck, divers found amphorae which originated from Spain and what is now Tunisia, the Greek culture ministry said (Fig. 2). They would have been used to transport wine, olive oil and possibly *garum* – a pungent fish sauce that was much prized by the Romans.



Fig. 2. One of the amphorae found off the island of **Kasos** (Hellenic Ministry of Culture)

The ship has been lying on the seabed for nearly 2,000 years - it is believed to date back to the 2<sup>nd</sup> or 3<sup>rd</sup> century AD. Of the other three wrecks, one dates back to the first century BC, another is from the 5<sup>th</sup> century BC, while the third is much more recent.

Underwater exploration of the area began in 2019 and in November of that year archeologists found three wrecks, the oldest of which was a merchant vessel from 2,300 years ago. Divers found five stone anchors around the wreck. They also discovered iron cannons, pottery, amphorae and other scattered objects, some of which they believe belong to other ships that sunk but have not been found yet.

**Kasos** is the southernmost of the Dodecanese chain of islands and was “a crossroads of civilisations, an important navigation route from antiquity to recent times,” the culture ministry said. In 2018, marine archeologists discovered 58 shipwrecks around the **Fourni islands**, further north in the Aegean, describing it as possibly the largest concentration of ancient wrecks ever found in the Aegean, even the whole of the Mediterranean.

Most of the wrecks were from the Greek, Roman and Byzantine eras. The ships would have carried goods to and from Greece, the Black Sea, Asia Minor and North Africa.



### *Kits News (Ken Lum):*

- **New kit of the *RMS Titanic*.**

Clare Hess said during the last meeting that the Japanese model firm, **Woody Joe**, is coming out with a kit of ***RMS Titanic***. More on this when we get additional news.

- **Navio Rayo Gun Section Kit (Fig. 3 and 4).**



Fig. 3. Navio **Rayo** Gun Section Kit

It was about 3-1/2 years ago that **Ages of Sail** first introduced this new line of Spanish wooden model kits to North America. Among the first batch of kits was an often overlooked 1/32 scale wood model kit of a section of the 18th-century Spanish warship **Rayo**. The **Rayo** was an 80-gun ship-of-the-line built in 1746. The ship was rebuilt in Cartagena in 1803, transforming her into a three-decked ship of 100 guns.

Soon after, the *Rayo* joined the coalition of French and Spanish ships sailing out of Cadiz on 18 October, 1805. Three days later the combined French and Spanish fleet encountered the British fleet under Admiral Lord Nelson off **Cape Trafalgar** on the southwest coast of Spain.

In the heavy fighting of the battle fleets, the **Rayo** was dismasted, but survived the initial battle. A few days later, the ship sailed out in an attempt to recapture some of the ships taken by the British. In the effort, she was captured by the British, and a British prize crew was put aboard. However, in a heavy storm that followed the battle, the ship ran aground and the British prize crew set fire to her and abandoned her.

This model kit is available from **Ages of Sail** retailers. A photo review of the box contents can be seen at:

<https://blog.agesofsail.com/2021/01/10/taking-another-look-navio-rayo-gun-section-kit/>



Fig. 4.



## *Maritime Books of Interest (Ken Lum):*

- **Book on the experience of working replica sailing ships (Fig. 5).**

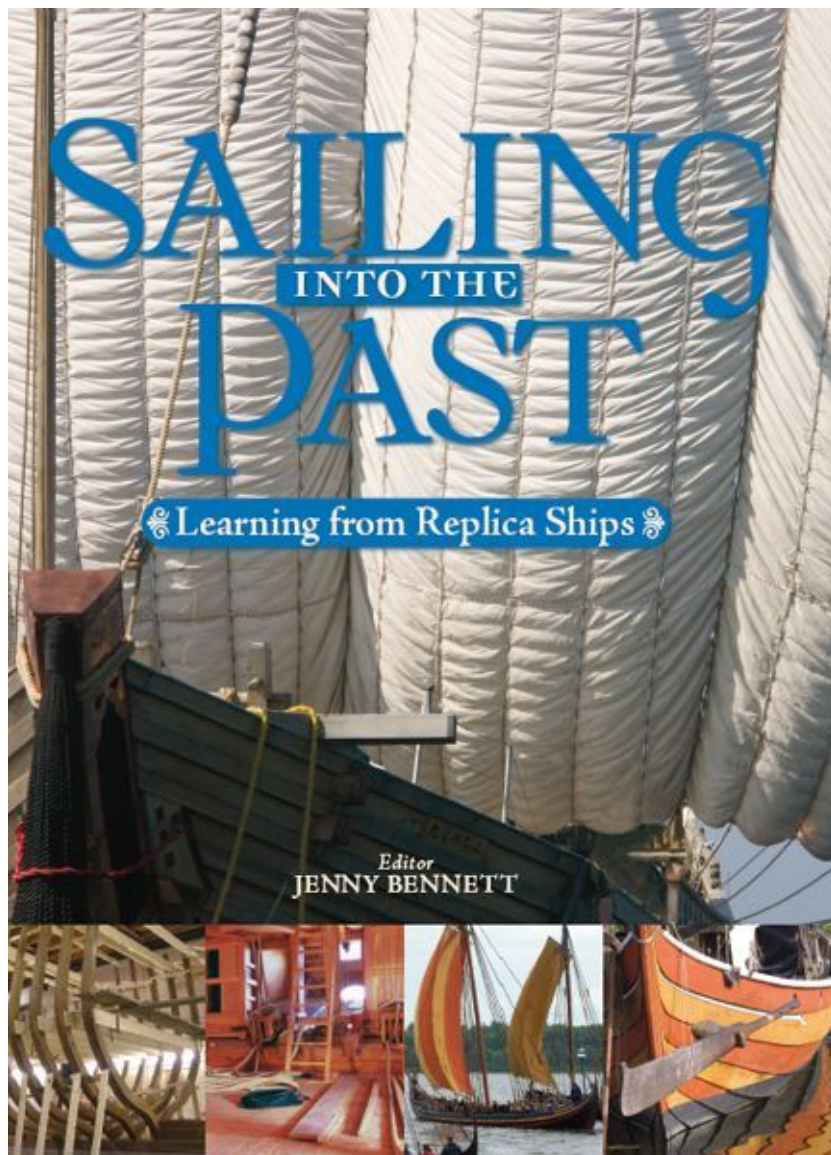


Fig. 5.

Until recently, there was little practical knowledge of the ships of the distant past. We could only surmise as to the manner in which a Viking ship sailed or how fast a Greek trireme could be rowed. The building of accurate replicas over the past generation has changed all that, and what

has been learnt about the ships and boats of our ancestors has radically changed our perceptions of sailing and voyaging.

This beautifully-illustrated new book charts those discoveries. The world's leading authorities look at individual replicas and discuss what they have taught us. Boris Rankov and John Coates, for example, discuss the Greek trireme, while Antonia Macarthur outlines the lessons learnt on Cook's Endeavour.

Each chapter deals with a particular vessel and construction, sail plans, and the intended role are covered before an analysis of sailing performance is discussed. Windward ability, speed and ease of handling are all dealt with. General chapters by Richard Woodman and Sean McGrail set the scene.

A fascinating work which offers the most accessible view yet as to how the ships of our seafaring forbears affected the manner in which they traded, fought and explored. (Publ. 2009).

- **3<sup>rd</sup> Edition of the Kriegstein book on Admiralty Board ship models (Fig. 6).**

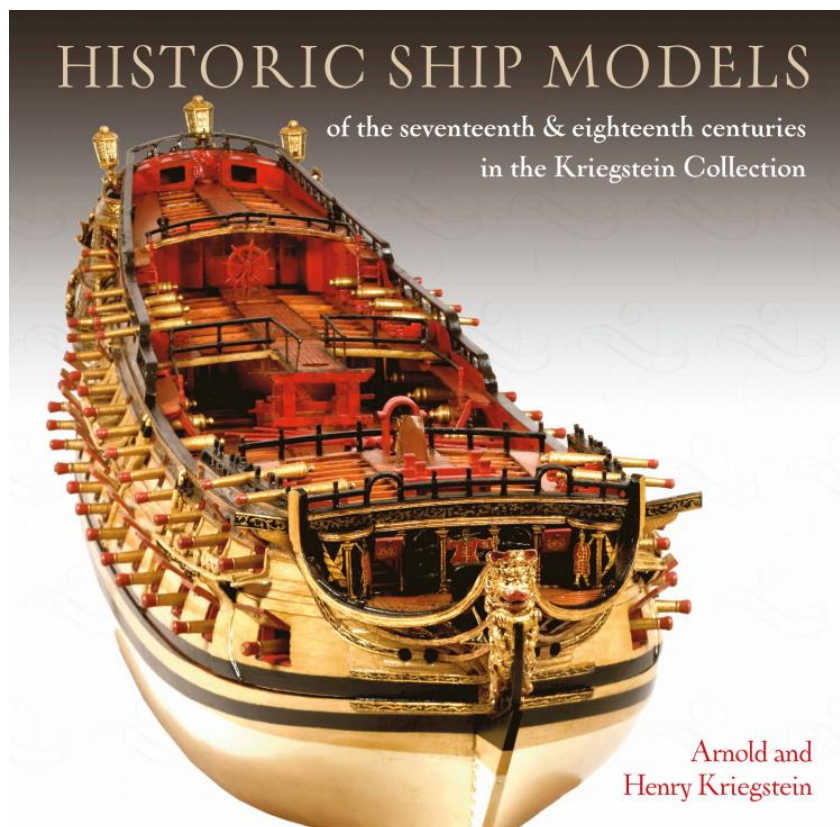


Fig. 6

The Kriegstein brothers have been collecting antique admiralty board ship models for many years and have published two editions of a

book atlas of their collection through **SeaWatch** publishers. Now, a third edition is being issued by the **Naval Institute Press**, due out June, 2021.

In terms of quality, historical significance, and sheer numbers, the Kriegstein family's ship model collection in the United States is the finest in private hands anywhere in the world. Principally made up of official 17th and 18th century models in the Admiralty or Navy Board style, the collection is unrivaled by any museum outside the British national collection at Greenwich.

As the models are not on public display, this book fills the need for a detailed catalog and visual reference with superb color photos of all the models, both overall portraits and multiple close-ups. Apart from lengthy descriptions of these magnificent artifacts, space is devoted to how they were identified, and the valuable research done by Arnold and Henry Kriegstein, the identical twins whose shared passion brought this all together.

Beyond the technicalities of the ships, the story has a human dimension in the brothers' adventures in pursuit of every model and their dogged determination to secure them against official obstruction and dubious antiques-trade practices. This is an entirely new and revised edition of *17th and 18th Century Ship Models* first published in 2007, now expanded to include the additions to the collection since that date.



## *Under Construction at the Model Ship-yard*

### • **Request for Completion of an old *HMS Endeavour* kit (Jim Rhetta).**

The club has been contacted by an individual who would like his model of the *HMS Endeavour* completed. The model comes from an **Artesania Latina** kit (Fig. 7).

He started it 20 years ago and completed the hull but set it aside due to other priorities until now. He is unable to complete the rigging and found our club in a search on-line.

The owner is located in Long Beach and was unable to find a member of the local clubs to complete this ship. He will ship it to me for completion and Walt will make a case for it. The mechanics of returning



the completed ship is a question but may be conducted during planned travels to So Cal this spring.



Fig. 7. Incomplete *HMS Endeavour* model needing completion of rigging.

This is the sixth ship we have received for restoration/repair/completion in the past 14 months, an indication that the web site is an effective means for the public to find the club. We do need to add a section to the website to show these repairs and completions we have finished.

- ***Cannon Jolle* model from Master Korabel (Jacob Cohn).**

Jacob has started in on a small kit from the Russian manufacturer, **Master Korabel** of a gun boat originally designed by the 18<sup>th</sup> Century Swedish-born (parents were English) naval architect, **Fredrik Hendrik af Chapman** for Sweden's **Archipelago Fleet** (Fig. 8).

Chapman is often called the first naval architect as he pioneered the application of scientific methods to the design and building of watercraft. He was also the author of **Architectura Navalis Mercatoria**.



Fig. 8. Swedish gunboat of Chapman design

These gunboats were used extensively during the **Battle of Svensksund** in 1790 in the **Gulf of Finland** during the **Russo-Swedish war of 1788-90**. The battle led to a massive Russian defeat.

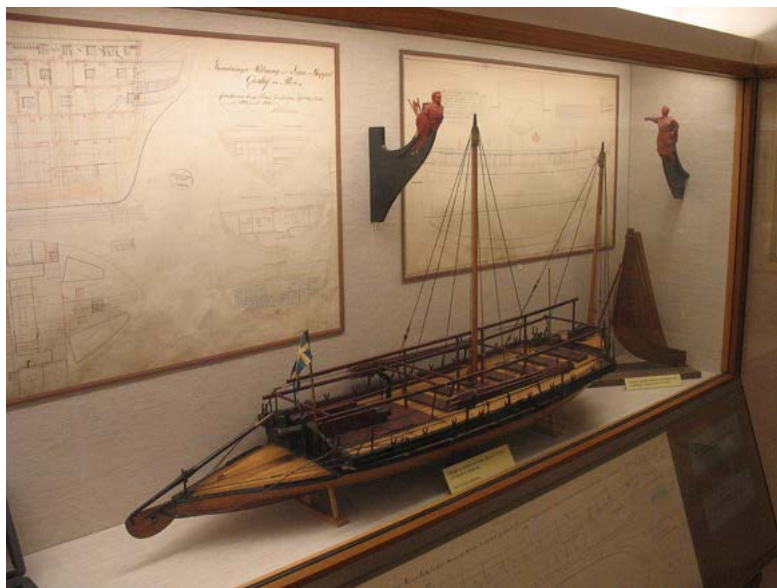


Fig. 9. Museum model of a Chapman gunboat

There is a build log of the same kit by a Jim Rogers on the **NRG Model Ship World Forum** at:

<https://modelshipworld.com/topic/18378-cannon-jolle-1801-by-jim-rogers-finished-master-korabel-172-scale/>



## *SBMS Club Officers*

<b>President</b>	<b>Jim Rhetta</b>	email: <a href="mailto:jmrhetta@aol.com">jmrhetta@aol.com</a>
<b>Vice President And Newsletter Editor</b>	<b>Ken Lum</b>	email: <a href="mailto:lum40@comcast.net">lum40@comcast.net</a>
<b>Treasurer</b>	<b>Jacob Cohn</b>	email: <a href="mailto:jcohnster@gmail.com">jcohnster@gmail.com</a>
<b>Harbor Master</b>	<b>George Sloup</b>	email: <a href="mailto:george.p.sloup@outlook.com">george.p.sloup@outlook.com</a>
<b>Webmaster</b>	<b>Jim Tortorici</b>	email: <a href="mailto:oday20@earthlink.net">oday20@earthlink.net</a>



**2021 Meeting Dates:** All in-person club meetings are cancelled by the Los Altos Public Library until further notice. Instead, we are conducting Zoom meetings as an alternative. Stay tuned for further news.



## **2021 Annual Club Membership**

Send in your 2021 Club Membership with attached renewal form! Submit a \$20 check made out to South Bay Model Shipwrights and mail to Jacob Cohn, 726 7<sup>th</sup> Ave, Redwood City, CA 94063. Welcome Aboard!

### **2021 Membership Form**

Make check out for annual membership of \$20.00 to South Bay Model Shipwrights and mail to Jacob Cohn, 726 7<sup>th</sup> Ave, Redwood City, CA 94063

Print your name \_\_\_\_\_ Phone# \_\_\_\_\_



Address

\_\_\_\_\_  
\_\_\_\_\_

Receive our Foghorn newsletter by email? Yes \_\_\_ No \_\_\_

Email address \_\_\_\_\_

To order a club name badge, add \$15.00 to your check and print your name exactly as it should appear on the badge