



英智：家族办公室
INGENIOUS | FAMILY OFFICE

The keys to your legacy:
Values, Responsibilities, Trust.



A large, stylized Chinese character '家' (Family) is rendered in a dark blue color, serving as a background for the text. The character is composed of several thick, flowing strokes that create a sense of movement and depth. The top part of the character features a horizontal stroke that curves upwards at the right end, while the bottom part consists of several sweeping, downward-pointing strokes that converge towards the center.

FAMILY OFFICE

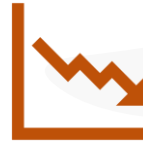
KEY ISSUES AFFECTING FAMILY BUSINESS



Crises in Family Business & Corporates

Passing of control to next generations who are not ready or willing to take over the family business.

Natural death if no innovation or changes.



Volatile & Uncertain Market

Uncertainties across global business & markets.

New Msian Govt.
China – USA Trade War, etc



Limited Funding & Credit Line

Business has ran out of options in funding and credit line.

Banks are not supporting.

COMMON ISSUES

- No succession plan in place.
- Founders are too emotional to let go.
- Inherited, but no passion or clue what to do with it.
- Business declining, heading to natural death.
- No professionals as the business is infected with family “parasites”.
- Family dispute on control, power struggles, international politics.
- Don't trust outsiders.



FAMILY OFFICE SERVICES

We work with family business owners in establishing family office and corporate structures, transforming their businesses into corporations that are adaptive and sustainable, and last through generations.

We aim to provide families with peace of mind in accumulating, maximising and preserving their wealth and legacy for the future generations.

FAMILY OFFICE



Family Wealth Management



Family Business Transformation



Succession Planning

STRATEGIC ADVISORY



Risk Management



Dispute Management

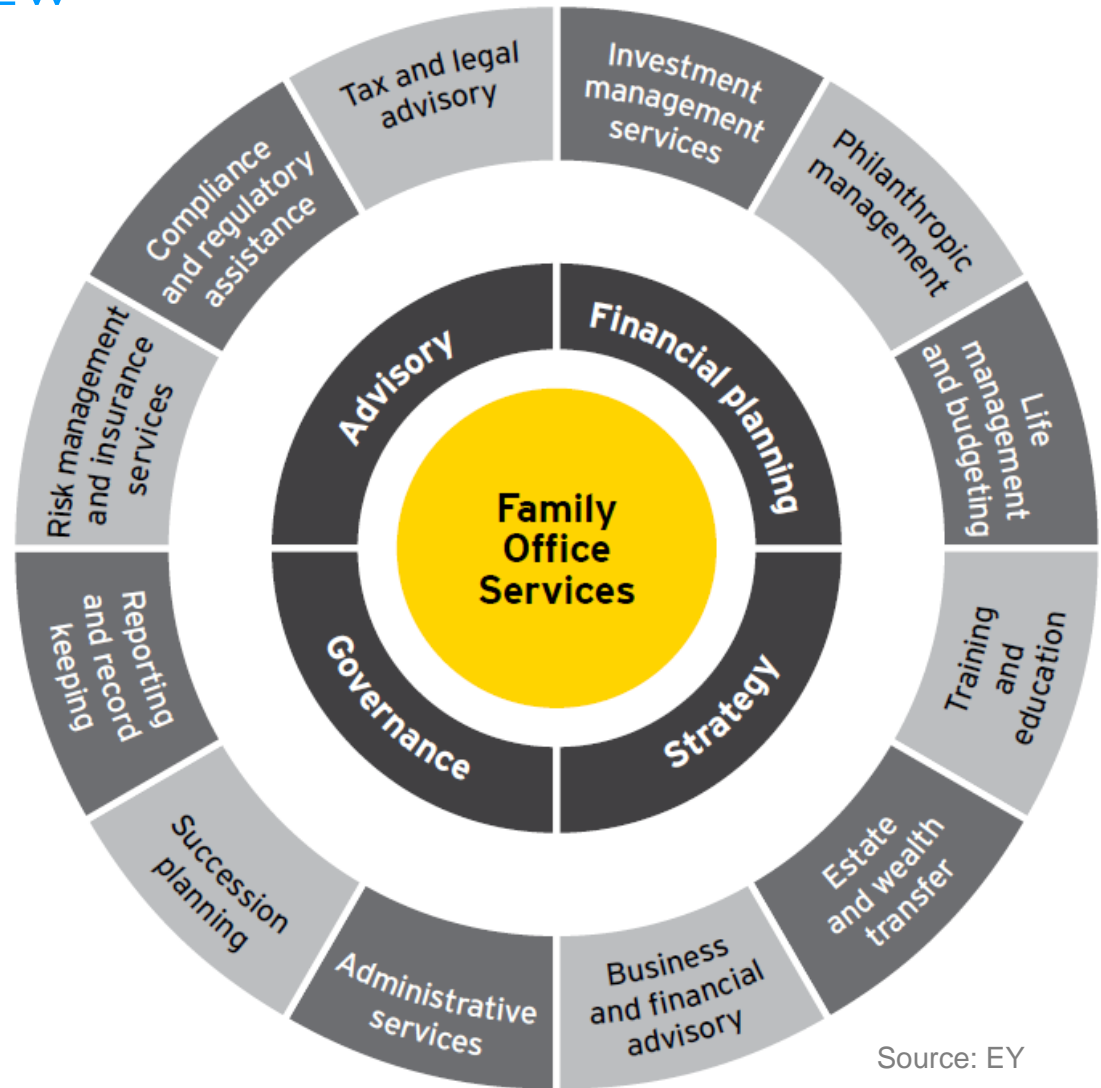


Exit & Liquidity Management

FAMILY OFFICE OVERVIEW

We **understand** your needs, **strategise** with your family, create the right **structure** and **execute the mandate**.

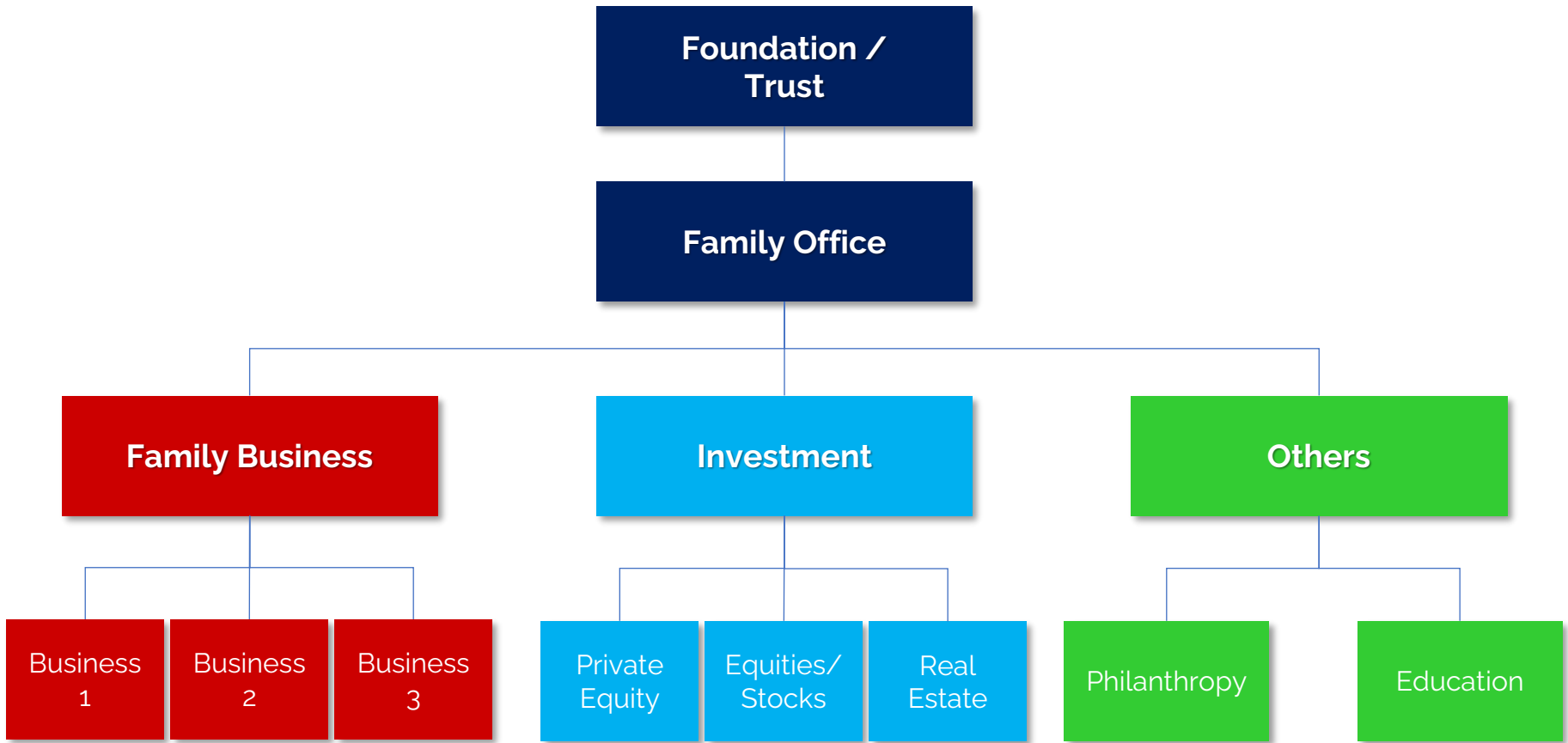
We collaborate & work with professionals with different expertise to provide the best value and solutions to your family.



Source: EY

BESPOKE SOLUTIONS

We design the right structure that suits your family needs:



The background features large, faint, stylized Chinese characters in a light blue color. The characters are '家' (family/home) and '業' (profession/industry), which together mean 'family business' or 'industry'. They are positioned behind the central text.

ABOUT INGENIOUS

ABOUT US

At Ingenious, we have been providing financial services to entrepreneurs, business owners, individuals and families since 2004.

We empower entrepreneurs with the right corporate strategies & smart capital in growing their business, to accelerate growth, create value and maximize wealth for all stakeholders.

Our capabilities in structuring complex transactions, managing conflict and troubleshooting problems enables us to develop solutions for entrepreneurs to deal with the challenges of the business environment today.

We believe in partnership based on trust, integrity and respect.

HOW WE CAN HELP

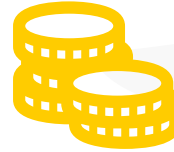


Accelerate Growth & Corporate Exercise

Initial public offering (IPO)

Mergers & acquisitions in related business.

Diversification of business portfolio.



Smart Capital & Funding Support

Providing smart capital to family enterprises.

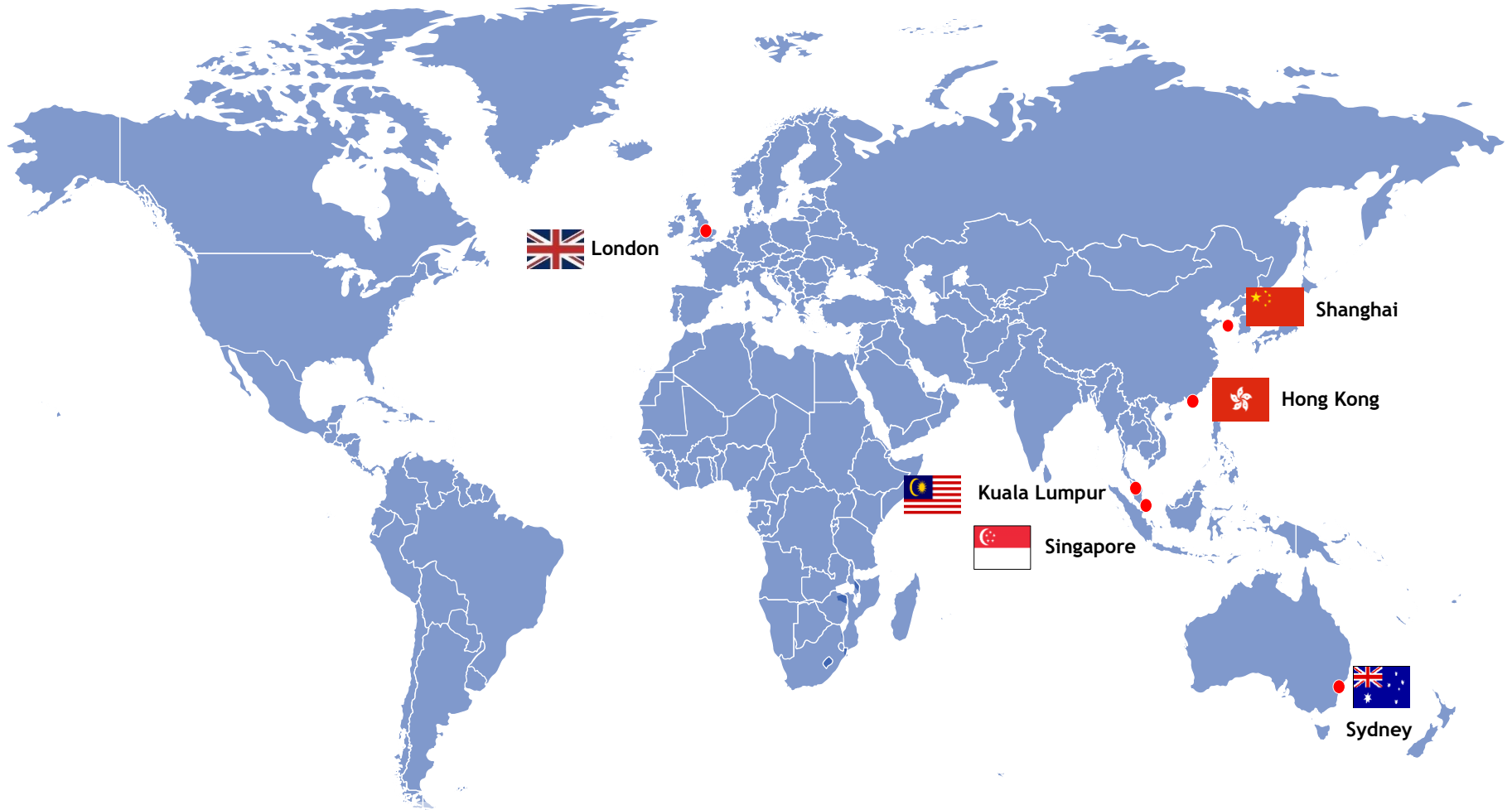
Advice on fund raising matters to grow the business.



Corporatisation, Divestment & Exit

Corporate restructuring, recruit professional managers.

Exit strategy – selling or divesting non core business, in partial or whole.



INGENIOUS HAUS GROUP LIMITED

Kemp house, 152-160 City Road, London, EC1V 2NX

ingenioushaus.com | williamdu.com | facebook.com/ingenioushaus

Kuala Lumpur . Singapore . Hong Kong . Shanghai . London . Sydney