

## How to Read This Map

This document contains three pages:

(Page 1) an Orthomosaic Image

(Page 2), a Contour Map

(Page 3) combined overlay

Use the first page to identify visible features in the field (e.g., bare spots, water pooling, crop variation).

The second page shows contour lines derived from RTK elevation data.

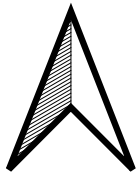
The third page helps correlate real-world conditions with subtle elevation differences.

### Understanding Elevation Values

Elevation is shown in negative values (e.g., -18 to -22). In this system, more negative values indicate lower ground—for example, -22 represents a gully, while -18 is relatively higher ground or a hill. Use this information to identify where water will naturally collect and flow, helping you plan drainage, leveling, or planting strategies more effectively.

### custom zero-points

Elevation can be centered on any location you choose—making it easier to align with your existing benchmarks or equipment.

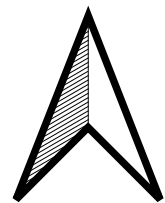
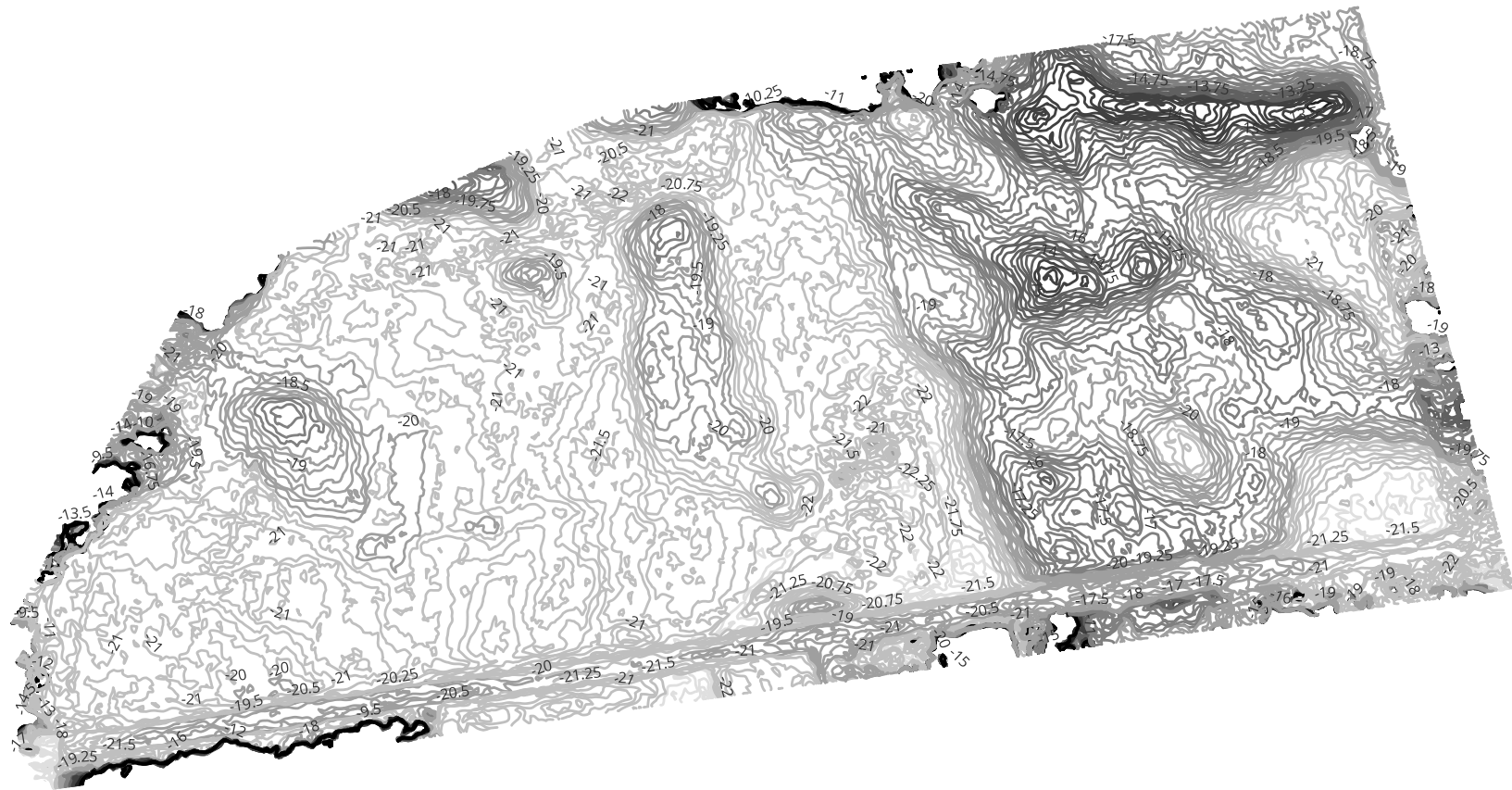


North

Andrew Tobais

207 Drone Photography LLC

207 252 4068



North

Andrew Tobias

207 Drone Photography

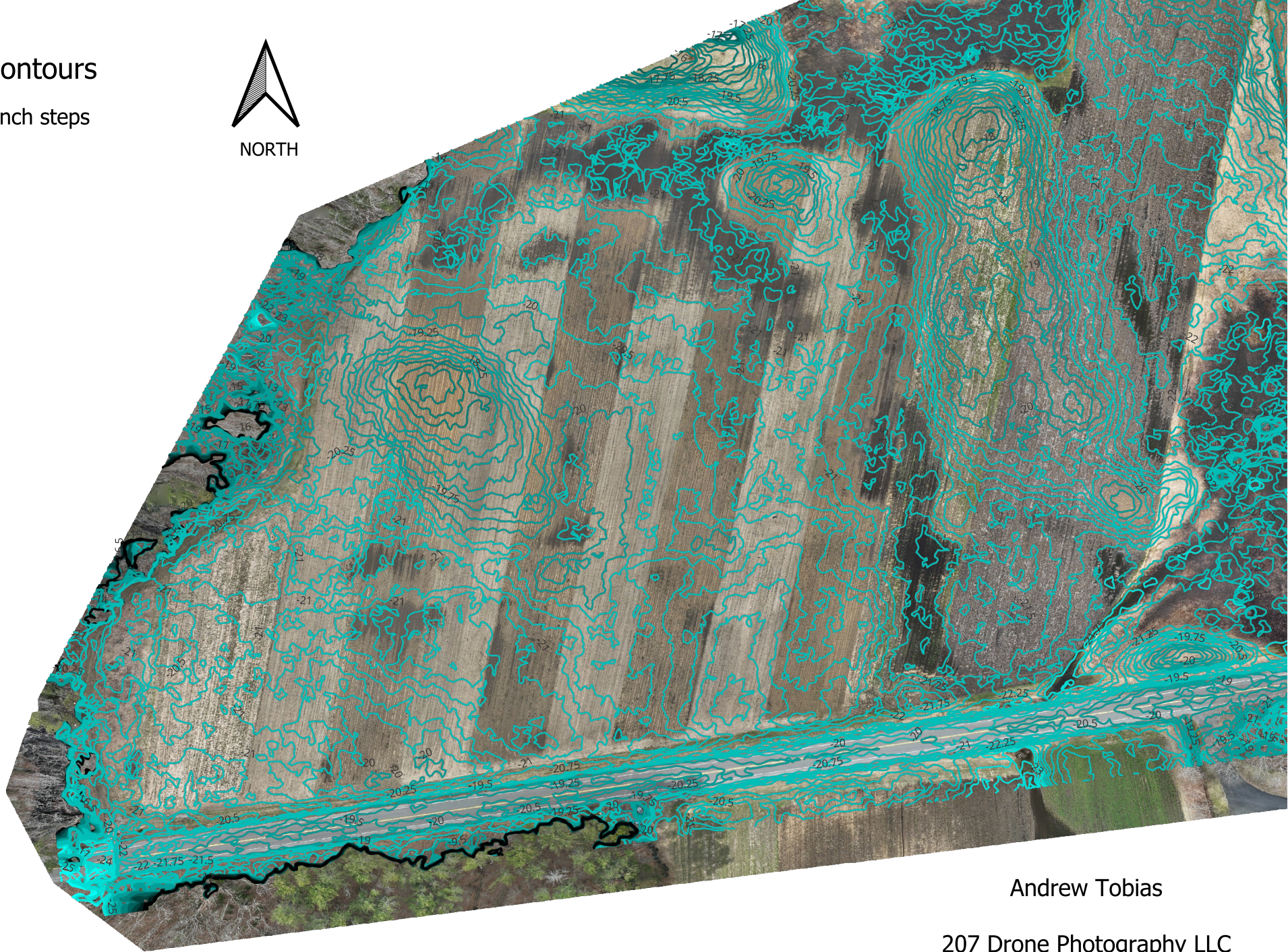
207 252 4068



# Farm With Contours

Farm contour 3 inch steps

- 25 - -24
- 24 - -22
- 22 - -20
- 20 - -18
- 18 - -16
- 16 - -14



Andrew Tobias

207 Drone Photography LLC

207 252 4068