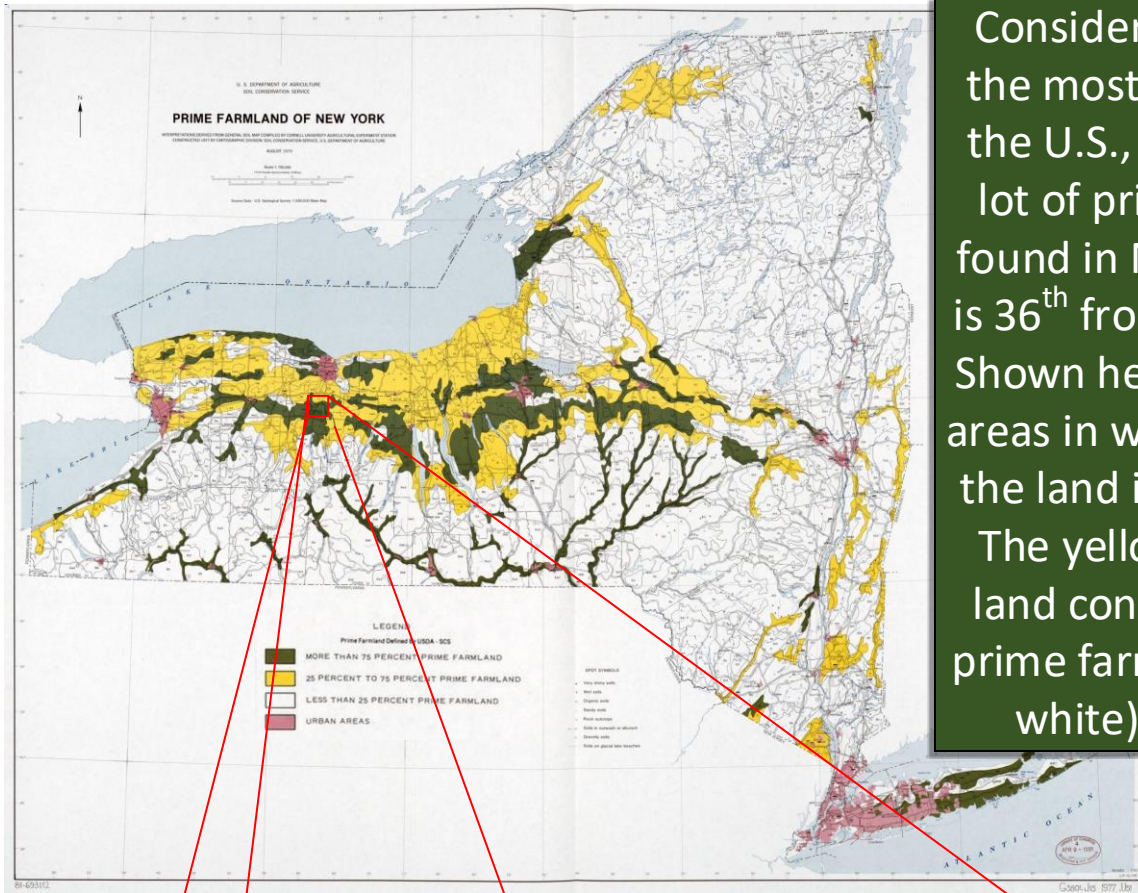
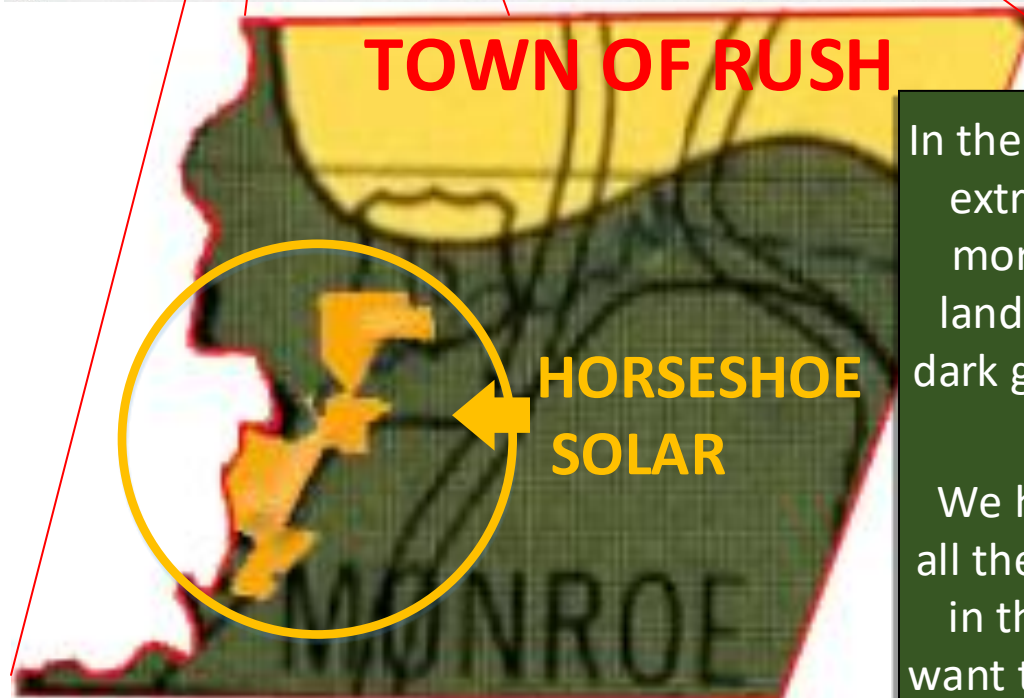


Prime Farmland in New York State and in the Town of Rush



Considering that it is one of the most populous states in the U.S., there isn't a whole lot of prime farmland to be found in New York State. NYS is 36th from the top out of 50! Shown here in dark green are areas in which 75% or more of the land is considered prime. The yellow areas represent land containing 25% to 75% prime farmland. The rest (i.e., white) is less than 25%.



TOWN OF RUSH

In the NYS Town of Rush, we are extremely fortunate to have more than two-thirds of the land in the town fall into this dark green designation; the rest is in the yellow area.

We have to wonder why, with all the non-prime land available in this great state, we would want to displace the most highly valued farmland with solar facilities beyond the extent already provided by Town Law?