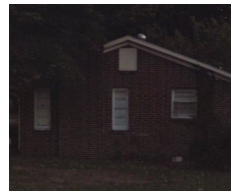


FOR SALE Contact Your Teammate \$90,000

1832 E. Sprague | Winston Salem | North Carolina | 27107



Main: (214) 305-2880
Fax : (214) 614-4488
info@thesmarfundltd.com
sheltonsolution.com

CONTACT A TEAM MEMBER

- Ken 214-305-2880
- Joel 214-305-2671
- Gary 214-770-7348
- Robert 214-305-2670

TO PURCHASE

SEND OFFER TO

- info@thesmarfundltd.com
- Fax: 214-614-4488
- Contact your team member for more options today!

BRING YOUR PICKIEST BUYERS! Nearby schools include Forest Park Elementary, R B Glenn High and Winston-Salem Preparatory Academy. Located in the heart of historic Waughton neighborhood. There are excellent bike lanes and the terrain is mostly flat. Fireplace, heat pump and central A/C.

- 3 Bedrooms - 1 Bath
- 1.11 Acre Lot
- 1,144 Square Ft
- Financial Assistance Up To 6%
- Buyer Credit Up To \$5,000
- Ask About SELLER FINANCING!

Call Your Teammate Today (214) 305-2880

 **Lawyers Title**
LATHRAM POU & ASSOC. ▪ CATHY MILLER TEAM



SHELTON SOLUTIONS