

**94th Annual Austin County Fair
Home Economic Catalog
October 7-17, 2021**

TABLE OF CONTENTS

Schedule of Events	2-3
Home Economics Committees	4-5
General Rules	6-9
Floral Design/Fair Cup Competitions	10-14
Miniscapes/Container Plants Competitions	15-21
Youth Department Rules	22-24
Youth Departments	25-34
Adult Department Rules	35-36
Adult Departments	37-49
Fine Arts Department	50-53
Flower Show	54-57
Country Store	58-59
Country Fair Auction	60

SCHEDULE OF EVENTS



Sunday, October 3, 2021

9:00 am

Container Plant Competition at the Expo

10:00 am

Miniscape Competition at Entertainment



Thursday, October 7, 2021

8:00 am

Floral Design/Senior Fair Cup

/Mandatory Pre-event Meeting

1:00 pm

Junior Fair Cup/Senior Floral Design

Competition/Mandatory Pre-event Meeting

Saturday, October 9, 2021

9:00 am – 8:00 pm

County Store Open



Monday, October 11, 2021



10:00 am-7:00 pm

Entries accepted in the EXPO CENTER for all departments: 4-H Junior/Junior FFA, 4-H Senior/FCCLA/Senior FFA, Open Youth, Extension Education, Open Adult, Flower Show, Fine Arts
Items removed prior to scheduled removal time will forfeit all prize money.



Tuesday, October 12, 2021



10:00am- Until Done

Judging of all exhibits in **Expo Center.**

Building will be closed during judging.

10:00am -8:00 pm

Country Store Open

Wednesday, October 13, 2021

10:00am-8:00 pm

Country Store Open

Thursday, October 14, 2021

11:00am -10:00 pm

Country Store Open

Friday, October 15, 2021

10:00 am- 10:00 pm

County Store Open

Saturday, October 16, 2021

12:00 Noon-10:00 pm Country Store Open

1:00 pm COUNTRY FAIR AUCTION in the **Expo Center**
Sunday, October 17, 2021

11:00-2:00 pm Country Store Open

12:00 noon-3:00 pm Awarding of prize money in the **Expo Center**. Remove all exhibits. Removal of Junior/Senior Floral Design Tables

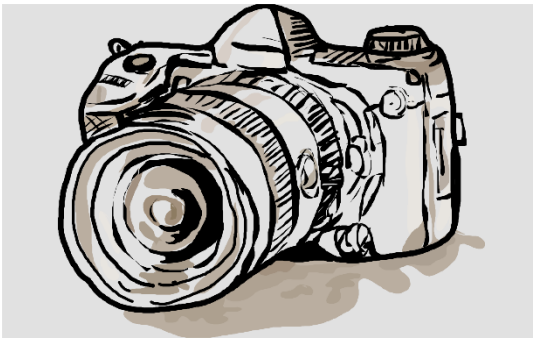
Items removed prior to scheduled time will forfeit all prize money.



Pictures will be taken in the Expo Center for Grand and Reserve Champions and High Point Winners for the following:



12:00 Noon 4-H Junior/Junior FFA Department.
12:15 pm 4-H Senior/ FCCLA/Senior FFA and Open Youth Departments.
12:30 pm Extension Education Department.
12:45 pm Open Adult Department.
1:00 pm Flower Show Department Trophy Winners



HOME ECONOMICS COMMITTEES

Building Superintendent: Carolyn Balke
Assistant Building Superintendent: Anita Kramer

Austin County Fair Advisors

Carolyn Balke, Erika Guerrero, Anita Kramer, Lynette Lee, Judy Schulz, and Mary Smentek, Michelle Wright

Open Adult Department

Chairman: Doris Sodolak
Committee: Miriam Bixler, Brenda Blum, Elaine Galle, Lisa Galle, Sandra Gilbert, Candi Hardin, Sharon Heimann, Grace Holtkamp, Debra Kollmann, Anita Kramer, BJ Mayuer, Laurie Michalke, Sharon Spiess, Gayle Waak, Beth Werry, Linda White, Carol Wietstruck and Diane Young

Extension Education Department

Chairman: Carolyn Balke and Malinda Schramm
Committee: Pat Allee, Annette Balke, Gaye Farr, Gladys Frank, Marie George, Doris Glenwinkel, Gloria Havemann, Jessie Kokemor, Debra Kollman, Karen Landrum, Betty Lehmann, Erika, Moldt, Pam O'Brian, Sandy Pillion, Knellen Quinteros, Jo Ann Reichle, Lois Schubert, Bonnie Schulz, Judy Schulz, Geraldine Siptak, Betty hiel, Barbara Vohs, Barney Zimmerman

Open Youth Department

Chairman: Angela Gutowsky
Committee: FCCLA Officers and Members

4-H Junior/Junior FFA Department

Chairman: Erika Guerrero
Committee: Pam Herman, Raelynn Holle, Brittney Hall, Jonna Horak Barbara Klein, Dianna Schubert, Kim Spacek, and Sonda Tiemann

4-H Senior FCCLA/Senior FFA Department

Chairman: Lisa Bilski
Committee: FCCLA Officers and Members

Flower Show

Chairman: Mary Smentek

Fine Arts Department

Chairman: Mary Beth Kirk/Melanie Smith

Committee: Art Teachers from Austin County School Districts

Photography

Chairman: Pam O'Brian

Co-Chairman: Mandy Worsham

Committee: Pat Allee, Elna Brune, Bernice Burger, Cherie Burger and Betty Thiel

Country Store

Chairman: Carolyn Balke

Committee: James Balke Joan Buenger, Peggy Doty, Anita Kramer, Whitney Mahlmann, Knellen Quinteros, JoAnn Reichle, Delbert Schramm, Malinda Schramm, TJ Schulz, Ellen Wetherington, Barney Zimmerman

Country Fair Auction

Chairman: Kim Bond & Tara Wise

Committee: Molly Arndt, Randy Bond, Kelsey Craft, Peggy Doty, Lorene Henke, Candy & Tim Janish, Ross Janish, Gregory, Lisa & Lilly Kaspar, Garrett Krause, Danita Schovajsa, TJ Schulz, Joy Siedel, Sarah & Chad Stallings, Charlie Tiner - Auctioneer, Michael & Heather Tiemann, Morgan Tieman and Ginny Ward

Floral Design/Fair Cup Committee

Chairman: Lynette Lee

Committee: Baylee Adams, Emily Allen, Tiffany Craft, Erika Guerrero, Jonna Horak, Sheridan Malota, Angela Snowden, Christi Tobola, and Melissa Virnau

Horticulture Committee

Chairman: Erika Guerrero/Melissa Virnau

Committee: Amie and Matt Menefee

GENERAL RULES

ENTRY INFORMATION

1. All departments are color coded as follows:
4-H Junior/Junior FFA – Yellow
4-H Senior/FCCLA/Senior FFA – Green
Open Youth – Lavender **Open Adult** – White
Flower Show – Blue **Fine Arts** – Coral
TEEA – Pink



2. All entry cards and tags are available at the Austin County Fair Office (979-865-5995) and the Austin County Extension Office (979-865-2072). **There is an explanation powerpoint to provide guidance on completing entry cards and tags.**

3. All articles entered must be labeled with the appropriate tag. The tag must contain the classification of article and name of article. Entry cards must be completed by the exhibitor and have the appropriate signature for the youth division. **No multiple participant entries allowed. Only single participant entry accepted unless otherwise designated.**

4. **DO NOT MIX CATEGORIES. PLACE ONE CATEGORY ON A CARD.** (Example all category A items on one card.) Only one item per class (Ex. A1).



5. All entries must be made during 2020 and 2021. They must be in excellent condition, very clean, well pressed, and odor free or they will not be accepted. All exhibits must be made by the exhibitor, and only one entry per class will be accepted.



Division chairmen have the authority and responsibility to disqualify items that are dirty, soiled or do not appear to have been made or completed in the last 2 years.

6. It is unethical to exhibit items that have been previously exhibited or made by anyone other than the exhibitor, and such items will be disqualified and removed from exhibition.

7. NO duplicate items will be accepted in miscellaneous categories. Items may be entered as miscellaneous only if they do not qualify in listed classes.
8. All exhibitors are required to place cell phone numbers on entry cards along with home phone numbers to provide better communication.
9. Due to limited display space, items should not measure larger than 30 inches wide by 30 inches high unless foldable for display. Any questions, please call the Extension Office at 979-865-2072 during normal business hours prior to October 8, 2021.



*****Please check all rules prior to entering.**

ENTRY FEES

An entry fee of \$1.00 per item will be charged for 1-10 items, for 11-50 items \$10.00 per exhibitor will be charged. Maximum of 50 items per exhibitor.

Adults may have an additional ten (10) items in the Adult Flower Show.

CHECK IN PROCEDURES FOR ALL DEPARTMENTS

(Youth and Adult)

Check In Date	Check In Time
Monday, October 11	10:00 a.m. – 7:00 p.m.

1. All articles will be accepted from 10:00 a.m. to 7:00 pm on Monday, October 11, 2021.
2. Although precautions will be taken, the Austin County Fair Association and volunteers will not be responsible for items lost, stolen or broken.
3. All articles must be tagged and properly labeled before entrance into the exhibit building.

CHECK OUT PROCEDURES

1. Items on display in the exhibition hall will not be released until 11:00 on Sunday, October 17, 2021. In addition, all items left after 2:00 p.m. on the date of check out will no longer be the responsibility of the Austin County Fair or its affiliated partners.

Items removed prior to scheduled removal time will forfeit all prize money. Exhibitors are welcome to recycle any ribbons or rosettes if they so desire.

2. All exhibit prize money must be collected between 11:00 and 2:00 p.m. on Sunday, October 17, 2021 at the EXPO CENTER. Money not picked up by November 1, 2021 will be forfeited.

SCORING

1. Judging will begin at 10:00 a.m. on Tuesday, October 12, 2021 for all categories.
2. Exhibits will be scored as follows: Grand Champion – 500 points; Reserve Champion – 300 points; Blue Ribbon – 100 points; Red Ribbon – 90 points. Prize money will be paid as follows: Grand Champion - \$15 Reserve Champion - \$10; Blue Ribbon - \$1.25; Red Ribbon - \$.75.
3. One (1) Grand Champion entry and one (1) Reserve Champion entry may be selected from each category in each division in each department if warranted by the judges.
Categories with less than three (3) items will only be awarded placement ribbons and appropriate prize money.
4. **The judge's decision is final.**
5. Judges are requested to write a comment on back of tag when awarding a red ribbon.
6. Grand Champion and Reserve Champion exhibitors will have the opportunity to donate their prize-winning exhibits to the Country Fair Auction on Saturday afternoon. All proceeds

from donated items go to the Austin County Fair Association. Donating to the auction is optional and failure to donate does not forfeit the exhibitor's rosette or prize money. **Baked goods must be at the fairgrounds by 10:00 am on Saturday.** Note: Due to the sentimental or personal value of items, they may be inappropriate for the auction.

All Grand Champion and Reserve Champion baked foods must be baked fresh for Saturday, if donated to the auction.



Exhibitor Drawing!

Sponsored By:

**Austin County Parent Leaders, Anonymous Donors,
Donations in memory of Edward Kramer and Albert
Sodolak.**

Each exhibitor will be placed in a drawing for a \$25.00 gift card for participating in the Home Economics Department.

Youth Department – 8 Gift Cards

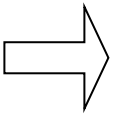
Adult Department - 8 Gift Cards

Winners will be posted at the Country Store!

Please bring your ID with you to claim your prize!

FLORAL DESIGN COMPETITION

The Floral Design Competition is open to Juniors and Seniors. The format allows single entry or teams of 2 exhibitors each to compete on Thursday, October 7, 2021. A maximum of 20 Teams/Single Exhibitors, Juniors and Seniors may participate in the Floral Design Competition. **Entries will be accepted online with payment on the Austin County Fair website.** This will be considered an Austin County Fair project. Questions may be emailed directly to austincofloraldesign@gmail.com. A mandatory orientation meeting will be held on Thursday, October 7, 2021 prior to the start of competition. Entry fees are nonrefundable.



Please check online for Theme, updated information on rules, entry date deadline and fee!!

Competition Format: Each individual/team will compete in the design and execution of a fresh floral arrangement centerpiece and table design, which may include but is not limited to such items as dishes, napkins, additional table coverings, etc. Exhibitors must be in the same age category.

Design Guidelines: Each individual/team should review the design guidelines prior to the Floral Design competition. Exhibitors will have one hour to execute their design.

- **All elements of the entry should reflect or enhance the Austin County fair theme. This year's theme will be announced on the Austin County Fair website. Please go to <https://austincountyfair.com/floral-design> for the theme for this year's contest.**
- Entries are arrangements of fresh floral cut materials and design elements that fit the theme and your design concept.
- All cut materials and table design elements will be provided by the Exhibitor.
- Each exhibitor will be furnished with a workstation, table and tablecloth.

- Entries will be displayed on a 36” round table with a black table covering. The exhibitor is responsible for positioning all elements of their design on the table. Exhibitors are required to use the table covering provided by the Show.
- Entry should be designed to be VIEWED FROM ALL SIDES.
- Each exhibitor must bring their own tools. Tools/Flowers cannot be shared by exhibitors/teams.
- No Advance preparation. Foam will be soaked during orientation.
- Fresh flowers only. Small dry accents can be used (ex. wheat, lotus pods, and cotton)
- Exhibitors are required to bring two (2) copies of their Record book in a folder day of competition.

Permissible tools include:

Glue(s)	Picks
Scissors	Wire cutters
Knife	Tape(s)
Measuring stick	Floral cutters

JUDGING: The show will select qualified judges for each competitive event. Any questions about the judging criteria may be directed to a Committee member.

Judging will be based on the following five categories:

- Design Aesthetics – Line/Form, Color, and Space
- Design Principles – Balance, Proportion, and Unity
- Mechanics/Execution – Neatness and Cleanliness of Design, Proper Coverage of Foam, and Sturdiness of Design
- Creativity and Paperwork

Only judges and Committee members will be allowed inside the competition area while judging is in progress.

No cell phones, watches, ear buds or any type of communication devices are permitted during the competition. Any exhibitor found communicating with anyone outside of the competition could result in immediate disqualification.

Talking or gestures from outside the barrier will not be tolerated and result in immediate disqualification.

Judges decisions are final.

Winning entries will be announced on Thursday, October 7, 2021 after competition is complete.

Exhibitors whose designs do not qualify for Grand or Reserve Champion can enter their design to be judged in the Home Economics department category (4H/FFA Junior, 4H/FFA Senior, or Open Youth Flower Show. Forms and entry tags will be available. There is a \$1.00 fee for entry. If the item is entered on behalf of a team, please choose one person as the point of contact for the entry.

Please note that designs cannot exceed 30 wide x 30 length.

PRIZES INCLUDE:

Senior Division Grand Champion – Buckle
Senior Division Reserve Champion – Buckle
Junior Division Grand Champion – Buckle
Junior Division Reserve Champion – Buckle
Placing Ribbons – 3rd thru 10th

Grand and Reserve Entries must remain on display until Sunday, October 17, 2021. Grand and Reserve winners will be asked to freshen their arrangements on Friday morning before the Youth Auction Sale. Entries must be picked-up by 3:00pm on Sunday, October 17, 2021.



Fair Cup Competition

The Fair Cup competition is an individual exhibitor competition to be held on Thursday, October 7, 2021. A maximum of 20 Exhibitors, Juniors and Seniors may participate in the Fair Cup Competition.

Entries will be accepted online with payment on the Austin County Fair website. Entry fees are nonrefundable.



Competition Format: Each exhibitor will compete in the design and execution of a floral arrangement.

Design Guidelines: Each exhibitor should review the design guidelines prior to the competition. Questions may be directed via email to austincofloraldesign@gmail.com competition chairperson. Exhibitors will also have an opportunity to ask questions at the mandatory pre-event meeting.

- Exhibitors will have one hour to plan and execute their design.
- All materials will be provided by the Fair.
- Exhibitors **MUST** utilize items provided. Each exhibitor will be furnished with materials, including fresh flowers, foliage, container, and decorative elements. The flowers, foliage, and supplies will be the same for each exhibitor.
- Each exhibitor will receive the same type of decorative elements, but the design of each element can be different amongst exhibitors. The exhibitor is responsible for determining which materials they will use in the design of their entry.
- Entries will be displayed on a 20” round table with a black table covering. The exhibitor is responsible for positioning all elements of their design on the table. Exhibitors are required to use the table covering provided by the Fair and no extra adornments are allowed.
- All elements of the entry should reflect or enhance the theme which will be revealed prior to the fair. Each exhibitor’s design will be a sole effort with no assistance from anyone in any manner.

- **No cell phones, watches or other communication devices are allowed in the competition area during the competition.**
- **Any communication with another person outside the barrier will not be tolerated and may result in immediate disqualification from competition.**
- Entry should be designed to be VIEWED FROM ALL SIDES.
- No paints, ribbons, or decorative accessories of any kind may be supplied by the exhibitor. Only the materials supplied by the fair will be allowed.
- Each exhibitor must bring their own tools. Tools cannot be shared by exhibitors.
- Permissible tools include:
 - Floral glues/Adhesives
 - Wire & Wire Cutters
 - Scissors
 - Floral Cutters
 - Knife
 - Floral Tape
 - Glue Guns
- Participants in the Fair Cup competition must check in on Thursday, October 7, 2021 by 8:00 a.m. A mandatory meeting will be held prior to the competition; competition will begin immediately after the meeting.
- Judging will begin during the competition as well as immediately after all exhibitors have completed their design and will be based on the following four categories:
- Design Aesthetics, Line/Form, Color, and Space.
- Design Principles – Balance, Proportion, and Unity.
- Mechanics/Execution – Neatness and cleanliness of design, proper coverage of foam and sturdiness of design.
- Creativity – inspiration with theme and container as well as usage of materials.
- Each exhibitor may receive a copy of their score sheet following the competition.
- Only Fair Cup Floral Design Competition judges, and Committee members, will be allowed inside the competition area while judging is in process.
- **Judges' decisions are final.**
- Buckles will be awarded to the Grand and Reserve Champion exhibitors immediately following the conclusion of judging.



Miniscapes Competition



The Miniscape Competition is open to individuals or teams of exhibitors who will come to Austin County Fairgrounds on Sunday, October 3, 2021 between 10 a.m. and 1:30 p.m. to create their competition entry. Check in and installation must be complete by 1:30 p.m. Entries are limited to the first 20 entry forms received via online entry. **Entries will close at 20 exhibitors or no later than September 1, 2021.** Teams are comprised of two exhibitors. Entry fees will be \$20 per individual or \$40 per team. This will be considered an Austin County Fair project. Entry fees are non-refundable. Please see the ACF website for any updates or additional details at austincountyfair/menu/horticulture

Competition Format: Each individual/team will compete in a design and execution of a miniscape, based on the theme to be released on the ACF website prior to entries opening online. Exhibitors must be 8 years old but not older than 19 years old.

Design Guidelines: Exhibitors should review the guidelines prior to preparing their entry. Questions may be directed to the Horticulture Committee at ACFHorticulture@gmail.com.

- Entries will be constructed in a planter that is approximately 24" deep.
- The planter will be provided by the Fair.
- Each planter will be pre-filled with approximately 20" of dirt.
- Plant materials should be able to withstand sunny, warm conditions.
- Planters will be displayed outside for 14 days.
- No living creatures may be used in the design.
- Entries should be designed to be viewed from all sides.
- Entries may not display signage that names the team's school, school district or FFA/4-H chapter. A sign will be provided upon completion of judging for display on the grounds.
- Exhibitors are responsible for bringing wagons, carts, wheelbarrows, etc. to transport their materials from the parking lot to the exhibit area.

Day of Competition: Check in for Miniscapes will be on the grounds of Austin County Fair on Sunday October 3, 2021 starting at 10 a.m.

Check in, preparation, and construction must be complete by 1:30 p.m.

- Exhibitors will be met by the Horticulture Committee volunteers; the volunteers will assist with check in, direct the exhibitors to the exhibit area.
- Parents and adult leaders may assist with moving in supplies and planter materials to the competition area but must vacate the area once the competition begins.
- Carts/wagons are recommended for transporting materials from a vehicle to the competition area.
- The planting and design of the planter must be performed by the exhibitors ONLY.
- No cell phones, iPads, Watches, or any other type of communication device is allowed in the competition area.
- Paper sketches of design are allowed in the competition area.
- The exhibitor is responsible for providing the plants and any props to be used in the planter.
- The exhibitor is responsible for bringing all tools needed to prepare their planter.
- Entries will be watered and maintained by the Horticulture committee. Exhibitors will not have access to water on the day of installation.
- The Show is not responsible for lost, damaged or dead items. Small items, accessories, etc. should be securely fastened to their container. Items of great sentimental value should not be used.

Judging: The fair will select qualified judges for each competitive event. Any questions about the judging criteria may be directed to the Horticulture Committee.

- Entries will be judged on a 100-point system:
 - Up to 50 points may be awarded for design.
 - Up to 30 points may be awarded for variety of plants used.
 - Up to 20 points may be awarded for staging and quality.
- Winning entries will be announced on October 3, 2021, and winning exhibitors will be recognized.

- Judges decisions are final.

Awards: Buckles will be awarded to the Grand and Reserve Grand Champion winners. Placement ribbons will be given to those placing third thru tenth.

Removal: Exhibitors may remove their plants on Sunday, October 17th from noon to 3 pm. Any plants left after 3 pm will become the property of Austin County Fair. Containers will be moved to their storage location.





Container Plant Competition



The Container Plant Competition is open to individual exhibitors who will come to Austin County Fairgrounds on Sunday, October 3, 2021 between 9 a.m and 10 a.m. to submit their competition entry. Check in is at 9 am. Entries will be completed and accepted via online entry. **Entries will close on September 1, 2021.** Each entry will be \$10.00. One entry per exhibitor. Entry fees are non-refundable. This will not be considered an Austin County Fair project. Please see the ACF website for the updates or additional details under Menu/Horticulture.

Competition Format: Exhibitors will plant and cultivate 3 or more different examples of plant species in an appropriate container. Each project will have a corresponding record book to be submitted with the entry at check in.

General Guidelines: Exhibitors should review the guidelines prior to preparing their entry. Questions may be directed to the Horticulture Committee at email address ACFHorticulture@gmail.com.

- Entries must have been owned and grown by the exhibitor for at least 8 weeks prior to the Show.
- Plants should show evidence of being grown in the container, such as being securely rooted in the soil.
- If plants are found to have been freshly potted or do not stand up during the Show because they were not potted soon enough, the award will be withheld.
- If single elements require replanting during the eight-week period prior to the Show, the exhibitor should document (in writing and with photos) the removed element and the replacement element. The documentation will be part of the Exhibitor Project Log. (See the “Exhibitor Project Log” section below).
- Entries should be complete upon arrival to the Show.
- Entries must be completely set up by 10:00 am. on Sunday, October 3, 2021.
- Exhibitors may not receive assistance from anyone during the set up.
- If the exhibitor is unable to deliver his/her entry, they may allow a designee, to place their entry on the table.

- The entry will be disqualified if, at the sole discretion of the Show, it is determined that the designee has altered the design in any manner.
- Entries should be designed to be viewed from all sides.
- Entries should feature 3 or more different plant species per container.
- Plant selection is at the exhibitor's discretion.
- Plants may belong to any species.
- Plants must be healthy, free of disease, and bug free.
- Plants are the only living items that may be included with the entry – no other living items are permitted (e.g., animals, reptiles, bugs). Vivarium's are excluded from the competition.
- Plants should be clearly and attractively potted in a container that is suitable for tabletop display and able to be watered without leaks.
- Select a container that enhances the creative presentation of the entry.
- If submitting a container grown plant, double potting is permitted, provided natural top dressing is used and the inside of the container is not visible. Top dressing must not float when watered.
- If submitting a terrarium, double potting is not permitted.
- If submitting a terrarium, the container may be open air or closed.
- Leaf polish or other commercial foliage enhancers are not permitted.
- Accessories are permitted; however, emphasis should be on the creative use of natural, fresh planted materials rather than of accessories to create a scene.
- Containers must fit on the table provided for display.
- Entries must not exceed a size of 30" wide x 30" deep.
- Entries may not exceed 50 lbs.

Delivery of Entries: Entries must be delivered to the Austin County Fair on Sunday, October 3, 2021 between 9 a.m. and 10 a.m. Exhibitors must check in at each competition table that they have entered. Exhibitors will access the Austin County Fairgrounds through Gate 1. Entries must be completely set up by 12:15 p.m.

Exhibitor Project Log: Each exhibitor must keep an Exhibitor Project Log that will be submitted the day of the competition at the check in table. Questions may be directed to the Horticulture Committee at ACFHorticulture@gmail.com

- Each exhibitor must maintain and submit a project log for each entry, using the Exhibitor Project Log available on the website at [austincountyfair/menu/horticulture/project log](http://austincountyfair/menu/horticulture/project%20log).
- Other types of exhibitor logs will not be accepted. Entries without the approved ACF Exhibitor Project Log shown will be disqualified.
- The Exhibitor Project Log is assessed for content, not creativity and should include:
 - A brief narrative describing the source of inspiration for the entry and the steps taken during the creative process (e.g. selection and sourcing of plant materials).
 - A minimum of ten photographs taken during the cultivation of the entry.
 - Photographs must be printed and included with the log.
 - A list of plant materials used, including the genus, specie, common name, cultivar or variety.
 - A timeline journaling/documenting the planting and maintenance activity.
 - ACF will not print logs for exhibitors. Project logs need to be complete, bound in a folder and ready to be turned in when exhibitors arrive at the check-in table.

Judging: The Show will select qualified judges for each competitive event. Any questions about the judging criteria questions may be directed to the Horticulture committee at email address ACFHorticulture@gmail.com.

- Entries will be judged on the day of arrival.
- Entries will be judged on a 100-point system:
 - Up to 45 points may be awarded for design.
 - Up to 40 points may be awarded for variety of plants used.
 - Up to 10 points may be awarded for staging and quality.
 - Up to 5 points may be awarded for the completion of Exhibitor Project Log.
- Judges may make notes in the Project Log.

- Only judges, Horticulture Committee members will be allowed inside the competition area while judging is in progress.
- Judges decisions are final.
- Winning entries will be announced on October 3, 2021, and winning exhibitors will be recognized.
- Exhibitors will be asked to bring their projects back to the ACF on Sunday, October 10th to be displayed during the fair.
- Grand and Reserve Champions will have the opportunity to donate their prize-winning exhibits to the Country Fair Auction on Saturday afternoon. All proceeds from donated items go to the Austin County Fair Association. Donating to the auction is optional. Note: Due to the sentimental or personal value of items, they may be inappropriate for the auction.

Prizes: Grand and Reserve Champion Container Plants will be awarded Banners



YOUTH DEPARTMENT

RULES & AWARDS

San Bernard Electric Cooperative will award trophies to High Point Exhibitors in each division in the **4-H Junior, Junior FFA, Open Youth, Senior 4-H, FCCLA, and Senior FFA Departments**. An exhibitor may receive only one trophy per year. Trophies for each specific division (canned foods, baked goods, clothing, home improvement, flower show and photography) will be awarded to the same individual only once. In case of a tie, the winner will be determined by the number of his/her Grand, Reserve, blue, red ribbons and the total number of entries. If a tie remains, the final tie breaker will be a flip of the coin,

Monetary awards will be given to 4-H Junior/Junior FFA and Senior 4-H/FCCLA/Senior FFA members by Austin County Parent Leaders, and Bellville FCCLA.

4-H JUNIOR/JUNIOR FFA DEPARTMENT

A monetary award will be given to the Overall High Point Exhibitors. Three awards will be made: 1st Place - \$50; 2nd Place - \$30; 3rd Place - \$20. Overall high point exhibitors may receive the first-place award only once.

RULES AND REGULATIONS

1. All entries are subject to the General Rules of the Austin County Fair.
2. The 4-H Junior/Junior FFA Department is open to any Austin County 4-H or Junior FFA member who resides in Austin County or is enrolled in an elementary or junior high school during the 2021/2022 school year.
3. Due to limited space please see rule #9 in general rules on page 7.
4. **There is an explanation powerpoint to provide guidance on completing entry cards and tags.**

4-H SENIOR/FCCLA/SENIOR FFA DEPARTMENT

SPECIAL AWARDS

The Bellville FCCLA Chapter will donate monetary awards to the Overall High Point exhibitor. Overall High Point exhibitors may receive the first-place award only once. This award will not be made to the individual more than once.

RULES AND REGULATIONS

1. All entries are subject to the General Rules of the Austin County Fair.
2. The 4-H Senior, FCCLA and Senior FFA Department is open to any Austin County 4-H member or FCCLA member or Senior FFA member who resides in Austin County or is enrolled in an Austin County high school during the 2021/2022 school year or at least 14 years old, but not older than 19.
3. Due to limited space please see rule #9 in general rules on page 7.
4. **There is an explanation powerpoint to provide guidance on completing entry cards and tags.**

OPEN YOUTH DEPARTMENT

SPECIAL AWARDS

A monetary award will be presented to the Overall Highpoint Exhibitor in memory of Nelson Kieke. This award will not be made to the individual more than once.

RULES AND REGULATIONS

1. All entries are subject to the General Rules of the Austin County Fair.

2. The Open Youth Department is open to any Austin County youth who resides in Austin County or is enrolled in an Austin County school during the 2021/2022 school year. 4-H members, FFA members or FCCLA members are not eligible to participate in this department.
3. Exhibitors must indicate their age on each tag.
4. Due to limited space please see rule #9 in general rules on page 7.
5. **There is an explanation powerpoint to provide guidance on completing entry cards and tags.**



YOUTH DEPARTMENTS

4-H Junior, Junior FFA, 4-H Senior/FCCLA, FFA and Open Youth

4-H Junior/Junior FFA Department	Yellow Cards
4-H Senior/FCCLA/Senior FFA Department	Green Cards
Open Youth Department	Lavender Cards

CLOTHING AND NEEDLEWORK DIVISION CATEGORY "A"

Due to limited space please see rule #9 in general rules on page 7.

CONSTRUCTED ITEMS

A1. Blouse	A15. Skorts
A2. Capris	A16. Slacks
A3. Coat/Shawl/Poncho	A17. Sport Outfit
A4. Costume	A18. Suit
A5. Dress – Casual	A19. Swimsuit Cover-Up
A6. House Robe	A20. Vest
A7. Jacket	A21. Apron
A8. Jumper	A22. Pillow
A9. Miscellaneous	A23. Pillowcase
A10. Night Gown or Pajamas	A24. Throw
A11. Shirt	A25. Tote Bag
A12. Shorts	A26. Towels
A13. Shorts & Tops	A27. Wall Hanging, Stitched
A14. Skirt	

DECORATED GARMENTS

A28. Denim – Decorated	A35. Sweatshirt - Decorated
A29. Denim – Painted	A36. Sweatshirt – Painted
A30. Jacket	A37. T-Shirt – Appliquéd
A31. Jeans – Decorated	A38. T-Shirt – Decorated
A32. Miscellaneous Garment	A39. T-Shirt – Painted
A33. Skirt – Decorated	A40. Vest - Decorated
A34. Sweat Shirt – Appliquéd	

ACCESSORIES

A41. Bandana	A50. Miscellaneous Accessory
A42. Barrett/Hair Clip (decorated)	A51. Necklace
A43. Belt	A52. Pin
A44. Bracelet	A53. Purse
A45. Earrings	A54. Ring
A46. Hat (decorated)	A55. Scarf
A47. Head Band	A56. Sun Visor/Cap (decorated)
A48. Key Chain	A57. Tote Bag (decorated)
A49. Leather Accessory	

NEEDLEWORK

A58. Appliquéd Article	A65. Machine Embroidered Article
A59. Counted Cross Stitch Article	A66. Miscellaneous
A60. Crocheted Article	A67. Plastic Canvas Article
A61. Cross Stitch Article	A68. Towels
A62. Embroidered Article	A69. Sequined Kits
A63. Hook or Latch Item	
A64. Knitted Article	

HOME IMPROVEMENT DIVISION

CATEGORY "B"

Due to limited space please see rule #9 in general rules on page 7.

HOME ACCESSORIES

B1. Album/Book (decorated)	B18. Lamp Shade (decorated)
B2. Basket (decorated)	B19. Miscellaneous
B3. Bird House or Feeder	B20. Patriotic Item
B4. Box (decorated)	B21. Picture Frame
B5. Broom (decorated)	B22. Potholder
B6. Clipboard (decorated)	B23. Potpourri Item
B7. Christmas Doorknob Cover	B24. Puzzle Art
B8. Christmas Item – Other	B25. Refrigerator Magnet
B9. Christmas Ornament	B26. Stenciled Item
B10. Christmas Tree Skirt	B27. Stuffed Article (no toy)
B11. Coat Hanger (covered)	B28. Stuffed Toy
B12. Decoupage Item	B29. Thanksgiving Item
B13. Easter Item	B30. Valentine's Item
B14. Flower Arrangement	B31. Wall Hanging
B15. Flowerpot (decorated)	B32. Woven Basket
B16. Halloween Item	B33. Wreath (decorated)
B17. Imitation Glass	

CATEGORY "C"

Due to limited space please see rule #9 in general rules on page 7.

CRAFTS

- | | |
|---------------------------------------|----------------------------|
| C1. Beaded Item | C13. Model |
| C2. Bookmark | C14. Paint by Number |
| C3. Clay Item | C15. Painting on Glass |
| C4. Clay Object | C16. Paper Art |
| C5. Educational Exhibits (No posters) | C17. Plaster of Paris Item |
| C6. Foam Art | C18. Pom-pom Item |
| C7. Fusible Bead Work | C19. Religious Article |
| C8. Hoop Item | C20. Sequined Article |
| C9. Leather Craft | C21. Stone or Rock Art |
| C10. Lego's | C22. String Art |
| C11. Magnet | C23. Candles |
| C12. Miscellaneous | C24. Canvas Painting |
| | C25. Acrylic Item |
| | C26. Metal Item |

CATEGORY "D"

Due to limited space please see rule #9 in general rules on page 7.

WOODWORK

- | | |
|---------------------------|------------------------|
| D1. Constructed Wood Item | D7. Stenciled Item |
| D2. Decorated Wood Item | D8. Wall Hanging |
| D3. Holiday Article | D9. Wooden Box |
| D4. Miscellaneous | D10. Wooden Craft Item |
| D5. Painted Wood Item | D11. Yard Sign |
| D6. Religious Item | |

***no life size furniture**



FLOWER SHOW/SPECIMEN DIVISION

Name of plant must be entered on entry card. All plants must have been owned and cared for by the exhibitor at least 90 days prior to the Fair. All containers must be clean and attractive. Plants should be watered no later than 24 hours before exhibition. Plants and containers may weigh no more than 15 pounds. A scale will be available, and the 15 pounds rule will be enforced. No black pots, double pots or wrappings.

***Categories less than three (3) entries will receive placement ribbon only.**

CATEGORY "E"

FLOWERING POT PLANTS

E1. African Violet	E6. Hibiscus
E2. Begonia	E7. Impatiens
E3. Chrysanthemum	E8. Miniature Rose
E4. Exotic	E9. Ornamental Pepper
E5. Geranium	E10. Miscellaneous

FOLIAGE POT PLANTS

E11. Caladium	E19. Peperomia
E12. Closet Plant	E20. Philodendron
E13. Coleus	E21. Rubber Plant
E14. Croton	E22. Schefflera
E15. Dieffenbachia	E23. Spider Plant
E16. Fern	E24. Tropical Plant
E17. Ivy	E25. Wandering Jew
E18. Miscellaneous	E26. Arrowhead Ivy

CACTI AND SUCCULENTS

E27. Aloe Vera	E31. Kalanchoe
E28. Cacti	E32. Miscellaneous
E29. Hen and Chickens	E33. Sansevieria (Snake Plant or Mother-in-Law Tongue)
E30. Jade	

CONTAINER GROUPING

E34. Dish Garden	E36. Miscellaneous
E35. Terrarium	

Floral Design

E37. Buffet Table	E39. Coffee/Registration
E38. Memorial Piece	E40. Miscellaneous

Specimen - Cuttings, Fruits & Vegetables

Any cut specimen is to be displayed in a clear glass or clear plastic bottle appropriate to the size of the specimen.

Fruits and vegetables are to be displayed on appropriate size paper plate. Minimum of 3 pieces per entry per item.

E41. Misc. Specimen	E46. Fruits (3)
E42. Rose Specimen	E47. Vegetables (3)
E43. Annual Specimen	E48. Misc. Fruits or Vegetables (3)
E44. Perennial Specimen	E49. Herbs (Placed in a container)
E45. Bulbs, Corms, Tubera, Rhizomes, Specimen	

BAKED GOODS DIVISION

Due to limited space please see rule #9 in general rules on page 7
Cakes, breads and pies must have two identical, completed entry tags for each item. Baked cakes and breads will be judged as the whole product. Other baked items must be placed on a 6" disposable plate and placed in a clear plastic zip lock bag to be accepted. No decorations such as ribbons, doilies, etc.

After judging, all cakes and breads should be picked up by 5:00 p.m. on Tuesday, October 12, 2021. Grand and Reserve winners will leave ¼ of the cake or bread for display, you may pick up the remaining portion. All cakes and breads not picked up by 5:00 p.m. will be disposed of. **All cakes must be on a sturdy, disposable sheet of cardboard no larger than 1" from the edge of the decorated item which has been covered with aluminum foil or white paper.** Glass plates will not be accepted.

The fair is not responsible for any damage due to climate control.

If siblings are competing against one another in the same division (example – a brother and sister both bake brownies in the 4-H Junior Division), it would be to their advantage to modify the recipe if possible. For example, if one enters a brownie, the other should enter brownies with nuts. By doing this, the entries will be easier to distinguish.

CATEGORY “F”

Due to limited space please see rule #9 in general rules on page 7.

BREADS (Mini Loaf Pans are Allowed)

F1. Coffee Cake	F8. Miscellaneous
F2. Cornbread – 3 pieces	F9. Muffins – 3 pieces
F3. Drop Biscuits – 3 pieces	F10. Plain Rolls – 3 pieces
F4. Grain/Cereal Muffins – 3 pieces	F11. Quick Breads
F5. Kolaches – 3 pieces	F12. Sweet Rolls – 3 pieces
F6. Loaf Bread	F13. Yeast Bread
F7. Mexican Cornbread – 3 pieces	

CAKES

F14. Angel Food Cake	F19. Plain, Un-iced Cupcake
F15. Chiffon Cake	F20. Sheet Cake
F16. Jelly Roll	F21. 2 or 3 Layer Cake
F17. Loaf Cake	F22. Upside Down Cake
F18. Miscellaneous	F23. Bundt Cake
	F24. Cupcakes (3)

COOKIES

F25. Bar Cookies – 3	F29. Refrigerator Cookies – 3
F26. Brownies – 3	F30. Rolled Cookies – 3
F27. Dropped Cookies – 3	F31. Unbaked Cookies - 3
F28. Miscellaneous – 3	

CANDY

F32. Divinity – 3	F35. Molded Candy – 3
F33. Fudge – 3	F36. Peanut Brittle – 3
F34. Miscellaneous – 3	F37. Praline – 3

DECORATED BAKED FOODS (Please note: Do not cut decorated items. They are judged as a whole product and on appearance.)

F38. Cake	F41. Cupcake -3
F39. Candy -3	F42. Cut-Up Cake
F40. Cookies -3	F43. Miscellaneous

PIES (Pies requiring refrigeration or freezing will NOT be accepted.)
Entries should be in a disposable pan in a zipper plastic bag.

F44. Apple	F53. Miscellaneous Nut
F45. Apricot	F54. Peach
F46. Blackberry	F55. Peanut
F47. Blueberry	F56. Pear
F48. Cherry	F57. Pecan
F49. Cobbler	F58. Raisin
F50. Dewberry	F59. Strawberry
F51. Dried Fruit	F60. Walnut
F52. Miscellaneous Fruit	F61. Miscellaneous Pie

CANNED FOODS DIVISION

All canned foods do not need a label, just an entry tag. The level of jar contents must be ¼” to ½” from the top of the jar lid. Low acid canned food items (items in pressure canner) need to have 1” head-space. All jars must be clean and shiny with rings removed. Canning can be done in only a standard canning jar (Mason, Ball, Kerr, etc.) – salad dressing or other such jars are not allowed. Fruit, vegetables, fruit pickles, and vegetable pickles – pieces in jars should be uniform in size and product should not be floating. Jelly must be firm, but not hard or with visible sugar crystals. It must pull away clean from the side of the jar and still hold its shape. Fruit or vegetable juice must be bright and have a clear color. It should not be cloudy. Quality canned items do not have air pockets or bubbles among the vegetable or fruit pieces.***Categories with less than three (3) entries will receive placement ribbons only.**

CATEGORY “G”

VEGETABLES

G1. Beets	G6. Okra and Tomatoes
G2. Carrots	G7. Sauerkraut
G3. Corn	G8. Squash
G4. Green Snap Beans	G9. Tomatoes
G5. Miscellaneous	G10. Vegetable Juice

FRUITS

G11. Berries	G15. Peaches
G12. Figs	G16. Pears
G13. Fruit Juice	G17. Plums
G14. Miscellaneous	

PRESERVES, JELLIES and JAMS

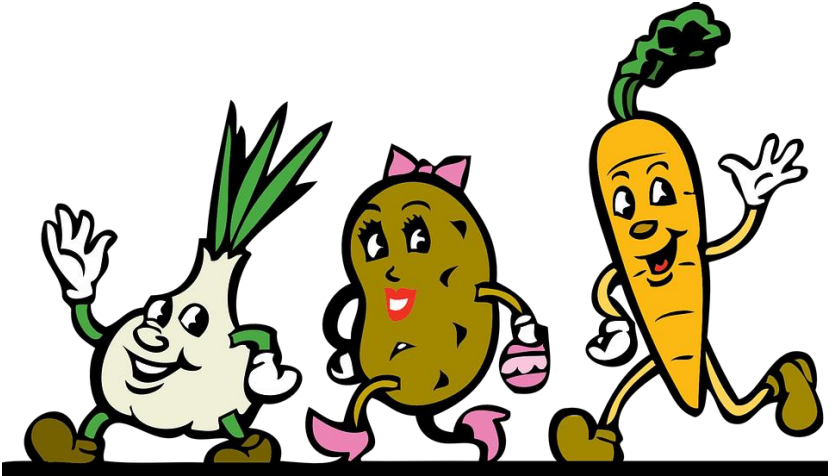
G18. Apple Jam	G31. Peach Jam
G19. Apple Jelly	G32. Peach Jelly
G20. Berry Jam	G33. Peach Preserves
G21. Berry Jelly	G34. Pear Jam
G22. Dewberry Jam	G35. Pear Preserves
G23. Dewberry Preserves	G36. Plum Jam
G24. Fig Jam	G37. Plum Jelly
G25. Fig Preserves	G38. Plum Preserves
G26. Grape Jam	G39. Strawberry Jam
G27. Grape Jelly	G40. Strawberry Preserves
G28. Misc. Jam – No Duplicates	G41. Tomato Jam
G29. Misc. Jelly – No Duplicates	G42. Tomato Preserves
G30. Misc. Preserves – No Duplicates	

PICKLES AND RELISHES

- | | |
|--|--------------------------|
| G43. Bread & Butter Pickles | G54. Miscellaneous Sauce |
| G44. Catsup | G55. Pepper Relish |
| G45. Chili Sauce | G56. Picanté Sauce |
| G46. Chow Chow | G57. Pickled Beans |
| G47. Corn Relish | G58. Pickled Beets |
| G48. Dill Pickles | G59. Pickled Okra |
| G49. Hot Pickles | G60. Pickled Peaches |
| G50. Miscellaneous Pickles | G61. Pickled Pears |
| G51. Miscellaneous Pickled Fruit | G62. Picked Squash |
| G52. Miscellaneous Pickled
Vegetables | G63. Sweet Pickles |
| G53. Miscellaneous Relish | G64. Tomato Sauce |

MISCELLANEOUS (Entry may be exhibited in appropriate container or jar and does not need to be in sealed jars.)

- | | |
|-------------------------------|----------------------------|
| G65. Cereal Snack Mix | G72. Homemade Pasta |
| G66. Cooked Cheese | G73. Homemade Soap |
| G67. Dehydrated Fruit | G74. Homemade Syrup |
| G68. Dehydrated Vegetables | G75. Honey (strained) |
| G69. Dehydrated Miscellaneous | G76. Honey in Comb (quart) |
| G70. Flavored Popcorn | G77. Miscellaneous |
| G71. Homemade Noodles | G78. Spiced Nuts |





PHOTOGRAPHY DIVISION



1. All entries must be in the form of color or black & white, 8"x10" prints mounted on a foam or mat board of the exact dimension 8"x10". No frames allowed.
2. The photo may be cropped for effect but the dimensions of 8"x10" must remain.
3. Only one entry may be submitted per class. No exceptions. Prints from film or digital cameras are accepted in all classes.
4. There must be at least three (3) photos entered in the "Single Black & White Print" category and at least three (3) photos entered in the "Single Color Print" category in order to be awarded premium money. **(Categories with less than three (3) entries will only be awarded placement ribbons).**

CATEGORY "H"

SINGLE COLOR PRINT

H1. Animal Domestic	H9. Creative Effects (Enhanced)
H2. Animal Wildlife	H10. Motion/Action
H3. Details & Macros	H11. Food
H4. Elements of Design	H12. Leading Line
H5. Miscellaneous/Catch All	H13. Long Exposure
H6. Nature & Landscape	H14. Shadow/Silhouette
H7. People	
H8. Plant/Flora	

SINGLE BLACK & WHITE PRINT

H15. Animal Domestic	H23. Creative Effects (Enhanced)
H16. Animal Wildlife	H24. Motion/Action
H17. Details & Macros	H25. Food
H18. Elements of Design	H26. Leading Line
H19. Miscellaneous/Catch All	H27. Long Exposure
H20. Nature & Landscape	H28. Shadow/Silhouette
H21. People	
H22. Plants/Flora	



YOUTH QUILT SHOW

“CATEGORY J”



QUILTS and QUILTED ITEMS – (hand quilted finished, Any Size)

J1. Appliqué	J17. Paper Pieced
J2. Baby quilt	J18. Patchwork
J3. Bed runner	J19. Placemats
J4. Cathedral Window	J20. Pre-printed/Fabric Panel
J5. Crazy quilt	J21. Quillow
J6. Crib quilt	J22. Quilted Fashion Accessory
J7. Cross Stitch, Embroidered	J23. Quilted Wearable
J8. Denim	J24. Recycled
J9. Group quilt (3 or More)	J25. Scrappy quilt
J10. Hand Embroidered	J26. String quilt
J11. Holiday	J27. T-Shirt quilt or item
J12. Lap quilt	J28. Table runner
J13. Machine Embroidered	J29. Tacked/Tied
J14. Miniature quilts	J30. Trapunto
J15. Miscellaneous	J31. Two-Color quilt
J16. Modern	J32. Wall hanging
	J33. Whole Cloth quilt
	J34. Yo-Yo Item

QUILTS and QUILTED ITEMS – (Machine quilted, Any Size)

J35. Appliqué	J52. Paper Pieced
J36. Baby quilt	J53. Patchwork
J37. Bed runner	J54. Placemats
J38. Cathedral Window	J55. Pre-printed/Fabric Panel
J39. Crazy Quilt	J56. Quilted Fashion Accessory
J40. Cross Stitch, Embroidered	J57. Quilted wearable
J41. Crib quilt	J58. Quillow
J42. Denim	J59. Raw-Edged Quilt
J43. Group Quilt (3 or More)	J60. Recycled
J44. Hand Embroidered	J61. Scrappy Quilt
J45. Holiday	J62. String Quilt
J46. Lap quilt	J63. T-Shirt Quilt
J47. Machine Embroidered	J64. Table runner
J48. Miniature quilts	J65. Tacked/Tied
J49. Miscellaneous (small)	J66. Trapunto
J50. Miscellaneous (large)	J67. Two-Color Quilt
J51. Modern	J68. Wall hanging
	J69. Whole Cloth Quilt
	J70. Yo-Yo Item

ADULT DEPARTMENT RULES

EXTENSION EDUCATION DEPARTMENT

RULES AND REGULATIONS

*Every exhibitor in this department must be an **Active** member of an Austin County Extension Education Club. Extension Education members are not eligible to enter in the Open Department.*

1. A special gift will be given to the High Point exhibitor. The award is donated by the Austin County EE Association. Previous winners are eligible after five years. High Point winners from 2015 or earlier ARE eligible for the 2021 High Point Award. Winners from 2016 through 2019 are NOT eligible for the 2021 award.
2. In case of a tie, the winner will be determined on the basis of the most Grand, Reserve, Blue and Red Ribbons and total number of entries. If a tie remains, the final tie breaker will be a flip of the coin.
3. An appropriate award will be presented to each of the Overall High Point exhibitors in the Needlework, Clothing, Handicraft, Canning, Photography and Baking Divisions. Winners from 2015 or earlier are eligible for the 2021 High Point Award. Winners from 2016 through 2019 are NOT eligible for the 2021 award.
4. Due to limited space please see rule #9 in general rules on page 7
5. **There is an explanation powerpoint to provide guidance on completing entry cards and tags.**

OPEN ADULT DEPARTMENT

This department is open to any adult who resides in Austin County, except Extension Education Club members.

1. A special gift will be given to the Overall High Point exhibitor. The award is donated by the Bluebonnet Area Quilt Guild. Winners from 2015 or earlier are eligible for the 2021 High Point Award. Winners from 2016 through 2019 are NOT eligible for the 2021 award.

In case of a tie, the winner will be determined on the basis of the most Grand, Reserve, Blue, and Red Ribbons and total number of entries. If a tie remains, the final tie breaker will be a flip of the coin,

2. An appropriate award will be presented to each of the High Point exhibitors in the Needlework, Clothing, Handicraft, Canning, Baking and Photography Divisions. Winners from 2015 or earlier are eligible for the 2021 High Point Award. Winners from 2016 through 2019 are NOT eligible for the 2021 award.
3. Due to limited space please see rule #9 in general rules on page 7



ADULT DEPARTMENTS

Open Adult and Extension Education

Open Adult Department

White Cards

Extension Education Department

Pink Cards

CLOTHING DIVISION

CATEGORY "A"

Due to limited space please see rule #9 in general rules on page 7.

Constructed or Decorated Items and Accessories

- | | |
|--------------------------------|-----------------------------|
| A1. Apron | A24. Pants or Slacks |
| A2. Bandana | A25. Pants Skirt (Culottes) |
| A3. Beaded Pin | A26. Poncho or Cape |
| A4. Belt | A27. Purse |
| A5. Blazer or Jacket | A28. Recycled Garment |
| A6. Blouse | A29. Scarf |
| A7. Bonnet | A30. Shawl |
| A8. Boy's Garment | A31. Shirt |
| A9. Bracelet | A32. Shoes |
| A10. Capris | A33. Shorts |
| A11. Costume | A34. Skirt (long or short) |
| A12. Dress | A35. Socks |
| A13. Earrings | A36. Special Occasion Dress |
| A14. Girl's Garment | A37. Sports Outfit |
| A15. Gown (formal or informal) | A38. Sports Shirt |
| A16. Hair Accessory | A39. Suit (dress or pant) |
| A17. Hat or Cap | A40. Sweatshirt |
| A18. House Robe | A41. Swimsuit |
| A19. Infant Apparel | A42. Swim Suit Cover-up |
| A20. Infant Bedding | A43. Tote bag |
| A21. Jumper Dress | A44. Vest |
| A22. Miscellaneous | A45. Western Shirt |
| A23. Necklace | |

FIBER ARTS

CATEGORY "B"

Due to limited space please see rule #9 in general rules on page 7.

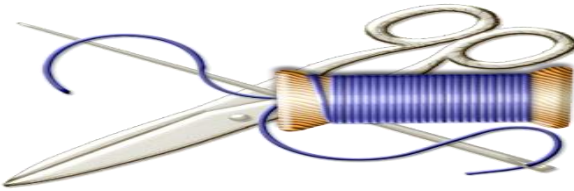
EMBROIDERY (embroidery, needlepoint, and counted cross stitch, hand or machine)

B1. Appliqué Stitchery	B31. Landscape Wall Hanging
B2. Apron	B32. Luncheon Cloth or Set
B3. Book Cover	B33. Machine Embroidery
B4. Bookmark	B34. Magnets
B5. Candle Wicking	B35. Miscellaneous
B6. Chicken Scratch	B36. Napkin Set
B7. Christmas Card	B37. Needle Punch
B8. Christmas Item	B38. One Color Work
B9. Christmas Stocking	B39. Original Design
B10. Christmas Wall Hanging	B40. Ornaments
B11. Clocks	B41. Pillow
B12. Clothing Article	B42. Pillowcases/Sham (1 or 2)
B13. Creative Stitchery	B43. Placemats
B14. Creative Stitchery Quotes	B44. Poems
B15. Crewel	B45. Prayers
B16. Cut Work	B46. Rug
B17. Digitized Embroidery	B47. Silk Ribbon Embroidery
B18. Dish Towel	B48. Sampler
B19. Fashion Accessory	B49. Shadow Embroidery
B20. Floral Wall Hanging	B50. Smocked Article
B21. Framed Item	B51. Stamped Cross Stitch
B22. Greeting card	B52. Still Life Picture
B23. Handbag (Purse)	B53. Tablecloths
B24. Hemstitching	B54. Thread Painting
B25. Holiday Item (not Christmas)	B55. Topiary (standing/weighted needlepoint)
B26. Holiday Wall Hanging	B56. Tote
B27. Household Items	B57. Towel
B28. Jar Covers	
B29. Jar Lids	
B30. Lace Darning	

CROCHET, TATTING AND KNITTED CATEGORY (starched or unstarched)

Due to limited space please see rule #9 in general rules on page 7.

B58. Adult apparel	B82. Lace Edge (1yd, any kind)
B59. Afghan	B83. Layette accessories
B60. Angel	B84. Luncheon cloth or set
B61. Baby Blanket	B85. Miscellaneous
B62. Bedspread	B86. Miscellaneous Crochet item
B63. Bib	B87. Miscellaneous Knitted Item
B64. Buffet or Vanity set	B88. Miscellaneous Tatted Item
B65. Cap	B89. Pillow
B66. Centerpiece (under 14")	B90. Placemats
B67. Chair set	B91. Poncho or Cape
B68. Child Apparel	B92. Potholder
B69. Christmas Ornament	B93. Purse
B70. Collar	B94. Recycled fibers
B71. Doll clothes	B95. Rug
B72. Doily (under 14")	B96. Rag Knitted Item
B73. Edging or Insertions (1yd)	B97. Scarf
B74. Fashion Accessory	B98. Snowflake
B75. Filet Crochet	B99. Sweater
B76. Hairpin Lace	B100. Stuffed Doll
B77. Headpiece	B101. Tablecloth
B78. Holiday Items	B102. Toy
B79. Home Accessory	B103. Tree Top Ornament
B80. House Shoes	B104. Vest
B81. Infant Apparel	



**QUILTS and QUILTED ITEMS – (hand quilted finished,
Any Size)**

B105. Appliqué	B121. Paper Pieced
B106. Baby quilt	B122. Patchwork
B107. Bed runner	B123. Placemats
B108. Cathedral Window	B124. Pre-printed/Fabric Panel
B109. Crazy Quilt	B125. Quilted Fashion Accessory
B110. Crib quilt	B126. Quilted wearable
B111. Cross Stitch, Embroidered	B127. Recycled
B112. Denim	B128. Scrappy Quilt
B113. Group Quilt (3 or More)	B129. String Quilt
B114. Hand Embroidered	B130. T-Shirt Quilt or item
B115. Holiday	B131. Table runner
B116. Lap quilt	B132. Tacked/Tied
B117. Machine Embroidered	B133. Trapunto
B118. Miniature quilts	B134. Two-Color Quilt
B119. Miscellaneous	B135. Wall hanging
B120. Modern	B136. Whole Cloth Quilt
	B137. Yo-Yo Item

**QUILTS and QUILTED ITEMS – (Machine quilted, finished
Double size or larger)**

B138. Appliqué	B155. Paper Pieced
B139. Baby quilt	B156. Patchwork
B140. Bed runner	B157. Placemats
B141. Cathedral Window	B158. Pre-printed/Fabric Panel
B142. Crazy quilt	B159. Quilted Fashion Accessory
B143. Cross Stitch, Embroidered	B160. Quilted wearable
B144. Crib quilt	B161. Quillow
B145. Denim	B162. Raw-Edged quilt
B146. Group quilt (3 or More)	B163. Recycled
B147. Hand Embroidered	B164. Scrappy quilt
B148. Holiday	B165. String quilt
B149. Lap quilt	B166. T-Shirt quilt
B150. Machine Embroidered	B167. Table runner
B151. Miniature quilts	B168. Tacked/Tied
B152. Miscellaneous (small)	B169. Trapunto
B153. Miscellaneous (large)	B170. Two-Color quilt
B154. Modern	B171. Wall hanging
	B172. Whole Cloth quilt
	B173. Yo-Yo Item

QUILTS and QUILTED ITEMS – (Machine quilted, Twin size or smaller)

B174. Appliqué	B191. Paper Pieced
B175. Baby quilt	B192. Patchwork
B176. Bed runner	B193. Placemats
B177. Cathedral Window	B194. Pre-printed/Fabric Panel
B178. Crazy quilt	B195. Quilted Fashion Accessory
B179. Cross Stitch, Embroidered	B196. Quilted wearable
B180. Crib quilt	B197. Quillow
B181. Denim	B198. Raw-Edged quilt
B182. Group quilt (3 or More)	B199. Recycled
B183. Hand Embroidered	B200. Scrappy quilt
B184. Holiday	B201. String quilt
B185. Lap quilt	B202. T-Shirt quilt
B186. Machine Embroidered	B203. Table runner
B187. Miniature quilts	B204. Tacked/Tied
B188. Miscellaneous (small)	B205. Trapunto
B189. Miscellaneous (large)	B206. Two-Color quilt
B190. Modern	B207. Wall hanging
	B208. Whole Cloth quilt
	B209. Yo-Yo Item

HANDICRAFT DIVISION

CATEGORY “C”

Due to limited space please see rule #9 in general rules on page 7.

If the item consists of an original design by the exhibitor, please note “Original Design” on the entry tag.

CLOTH OR YARN ITEMS

Due to limited space please see rule #9 in general rules on page 7.

C1. Animal Doll	C14. Latch Hook Pillow
C2. Bed Runner	C15. Miscellaneous Item
C3. Book Cover (decorated)	C16. Pillow
C4. Braided Rug	C17. Pillowcases/Shams (1 or 2)
C5. Coat Hanger (decorated)	C18. Plastic Canvas
C6. Decorated Pillow	C19. Pre-printed Cloth Item – Sewn
C7. Doll	C20. Puppets
C8. Fabric Wall Hanging	C21. Rag Rug
C9. Felt Item	C22. Rug
C10. Hand-Stitched	C23. Seasonal Doll
C11. Holiday Doll	C24. Seasonal Item
C12. Holiday Item	C25. Soft Sculpture
C13. Holiday Stocking	C26. Stuffed Animal

C27. Home Item	C32. Stuffed Miscellaneous
C28. Hot Dish Carrier	C33. Table Runner
C29. Jewelry	C34. Yarn Item
C30. Kitchen Item	C35. Yo-Yo Items
C31. Latch Hook	

SILK FLOWERS AND WREATHS

Due to limited space please see rule #9 in general rules on page 7.

C36. Basket Flower Arrangement	C43. Miscellaneous Centerpiece
C37. Christmas Arrangement	C44. Miscellaneous Flower Arrangement
C38. Christmas Wreath	C45. Miscellaneous Wreath
C39. Fall Flower Arrangement	C46. Silk Flower Arrangement
C40. Fall Wreath	C47. Spring Wreath
C41. Holiday Floral Centerpiece	C48. Vase Flower Arrangement
C42. Holiday Wreath	

ASSEMBLED ITEMS AND MISCELLANEOUS

Due to limited space please see rule #9 in general rules on page 7.

C49. Bookmark	C61. Jewelry
C50. Candles	C62. Kitchen Decorated
C51. Craft Kit	C63. Metal Art
C52. Decorated Cards	C64. Miscellaneous Item
C53. Decoupage	C65. Miscellaneous Model
C54. Diorama	C66. Mixed Media Item
C55. Doorstop	C67. Ornament
C56. Garden Decorated	C68. Recycled Item
C57. Hat	C69. Religious Item
C58. Holiday Centerpiece	C70. Scrapbook
C59. Holiday Decorated	C71. Shells
C60. Home Decorated	C72. Vehicle Model
	C73. Wall Hanging

FINE ART HANDICRAFTS – (Emphasis on Artwork/creativity)

Due to limited space please see rule #9 in general rules on page 7.

C74. Artwork on Inside Item	C81. Mosaic
C75. Artwork on Outside Item	C82. Quilling
C76. Carved Item	C83. Paper-Mache Item
C77. Ceramic Figurine	C84. Sculpture
C78. Ceramic Home Item	C85. Stained Glass Home Item
C79. Clay Item	C86. Stained Glass Kit

C80. Egg-decorated	C87. Stained Glass Window Hanging
C88. Etched Glass	C98. Tooled Leather
C89. Garden Item	C99. Toy
C90. Holiday/Seasonal Item	C100. Wall Plaque
C91. Home Item	C101. Wooden Bird House
C92. Intarsia	C102. Wooden Doll House
C93. Kitchen Item	C103. Wooden Hand Carved item
C94. Metal Art	C104. Wooden Jewelry
C95. Miniature furniture	C105. Wood - Miscellaneous
C96. Miscellaneous	
C97. Model	

BAKED GOODS DIVISION

1. All entries in this division shall be placed on a heavy-duty disposable plate and covered with clear cellophane or placed in a plastic bag.
2. Any baked item with extra designs or embellishments should be entered in the decorated baked foods.
3. Baked cakes and breads will be judged as the whole product. After judging, all cakes and breads should be picked up by 5:00 p.m. on Monday, October 11, 2021. All cakes and breads not picked up by 5:00 p.m. will be disposed of. All cakes must be on a sturdy, disposable sheet of cardboard which has been covered with aluminum foil.
4. A ¼ portion of the Grand Champion and Reserve Champion baked items must remain on display during Fair Week. The remaining portion can be picked up.
5. Items requiring refrigeration or freezing will NOT be accepted.
6. Items will be sliced for taste and display.
7. Due to limited space please see rule #9 in general rules on page 7.

CATEGORY “E”

Due to limited space please see rule #9 in general rules on page 7

YEAST BREADS

E1. Bread – Fancy Shaped	E4. Raisin Bread
E2. Bread Machine Item	E5. Rolls – Plain (3)

E3. Cinnamon Rolls (3)	E6. Rolls – Sweet (3)
E7. Coffee Cake	E11. Rye Bread – Loaf
E8. Kolaches (3)	E12. Swedish Tea Ring
E9. Miscellaneous	E13. Sweet Bread
E10. Poppy Seed Roll or 3 Individual Rolls	E14. Wheat Bread – Loaf
	E15. White Bread – Loaf

DECORATED BAKED FOODS (Please note: Do not cut decorated items. They are judged as a whole product and on appearance.) The fair is not responsible for any damage due to climate control.

Due to limited space please see rule #9 in general rules on page 7.

E16. Cut-up Animal Cake	E19. Decorated Cookies (3)
E17. Decorated Cake	E20. Decorated Cupcakes (3)
E18. Decorated Candy (3)	E21. Miscellaneous

CANDY – Exhibit three (3) items of each kind on a paper plate in a sandwich bag,

Due to limited space please see rule #9 in general rules on page 7.

E22. Candy – Coated Pieces	E30. Fudge
E23. Candy – Molded	E31. Martha Washington
E24. Candy – Uncooked	E32. Miscellaneous
E25. Caramel	E33. Peanut Brittle
E26. Chocolate	E34. Pecan Brittle
E27. Coated Nuts	E35. Pralines/Mexican Pecans
E28. Date Roll	E36. Toffee
E29. Divinity	

QUICK BREADS

Due to limited space please see rule #9 in general rules on page 7.

E37. Apple Bread	E48. Miscellaneous
E38. Banana Nut Bread	E49. Muffins (3)
E39. Beer Bread	E50. Oatmeal Bread
E40. Biscuits, Beer (3)	E51. Pumpkin Bread
E41. Biscuits, Dropped (3)	E52. Quick Coffee Cake
E42. Biscuits, Rolled (3)	E53. Soda Bread
E43. Carrot Bread	E54. Strudel
E44. Cornbread	E55. Vegetable Bread
E45. Cranberry Bread	E56. Vegetable Cornbread
E46. Fruit Bread	E57. Zucchini Bread
E47. Mexican Cornbread	

CATEGORY “F”

PIES – Exhibit entries in a disposable pie pan. One slice will be removed for judging. The remaining pie may be picked up or donated to the Fair. Pies requiring refrigeration or freezing will NOT be accepted.

F1. Apple	F9. Miscellaneous Pie
F2. Apricot	F10. Peach
F3. Blackberry	F11. Peanut
F4. Blueberry	F12. Pear
F5. Cherry	F13. Pecan
F6. Dewberry	F14. Raisin
F7. Dried Fruit	F15. Strawberry
F8. Misc. Fruit Pie	F16. Walnut

CAKES

F17. Angel Food	F27. German Chocolate
F18. Bundt Cake	F28. Hummingbird
F19. Cake Mixes/Semi-Homemade	F29. Italian Cream Cake
F20. Carrot Cake	F30. Jelly Roll
F21. Chiffon	F31. Miscellaneous
F22. Chocolate	F32. Nut
F23. Cream Cheese	F33. Pound
F24. Devil’s Food	F34. Prune
F25. Flat Sheet	F35. Streusel
F26. Fruit Cake	F36. White or Yellow

COOKIES – Exhibit three (3) items of each kind placed on **a small paper plate in a quart size bag only.**

F37. Bars	F44. Macaroon
F38. Brownies	F45. Meringue
F39. Cereal	F46. Miscellaneous
F40. Cookie Mix/Semi Homemade	F47. Pressed
F41. Dropped	F48. Rolled
F42. Filled	F49. Shaped
F43. Icebox	F50. Unbaked

CANNED FOODS DIVISION

All canned foods do not need a label just an entry tag. Based on the recommendations of Ball's canning, the level of jar contents must be $\frac{1}{4}$ to $\frac{1}{2}$ " from the top of the jar lid. Low acid canned food items (items in pressure canner) need to have 1" head-space. All jars must be clean and shiny **with rings removed**. Canning can be done in only a standard canning jar (Mason, Ball, Kerr, etc.) – salad dressing or other such jars are not allowed. Fruit, vegetables, fruit pickles and vegetable pickles – pieces in jars should be uniform in size and product should not be floating. Jelly must be firm, but no hard or with visible sugar crystals. It must pull away clean from the side of the jar and still hold its shape. Fruit or vegetable juice must be bright and have a clear color. It should not be cloudy. Quality canned items do not have air pockets or bubbles among the vegetable or fruit pieces. **Categories with less than three (3) entries will receive placement ribbons only!!**

CATEGORY "G"

PRESERVES AND JAMS ($\frac{1}{2}$ pint or pint)

JELLIES AND FRUIT BUTTERS ($\frac{1}{2}$ pint or pint jars)

G1. Apple Butter	G25. Miscellaneous Fruit Butter
G2. Apple Jelly	G26. Miscellaneous Jam
G3. Apricot Jam	G27. Miscellaneous Jelly
G4. Apricot Preserves	G28. Miscellaneous Preserves
G5. Banana Butter	G29. Mixed Fruit Jam
G6. Berry Jam	G30. Mixed Fruit Jelly
G7. Berry Jelly	G31. Peach Butter
G8. Berry Preserves	G32. Peach Jam
G9. Blueberry Jam	G33. Peach Jelly
G10. Blueberry Jelly	G34. Peach Preserves
G11. Blueberry Preserves	G35. Pear Butter
G12. Cactus Jelly	G36. Pear Honey
G13. Cherry Jam	G37. Pear Preserves
G14. Cherry Jelly	G38. Pepper Jam
G15. Cherry Preserves	G39. Pepper Jelly
G16. Dewberry Jelly	G40. Pineapple Preserves
G17. Dietetic Jelly	G41. Plum Butter
G18. Exotic Fruit Butter	G42. Plum Jam
G19. Exotic Jelly	G43. Plum Jelly
G20. Exotic Preserves	G44. Plum Preserves
G21. Fig Jam	G45. Raspberry Jam

G22. Fig Preserves	G46. Raspberry Jelly
G23. Grape Butter	G47. Strawberry Jam
G24. Grape Jam	G48. Strawberry Jelly
G49. Grape Jelly	G53. Tomato Jelly
G50. Jam with Jell-O	G54. Tomato Preserves
G51. Marmalade (any kind)	G55. Watermelon Preserves
G52. Mint Jelly	G56. Wine Jelly

MISCELLANEOUS (Entry may be exhibited in appropriate container or jar and does not need to be in sealed jars.)

G57. Cereal Snack Mix	G64. Homemade Pasta
G58. Cooked Cheese	G65. Homemade Soap
G59. Dehydrated Fruit	G66. Homemade Syrup
G60. Dehydrated Vegetables	G67. Honey (strained)
G61. Dehydrated Miscellaneous	G68. Honey in Comb (quart)
G62. Flavored Popcorn	G69. Miscellaneous
G63. Homemade Noodles	G70. Spiced Nuts

CATEGORY “H”

CANNED FRUIT (standard pint or quart jars)

FRUIT JUICE (standard jars)

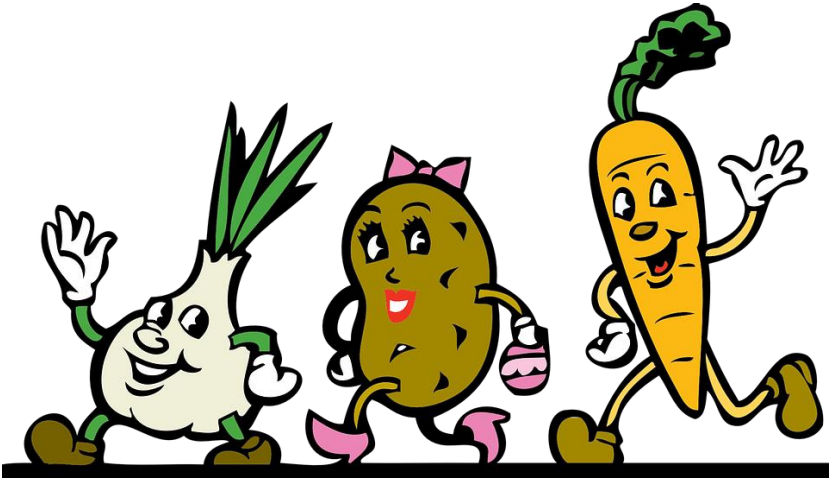
H1. Apple Juice	H10. Fruit (mixed)
H2. Apples	H11. Fruit Juice (miscellaneous)
H3. Apricot	H12. Grape Juice (Domestic)
H4. Berries (other)	H13. Grape Juice (Wild)
H5. Berry Juice	H14. Peaches
H6. Blackberries	H15. Pears
H7. Blueberry	H16. Raspberry
H8. Figs	H17. Tomato Juice
H9. Fruit (miscellaneous)	H18. Tomatoes

CANNED VEGETABLES (standard pints or quarts) (not pickled)

H19. Beets	H27. Okra and Tomatoes
H20. Carrots	H28. Peppers – any kind
H21. Corn	H29. Potatoes – any kind
H22. Field Peas	H30. Sauerkraut
H23. Green Beans	H31. Soup Mix
H24. Lima Beans	H32. Squash
H25. Miscellaneous	H33. Zucchini Squash
H26. Okra	

RELISHES AND PICKLES

- | | |
|-----------------------------|------------------------------------|
| H34. Barbecue Sauce | H52. Peaches – Pickled |
| H35. Beans – Pickled | H53. Pears – Pickled |
| H36. Beets – Pickled | H54. Peppers – Jalapeños – Pickled |
| H37. Bread & Butter Pickles | H55. Peppers – Pickled – Hot |
| H38. Carrots – Pickled | H56. Peppers – Pickled – Sweet |
| H39. Catsup | H57. Picante Sauce |
| H40. Chili Sauce | H58. Pickled Green Tomatoes |
| H41. Chow Chow | H59. Relish – Misc. any kind |
| H42. Chutney – any kind | H60. Salsa |
| H43. Corn Relish | H61. Sour Pickles |
| H44. Cucumber Relish | H62. Squash Pickled |
| H45. Dill Pickles | H63. Squash – Relish |
| H46. Green Tomato Relish | H64. Sweet & Sour Pickles |
| H47. Holiday Pickles | H65. Sweet Pickles |
| H48. Hot Pickles | H66. Tomato Sauce |
| H49. Miscellaneous | H67. Vegetables – Pickled |
| H50. Okra – Pickled | H68. Watermelon Rind Pickles |
| H51. Onions – Pickled | |



PHOTOGRAPHY DIVISION

Chairman: Pam O'Brian 979-820-5025

Co-Chair: Mandy Worsham

1. All entries must be in the form of color or black & white 8"x10" prints mounted on a foam or mat board of the exact dimension 8"x10". No frames allowed.
2. The photo may be cropped for effect but the dimensions of 8"x10" must remain. Negatives are not required.
3. Only one entry may be submitted per class. No exceptions. Prints from film or digital cameras are accepted in all classes.
4. There must be at least three (3) photos entered in the "Single Black & White Print" category and at least three (3) photos entered in the "Single Color Print" category in order to be awarded premium money. Categories with less than three (3) entries will only be awarded placement ribbons.
5. Photos should be printed on regular photographic paper. If a contestant wants to use special paper, which enhances the photograph, they would be able to enter it in the "Special Effects" category.

CATEGORY "J"

SINGLE COLOR PRINT

J1. Action	J9. Miscellaneous
J2. Animal	J10. People
J3. Aquatic	J11. Plant/Flora
J4. Austin County Fair Memories	J12. Patriotic
J5. Landscape	J13. Scenic
J6. Insects	J14. Special/Creative Effects
J7. Macro	J15. Still Life
J8. Man Made Object	

SINGLE BLACK & WHITE PRINT

J16. Action	J24. Miscellaneous
J17. Animal	J25. People
J18. Aquatic	J26. Plant/Flora
J19. Austin County Fair Memories	J27. Patriotic
J20. Landscape	J28. Scenic
J21. Insects	J29. Special/Creative Effects
J22. Macro	J30. Still Life
J23. Man Made Object	

FINE ARTS DEPARTMENT SCHOOL AND OPEN RULES AND REGULATIONS

1. All entries are subject to the General Rules of the Austin County Fair.
2. Entries will be received Monday, October 11, 2021 from 10:00 a.m. until 7:00 p.m.
3. All artwork submitted must have been made since November 2020.
4. Only one (1) piece of artwork per person will be accepted.
5. All exhibits in this department must be labeled, giving name, address/school and exhibitor division.
6. Exhibitor divisions are:
Open: adult (non-professional), high school, junior high and youth
School Art: high school, junior high, elementary

**“BE CREATIVE AND ORIGINAL IN COMPOSITION
AND IN EXPRESSION.”**

7. **Entry Regulations:**
NO Plagiarism allowed!
Published images MAY NOT be reproduced in whole or part. Published images include, but are not limited to, drawings, sketches or photographs published electronically (eBooks, mobile apps, web sites, etc.) or in print (magazines, books, brochures, etc.). No trademark logos, licensed characters or any other copyrighted image. However, any listed may be used as reference material.

No obscenity allowed!

No profane references to a deity, obscene language, drug abuse or paraphernalia, images that are violent or any content that may offend the moral standards of the community.

8. Acceptable medium:

Pencils (graphite, colored, charcoal), pressed crayon, pastels (chalk, oil), paints (tempera, acrylic, watercolors, oil), inks (pen & ink, printmaking, graffiti), paper (collage).

**All loose materials must be 'fixed' with a spray fixative.*

9. Size of Work:

Adult, High School, Junior High ages – maximum overall dimensions of mounted artwork cannot exceed 24" x 24".

Elementary and preschool ages – artwork cannot exceed 9"x12"; mounted with no more than a 1" border (example: mount the 11"x14" art piece on a half (1/2) sheet poster board; final measurement will be 11"x14" including a 1" border.)

10. Artwork must be mounted or matted with white or black mounts/mats; no liners or additional inner mats allowed. **Un-mounted artwork will not be accepted by judges.**

11. All artwork needs to be unframed. Canvas board/stretched canvas artwork needs to have a tab attached to each top corner so that the artwork can be hung on the display board.

12. Do not put your signature on the front of your artwork.

13. Awards:

Elementary School Art:

One (1) "Best of Show" and one (1) "Honorable Mention" rosette will be awarded to grades Pre-K thru 3 and grades 4 thru 5 per district. The remaining entries will receive participation ribbons. Prize money: "Best of Show" receives \$10.00 and "Honorable Mention" receives \$5.00.

Junior High School Art:

One (1) “Best of Show” and one (1) “Honorable Mention” rosette will be awarded per campus. Judges will award blue and red ribbons based on merit. Prize money: “Best of Show” receives \$15.00 and “Honorable Mention” receives \$10.00. No prize money will be awarded for blue and red ribbons.

High School Art:

One (1) “Best of Show” and one (1) “Honorable Mention” rosette will be awarded per campus. Judges will award blue and red ribbons based on merit. Prize money: “Best of Show” receives \$15.00 and “Honorable Mention” receives \$10.00. No prize money will be awarded for blue and red ribbons.

Open Adult:

One (1) “Best of Show” and one (1) “Honorable Mention” rosette will be awarded. Judges will award blue and red ribbons based on merit. Prize money: “Best of Show” receives \$15.00 and “Honorable Mention” receives \$10.00. Prize money will be awarded for blue and red ribbons.

Open Youth:

One (1) “Best of Show” and one (1) “Honorable Mention” rosette will be awarded. Judges will award blue and red ribbons based on merit. Prize money: “Best of Show” receives \$10.00 and “Honorable Mention” receives \$5.00. Prize money will be awarded for blue and red ribbons.

 **Overall Grand (1) and Reserve Champion (1) will be awarded to School Art and the Open Division. Prize money will be Grand Champion \$20.00 and Reserve Champion will be \$15.00.** 

ADDITIONAL SCHOOL ART **RULES AND REGULATIONS**

14. Each school will be permitted to enter a quota of twenty (20) best pieces of work from the High School Division and a quota of twenty (20) best pieces of work from the Junior High Division. At the Elementary level each district may submit a maximum of (30) pieces.
15. For Private or Home Schools to be entered under School Art, campus must have a minimum of ten (10) pieces of artwork.
16. Student work must be teacher “verified”. This means that all work submitted must be created by the student under the teacher’s observation.
17. All work submitted by teachers will be picked up by teachers and released to the student at school.



phillipmartin.info

FLOWER SHOW

EXHIBITORS MAY BE:

- Group I - Any adult citizen of Austin County and not an owner of a nursery or floral shop.
- Group II - Students of Austin County in grades Kindergarten through 12 are eligible to enter in the Open Flower Show Youth Division and are eligible to be awarded ribbons, trophies or prize money. Austin County Clover Kids, 4-H, Junior and Senior FFA and FCCLA members may enter the Open Flower Show Youth Division but are not eligible for ribbons, trophies or prize money. Please note there is a division for these groups where you are eligible for awards.
- Group III - Any commercial owners of a nursery, floral shop or floral designer who perform their duties in a professional capacity.

RULES AND REGULATIONS

1. Entries will be accepted on Monday, October 11, 2021 from 10:00 a.m. until 7:00 p.m.
2. Exhibits must remain in place until noon. on Sunday, October 17, 2021. PLEASE DO NOT REQUEST EARLY REMOVAL OF AN EXHIBIT.
3. Number of entries is limited to a total of ten (10) per person. In the Horticulture Division, an exhibitor may enter only one exhibit per variety in a class. Example: under hybrid tea roses, one Tropicana, one Peace, one Chrysler Imperial, etc. may be entered as long as each exhibit is a different variety.
4. ENTRY FEE: An entry fee of \$1.00 per item will be charged for 1-10 items; \$10.00 per exhibitor will be charged for ten (10) items.

5. No artificial flowers or foliage will be allowed, and NO SPRAY OR GLOSS IS PERMITTED ON ANY HORTICULTURE EXHIBIT.
6. Trophy winning exhibits from 2018 and 2019 will not be eligible for 2021 trophies; ribbon awards or monetary awards.
7. Horticulture exhibits must have been in exhibitor's possession for at least 90 days and exhibits must be established in show containers at least 60 days.
8. Entry cards may be obtained in advance from committee members or the Fair Office at the fairgrounds in Bellville. They are to be completed in advance, if possible, and each exhibitor is required to sign the exhibit card before the exhibit is entered or placed.
9. Care will be taken in having exhibits observed during the four (4) days the show is open to the public in order to prevent unnecessary damage to exhibits. However, each exhibitor is to take the responsibility to give his/her exhibit any care or water that he/she deems necessary during the display times.
10. All exhibit prize money must be collected between 11:00 am and 3:00 p.m. on Sunday, October 17, 2021 at the Fair Office. Money not picked up by November 1, 2021 will be forfeited.
11. Ribbon awards will be given as follows to all groups: Blue Ribbon to exhibits scoring 90-100 points; Red Ribbon to exhibits scoring 80-89 points. Prize money will be paid as follows: Group I Adult and Group II Youth: \$1.25 for Blue Ribbon. \$.75 for Red Ribbon, \$15 for Grand Champion, \$10 for Reserve Champion. Special recognition ribbons may be given, if merited. Trophies will be available in classes indicated on trophies.
12. Pictures will be taken of trophy winners on Sunday, October 17, 2021 at 1:00 p.m. in the Flower Show Department in the EXPO CENTER.

HORTICULTURE DIVISION

AN EXHIBITOR MAY ENTER ONE EXHIBIT PER VARIETY AND A TOTAL OF 10 EXHIBITS.

ANY CUT SPECIMEN IS TO BE DISPLAYED IN EITHER A CLEAR GLASS OR CLEAR PLASTIC BOTTLE WHICH IS APPROPRIATE TO THE SIZE OF THE SPECIMEN (SEE GENERAL RULES)

CLASS 1 – ROSE SPECIMEN

CLASS 2 – ANNUALS SPECIMEN

CLASS 3 – PERENNIAL – SPECIMEN

CLASS 4 – BULBS, CORMS, TUBERS, RHIZOMES, ETC. – SPECIMEN

CLASS 5 – FOLIAGE PLANTS – SPECIMEN

CLASS 6 – FLOWERING, BERRIED, FRUITED VINES, SHRUB OR TREE – ONE BRANCH 12-18 INCHES LONG – SPECIMEN

POTTED PLANTS AND HANGING CONTAINERS ARE TO BE DISPLAYED IN A CLEAN CONTAINER. THE CONTAINER SHOULD BE APPROPRIATE FOR THE PLANT – ENHANCING THE PLANT WITHOUT DETRACTING FROM IT:

CLASS 7 – POTTED FERNS

CLASS 8 – POTTED FOLIAGE PLANTS

CLASS 9 – POTTED BLOOMING PLANTS – PLANT MUST BE IN BLOOM TO BE IN THIS CLASS 9. IF NOT IN BLOOM, THEN PLANT IS IN CLASS 8.

CLASS 10 – POTTED CACTI OR SUCCULENT

CLASS 11 – UNUSUAL OR EXOTIC POTTED PLANT OR SPECIMEN

CLASS 12 – HANGING CONTAINER

CLASS 13 – GARDENS – DISH – TERRARIUMS

CLASS 14 – FRESH, DRIED OR ARTIFICIAL ARRANGEMENT

Judging Criteria for Flower Arrangements:

Color Harmony in Arrangement

Design an Attractive Effect

Balances in Volume and Color

Proportion of Plant Material and Container

Suitability of Material and Relation to Container

Distinction and Originality

Construction of Overall Arrangement-Concealing & Stability

CLASS 15 – AFRICAN VIOLETS

FRUITS AND VEGETABLES ARE TO BE DISPLAYED ON AN APPROPRIATELY SIZED DISPOSABLE PLATE. EXCEPT FOR MELONS, FOR WHICH NO PLATE IS REQUIRED. THE FOLLOWING QUANTITIES ARE REQUIRED FOR JUDGING PURPOSES:

CLASS 16 – FRUITS (DISPLAY ON APPROPRIATE SIZE PAPER PLATE) – Minimum of 3 pieces per entry per item Watermelon quantity one (1) will be accepted.

CLASS 17 – VEGETABLES (DISPLAY ON APPROPRIATE SIZE PAPER PLATE)- Minimum of 3 pieces per entry per item

MAY BE EXHIBITED IN EITHER A CLEAN POT OR HANGING CONTAINER APPROPRIATE FOR THE PLANT OR AS A SPECIMEN.

CLASS 18 – HERBS Potted or Specimen

COUNTRY STORE

RULES AND REGULATIONS

1. An individual must enter competition in the Home Economics Division of the Austin County Fair. Rules and regulations of the exhibitor's corresponding department will be followed with special rules for baked goods and canned goods.
2. **NO COMMERCIAL EXHIBITORS ALLOWED.** All items entered for sale must be **made by the exhibitor**. Items listed in the official 2021 Austin County Fair Catalog may be used for a guide.
3. Handcrafted items entered for sale in the Country Store will not be judged and will not receive ribbons. Premium money will not be paid for these items. Items entered in the baked goods division by **ADULT** exhibitors may be brought to the Country Store to sell.
4. Sale items may be entered the same days as all other exhibits of the EXPO CENTER, as well as during Country Store hours.
5. Baked goods may be entered the first Monday, Tuesday, Wednesday, Thursday, Friday and Saturday during Country Store hours. Any perishable baked goods not sold or picked up may be discarded at the close of the second day of exhibition.
6. All canned goods and baked items are to be labeled **ON THE ITEM** as well as the sale tag. Canned items are to have been prepared within the last year only and must be secured with rims.
7. Exhibitors must complete their own sale items on a yellow sale card and individual yellow sale tags. The following information is required on the sale tags.
 - A. Exhibitor's number (same as used in competition)
 - B. Item number (as listed on sale card)
 - C. Brief item description (ex. pink bib)
 - D. Name
 - E. Sale price (Twenty percent of the sale price will go to the Austin County Fair Association. For sales totaling

over \$500, the Austin County Fair Association will receive thirty percent.)

The numbers of the sale items and the sale card must correspond and be legible. A minimum price of \$1.00 will be charged per item and pricing must be done in increments of fifty cents.

8. Exhibitors will be asked to work the equivalent of four hours in the Country Store. If an exhibitor is unable to fulfill this duty, he/she must find a substitute.

9. The Country Store will be open as follows:

Oct. 9, Saturday	9:00 am - 8:00 p.m.
Oct. 12, Tuesday	10:00 a.m. - 8:00 p.m.
Oct. 13, Wednesday	10:00 a.m. - 8:00 p.m.
Oct. 14, Thursday	11:00 a.m. - 10:00 p.m.
Oct. 15, Friday	10:00 a.m. - 10:00 p.m.
Oct. 16, Saturday	12:00 noon - 10:00 p.m.
Oct. 17 Sunday	11:00 a.m. - 2:00 p.m.

10. Items not sold should be picked up between 2:00 p.m. – 3:00 p.m. on Sunday, October 17, 2021.

11. All money for sale items will be mailed to exhibitors within thirty (30) days.

12. The Austin County Fair Association and volunteers will not be responsible for items lost, damaged or stolen.

COUNTRY FAIR AUCTION

**SATURDAY, OCTOBER 16, 2021
1:00 P.M.
AUSTIN COUNTY FAIR CONVENTION
& EXPO CENTER**

Don't miss the most fantastic and fun auction of the 2021 Austin County Fair! On Saturday afternoon, a wide variety of special handmade and needle-crafted articles and unique, one-of-a-kind items that have been donated by supportive organizations, businesses and individuals will be features at the **COUNTRY FAIR AUCTION!**

In addition, Grand Champion breads, pickles, jellies and other home-canned foods, as well as plants and craft items will be on the auction block. Members of 4-H, FCCLA, Extension Education Association and other individuals have donated their Grand Champion items toward this auction. **Baked goods must be at the fairgrounds by 10:00 am on Saturday.** All proceeds from the auction will go to the Austin County Fair Association.

Although precautions will be taken, the Austin County Fair Association and volunteers will not be responsible for items lost, stolen or broken.

**Bidding begins on
SATURDAY, OCTOBER 16, 2021 AT 1:00 P.M. in
the AUSTIN COUNTY FAIR CONVENTION &
EXPO CENTER.**

Relax with a cool drink in air-conditioned comfort and place your bid at the **COUNTRY FAIR AUCTION!**