



# BOROUGH OF ST. LAWRENCE



Volume 28 Issue 1

MARCH 2022

## EASTER BUNNY RETURNS TO THE BOROUGH FOR THE ANNUAL EASTER EGG HUNT ON FRIDAY APRIL 15<sup>th</sup>, 9:00 AM SHARP

The Egg Hunt begins exactly at 9 AM on the municipal playground at 3500 Jacksonwald Avenue. Be prompt, by 9:15 the gathering of eggs is over. The Bunny will arrive on the Borough truck to start the hunt. Light refreshments will be offered after the hunt is finished. Prize eggs are used in each age group, you must be present to win. The only way to determine if your child had a prize egg is to open the plastic egg before leaving the playground.



**Please keep your children off all play equipment and fields until after the egg hunt is finished.**

## DOG WASTE BAGS , ANIMALS AT LARGE, CHICKENS & OTHER THINGS THAT ARE VIOLATIONS OF ORDINANCE #433 REGULATIONS FOR THE KEEPING OF ANIMALS

Dog walkers leaving full dog waste bags on people's properties. Thank you for bagging the waste, but take it home with you and dispose of the full bag in your trash receptacle. Yards must be cleaned of poop.

Chicken coops are not permitted in any residential areas of the Borough.

Animals owned, under custody, supervision or control of a person **may not be at large without controlled restraint** either upon public streets, alleys or sidewalks in the Borough or upon property of another, including the property of the Borough or School District.

Any animal or bird which howls, barks, meows, squawks, or makes other sounds continuously (10 minutes) or intermittently (30 minutes) to the disturbance of any Person at any time violates the Ordinance



**ORDINANCE AVAILABLE ON THE BOROUGH WEBSITE - [www.stlawboro.com](http://www.stlawboro.com)**

### ST. LAWRENCE BOROUGH HALL ACCESS RESTRICTED - ENTRANCES ARE LOCKED PUBLIC PERMITTED ENTRY DURING REGULAR OFFICE HOURS

FRONT DOOR ENTRY (HANDICAP RAMP) - PLEASE KNOCK ON WINDOW OR DOOR

REAR DOOR ENTRY (PARKING LOT) ELEVATOR ACCESS- PLEASE RING DOOR BELL TO THE RIGHT OF THE REAR DOOR, A STAFF MEMBER WILL OPEN THE DOOR, IT MAY TAKE SEVERAL MINUTES

BRUMBACH STREET DOOR IS AN EXIT ONLY.

OFFICE HOURS: Monday - Thursday 8:30 AM - 2:30 PM & Friday 8:30 AM - NOON    OFFICE PHONE: 610-779-1430

### COUNCIL MEETINGS LIVE ON THE BOROUGH YOUTUBE CHANNEL

Monthly Council meetings available live on YouTube (second Thursday of the month at 7:30 PM), along with previously recorded meetings. During the live meeting, questions can be asked of Council by email. See the links on the Borough website: [www.stlawboro.com](http://www.stlawboro.com) , for the channel and meeting email.

TO REPORT ANY ENVIRONMENTAL INCIDENT WHICH ADVERSELY AFFECTS THE HEALTH & SAFETY OR THE ENVIRONMENT OF THE CITIZENS OF THE COMMONWEALTH: DEP 24/7 ENVIRONMENTAL RESPONSE: 1-866-825-0208

**IF ANY EMERGENCY IS LIFE THREATENING PLEASE DIAL 9-1-1**

CONTACT BOROUGH OFFICE TO REPORT ILLICIT DISCHARGES: ANY DISCHARGE TO THE STORM DRAIN SYSTEM, SANITARY SEWER SYSTEM OR WATERWAYS THAT IS NOT THE RESULT OF FIRE FIGHTING OR A RAIN EVENT

(SEE MUNICIPAL INSERT FOR BOROUGH STAFF EMERGENCY CONTACT INFORMATION)



## COMMUNITY/FERAL CATS AND A TNR (TRAP NEUTER RETURN) PROGRAM

A feral cat has reverted in some degree to a wild state. They originate from former domestic cats who were lost or abandoned by their owners and learned to live outdoors or in environments with very little human contact. In most cases, feral cats are not completely wild depending upon people for their food source, whether it's a caretaker or other food sources. A TNR program respects that a feral cat may not be tamed with the most compassionate choice being to allow them to live outdoors. The neutering of feral cats prevents tremendous suffering but controls the population, reducing unacceptable behaviors to live out their lives. The life span of a feral cat depends upon several factors: regular caretaker (not owner) who provides food and shelter, surrounding wildlife (predators), local human population and the amount of vehicular traffic in the area.

**Why TNR, an unspayed female cat, her mate and all of their offspring, producing 2 litters per year, with 2.8 surviving kittens per litter can total: Year 1 - 12, Year 2 - 67, Year 3 - 376, Year 4 - 2,107, Year 5 - 11,801, Year 6 - 66,088, Year 7 - 370,092 and so on.**

The Borough sponsors the neutering of feral cats for Borough Residents by No Nonsense Neutering, call the Borough office for details. A neutered feral cat will have a tipped ear, see photo ➡



## PARKING RESTRICTIONS BY ORDINANCE ON BOROUGH STREETS

The following shall not be parked or stored on Borough Streets except for a 24- hour time period in which they are loaded or unloaded. All trailers must be attached to a motor vehicle. The parking or storage of these items on the streets is deemed to be a traffic hazard injurious to the public interest. The Police are authorized to enforce this ordinance.

- |                 |                 |                         |
|-----------------|-----------------|-------------------------|
| * Truck Tractor | *Boat Trailer   | * Truck Tractor Trailer |
| *Trailer        | *Tent Trailer   | *Recreational Equipment |
| *Boat           | *Cargo Trailer  | *Motorized Dwellings    |
| *Motor Homes    | *Travel Trailer | * Equipment Trailer     |



## EMERGENCY NOTIFICATION SYSTEM

The Borough uses the Code Red System to notify residents and businesses about emergencies and general notifications, such as trash pickup changes.

If you are signed up, please verify that all your contact information is correct. **If you have made any changes to you email, cell number and/or landline, it must be changed or removed from the CodeRed system.**

If you are new to the Borough please sign up for notifications with CodeRed. Access the CodeRed system through the link on the home page of the Borough website @ [www.stlawboro.com](http://www.stlawboro.com). CodeRed will be used for emergency notifications (snow emergency, etc.) and general notifications (trash day change ). Any questions, please contact the Boro Office.

**If you no longer wish to receive calls, texts or emails and/or are moving out of the Borough, please call the Borough Office and provide all your contact information so we may add it to the DO NOT CONTACT list.**

This is the quickest method we have for contacting the Borough residents in Case of Emergency. We avoid making excessive contacts.

## WHAT ARE THOSE PAINTED LINES DOING ON MY YARD? WHO PUT THEM THERE?

### Temporary Marking Guidelines



White - Proposed Excavation



Pink - Temporary Survey Markings



Red - Electric Power Lines, Cables, Conduit and Lighting Cables



Yellow - Gas, Oil, Steam, Petroleum or Gaseous Materials



Orange - Communication, Alarm, or Signal Lines, Cables or Conduit and Traffic Loops



Blue - Potable Water



Purple - Reclaimed Water, Irrigation and Slurry Lines



Green - Sewer and Drain Lines

**COLOR CODES USED BY THE UTILITY COMPANIES, MUNICIPAL AUTHORITIES AND MUNICIPALITIES TO MARK UNDERGROUND UTILITIES**

### Do I have to call if I am digging on my own property?

Yes, you are required to inform the utilities of any type of work involving the movement of earth with **powered equipment**.

### Who should make the call?

The person who is doing the digging should place the one call notification. If you are a homeowner and you've hired an excavator to do the work, the excavator is required by law to call to have lines located (refer to Section 5 of PA Act 287).

### How deep must I dig before I am required to call?

If you are digging with powered equipment the person operating the equipment must call. It does not matter how deep you are digging or where you are digging within the Commonwealth of Pennsylvania.

### What are PA One Call's hours of operations?

The call center is open 24-hours a day, 7 days a week, every day of the year.

### How many days do I have to wait before I can begin digging?

State law requires a three (3) business day notice (does not include state holidays or weekends), but not more than ten (10) business days prior to the start of excavation. A business day begins at 12:00:00 a.m. and ends at 11:59:59 p.m. The first lawful start date for your excavation is determined by your scheduled excavation date (the day you plan to start digging), work should not begin prior to your first lawful start date but no later than 10 business days from the day of your call.

### Why should you call?

Safe digging is no accident! If you are installing a fence or deck, or digging for a mailbox post, patio or other excavation project, it is important to **KNOW WHAT'S BELOW**.

For more information, visit [www.pa811.org](http://www.pa811.org)



## BERKS COUNTY HOUSEHOLD HAZARDOUS WASTE COLLECTION

**ALL RESIDENTS MUST PRE-REGISTER FOR THIS EVENT - BERKS COUNTY RESIDENT ONLY**

**APRIL 9, 2022 (8:00 AM - 2:00 PM) RAIN OR SHINE**

**WHERE: GOVERNOR MIFFLIN INTERMEDIATE SCHOOL - 600 GOVERNOR DRIVE - SHILLINGTON**

**TO REGISTER GO TO: [www.countyofberks.com/swa](http://www.countyofberks.com/swa)**

**SELECT FROM THE MENU ON THE RIGHT: 2022 HOUSEHOLD HAZARDOUS WASTE - ([Registration Required](#))**

**ABSOLUTELY NO LATEX PAINT ACCEPTED**

### DISPOSAL INSTRUCTIONS:

DO NOT MIX MATERIALS;  
TIGHTEN LIDS & PLACE LEAKING CONTAINERS IN A LARGER CONTAINER; USE ORIGINAL CONTAINERS WITH LABELS ; OR MARK CONTAINER WITH CONTENTS

**HOUSEHOLD ITEMS:** SOLVENTS; DISINFECTANTS; RUG, OVEN & DRAIN CLEANER; BUTTON, LITHIUM & NiCAD BATTERIES; FLOOR & FURNITURE POLISH, FLUORESCENT BULBS  
**OIL PAINTS:** TURPENTINE; WOOD PRESERVATIVE; PAINT THINNERS & SOLVENTS; OIL BASED PAINTS, VARNISHES & STAINS (ABSOLUTELY NO LATEX PAINT WILL BE ACCEPTED)  
**OUTDOORS:** WEED KILLERS; PESTICIDES; ASPHALT & DRIVEWAY SEALANTS; POOL CHEMICALS; HERBICIDES & FUNGICIDES  
**AUTOMOTIVE:** ANTIFREEZE; GASOLINE; TRANSMISSION & MOTOR OIL; AUTOMOTIVE PAINTS & FINISHES

## PROPERTY MAINTENANCE CODE AND OTHER ORDINANCE VIOLATIONS

- ◆ GRASS AND/OR WEED HEIGHT GREATER THAN 10 INCHES
- ◆ PILES OF JUNK LAYING AROUND YOUR PROPERTY (TRASH AND RUBBISH)
- ◆ BUSHES AND TREES ENCROACHING ONTO SIDEWALKS CAUSING HAZARDOUS CONDITIONS
- ◆ MOWING GRASS OR BLOWING DEBRIS FROM YARD ONTO THE STREET



## THE BOROUGH CONTRACTS WITH THE ANIMAL RESCUE LEAGUE FOR 2022 ANIMAL CONTROL SERVICES

Services offered to residents of the Borough through the contract, beginning January 1, 2021:

- ◆ Transport (when available) and animal holding services for stray domestic cats and dogs regardless of behavior, medical or capacity status. They will pursue contact of owner. 24/7-365.
- ◆ Animal holding services for stray domestic dogs regardless of behavior, medical or capacity status. Emergency overnight service. Limited, emergency-only transportation available for aggressive or severely injured animals or by request of a police officer. They will pursue contact of owner. 24/7-365.
- ◆ Enforce Dog Law with Pennsylvania State Certified Humane Law Officers, including dogs at large, dog bites, dog licenses and cat/dog vaccinations
- ◆ Support local and state police, county sheriffs and constables with search warrants; investigations of dangerous dogs; and removal of animals following evictions or involved in accidents.
- ◆ Support state and county health department with investigation/confirmation of dog/cat bites/scratches; and implementation, compliance and completion of home/shelter quarantines.
- ◆ Investigate animal cruelty and neglect complaints with Pennsylvania State Certified Humane Officers
- ◆ Priority access to owners who wish to surrender their pets (owner pays \$50 fee)
- ◆ Hoarding case management and humane removal of live/deceased animals
- ◆ Pickup of rabid, seriously injured, diseased or dangerous animals. Testing of rabid animals.
- ◆ Community access to reduced-price microchip, vaccine or spay/neuter clinics. ARL pursues animal-related grants to expand these services and offer them at low or no cost to eligible municipal residents.
- ◆ Comprehensive and targeted spay/neuter, vaccination and microchipping programming to control and reduce the free-roaming community cat population. Outcomes include adoption or Trap-Neuter-Return (TNR).
- ◆ Access to an ARL representative **during business hours**, 7 days a week, for questions concerning humane law, animal control and non-cruelty concerns.
- ◆ Includes an answering service and emergency response by an ARL representative 24/7 - 365, including holidays.

## GENERAL HOURS:

MONDAY - FRIDAY: 9 AM - 7 PM

SATURDAY - SUNDAY: 9 AM - 5 PM

PHONE: 610-373-8830

FAX: 610-372-6374

ADDRESS: 58 KENNEL ROAD, BIRDSBORO PA 19508

Website: [www.berksarl.org](http://www.berksarl.org)

- ◇ Go to the website, click on ABOUT US for additional information and service procedures due to Covid.
- ◇ Volunteer and donation opportunities are available.
- ◇ Verify office hours

## HAVE A U.S. FLAG THAT NEEDS TO BE RETIRED

The P.O.S. of A (Patriotic Order Sons of America) Camp #230, which meets in Borough Hall, placed a drop box inside the rear entrance of Borough Hall to receive any U.S. Flag you need to retire. The retired flags are burned during a special ceremony.



## WOMAN'S CLUB ELECTION DAY SALE

The Woman's Club will have the following on sale for Election Day in the rear parking lot of Borough Hall, until sold out. It is recommended that you pre-order sandwiches by calling Martha Wentzel @ 610-780-6384



- \* **Sandwiches:** Italian, Turkey & Ham
- \* **Soup by the Quart:** a variety of flavors
- \* **Baked Goods:** Variety of items and prices

**ELECTION DAY MAY 17<sup>th</sup>, POLLS OPEN 7 AM**

## SPRING STREET SWEEPING - APRIL 7<sup>th</sup> & 8<sup>th</sup>

Annual Spring Street Sweeping of all curbed streets, including St. Lawrence Avenue, begins on April 7<sup>th</sup>, the even numbered addresses and should finish on April 8<sup>th</sup>, the odd numbered addresses, weather permitting.

Our State and Federal mandated Stormwater management program requires removal of debris from the Borough's streets.

On April 6<sup>th</sup>, a **Code Red™** General Notification call will be made reminding residents to move or remove their vehicles from the street. Your cooperation in removing your vehicle from the street would be greatly appreciated.

If you are not signed up for **Code Red™** or you have any questions please contact the Borough office @ 610-779-1430.

## THE 9<sup>th</sup> ANNUAL

## TAKE A HIKE ON THE HILL

On Saturday, April 23<sup>rd</sup> Councilman Warren Lubenow will lead a guided hike of the St. Lawrence Water Shed Property. The hike will start at the playground located at 3500 Jacksonwald Avenue and proceed up Adams Street at 9 AM and will last about 2 hours.

The trails through the Borough's woodlands, approximately 250 acres, may be steep, rocky, muddy and strenuous. Appropriate footwear (hiking boots) and clothing (no shorts) required.

If you would like to join the hike or would like more information please call Borough Hall @ 610-779-1430.

# INVASIVE PEST - SPOTTED LANTERNFLY

INFORMATION PROVIDED BY



PennState Extension



Early nymph

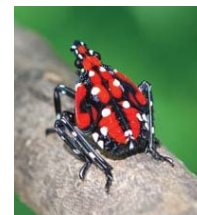
(actual size = 1/8") Found late April-July.  
Photo credit: PA Department of Agriculture

## STEPS OF SPOTTED LANTERNFLY MANAGEMENT

1. Stop the spread
2. Scrape egg masses
3. Use tree traps to catch nymphs
4. Remove host plants
5. Apply insecticides

FOR ADDITIONAL INFORMATION OR LINKS ON THE WEB GO TO:

<https://extension.psu.edu/spotted-lanternfly-management-for-residents> or  
<https://www.stlawboro.com/spotted-lanternfly.html>



Late nymph (actual size = 1/2") Found July-September. Photo credit: PA Department of Agriculture

Any effort to control the SLF on your property or in your community helps to prevent their spread.

**Egg scraping**, an effective means of removing eggs from trees and other surfaces. Walk around your property to check for egg masses on trees, cement blocks, rocks, and any other hard surface. If you find egg masses on your property from September to May, you can scrape them off using a plastic card or putty knife. Scrape them into a bag or container filled with rubbing alcohol or hand sanitizer and keep them in this solution permanently. Egg masses can also be smashed. Remember that some eggs will be unreachable at the tops of trees, in other well-hidden areas, and throughout your neighborhood and community. Be aware that this method may not reduce the number of nymph or adult SLF you see later in the year.

**Tree traps**, After the eggs hatch, nymphs will walk up the trees to feed on the softer new growth of the plant. Nymphs frequently fall to the ground, walk to trees, and walk back up the trunks. Take advantage of this behavior by wrapping tree trunks in tree traps to catch the nymphs. Traps can be used on any tree, but we recommend only banding trees where SLF is abundant. You can use either sticky bands or a funnel-style trap. Sticky bands may be purchased online or from your local garden center. Push pins can be used to secure the band. While some bands may catch adults, banding trees is most effective for nymphs. Be advised that birds and small mammals stuck to the bands have been reported. To avoid this, you should cage your sticky bands in wire or fencing material wrapped around the tree. Alternately, try reducing the width of the band, so that less surface area is exposed to birds and other mammals. Both of these methods will still capture SLF effectively. To eliminate the risk of catching birds and mammals, you can use funnel-style traps that consist of mesh wrapped around the tree that leads into a container to trap SLF. Some companies may be producing these traps commercially, or you could also make your own. The mesh (e.g., plastic netting) should be wrapped around the entire circumference of the tree and funnel into a container (e.g., inverted peanut butter jar or plastic bag) with a hole in the lid to allow SLF nymphs and adults to pass through. Check and change traps at least every other week (or more often in highly infested areas). Be aware that this method may not reduce the number of nymph or adult SLF you see later in the year. PHOTO CREDIT: PA DEPARTMENT OF AGRICULTURE



## NO ELECTRONIC TRASH (E-WASTE) IN THE TRASH



**E-WASTE: DESKTOP AND NOTEBOOK COMPUTERS; COMPUTER MONITORS; AND COMPUTER PERIPHERALS** - keyboards, printer or any other device sold exclusively for external use with a computer that provides input into or output from the computer.

THESE DEVICES MAY NOT BE PLACED IN MUNICIPAL TRASH, IT IS A VIOLATION OF STATE LAW. IF ANYONE PLACES AN E-WASTE DEVICE FOR CURBSIDE TRASH PICKUP, THE HAULER WILL LEAVE THE ITEM AT THE CURB. **YOU MUST REMOVE THE ITEM FROM THE CURB IMMEDIATELY.**

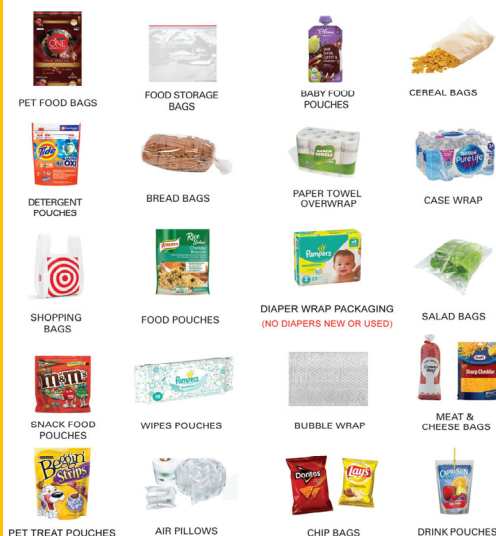
**YOU CAN DONATE THESE ITEMS AT THE GOODWILL DONATION CENTER AS PART OF DELL RECONNECT™**

**IF THE BOROUGH MUST REMOVE THE ITEM YOU WILL BE CHARGED FOR THE COST OF REMOVAL AND DISPOSAL.**

## DISPOSAL INSTRUCTIONS

- ◆ FLEXIBLE PLASTIC PACKING SHOULD BE PLACED IN A LIDDED RECYCLING CONTAINER, OTHERWISE IT MAY BLOW AWAY.
- ◆ MUST BE EMPTY, CLEAN, AND DRY
- ◆ BE PLACED LOOSE IN CONTAINER, NOT BUNDLED
- ◆ AIR PILLOWS - USED IN PACKAGING SHOULD BE DEFLATED
- ◆ NO PLASTIC CUTLERY
- ◆ NO VINYL ITEMS (ie. SHOWER CURTAINS, INFLATABLE TOYS, ETC.)
- ◆ NO HOSES, CHAINS, CORDS OR STRING

## FLEXIBLE PLASTIC PACKAGING MAY BE RECYCLED



- \* Grocery/Shopping Bags
- \* Retail Bags
- \* Pet Treat Pouches
- \* Detergent Pouches
- \* Case Wrap
- \* Shrink Film
- \* Food Storage Bags - Zip Top
- \* Snack Food Pouches
- \* Salad Bags
- \* Wipes Pouches
- \* Candy/Snack Food Pouches
- \* Baby Food Pouches
- \* Bread Bags
- \* Diaper Wrap Packaging
- \* Air Pillows
- \* Bubble Wrap
- \* Pet Food Bags
- \* Cereal Bags
- \* Paper Towel Overwrap
- \* Chip/Snack Bags
- \* Meat Bags
- \* Cheese Bags
- \* Drink Pouches

**NO DIAPERS (USED OR NEW) IN RECYCLING**

**PLACE YOUR TRASH & RECYCLING IN PLASTIC BAGS (CLEAR FOR RECYCLING) BEFORE PLACING IN YOUR LIDDED CONTAINERS IT WILL PREVENT RECYCLING & TRASH FROM LITTERING THE NEIGHBORHOOD**

**DO NOT PLACE YARD WASTE IN YOUR TRASH - THE CAN WILL BE LEFT AT THE CURB**

## TRASH/RECYCLING REMINDERS

- \* NO PIZZA BOXES IN RECYCLING, THEY ARE TRASH
- \* WHEN PLACING AT CURB, PLEASE SEPARATE YOUR TRASH CONTAINERS FROM YOUR RECYCLING CONTAINERS BY AT LEAST TWO FEET
- \* MAKE SURE YOUR RECYCLING CONTAINERS ARE MARKED (FREE STICKERS AVAILABLE AT BORO HALL)
- \* FLATTEN CARDBOARD BOXES
- \* CLEAR RECYCLING BAGS MAY BE USED TO PLACE RECYCLING CURBSIDE FOR PICKUP (NO BLACK TRASHBAGS - WILL BE TAKEN AS TRASH)



**MATTRESSES AND BOX SPRINGS MUST BE SEALED IN PLASTIC FOR REMOVAL -**

**ANY MATTRESS LEFT BY THE HAULER AT THE CURB MUST BE REMOVED IMMEDIATELY**

## WHAT YOU CAN'T RECYCLE!

- ◇ WINDOW GLASS, DINNERWARE & TEMPERED GLASS
- ◇ CERAMICS
- ◇ PIZZA BOXES
- ◇ FOOD ENCRUSTED ALUMINUM TRAYS & FOIL
- ◇ NO FOOD, WOOD OR VEGETATION
- ◇ PROPANE TANKS

## WHAT CAN YOU RECYCLE?

- Food grade glass bottles and jars (clear, brown & green)
- Aluminum & metal food cans
- Aluminum trays & foil
- Aseptic packaging & gable top containers (milk & juice cartons)
- Steel cans and tins
- Plastics #1 - #7, NO STYROFOAM
  - #1 - clear & green plastic resin - PET  
soda, milk, water and flavored beverage bottles
  - #2 - colored plastic resin - HDPE  
detergent and fabric softener containers
  - #3 - plastic resin - PVC narrow neck containers only  
health & beauty aid products, household cleaners
  - #4 - plastic resin - LPDE grocery containers  
Margarine tubs, frozen dessert cups, six and twelve pack rings
  - #5 - plastic resin - PP grocery containers  
Yogurt cups, narrow neck syrup and ketchup bottles
  - #6 - plastic resin - PS  
Aspirin bottles, compact disc cases, egg cartons
  - #7 - plastic - Other - Narrow neck containers only
- Paper and Cardboard:
  - Newspaper, including inserts
  - Magazines, catalogues and telephone books
  - Kraft (brown) paper bags
  - Office, computer, notebook and gift wrap (non-metallic) paper
  - Chipboard (cereal, cake & food mix boxes, gift boxes, etc.)
  - Carrier stock (soda & beer can carrying cases)
  - junk mail & envelopes
  - paperback books
  - cardboard - PLEASE FLATTEN

## MEMORIAL DAY TRASH CHANGE REMINDER

**TRASH/RECYCLE PICKED UP ON WEDNESDAY JUNE 1<sup>st</sup>**  
NO CHANGES FOR THE 4TH OF JULY (PICKUP ON TUESDAY)



**KEEP YOUR GRASS CLIPPINGS OUT OF THE STREET****NO DUMPING IN STORM DRAINS, CHANNELS OR WATERWAYS**

You are not permitted to dump anything into storm drains, storm channels or waterways. Grass clippings, leaves and other yard waste blown onto streets, dumped into storm drains or storm channels eventually wash into Antietam Creek. What's wrong with that? Decomposing yard waste acts as a fertilizer (great for your lawn but not for waterways), adding nutrients to the water speeding growth of plants, creating algae blooms and causing oxygen depletion making it difficult aquatic life to survive.

The Borough collects yard waste curbside weekly all year (weather permitting). See the Municipal Insert for instructions.

**WASHING YOUR CAR AT HOME?  
DO IT ON YOUR YARD!**

Outdoor car washing causes large amounts of dirt, road grime, oil and heavy metals to enter local waterways. Soapy water flows down the street into the storm drains, eventually to be flushed through the system to Antietam Creek and the Schuylkill River. If you can't use a commercial car wash, wash your care on the lawn or other pervious surface so the wash water can soak into the ground and be filtered out.

**USE LAWN FERTILIZERS AND  
HERBICIDES SPARINGLY**

Fertilizers add nutrients to Stormwater causing the same issues as grass clippings and yard waste. Herbicides and pesticides contain toxic contaminants that are harmful to aquatic organisms, humans and other animals. Use the minimum amount needed to achieve the desired result and follow the directions precisely.

**ADOPT A STORM DRAIN**

Have you noticed a storm drain clogged with leaves or trash? Have you seen how clogged storm drains can cause street flooding? Your help is needed to prevent the debris from blocking the storm drains or flowing into the Antietam Creek. Please contact Borough Hall if you see a clogged storm drain.

**POOPER SCOOP WHEN YOU WALK YOUR DOG  
AND IN YOUR YARD**

Always clean up after your dog. Pet waste left on lawns and paved surfaces can be carried by rain water or snow melt into local storm drain system, which empty into Antietam Creek. Make sure you regularly pooper scoop your yard, it is a violation of Ordinance 442- Property Maintenance Code to allow your yard and property to be kept in an unsanitary condition.

**PERMITS REQUIRED FOR WORK**

**UNIFORM CONSTRUCTION CODE (UCC) BUILDING,  
PLUMBING, ELECTRICAL AND  
MECHANICAL PERMITS - PA STATE LAW**

**Building a deck more than 30" off the ground? Rewiring or adding electric circuits? Changing fixtures (sink, toilet, bathtub or shower) in your bathroom? Replacing a roof? Installing an inflatable pool?** Pennsylvania State law requires that you, if you are doing the work yourself, or your contractor need to obtain a permit **PRIOR** to having any work completed on your property.

Depending upon the type and the complexity of the work you may need to have plans submitted for review and approval prior to having a Permit issued to complete the work. Permit applications are available online or in the Borough office. Permits are issued by the Borough's Building Code Official - State Inspection Authority Inc.

Additionally, all contractors and sub-contractors working on your property are required to obtain a **BOROUGH TRADE REGISTRATION** from the Borough office.

**GET RID OF YOUR TRASH/JUNK WEEKLY**

There is no reason to allow trash and/or junk to accumulate on your property. Residential trash collection allows for three - 32 gallon containers of trash and one bulk item per week, which can be one additional bag of trash, a mattress, sofa, etc. You are in violation of Ordinance 442 - Property Maintenance Code if you accumulate junk on your property.

**NOISE ORDINANCE**

**Be kind to your neighbors. Your taste in music is not necessarily that of your neighbors.** Your music or any other noises, should not cross the property line or occur from 10:00 PM until 7:00 AM, this includes power tools, revving of engines, yelling, shouting, singing, etc.

You are not allowed to operate construction equipment at any time on a **SUNDAY** or **HOLIDAY** (which can be heard on neighboring properties.)

**NEW SWIMMING POOL - PERMITS REQUIRED**

**ALL SWIMMING POOLS THAT HOLD MORE THAN 24 INCHES OF WATER REQUIRE CONSTRUCTION PERMITS - INCLUDING INFLATABLE POOLS**

**THE PLACEMENT OF A POOL REQUIRES  
BOROUGH ZONING APPROVAL**

**NEW REGULATIONS FOR OPEN BURNING INCLUDING FIRE PITS, ETC**

**ORDINANCE #450 ADOPTED MARCH 10, 2022 (AVAILABLE ON THE BOROUGH WEBSITE)**

- 1. Fire pits, fire rings, outdoor fireplaces and chimineas are permitted so long as they FOLLOW THE RULES AND REGULATIONS OF ORDINANCE #450. Some of the rules: SPARK ARRESTOR in place during use, have a RESPONSIBLE ADULT PRESENT AT THE FIRE ALL TIMES, HAVE THE MEANS AT THE FIRE TO EXTINGUISH THE FIRE, BE A MINIMUM OF 10 FEET FROM A BUILDING AND EXTINGUISH THE FIRE WHEN DONE.**
- 2. ONLY WOOD MAY BE BURNED. ANY OTHER MATERIALS ARE AN ENFORCEABLE VIOLATION.**
- 3. Don't cause a nuisance. If asked by your neighbor to put out your fire, do it. Your neighbor doesn't want to smell your fire pit.**
- 4. Before lighting your fire, check weather conditions. Don't burn if it is windy, UNDERNEATH TREES, if the ground is excessively dry or if there is low cloud cover.**

**THE BURNING OF BRUSH IS ONLY ALLOWED ON FARM PROPERTY WITH A PERMIT**



## Central Berks Regional Police Department

Raymond R Serafin - Chief of Police

2147 Perkiomen Avenue, Reading, PA 19606

Hours 8 AM - 4 PM

610-779-1100 (Office) 610-779-7135 (Fax)

Call with complaints or questions.

**To contact a Central Berks Officer for a non-emergency situation call 610-655-4911.**

- ♦ DON'T DRINK AND DRIVE - BUCKLE UP! IT'S THE LAW - DON'T TEXT WHILE DRIVING
- ♦ LOCK YOUR VEHICLES PARKED IN YOUR DRIVEWAY AND ON THE STREET - DON'T LEAVE CHANGE OR OTHER ITEMS VISIBLE TO THIEVES WALKING BY
- ♦ All vehicles must have current registration and inspection in order to park on a public street; otherwise they are considered abandoned and are subject to towing and fines.
- ♦ Going on vacation? Notify the police department, and the officers will be sure to patrol the area while you are away. Tell your neighbors to report anything suspicious immediately.
- ♦ Prepare your vehicle for the winter. Remove all snow and ice from the vehicle before you drive.
- ♦ As you drive, watch for children walking to or from the school bus, playing outdoors and riding wheeled vehicles.
- ♦ Car Seat Safety Check - Call the office to schedule an appointment
- ♦ Some other services provided by the Police Department are fingerprinting, Notary seal services, passport photos, and security services. Inquire at the office.
- ♦ Remember windows are open, enjoy the outdoors, but keep your noise level down after 10 PM!
- ♦ As you drive, watch for children playing outdoors and riding wheeled vehicles.
- ♦ You may not like my music and I may not like your music - keep the music on your property.

Remember, residents and the police are one team, we need to work together to keep our community safe. If you see something that does not seem or feel right please call 911 so we can check it out. It is better to be safe than to be sorry.

## PRIMARY ELECTION MAY 17<sup>th</sup> - POLLS OPEN 7 AM - 8 PM

**IN PERSON VOTING IS AT THE ST. LAWRENCE BOROUGH HALL - 3540 SAINT LAWRENCE AVE**

**BUILDING ENTRY: REAR DOOR FROM PARKING LOT**

**LAST DAY TO REGISTER TO VOTE: MAY 2<sup>nd</sup>**

**LAST DAY TO APPLY FOR MAIL-IN OR CIVILIAN ABSENTEE BALLOT: MAY 10<sup>th</sup>**

**LAST DAY FOR COUNTY BOARD OF ELECTIONS TO RECEIVE MAIL-IN OR ABSENTEE BALLOTS: MAY 17 (8:00 PM)**

**YOU CAN REGISTER ONLINE AT [WWW.PAVOTERSERVICES.PA.GOV](http://WWW.PAVOTERSERVICES.PA.GOV)**

### COMMUNITY GARDEN SPACE AVAILABLE

The Borough provides 12 garden plots at the St. Lawrence Playground on Jacksonwald Ave. for Community Gardens. Currently there is one open bed. Please contact Marianne Lubenow (610-779-3632) if you are interested in gardening at this site.

**EMPLOYMENT OPPORTUNITY:** 8 week - Playground Leader - must be 18 years or older and a High School graduate. Responsible for supervising participants, organizing & leading activities for youth ages 3 - 16; promoting fair play, honesty and politeness, maintain rules and safety standards at all times and perform light cleaning duties and trash removal. Contact the Borough Office @ 610-779-1430, if interested.

## SUMMER PLAYGROUND PROGRAM

The Borough provides a staffed summer playground program on the municipal playground at 3500 Jacksonwald Avenue. We anticipate an 8 week program beginning on June 13<sup>th</sup> and ending on August 5<sup>th</sup>. The playground is closed on the 4<sup>th</sup> of July. Staffed operating hours: 9 AM - Noon and 6 PM - 9 PM, weather permitting. Children 6 years of age and under must be accompanied by an adult or babysitter - 16 years of age or older. Activities include arts & crafts, sports, games and events

More information and registration information will be on the Borough website and in the next newsletter.



May 2022

June 2022

Sunday	Monday	Tuesday	Wednesday	Thursday	Friday	Saturday
			1	2	3	4
		YARD WASTE	TRASH/RECYCLE			
5	6	7	8	9	10	11
	YARD WASTE	TRASH/RECYCLE		BOROUGH COUNCIL 7:30 PM		
12	13	14	15	16	17	18
	YARD WASTE	TRASH/RECYCLE				
	PLAYGROUND OPENS					
19	20	21	22	23	24	25
	YARD WASTE	TRASH/RECYCLE	PLANNING COMMISSION 7:30 PM			
26	27	28	29	30		
	YARD WASTE	TRASH/RECYCLE				
		PLANNING COMMISSION MEETS 4th WEDNESDAY OF THE MONTH IF THERE IS BUSINESS				

Sunday	Monday	Tuesday	Wednesday	Thursday	Friday	Saturday
					1	2
3	4 Independence Day OFFICE & PLAYGROUND CLOSED	5 NO YARD WASTE	6 TRASH/RECYCLE	7	8	9
10	11 YARD WASTE	12 TRASH/RECYCLE	13	14 BOROUGH COUNCIL 7:30 PM	15	16
17	18 YARD WASTE	19 TRASH/RECYCLE	20	21	22	23
24	25 YARD WASTE	26 TRASH/RECYCLE	27 PLANNING COMMISSION 7:30 PM	28	29	30
31		PLANNING COMMISSION MEETS 4th WEDNESDAY OF THE MONTH IF THERE IS BUSINESS NO YARD WASTE COLLECTION ON JULY 5th				

## August 2022

Sunday	Monday	Tuesday	Wednesday	Thursday	Friday	Saturday
	1 YARD WASTE	2 TRASH/RECYCLE	3	4	5 LAST DAY OF PLAYGROUND	6
7	8 YARD WASTE	9 TRASH/RECYCLE	10	11 BOROUGH COUNCIL 7:30 PM	12	13
14	15 YARD WASTE	16 TRASH/RECYCLE	17	18	19	20
21	22 YARD WASTE	23 TRASH/RECYCLE	24 PLANNING COMMISSION 7:30 PM	25	26	27
28	29 YARD WASTE	30 TRASH/RECYCLE	31			
		PLANNING COMMISSION MEETS 4th WEDNESDAY OF THE MONTH IF THERE IS BUSINESS				

## September 2022

Sunday	Monday	Tuesday	Wednesday	Thursday	Friday	Saturday
				1	2	3
4	5 Labor Day OFFICE CLOSED	6 YARD WASTE	7 TRASH/RECYCLE	8 BOROUGH COUNCIL 7:30 PM	9	10
11	12 YARD WASTE	13 TRASH/RECYCLE	14	15	16	17
18	19 YARD WASTE	20 TRASH/RECYCLE	21	22	23	24
25	26 YARD WASTE	27 TRASH/RECYCLE	28 PLANNING COMMISSION 7:30 PM	29	30	
		PLANNING COMMISSION MEETS 4th WEDNESDAY OF THE MONTH IF THERE IS BUSINESS LABOR DAY CHANGE: YARD WASTE TUESDAY SEPTEMBER 6 AND TRASH WEDNESDAY SEPTEMBER 7				

# BOROUGH OF ST. LAWRENCE MUNICIPAL INFORMATION

3540 St. Lawrence Ave.  
Reading PA 19606  
Telephone: 610-779-1430  
Fax: 610-779-9148  
Email: stlawboro@ptd.net

Website: [www.stlawboro.com](http://www.stlawboro.com)  
An answering machine is available when we are closed, away from our desks or on the other line. Please leave a message and we will return your call at our first opportunity.

Office Hours:  
Monday - Thursday  
8:30 AM - 2:30 PM  
Friday  
8:30 AM - Noon

## EMERGENCY: 9-1-1 County 911 Dispatch Non Emergency - 610-655-4911

To report any incident which adversely affects the health and safety or the environment of the citizens of the Commonwealth:

### DEP 24/7/365 ENVIRONMENTAL EMERGENCY RESPONSE - 1-800-541-2050

To report any discharge to the storm drain system, sanitary sewer system or waterways that is not the result of hydrant flushing, fire fighting or a rain event: **SANITARY SEWER EMERGENCY OR ILLICIT DISCHARGE: CALL BOROUGH HALL OR AFTER HOURS CALL DERREK RHOADS OR ALLISON LEINBACH (NUMBERS BELOW)**

#### Borough Officials - Appointed

##### **Manager/Treasurer/Zoning & Codes Officer**

Allison Leinbach Office: 610-779-1430  
Home: 610-779-0112  
Cell: 610-207-8469

##### **Secretary/Asst. Codes & Asst. Zoning Officer**

Susan Eggert Office: 610-779-1430  
Cell: 484-269-0749

##### **GIS/MS4, Roadmaster & Asst. Codes Officer**

Derrek Rhoads Cell: 484-577-9981

##### **YARD WASTE PICKUP TEXT MESSAGE**

Leave message Cell: 610-655-5243

##### **Borough Engineer/ Asst. - Codes & Zoning Officer**

Ty Leinneweber, PE - Systems Design Eng.  
610-916-8500

##### **Borough Solicitor**

Joan London, Esq. - Kozloff Stoudt  
610-670-2552

##### **UCC Building Codes Inspectors/Asst - Codes & Zoning**

State Inspection Authority, Inc.  
610-450-4600

##### **Sewer Engineer**

Kevin Conrad - SSM Group 610-621-2000

##### **Central Berks Regional Police**

Ray Serafin, Chief Office: 610-779-1100

##### **Emergency Management Coordinator**

David W. Eggert 484-797-5615

#### **Borough Appointed Board/Commission**

##### **Planning Commission**

Warren Lubenow, Chairman  
Joseph Ravert, Vice- Chairman  
Barry Kinsey  
James Lewars  
Tracy Whitman

##### **Zoning Hearing Board**

Dave Smith, Chairman  
Dorothy Jurasinski  
Kristen Livingood

#### **2022 Borough Officials- Elected**

##### **Mayor**

Barrie C. Kinsey 610-779-1430

##### **Borough Council**

Robert J. May, President 610-370-1236  
rjmay@aol.com  
David W. Eggert, VP 484-797-5615  
Mike Bennethum 610-779-9645  
Michael Fritz 610-587-9794  
Steven Geibel 610-370-5361  
Warren Lubenow 610-779-3632  
Gregory Zawilla 610-370-1519

##### **Tax Collector**

Susan D. Eggert 610-779-1430

#### **School District**

Exeter Township SD Admin 610-779-0700  
Exeter Twp Sr High School 610-779-3060  
Exeter Twp Jr High School 610-779-3320  
Reiffton School 610-779-7640  
Jacksonwald Elementary 610-779-1820  
Owatin Creek 610-406-4580

#### **District Judge Court 23-2-03**

Hon. Sandra L Fegley 610-779-5137  
6112 Perkiomen Ave Fax: 610-779-4681  
Birdsboro PA 19508  
Hours: Monday - Friday 9:00 AM to 5:00 PM

#### **Utilities**

**Mt. Penn Water 610-779-4900**  
**They also handle sewer billing for the Borough.**  
AVMA 610-779-0150  
PA American Water 1-800-565-7292  
Met-Ed (Electric) 1-800-545-7741  
UGI (Gas) 610-375-4441  
Service Electric (Cable) 610-582-5317  
PA ONE CALL (Call before you dig) 811  
J. P. Mascaro 1-800-334-3403

#### **Legislators**

##### **STATE**

##### **PA House District 126**

Hon. Mark Rozzi  
**District Office**  
4933 Kutztown Road 610 - 921-8921  
Temple, PA 19560 Fax: 610 - 921-9369

##### **Capitol Office**

111 Irvis Office Bldg 717 - 783-3290  
PO Box 202126 Fax: 717 - 787-7517  
Harrisburg, PA 17120-2126

##### **Senate District 11**

##### **Senator Judith Schwank**

**Capitol Office**  
Senate Box 203011 717 - 787-8925  
457 Main Capitol BLDG FAX: 717 - 772-0578  
Harrisburg, PA 17120-3011

##### **District Office**

210 George Street 610 - 929-2151  
Suite 201 FAX: 610 - 929-2576  
Reading, PA 19605

#### **FEDERAL**

##### **US House District 6**

##### **Rep. Chrissy Houlahan**

**Washington DC Office**  
1218 Longworth HOB 202 - 225-4315  
Washington DC 20515 Fax: 202 - 225-8440

##### **Berks County Office -**

815 Washington St, 2-48 610-295-0815  
Reading PA 19601

#### **US Senate**

##### **Sen. Robert P. Casey Jr**

**Washington DC Office**  
393 Russell Senate Office Bldg  
Washington DC 20510  
Toll Free: 866 - 802-2833 Fax: 202 - 228-0604

##### **Lehigh Valley Office**

840 W Hamilton St. STE 301 610 - 782-9470  
Allentown PA 18101 Fax: 610 - 782-9474

##### **Sen. Patrick J Toomey**

**Washington DC Office**  
455 Dirksen Senate Office Bldg  
Washington DC 20510  
202 - 224-4254 Fax: 202 - 228-0284

##### **Lehigh Valley Office**

1150 S Cedar Crest Blvd STE 101  
Allentown PA 18101  
610-434-1444  
Toll Free: 855 - 552-1831 Fax: 202-228-2727

#### **Municipal Governments**

Amity Township (610)689-6000  
Exeter Township (610)779-5660  
Lower Alsace Township (610)779-6400  
Mt. Penn Borough (610)779-5151

#### **Libraries**

Exeter Community (610)406-9431  
Reading Public Library-Main (610)655-6350  
Reading Public Library-SE Branch (610)655-6362

#### **County Government Office**

Services Center (General) (610)478-6100  
Aging (610)478-6500  
Assessment (610)478-6262  
Berks Heim (610)376-4841  
CareerLink (610)988-1300  
Children & Youth Service (610)478-6700  
Clerk of Courts (610)478-6550  
Commissioners (610)478-6136  
Domestic Relations (610)478-2900  
Election Services (610)478-6490  
Emergency Services (610)374-4800  
Parks & Recreation (610)372-8939  
Prothonotary (610)478-6970  
Public Defender (610)478-6650  
Recorder of Deeds (610)478-3380  
Register of Wills (610)478-6600  
Sheriff (610)478-6240  
Tax Claim (610)478-6625  
Treasurer (610)478-6640  
Veterans Affairs (610)378-5601

#### **State Government**

Autism Services 1(866)539-7689  
COMPASS/Benefits Helpline 1(800)692-7462  
Berks Cty Assistance Office 1(866)215-3912  
Childline 1(800)932-0313  
CHIP Helpline 1(800)986-5437  
Consumer Protection 1(800)441-2555  
Disability Services 1(800)753-8827  
Elder Abuse 1(800)490-8505  
Healthy Baby 1(800)986-2229  
Healthy Kids 1(800)986-5437  
Lead Information Line 1(800)440-5323  
LIHEAP (Home Heating) (610)736-4228  
Welfare Fraud Tipline 1(844)347-8477



## TRASH/RECYCLING COLLECTION

CURBSIDE ON TUESDAYS BY J P MASCARO & SONS: 1-800-334-3403

TRASH: 3-32 GAL CONTAINERS OR EQUIVALENT (MAX SIZE CONTAINER - 64 GALLON) AND 1 BULK ITEM  
**MATTRESS MUST BE WRAPPED IN PLASTIC & SEALED WITH TAPE**

RECYCLING: UNLIMITED SINGLE STREAM

- \* PLEASE SEPARATE TRASH AND RECYCLING CONTAINERS BY AT LEAST ONE FOOT
- \* FLATTEN CARDBOARD BOXES
- \* SEE BOROUGHS WEBSITE FOR NEW INSTRUCTIONS FOR RECYCLING FLEXIBLE PLASTIC PACKAGING AND MATTRESSES



The Goodwill donation center in St. Lawrence accepts computers and related accessories. Residential donors can drop off any brand of used

computer equipment including monitors, desktops, laptops, printers, scanners, keyboards, mice and speakers in any condition at a Goodwill donation center. It's free and donors can receive a receipt for tax purposes.

**PHARMACEUTICAL DROP BOX AVAILABLE AT  
 CENTRAL BERKS REGIONAL POLICE OFFICE  
 2147 PERKIOMEN AVE., MT. PENN**



Accepted: Prescription medication in standard container or sealed bag, over the counter medication, vitamins, drug samples, pet medications and liquid medications in plastic, leak proof containers.

## CURBSIDE BRUSH & LEAF Information and Requirements

1. Yard waste must be in a paper recycle bag. Plastic bags will be left at the curb and must be removed.
2. **PLEASE LIMIT THE WEIGHT OF BAG TO 25 LBS.**
3. **Only vegetative yard waste may be placed in the recycle bag. If there are any issues - you will receive a door tag that states the problem. Any violations of bag content will result in being permanently removed from the pickup list**
4. Bundled branches 6' in length or less and able to be picked up by one person AND NOT FALL APART. **Limit of 3 bundles OR limbs without prior authorization from the Borough.**
5. Excessive quantities will not be picked up without prior approval.
6. **DO NOT PLACE ANY BAGS, BUNDLES, OR ANY OTHER VEGETATION IN THE STREET**
7. **You may leave a message on the yard waste answering machine @ 610-401-0568 THROUGH SUNDAY EVENING FOR THAT WEEK'S PICKUP. DO NOT EMAIL THE OFFICE. OR**
8. **You may call the Borough office @ 610-779-1430 by 8:30 AM the morning of pickup to be added to the list, LEAVE A MESSAGE IF NO ONE ANSWERS. OR**
9. **TEXT MESSAGE: (610) 655-5243 - INCLUDE YOUR ADDRESS AND THE NUMBER OF BAGS OR BUNDLES TO BE COLLECTED**

**WEEKLY CURBSIDE PICKUP -  
 MONDAYS \*- Weather Permitting**

**\*Tuesday Pickup Holidays: 05/31/2022, 07/05/2022  
 And 09/**

**YOU MUST CONTACT BORO HALL TO BE PLACED ON  
 THE LIST FOR PICKUP.**

**DO NOT PLACE BAGS AT CURB UNTIL  
 THE MORNING OF PICKUP.**

## ELECTRONICS & TIRE RECYCLING CENTER

1316 HILLTOP RD., LEESPORT

OPEN EVERY TUESDAY, THURSDAY & SATURDAY: 8AM - NOON

ALL VISITORS MUST REMAIN IN THEIR CAR, WHILE ON SITE.

### ELECTRONIC ITEMS ACCEPTED:

PLEASE HAVE ALL ELECTRONICS IN THE TRUNK OF YOUR CAR OR BED OF PICKUP TRUCK

### **MAXIMUM OF 10 ITEMS PER VEHICLE (NO EXCEPTIONS)**

- \* Computers, Monitors, Laptops, Keyboards, Modems, Printers, Copier, etc.
- \* Microwaves, Stereos, VCRs, Telephones, Answering Machines, etc.
- \* Television ( Maximum of two per resident/vehicle per day )
- \* Fluorescent bulbs
- \* Rechargeable and Lead Acid Batteries (ONLY) – NO ALKALINE BATTERIES
- \* Air Conditions & Dehumidifier

### FEE SCHEDULE 2022

#### RESIDENTIAL

- |   |                |
|---|----------------|
| • All Electronic Items (Residents ONLY)                 | Free of Charge |
| • Fluorescent tubes, CFL Bulbs & Rechargeable Batteries | Free of Charge |
| • Air Conditioners & Dehumidifiers                      | Free of Charge |

#### COMMERCIAL INSTITUTIONAL - BY APPOINTMENT ONLY

- |   |                |
|---|----------------|
| • NO TELEVISIONS OR MONITORS ACCEPTED FROM BUSINESSES |                |
| • ALL ELECTRONIC ITEMS (BUSINESSES)                   | \$1.00 /item   |
| • FLUORESCENT TUBES, CFL'S & RECHARGEABLE BATTERIES   | \$1.50 /pound  |
| • AIR CONDITIONERS & DEHUMIDIFIERS                    | Free of Charge |

### AUTOMOTIVE TIRE ONLY - FOUR (4) PER VEHICLE MAXIMUM

- \* Standard passenger and light truck tires shall have diameter between twenty inches (20") and thirty-two inches (32") and a width between six inches (6") and twelve inches (12") and shall be free of dirt, water and foreign objects.
- \* The tires must not be deformed and must have the normal geometry of a typical tire.

#### FEE SCHEDULE

- |                      |              |
|----------------------|--------------|
| * Tires without rims | \$ 2.00 each |
| * Tires with rims    | \$ 3.00 each |

For Additional Information: Berks County Solid Waste Authority  
[www.co.berks.pa.us/swa](http://www.co.berks.pa.us/swa) or 610-478-6362

## TROUT RUN BRUSH DEPOSITORY

The Trout Run Brush Depository is a joint project of Exeter Township and the Borough and managed by the Township Highway Crew. The facility, located at the intersection of W. Neversink and E. Neversink Roads, accepts brush, grass clippings and Christmas trees only.

The facility is monitored by cameras 24/7 and entry/exit requires an access card to open the gate. There is a \$10 annual fee for an access card and are available by application at the Exeter Township Municipal Building. There is a limit of one card per household and proof of residency or ownership is required. If Access card is lost or stolen, please notify EXETER TOWNSHIP and the card will be deactivated. To replace a card, the fee is \$10 and the previously issued card will be deactivated.

Landscaping companies doing work on residents' properties are not permitted to use Trout Run. Dumping construction debris or trash of any kind is expressly prohibited and carries a fine of up to \$600 per offense.

**Operating Hours: 8 AM - 8 PM**

Times are subject to change without notice

**GATES WILL LOCK PRECISELY AND YOU MUST BE OUTSIDE THE  
 GATE OR YOU WILL BE LOCKED IN!**



### **STREET LIGHT OUT**

If you see any street lights that are out please call Borough Hall with the 10 DIGIT Pole Number



### **NEED FOOD ASSISTANCE**

Not sure where to go when you need help?  
 Call HELPING HARVEST @ 610-926-5802 x 206 to be guided to food assistance.

## **STOP ILLEGAL DUMPING**

