

Perspectives on “Going Digital”



Moderators:

Craig Harclerode



Rich Frogge



Panelists:

Sam Hoover



Marko Govani



Andres Johnson



Marc Hornbrook



Marko Leon





AT DCP MIDSTREAM,
WE ARE AN ENERGY COMPANY THAT CONNECTS RESOURCES TO END-USE MARKETS. WE LEVERAGE OUR STRATEGIC FOOTPRINT OF ASSETS AND ARE A LEADING FULL-SERVICE MIDSTREAM LOGISTICS PROVIDER.

COMPANY
Industry-leading footprint of integrated natural gas gathering and processing and downstream assets.

INVESTORS
Executive Management, Board of Directors, events, and presentations.

SAFETY & SUSTAINABILITY
Committed to operating reliably and safely.

CAREERS
Committed to the country's energy needs.

THE DCP 2.0 STORY
TRANSFORMING OUR BUSINESS AND CHANGING THE WAY WE WORK.

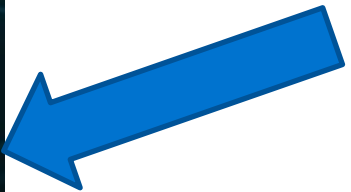


Bill Johnson

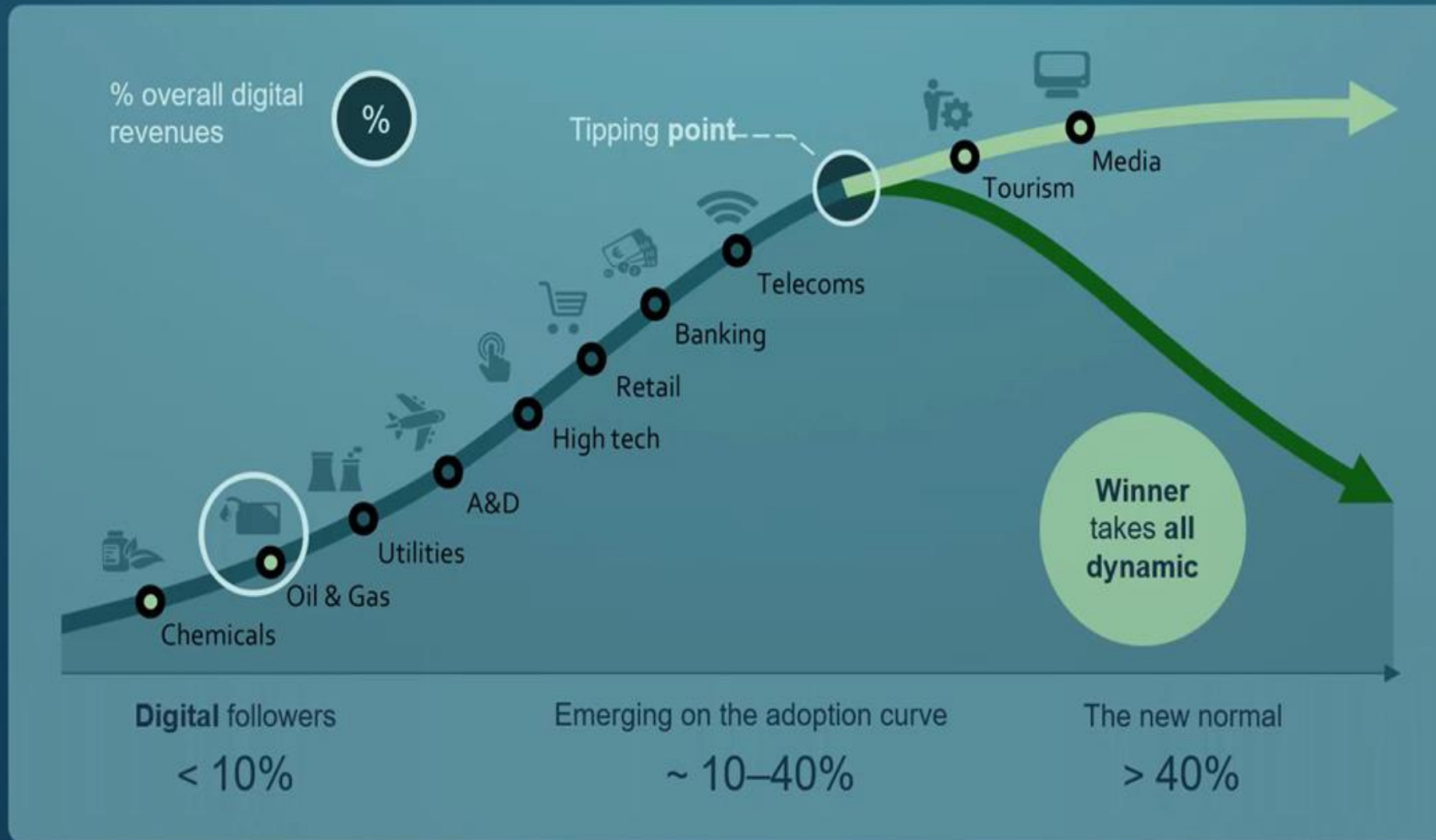
Group Vice President and Chief Transformation Officer

Bill Johnson is group vice president and chief transformation officer for DCP Midstream accountable for information technology, operations technology, digital solutions and the company's integrated collaboration center. [more...](#)

The DCP 2.0 Story Video



Oil & Gas industry lags behind on adopting technology



Data and analytics are creating clear winners and losers across industry

Implies opportunities for new entrants or incumbents to create a competitive advantage

Source: McKinsey & Company

DCP 2.0 Driving the Operations of the Future



INTEGRATED COLLABORATION CENTER (ICC) LINKING NUMEROUS DATA SOURCES

Integrated Collaboration Center

- Integrated Collaboration Center continues to gain momentum with functionality and more plants being added
- Focus expanding to the field including DCP's large infrastructure of pipelines and compressors
- Moving towards 24/7 monitoring for major field assets by the end of Q3 2018

Illustrative DCP 2.0 Benefits

- Collaborative and real-time decision making for asset optimization translating to better reliability, margin and cost benefits
- Digital solutions, process optimization and predictive analytics driving cost savings through workforce efficiencies
- Sand Hills Q1 2018 optimization resulting in 35 MBpd incremental capacity
- Robotics process automation utilized to automate and streamline processes in corporate functions

Real-time decisions

Better reliability and safety

Asset optimization

Higher margins

Cost savings

Transforming through process optimization and digitization

Sam Hoover  **ONEOK**

Opening Data Lakes

- BI tools
- The PI System as an enterprise tool
- Data Integrations

Going Mobile

First Wave

- PI Vision
- GIS tools
- Electronic Forms

Second Wave and beyond

- Mass deployment of mobile devices
- Corp App store
- Updating outdated applications & processes

Governance

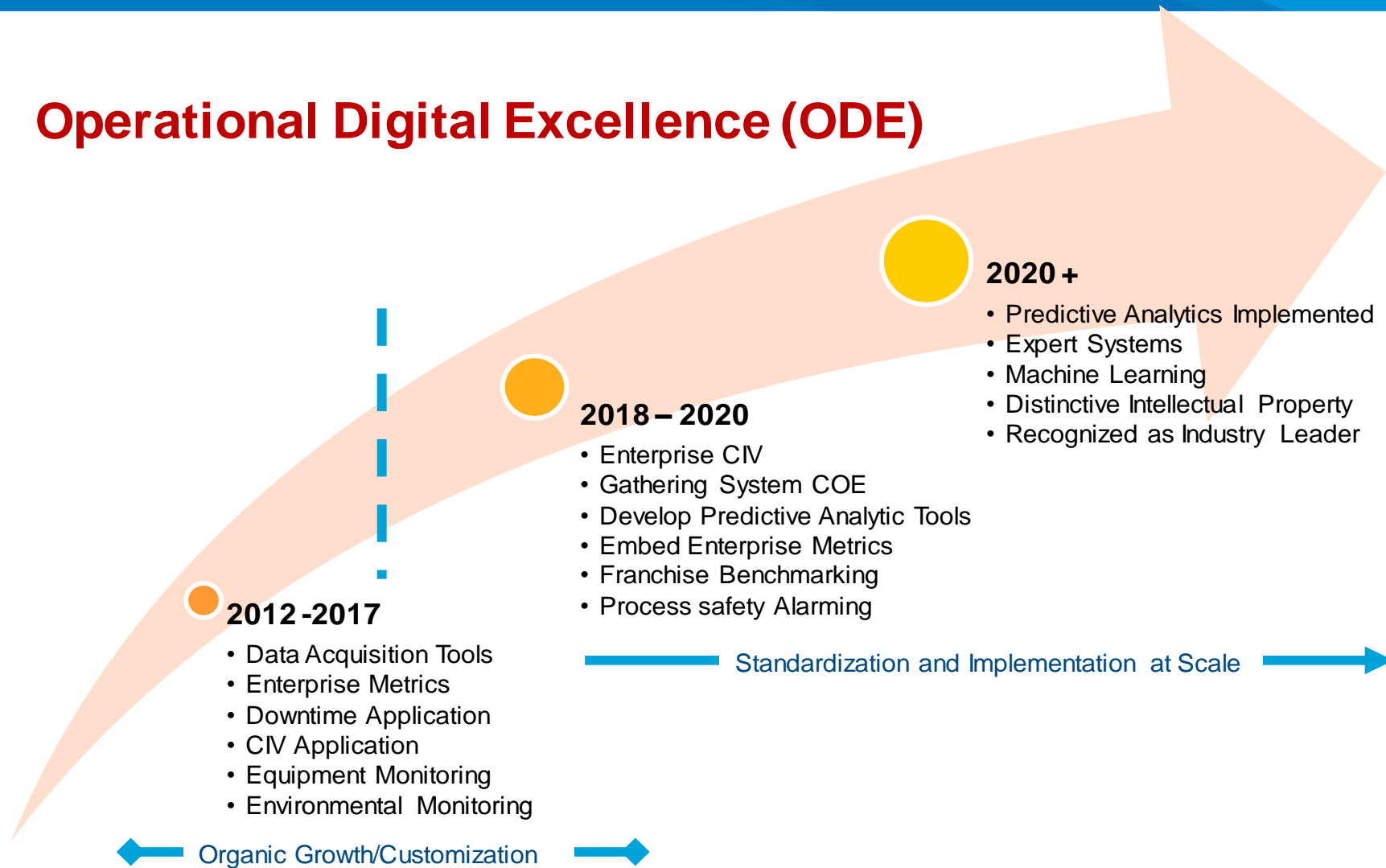
- Master Data Management
- Capability Working Groups

Andres Johnson **KINDER**  **MORGAN**
INC.

Marc Hornbrook  ***Williams***[®]

Williams Digital Journey

Operational Digital Excellence (ODE)



Marko Govani



Your natural gas company

Marko Leon

Solar[®] Turbines

A Caterpillar Company



Solar[®] DIGITAL

2019 GAS/ELECTRIC PARTNERSHIP

Marco Leon

Solar DIGITAL



We proudly deliver the digital technology solutions that enable customer success.



InSight Platform

COMPLETE END-TO-END SOLUTION



Deliver
Purpose Built User interfaces

Transform
Data Infrastructure

Connect
INSIGHT  **CONNECT**

InSight Platform

Collaborative Partner Ecosystem

Solar[®] DIGITAL



InSight Platform Equipment Health Management

Maximize Uptime

Lower Life Cycle Cost

Proactive Support



Your Team

Fleet Manager

Solar Team



Measurable
Performance



Risk
Sharing



Predictive
Analytics



Real Time
Troubleshooting



Condition Based
Maintenance &
Overhaul



Operational
Support



INSIGHT  **CONNECT**



16+ Years of Customer Success



Optimizing site operations



22.6 MW

0.4 MW

Solar Digital What's Next



Data to Economic Value



Secure Expanded
Data Acquisition



Beyond the
Package



Physical Data Collection &
Augmented Reality



Next Generation Analytics

An aerial photograph of a construction site, showing a complex network of steel beams and concrete structures. The image is overlaid with a semi-transparent blue filter. In the center, the text "Q & A" is written in a large, white, stylized font with a slight shadow effect.

Q & A