



No.67
Ridgeway | Long Ashton | North Somerset | BS41 9EZ

FINE & COUNTRY



Situation - 67 Ridgeway Road is a bespoke designed five bedroom family home of significant proportions with a generously sized garden set in the heart of this highly sought after village. The property boasts a superb location for those who enjoy recreation with Ashton Court on the door step – with its mountain bike trails, deer park and public golf course, and Bristol and Clifton golf club just around the corner. Clifton village is a short drive away renowned for its restaurants, cafes delis and eclectic range of shops.

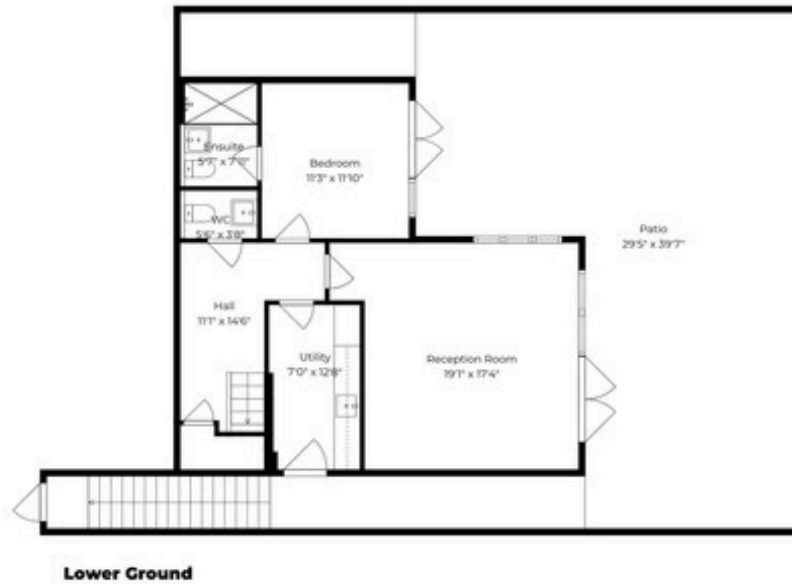
The village offers excellent everyday amenities including a supermarket, post office, bakery, cafés, farm shop and pubs. Education options are superb, with convenient access to leading independent schools such as The Downs School, Clifton College and QEH, alongside strong state primary and secondary schools within North Somerset.

Long Ashton remains one of the most sought-after residential areas on the edge of Bristol, offering a rare balance of village tranquility and countryside living. The property lies 3.3 miles from Bristol City Centre and approximately 4.2 miles from Bristol Temple Meads, with direct rail services to London Paddington from around 1 hour 20 minutes, depending on the service. Bristol Airport is just 5.4 miles from the property, offering extensive domestic and international routes.

This stunning family home is a masterclass in contemporary and luxury family living and being sold with no-chain. This is a rare opportunity not to be missed.







£1,595,000

Council Tax Band: TBC

EPC Rating: A

Tenure: Freehold



Ross Coombs-Leigh
Associate

follow Fine & Country Bristol on



Fine & Country Bristol
15 Portland Street, Clifton, Bristol, BS8 4JA
0117 298 0976 | Ross.Coombs-Leigh@fineandcountry.com

