



## PROPERTY REPORT

27561 SAYERS CR  
Maple Ridge  
V2W 1N3  
Canada

PID: 005-585-538

JULY 6, 2025



MAGNOLIA

# MICHELE CUMMINS

Personnal Real Estate Corporation

MicheleCummins.ca



778.885.4659  
mcummins@remax.net

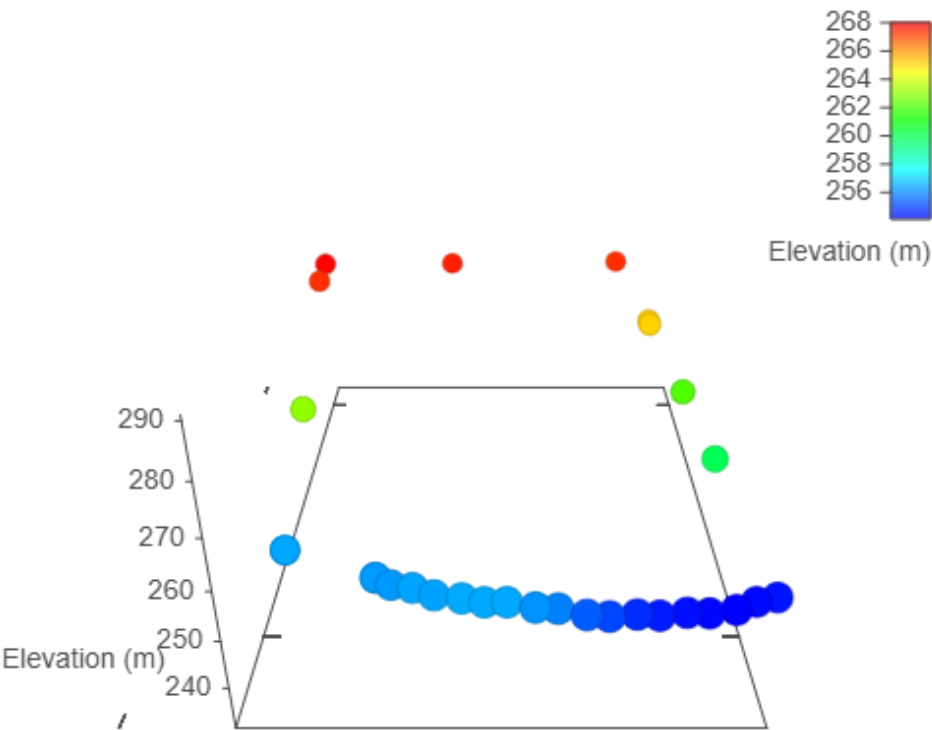




Estimated Lot Dimensions and Topography



The lot dimensions shown are estimated and should be verified by survey plan.



Max Elevation: 268.01 m | Min Elevation: 254.09 m | Difference: 13.91 m

## Detailed Tax Report

## Property Information

Prop Address	27561 SAYERS CR	Jurisdiction	DISTRICT OF MAPLE RIDGE
Municipality	DISTRICT OF MAPLE RIDGE	Neighborhood	WHONNOCK
Area	MAPLE RIDGE	SubAreaCode	VMRNE
PropertyID	005-585-538	BoardCode	V
PostalCode	V2W 1N3		

## Property Tax Information

TaxRoll Number	0539101291	Gross Taxes	\$8,141.87
Tax Year	2024	Tax Amount Updated	10/10/2024

## More PIDS

005-585-538

## More PIDS2

## Legal Information

PlanNum	Lot	Block	LotDist	LandDist	Section	Twndship	Range	Meridian
NWP57415	52		6881	36				

## Legal FullDescription

LOT 52, PLAN NWP57415, DISTRICT LOT 6881, GROUP 1, NEW WESTMINSTER LAND DISTRICT

## Land &amp; Building Information

Width		Depth
Lot Size	2.25 ACRES	Land Use
Actual Use	2 ACRES OR MORE (SINGLE FAMILY DWELLING, DUPLEX)	
Year Built	1981	
BCA Description	1 STY SFD - AFTER 1960 - STANDARD	Zoning
WaterConn		
BCAData Update	04/16/2025	

## Supplementary Property Info

BedRooms	4	Foundation	CRAWL
Full Bath	2	Half Bath2	0
Half Bath3	0	Stories	1.00
Pool Flg		Carport	
Garage S		Garage M	

## Actual Totals

Land	Improvement	Actual Total
\$1,374,000.00	\$562,000.00	\$1,936,000.00

## Municipal Taxable Totals

Gross Land	Gross Improve	Exempt Land	Exempt Improve	Municipal Total
\$1,374,000.00	\$562,000.00	\$0.00	\$0.00	\$1,936,000.00

## School Taxable Totals

Gross LandSch	Gross ImproveSch	Exempt LandSch	Exempt ImproveSch	School Total
\$1,374,000.00	\$562,000.00	\$0.00	\$0.00	\$1,936,000.00

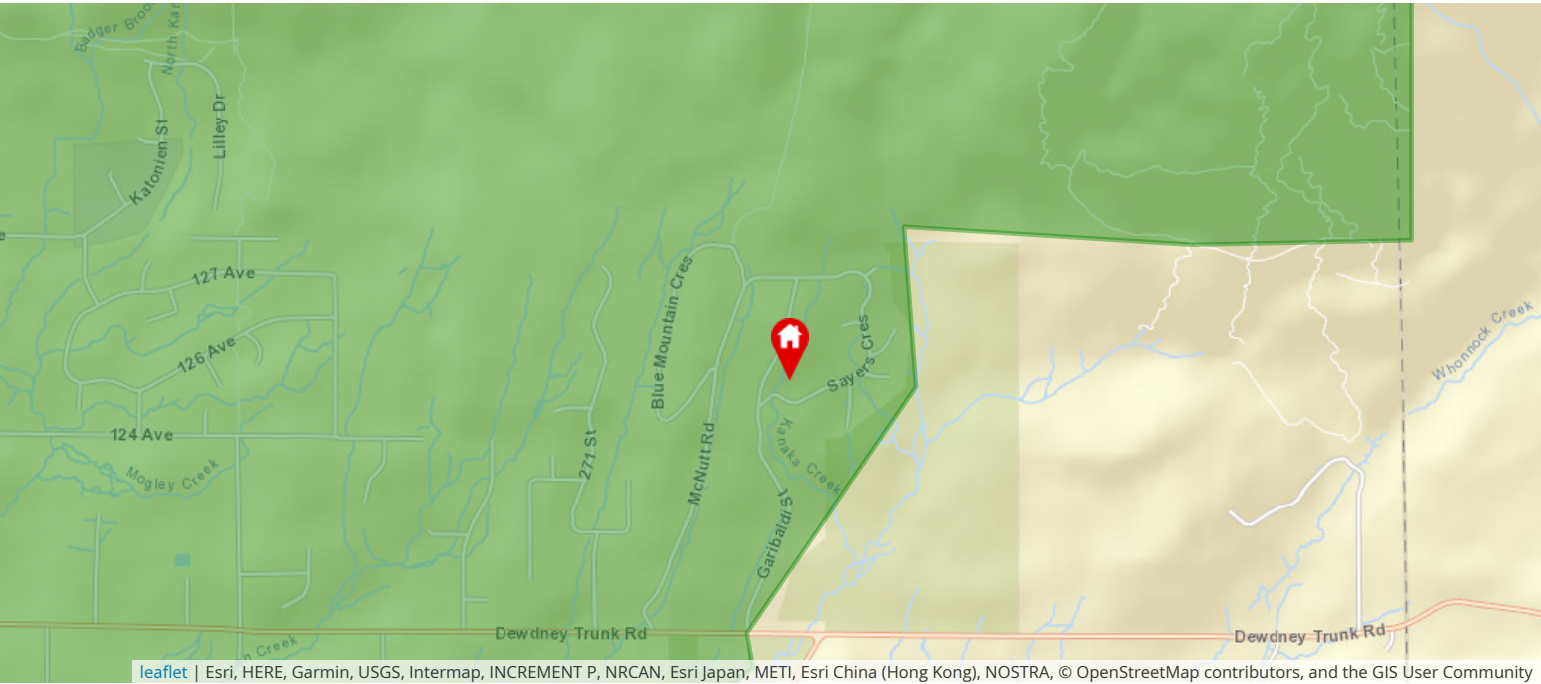
## Sales History Information

Sale Date	Sale Price	Document Num	SaleTransaction Type
6/26/2023	\$1,850,000.00	CB714130	IMPROVED SINGLE PROPERTY TRANSACTION
7/29/2018	\$1,060,000.00	CA6964160	IMPROVED SINGLE PROPERTY TRANSACTION
3/28/2018	\$0.00	CA6707633	REJECT - NOT SUITABLE FOR SALES ANALYSIS



Nearest Schools

Nearby Elementary Schools

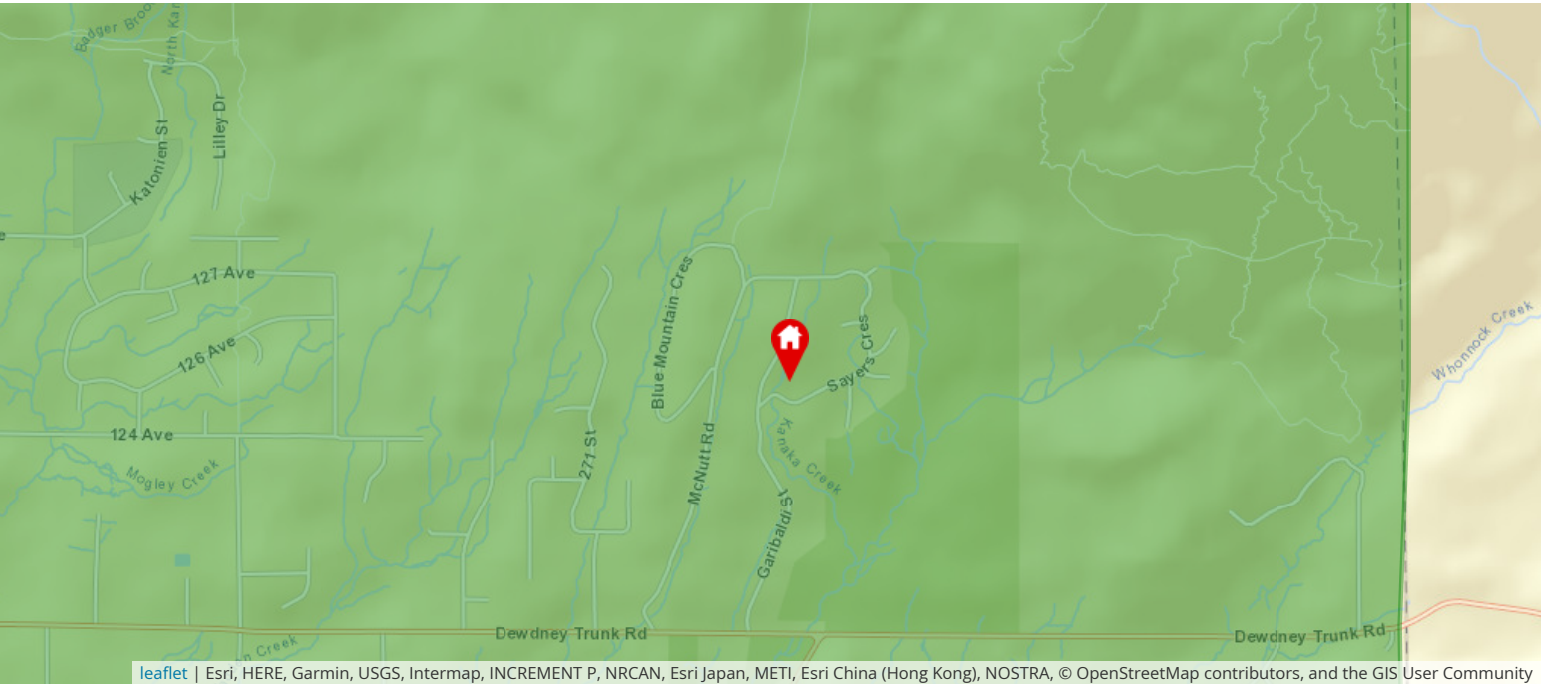


Legend: Subject Property Catchment School Other Schools

Elementary School Catchment: **Websters Corners** -

School's Name	Grades Covered	School District	City	Special Notes/Programs	Walking Time	Distance	Driving Time	Transit Time
A <a href="#">Webster's Corners</a>	K - 7	<a href="#">SD 42</a>	Maple Ridge		1 hour 4 mins	4.9 km	6 mins	15 mins
B <a href="#">Whonnock</a>	K - 7	<a href="#">SD 42</a>	Maple Ridge		54 mins	4.0 km	6 mins	54 mins
C <a href="#">Blue Mountain</a>	K - 7	<a href="#">SD 42</a>	Maple Ridge	StrongStart	1 hour 31 mins	6.8 km	8 mins	21 mins
D <a href="#">Meadowridge</a>	K - 12	Independent	Maple Ridge	IB Program (PYP & MYP); Private Independent School	1 hour 55 mins	8.7 km	11 mins	27 mins
E <a href="#">Alexander Robinson</a>	K - 7	<a href="#">SD 42</a>	Maple Ridge		1 hour 55 mins	8.8 km	10 mins	23 mins
F <a href="#">C'usqunela</a>	K - 7	<a href="#">SD 42</a>	Maple Ridge		2 hours 29 mins	11.3 km	15 mins	49 mins

Nearby Secondary Schools



Legend: Subject Property Catchment School Other Schools

Secondary School Catchment: **Garibaldi Secondary** -

	School's Name	Grades Covered	School District	City	Special Notes/Programs	Walking Time	Distance	Driving Time	Transit Time
A	<a href="#">Garibaldi</a>	8 - 12	<a href="#">SD 42</a>	Maple Ridge	IB Program (DP); Interdisciplinary Arts Academy	1 hour 27 mins	6.6 km	8 mins	16 mins
B	<a href="#">Meadowridge</a>	K - 12	Independent	Maple Ridge	IB Program (DP); Private Independent School	1 hour 55 mins	8.7 km	11 mins	27 mins
C	<a href="#">Samuel Robertson</a>	8 - 12	<a href="#">SD 42</a>	Maple Ridge	Trades Apprenticeship Programs; Hairstyling/Cosmetology Academy	2 hours 19 mins	10.4 km	13 mins	49 mins
D	<a href="#">Thomas Haney</a>	8 - 12	<a href="#">SD 42</a>	Maple Ridge	AP Program; Equestrian Academy	2 hours 24 mins	10.9 km	13 mins	34 mins
E	<a href="#">Maple Ridge</a>	8 - 12	<a href="#">SD 42</a>	Maple Ridge	French Immersion; AP Program; Digital Arts Academy	2 hours 59 mins	13.4 km	18 mins	44 mins
F	<a href="#">Westview</a>	8 - 12	<a href="#">SD 42</a>	Maple Ridge	AP Program; Soccer Academy	3 hours 19 mins	15.0 km	19 mins	46 mins

Walk Score

27561 SAYERS CR Maple Ridge, V2W 1N3



Car-Dependent

Almost all errands require a car



Minimal Transit

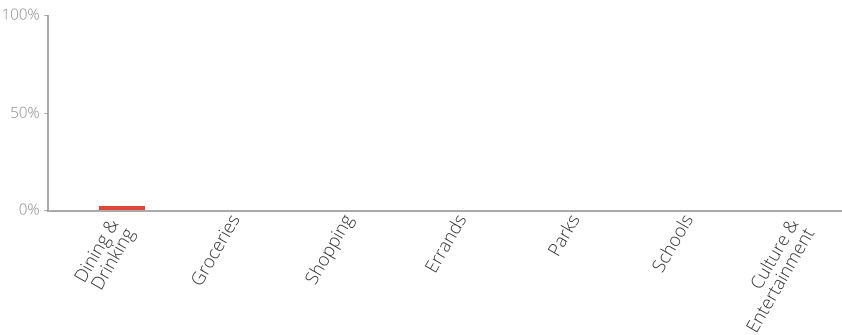
It is possible to get on a bus



Somewhat Bikeable

Minimal bike infrastructure

The Walk Score here is 0 out of 100 based on these categories. [View a map](#) of what's nearby.



Get scores for your address



Land Use

Subject Property Designation Summary

Datasource	Subject Property Designation
Zoning	Code: <a href="#">RS-3</a> Description: One Family Rural Residential
Official Community Plan	Land Use Description: <a href="#">Suburban Residential</a>
Neighbourhood Community Plan	Not Applicable
Local Area Plan	Not Applicable

Zoning



Subject Property Designations:

Code: [RS-3](#)  
Description: One Family Rural Residential

Layer Legend:

	Code	Description
	<a href="#">RS-3</a>	One Family Rural Residential
	<a href="#">RS-2</a>	One Family Suburban Residential



## Official Community Plan



### Subject Property Designations:

Land Use Description: [Suburban Residential](#)

### Layer Legend:

● Land Use Description: [Suburban Residential](#)

## Neighbourhood Community Plan



## Subject Property Designations:

Not Applicable

---

## Local Area Plan



## Subject Property Designations:

Not Applicable