



TWO DESIGN STUD

NEW LINE STONE

- Multiple Color
- Arbitrary bending
- Fine Texture



Product Size
600*1200 mm
1150*2700 mm



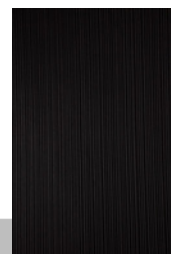
Code
DD1101



Package
3.5mm
4.5 mm



Product Weight
3.455 kg
16kg



Black



White



Gray



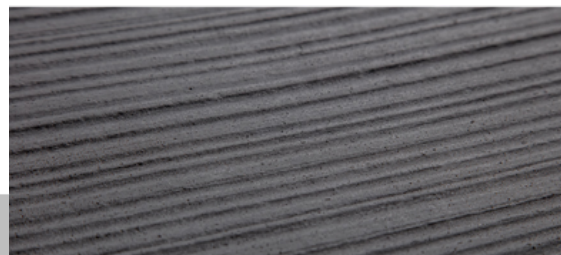
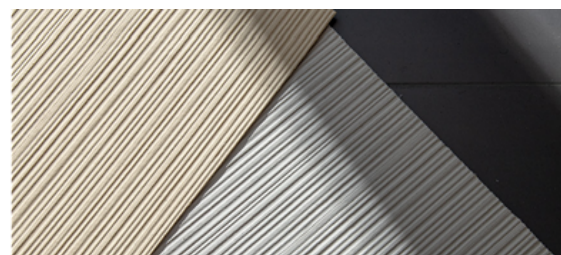
Off-white



Beige

• Multiple Color

The light is different, please refer to the actual object
Color cards are required for custom colors




• Product Features

Flexible and bendable, waterproof and fire-proof, safe and lightweight, durable and long-lasting






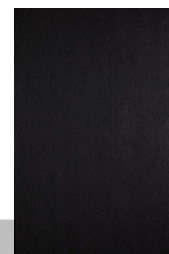
- Multiple Color
- Arbitrary bending
- Fine Texture

 **Product Size**
600*1200 mm

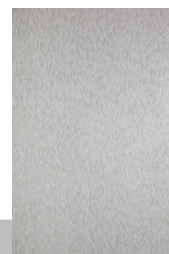
 **Code**
DD1102

 **Package**
3mm

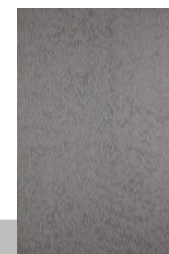
 **Product Weight**
3.455 kg



Black



White



Gray



Off-white



Beige

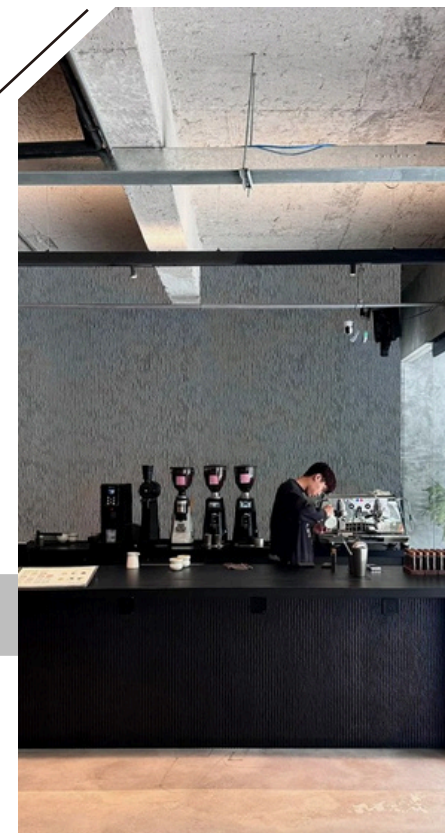
• Multiple Color

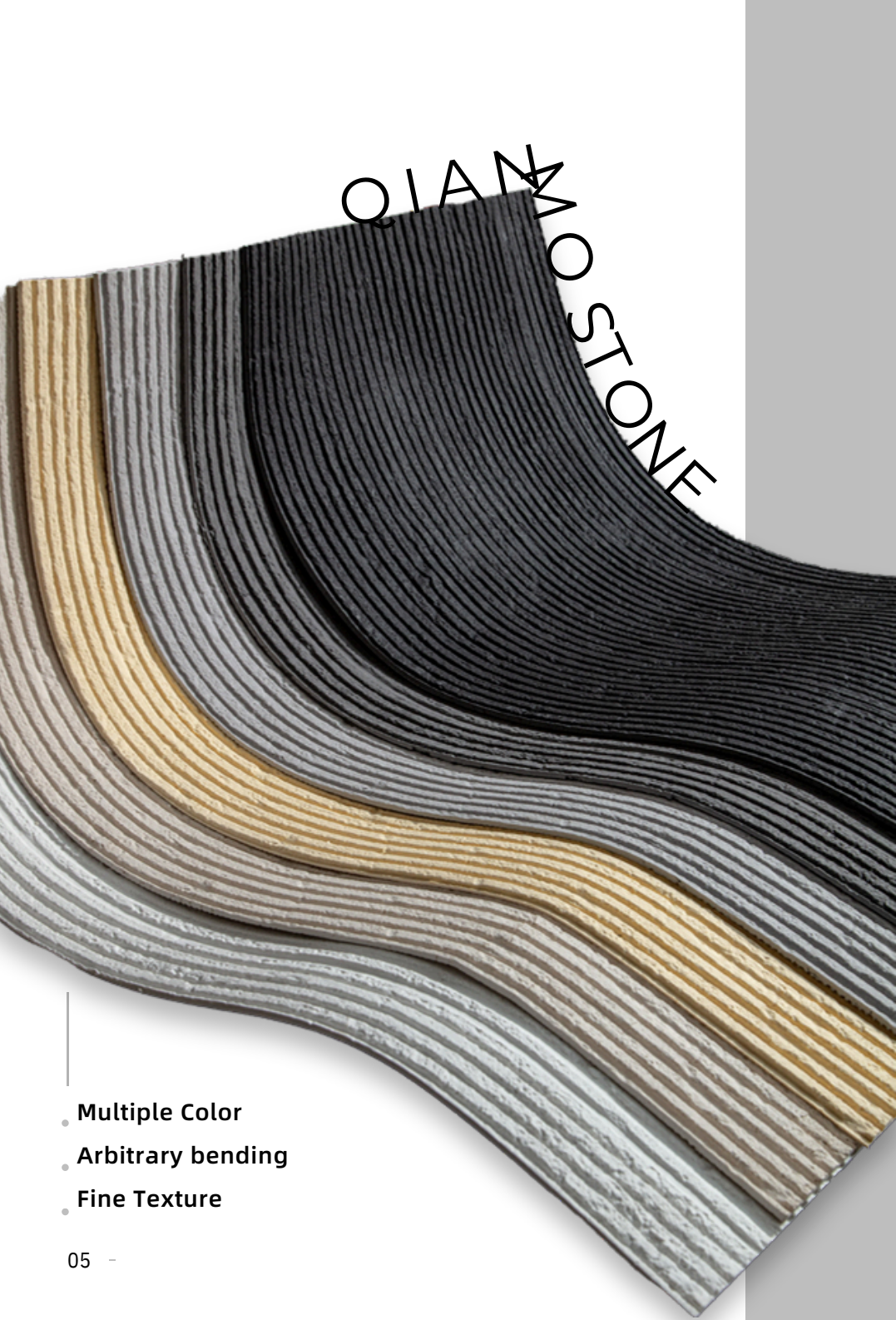
The light is different, please refer to the actual object
Color cards are required for custom colors



• Product feature

Flexible and bendable, waterproof and fire-proof, safe
and lightweight, durable and long-lasting





- Multiple Color
- Arbitrary bending
- Fine Texture



Product Size
600*1200 mm
600*3000 mm



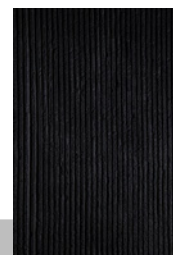
Code
DD1103



Package
9.2mm
6mm



Product Weight
16kg



Black



White



Gray



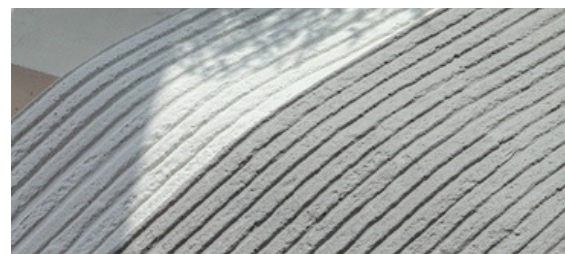
Off-white



Beige

• Multiple Color

The light is different, please refer to the actual object
Color cards are required for custom colors





• Product feature


Flexible and bendable, waterproof and fire-proof, safe and lightweight, durable and long-lasting




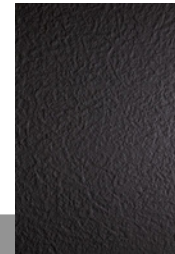
MAOMIAN GRANITE

 **Product Size**
600*1200 mm

 **Code**
DD1104

 **Package**
3.5mm

 **Product Weight**
3.25 kg



Black



White



Gray



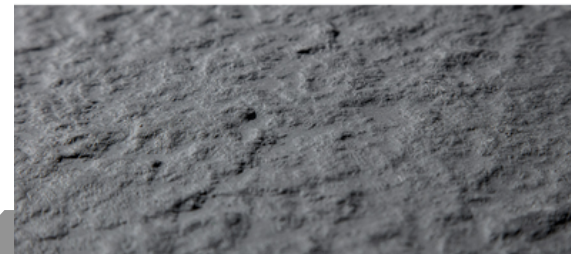
Beige



Brick Red

• Multiple Color

The light is different, please refer to the actual object
Color cards are required for custom colors

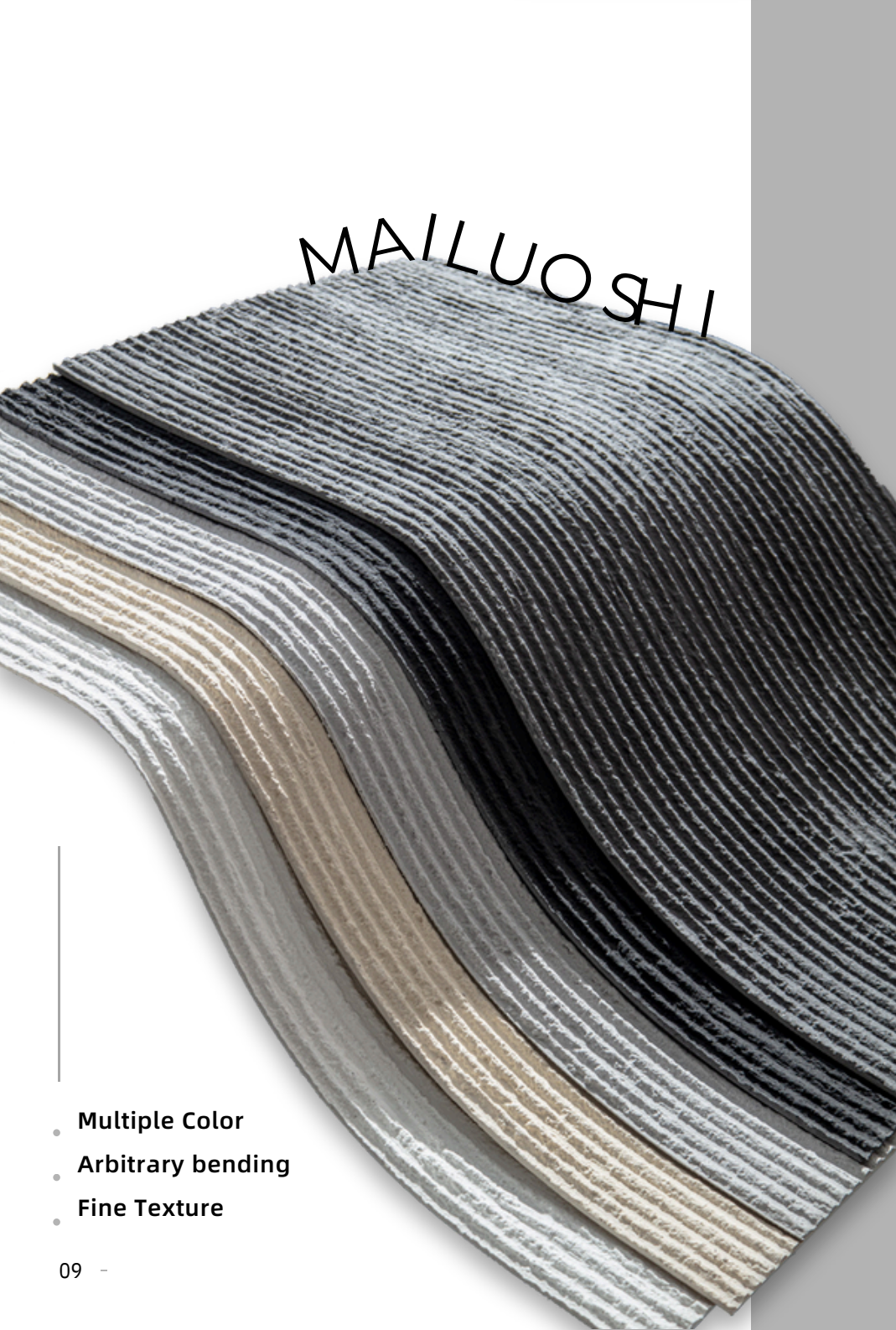


• Product feature

Flexible and bendable, waterproof and fire-proof, safe
and lightweight, durable and long-lasting




- Multiple Color
- Arbitrary bending
- Fine Texture





MAILUOSHI

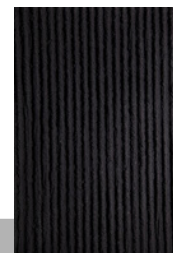
- Multiple Color
- Arbitrary bending
- Fine Texture

 **Product Size**
600*1200 mm
600*3200 mm

 **Code**
DD1105

 **Package**
5.2mm
7.8 mm

 **Product Weight**
4.75 kg
16kg



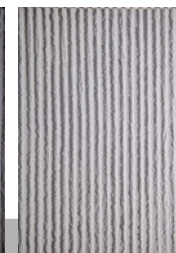
Black



White



Gray



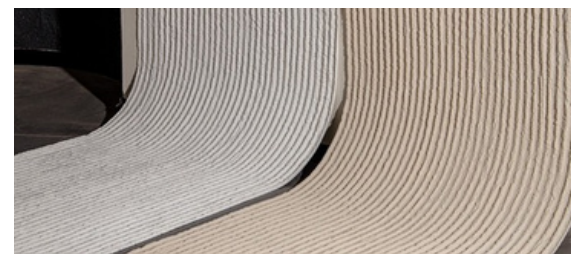
Off-white



Beige

• Multiple Color

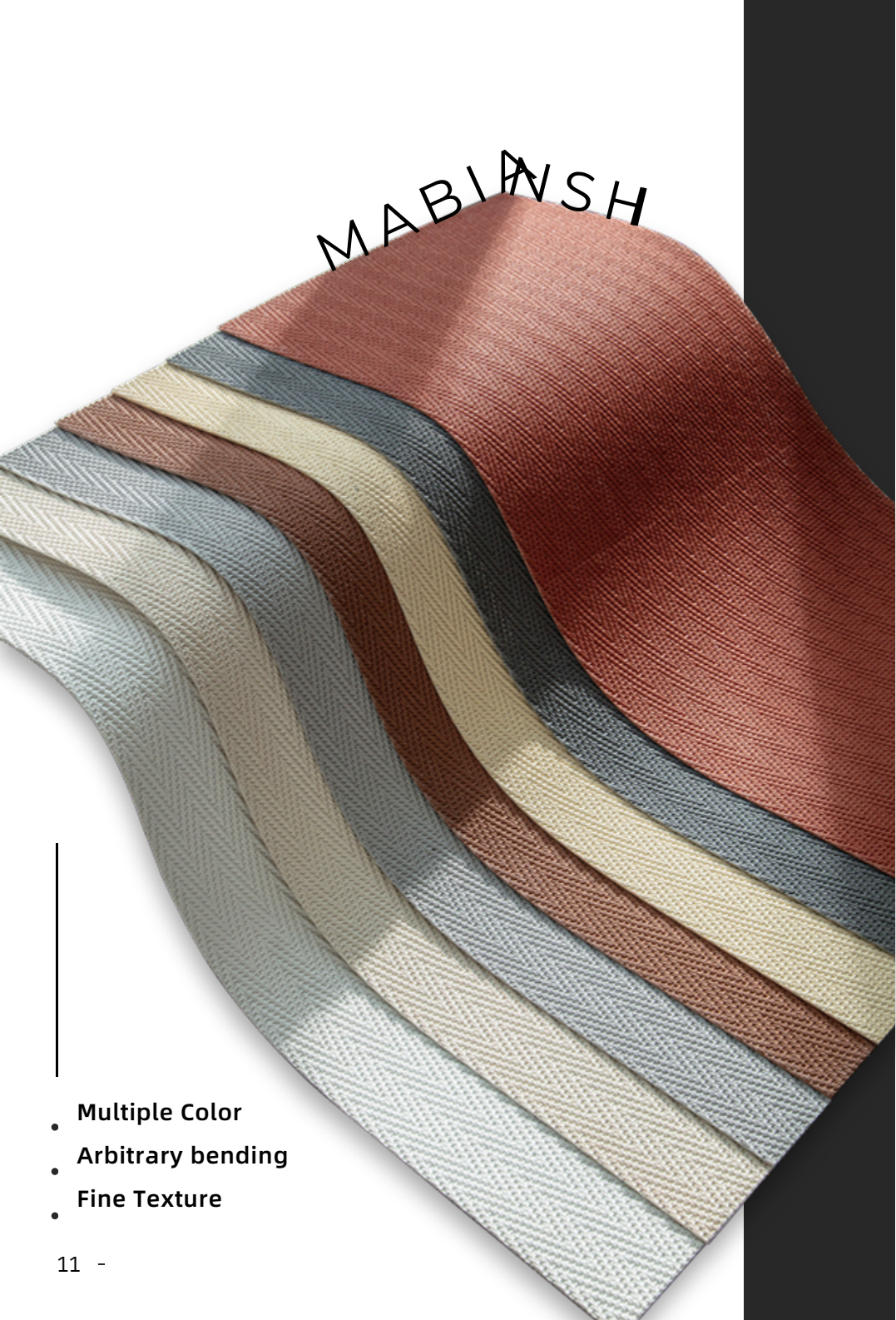
The light is different, please refer to the actual object
Color cards are required for custom colors




• Product feature


Flexible and bendable, waterproof and fire-proof, safe and lightweight, durable and long-lasting

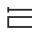





- Multiple Color
- Arbitrary bending
- Fine Texture

 **Product Size**
600*1200 mm

 **Code**
DD1106

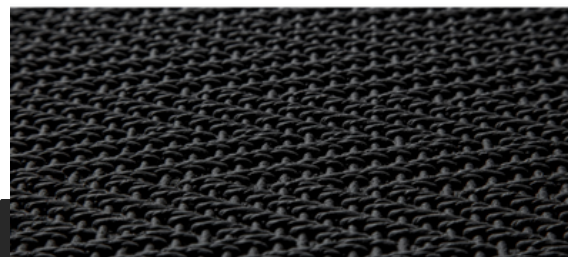
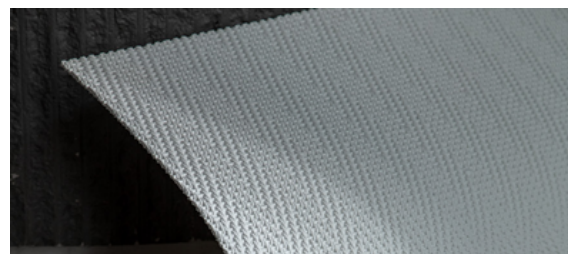
 **Package**
4.5 mm

 **Product Weight**
3.455 kg



• Multiple Color

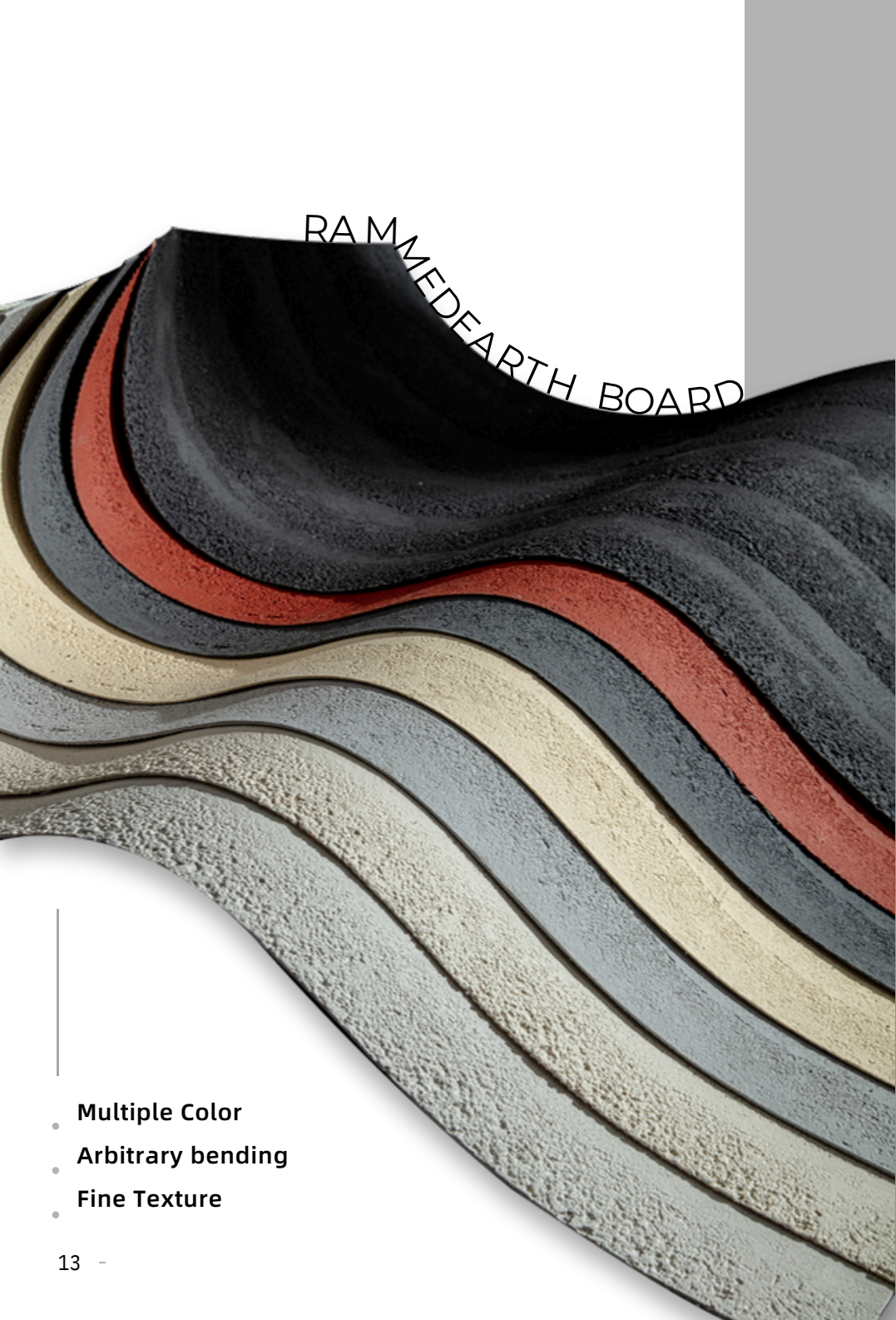
The light is different, please refer to the actual object
Color cards are required for custom colors



• Product feature


Flexible and bendable, waterproof and fire-proof, safe
and lightweight, durable and long-lasting







RAMMEDEARTH BOARD

- Multiple Color
- Arbitrary bending
- Fine Texture

 **Product Size**
600*1200 mm
950*2700 mm

 **Code**
DD1107

 **Package**
2.8mm
2.5mm

 **Product Weight**
2.6 kg
10.5kg



Black

White

Gray

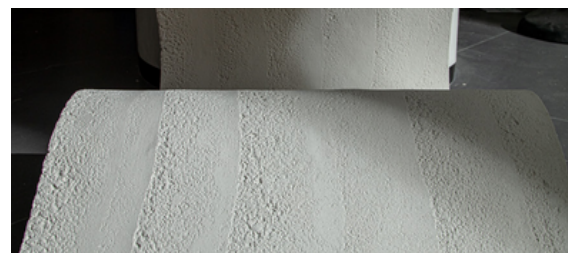
Off-white

Beige

Brick Red

• Multiple Color

The light is different, please refer to the actual object
Color cards are required for custom colors



• Product feature

Flexible and bendable, waterproof and fire-proof, safe and lightweight, durable and long-lasting



TRAVERTINE



Product Size
600*1200 mm



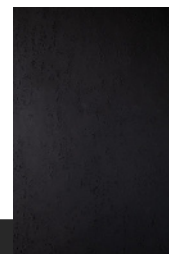
Code
DD1108



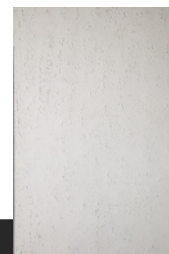
Package
2mm



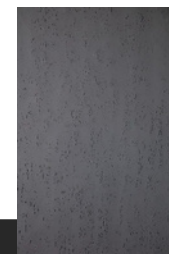
Product Weight
2.85 kg



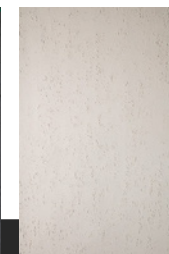
Black



White



Gray



Off-white



Beige

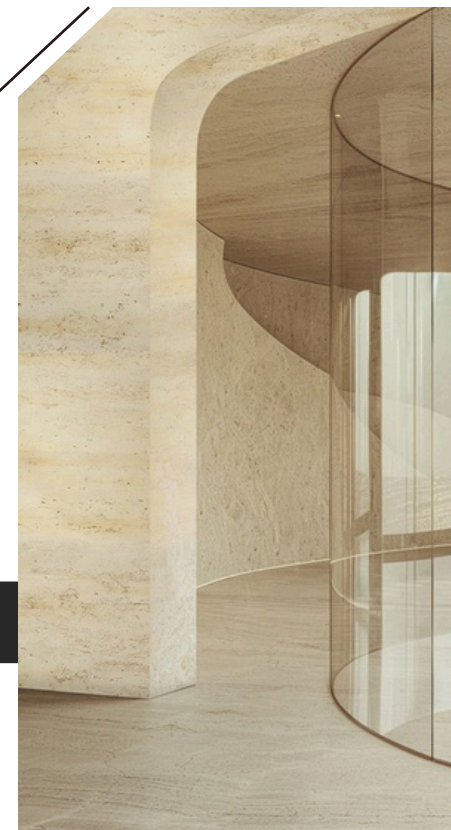
• Multiple Color

The light is different, please refer to the actual object
Color cards are required for custom colors



• Product feature

Flexible and bendable, waterproof and fire-proof, safe and lightweight, durable and long-lasting




- Multiple Color
- Arbitrary bending
- Fine Texture


STAR MOON STONE




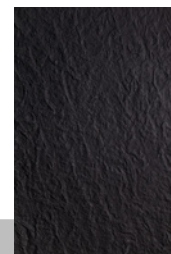
- Multiple Color
- Arbitrary bending
- Fine Texture

 **Product Size**
1120*2950 mm
1150*3000 mm

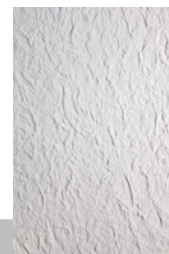
 **Code**
DD1109

 **Package**
4.5mm
7.5 mm

 **Product Weight**
14 kg
24kg



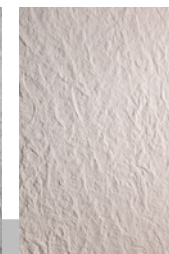
Black



White



Gray



Off-white



Beige

• Multiple Color

The light is different, please refer to the actual object
Color cards are required for custom colors




• Product feature

Flexible and bendable, waterproof and fire-proof, safe
and lightweight, durable and long-lasting




SLATE

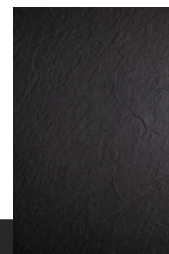
- Multiple Color
- Arbitrary bending
- Fine Texture

 **Product Size**
600*1200 mm

 **Code**
DD1110

 **Package**
2.5mm

 **Product Weight**
3.07 kg



Black



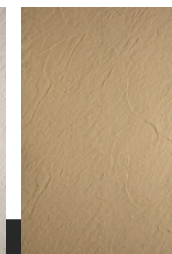
White



Gray



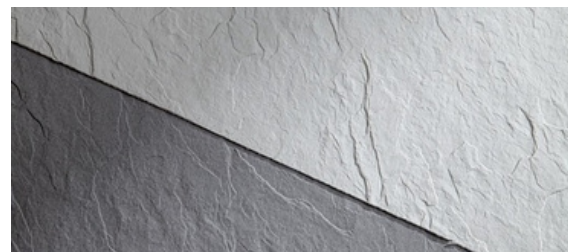
Off-white



Beige

• Multiple Color

The light is different, please refer to the actual object
Color cards are required for custom colors



• Product feature

Flexible and bendable, waterproof and fire-proof, safe
and lightweight, durable and long-lasting



COARSE CLOTH PATTERN

- Multiple Color
- Arbitrary bending
- Fine Texture



Product Size
600*1200 mm



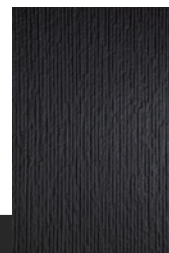
Code
DD1111



Package
6.5 mm



Product Weight
4.455 kg



Black



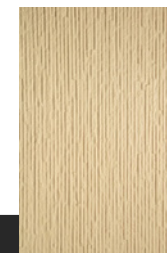
White



Gray



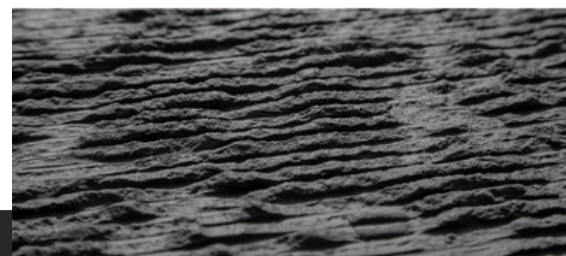
Off-white



Beige

• Multiple Color

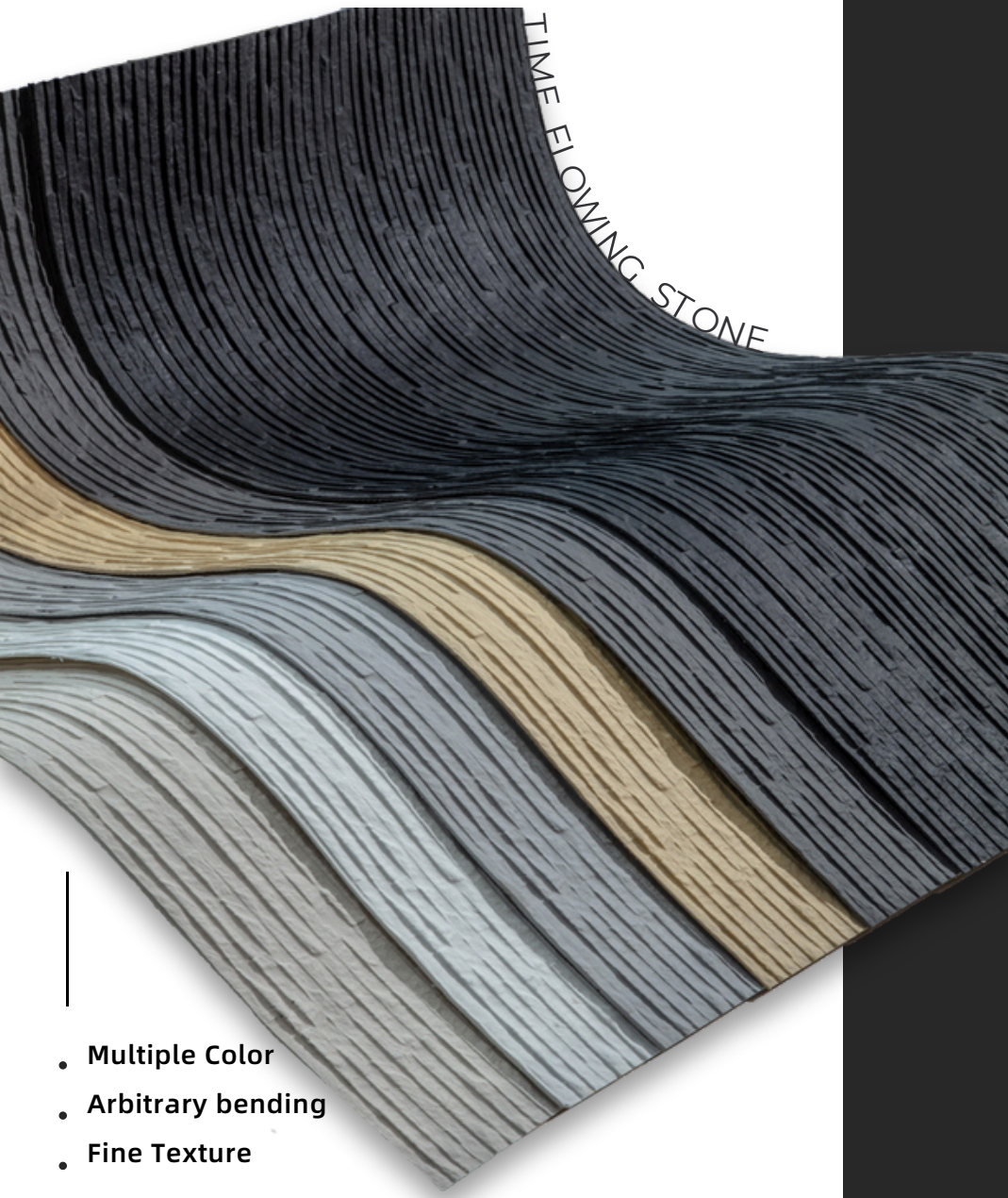
The light is different, please refer to the actual object
Color cards are required for custom colors




• Product feature


Flexible and bendable, waterproof and fire-proof, safe and lightweight, durable and long-lasting

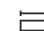


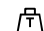


- Multiple Color
- Arbitrary bending
- Fine Texture

 **Product Size**
600*1200 mm

 **Code**
DD1112

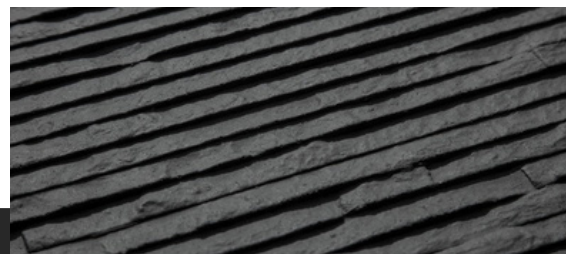
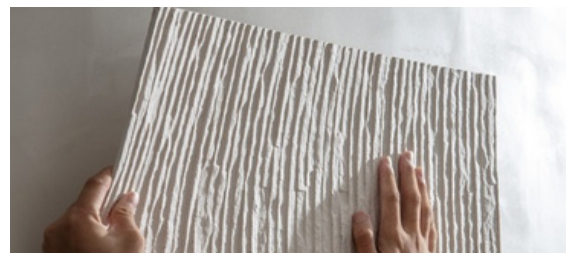
 **Package**
5mm

 **Product Weight**
3.455 kg



• Multiple Color

The light is different, please refer to the actual object
Color cards are required for custom colors



• Product feature

Flexible and bendable, waterproof and fire-proof, safe
and lightweight, durable and long-lasting



LINE STONE

WIDE

- Multiple Color
- Arbitrary bending
- Fine Texture



Product Size
600*1200 mm



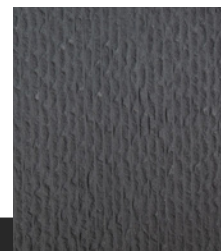
Code
DD1113



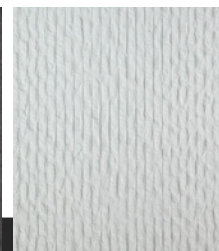
Package
4.7 mm



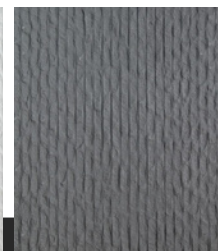
Product Weight
3.7 kg



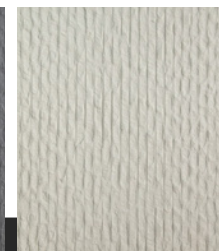
Black



White



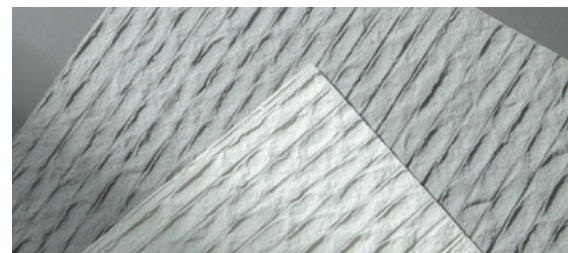
Gray



Off-white

• Multiple Color

The light is different, please refer to the actual object
Color cards are required for custom colors




• Product feature


Flexible and bendable, waterproof and fire-proof, safe and lightweight, durable and long-lasting







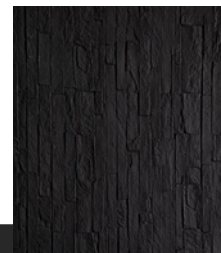
- Multiple Color
- Arbitrary bending
- Fine Texture

 **Product Size**
600*1200 mm

 **Code**
DD1114

 **Package**
4.1 mm

 **Product Weight**
3.955 kg



Black



White



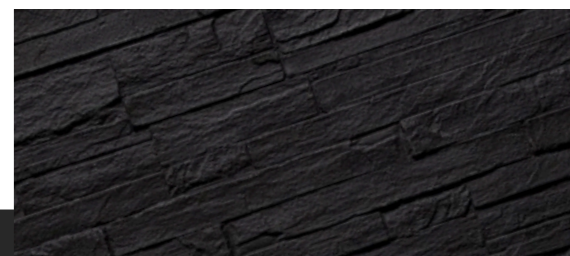
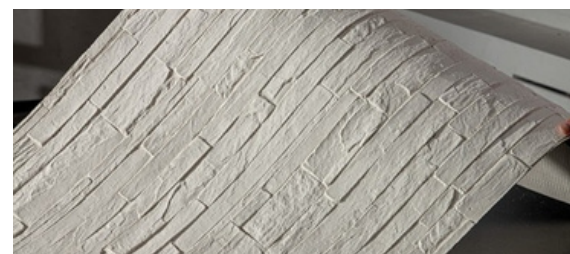
Gray



Off-white

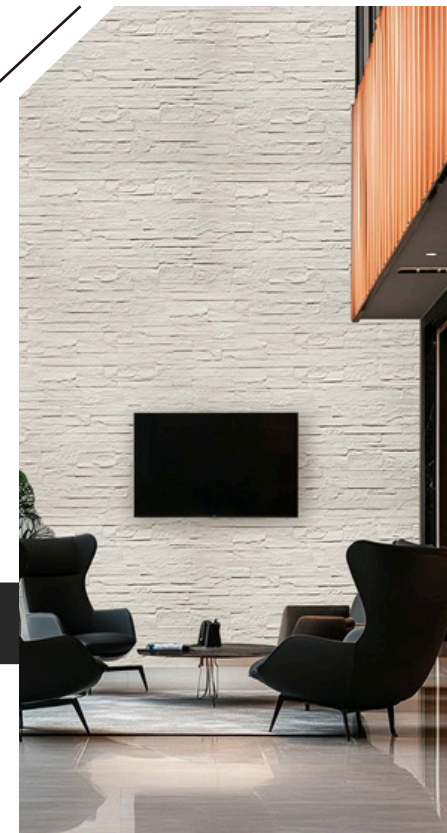
• Multiple Color

The light is different, please refer to the actual object
Color cards are required for custom colors



• Product feature


Flexible and bendable, waterproof and fire-proof, safe and lightweight, durable and long-lasting






HIGH MOUNTAINS AND FLOWING WATER

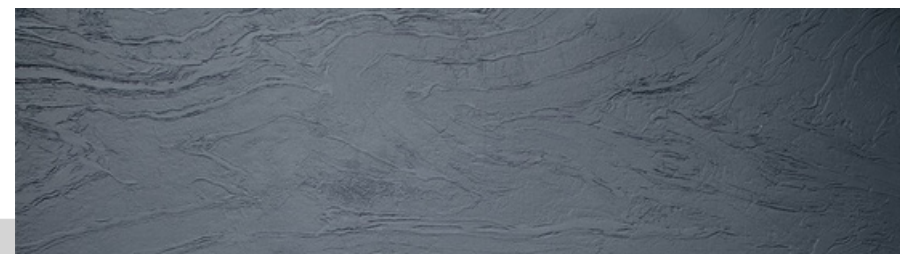
- Multiple Color
- Arbitrary bending
- Fine Texture

 **Product Size**
1200*2800 mm

 **Code**
DD1115

 **Package**
3.5mm

 **Product Weight**
14.5 kg

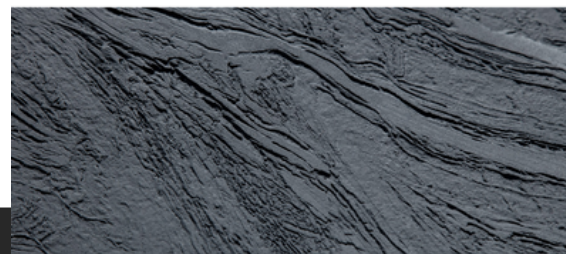
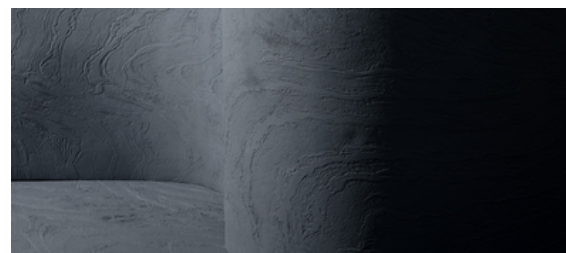


Black

Color cards are required for custom colors

• Multiple Color

The light is different, please refer to the actual object

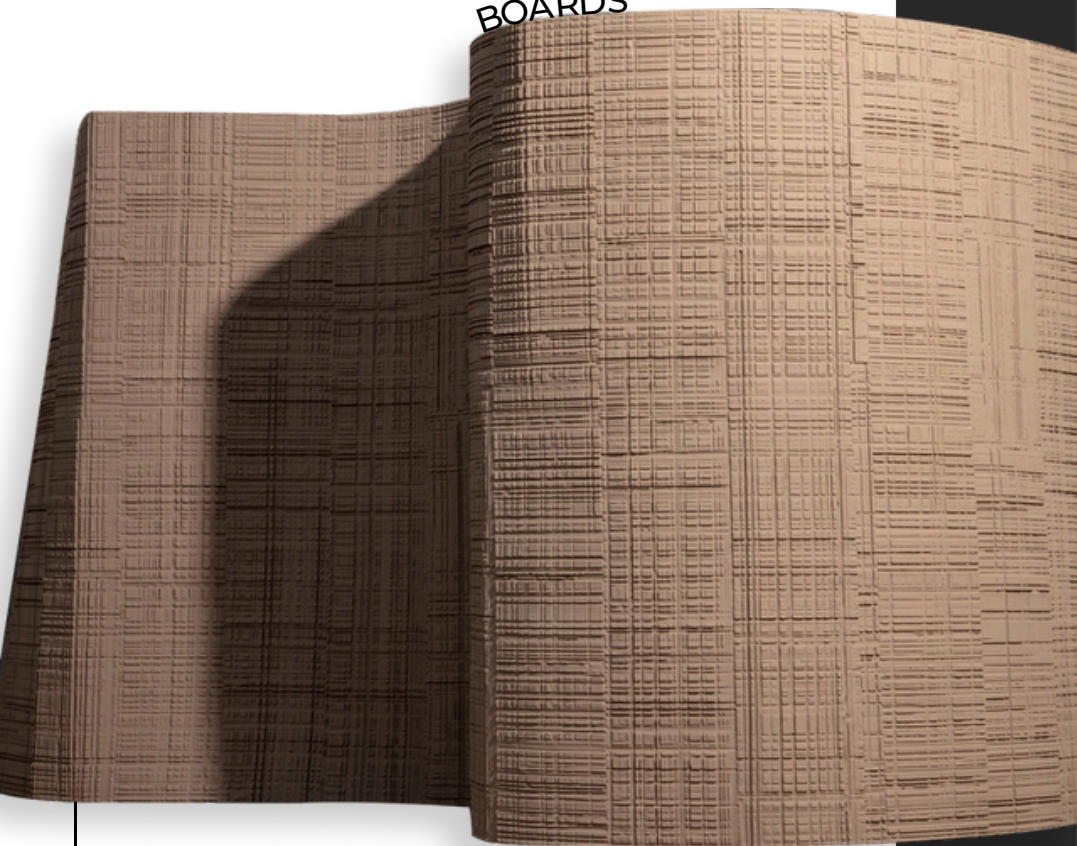


• Product feature


Flexible and bendable, waterproof and fire-proof, safe and lightweight, durable and long-lasting




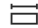
SAWN WOODEN BOARDS



- Multiple Color
- Arbitrary bending
- Fine Texture

 **Product Size**
1150*3050 mm

 **Code**
DD1116

 **Package**
7.5mm

 **Product Weight**
21 kg



Black



White



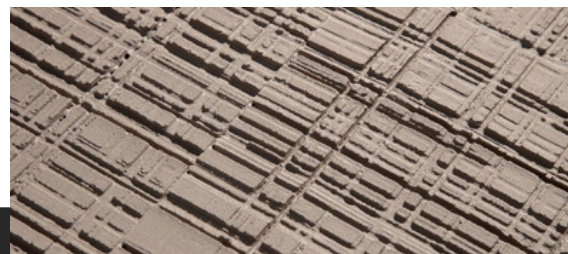
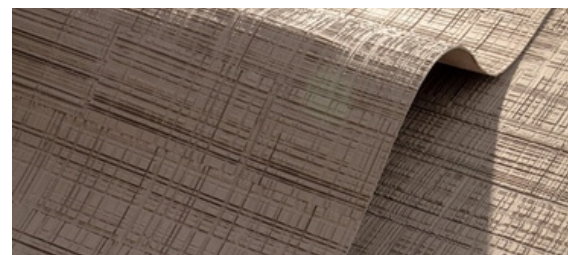
Gray



Beige

• Multiple Color

The light is different, please refer to the actual object
Color cards are required for custom colors



• Product feature

Flexible and bendable, waterproof and fire-proof, safe
and lightweight, durable and long-lasting





LONGKAW STONE

- Multiple Color
- Arbitrary bending
- Fine Texture



Product Size
1190*2750 mm



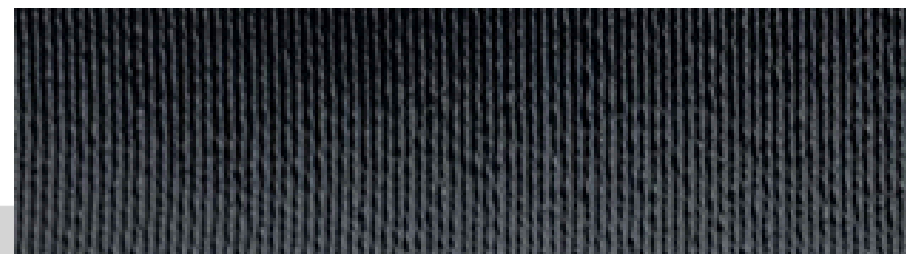
Code
DD1116



Package
8 mm



Product Weight
24 kg

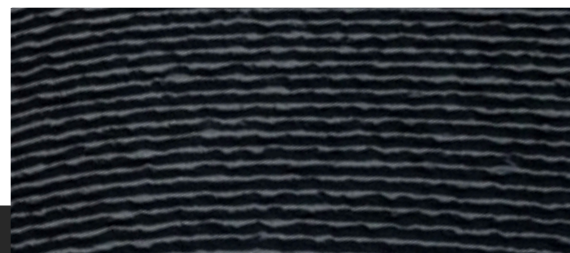
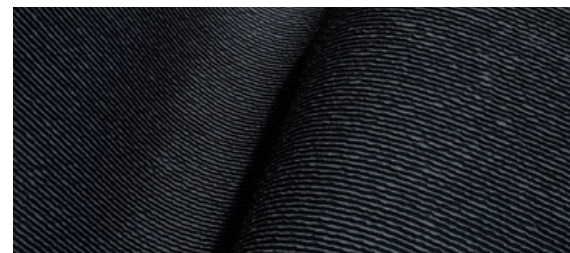


Black

Color cards are required for custom colors

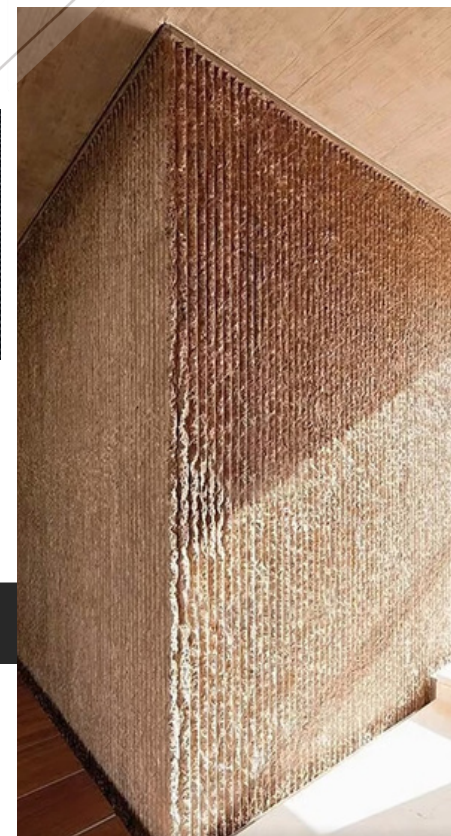
• Multiple Color

The light is different, please refer to the actual object



• Product feature


Flexible and bendable, waterproof and fire-proof, safe and lightweight, durable and long-lasting






CARBONIZED WOODEN BOARD

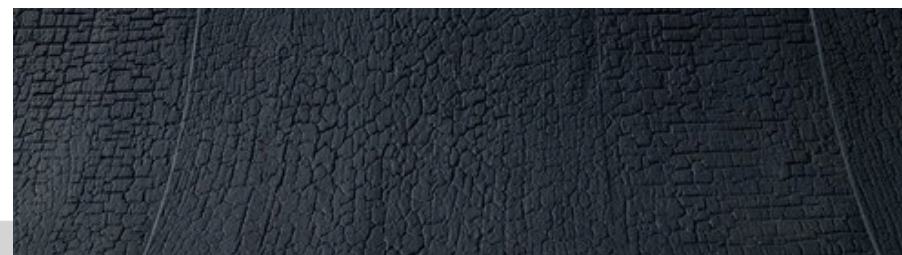
- Multiple Color
- Arbitrary bending
- Fine Texture

 **Product Size**
1180*2800 mm

 **Code**
DD11171

 **Package**
3mm

 **Product Weight**
12 kg



Black

Color cards are required for custom colors

• Multiple Color

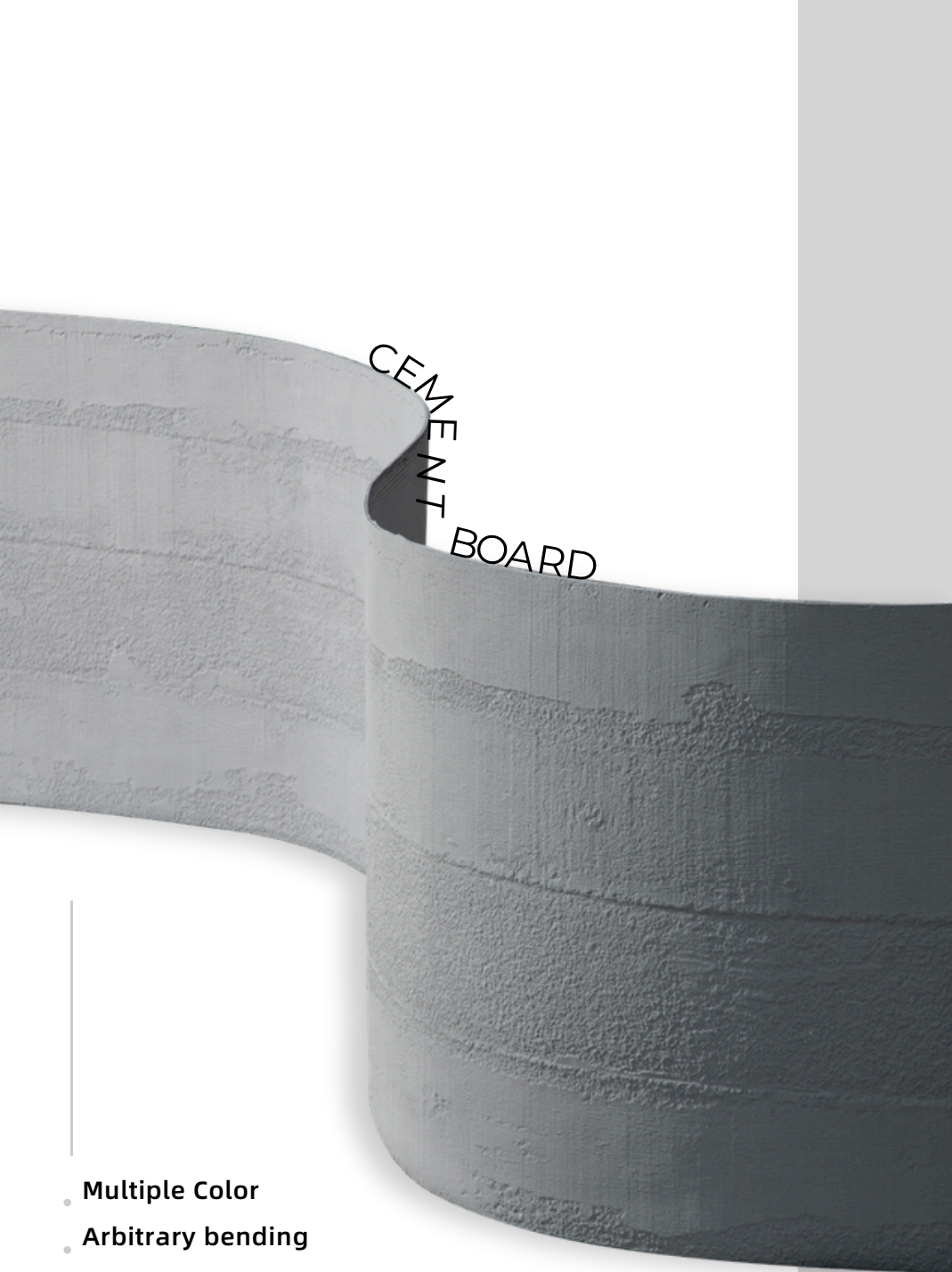
The light is different, please refer to the actual object




• Product feature

Flexible and bendable, waterproof and fire-proof, safe and lightweight, durable and long-lasting







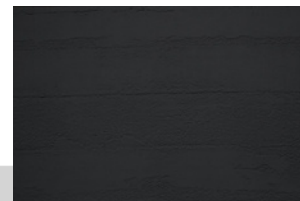
- Multiple Color
- Arbitrary bending
- Fine Texture

 **Product Size**
600*2880 mm

 **Code**
DD1117

 **Package**
2.6mm

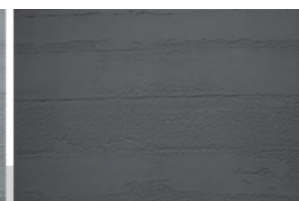
 **Product Weight**
5.5 kg



Black



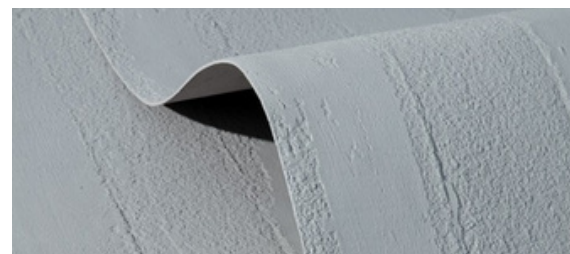
White



Gray

• Multiple Color

The light is different, please refer to the actual object
Color cards are required for custom colors



• Product feature

Flexible and bendable, waterproof and fire-proof, safe
and lightweight, durable and long-lasting





+971 55 270 5715

info@twodesignstudio.org

www.twodesignstudio.org

DUBAI



tdsstore.ae



[two-design-studio](https://www.linkedin.com/company/two-design-studio)



[two.designstudio2](https://www.instagram.com/two.designstudio2)