

styling spaces
with stone
veneers





who we are

the artistry of thin stone veneers

pan creations india (pci) is a revolutionary company that pioneered the manufacture and export of ultra-thin stone veneers back in 2004. since then, the company has grown robustly under the collective, inspiring stewardship of sunil and deepthi dhariwal. mr. dhariwal comes with years of expertise and experience in the geology of stone, given that his previous company manufactured and exported real stone since 1991. today, pci continues its legacy of being stone veneer experts, supplying best-quality cut-to-size stone veneers for high-end commercial projects worldwide. when we think of stone, we instinctively think "tough" and "rigid." that this beautiful material of nature could be bent was something unimaginable. pan creations was the first company to explore "stone" in a unique manner in 2004 - as ultra-thin and flexible veneer sheets that can be affixed anywhere.

this exciting space is the foundation on which we stand proudly today. pci was the first indian company to manufacture and export ultra-thin slate stone veneers worldwide. over the years, our unrivalled product quality, flawless execution and honest customer service have brought delight after delight to our customers and their projects. at pci, we go the extra mile to help a customer's business flourish, beyond the products we sell. from art centres, museums, and malls to casinos, hotels, and modern office complexes, our sturdy, beautiful stone veneers adorn so many sites. it humbles us further when we see the results of that one idea, whose endless possibilities have taken our product across the globe! our sense of aesthetic is constantly inspired by not only the latest market trends but also what our customers want. pci is an indian-origin company that exports to the whole world, staying true to make in india.





Embrace the natural way to make spaces beautiful

our pioneering product - the ultra-thin slate stone veneer - is a revolutionary cladding product that suits all architectural and interior decor requirements. its natural properties not only give it a distinct look and vibe, but also ensure durability. being super lightweight and flexible, these veneers are easy to install on walls, floors, furniture, tabletops, decorative accents, and more. our ultra-thin veneers of natural slate, sandstone, limestone, quartzite and marble are available in 40+ colours.

our revolutionary ultra-thin stone veneers are:

**just 1-2 mm thick stone layers made by extracting thin sheets
from slabs of natural stones,**

**hence eco-friendly lightweight flexible and can be bent in concave, convex, arched
or radial forms**

weather-resistant:

can withstand extreme heat and cold easy to fix on internal and external surfaces

Delivering flawless performance through operational excellence



stone yard



warehouse



production sheds



packing shed

our state-of-the-art four-acre plant has a dedicated area for each stage of the process, reflecting the utmost importance we assign to each step. the plant is equipped with superior machinery, skilled manpower, and clearly defined systems and processes, all of which enhance our capability of processing custom orders with different designs, types, colours and finish of stones. we pride ourselves on our unmatched quality and craftsmanship, but we also know there are so many more miles to go before we rest. we measure our achievements not just in business, but also in our efforts towards sustainability and equality. as a conscientious company, we keep striving to do our bit to help people and the planet.

since the start, our employees and stakeholders continually aspire to reach greater heights of excellence in product innovation and customer service. over the years, we have built long-standing relationships with leading contractors and architects in north and south america, europe, china, japan, australia as well as germany and spain.



We are here for you

our products

a revolutionary vision





our products

our ultra-thin stone veneers, with their beautiful properties and ease of use, have created infinite possibilities in elevating the design and aesthetics of any surface and space.

industries we serve

- door manufacturers flooring
manufacturers kitchen cabinet
manufacturers wall panel manufacturers
building exterior cladding interior
design furniture making experts

our product categories

nr grade (fibre glass backing) uv
translucent
(fibre glass backing)
pva grade (fabric backing)
real sandstone veneer (fibre glass
backing)
pva cellulose backing

NR grade



stone veneer swatches

slate / mica colors**nr grade****indian autumn****sizes available (mm)**

1220 x 610	2100 x 1050	2400 x 1200
✓	✓	✓

**indian autumn
rustic****sizes available (mm)**

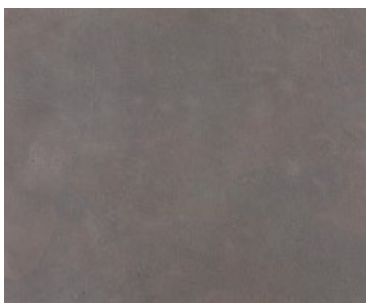
1220 x 610	2100 x 1050	2400 x 1200
✓	✓	✓

**sanjayani white****sizes available (mm)**

1220 x 610	2100 x 1050	2400 x 1200
✓	✓	✓

**multi color****sizes available (mm)**

1220 x 610	2100 x 1050	2400 x 1200
✓	✓	✓

**multi color grey****sizes available (mm)**

1220 x 610	2100 x 1050	2400 x 1200
✓	na	na

slate / mica colors

nr grade



multi pink

sizes available (mm)		
1220 x 610	2100 x 1050	2400 x 1200
✓	✓	✓



california gold

sizes available (mm)		
1220 x 610	2100 x 1050	2400 x 1200
✓	✓	✓



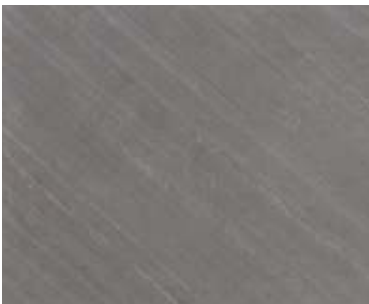
terra red

sizes available (mm)		
1220 x 610	2100 x 1050	2400 x 1200
✓	✓	✓



tan

sizes available (mm)		
1220 x 610	2100 x 1050	2400 x 1200
✓	✓	✓



d. black

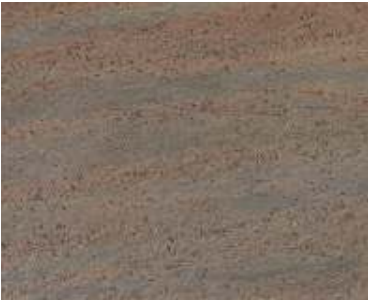
sizes available (mm)		
1220 x 610	2100 x 1050	2400 x 1200
✓	✓	✓

slate / mica colors	nr grade
---------------------	----------



black

sizes available (mm)		
1220 x 610	2100 x 1050	2400 x 1200
✓	✓	✓



copper

sizes available (mm)		
1220 x 610	2100 x 1050	2400 x 1200
✓	✓	✓



copper-new

sizes available (mm)		
1220 x 610	2100 x 1050	2400 x 1200
✓	✓	✓



jeera green

sizes available (mm)		
1220 x 610	2100 x 1050	2400 x 1200
✓	✓	✓



ocean green

sizes available (mm)		
1220 x 610	2100 x 1050	2400 x 1200
✓	✓	✓

slate / mica colors**nr grade****d. green****sizes available (mm)**

1220 x 610	2100 x 1050	2400 x 1200
✓	✓	✓

**golden****sizes available (mm)**

1220 x 610	2100 x 1050	2400 x 1200
✓	✓	✓

**silver shine****sizes available (mm)**

1220 x 610	2100 x 1050	2400 x 1200
✓	✓	✓

**silver shine gold****sizes available (mm)**

1220 x 610	2100 x 1050	2400 x 1200
✓	✓	✓

**burning forest
copper****sizes available (mm)**

1220 x 610	2100 x 1050	2400 x 1200
✓	✓	✓

slate / mica colors	nr grade
---------------------	----------



galaxy black

sizes available (mm)		
1220 x 610	2100 x 1050	2400 x 1200
✓	✓	✓



silver grey

sizes available (mm)		
1220 x 610	2100 x 1050	2400 x 1200
✓	✓	✓



star galaxy

sizes available (mm)		
1220 x 610	2100 x 1050	2400 x 1200
✓	✓	✓



ice pearl

sizes available (mm)		
1220 x 610	2100 x 1050	2400 x 1200
✓	✓	✓

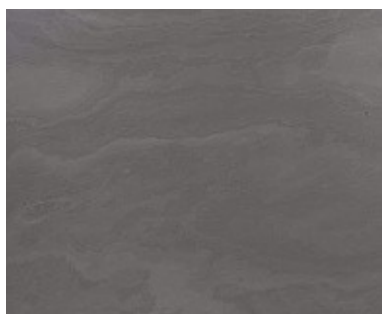
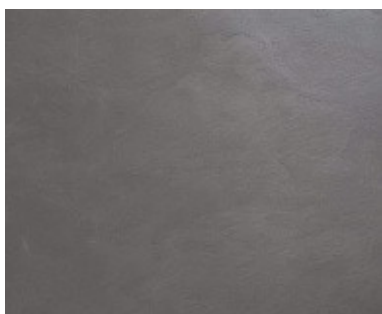


green pearl

sizes available (mm)		
1220 x 610	2100 x 1050	2400 x 1200
✓	✓	✓

slate / mica colors**nr grade****jade green****sizes available (mm)**

1220 x 610	2100 x 1050	2400 x 1200
✓	na	na

**cal grey****sizes available (mm)**

1220 x 610	2100 x 1050	2400 x 1200
✓	✓	✓

**mal grey****sizes available (mm)**

1220 x 610	2100 x 1050	2400 x 1200
✓	✓	✓

**lime pink****sizes available (mm)**

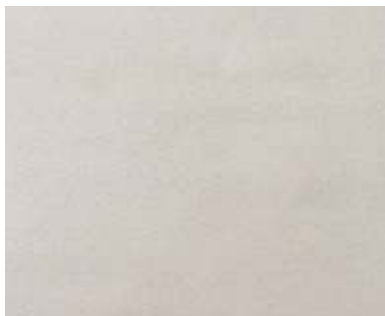
1220 x 610	2100 x 1050	2400 x 1200
✓	✓	✓

**pink pearl****sizes available (mm)**

1220 x 610	2100 x 1050	2400 x 1200
✓	✓	✓

sandstone & marble**nr grade****teakwood sandstone****sizes available (mm)**

1220 x 610	2100 x 1050	2400 x 1200
✓	✓	✓

**white sandstone****sizes available (mm)**

1220 x 610	2100 x 1050	2400 x 1200
✓	✓	✓

**tint mint sandstone****sizes available (mm)**

1220 x 610	2100 x 1050	2400 x 1200
✓	✓	✓

**red sandstone****sizes available (mm)**

1220 x 610	2100 x 1050	2400 x 1200
✓	✓	✓

**rainforest brown****sizes available (mm)**

1220 x 610	2100 x 1050	2400 x 1200
✓	✓	✓

sandstone & marble**nr grade****rainforest green****sizes available (mm)**

1220 x 610	2100 x 1050	2400 x 1200
✓	✓	✓

**rainbow sandstone****sizes available (mm)**

1220 x 610	2100 x 1050	2400 x 1200
✓	✓	✓

**monsoon black****sizes available (mm)**

1220 x 610	2100 x 1050	2400 x 1200
✓	✓	✓

**ice black****sizes available (mm)**

1220 x 610	2100 x 1050	2400 x 1200
✓	✓	✓

**spider white****sizes available (mm)**

1220 x 610	2100 x 1050	2400 x 1200
✓	✓	✓

sandstone & marble

nr grade



spider black

sizes available (mm)

1220 x 610	2100 x 1050	2400 x 1200
✓	✓	✓



silvia

sizes available (mm)

1220 x 610	2100 x 1050	2400 x 1200
✓	✓	✓



zebra black

sizes available (mm)

1220 x 610	2100 x 1050	2400 x 1200
✓	na	na

UV translucent

stone veneer
swatches



slate / mica colors**uv translucent****without light****with light****indian autumn****sizes available (mm)**

1220 x 610	2100 x 1050	2400 x 1200
✓	✓	✓

**without light****with light****indian autumn
rustic****sizes available (mm)**

1220 x 610	2100 x 1050	2400 x 1200
✓	✓	✓

**without light****with light****sanjayani white****sizes available (mm)**

1220 x 610	2100 x 1050	2400 x 1200
✓	✓	✓

**without light****with light****multi color****sizes available (mm)**

1220 x 610	2100 x 1050	2400 x 1200
✓	✓	✓

**without light****with light****multi color grey****sizes available (mm)**

1220 x 610	2100 x 1050	2400 x 1200
✓	na	na



without light



with light

multi pink**sizes available (mm)**

1220 x 610	2100 x 1050	2400 x 1200
✓	✓	✓



without light



with light

california gold**sizes available (mm)**

1220 x 610	2100 x 1050	2400 x 1200
✓	✓	✓



without light



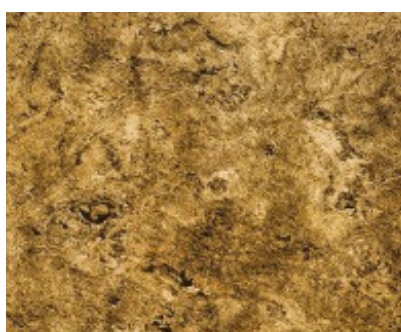
with light

terra red**sizes available (mm)**

1220 x 610	2100 x 1050	2400 x 1200
✓	✓	✓



without light



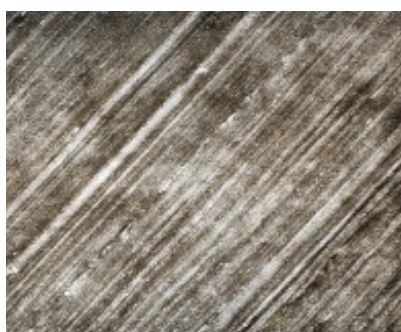
with light

tan**sizes available (mm)**

1220 x 610	2100 x 1050	2400 x 1200
✓	✓	✓



without light



with light

d. black**sizes available (mm)**

1220 x 610	2100 x 1050	2400 x 1200
✓	✓	✓



without light



with light

black

sizes available (mm)

1220 x 610	2100 x 1050	2400 x 1200
✓	✓	✓



without light



with light

copper

sizes available (mm)

1220 x 610	2100 x 1050	2400 x 1200
✓	✓	✓



without light



with light

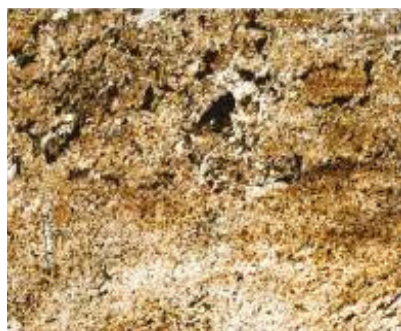
copper-new

sizes available (mm)

1220 x 610	2100 x 1050	2400 x 1200
✓	✓	✓



without light



with light

jeera green

sizes available (mm)

1220 x 610	2100 x 1050	2400 x 1200
✓	✓	✓



without light



with light

ocean green

sizes available (mm)

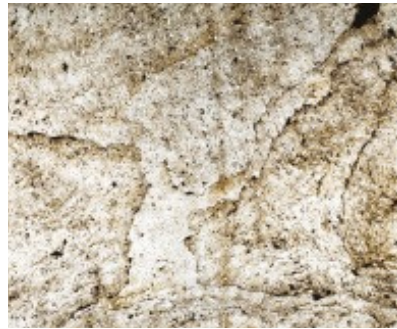
1220 x 610	2100 x 1050	2400 x 1200
✓	✓	✓

slate / mica colors

uv translucent



without light



with light

d. green

sizes available (mm)

1220 x 610	2100 x 1050	2400 x 1200
✓	✓	✓



without light

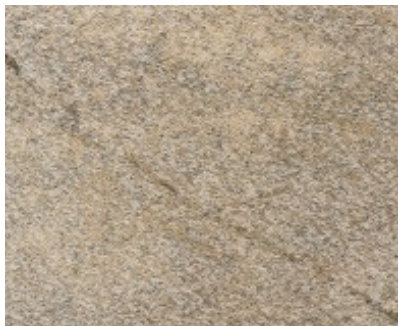


with light

golden

sizes available (mm)

1220 x 610	2100 x 1050	2400 x 1200
✓	✓	✓



without light



with light

silver shine

sizes available (mm)

1220 x 610	2100 x 1050	2400 x 1200
✓	✓	✓



without light



with light

silver shine gold

sizes available (mm)

1220 x 610	2100 x 1050	2400 x 1200
✓	✓	✓



without light



with light

burning forest copper

sizes available (mm)

1220 x 610	2100 x 1050	2400 x 1200
✓	✓	✓

slate / mica colors**uv translucent****without light****with light****galaxy black****sizes available (mm)**

1220 x 610	2100 x 1050	2400 x 1200
✓	✓	✓

**without light****with light****silver grey****sizes available (mm)**

1220 x 610	2100 x 1050	2400 x 1200
✓	✓	✓

**without light****with light****ice pearl****sizes available (mm)**

1220 x 610	2100 x 1050	2400 x 1200
✓	✓	✓

**without light****with light****green pearl****sizes available (mm)**

1220 x 610	2100 x 1050	2400 x 1200
✓	✓	✓

**without light****with light****jade green****sizes available (mm)**

1220 x 610	2100 x 1050	2400 x 1200
✓	na	na

slate / mica colors

uv translucent



without light



with light

cal grey

sizes available (mm)

1220 x 610	2100 x 1050	2400 x 1200
✓	✓	✓



without light



with light

mal grey

sizes available (mm)

1220 x 610	2100 x 1050	2400 x 1200
✓	✓	✓



without light



with light

lime pink

sizes available (mm)

1220 x 610	2100 x 1050	2400 x 1200
✓	✓	✓



without light



with light

pink pearl

sizes available (mm)

1220 x 610	2100 x 1050	2400 x 1200
✓	✓	✓



without light

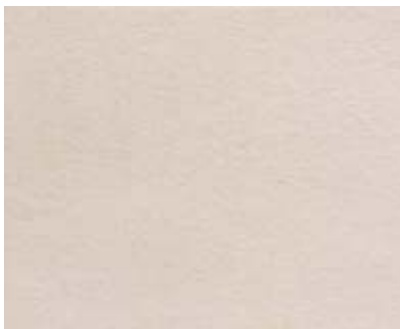


with light

teakwood sandstone

sizes available (mm)

1220 x 610	2100 x 1050	2400 x 1200
✓	✓	✓



without light



with light

white sandstone

sizes available (mm)

1220 x 610	2100 x 1050	2400 x 1200
✓	✓	✓



without light

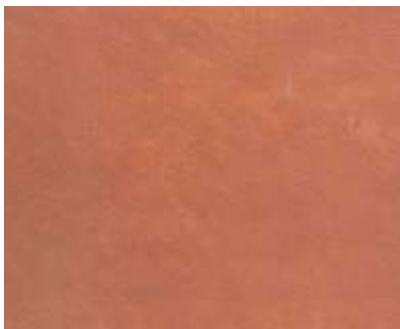


with light

tint mint sandstone

sizes available (mm)

1220 x 610	2100 x 1050	2400 x 1200
✓	✓	✓



without light



with light

red sandstone

sizes available (mm)

1220 x 610	2100 x 1050	2400 x 1200
✓	✓	✓



without light



with light

rainforest brown

sizes available (mm)

1220 x 610	2100 x 1050	2400 x 1200
✓	✓	✓

sandstone & marble

uv translucent



without light



with light

rainforest green

sizes available (mm)

1220 x 610	2100 x 1050	2400 x 1200
✓	✓	✓



without light



with light

rainbow sandstone

sizes available (mm)

1220 x 610	2100 x 1050	2400 x 1200
✓	✓	✓



without light



with light

monsoon black

sizes available (mm)

1220 x 610	2100 x 1050	2400 x 1200
✓	✓	✓



without light



with light

ice black

sizes available (mm)

1220 x 610	2100 x 1050	2400 x 1200
✓	✓	✓

sandstone & marble

uv translucent



without light



with light

spider white

sizes available (mm)

1220 x 610	2100 x 1050	2400 x 1200
✓	✓	✓



without light



with light

spider black

sizes available (mm)

1220 x 610	2100 x 1050	2400 x 1200
✓	✓	✓



without light



with light

silvia

sizes available (mm)

1220 x 610	2100 x 1050	2400 x 1200
✓	✓	✓

fabric backing

stone veneer
swatches



slate / mica colors**fabric backing****indian autumn****sizes available (mm)**

1220 x 610	2100 x 1050	2400 x 1200
✓	✓	✓

**indian autumn rustic****sizes available (mm)**

1220 x 610	2100 x 1050	2400 x 1200
✓	✓	✓

**sanjayani white****sizes available (mm)**

1220 x 610	2100 x 1050	2400 x 1200
✓	✓	✓

**multi color****sizes available (mm)**

1220 x 610	2100 x 1050	2400 x 1200
✓	✓	✓

**multi color grey****sizes available (mm)**

1220 x 610	2100 x 1050	2400 x 1200
✓	na	na

**multi pink****sizes available (mm)**

1220 x 610	2100 x 1050	2400 x 1200
✓	✓	✓

**california gold****sizes available (mm)**

1220 x 610	2100 x 1050	2400 x 1200
✓	✓	✓

**terra red****sizes available (mm)**

1220 x 610	2100 x 1050	2400 x 1200
✓	✓	✓

**tan****sizes available (mm)**

1220 x 610	2100 x 1050	2400 x 1200
✓	✓	✓

slate / mica colors**fabric backing****d. black**

sizes available (mm)		
1220 x 610	2100 x 1050	2400 x 1200
✓	✓	✓

**black**

sizes available (mm)		
1220 x 610	2100 x 1050	2400 x 1200
✓	✓	✓

**copper**

sizes available (mm)		
1220 x 610	2100 x 1050	2400 x 1200
✓	✓	✓

**copper-new**

sizes available (mm)		
1220 x 610	2100 x 1050	2400 x 1200
✓	✓	✓

**jeera green**

sizes available (mm)		
1220 x 610	2100 x 1050	2400 x 1200
✓	✓	✓

**ocean green**

sizes available (mm)		
1220 x 610	2100 x 1050	2400 x 1200
✓	✓	✓

**d. green**

sizes available (mm)		
1220 x 610	2100 x 1050	2400 x 1200
✓	✓	✓

**golden**

sizes available (mm)		
1220 x 610	2100 x 1050	2400 x 1200
✓	✓	✓

**silver shine**

sizes available (mm)		
1220 x 610	2100 x 1050	2400 x 1200
✓	✓	✓

slate / mica colors**fabric backing****silver shine gold**

sizes available (mm)		
1220 x 610	2100 x 1050	2400 x 1200
✓	✓	✓

**burning forest copper**

sizes available (mm)		
1220 x 610	2100 x 1050	2400 x 1200
✓	✓	✓

**galaxy black**

sizes available (mm)		
1220 x 610	2100 x 1050	2400 x 1200
✓	✓	✓

**silver grey**

sizes available (mm)		
1220 x 610	2100 x 1050	2400 x 1200
✓	✓	✓

**star galaxy**

sizes available (mm)		
1220 x 610	2100 x 1050	2400 x 1200
✓	na	na

**ice pearl**

sizes available (mm)		
1220 x 610	2100 x 1050	2400 x 1200
✓	na	na

slate / mica colors

fabric backing



green pearl

sizes available (mm)		
1220 x 610	2100 x 1050	2400 x 1200
✓	na	na



jade green

sizes available (mm)		
1220 x 610	2100 x 1050	2400 x 1200
✓	na	na



cal grey

sizes available (mm)		
1220 x 610	2100 x 1050	2400 x 1200
✓	✓	✓



mal grey

sizes available (mm)		
1220 x 610	2100 x 1050	2400 x 1200
✓	✓	✓

sandstone & marble**fabric backing****teakwood sandstone**

sizes available (mm)		
1220 x 610	2100 x 1050	2400 x 1200
✓	na	na

**white sandstone**

sizes available (mm)		
1220 x 610	2100 x 1050	2400 x 1200
✓	na	na

**tint mint sandstone**

sizes available (mm)		
1220 x 610	2100 x 1050	2400 x 1200
✓	na	na

**red sandstone**

sizes available (mm)		
1220 x 610	2100 x 1050	2400 x 1200
✓	na	na

**rainforest brown**

sizes available (mm)		
1220 x 610	2100 x 1050	2400 x 1200
✓	na	na

**ice black**

sizes available (mm)		
1220 x 610	2100 x 1050	2400 x 1200
✓	na	na

sandstone & marble**fabric backing****rainbow sandstone**

sizes available (mm)		
1220 x 610	2100 x 1050	2400 x 1200
✓	na	na

**monsoon black**

sizes available (mm)		
1220 x 610	2100 x 1050	2400 x 1200
✓	na	na

**rainforest green**

sizes available (mm)		
1220 x 610	2100 x 1050	2400 x 1200
✓	na	na

**spider white**

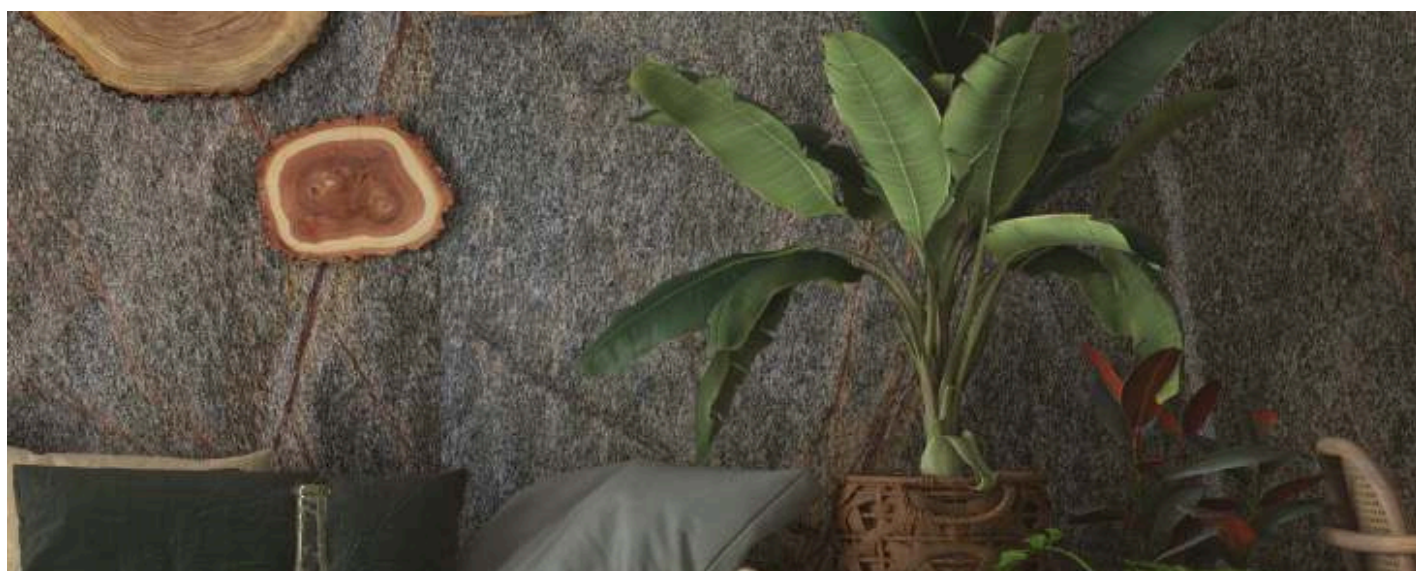
sizes available (mm)		
1220 x 610	2100 x 1050	2400 x 1200
✓	na	na

**spider black**

sizes available (mm)		
1220 x 610	2100 x 1050	2400 x 1200
✓	na	na

**silvia**

sizes available (mm)		
1220 x 610	2100 x 1050	2400 x 1200
✓	na	na



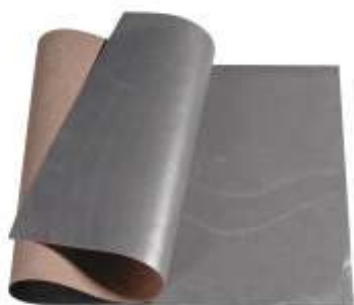
cellulose backing

stone veneer
swatches



slate / mica colors

cellulose backing



black

sizes available (mm)		
1220 x 610	2100 x 1050	2400 x 1200
✓	na	na



california gold

sizes available (mm)		
1220 x 610	2100 x 1050	2400 x 1200
✓	na	na



d. black

sizes available (mm)		
1220 x 610	2100 x 1050	2400 x 1200
✓	na	na



indian autumn

sizes available (mm)		
1220 x 610	2100 x 1050	2400 x 1200
✓	na	na



indian autumn rustic

sizes available (mm)		
1220 x 610	2100 x 1050	2400 x 1200
✓	na	na



multi color

sizes available (mm)		
1220 x 610	2100 x 1050	2400 x 1200
✓	na	na



multi pink

sizes available (mm)		
1220 x 610	2100 x 1050	2400 x 1200
✓	na	na



sanjayani white

sizes available (mm)		
1220 x 610	2100 x 1050	2400 x 1200
✓	na	na



tan

sizes available (mm)		
1220 x 610	2100 x 1050	2400 x 1200
✓	na	na

slate / mica colors

cellulose backing



terra red

sizes available (mm)		
1220 x 610	2100 x 1050	2400 x 1200
✓	na	na



burning forest copper

sizes available (mm)		
1220 x 610	2100 x 1050	2400 x 1200
✓	na	na



copper

sizes available (mm)		
1220 x 610	2100 x 1050	2400 x 1200
✓	na	na



copper-new

sizes available (mm)		
1220 x 610	2100 x 1050	2400 x 1200
✓	na	na



d. green

sizes available (mm)		
1220 x 610	2100 x 1050	2400 x 1200
✓	na	na



galaxy black

sizes available (mm)		
1220 x 610	2100 x 1050	2400 x 1200
✓	na	na

slate / mica colors

cellulose backing



golden

sizes available (mm)		
1220 x 610	2100 x 1050	2400 x 1200
✓	na	na



jeera green

sizes available (mm)		
1220 x 610	2100 x 1050	2400 x 1200
✓	na	na



ocean green

sizes available (mm)		
1220 x 610	2100 x 1050	2400 x 1200
✓	na	na



silver grey

sizes available (mm)		
1220 x 610	2100 x 1050	2400 x 1200
✓	na	na



silver shine

sizes available (mm)		
1220 x 610	2100 x 1050	2400 x 1200
✓	na	na

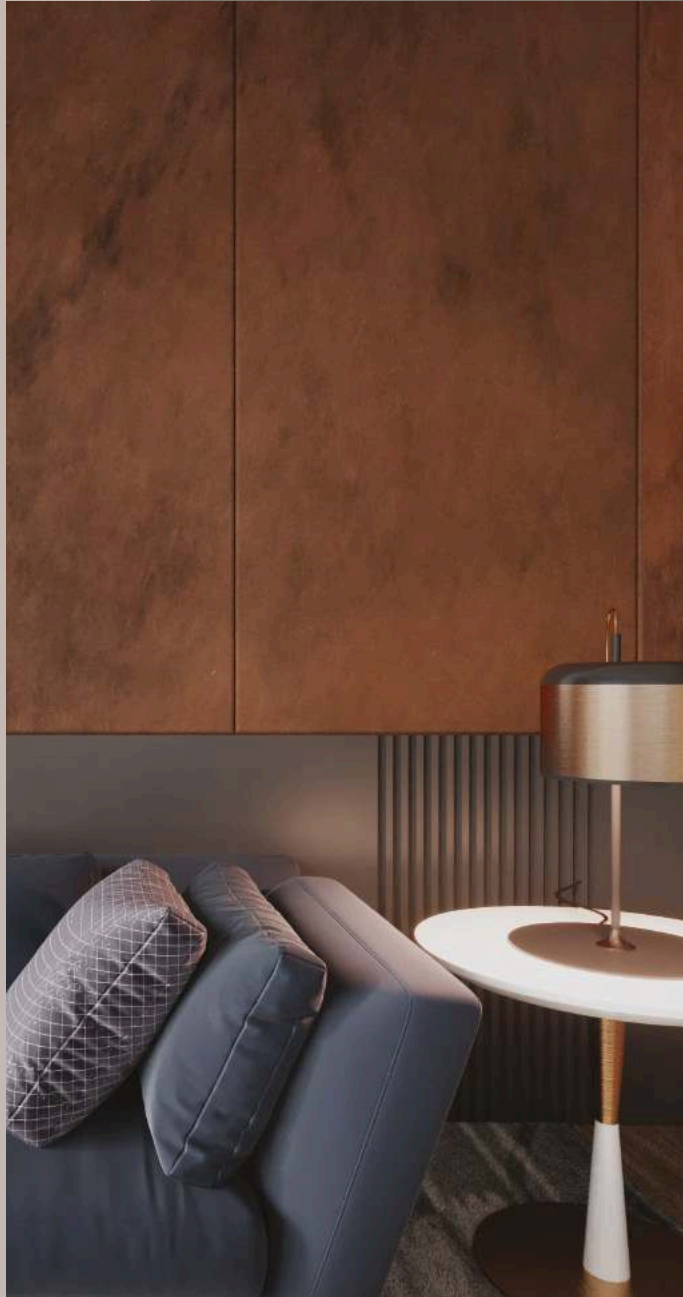


silver shine gold

sizes available (mm)		
1220 x 610	2100 x 1050	2400 x 1200
✓	na	na

metallic veneer

stone veneer
swatches



metallic veneers	nr grade
------------------	----------



copper metal finish

sizes available (mm)		
1220 x 610	2100 x 1050	2400 x 1200
✓	✓	✓



gold metal finish

sizes available (mm)		
1220 x 610	2100 x 1050	2400 x 1200
✓	✓	✓



silver metal finish

sizes available (mm)		
1220 x 610	2100 x 1050	2400 x 1200
✓	✓	✓



violet metal finish

sizes available (mm)		
1220 x 610	2100 x 1050	2400 x 1200
✓	✓	✓



blue metal finish

sizes available (mm)		
1220 x 610	2100 x 1050	2400 x 1200
✓	✓	✓

metallic veneers**nr grade****green metal finish****sizes available (mm)**

1220 x 610	2100 x 1050	2400 x 1200
✓	✓	✓

**pink metal finish****sizes available (mm)**

1220 x 610	2100 x 1050	2400 x 1200
✓	✓	✓

**gold metal finish****sizes available (mm)**

1220 x 610	2100 x 1050	2400 x 1200
✓	✓	✓

**red metal finish****sizes available (mm)**

1220 x 610	2100 x 1050	2400 x 1200
✓	✓	✓

**orange metal finish****sizes available (mm)**

1220 x 610	2100 x 1050	2400 x 1200
✓	✓	✓

rust veneers

nr grade



rust veneer

sizes available (mm)

1220 x 610	2100 x 1050	2400 x 1200
✓	✓	✓

concrete veneer

stone
veneer
swatches

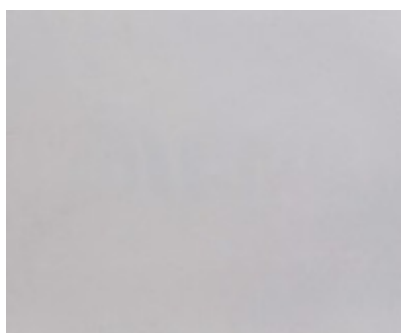


concrete veneers**nr grade****ivory (with holes)****sizes available (mm)**

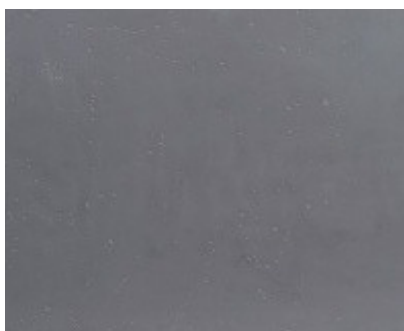
1220 x 610	2400 x 1200	3000 x 1250
✓	✓	✓

**white (with holes)****sizes available (mm)**

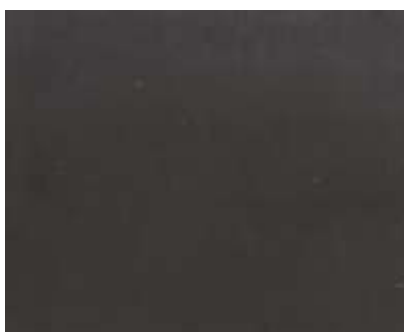
1220 x 610	2400 x 1200	3000 x 1250
✓	✓	✓

**light grey (with holes)****sizes available (mm)**

1220 x 610	2400 x 1200	3000 x 1250
✓	✓	✓

**dark grey (with holes)****sizes available (mm)**

1220 x 610	2400 x 1200	3000 x 1250
✓	✓	✓

**black (with holes)****sizes available (mm)**

1220 x 610	2400 x 1200	3000 x 1250
✓	✓	✓



concrete veneers	nr grade
------------------	----------



grey cv 1

sizes available (mm)		
1220 x 610	2400 x 1200	3000 x 1250
✓	✓	✓



grey cv 2

sizes available (mm)		
1220 x 610	2400 x 1200	3000 x 1250
✓	✓	✓



grey cv 3

sizes available (mm)		
1220 x 610	2400 x 1200	3000 x 1250
✓	✓	✓



blue cv 1

sizes available (mm)		
1220 x 610	2400 x 1200	3000 x 1250
✓	✓	✓



blue cv 2

sizes available (mm)		
1220 x 610	2400 x 1200	3000 x 1250
✓	✓	✓



blue cv 3

sizes available (mm)		
1220 x 610	2400 x 1200	3000 x 1250
✓	✓	✓



black cv 1

sizes available (mm)		
1220 x 610	2400 x 1200	3000 x 1250
✓	✓	✓



black cv 2

sizes available (mm)		
1220 x 610	2400 x 1200	3000 x 1250
✓	✓	✓



black cv 3

sizes available (mm)		
1220 x 610	2400 x 1200	3000 x 1250
✓	✓	✓

mosaic 3D, plain and

peel & stick veneer

stone
veneer
swatches



3d mosaic veneer

nr grade



black

sizes available (mm)		
150 x 600	1200 x 600	2100 x 1050
✓	✓	na



burning forest copper

sizes available (mm)		
150 x 600	1200 x 600	2100 x 1050
✓	✓	na



indian autumn rustic

sizes available (mm)		
150 x 600	1200 x 600	2100 x 1050
✓	✓	na



tan

sizes available (mm)		
150 x 600	1200 x 600	2100 x 1050
✓	✓	na



silver grey

sizes available (mm)		
150 x 600	1200 x 600	2100 x 1050
✓	✓	na



backside of peel & stick

sizes available (mm)		
150 x 600	1200 x 600	2100 x 1050
✓	na	na



plain mosaic veneer**nr grade****black**

sizes available (mm)		
150 x 600	1200 x 600	2100 x 1050
✓	✓	na

**burning forest copper**

sizes available (mm)		
150 x 600	1200 x 600	2100 x 1050
✓	✓	na

**indian autumn rustic**

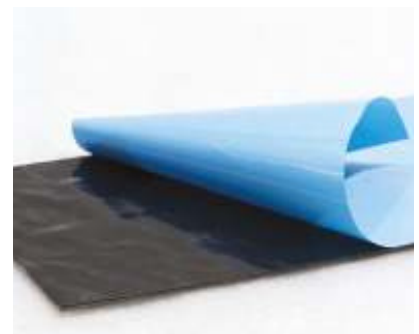
sizes available (mm)		
150 x 600	1200 x 600	2100 x 1050
✓	✓	na

**tan**

sizes available (mm)		
150 x 600	1200 x 600	2100 x 1050
✓	✓	na

**silver grey**

sizes available (mm)		
150 x 600	1200 x 600	2100 x 1050
✓	✓	na

**backside of peel & stick**

sizes available (mm)		
150 x 600	1200 x 600	2100 x 1050
✓	na	na

features & installation

applications

ultra-thin slate stone is a natural stone veneer that can be fixed to many different indoor and outdoor surfaces, including:

- ▮ architectural
- ▮ interior & exterior
- ▮ doors & cabinets
- ▮ furniture
- ▮ trim & backsplashes
- ▮ marine & rv
- ▮ kitchens
- ▮ bathrooms
- ▮ flooring
- ▮ signage

its light weight and flexibility are appropriate for many applications such as wall panelling, building cladding, and vertical/horizontal surfaces not previously considered for stone due to weight or flaking issues.

backing & substrates

our natural stone veneer laminates come in several finishes like fiberglass, fabric, and cellulose backing. each is suited for different applications. the fibreglass backing is black in colour with a seam in the middle, which is visible when light passes through it.

thin slate stone can be applied to mdf, hdf boards, styrofoam sheets, melamine board, concrete, brick, concrete blocks and slabs, mortar-plastered walls, drywall, plywood, acrylic and other plastic sheets.



properties

look & finish

- ↪ the natural graininess and textural irregularities of stone further enhance the beauty of these thin, flexible veneers.
- ↪ it is natural to find colour or texture variations; hence, stone veneer cannot be guaranteed to match with each lot.

↪ we recommend that material should be accepted in lots of 20, 40, 50 sheets to match. large orders will be executed in 25, 40, 50 sheets to match. large orders will be executed in bundles of 25 sheets with 2-3 matching lots in each bundle.

- ↪ exceptions of large lots are also a possibility.

heat & temperature resistance

- ↪ the natural stone layer keeps them protected from extreme light, heat and temperature conditions.
 - ↪ slate stone veneer can handle high thermal contraction or expansions of most standard construction materials.
 - ↪ it also handles both high temperatures and freezing without cracking.
- curvature & bending

- ↪ thin slate stone veneers can be bent with the same flexibility as any plastic sheet product. the backing used gives it enough strength and flexibility.
- ↪ they can be bent in concave, convex, arched or radial forms, depending on the nature of curve.
- ↪ they can be bent or flexed to a radius of 380 mm along the 1220-mm length. the 610-mm width will also have a slight flex to it.
- ↪ due to the nature of the different thickness of the individual items, the degree of radius varies per item. we recommend testing the flex of the considered item prior to final installation.

on-site usage

tools for cutting

- ↪ diamond blades used for marble and stone cutting can be used for cutting thin stone veneers.
- ↪ metal cutting tools can also be used to cut stone veneer.
- ↪ any standard carbide or diamond saw blades would work as well.

- slate stone veneers can be fixed onto surfaces using most standard laminate adhesives that have thick body or foaming quality. before application, clean, brush and degrease the receiving surface from dust, oils, etc.
- in the same installation, and depending on adhesive used, it may be necessary to prepare the back of the ultra-thin slate stone veneer with solvent or recommended primer by the adhesive manufacturer. we recommend doing a test area with any adhesive prior to final application.
- slate stone veneer is used for wall panels on mdf and hdf boards, furniture, woodworking machines, round column cladding, and numerous interior and exterior applications.
- it is also recommended for flooring or countertop applications after sealing the surface of the stone veneer with pu or epoxy sealers to avoid scratches/abrasion. polyurethane sealers can also be used if stone veneer is used for domestic applications.
- stone veneers can be directly fixed onto concrete floors and walls with the help of epoxy and other pu glues. they may also be used in illumination application such as lamp shades or backlight applications as translucent material or the other translucency applications.

adhesion & sealing

- knowledge of special adhesives, and the respective surfaces on which they are recommended, is critical to ensure superior installation when using ultra-thin slate stone veneers. we recommend testing the selected adhesive prior to proceeding with installation. please evaluate humidity and temperature of the environment first.
- in case of outdoor application, thermal expansion should be taken into account. thin slate stone is a veneer; it must expand and contract, which is recommended by the adhesive manufacturer. the bond must be tested by the installer before final installation.
- thin slate stone veneers can be sealed just like most slate/stone tiles. please follow manufacturer's instructions for best results. as sealants are offered in varying degrees of lustre or sheen, we recommended you confirm the reflectance prior to complete installation to get the desired effect.

recommended adhesives & fillers

- polyester-based gap filler putties → epoxies → silicone (with primer only) → polyurethane wood glues → thick latex-type adhesive, thin set, etc. (use only where air-drying can

take place)

- construction grade multi-purpose adhesives (e.g. liquid nails or pl premium polyurethane or similar)

note 1: the back of the thin slate stone veneer may require a filler-type adhesive in some cases. polyurethane wood glues work well for most applications to fill gaps. for wet applications like showers and bathroom, the use of epoxy is best.

note 2: pressure-sensitive adhesives are also recommended due to the even backing of the thin slate stone veneer. nowadays, you get this in ready-to-peel-and-use format (pressure-sensitive glue is applied on the back of thin slate stone veneers; this is covered with paper that you peel just before sticking).

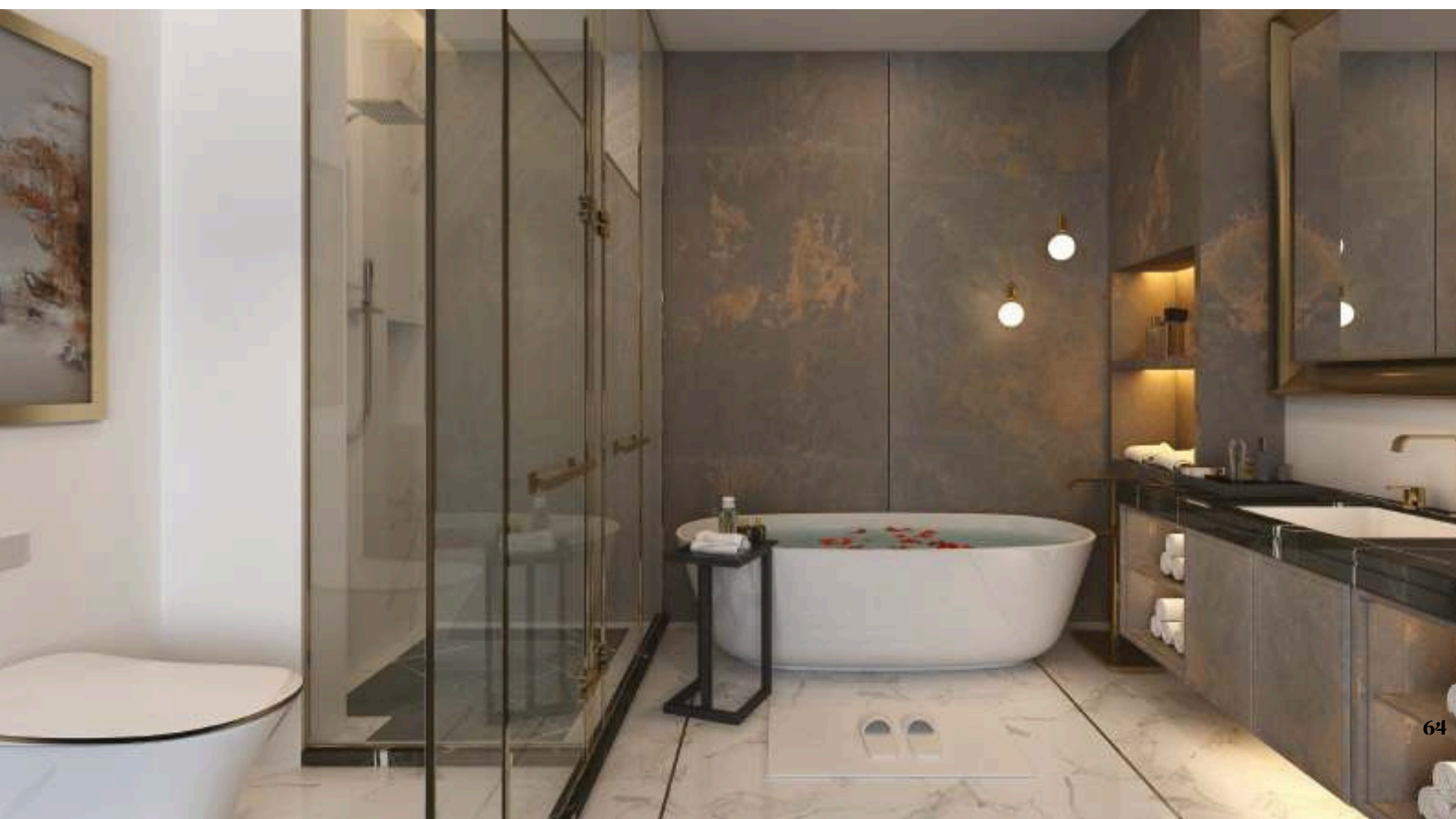
pressing

- thin slate stone veneers have natural, rough splittable surface with a tolerance of up to 2 mm. thickness-equalizing additions protect the veneers from being damaged.
- silicon blanket is recommended for pressing 7 mm thick rubber plates with a shore grade of 50 and a temperature resistance of at least +80° c.
- it is important that the rubber mat has an insulating effect, so that the press time can be therefore extended depending on the adhesive type and press temperature of 80° c, press time should be approximately 6 minutes.
- depending on the press configuration, the pressure has to be carefully set.

tiling

- thin slate stone veneer can be used to create a tiled effect by leaving a grout joint between cut pieces of material. test results have shown that epoxy grouts work well to fill between the cut veneers. by removing the material just under the grout joint, a deeper grout can be achieved.
- epoxy grouts are available in many colours to match or coordinate with the different colours of our ultra-thin slate stone.
- on final clean-up of the epoxy with a sponge, the epoxy can also be used to seal and fill the stone surface.

our recommendation: in this installation, the entire surface of the ultra-thin slate stone should be sealed with appropriate sealer and impregnator as a final step to ensure complete satisfaction.



resin, glue & sealers for flooring & exterior applications

polyester resin sheets (nr grade)

- thin slate stone veneer sheets are mainly composed of fiberglass and polyester resin.
 - there are three kinds of resin: normal sheet grade resin, fire-retardant resin, and ultra-violet resin
 - the nr grade sheet material is made of normal polyester grade resin.
- fr resin sheets (fr grade)

- fr resin sheet is made from fire-retardant polyester resin. the main component of the sheet is resin, which in this case is based on isophthalic resin, manufactured by the physical addition of halogenated additives and antimony trioxide to give excellent fire-retardant properties with reference to is 6746.
- this resin has the added advantage of chemical resistance to several acids, solvents, etc.
- recommended for use where fire hazards are one of the main considerations besides the requirement of chemical corrosion resistance.

polyester resin sheets (translucent uv grade)

- thin slate stone veneer sheets are mainly composed of fiberglass and polyester resin.
- sheets made from ultra-violet resin are translucent and made from ultra-violet resin.

pva stone veneer (fabric backing grade)

- this material is made with cotton fabric and poly-vinyl acetate copolymer glue, which is white emulsion and is water based.
- the final product is called fabric backing stone veneer because it is 100% eco-friendly and without any solvent-based glue.
- this is environment-friendly and is very flexible as compared to normal polyester resin material.

stone veneer on mdf/hdf

- heat press is required to press stone veneer on mdf/hdf under 10 tons pressure and 120° centigrade heat to activate the glue for 2-5 minutes for good industrial results.
- glues recommended are pu hot melt glue and white water-based polymer emulsion called ethylene vinyl acetate copolymer glue. the glue can be found in local markets.

recommended websites for glues & sealers

- | | |
|--|--|
| – www.laticrete.com | – www.micraclesealants.com |
| – www.akemi.com | – www.keliberit.com |
| – www.wacker.com | – www.henkel.com |
| – www.lantania.it | – www.mapei.com |

these companies are multinationals and the local dealer can be contacted in the area. visit their websites for recommended glues for nr grade sheet application on mdf & hdf. companies may recommend white emulsion polymer glue or polyurethane foaming glue or polyurethane double-component non-foaming glue depending on the hot press machine available with the user.

stone veneer on concrete or mortar cement plastered wall
or gypsum board

epoxy-based grouts available in the market with flexibility component are recommended. contact local dealer/engineer of the area by visiting websites www.mapei.com & www.laticrete.com or local suppliers of the similar products.

self-adhesive (peel and stick) stone veneer

it is coated with pressure-sensitive glues made in india. the pressure-sensitive glue paper is imported from europe and can be made available on request.

sealers and impregnators

→ stone veneer requires sealers and impregnators for stain and scratch

protection.

- a stone sealer/impregnator is a penetrating sealant that provides protection against both water- and oil-borne stains. these properties are chemically referred to as hydrophobic and oleophobic effects.
- the sealing properties normally last for several years. this property is particularly important in confined or occupied areas and in large-scale projects where clean air standards are strictly enforced.
- the sealers and impregnators available in the market are polyurethane matt and glossy, water-based, solvent-based and silicone-based sealers and impregnators. all these sealers are similar to the ones used in sand-stone and slate industries.

websites for sealers & impregnators

for your local dealer, please visit

www.micraclesealants.com

www.laticrete.com

www.wacker.com

www.akemi.com

flooring

- stone veneer with more quartz content is suitable for flooring on mdf & hdf and is being produced at present in europe and asia.
- if samples are required, they can be forwarded on the buyer's courier number.

weight of thin slate stone veneer

sr.no	size	sqr. mtr of sheet	weight of sheet	weight per sq. mtr.	average weight of sheet	average weight per sq. mtr.
	in mm	m ²	kgs min - max	kgs min-max	kgs	kgs
1	1220 x 610	0.744	1.30-2.05	1.75-2.75	1.67	2.25
2	2100 x 1050	2.205	3.85-6.62	1.75-3.00	5.24	2.37
3	2400 x 1200	2.88	5.10-8.65	1.75-3.00	6.88	2.37

application of flexible real stone veneer

#	stone veneer finish	constituents	applications	remarks
1	nr grade (fiberglass backing)	stone layer + polyester resin + fiberglass	interior & exterior door & cabinets, furniture,kitchens, bathrooms, showers, flooring for low traffic areas, signage- wall cladding, trim & backsplashes etc.	thickness : 1.5 - 2 mm
2	uv translucent (fiberglass backing)	stone layer + uv resin + fiberglass	interior, exterior, door & cabinets with back lighting, furniture with backlighting, kitchens & any decoration purpose where translucency is required and backlighting is done.	thickness : 1.5 - 2 mm
3	pva grade (fabric backing sheets)	stone layer + water-based glue (polyvinyl acetate (pva)) copolymer + cotton fabric	special extra flexible applications like stationary, bags, edges of doors & furniture, dress accessories, bags accessories, shoes accessories, calendars, menus etc. more suitable for indoor applications. interior, exterior, door & cabinets,	thickness: 0.5 - 0.7 mm
4	real sand-stone veneer (fiberglass backing)	stone layer + polyester resin + fiberglass	furniture, kitchens, bathrooms, showers, flooring, signage, wall cladding, trim & backsplashes etc.	thickness : 1.5 - 3 mm



data sheet for thin slate stone veneer

#	material	qty kg/sq. mtr
1	polyester resin/pva adhesive	1.670
2	backing material (fibre glass/cotton fabric)	0.200
3	natural stone	0.380
	total weight per sq mtr.	2.000 -2.250

1

thickness of material		
#	particulars	thickness in mm
4	thickness of natural stone layer	0.50
5	thickness of other chemicals backing	0.80
6	total thickness of slate stone veneer sheet	1.20-1.50

tests conducted at testing laboratory in india which is iso 9001:2000 approved internationally		test value		protocol
		slate	mica	
7	water absorption, % by wt. (test carried out on thin slate specimen)	2.50	1.9	astm c-121 guidelines
8	water absorption, % wt. (test carried out on thin slate specimen pasted on marble piece)	0.17	0.12	astm c-97 guidelines
9	abrasion test -average wear, mm-max. wear on individual specimen, mm	0.7 0.8	0.9 1.0	is: 9162-1979 guidelines
10	density (mass per unit area, kg/m2)	1.45	1.66	is: 12866-1989 guidelines
11	compressive strength, mpa (at 10% deformation)	10	10	astm d 695-15 guidelines
12	tensile strength, mpa	51	51	astm d 638-14 guidelines



our values, our world

progress through
empowerment

Contact us

+971-552705715

+971-585262715

Dubai- Alfattan downtown

info@twodesignstudio.org

www.twodesignstudio.org

