

Motor Specifications for the Motorized Awning

110V / 220V

Warranty 2 years

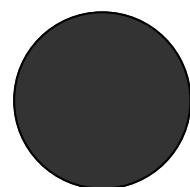
Awning Quality Assurance and Longevity

Frame: 8 years

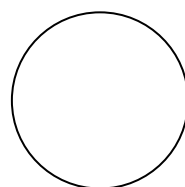
Fabric: 10 years

Motor: 2 years

Paint code for the Dark Grey Pergola



RAL 7016 Dark Gray



White



Available sizing, colors and functions

3 Sizing Options (ft)

10' x 7'

13' x 10'

16' x 10'

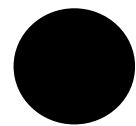
3 Awning functions options

Motorized

Manual

Hybrid with both manual
and motorized operations

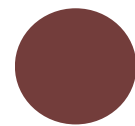
4 Acrylic Fabric Color options



Black



Green



Red

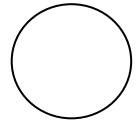


Beige

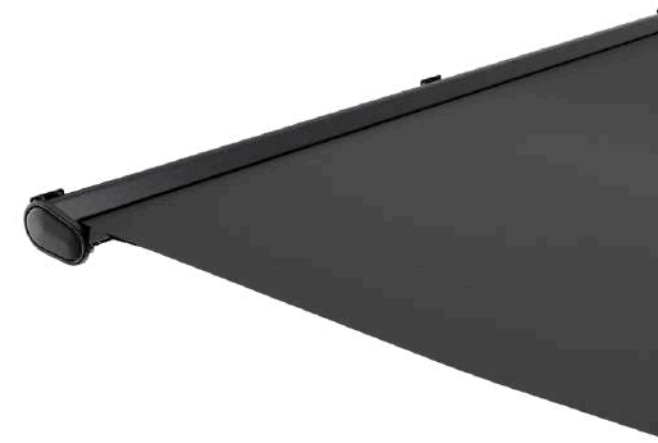
2 Awning Body color options



Dark Grey



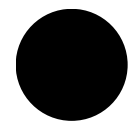
White



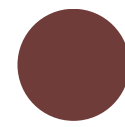
Awning Fabric

The awning fabric has very specific color codes. Fabric Booklet can be located in the: [Product Catalog](#).

4 Acrylic Fabric Color options



Black Sauleda 2170



Deep Red Sauleda 2101



Beige Sauleda 2042



Green Sauleda 2245

Notes of fabric

8 year color fastness

10 year warranty

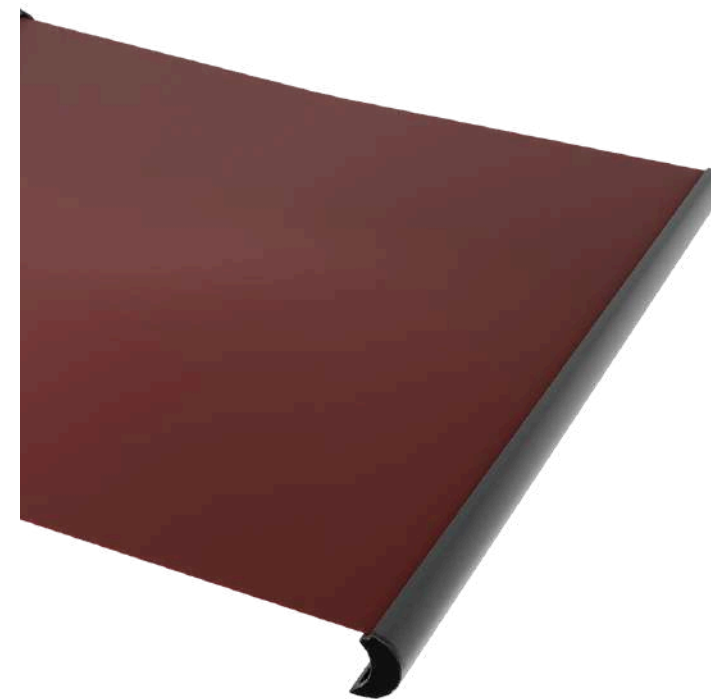
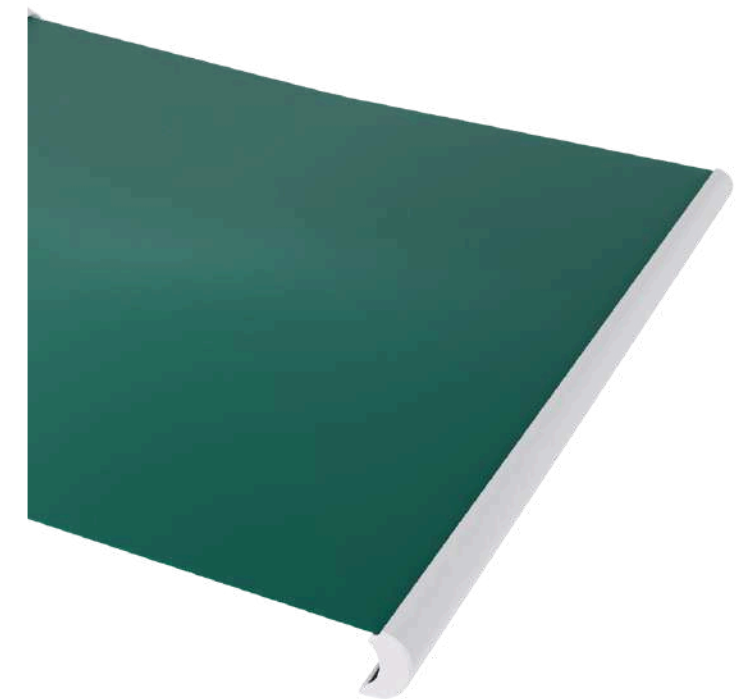
Imported from Spain

Awning Fabric

Weight: 300The Awning fabric is 100% solution dyed acrylic Spanish fabric. It is imported from Spain with supporting certificates: [Fabric Certificate](#)

Stitching and material thickness

Weight: 300 gr/m2



Accessories

Water Baffle

The water baffle is a sheet of aluminum that is fixed on top of the awnings and against the wall. Using a silicone gun a layer of silicone must be applied to seal the gap between the wall and baffle to become water tight.

Purpose

- Ø Prevent water from running down behind the awning
- Ø Can shield the top of the awning from extreme weather and damages.

Wind Sensor

The wind sensor is used to measure the outside wind speed and if the programmed speed is achieved automatically close the awning to prevent any damages.

Mobile App

The mobile app is used to open and close the awnings. At this moment it cannot turn the LED lighting on and off. That must be done using the awning remote control.

