

WIRELESS CNC REMOTE MANUAL



Please read this manual before operating or installing the wireless CNC remote.

TABLE OF CONTENTS

I	Package Contents	3
II	Installation Instructions	4
III	Wireless CNC Remote Operation Instructions	7
IV	Contact Information	9



PACKAGE CONTENTS

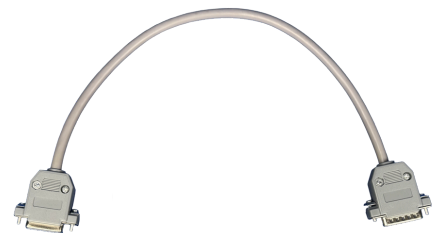
CNC Remote



Wireless Receiver



Male to Female Serial Cable



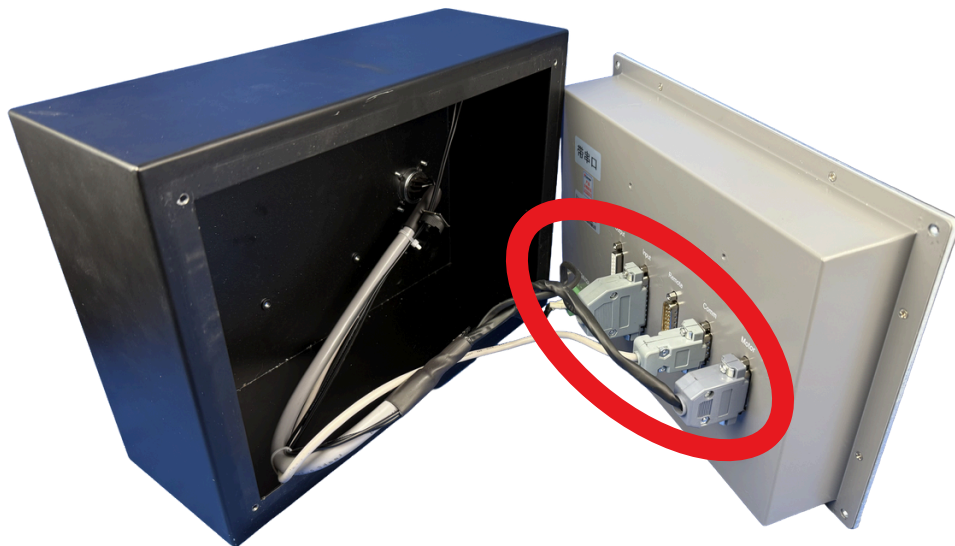
CNC Remote Manual

INSTALLATION INSTRUCTIONS

- Remove the operator station from the shell by unbolting the frame with a 3mm allen key.

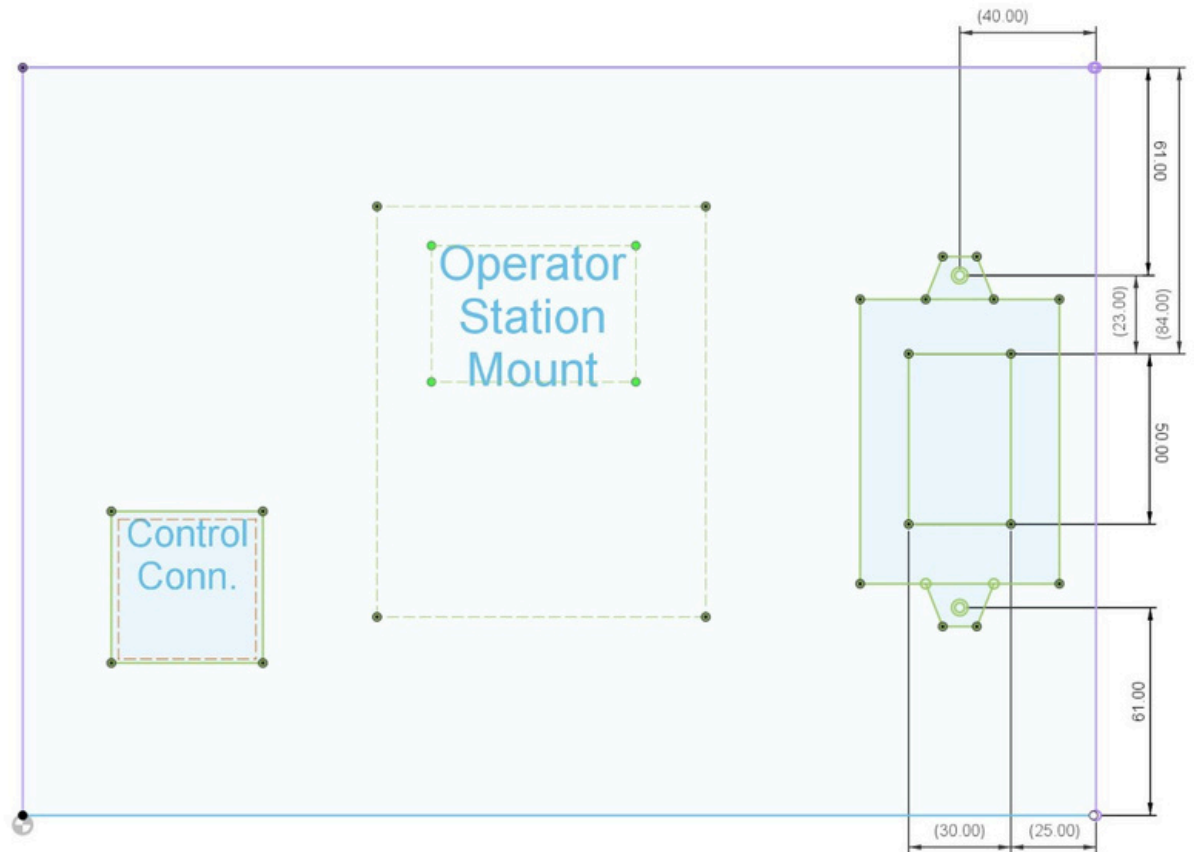


- Gently pull the operator station out from the shell and disconnect the cables with a Phillips Head screwdriver. Set the operator station aside.



INSTALLATION INSTRUCTIONS

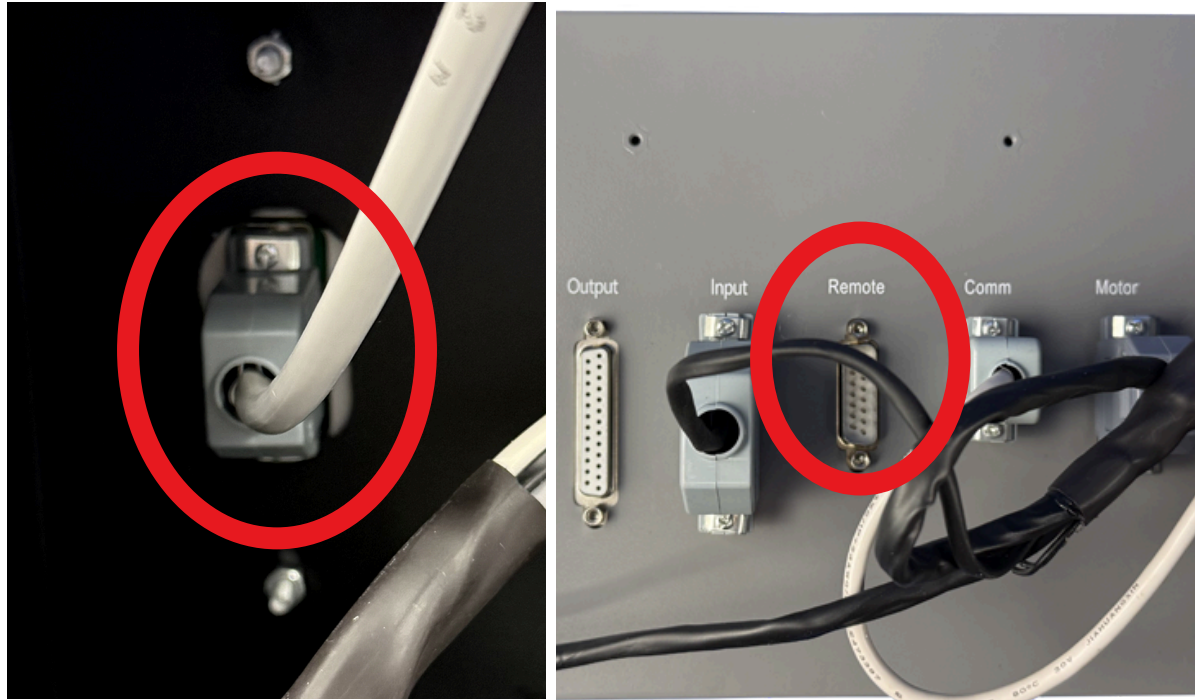
- On the back side of the shell, measure and mark out the installation location with the help of the diagram. The wireless receiver should be oriented with the two screws facing the top and bottom of the shell.



- The screw holes should be placed 40mm from the side of the shell, and 61mm from the top and bottom of the shell.
- The slot for the port of the wireless receiver should be 30mm wide and 50mm long. With the top of the slot being 23mm down from the top bolt and 23mm up from the bottom bolt.
- The slot should also be 25mm from the side of the shell.
- Once the installation location has been properly measured and marked, drill the screw holes and cut out the section for the wireless receiver to slot into.

INSTALLATION INSTRUCTIONS

- Plug the serial cable into the wireless receiver from inside the shell, and the opposite end into the port on the operator station marked “remote”.



- Re-attach the cables you disconnected earlier and bolt the operator station back into the shell.

WIRELESS CNC REMOTE OPERATION INSTRUCTIONS



- The **green "I"** key at the top of the remote is used to start a cutting process or, when in demo mode, to start a demo.
- The **red "O"** key at the top of the remote is used to stop or pause a cut or demo.
- The **F+-** keys are used to adjust the cut speed up or down incrementally.
- The **S+-** keys are used to adjust the torch height up and down.
- The **Close** key is used to cancel manual cutting processes.
- Pressing return brings the torch back to the position where the torch was last zeroed.
- **BWD** is used to run a file in reverse.
- **FWD** is used to run the torch forward during a cut.
- **Piercing** performs the pierce cycle and fires the torch.
- **Arc/Oxy** fires the plasma arc.
- **HC** is height control, and toggles the height control on or off.

WIRELESS CNC REMOTE OPERATION INSTRUCTIONS



- The Y+- keys are used to traverse the torch across the table on the Y-axis.
- The X+- are used to traverse the torch across the table on the X-axis.
- The diagonal arrow keys traverse the torch across the table on both the Y- and X-axes at the same time in the corresponding direction.
- Key number 5 toggles between three different manual move speed values that are considered “low”, “medium”, and “high”.

CONTACT INFORMATION



1-905-981-4256



sales@halo-innovations.ca



halo-innovations.ca

