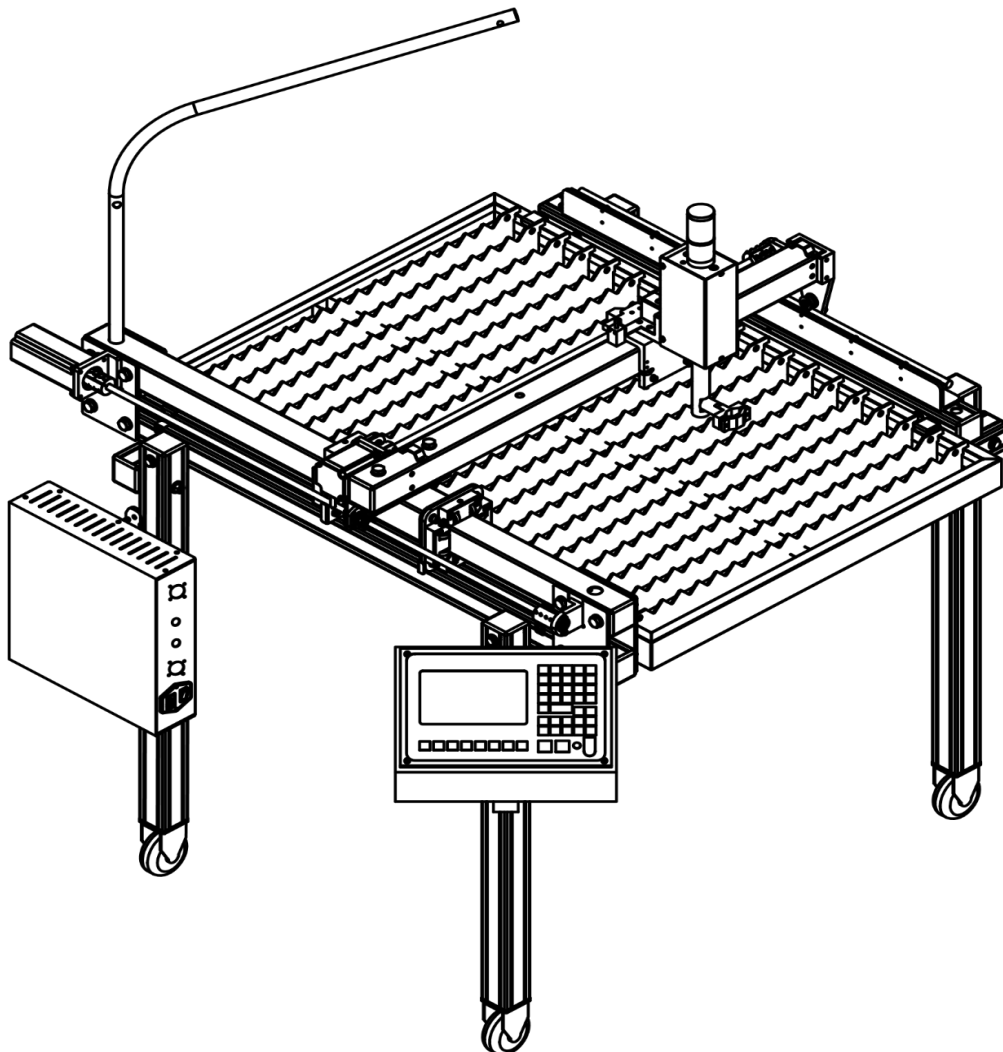




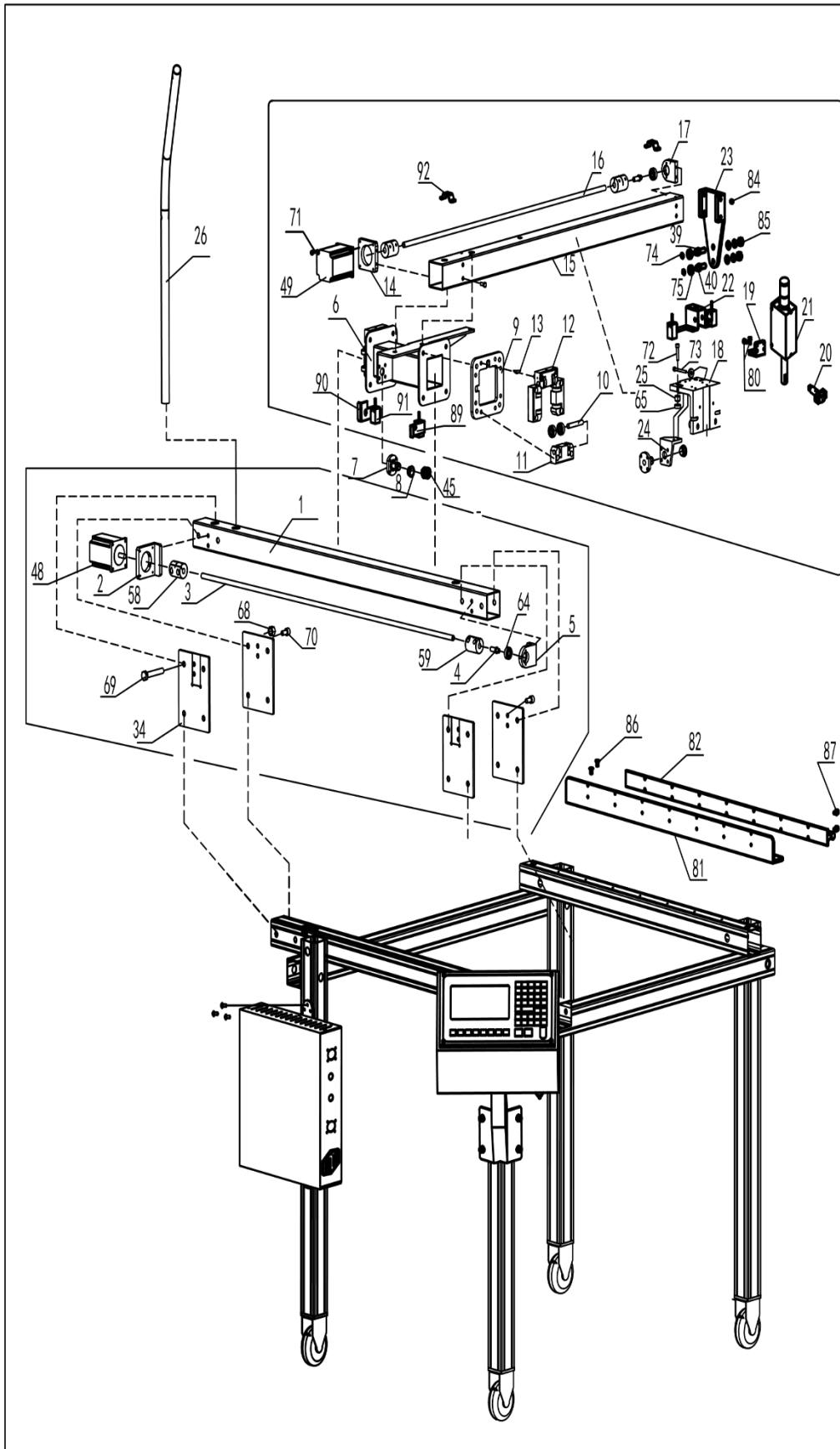
HC-2400

2'x2' CNC Plasma Table

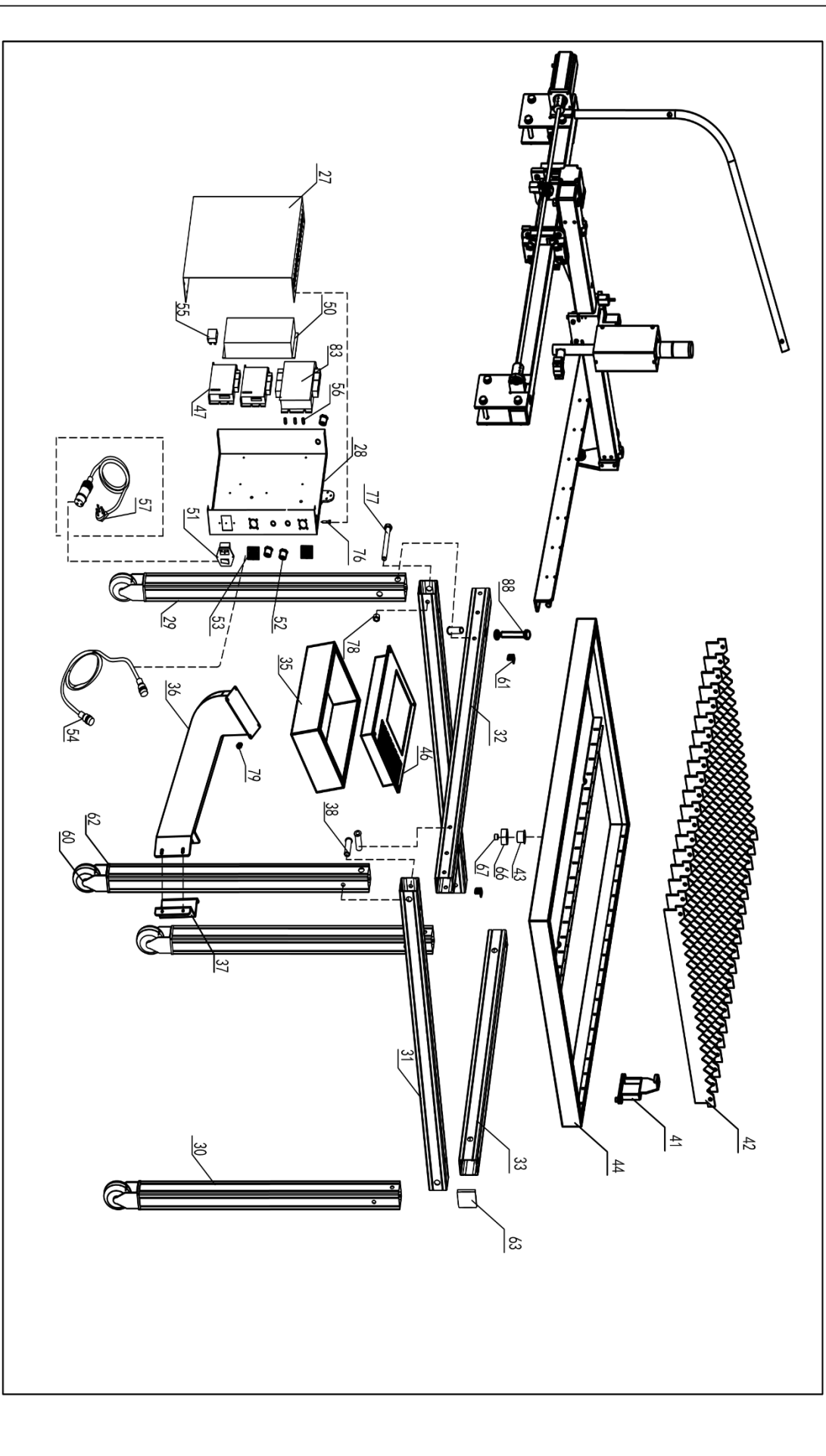
Exploded View and Parts List



2'x2' CNC Plasma Table: Exploded View of Plasma Cutting Table



2'x2' CNC Plasma Table: Exploded View of Plasma Cutting Table



List of Machined Parts				
Part #	Name	Quantity	Material Type	Details (D = Diameter)
1	Front Y-Axis Gantry Rail	1	Stainless steel	41.5*2.0*2.0" (0.07")
2	Y-Axis Stepper Motor Mounting Plate	1	LF6	
3	Y-Axis Drive Screw Rod	1	40Cr	35.5*0.37"D
4	Coupling B Axis	2	A3	
5	Y-Axis Bearing Seat	1	LF6	
6	Transverse Frame	1	A3	
7	Plastic Drive Screw Body	2	Nylon	
8	Spring Seat	2	Nylon	
9	Centering Locating Plate	2	45	
10	Cylindrical Shaft	8	45	
11	Seat for Adjusting Bearing	4	LF6	
12	Seat for Fixed Bearing	4	LF6	
13	Adjusting Block	4	40Cr	
14	X-Axis Stepper Motor Mounting Plate	1	LF6	
15	X-Axis Gantry Rail	1	Stainless steel	35.8*2.0*2.0" (0.07")
16	X-Axis Drive Screw Rod	1	40Cr	35.5*0.37"D
17	X-Axis Bearing Seat	1	LF6	
18	THC Moving Carrier	1	LF6	
19	THC Mounting Plate	1	LF6	
20	Torch Mount	1		
21	THC Motor Assembly	1		
22	X-Axis Limit Mounting Seat	1	SPCC	
23	Rear X-Axis End Assembly	1	LF6	
24	Drive Screw Body Mount	1	LF6	
25	Bushing for Raising Bearing	8	LF6	
26	Cable Support Arm	1	LF6	32.3*0.8"D (0.10")
27	Control Box Cover	1	SPCC	11.6*11.7*3.1" (0.04")
28	Control Box	1	SPCC	11.6*11.7*3.1" (0.04")
29	Standing Leg (Type 1)	2	LF6	28.3*2.0*2.0" (0.09")
30	Standing Leg (Type 2)	2	LF6	28.3*2.0*2.0" (0.09")
31	Side Frame	2	LF6	37.4*2.0*2.0" (0.09")
32	Front Frame	1	LF6	41.5*2.0*2.0" (0.09")

List of Machined Parts ctd.				
Part #	Name	Quantity	Material Type	Details
33	Rear Frame	1	LF6	32.9*2.0*2.0" (0.09")
34	Gantry Rail Clamping Plate	4	45	
35	Operator Station Box	1	SPCC	12.4*8.7*4.3 (0.06")
36	Control Panel Mount Arm	1	SPCC	
37	Mount Arm Bracket	1	SPCC	
38	Bolt Sleeve	20	LF6	
39	Eccentric Shaft	1	45	
40	Eccentric Shaft	1	45	
41	Table Mounting Clamp	4	SPCC	
42	Slat	19	Galvanized plate	26.9*2.1" (0.12")
43	Drain	1	Copper	
44	Water Table	1	304	40.2*27.8*2.1" (0.05")
45	Spring	2	Steel	
61	Y-Axis Limit Sensor	2	304	
81	Gantry Rail Mounting Plate	1	LF6	29.9*1.7*2.0" (4.2mm)
82	Rear Y-Axis Gantry Rail	1	SBR12	29.1*1.2*1.2" (0.43mm)
89	Y- Limit Proximity Switch Mount	1	SPCC	
90	Y+ Limit Proximity Switch Mount	1	SPCC	
92	X-Axis Limit Sensor	2	304	

List of Electrical Parts			
Part #	Name	Quantity	Specifications
46	Operator Station Control Panel	1	SF-2100CT
47	Motor Driver	2	422 drive
48	Y-Axis Stepper Motor	1	57H112H
49	X-Axis Stepper Motor	1	57H076H
50	Control Power Supply	1	HF-240W-S-24
51	Power Switch with Power Cable Receptacle	1	
52	LP12 Socket	3	
53	Y28M-7TK Socket	1	
54	Y28M-7TK Cable	1	240"
55	24V Relay	1	HK-19F-24V-SHC
56	Fuse	3	
57	Power Cable	1	73" Cable
83	Cutting Torch Height Controller	1	SF-HC25J2
91	Proximity Switch	4	TL-Q5MC1-Z

List of Purchased Parts

Part #	Name	Quantity	Specifications
58	Coupling A	2	1.12*1.496-0.375*0.315"
59	Coupling B	2	1.12*1.496-0.375*0.25"
60	Casters	4	3.0" Wheel Diameter
62	Caster Nut	4	
63	Plastic End Cap	14	2.0*2.0"
64	Deep Groove Ball Bearing	10	608
65	Deep Groove Ball Bearing	8	R4Z
66	1-Inch Nut	1	1" inner diameter
67	Drain Plug	1	
68	Hex Nut	12	$\frac{3}{8}$ "
69	Hex Bolt	8	$\frac{3}{8}$ *3"
70	Allen Bolt	22	$\frac{1}{4}$ * $\frac{3}{4}$ "
71	Allen Bolt	8	$\frac{1}{4}$ * $\frac{1}{2}$ "
72	Allen Bolt	4	$\frac{1}{4}$ *1 $\frac{1}{4}$ "
73	Allen Bolt	4	$\frac{1}{4}$ *1 $\frac{1}{2}$ "
74	Outer Circlip	2	φ8
75	Bearing	2	628
76	Allen Bolt	12	M5
77	Hex Bolt	8	$\frac{5}{16}$ *4 $\frac{1}{2}$ "
78	Hex Nut	10	$\frac{5}{16}$ "
79	Allen Bolt	8	M5
80	Allen Bolt	8	M6
84	Grub Screw	4	M6
85	Nut with Washer	2	M8
86	Sunk Head Bolt	8	M5
87	Sunk Head Bolt	14	M4
88	Hex Bolt	4	$\frac{3}{8}$ *3"