



DELUXE ALASKA SAMPLER

7 DAYS/7 NIGHTS

EXPLORE ALASKA BY RAILROAD

Available late May - early September 2022

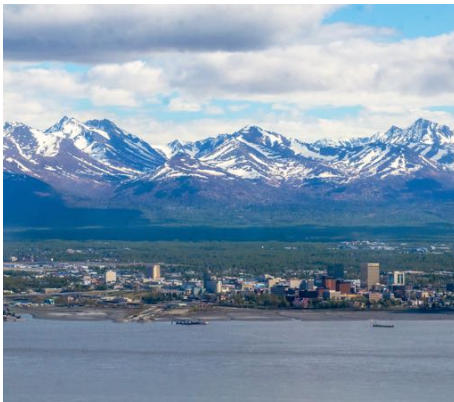
Travel Package Highlights:

- Ride the Coastal Classic, Glacier Discovery and Denali Star Trains
- Glacier & wildlife cruise in Kenai Fjords National Park
- Glacial river float trip
- Bus tour along the rugged Denali Highway

ITINERARY

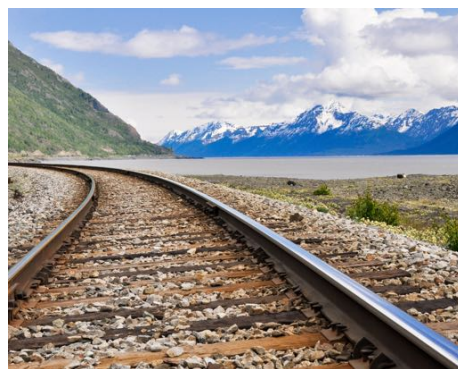
Day 1

- Arrive in Anchorage, Alaska's largest city. Book an excursion, or explore shops, museums, restaurants and breweries at your leisure. Overnight in Anchorage.



Day 2

From Anchorage, ride the Glacier Discovery Train along scenic Turnagain Arm to Portage where you'll disembark for lunch and a tour of the Alaska Wildlife Conservation Center – guaranteed bear sightings! Re-board the train to continue on to the Spencer Glacier Whistle Stop, where you'll raft amid glacial icebergs. Return by rail on a short train ride to Portage that evening. A motorcoach transfer from Portage to Girdwood gets you back in time for dinner. Overnight at the Hotel Alyeska.



TURNAGAIN ARM

RAIL: GLACIER DISCOVERY

- ROUTE: Anchorage-Girdwood
- DEPART: 9:45 AM ARRIVE: 10:55 AM

TOUR: BEARS, TRAINS AND ICEBERGS

Your Day at a Glance:

- 1. Visit to the Alaska Wildlife Conservation Center
- 2. Train ride to Spencer Whistle Stop
- 3. Iceberg Float on Spencer Glacier Lake
- 4. Re-board the Glacier Discovery Train from the Placer River
- 5. Transfer from Portage to Anchorage or Girdwood.

Enjoy guaranteed wildlife sightings at Alaska's premier rehabilitation center for injured and orphaned animals, the Alaska Wildlife Conservation Center, where you will view bears, caribou, wood bison and more. Try to touch an iceberg as your float across the majestic iceberg laden lake on your Spencer Glacier Lake tour. Enjoy stunning panoramic views of the Spencer Glacier and surrounding mountains. From there, you will begin your trip down the pristine Placer River still affording grand views of the hanging glaciers and mountains. Rain gear, rubber boots and snack are provided. Warm clothing recommended.



ALASKA BEAR AND CARIBOU

- Tour Times: Alaska Wildlife Conservation Center tour 11:30 AM - 1:15 PM then Spencer Iceberg Float 1:45 PM - 4:30 PM; approximately 2 hours are spent on the water.
- Transfers: Yes, to and from train stop
- Meals: Yes, sack lunch of sandwich/wrap, fruit, chips and dessert. If you have special dietary needs, please let us know in advance.
- Wheelchair Accessible: Yes - Tour; No - Shuttle/Bus



RAIL: GLACIER DISCOVERY

- ROUTE: Portage 2nd Stop-Spencer Whistle Stop
- DEPART: 1:25 PM ARRIVE: 1:45 PM

RAIL: GLACIER DISCOVERY

- ROUTE: Spencer Whistle Stop-Portage 2nd Stop

- DEPART: 4:40 PM ARRIVE: 5:15 PM
- A motorcoach transfer from Portage to Girdwood gets you back in time for dinner.

Overnight at the Hotel Alyeska.

Day 3

Board the Coastal Classic Train for a breathtaking ride along Turnagain Arm and through scenic Grandview. Upon arrival in Seward, embark on a cruise of Kenai Fjords National Park in search of glaciers, whales, sea lions and more. The onboard Park Ranger ensures you'll stay informed and entertained. Overnight in Seward.



KENAI

RAIL: COASTAL CLASSIC

- ROUTE: Girdwood-Seward
- DEPART: 8:05 AM ARRIVE: 11:15 AM (Trains may depart early from the Girdwood stop when all reserved passengers have boarded.)

7.5 HOUR KENAI FJORDS CRUISE - *Make sure to bring your camera on this 6-hour wildlife and glacier cruise, where you'll watch for puffins, eagles, otters, Steller sea lions, whales, and glaciers, as you cruise Resurrection Bay and the Kenai Fjords.* Our cruise explores the world of whales, wildlife, and glaciers found in Kenai Fjords National Park. Our experienced captains will fully narrate your journey and will point out the spectacular sights while providing information on the area's wildlife, history, and geology. You will spend time in front of the towering Aialik or Holgate tidewater glacier and watch for calving, where giant chunks of glacial ice break off and crash into the water. Roundtrip is approximately 110 Miles (177 km).

Traveling deep inside Kenai Fjords National Park, this cruise is ideal for photographers, birders and whale-watching enthusiasts. The 7.5 hours spent on the water will fly by as the captain seeks out the best wildlife viewing in the area. You will spend time in front of the impressive Holgate and Aialik glaciers, actively-calving tidewater glaciers. Also explore the islands and coves of the Alaska Maritime National Wildlife Refuge, home to thousands of nesting seabirds, including puffins common murre and black-

legged kittiwakes. A complimentary deli lunch is included, and a full service snack bar is available for purchase.

- Tour Times: 9:30 AM - 5:00 PM Check in at Harbor 360 Hotel at 8:30AM and boarding starts at 9:00AM.
- Transfers: Yes, Passengers can walk to Harbor 360 Hotel and the hotel provides a daily shuttle to Seward Train Depot after the cruise.
- Meals: Yes, deli lunch included. A full service snack bar is available for purchase.
- Wheelchair Accessible: Yes



SEWARD

Overnight in Seward.

Day 4

Today, explore the charming port community of Seward, Alaska. The Real Alaska Tour promises authentic adventures, including a dog sled ride, lunch at an Alaska roadhouse and a tour to massive Exit Glacier. Later, depart on the Coastal Classic Train and overnight in Anchorage.

- **THE REAL ALASKA TOUR** (Available May 9 - mid-September 2022) *This tour is a great way to see the best of Seward in a day. Visit Exit Glacier, pause for lunch at Resurrection Roadhouse, and enjoy a full tour (and dog sled ride!) at the Seavey family homestead and kennel. Meet the puppies and go for a wilderness dog sled ride. Enjoy a short walk along a nature trail to Exit Glacier. During the salmon runs, see salmon swimming upstream to spawn. You can opt to wait at the Exit Glacier Visitor's Center during the walk if you prefer.*





SALMON SPAWNING

This 6-hour tour includes:

- Tour of Iditarod Champion Mitch Seavey's sled dog kennel
- Summer dog sled ride
- Lunch at a local restaurant
- Guided hike at Exit Glacier
- Salmon stream viewing
- City tour of Seward
- Tour Times: 11:30 AM-5:30 PM
- Transfers: Yes
- The Seward depot will start checking luggage for the 6:00 PM Coastal Classic Train starting at 10:30 AM.
- Meals: Yes, choice of full lunch menu at a local restaurant.
- Wheelchair Accessible: No



IDITAROD SLEDDING DOGS

RAIL: COASTAL CLASSIC

- ROUTE: Seward-Anchorage
- DEPART: 6:00 PM ARRIVE: 10:15 PM

Overnight in Anchorage

| Day 5

Journey to Denali National Park aboard the Denali Star Train. Enjoy a delicious meal and an evening of rip-roarin' entertainment at an Alaskan dinner theater. Overnight in Denali.

RAIL: DENALI STAR

- ROUTE: Anchorage-Denali
- DEPART: 8:20 AM ARRIVE: 3:40 PM

ALASKA CABIN NITE DINNER THEATER The classic Denali National Park dinner theater. Join our heroine Fannie Quigley and an unforgettable cast of characters in this true-to-life Gold Rush tale of adventure in early 1900s Alaska. It's a great mix of colorful storytelling, spirited music and humor, brought to life by talented performers. Costumed performers are also the servers at dinner, all of which is done in character. This two hour evening show is hosted in an authentic, log-paneled roadhouse, located at the Denali Park Village. Dinner is an all-you-can-eat meal served family-style, including Alaskan salmon, barbeque ribs, potatoes, corn, drop biscuits and berry cobbler.



- Transfers: Yes
- Wheelchair Accessible: Yes
- Meals: Yes, see above

Overnight in Denali hotel.

- Restaurant: Yes / Complimentary Breakfast: No
- Transfers: Yes, to and from the Denali Depot, Wilderness Access Center, National Park Visitor Center and Tesoro station in downtown Denali.
- Wheelchair Accessible: Yes

| *Day 6*

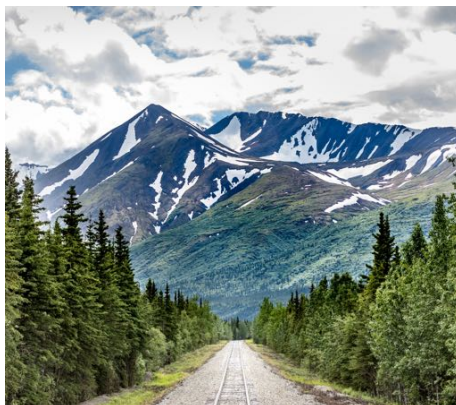
Embark on a full-day narrated bus tour along the rugged Denali Highway. Wildlife sightings are common, so keep your camera handy. Enjoy a buffet lunch before making the return journey. Overnight in Denali.



- **TUNDRA WILDERNESS TOUR** - One of the most popular tours of Denali National Park! A narrated bus tour takes you across a spectacular slice of the Alaska Range with mountain views and lots of wildlife. A classic wildlife tour of Denali National Park, the Tundra Wilderness Tour showcases Denali's spectacular scenery and many opportunities for wildlife sightings -- making this tour one of the most popular ways to experience and understand Denali's terrain and wildlife. Tour drivers, educated and trained as interpretive naturalists, provide colorful information

about the land and its animals. Animal sightings include brown and black bears, caribou, moose, Dall sheep, wolves, snowshoe hares, lynx, arctic fox, porcupines and more.

- Tour Times: Tours depart between 5:00AM and 10:50AM and last 5.5 hours.
- Your specific tour departure time will be determined approximately 48 hours prior to the tour date.
- Transfers: Yes, to and from the Denali Park Village, Grande Denali Lodge, Denali
- Bluffs, Denali Princess Lodge, McKinley Chalet and Denali Bus Depot.
- Meals: Yes. Snack box lunch and beverage
- Wheelchair Accessible: Yes, with advance notice
- Note: Alaska State Law requires children to be in a car or booster seat as follows: children younger than 1 year of age or less than 20 pounds must be in a rear-facing infant seat. Children 1 to 4 years and at least 20 pounds must be in a child restraint. Children 5 to 7 years who are less than 57 inches tall or weigh less than 65 pounds must be in a booster seat. Parents are responsible for providing the appropriate car
- seat.





DENALI

Please note: due to Denali Park Road maintenance, the 2022-2023 Tundra Wilderness Tour will travel 42 miles one way with a turnaround at the historic Murie Cabin at East Fork River; the return journey affords the opportunity to view the rugged landscape from a new angle.

Transportation is provided by modified school bus, with an expert driver guide providing narration. Rest stops and opportunities to take photos are made every 1-1.5 hours. Available May 28 – September 10, 2022

Overnight in Denali

Day 7

- The morning is at your leisure in Denali. That afternoon, return to Anchorage on the Denali Star Train. Overnight in Anchorage.



RAIL: DENALI STAR

- ROUTE: Denali-Anchorage
- DEPART: 12:30 PM ARRIVE: 8:00 PM

Overnight in Anchorage

- Restaurant: No / Complimentary Breakfast: Yes
- Transfers: Yes, to and from the Anchorage Airport and Depot, year-round 24/7.
- Wheelchair Accessible: Yes, but the shuttle is not accessible.

*ITINERARY SUBJECT TO
CHANGES AND MODIFICATIONS*

BASED ON AVAILABILITY

ONBOARD EXPERIENCE ALASKA RAIL: ADVENTURE CLASS

Experience rail travel across Alaska at our best rate. Adventure Class cars offer comfortable seating and large picture windows. Adventure Class guests are encouraged to travel between railcars, whether to take advantage of the open seating in our Vista Dome cars or visit the Wilderness Café.

Adventure Class features:

- Confirmed seat with large picture windows
- Onboard dining and bar service available for purchase in the Wilderness Café*
- Freedom to explore between Adventure Class cars
- Access to open seating in Vista Dome car (summer only; excludes Glacier Discovery Train)

ONBOARD EXPERIENCE ALASKA RAIL: GOLDSTAR SERVICE

The Alaska Railroad's premium class of service offers passengers an exceptional way to travel across Alaska. Glass-dome ceilings allow for panoramic views as Alaska unfolds along the tracks, and an outdoor, upper-level viewing platform -- the only of its kind in the world -- offers

fresh air and an excellent vantage point for photos. On the lower level of GoldStar railcars, passengers enjoy a full-service dining room; GoldStar tickets include meals, all soft beverages and two complimentary adult beverages per trip for passengers over 21.

GoldStar Service features:

- Glass-dome ceilings
- Upper-level outdoor viewing platforms
- Inclusive dining at the lower-level full-service dining car
- Private bar and two complimentary adult beverages
- Comfortable forward-facing seats
- Alaskan tour guide providing narration
- Fully accessible

PRICING UPON REQUEST. MAY VARY ACCORDING TO CHOSEN DATES, HOTEL AVAILABILITY AND CLASS OF TRAIN SERVICE (ADVENTURE OR GOLDSTAR).

FOR FURTHER INFORMATION AND BOOKINGS:

CLAIRE MAGUIRE 1-714-822-8647

CLAIRE.MAGUIRE@CRUISEPLANNERS.COM

FOR MORE BUCKET LIST EXPERIENCES: [BUCKET LIST TRAVEL TRIPS](#)



[ISLAND GIRL TRAVEL AND VACATIONS](http://www.islandgirltravel.com) 714-822-8647