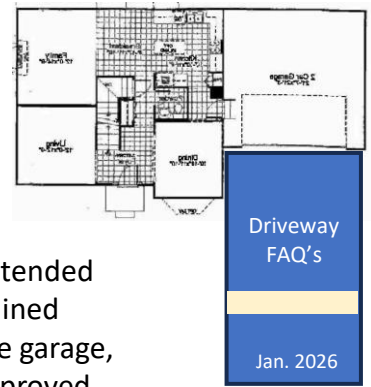


# FAQ's – Driveways

## (Frequently Asked Questions)

This FAQ clarifies driveway replacement and expansion requirements under Section 7.06 of the TECA Codes and Covenants



Under the Association's Declaration, driveways may not be altered or extended without prior written authorization of the Board. The Board has determined that driveway expansions — including widening beyond the width of the garage, extending the driveway, or paving alongside the garage — will not be approved.

Homeowners may replace an existing driveway on a like-for-like basis only, maintaining the original width and footprint of the driveway as constructed. Approved driveway replacement materials include concrete or asphalt, provided the replacement remains within the existing approved footprint.

All driveway replacements require advance submission and approval of a TECA Architectural Improvement Form, followed by any required permits/approvals by the Village of Plainfield.

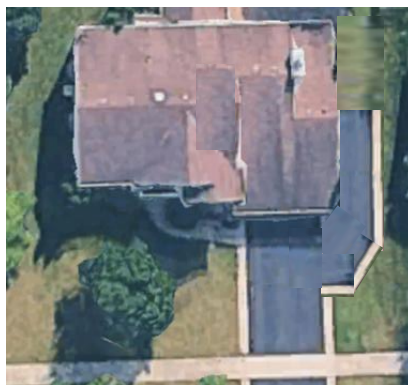
Neighbor consent does not permit driveway expansion, and such requests will be denied in order to preserve uniformity, protect property values, and avoid future ownership and enforcement issues.

Shown below are examples of compliant (acceptable) and non-compliant (violation) driveways. *(Please note these images are for illustration purposes only)*



Both driveways shown reflect **compliant** / acceptable replacement at the original width of the garage

**"Acceptable"**



Both driveways shown are **non-compliant**.

Each exceeds the width of the garage and includes paving along the side of the garage.

Both of these, the width and paving of the side yard are **violations**.