

Housing and Homelessness Resources Serving Ashe County

<p>ASHE COUNTY COALITION FOR THE HOMELESS</p>	<p>Ashe County Coalition for the Homeless</p> <p>Shelter and comprehensive services for the homeless and those at risk of homelessness including short-term assistance, safety, resource provision, and referrals.</p> <p>Web: Ashe County Coalition T: 336-846-5719 336-846-5600</p> <p>Facebook: Coalition for the Homeless</p> <p>West Jefferson NC</p>
	<p>Ashe County DSS – Housing Assistance</p> <p>DSS's Family Support Services unit offers assistance for those that are homeless or are at risk of homelessness, providing referrals, transportation, assistance with HUD applications, and ensuring basic needs are met while working to obtain safe, stable housing.</p> <p>E: dssinfo@ashecountygov.com T: 336-846-5719</p> <p>Web: Ashe County DSS Facebook: Ashe DSS</p> <p>150 Government Circle, Jefferson NC</p>
	<p>Ashe County Habitat for Humanity</p> <p>Works in partnership with the people of Ashe County to eliminate substandard housing by building safe, affordable, decent housing with families in need.</p> <p>E: info@ashehabitat.org T: 336-846-2525</p> <p>Web: Ashe Habitat - Home Facebook: Habitat for Humanity</p> <p>West Jefferson NC</p>
	<p>Ashe Family Care Homes</p> <p>A licensed Retirement and Assisted Living Family Care Home.</p> <p>E: debbie21869@gmail.com T: 336-877-5513</p> <p>Facebook: Ashe Family Care</p> <p>523 Milt Houck Road, Todd NC</p>



Community Alternatives North Carolina

Services to individuals who need assistance with daily living due to developmental, cognitive, or intellectual disabilities, and dual diagnoses. Home & community-based services, adult foster care host home, care management, periodic & supported living services, and supported employment & job placement.

Web: [Community Alternatives](#) T: 828-575-9802

170 Hidden Shadows Drive, Boone NC



Easterseals UCP of NC and VA

Helping individuals with disabilities and mental health challenges with Alternative Family Living, Group Homes, Supervised Apartments, and Transitioning to Independent Living.

E: housing@eastersealsucp.com T: 800-662-7119

Web: [Residential Services](#) Facebook: [Easterseals UCP](#)

Serving Ashe County, NC



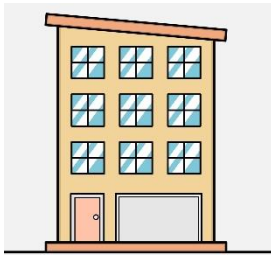
Generations Ashe Senior Village

Attractive and affordable housing for low-income individuals age 62+.

E: info@generationsashe.org T: 336-246-9791

Web: [Generations Ashe](#) Facebook: [Generations Ashe](#)

180 Chatty Rob Lane, West Jefferson NC



High Vista Apartments

Low-income, affordable housing. Handicapped accessible units are available.

T: 336-246-3460

307 High Vista Drive, West Jefferson NC



Hope Thru A Vision

Providing temporary shelter to the homeless.

E: hopethruavision@gmail.com T: 336-977-4462

Web: hopethruavision Facebook: [Hope Thru A Vision](https://www.facebook.com/HopeThruAVision)

Serving Ashe County, NC



Hospitality House of Northwest NC

Programs include Emergency Housing, Night-by-Night Shelter, Family Housing, Domestic Violence Transitional Housing, Permanent Supportive Housing, Scattered Site Housing, Homeless Prevention & Diversion, and Rapid Rehousing.

E: info@hosphouse.org T: 828-264-1237

Web: [Housing Programs](http://HousingPrograms) Facebook: [Hospitality](https://www.facebook.com/Hospitality)

338 Brook Hollow Road, Boone NC



Jefferson View Apartments

Affordable apartment homes for low-income individuals.

E: jeffersonview@epmsites.com T: 336-846-1333

Web: [Jefferson View](http://JeffersonView)

115 Jefferson View Lane, Jefferson NC



Mountain Village Apartments

Subsidized independent housing for elderly and/or disabled adults based on income.

E: mvillage12@embarqmail.com T: 336-246-9040

Web: [Mountain Village Apartments](http://MountainVillageApartments)

200 Luther Road, Jefferson NC



Northwestern Regional Housing Authority

Manages **Historic Ashe Hospital** which provides affordable housing for the elderly and disabled.

Manages **Oak Grove Village** which provides affordable family and large family housing.

Both locations provide Section 8 voucher assistance.

E: info@nwrha.com

T: 336-846-3444 | 336-846-8877

Web: [Northwestern Regional Housing Authority](http://NorthwesternRegionalHousingAuthority.org)

Historic Ashe Hospital-410 McConnell Street, Jefferson NC

Oak Grove Village-401 Oak Grove Circle, Jefferson NC



RHA Health Services

Supervised living for adults with intellectual and developmental disabilities.

T: 828-262-5450

Web: [RHA Health Services](http://RHAHealthServices.org)

Facebook: [RHA Health](https://www.facebook.com/RHAHealth)

176 Wildcat Road, Deep Gap NC



Spruce Hill Apartments

Affordable apartment living for the elderly, ages 62+ with HUD Section 8 assistance available.

Web: [Spruce Hills](http://SpruceHills.org)

T: 336-246-9163

400 Locust Street, West Jefferson NC

SUMMIT SUPPORT SERVICES OF ASHE, INC.

Summit Support Services of Ashe

Provides Group Living and Supported Community Living.

T: 336-846-4491

Web: [SUMMIT SUPPORT](http://SummitSupport.org)

Facebook: [Summit Support](https://www.facebook.com/SummitSupport)

514 McConnell Street, Jefferson NC



USDA Rural Development Office

Offering single family and multifamily housing programs to include direct or guaranteed loans, home repair loans & grants, disaster repair grants, on- and off-farm loans, multifamily preservation & revitalization, and multifamily housing rental assistance.

E: pam.hysong@nc.usda.gov T: 336-246-2885 x103 or x107

Web: [Rural Development](#) Facebook: [USDA](#)

134 Law Enforcement Dr., Jefferson NC



Valley View Apartments

Affordable apartment living, accepting housing vouchers.

T: 336-846-7377

510 Martin Street, Jefferson NC



West View Terrace Apartments

Income-based housing.

E: info@partnershippm.com T: 336-246-4757

Web: [Westview Terrace](#)

305 East 4th Street, West Jefferson NC