

Company Profile



Website : anshenterprisessolar.com

- GST NO :- 07DJEPS9697M2ZY

**Contact :- +91 9971008143
+91 8743995911**

**Head Office :- Plot No Kh No-16/2, Ph-1, E-Blk , Qutub Vihar,
New Delhi, South West Delhi, Delhi, 110071**

Ansh Enterprises (EPC Solar Work)

- ***Mandeep Kumar Singh***
- ***Qualification – Graduate***
- ***Contact - +91 9971008143***

SOLAR EXPERT

- ***Shailesh Chaudhary***
- ***Qualification - B.TECH, MECHANICAL ENGINEERING***
- ***Contact - +91 8743995911***

About : Ansh Enterprises (EPC solar work)

- *Ansh Enterprises delivers a wide spectrum of services profiled as Lighting Source for Domestic, Industrial and Commercial application from full automation to top-class tech innovation. The Company further leverages module efficiency and reliability to fetch distinguished customer esteem.*

Deals in the following listed domains:

Solar Installations

Repair & Upgradation

Annual Maintenance Contracts

- **Solar Power Plants**
- *We started in the year 2021, are wholesaling and trading a wide array of Solar Plant for a user-friendly installation, sturdy design and longer service life.*
- *Our Moto is to bring the best class Lighting Source for Domestic, Industrial and Commercial application.*
- *We encourage the culture of safety and safe work practices.*
- *We are genuinely Client focused and continually seeking improvements in our services. We are determined to succeed and derive inspiration from challenges. Our philosophy is provision of value adding solutions and their timely and cost effective services.*
- *Ansh Enterprises provides professional service and advice. All our employees are proficiently trained and hold several years of experience. We are always available for all your queries and requests.*
- *To receive a quote, further information or advice, invites you to contact OUR Head Office :- Plot No Kh No-16/2, Ph-1, E-Blk , Qutub Vihar, New Delhi, South West Delhi, Delhi, 110071*

Ansh Enterprises Work

5 Kwp On-Grid Plant At Shyam Vihar Najfgarh Delhi



5 Kwp On-Grid Plant At Dwarka Goyala Dairy More Delhi



7 Kwp On-Grid Plant At The Mom'S Lap Pree School Near Dwarka



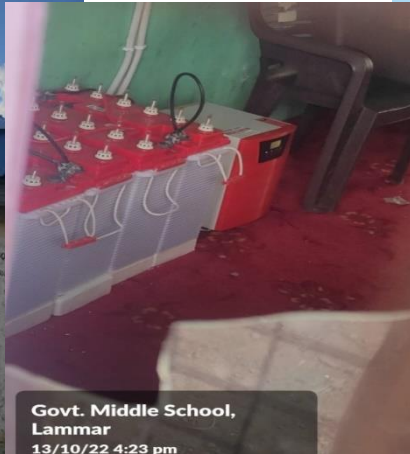
12 Kwp On-Grid Plant At Chandni Chowk MCD Community Centre



Ansh Enterprises Structure Work



**Ansh Enterprises & Aishpr green with joint venture
work Success completion 35 primary school At Solar
plant at Kargil(Ladakh UT)**



Thank You !