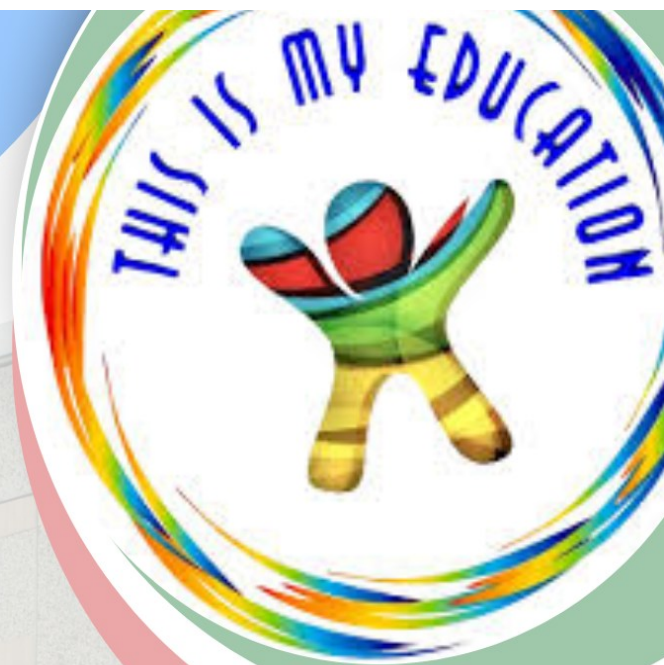


Pre 16 at TIME



Welcome to This Is My Education

OUR MISSION

At TIME, we firmly believe that every individual, regardless of their circumstances, has the potential to make progress towards their goals and aspirations.

We are dedicated to creating a safe and positive learning environment where all our students can grow and thrive.

OUR VISION

At TIME, our vision is to ensure our learners are empowered young people ready to face life in modern Britain.

We envision each learner being the best version of themselves, reaching their full potential in all aspects of life: academically, personally, socially and physically.

Ensuring our learners have the skills and knowledge needed to lead fulfilling lives.

OUR VALUES

Ambitious, Accountable, Respectful & Kind



Visit Our Website

www.thisismyeducation.org.uk



OUR VALUES



At TIME we take pride in providing education that transforms lives. We believe everyone who enters our doors has the potential to achieve their fullest. Each individual will leave more empowered, creative, and academically prepared to make their mark in the world.

AIM & DELIVERY

Starting at TIME, every student will be provided with a personalised education programme that is designed to cater to their specific requirements. These programmes are delivered by a dedicated team of staff to ensure comprehensive support.

The school has structured the day in a way that allows for both individual and group work, promoting the development of academic, personal and social skills.

The school also makes use of the resources in the local environment and organises educational programmes that take students out into the community for practical activities, animal care study and interaction with people in the community. This also includes library visits and country walks to enrich their learning experiences.

Who we support

Many of the students have one or more of the following:

- Primary diagnosis of autism
- Social, emotional and mental health (SEMH)
- Complex needs
- Attention Deficit Hyperactivity Disorder (ADHD)
- Attachment disorder
- Behaviours of Concern
- Difficulties with Dyslexia or Dyspraxia
- History of educational placement breakdown
- An Education Health & Care Plan (EHCP)

At TIME we believe that a holistic approach is key

At TIME we place a high value on developing strong relationships with families.

We believe that working in partnership with parents and guardians is crucial in providing the best possible support to our students.

Our aim is to establish trust and build a strong rapport with families to effectively address any challenges and offer support in a respectful manner.

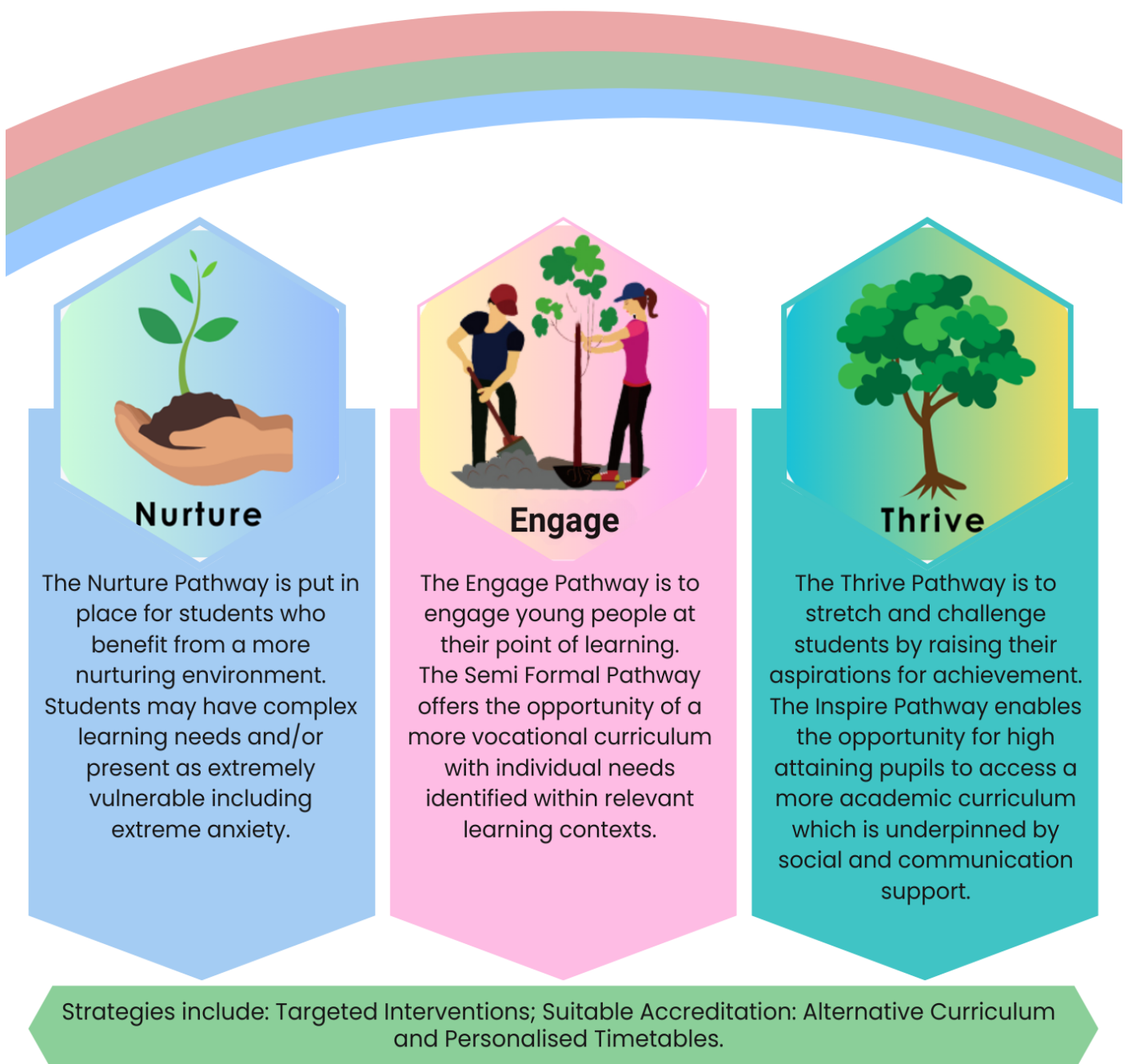


At our school, we believe that education extends beyond the traditional emphasis on English and Maths. We understand that effective communication, independence, knowledge, and practical skills are essential elements of a well-rounded education, and we ensure these are woven into our lessons.

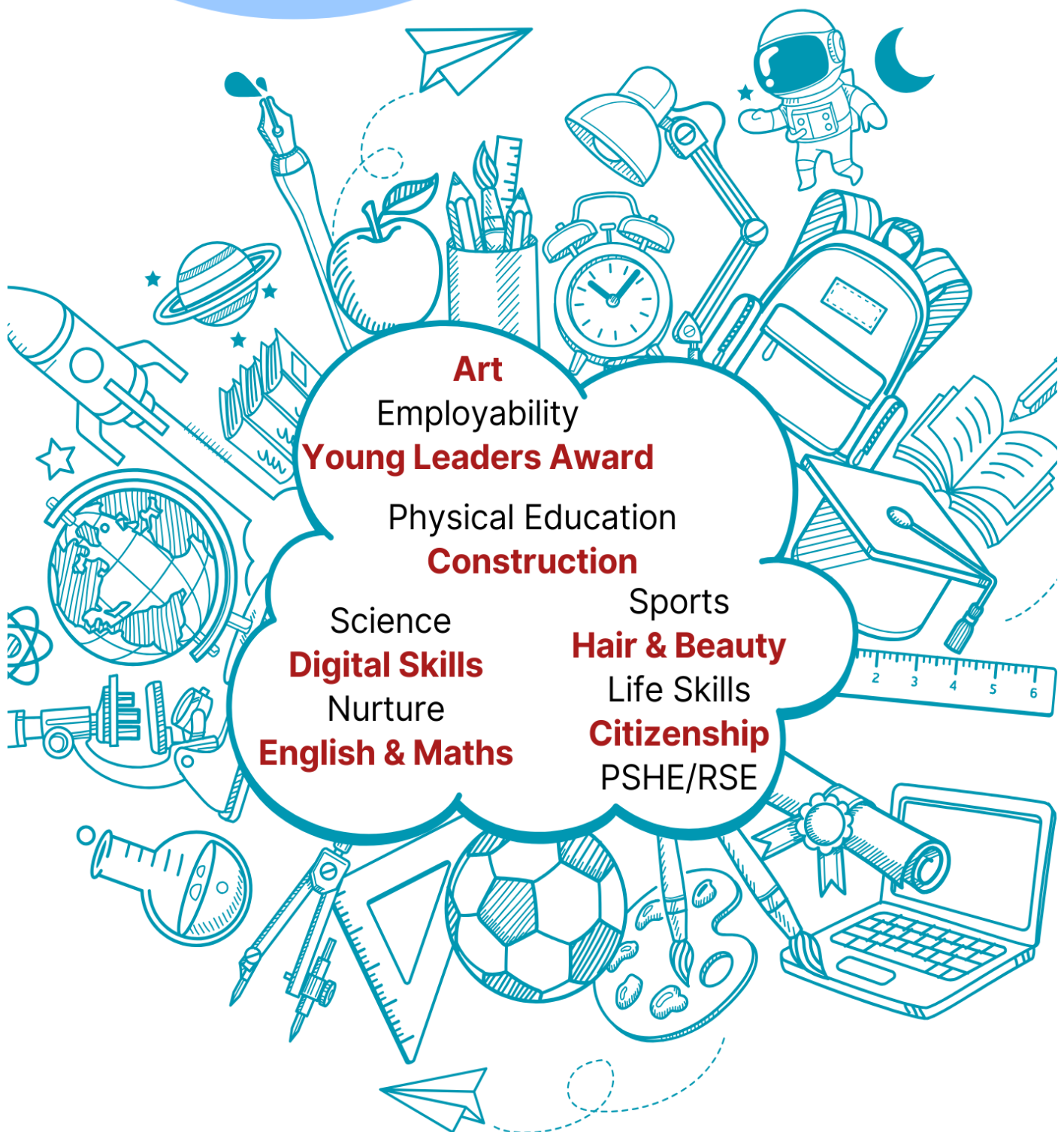
We also strongly believe that for learning to be truly effective, every experience our students have with us, each day, should be meaningful and valuable

Which pathway will you take?

At This is My Education we build our curriculum around you. We have 3 pathways you can choose to take, however you can access different parts of each route if you wish to do so. Our aim is to get you to where you want to be and become the best version of yourself!



Curriculum



Accessible Curriculum

- Full individual learning plan for each student
- Small class groups
- Sensory room
- External partnerships
- Recognised qualifications achieved
- Structured timetables
- Key workers for all students
- Student centred
- Highly trained staff
- Therapeutic support
- Nurturing environment
- On-site vocational opportunities

Recognised Qualifications including:

- GCSEs in Maths & English
- Science Entry 3 - Level 2
- Functional Skills Entry 1 - Level 2
- Digital Skills Entry 3 - Level 1
- AQA Unit Awards
- Skills for Further Learning & Employment Qualifications Entry Level - Level 1 including:
 - Hair & Beauty
 - Construction
 - Sports
- Employability - Independent Living Qualifications Entry 3 - Level 2

MEETING STUDENTS NEEDS

We have strong links and work closely with external agencies including speech and language therapists, physiotherapists, educational psychologists, sports coaches, cognitive behaviour therapy (CBT) and personal centred counsellors, Connexions, social care and many other agencies.

BEHAVIOUR SUPPORT

Behaviour and safety at TIME is outstanding. We have our own approach to behaviour support which is highly effective in enabling students to remain engaged with their learning. This is in partnership with families and in connection with a range of other support services such as social care, CAMHs, educational psychology and family support.



The Archbishops' Young Leaders Award



VISION

the Archbishops' Young Leaders Award is a fully resourced leadership and character education programme designed to both enhance and form part of the Pre 16 curriculum. It offers an exciting opportunity for our young people to:

- Engage in new learning experiences
- Grow in leadership, character and key life skills
- Discover the benefits of helping others

ACTION

As part of the Awards students are empowered to 'Be the change you want to see', taking action and serving others in the community through different challenges. Students will:

- Take part individually in the projects in the community
- Be involved in team projects in the Pre 16 community
- Through outreach into the wider community on a local, national or global scale.

LEARNING

All teaching materials and resources are provided to allow students to:

- Explore and identify their leadership skills, character virtues and the importance of serving others
- Investigate the stories and impact of great leaders in society
- Examine the role they can play to bring unity to their communities, supporting and looking after the most vulnerable
- Develop the skills required to lead others and work effectively in a team.



Key Worker

What is a key worker?

Your key worker is a member of staff selected within the first 6 weeks of you being with us. This is the person you naturally gravitate towards and feel comfortable with. For your initial first weeks our senior mental health lead will act as your key worker until you are ready to transition.



What help can they give me?

Your key worker will act as your mentor, you will complete a minimum of 1 session per week which is scheduled into your time table, here you will set goals and check in to see how the week has gone. You may wish to talk through areas you loved or areas where you feel you need further support. Your key worker can support you through breaks and dinners if you feel particularly anxious during this time of the day.

Meet the Team



Jillian Fairclough
Headteacher



Kerrie, SENCO
& Mental Health Lead



Anna
Head of Maths



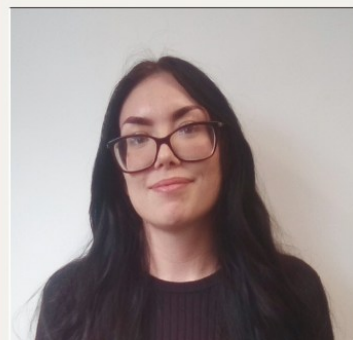
Phil
Tutor/DSL



Megan
Head of English



Steph
Teaching Assistant



Aimee
Tutor



Donya - Community Projects
Life Skills Tutor

DO YOU WANT TO KNOW MORE?

If you would like to visit to find out more about our offer please ring
01744 808040
and we will be delighted to arrange it.

Address:
TIME
Logic House
Central Street
St Helens
WA10 1UD

Email: jillianfairclough@thisismyeducation.org.uk

Tel: 01744 808040

Website: thisismyeducation.org.uk