

GB

CARBOYACHT



CARBO 90  
CATALOG



## ABOUT US

As **CARBO YACHT**, with our experience in the aluminum industry for more than 40 years, our goal is to make your dreams come true by providing this opportunity to those who make life at sea a passion and who want to experience pleasure and peace at the same time with comfort.

The aluminum material used in all of our projects provides strength, safety and longevity in our boats.

"CARBO YACHT, A DREAM REACHABLE"

[www.carboyacht.com](http://www.carboyacht.com)



## WHY ALUMINIUM?

**LIGHTWEIGHT:** Aluminum, which is 3 times lighter than steel, provides a great advantage in the weight of boats. This means better performance, higher speed and fuel economy. At the same time, the boat's light weight provides more load capacity.

**STRENGTH AND SAFETY:** Despite its light weight, aluminum strength is equivalent to steel with its highly ductile structure. Unlike other materials, the risk of puncture is less and this feature makes aluminum boats safer in case of emergency.

**LONG LASTING AND LOW MAINTENANCE COSTS:** Aluminum reacts with oxygen under normal atmospheric conditions and forms a natural protective film layer on its surface. Aluminum is very resistant to corrosion in salt water. Since it is an easily processed material, it is also easy to maintain and repair..



# MASTERY



# EXPERIENCE



# SERVICE

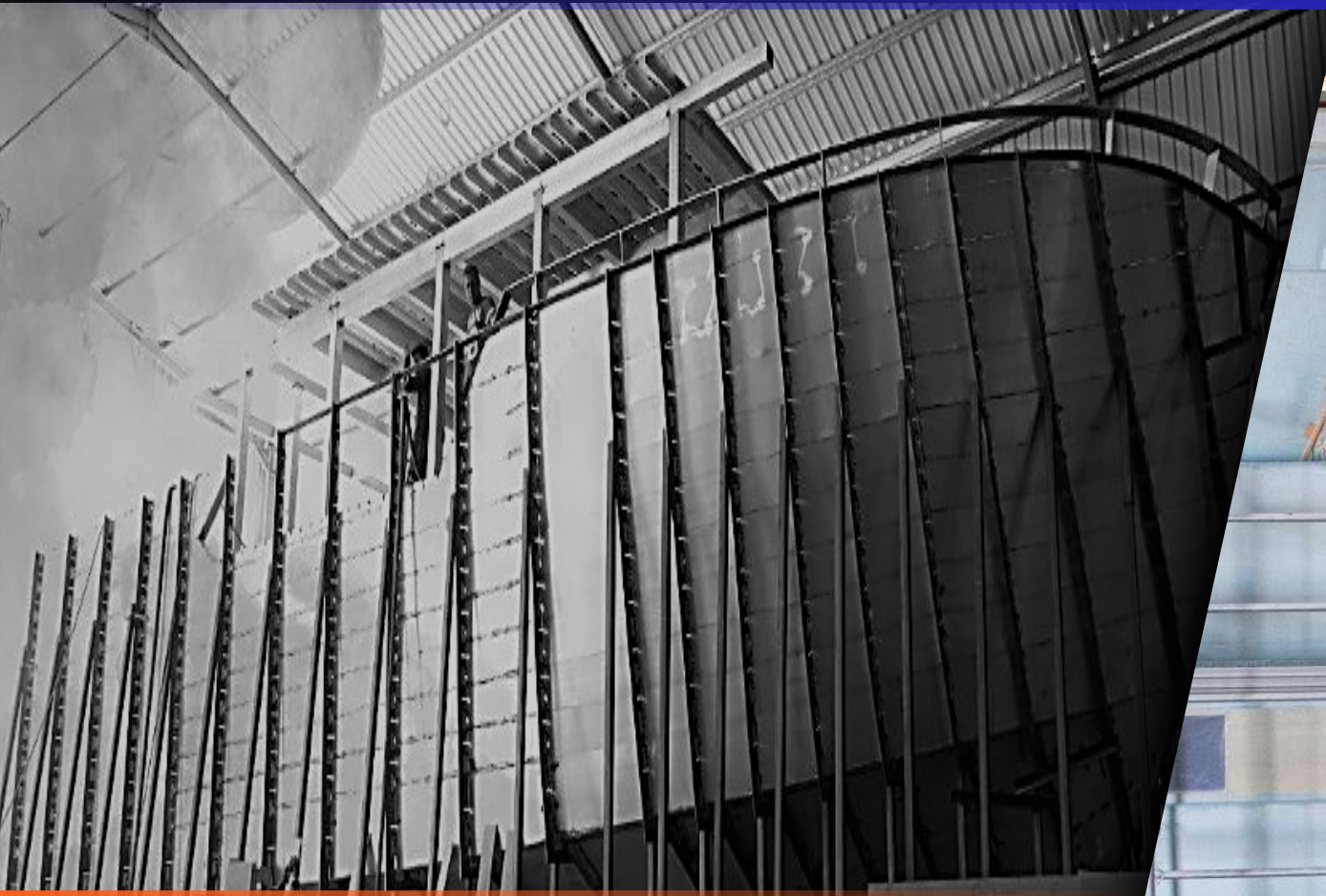


# QUALITY





# PROJECTION



# PRODUCTION





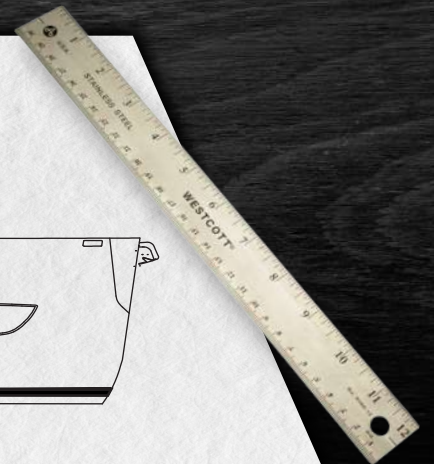
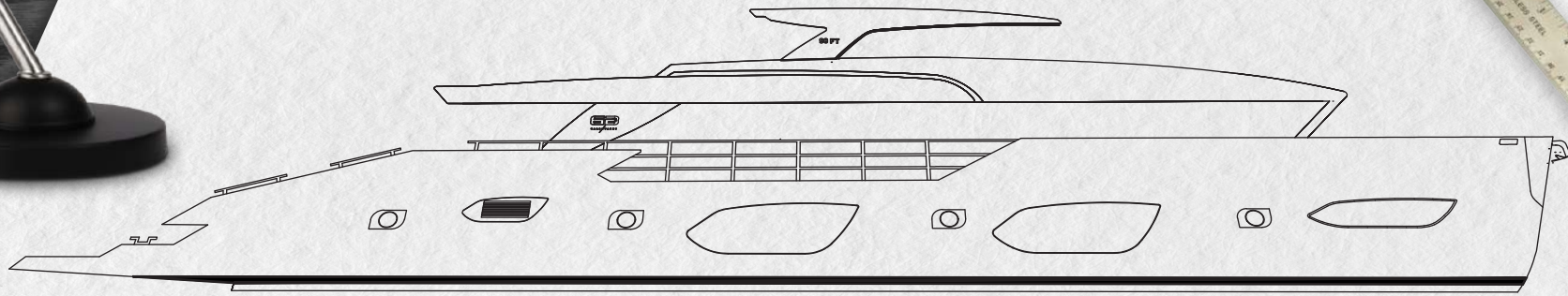
# AESTHETIC



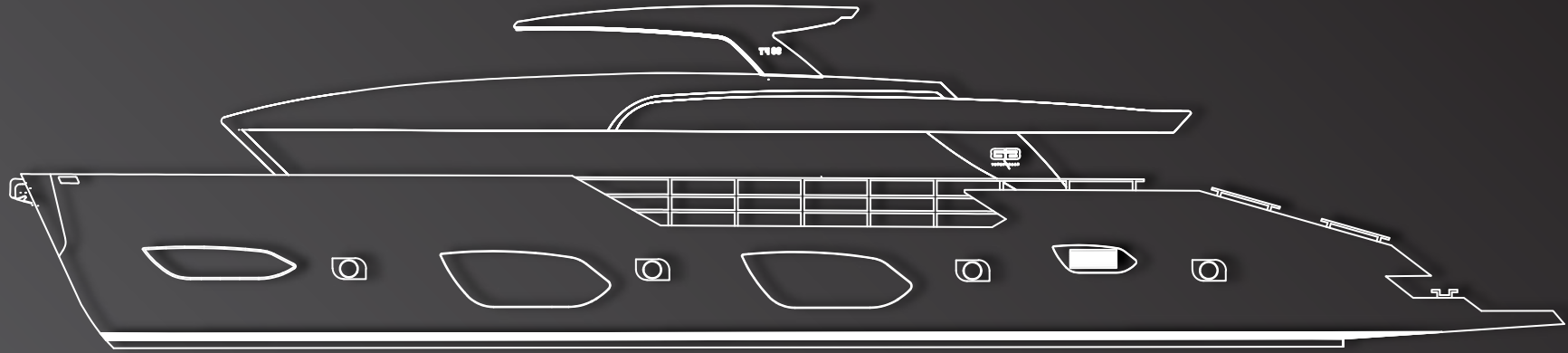
# INNOVATION

# CARBOYACHT 90FT

Where the difference is designed and  
meets elegance 90FT

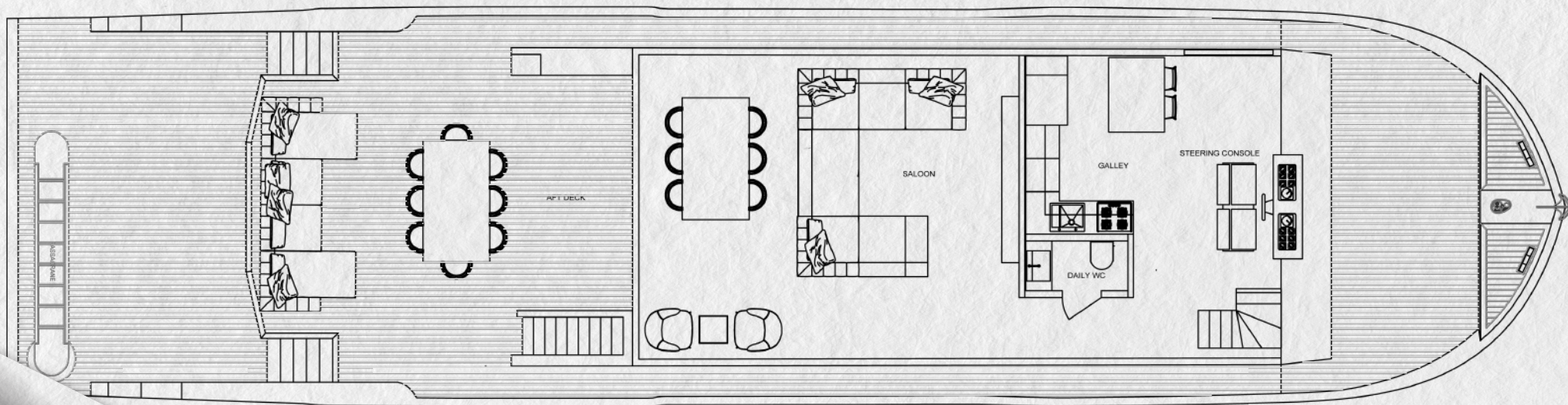






Functional and wide spaces  
where art and craft meet.





Main Deck Layout

## GENERAL FEATURES TRAWLER 90FT

**Manufacturer:** CARBO YACHT YATÇILIK A.Ş.

**Product Description:** MOTOR YACHT

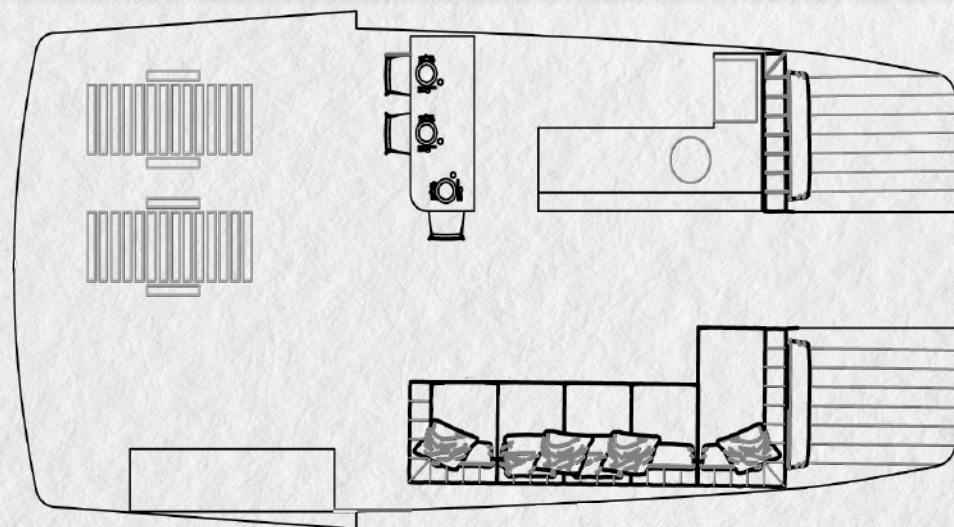
**Type:** TRAWLER

**Design category:** C – INSHORE

**Module:** B

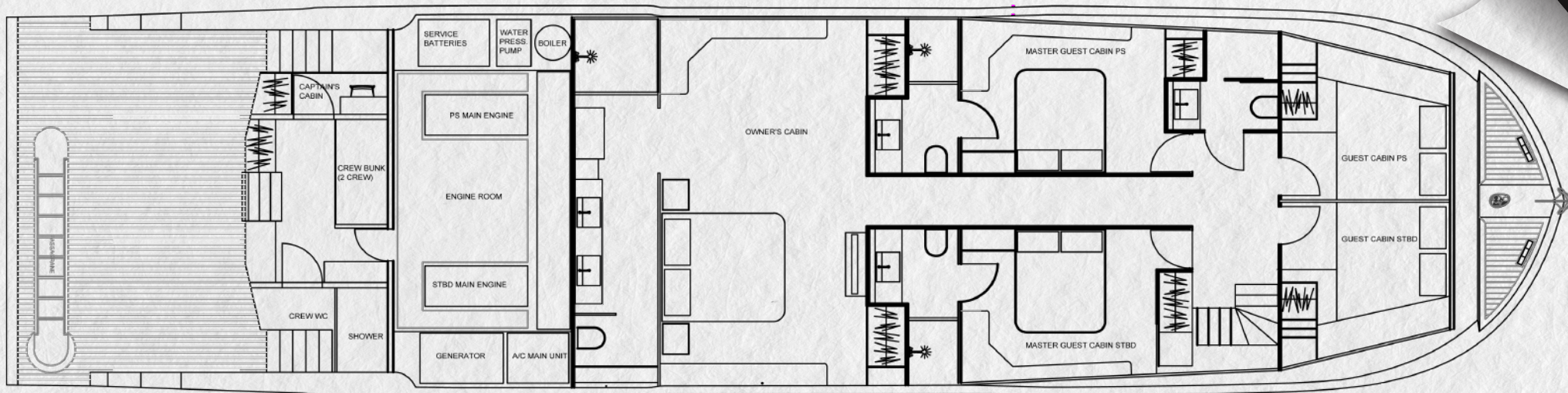
**Carrying capacity:** 12 people

**Maximum load:** 2585 kg



Flybridge Deck Layout





Lower Deck Layout

## MEASUREMENTS

**Full Length:** 28 meters

**Hull Length:** 24 meters

**Waterline Length:** 22.25 meters

**WIDTH:** 7.25 meters

**Maximum Draft:** 1.00 meter

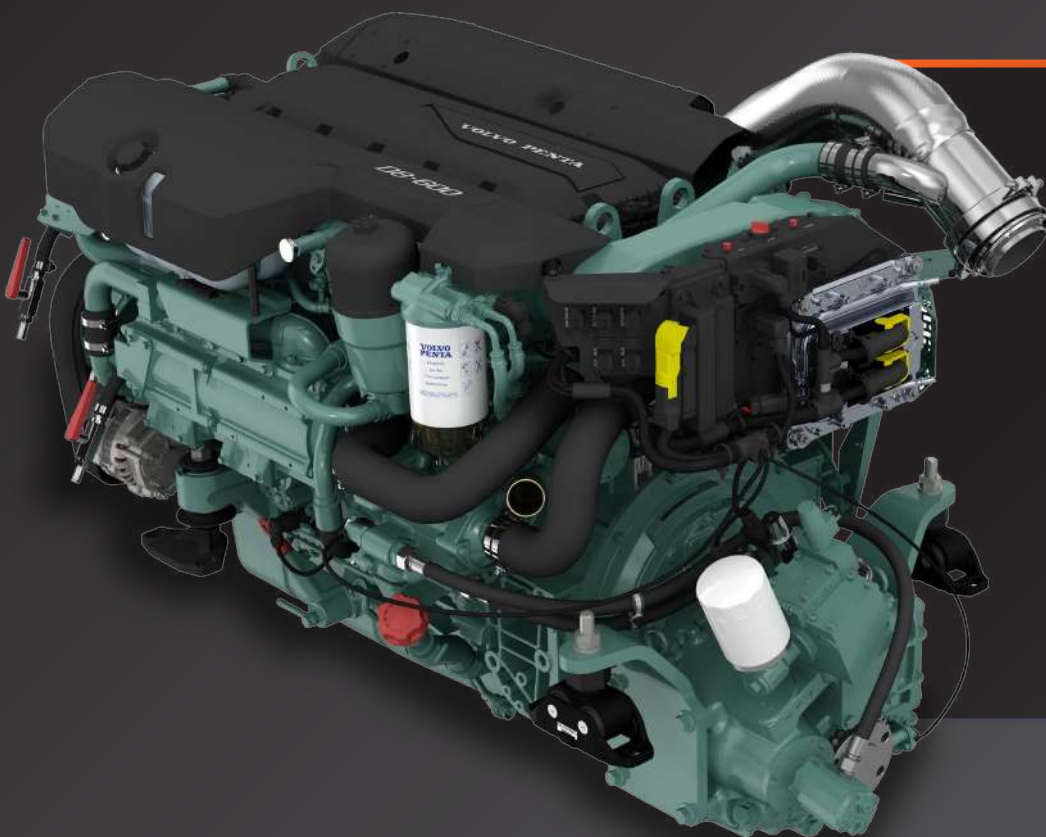
**Displacement:** 55.00 tons

**Boat Material:** Aluminum H111 5000 series, 5083 series.





# VOLVO PENTA



## D8-550

### MAIN MACHINES

**Brand:** VOLVO PENTA

**Model:** 2 x D8 550

**Fuel type:** DIESEL

*Hydraulic steering system, 550hp/2900 rpm, ZF286A Gearbox 2.208:1, Hot water connection, EVC kit main station and second station, Electric throttle, B7XSV 7" glass cockpit display, MFD8612 12" multifunction display, EVC system indicator 2.5"*

**Maximum speed:** 13,5 knots

**Cruising speed:** 10,5 knots





## TECHNICAL DATA

**Engine designation:** D8-550

**Configuration and no. of cylinders:** in-line 6

**Method of operation:** 4-stroke, direct-injected, turbocharged diesel engine with aftercooler

**Bore/stroke, mm (in.):** 110/135 (4.33/5.31)

**Displacement, l (in<sup>3</sup>):** 7.7 (469.7)

**Compression ratio:** 16.5:1

**Dry weight bobtail, kg (lb):** 840 (1852)

**Crankshaft power, kW (hp) @ 2900rpm** 405 (550)

**Max. torque, Nm (lbf.ft) @ 1700 rpm** 1665 (1228)

**Emission compliance:** IMO NOx, EU RCD Stage II, US EPA Tier 3

**Rating:** R5

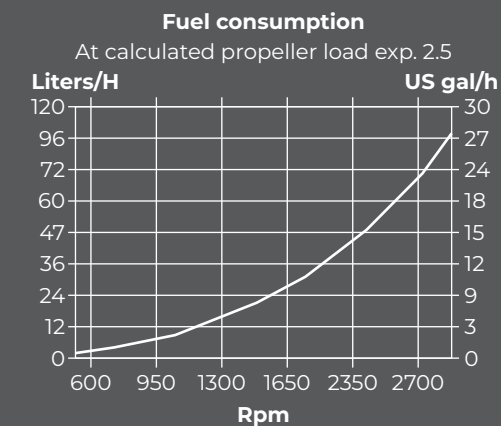
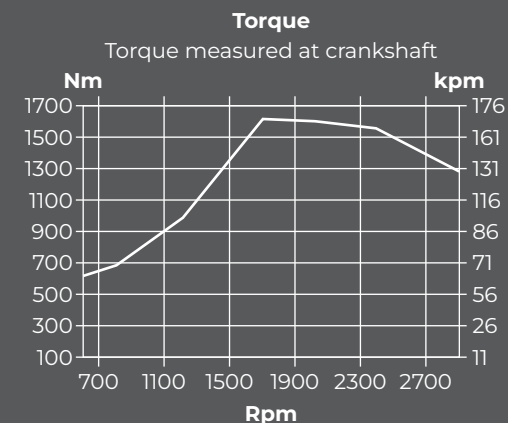
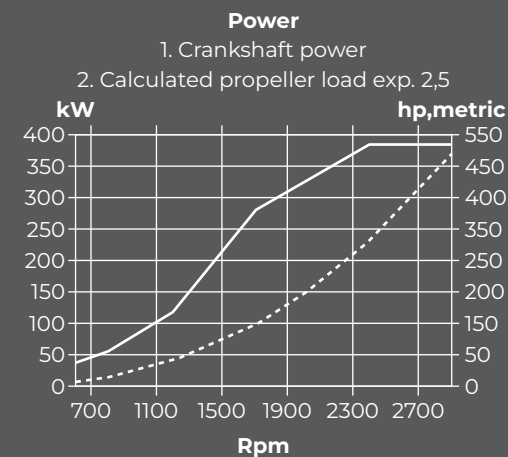
**Recommended fuel to conform to** ASTM-D975 1-D & 2-D, EN 590 or JIS KK 2204

**Specific fuel consumption, g/kWh (lb/hph) @ 2400 rpm** 205 (0.332)

**Flywheel housing/SAE size** 11.5"/SAE 2

*Technical data according to ISO 8665. With fuel having an LHV of 42700 kJ/kg and density of 840 g/liter at 15°C (60°F).*

*Merchant fuel may differ from this specification which will influence engine power output and fuel consumption.*



## TECHNICAL DESCRIPTION

### Engine and block

- Cylinder block made of cast iron
- One-piece cast-iron cylinder head
- Ladder frame fitted to engine block
- Replaceable dry cylinder liners and valve seats/guides
- Drop forged crankshaft with induction hardened bearing surfaces and fillets with seven main bearings
- Four-valve-per-cylinder layout with overhead camshaft.
- Each cylinder features cross-flow inlet and exhaust ducts
- Gallery oil-cooled cast aluminum alloy pistons with three piston rings
- Rear-end transmission

### Engine mounting

- Flexible engine mounting (option)

### Lubrication system

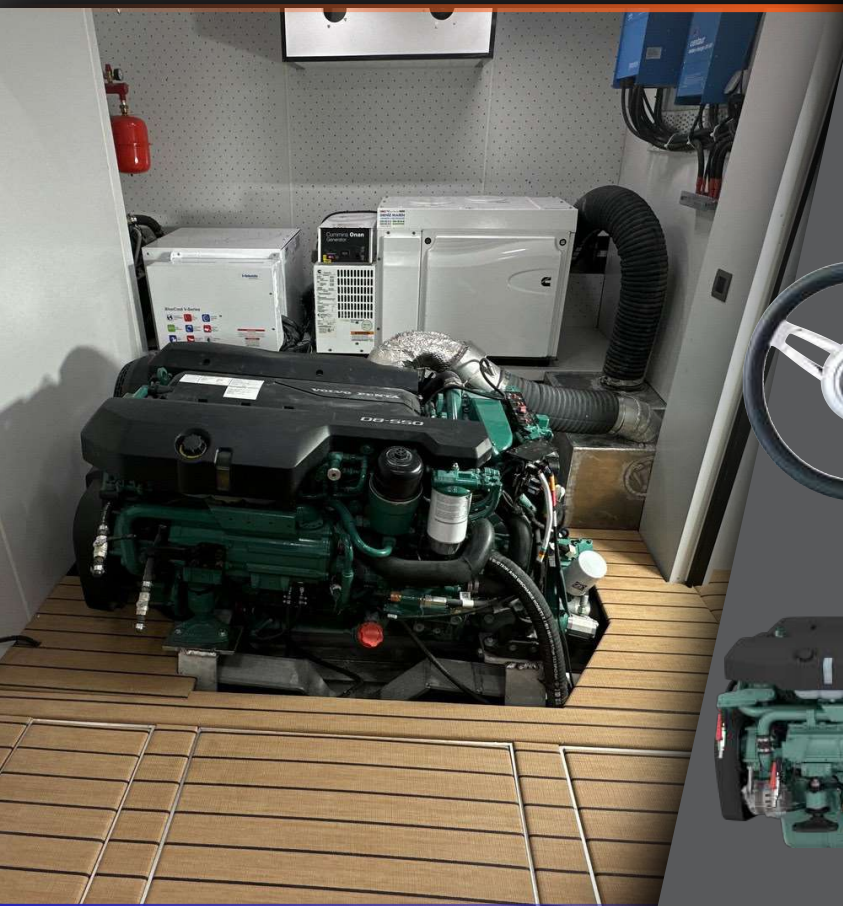
- Seawater-cooled tubular oil cooler
- Single cartridge type oil filter, easy to replace, with no spillage

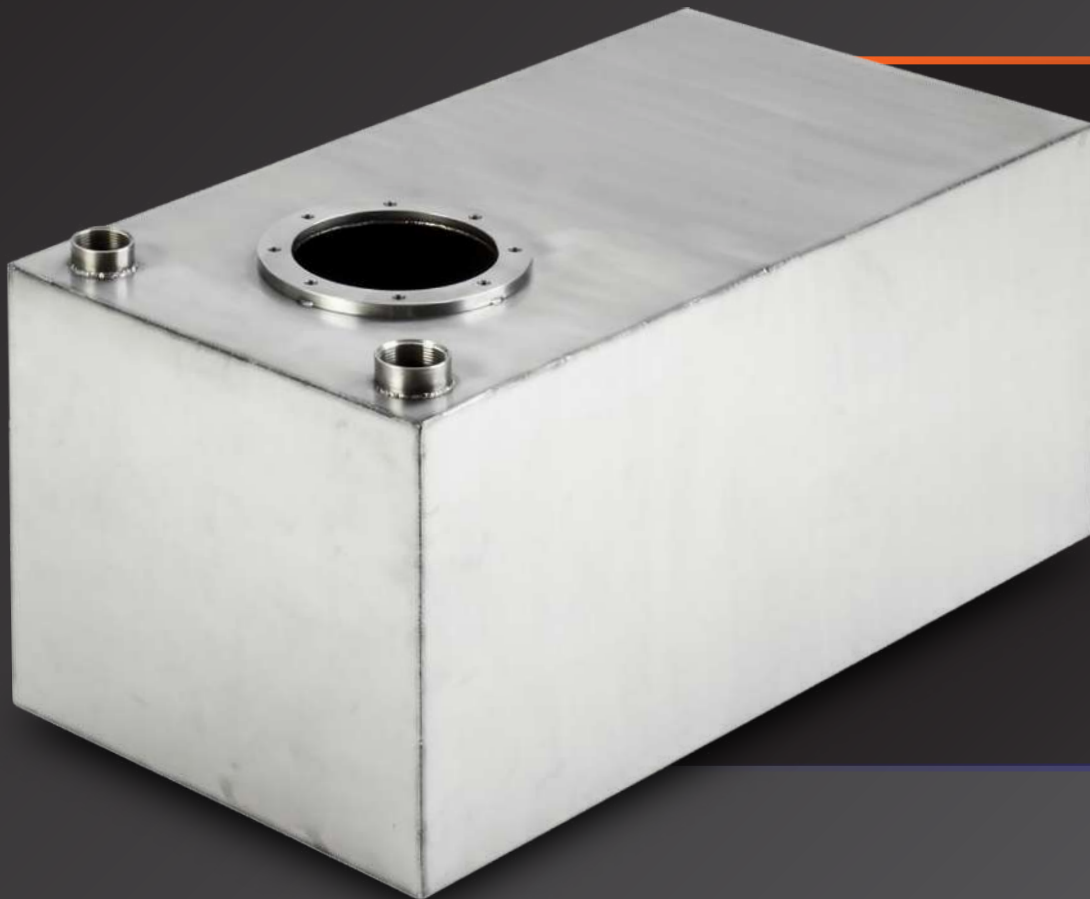
### Fuel system

- Common rail fuel injection system
- Gear-driven fuel pump and injection timing
- Electronically controlled central processing system (EMS – Engine Management System)
- Single fine fuel filter of spin-on type, with water separator and water alarm



# D8-550





## TANKS

**Fuel tank:** 1 x 3400 litres

**Fresh water tank:** 2 x 500 litres

**Wastewater tank:** 1 x 1000 litres

**Toilet tank:** 1 x 750 litres

*The tanks are made of aluminum and pressure tested. The surfaces of the tanks are painted with epoxy paint.*

*The fuel tank has a manual and electric level gauge, and the fuel level can be monitored from a manual indicator and the GARMIN screen.*





## LAYOUT

**Number of cabins:** 5

*1 aft master cabin, 2 master guest cabins, 2 guest cabins*

**Number of beds:** 5 double beds

**Number of bathrooms:** 4

*Aft master cabin has double sinks, 2 master guest cabins share a bathroom.*

*There is a crew cabin for 2 people at the stern of the boat, which can optionally be for 3 people. The engine room can be accessed from the crew cabin. The crew cabin also has a separate toilet and bathroom.*



C A R B O 90



## ELECTRONICS

**Navigation center:** GARMIN B7XSV 7" glass cockpit screen, MFD8612 12" multifunction screen, EVC system indicator 2.5

2 VOLVO PENTA electric throttle, Hydraulic steering pump and steering wheel, Autopilot

**Depth, water temp and speed:** GARMIN TRANSDUCER NMEA 2000

**Chartplotter:** GARMIN

**Autopilot:** GARMIN

**GPS** GARMIN

**VHF** GARMIN VHF115i

  
**GARMIN**



## TELEVISIONS and WHITE GOODS

The aft master cabin is equipped with a 55-inch SAMSUNG 55Q80T screen.

The livingroom has a 65-inch SAMSUNG 65Q80T screen.

The guest cabins are equipped with 32-inch SAMSUNG 32T5300 screens.

In total, there are 4 SAMSUNG brand televisions on board.

Wireless infrastructure is prepared for internet access.

REFRIGERATOR SAMSUNG Wardrobe type, with ice maker

WASHING MACHINE SAMSUNG

DISHWASHER SAMSUNG

GAS STOVE, OVEN, ASPIRATOR SAMSUNG (Special compartment outside for gas cylinder)



**SAMSUNG**

**BILGE PUMP**

WHALE SUPERB 1100 • 2 PCS



**BILGE PUMP**

WHALE ORKA 1300 • 6 PCS



**SEWAGE PUMP**

WHALE GULPER 320 • 1 PCS



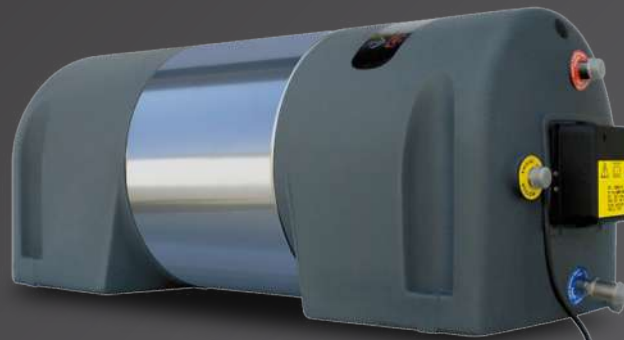
**TOILET PUMP**

WHALE GULPER WC PUMP • 1 PCS



**BOILER**

SIGMAR 60 LITRES • 1 PCS



**SHOWER PUMPS**

SPECIAL MADE  
TABSCO VACUUM PUMP • 4 PCS





**wilo****SEAMAR****Quick****Webasto****TECMA****WATER PRESSURE TANK/PUMP**

WILO AQUA SPS 50-5.56 • 1 PCS

**WINDLASS**

QUICK DUKE WITHOUT DRUM 12-13mm • 1 PCS

24v / 3500 WATT

*Control and handheld remote control from the main control panel.***FRESHWATER MAKER**

SEAMAR, 150 LITRES • 1 PCS

**AIR CONDITIONING SYSTEM**

WEBASTO, CENTRAL SYSTEM

77000 BTU MAIN UNIT

LIVINGROOM: 2 x 24000 BTU + 1 x 18000 BTU

AFT MASTER: 2 x 12000 BTU

GUEST CABINS: 1 x 9000 BTU (2 CABINS)

FRONT CABINS: 1 x 6000 BTU (2 CABINS)

**BOW THRUSTER** QUICK 24V / 10 kW • 1 PCS**STERN THRUSTER** QUICK 24V / 10 kW • 1 PCS*Dual joystick control pannel***TOILETS**

TECMA SILENCE PLUS TOUCH CONTROL • 5 PCS



## ELECTRONIC EQUIPMENT and INSTALLATION

Generator: ONAN, 17 kW MARINE GENERATOR

Inverter: VICTRON ENERGY, MULTI PLUS 5000 WATT / 120 AMP

Rectifier: CENTAUR 24/60, BLUE SMART 12/20

Main panel: MERLIN GERIN, TRANSPARENT DOOR MAIN PANEL

Cables: MARINE TYPE, tinned MYY cable

Fuses: SCHNEIDER

Epoxy painted cable channels

Schneider brand contactors

DUAL SHORE supply (separate for boat and air conditioning)

MARINCO 63 AMP 2 SETS

Wireless infrastructure preparation for internet ACCESS POINT

LED floor lighting for side decks, stairs, aft pool, platform, and flybridge

24V/220V Power supply in each cabin

8 service batteries

4 engine batteries

2 winch batteries

1 generator battery

TECMA electric, touch screen toilets

Aluminum suitable cleat system for the boat

BTICINO illuminated sockets and switches LIVING LIGHT AIR SERIES







## WATER INSTALLATION AIR CONDITIONING INSTALLATION

### TANKS

- Two 500-liter fresh water tanks provide fresh water to the boat system with one WILO brand hydrophore.
- The Sea Recovery brand 150 liter/hour fresh water generator converts seawater into fresh water and transfers it to the fresh water tanks.
- The boat's hot water is provided by the SIGMAR brand 60 liter water heater, which is included in the fresh water system.
- The fresh water system lines are completed with KALDE brand fittings and hoses, and all valves and connections are made with marine type equipment.
- Waste water, referred to as "black water," is transferred to one 1000-liter capacity tank through custom-made shower pumps and then transferred with vacuum JABSCO brand pumps located in the shower pumps. The accumulated black water in the tanks is discharged through the vacuum outlet.
- Special odorless hoses are used in the waste water system.
- The toilet tank has a capacity of 750 liters, and odorless hoses are also used in this system.
- WHALE brand waste and toilet pumps are located at the outlets of the black water and toilet tanks.
- The black water and toilet tanks can also be discharged from the bilge outlets located on the deck.

### AIR CON SYSTEM

The main unit of the WEBASTO brand central air conditioning system is located in the engine room. The water that comes out of the heating and cooling air conditioning system is distributed to the FANCOILs through insulated hoses from this main unit. FANCOILs are located in each cabin, the living room, and the kitchen. The plumbing is also ready in the flybridge area.

## DECK EQUIPMENT

**Electric winch:** QUICK, DUKE 24v/3500 watt

**Anchor, roller, and swivel:** ULTRA MARINE

**Chain:** 12-13 mm - 120 meters

**Stainless steel accessories:**

- AISI 316 stainless steel
- Main deck windlass
- Deck handles
- Flybridge windlass
- Mast

**Navigation lights:** OSCULARI (Port-Starboard-Stern-Bow-Masthead)

Mooring bitts and fairleads: Custom-made AISI 316 stainless steel

**Transformer:** EBR MARINE

It will be mounted on the stern platform of the boat. It can be used for getting in and out of the boat and for docking.

**Deck covering:** INFINITY WOVEN ROWING - TEAK PATTERN

The luxury woven vinyl used for the deck floor covering is produced in accordance with FMVSS 302 Federal Motor Vehicle Safety Standards. This standard is designed for passenger safety in case of vehicle fires. It has superior wear resistance and chemical resistance. It is guaranteed for 10 years.

**Deck shower:** Hot/cold marine type

**Chain wash kit:** FRESHWATER WASH KIT

**Stainless steel materials:** AISI 316L quality stainless steel will be used for all stainless-steel work on the boat.









## INTERIOR LAYOUT and MATERIALS TO BE USED

### CEILINGS

The ceilings of the aft master cabin, 2 guest master cabins, and 2 guest cabins will be covered with glossy white compact laminate material..

### SIDE WALLS

The side walls and wall panels of the stern master cabin, 2 guest master cabins, and 2 guest cabins will be combined with wood patterned compact laminate, flooring, mirror, and natural stone covering materials.

Specifications of the materials to be used:

- Flame resistant
- UV resistant
- Antibacterial
- Waterproof
- Durable and easy to maintain
- Complies with IMO regulations

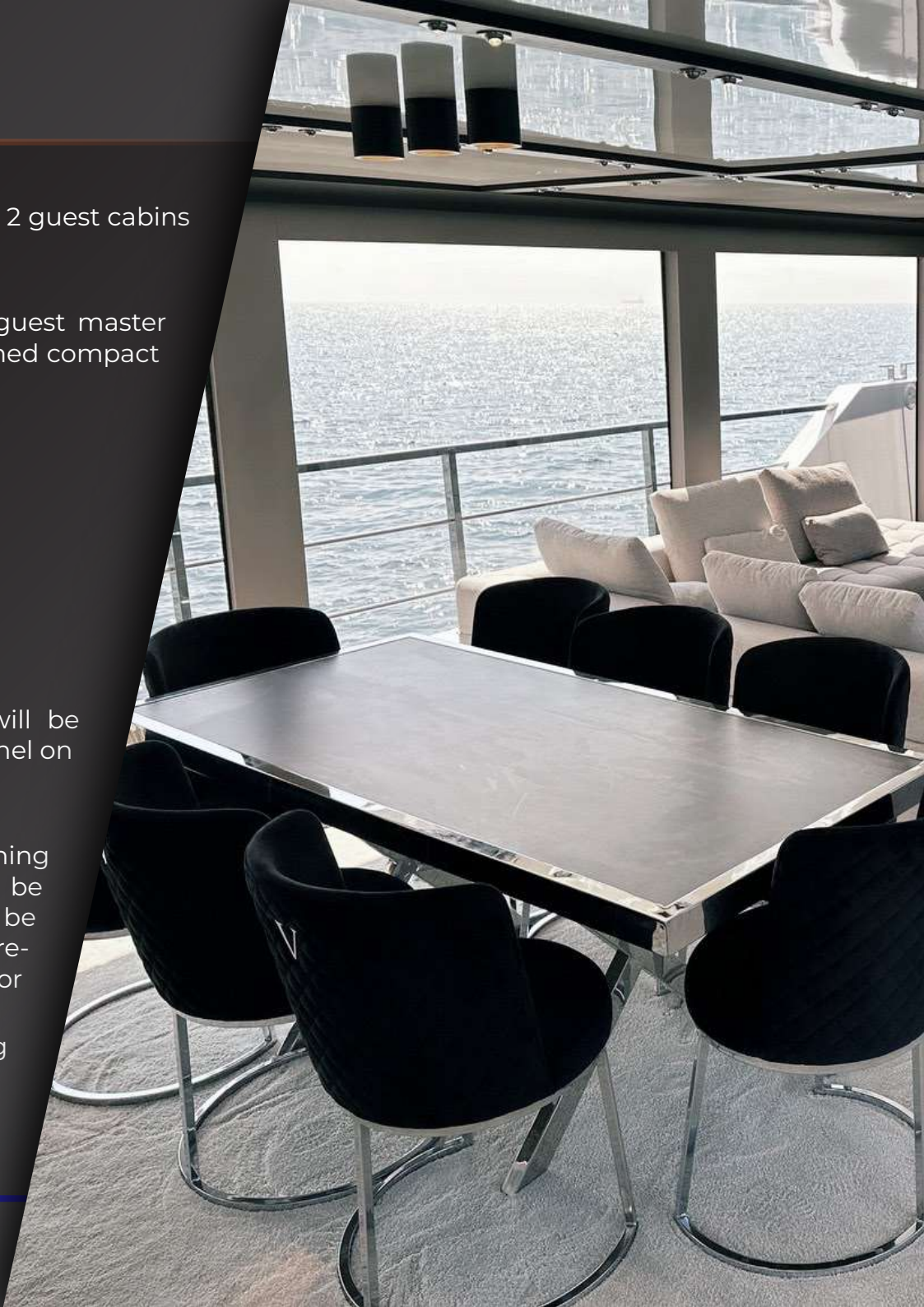
### CAMERA SYSTEM

The engine room, starboard/portside decks, and aft pool will be equipped with a camera system located at the main control panel on the boat.

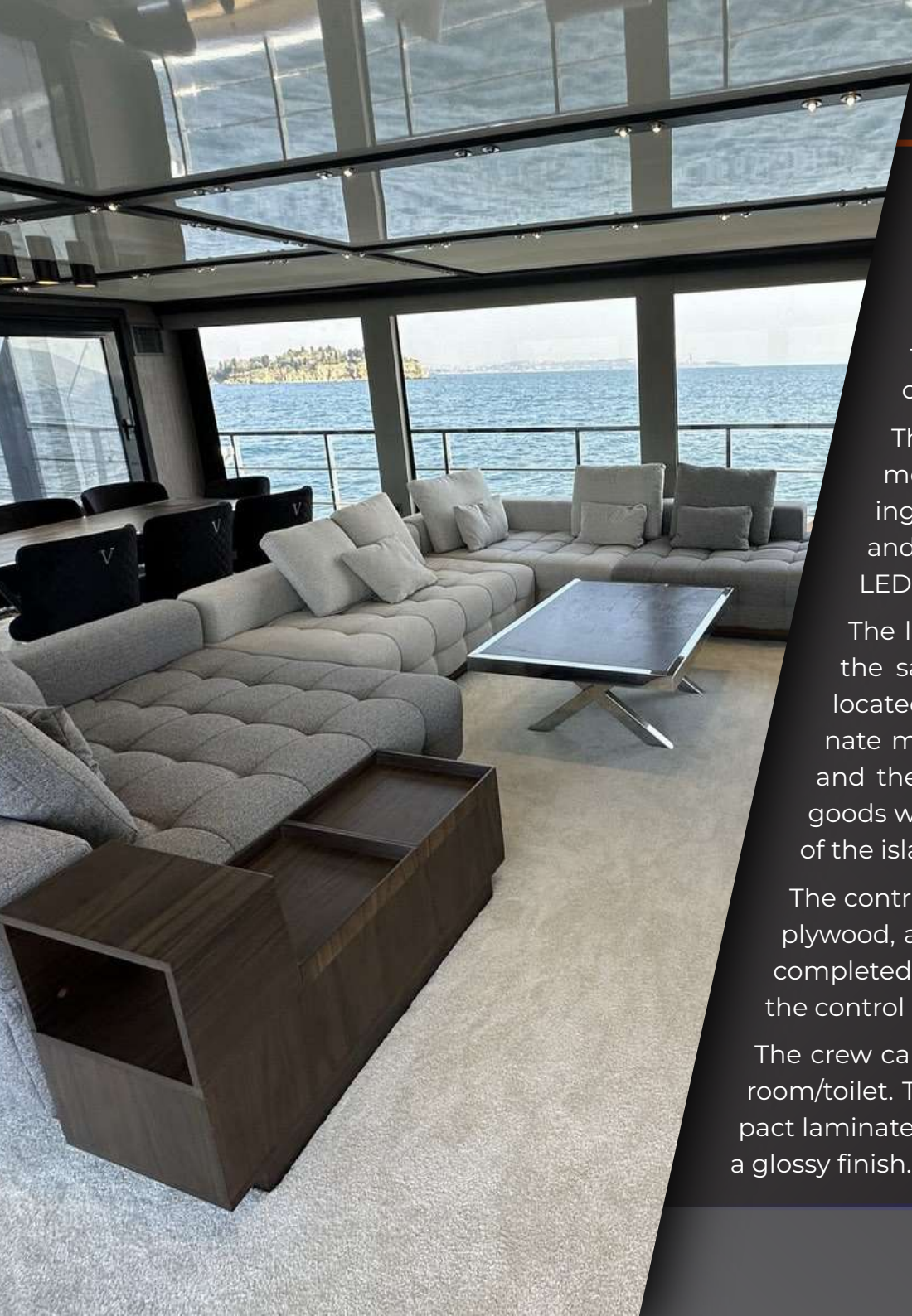
### FURNITURES

The beds, bedside tables, livingroom sofas, tables, livingroom dining table, and chairs, as well as the stern pool table and chairs, will be equipped with castors for easy movement. The cabin floors will be covered with ASSOCIATED VIEWERS brand antibacterial, stain-resistant carpet. The livingroom floors will be made of parquet or carpet.

Ceiling spotlights will be used for ceiling lighting. The lighting switches and various socket groups will be of the BTICINO brand. There are YALE brand safes in the stern master and guest cabins. The wireless infrastructure will be prepared for internet access on board.







There will be sufficient lighting and socket groups in the cabins. The walls and floors of the cabin bathrooms will be covered with LAMINAM, CERAMIC, and MIRROR, and the bathroom cabinets will be made of HIGH GLOSS laminate material. The shower cabins will be made of stainless steel profiles and tempered glass. The bathroom faucets, shower sets, and sink faucets will be of the GROHE brand.

The bathroom sinks will be of the ALVIT ARKITEKT glossy black model. There will be a mirror-covered upper cabinet with LED lighting above the sink cabinets. The toilets will be of the TECMA brand and touch-controlled. There will be sufficient amounts of ceiling and LED lighting and socket groups.

The livingroom entrance door will be an aluminum sliding door, and the salon windows will be of smoked tempered glass. The kitchen located in the front part of the salon will be made of HIGH GLOSS laminate material. The kitchen equipment will be of the SAMSUNG brand, and the installation of the countertop, sink, kitchen faucet, and white goods will be completed. The installation of the cabinets and countertop of the island located in the kitchen will be completed.

The control console will be covered with leather or compact laminate over plywood, and the installation of all motor and electrical equipment will be completed. There will be an aluminum sliding door on the starboard side of the control console.

The crew cabin will have 2 single beds, a small kitchen counter, and a bathroom/toilet. The cabin wall coverings will be made of wood laminate or compact laminate, the floors will be parquet, and the ceiling will be aluminum with a glossy finish. The machine room insulation and floors will be completed.

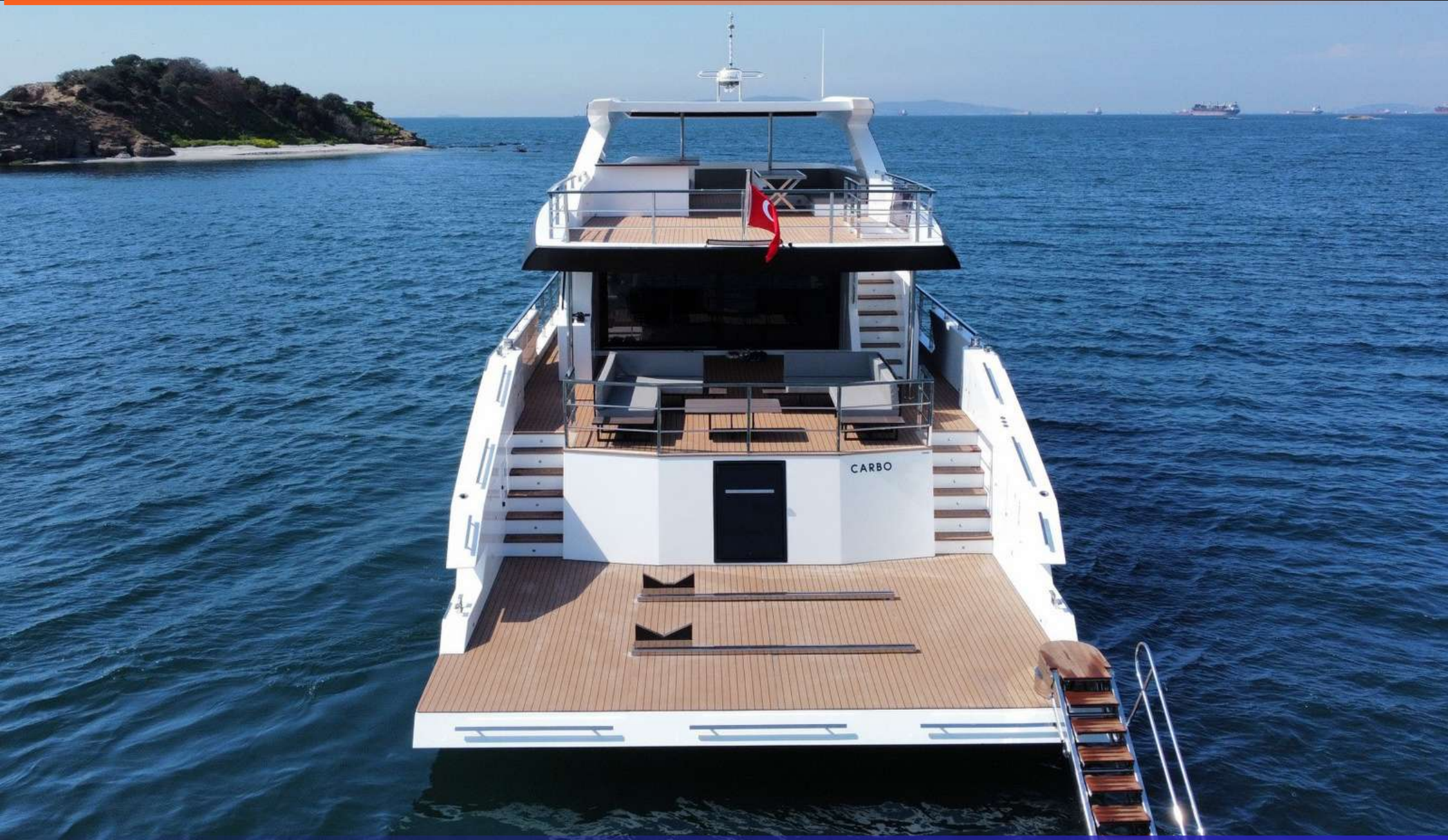
























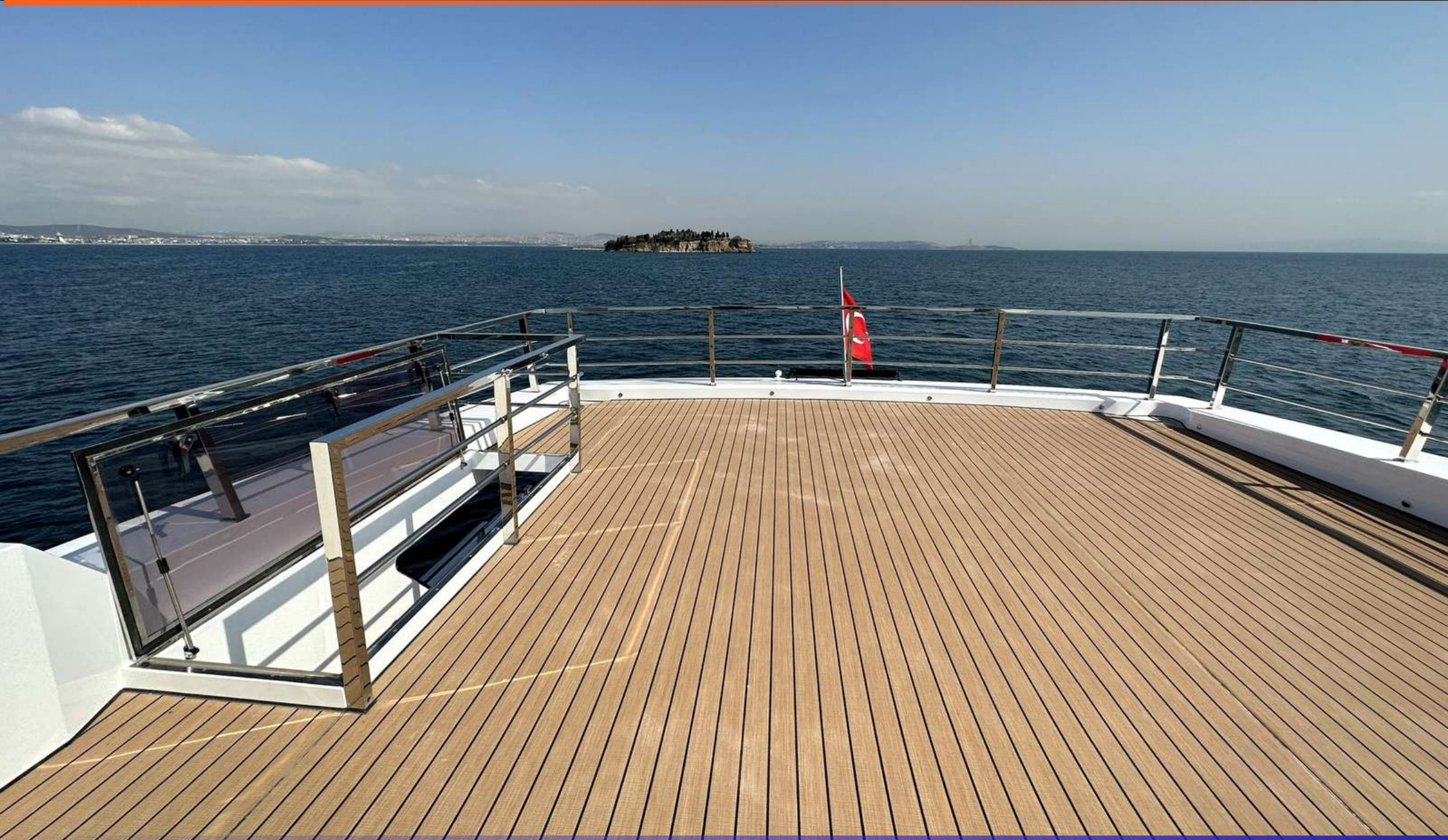




















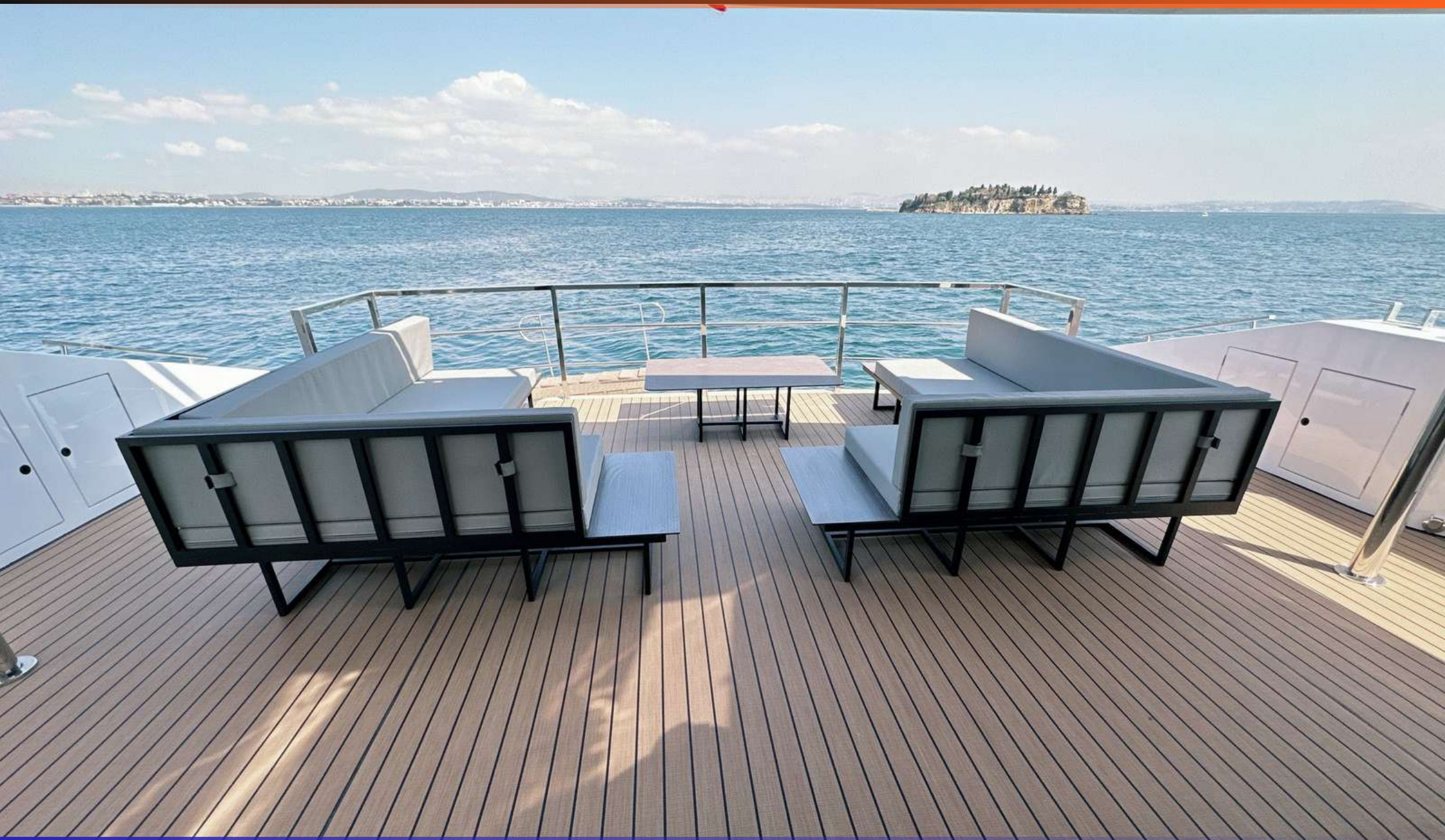




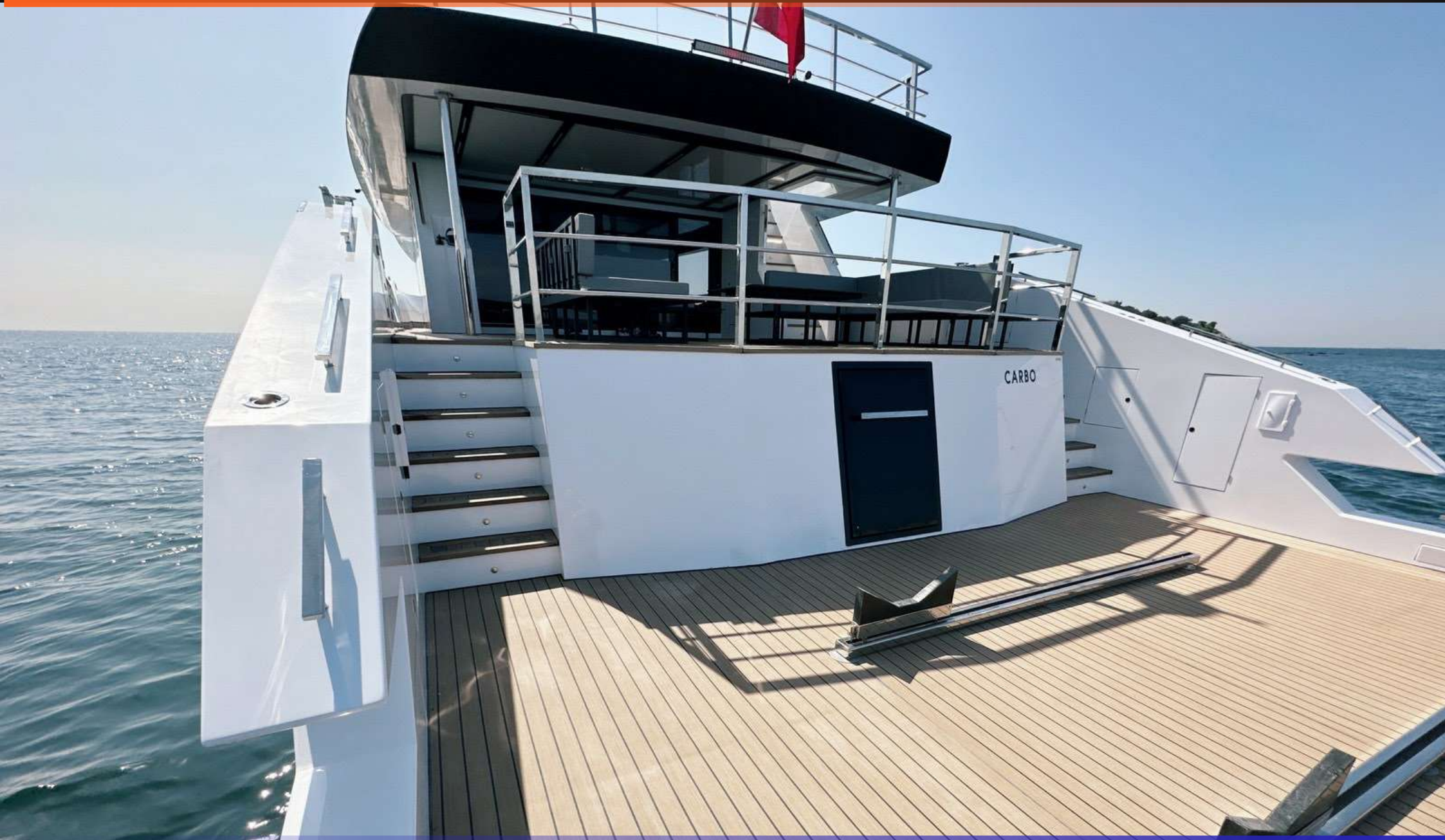
























































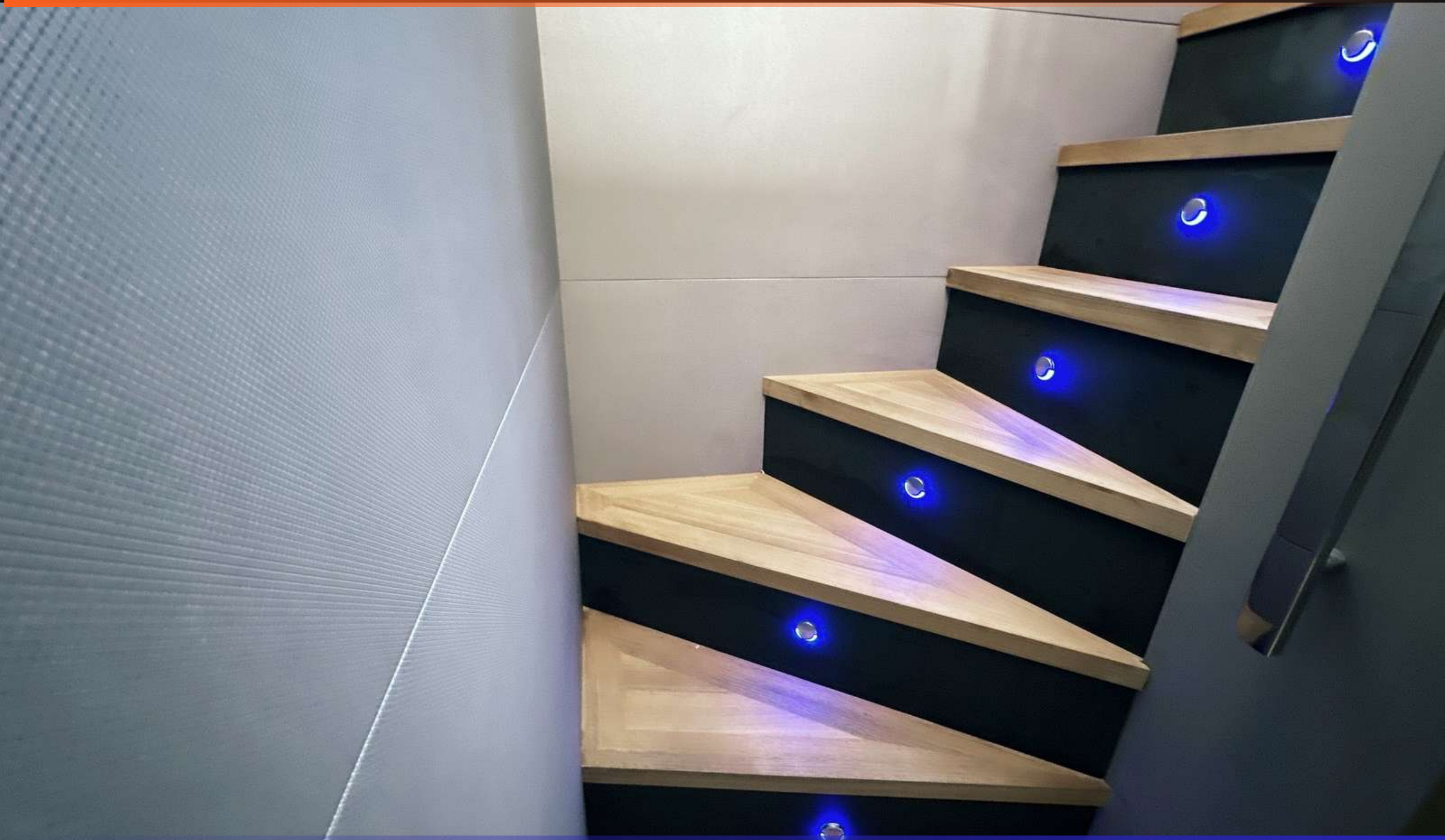
































































































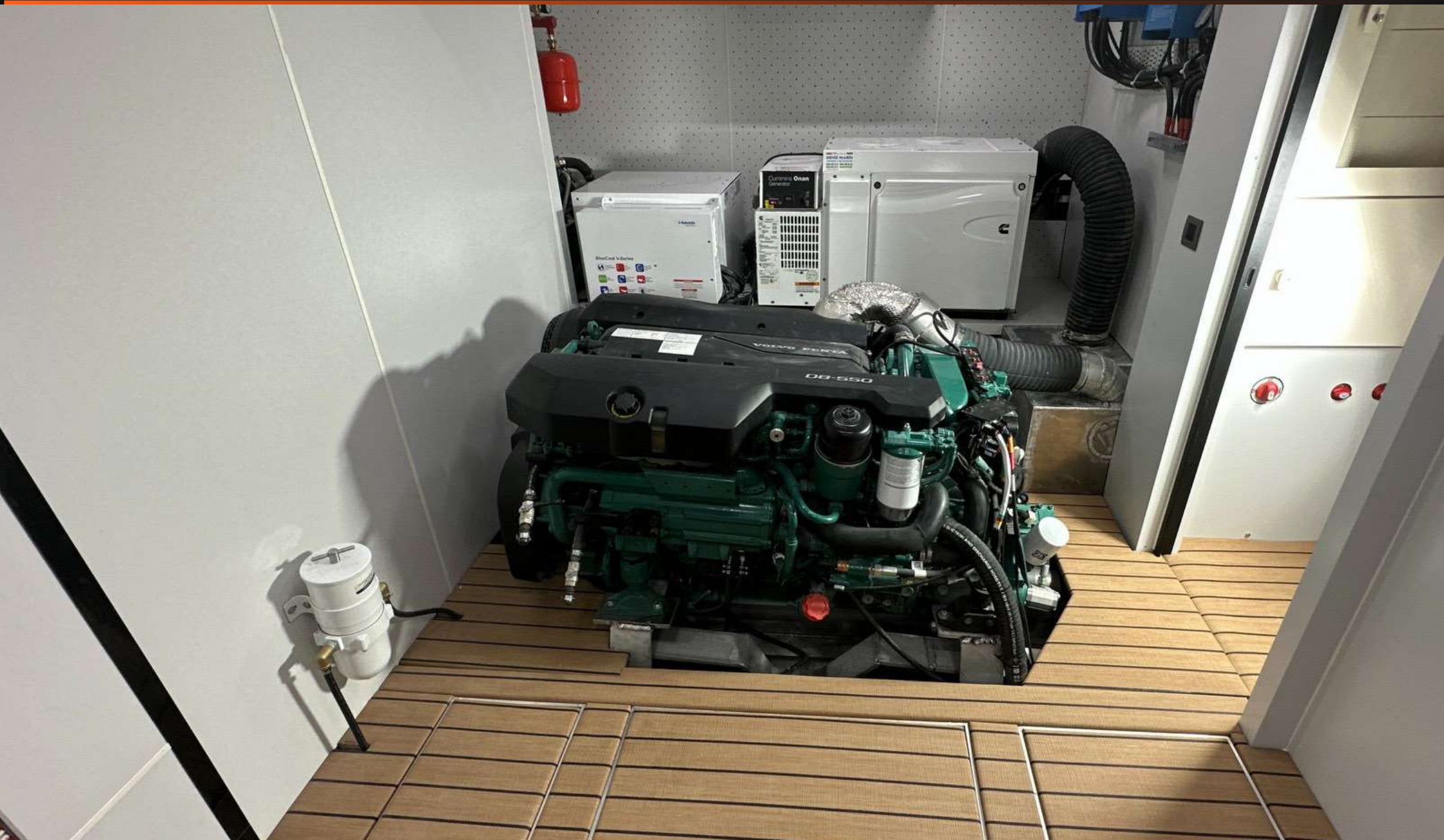
















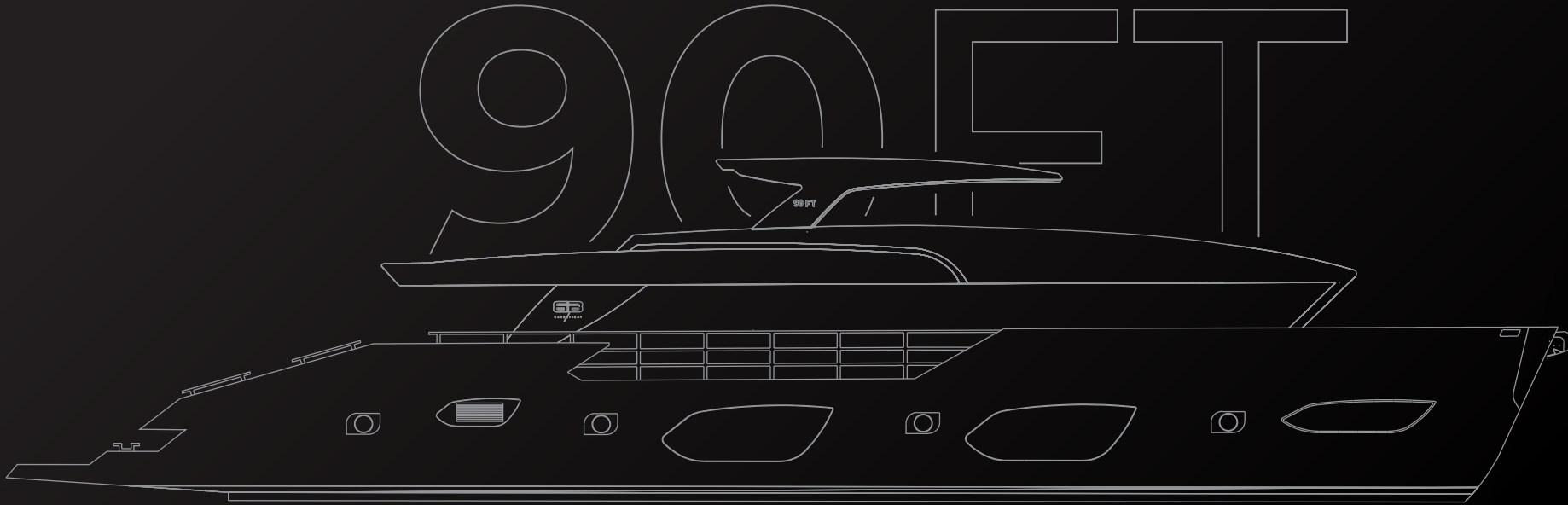












**SATIŞ OFİSİ**



Kordonboyu Mah. Ankara Cad. İstmarina No: 147 D: 191  
Kartal 34860 İstanbul Türkiye



+90 532 330 11 11



info@bcmarin.com



www.bcmarin.com

**FABRİKA**



Kömürcüler Mah. 2878 Sok. No: 22  
Döşemealtı Antalya Türkiye



+90 532 480 77 07



info@carboyacht.com



www.carboyacht.com