
Interior Design Portfolio

Emma Fazio

Interior Design Student at Bellevue College (CIDA-Accredited Institution)

Hastings Coffee Shop

Project

Project Details

Type

Commercial (hypothetical school project)

Tools Used

SketchUp, Layout, Enscape

Overview

This project was completed in my SketchUp course using a provided floorplan as the foundation. The goal was to learn the full design and rendering pipeline from modeling in SketchUp to visualizing the space in Enscape. While certain structural elements were required, such as door and window placement, flooring, and a shared brick wall, all other design decisions were left to me.

Design Intent

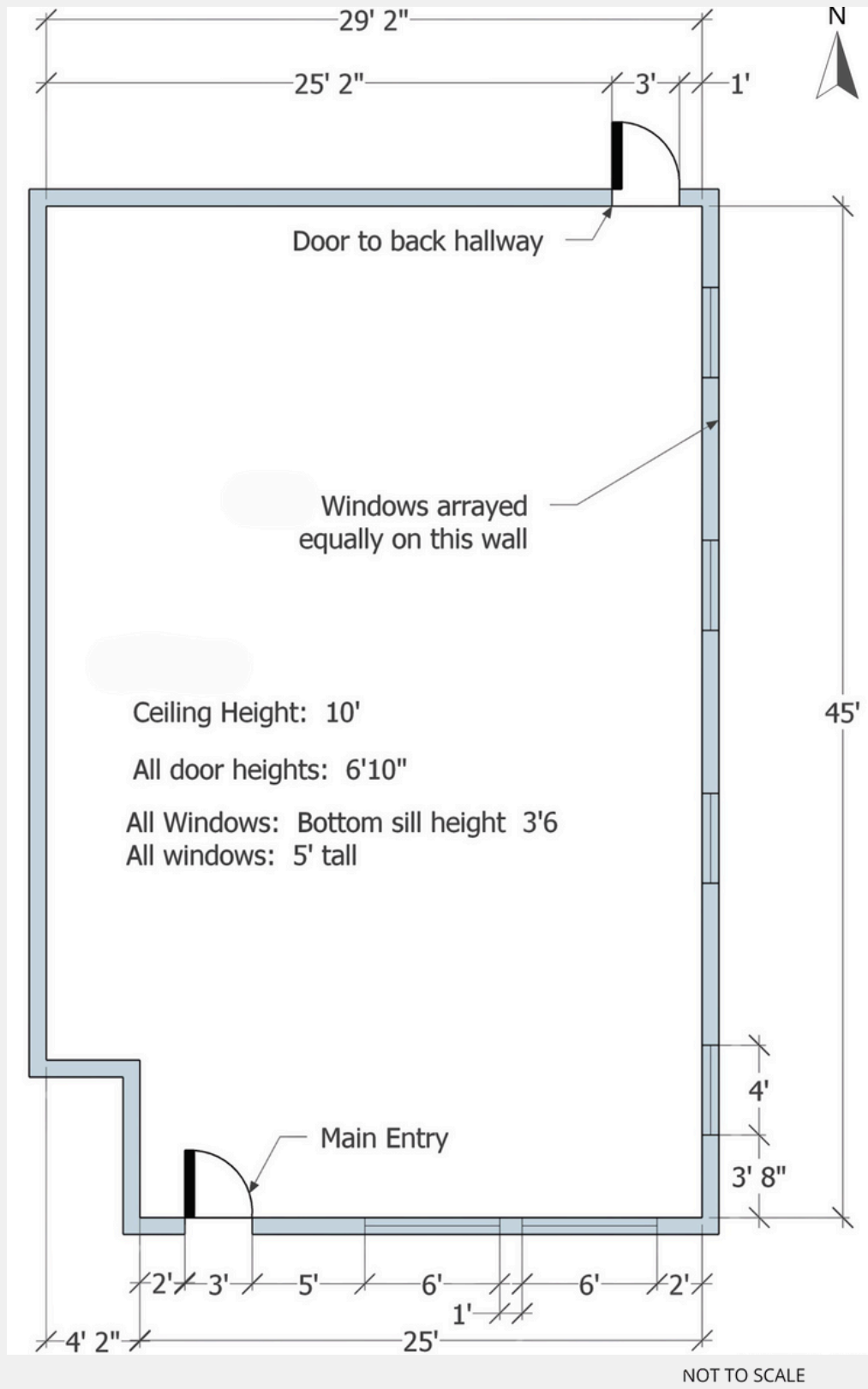
The concept was to create a cozy, earthy retreat for city professionals that provided a place to unwind, work remotely, or hold casual meetings. Set against a backdrop of urban cityscape and corporate hustle, this coffee shop offers warmth and calm in contrast. The design blends edgy black accents with warm woods and natural materials like concrete and plants, aiming to evoke a grounded, welcoming atmosphere.

Key Features

- A variety of seating options to support user needs: booths for privacy, lounge chairs, long communal tables for co-working, and inviting round tables
- Concrete counters integrated with warm wood to emphasize natural tones and textures
- Rich greenery and decorative touches like a collection of small coffee makers and teapots to add personality, charm, and interest
- Soft lighting and layered materials to create an inviting, comfortable environment for extended stays

Outcome

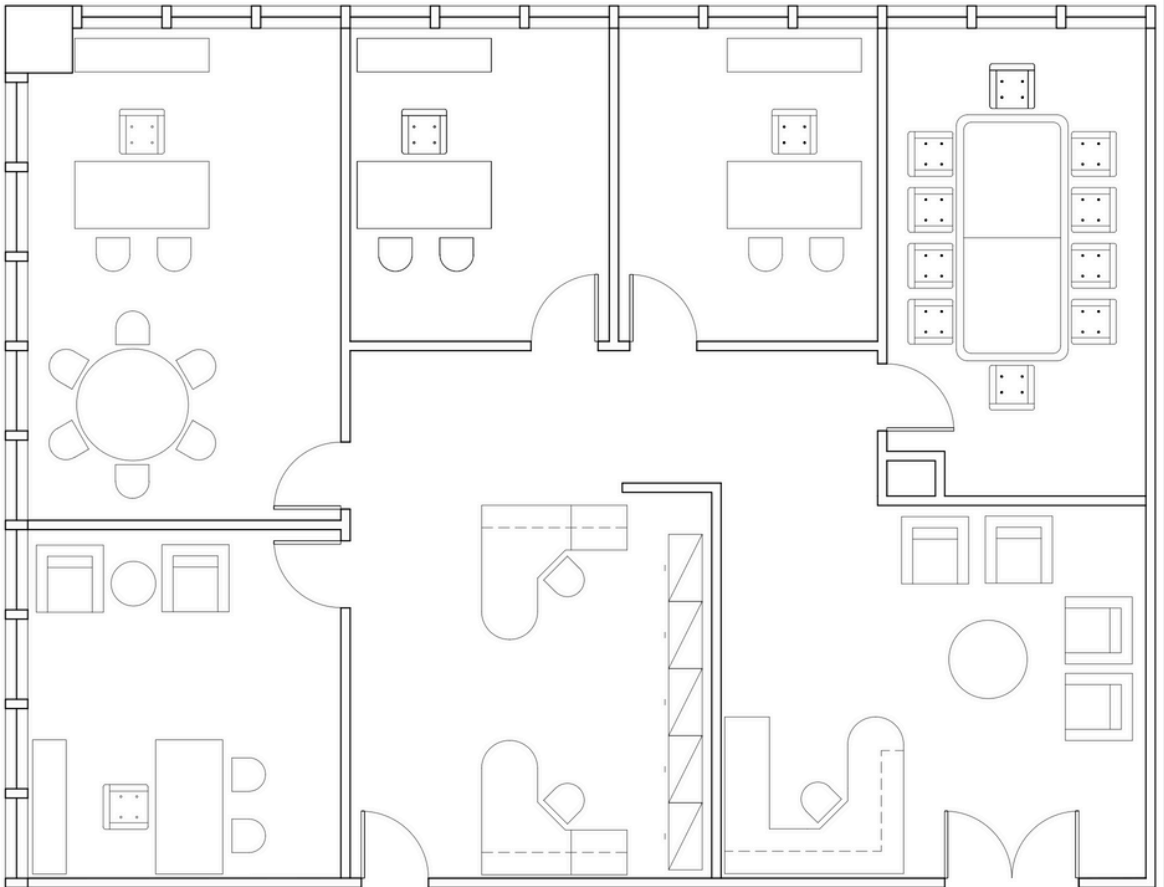
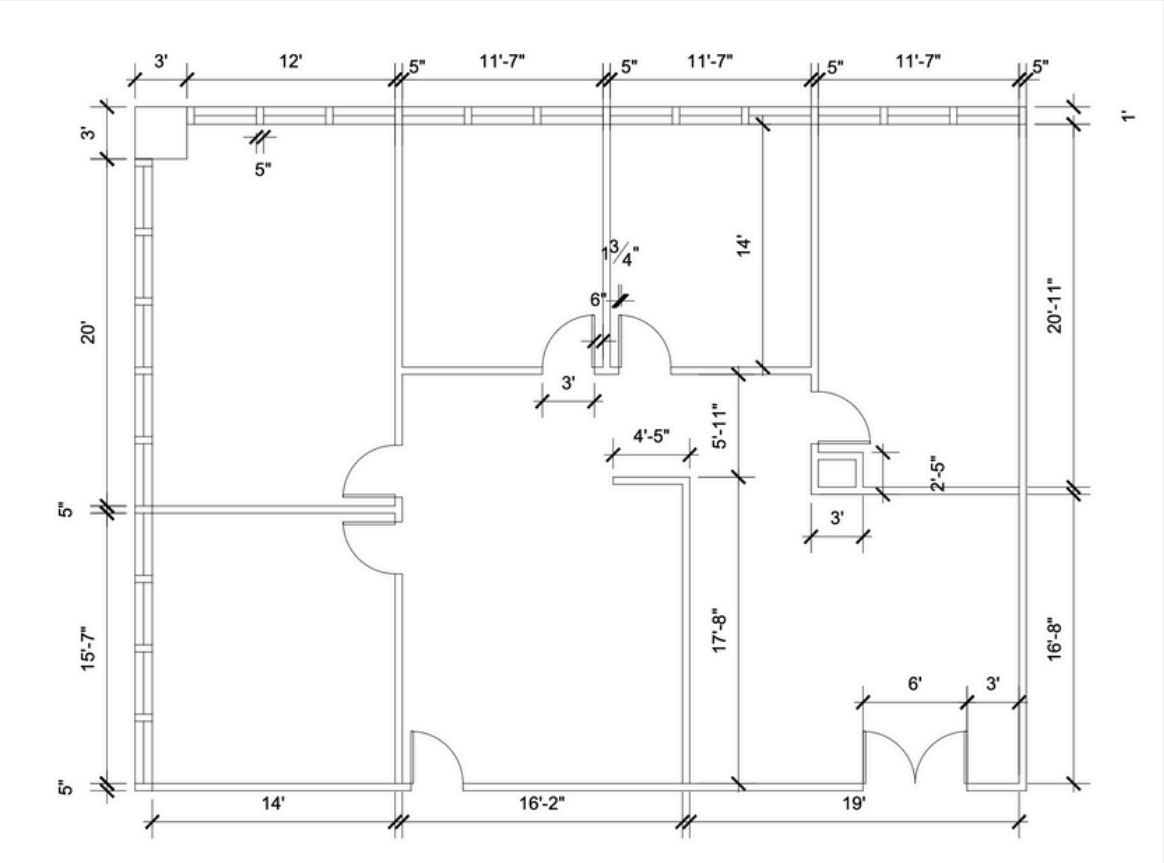
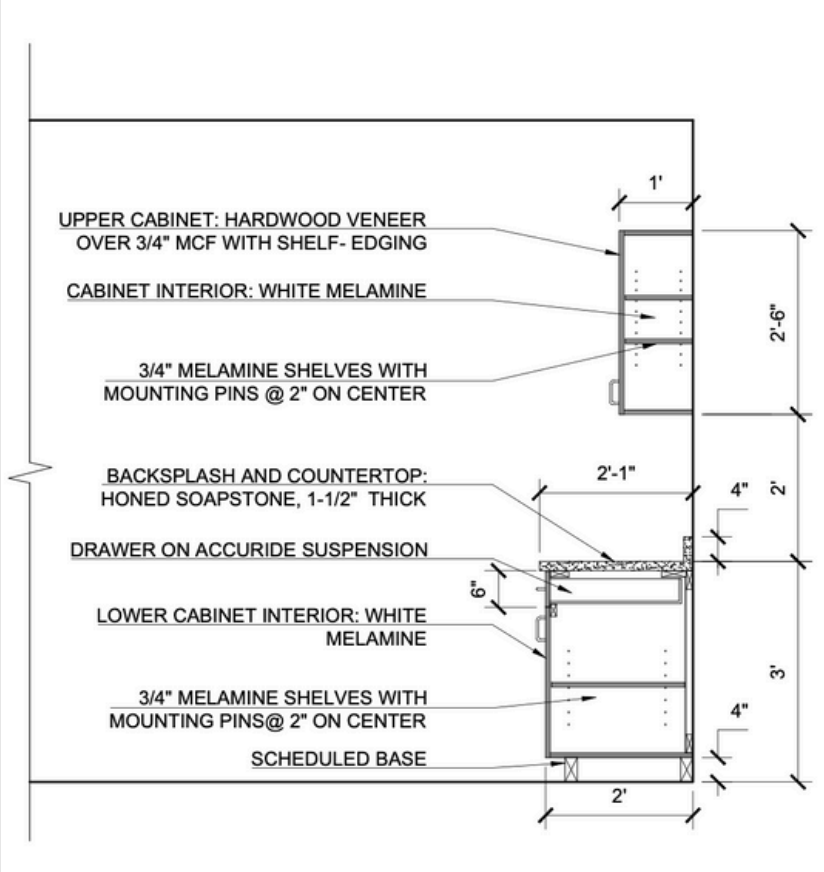
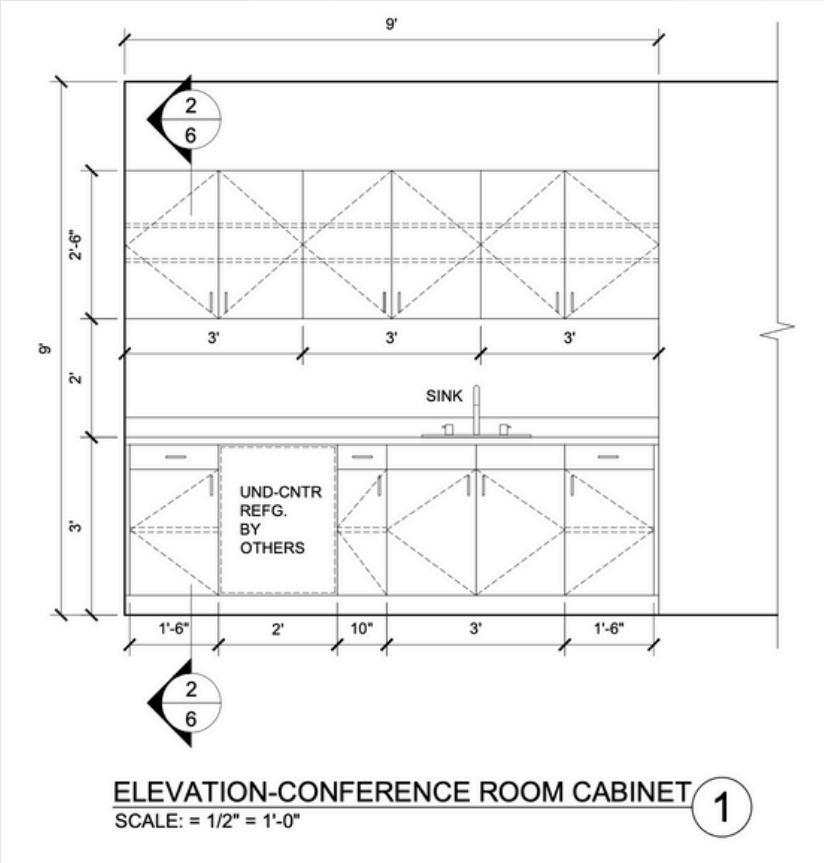
My project was selected as an exemplary piece of student work to present to CIDA for reaccreditation, marking a proud milestone in my first quarter of the Interior Design program.



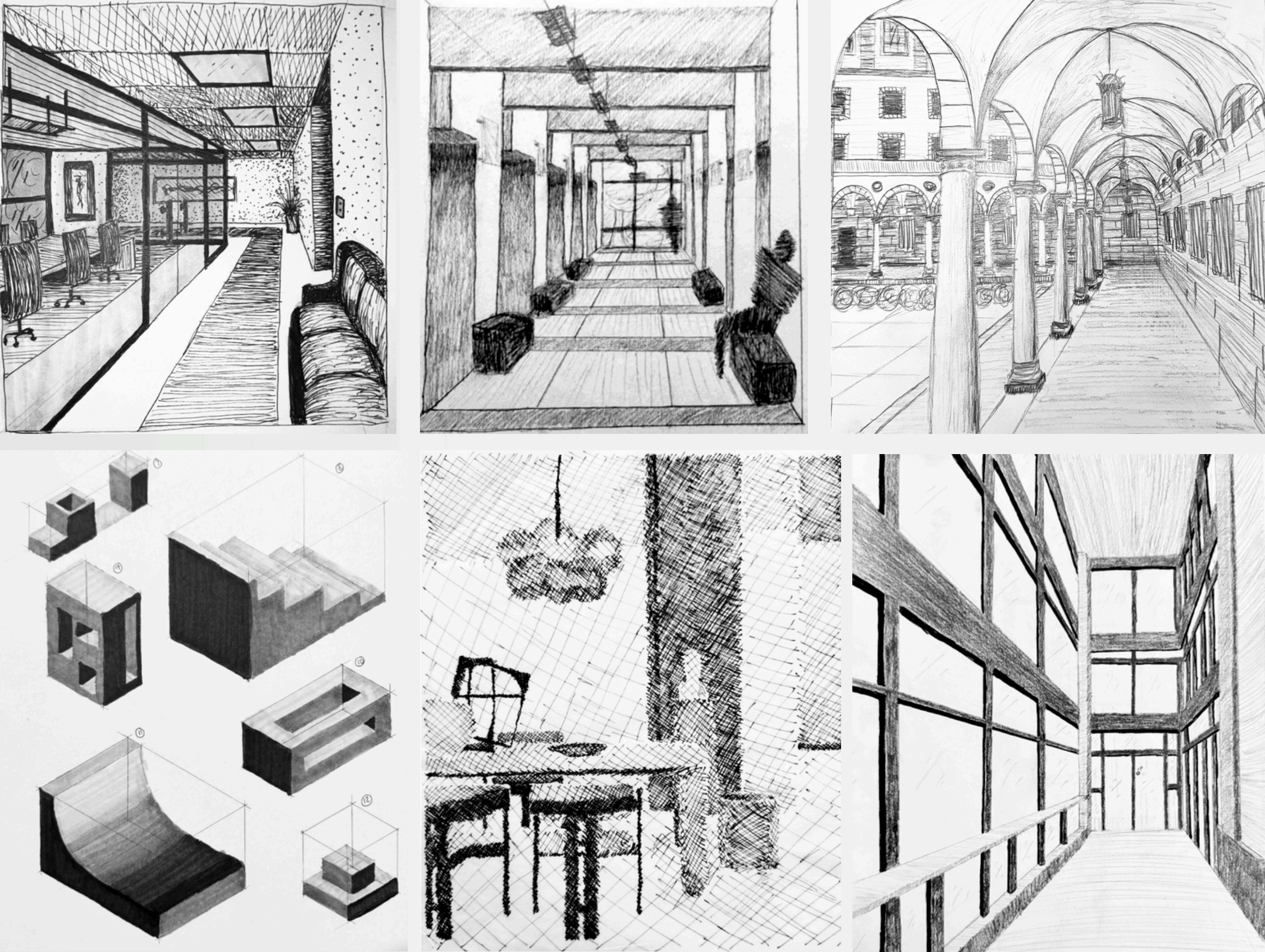


AutoCAD

Documents



Drawings & Sketches



Project M.O.
Project

Project Details

Type
Residential

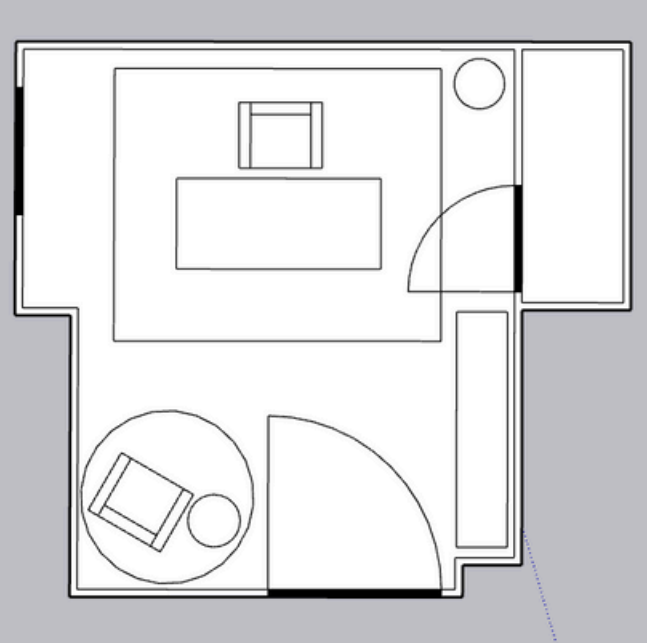
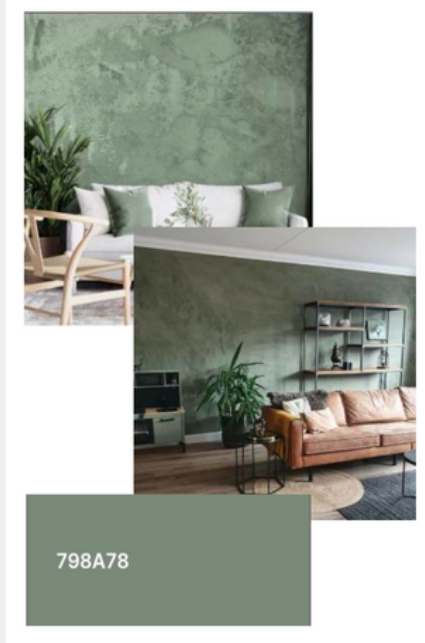
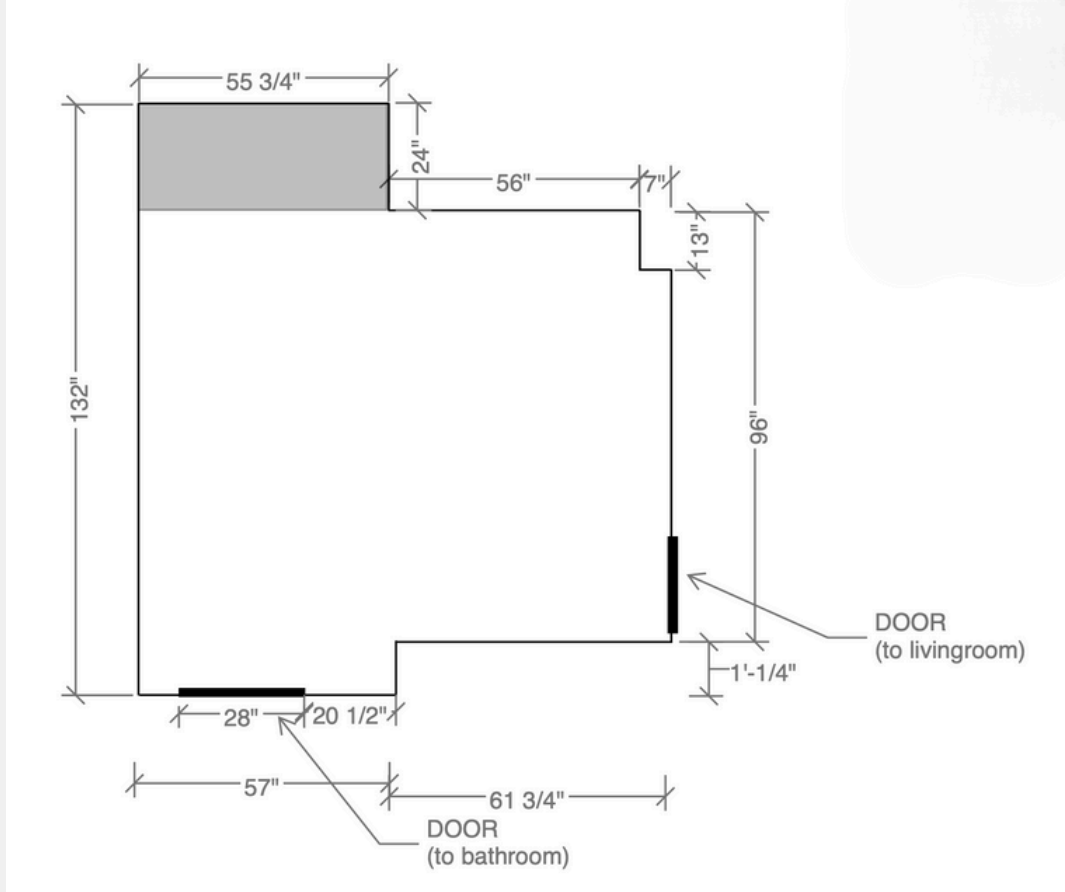
Tools Used
SketchUp

Overview
This pro bono project was created for a friend who had just purchased a new home. She wanted to turn an awkward, oddly shaped room with multiple doors and a small window into a cozy home office. The initial floor plan reflected the original layout, while the design plans incorporate her vision of moving the entry door to the opposite side of the room in the future.

Design Intent
The concept focused on creating a calming office space that would feel bright and functional despite limited natural light and square footage. The client requested incorporation of her existing bookshelf and desk chair, a comfortable reading chair, and thoughtful areas for her two cats, all while emphasizing green tones and a relaxed atmosphere.

- Key Features**
- A wall-mounted cat bridge that creates enrichment without taking up floor space
 - Low- to medium-light plants selected for viability in the dim room
 - A proposed green limestone wash on two walls to reflect her love of green while brightening the space with texture and depth
 - Multiple layout options presented before finalizing the most functional solution

Outcome
While the client has not yet implemented the changes due to pending renovations, this was my first experience working directly with a real client. I gained valuable experience in balancing preferences, constraints, and feedback in a practical, personalized design solution.



Project P.K.
Project

Project Details

Type
Residential

Tools Used
SketchUp, Milanote (for project planning)

Overview
This pro bono project was created for a couple who wanted help transforming their living space into something that better reflected their lifestyle and taste. They envisioned a home that felt cozy, welcoming, and personal, balancing individual preferences with a cohesive aesthetic that felt intentional and lived in.

Design Intent
The couple expressed a love for vintage charm, mid-century modern design, and organic, earthy elements. They also had a strong preference for warm woods and unique, collected pieces that felt one of a kind. To help them explore these styles, I created three mood boards, one for each aesthetic, and a fourth that blended all three into a unified vision. A key part of my approach was finding a visual balance between femininity and masculinity through texture, color, and furniture choices, allowing the space to feel reflective of both partners.

- Key Features**
- Multiple layout suggestions that addressed their specific spatial needs
 - A cozy, layered color palette featuring warm woods, soft textiles, and curated accents
 - A comprehensive set of linked furniture, lighting, and decor suggestions tailored to their style, budget, and timeline
 - Design flexibility that encouraged gradual implementation as time and resources allowed

Outcome
The final deliverables included mood boards, layout options, and a curated shopping guide with extensive linked product recommendations. The couple has already begun incorporating the designs into their home and recently purchased the green couch featured in one of the mood boards. This project affirmed my love for people-centered design and highlighted how thoughtful styling can bring out a space’s full potential.



