

# Medical Pilot

**SOFTWARE FOR STANDARDIZING MEDICAL PROCESSES**

The complete solution for optimizing workflows  
and standardizing medical reporting

Dear Colleagues,  
Dear Healthcare Professionals,

I am pleased to introduce **Medical Pilot**, an innovative tool designed to improve the quality of medical processes, developed as part of my doctoral research. This software was created to address a real need: the lack of an integrated solution that ensures both the optimization of workflows in the medical system and the standardization of medical reporting.

Medical Pilot is both a **patient management software** and a **digital assistant for standardizing medical processes**. It addresses a critical issue in our field: the variability in how clinical data is documented and analysed, which can affect the quality of medical decisions and care. From this perspective, it is a unique product on the market, distinguished by its complexity and advanced features.

**Main Benefits of Medical Pilot:**

- **AI Assistant** at every stage of the medical process.
- **Standardized and automated medical reporting**, reducing errors and ensuring uniform documentation.
- **Electronic patient records** with photo-video documentation of all medical procedures.
- **Advanced decision support**, based on clinical data analysis and quality indicators.
- **Improved efficiency** in medical processes by reducing documentation time and integrating with existing systems.
- **Intelligent monitoring** and analysis of institutional performance.

This software is not just a technological tool but a concrete step toward a more efficient, safer, and better-organized healthcare system.

We invite you to explore how Medical Pilot can transform your medical practice, improving both operational efficiency and patient outcomes. Together, we can raise the standard of healthcare to provide patients with the experience they deserve.

With great respect,

*Andrei Groza*

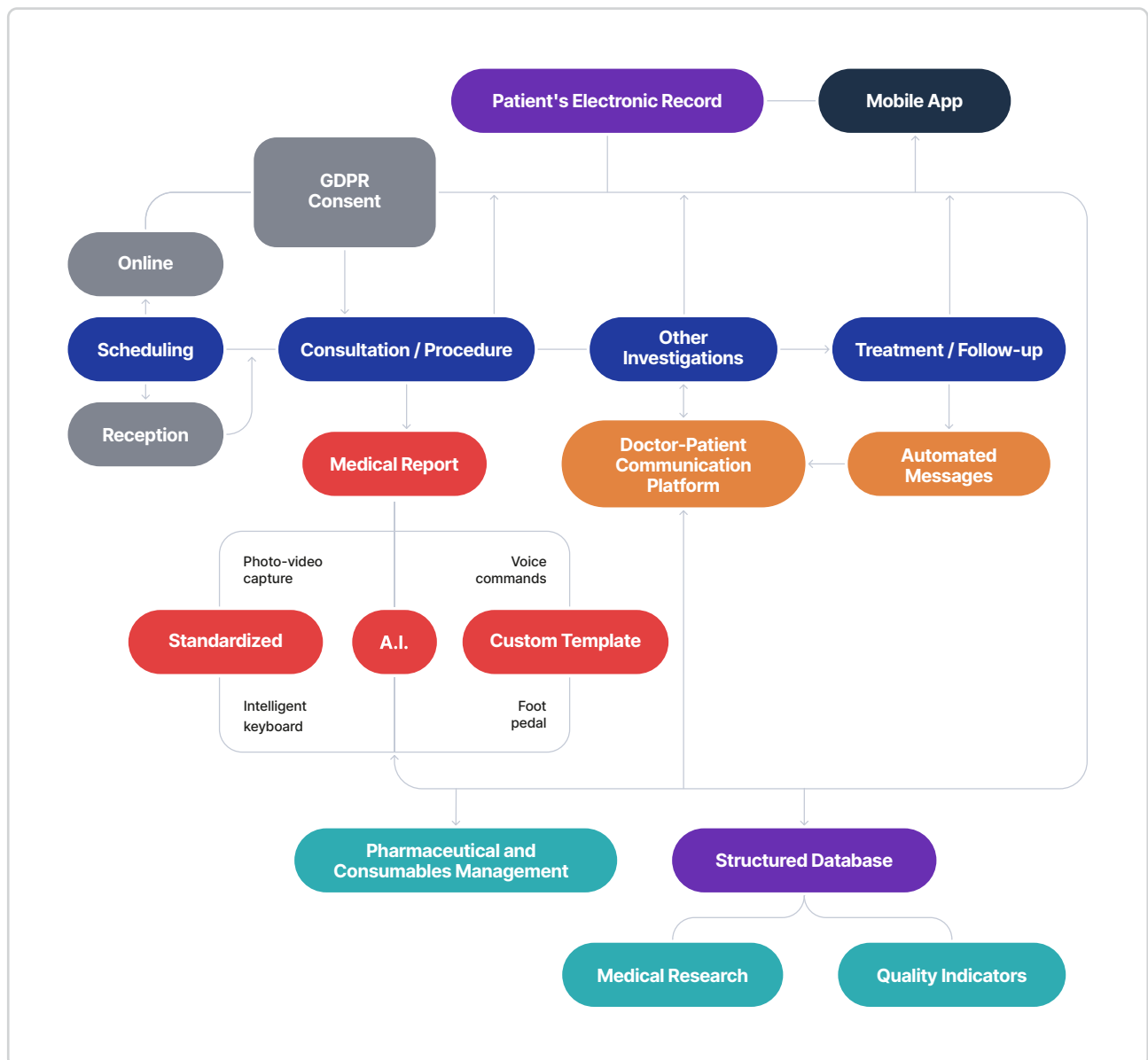
**Andrei Groza**  
General Director



# What is Medical Pilot?

**Medical Pilot is an end-to-end software solution for patient and medical process management.**

In summary, Medical Pilot ensures the flow of patients and medical processes from appointment scheduling to drafting medical reports while facilitating remote communication between doctors and patients.



# Features Offered by Medical Pilot



## Medical Documentation Module

The core feature of Medical Pilot is its capability for comprehensive documentation and reporting.

### 1. Free-text Documentation Function, custom template

During consultations, data can be entered into predefined text fields for each stage of the medical process **using free language**.

**Custom templates** can be defined for each specialty or individual doctor. For optimization and efficiency, data can also be entered via voice commands or dictation.

### 2. Standardized Documentation Function

Data is entered through predefined fields (single/multiple selection) for each stage of the medical process, **following international specialty guidelines**.

The main benefits of standardized reporting are related to greater safety for both the medical act and the patient. In standardized format, steps are well-documented in line with international quality standards.

The medical language used is standardized with international classifications and descriptions, making it easy to understand and interpret a medical report regardless of clinic, country, or language. **Medical Pilot also offers translation of reports** into other languages with a single click.

Medical data collected in standardized format can then be easily queried and used in studies

### 3. AI-Powered Reporting Functionality

Medical Pilot uses artificial intelligence algorithms at every stage of the medical process, from anamnesis to treatment recommendations and follow-up:

- **Anamnesis:** The AI assistant listens to and interprets discussions between doctor and patient, populating necessary fields (medical history, reasons for consultation, etc.) using medical terminology.
- **Procedure:** The doctor dictates or manually enters identified pathologies, while the AI generates a complete procedural result.
- **Conclusions/Recommendations:** Automatically generated based on details from anamnesis and procedures.
- **Daily summaries or discharge notes:** Generated by analyzing previously entered fields alongside other medical documents (e.g., lab results).



Each type of reporting supports multiple methods for data entry:

- keyboard/mouse;
- touchscreen;
- programmable smart keyboards (with unlimited customizable commands);
- voice commands/speech-to-text/quick commands;
- foot pedal controls.



Each type also includes **photo-video capture** functionality that integrates video signals from any connected medical equipment.



## Centralized Patient Management Module

1. **Patient Scheduling**, including online appointment options.

2. **Patient Management**, which includes:

- **Interoperable patient database** with chronological timeline (patient timeline).
- **Viewing medical reports** directly from the timeline.
- **A section that digitally stores the patient's medical history**—previous reports, lab results, histopathology results—which is visible to both healthcare staff and manageable by patients.

3. **Online Patient Account** (digital patient record):

Patients can schedule appointments online, manage their medical documents, and communicate with their doctors via an integrated chat function available through their digital account (accessible via mobile app or desktop).

The account can be accessed from the **MyMedical Pilot mobile application** or from a desktop



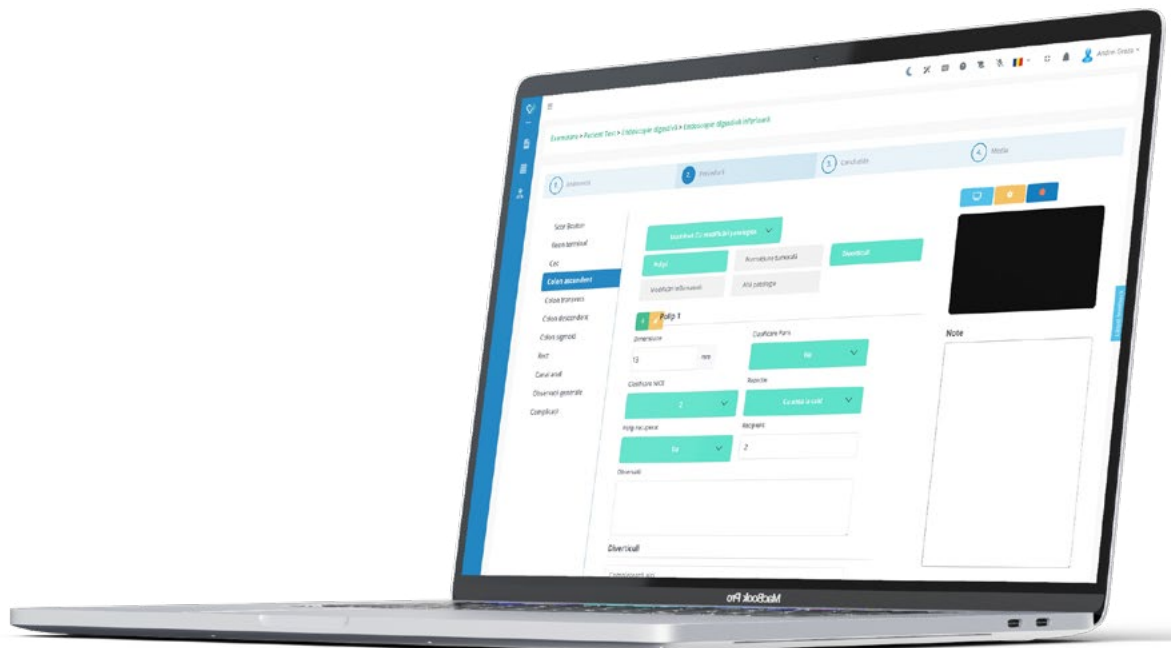
## Inventory Management Module

**Ensures intelligent stock management** for medications and consumables through barcode scanning upon entry/exit from inventory.



## Business Intelligence Module

**Allows filtered database queries** for studies and medical research as well as real-time monitoring of quality indicators and institutional performance metrics.



# How Does Medical Pilot Work?

Medical Pilot is a web-based platform, with data securely stored in the cloud (Microsoft Azure).

The application can be accessed from any internet-connected device or installed on-premises upon request.



The web app available in the browser, at [web.app.medicalpilot.eu](http://web.app.medicalpilot.eu).



**My Medical Pilot**  
Mobile app available on Google Play Store

**Medical Pilot includes five user categories—Manager, Receptionist, Doctor, Nurse, Patient**—and additional categories can be defined if needed.

The information displayed and functionalities differ depending on user category to ensure optimal data flow, ease of use, and platform security.

#### FOR EXAMPLE

Doctors have access to:

- **Appointment scheduling**
- **Patient database** (including chat functionality)
- **Real-time report generation** during procedures (via touchscreen or voice commands)
- **Photo-video capture** from connected equipment (e.g., ultrasound machines or endoscopes).

Examination results are generated in PDF format within customizable forms for each institution that can be printed directly or shared with patients or other doctors through the application.

#### Additional Benefits Offered by Medical Pilot:

- **API integration** with other patient management platforms.
- **Flexibility** for customization according to institutional needs.
- The patient's **electronic medical record**.
- **Enhanced security** for cloud-stored data (Microsoft Azure platform).
- **Automatic security and performance updates** for all applications in the suite.
- **Automatic updates** aligned with international specialty guidelines.
- **Online training sessions** for staff and 24/7 technical support.
- **Eligibility for European funding projects** due to cloud technology integration with AI capabilities.

## What Our Users Say

“ The web interface is intuitive and easy to use.

“ It facilitates communication with the patient through the existence of the electronic medical record (uploading medical tests, histopathology results, chat functionality, and notifications).

“ I quickly understood how to use the application after only 30 minutes of training.

“ The web interface is complex but highly responsive.

“ It helps me reduce the time allocated for a digestive endoscopy. I even started calling patients to ask them to come earlier because I finished all procedures much faster.

We will certainly be able to reduce the time allocated for an endoscopy, which will allow us to schedule more patients within the same time frame.

# Medical offices configured with Medical Pilot



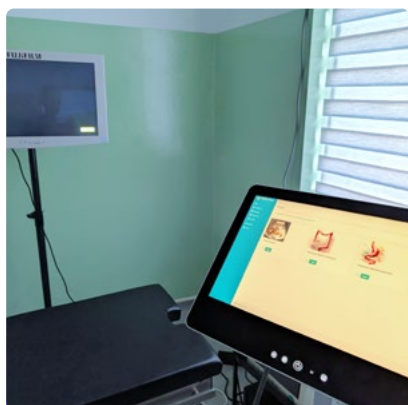
Digestive Endoscopy Office



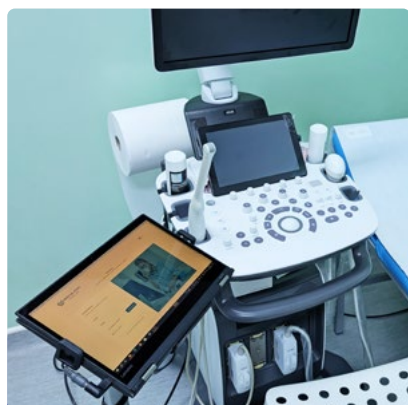
Urology Office



Endocrinology Office



Digestive Endoscopy Office



Gynecology Office



Gastroenterology Office

“ My patients told me they felt safe because the endoscopic process has clear steps, with detailed questions that inspire confidence in the patient.

At the end, when they received the medical report, it contained investigation photos, and medical terms were explained in a way that was easy for the patient to understand—a very helpful feature thanks to AI integration.

“ My patients have access to their patient account where they can find their medical reports as well as photos or recordings from ultrasounds. This is especially important when monitoring a pregnancy.

These photos are no longer printed on ultrasound paper but remain in their account to be viewed and revisited anytime. They can also be printed on high-quality paper and kept as cherished memories.

# Did You Know?

UP TO

**8%**

**of patients scheduled in a clinic do not show up for their appointment** or have a contraindication for a procedure they were scheduled for?

UP TO

**16%**

**of patients receive incomplete diagnoses and recommendations** following invasive medical procedures?

UP TO

**10%**

**of the pathology identified during digestive endoscopies is forgotten to be mentioned in the report** or is incorrectly described?

UP TO

**18%**

**of patients do not receive post-procedural follow-up recommendations?\***

**Medical Pilot guides the entire patient journey** from scheduling, anamnesis, medical procedure or consultation, to the final report.

This reduces risks, thereby increasing the safety of the medical act and enhancing patient trust.

\*Figures resulting from the feedback received from our users and observed after the integration of Medical Pilot into the medical process



**MEDICAL PILOT**  
Unifying Care

medicalpilot.eu  
office@medicalpilot.eu  
+40 750 211 223