



## MEDICAL PILOT

# Your digital assistant for everyday endoscopy

**Comprehensive documentation  
and real-time reporting**

- Procedural guidance
- Photo&video documentation
- Automated reporting



# Medical Pilot is your digital assistant in digestive endoscopy

Medical Pilot is a software platform designed to help you work more efficiently and to document every stage of the medical procedure completely and accurately, in real time as it unfolds.

We know what a typical day in the endoscopy room looks like. The procedure ends. But the work doesn't

Next comes reporting, selecting and organizing images, and completing the details—most often, from memory.

On busy days:

- there isn't enough time
- documentation becomes an effort;
- consistency is hard to maintain

Quality remains important—yet in practice, it competes with time and with the other patients waiting to be seen



**It guides you discreetly**

**Organizes information**

**Builds the report as you work**

Developed from clinical practice and medical research, the Medical Pilot application is designed to turn quality standards (ESGE) into something easy to apply in everyday practice.



# Medical Pilot Benefits



## Complete examinations, without added time

**Your procedure steps are visually guided through simple selections,** ensuring you cover every stage of a complete endoscopy in line with ESGE best practices—without prolonging the procedure.



## Clear documentation, ready for any situation

**Photo and video captures,** together with integrated classifications, ensure precise, consistent, and easily verifiable documentation. Complex cases are now fully documented, with the entire history at your fingertips.



## When the procedure ends, the report is already done

Your report is built automatically throughout the examination and is ready as soon as the endoscope is withdrawn.

**You save an average of 6–10 minutes per case** and can schedule up to 20–25% more patients per day. You can edit the report at any time, with all information clearly visible in the procedure timeline.



## Consistent quality, regardless of context

**Standardized workflows** reduce variability between procedures and help you maintain the same level of quality—regardless of the day, workload, or team.



## Better detection, supported in real time

**Key quality indicators are visible in real time,** giving you immediate confirmation that the examination is on the right track (ADR, cecal intubation rate, withdrawal time, examination time, etc.)



## Integrated training for residents

**Residents learn the correct, standardized workflow** from day one—faster alignment, fewer variations, and smoother integration into the team.



## Greater patient confidence

Clear, easy-to-explain documentation allows you to communicate findings and recommendations more effectively.

The patient understands what was done and why, while you gain trust, clarity, and continuity in the doctor–patient relationship.

### Other benefits that matter

- Fast initial team onboarding
- Simple, easy-to-use guidance
- Clinical updates aligned with international guidelines
- Automatic security updates
- API for integration with existing systems (EHR / HIS)
- Secure cloud storage (Microsoft Azure)
- Dedicated technical support

Certified product  
ISO 27001  
ISO 9001



# How Medical Pilot helps you, step by step

Medical Pilot integrates seamlessly into your workflow and supports you throughout the procedure.

**Intuitive, interruption-free interaction** — via shortcuts, smart keyboard, touchscreen, foot pedal, or dictation—without breaking your clinical flow.

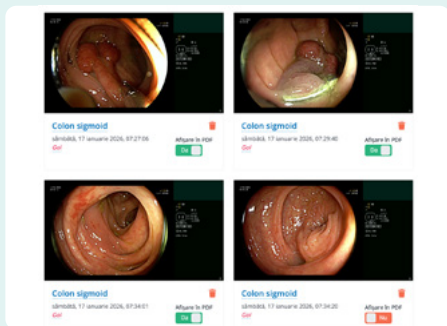
## 1 Anamnesis

Referring doctor	
<b>Indication</b>	
Previous colonoscopy	Screening
Procedural risk	
Bowel preparation	GI bleeding
Sedation	
Premedication	Therapy
	Anemia
	Incomplete

## 2 Procedure

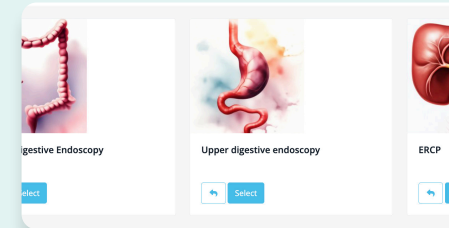
Bowel prep (Boston Score)	
Terminal Ileum	
Cecum	Examined, with pathology
<b>Ascending colon</b>	Polyps
Transverse colon	Inflammation
Descending colon	
Sigmoid Colon	
Rectum	Polyp 1
Anal canal	Size: 0 mm
General comments	NICE classification: 2
Complications	

## 3 Media

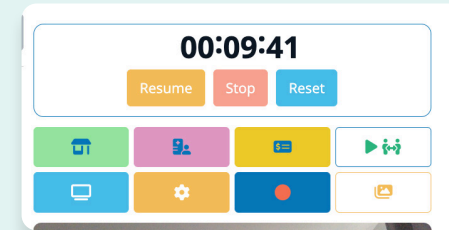


## 4 Conclusions

<b>Conclusions</b>	
AI-generated explanations	
Recommendations	Generate conclusions
Treatment	
Follow-up colonoscopy	Fill in here.

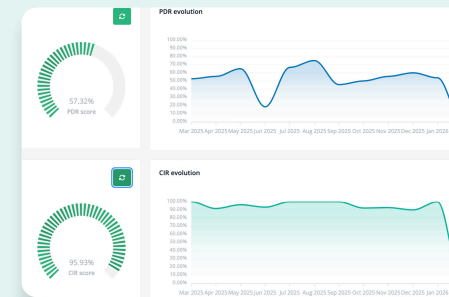


**Visually guided pathway** with clear steps and drop-down or selection-based menus



**Integrated timers** for full clinical context.

**Photo and video capture** exactly when it matters.



**Quality indicators** recorded automatically.



**The report is built in real time** and is ready at the end of the procedure.

# The Medical Pilot ecosystem

**Everything in one place.** Medical Pilot provides a modular digital ecosystem designed to support medical practice before, during, and after consultations or investigations—with a strong focus on **quality, safety, and time saved for the physician.**

## 1 Clinical modules

**A digital assistant adaptable to multiple specialties.** Medical Pilot extends the principles of standardization and documentation by offering support across a broad range of medical fields.

### Digital assistant for procedures and consultations

- Standardized medical reporting for digestive endoscopy, abdominal and cardiac ultrasonography
- Structured medical consultations across multiple specialties
- General ultrasound
- Photo/video capture from any equipment, secure cloud storage, and templates tailored to your working style—without compromising medical structure.

### Patient record – documents and images in one place

A secure, cloud-based patient record that stores all medical documents and images, accessible to both physician and patient, including remotely. Additional medical documents can be uploaded, while the **MyMedicalPilot app** simplifies doctor–patient communication and access to relevant information.

## 2

## Administrative and management modules

Everything that supports medical practice—without adding operational burden

### Patient scheduling & workflow management

Smart scheduling with full patient status tracking, secure cloud access, and automated SMS or email notifications, enabling smooth and coordinated daily operations.

### True procedure cost, calculated automatically

Automatically calculates the real cost of each procedure—including staff, collaborators, and resources—providing clear, actionable insights for financial and managerial decision-making.

### Inventory and consumables management

Barcode-based tracking with real-time updates of medication and consumable stocks, enabling precise, automated control and reducing waste.

### Analytics and quality dashboards

Real-time insights into:

- clinical performance
- quality indicators
- case mix and distribution
- operational trends

Dashboards are designed for audit, accreditation, and management decisions—without manual report generation

### Integration with existing systems (EHR / HIS)

Medical Pilot integrates seamlessly with the IT systems already in use within clinics or hospitals, ensuring continuous data flow and minimizing duplicate work.

**An ecosystem that grows with you.** Medical Pilot is designed as a fully modular platform, allowing it to evolve alongside your needs—new specialties, new workflows, the same commitment to high quality, clinical safety, and meaningful time saved for physicians.

# What we've seen in practice

Medical Pilot has helped teams to:

Work more without working harder—  
**capacity increased by up to 25%.**

**Maintain consistent quality** from one case to the next, regardless of context.

**Apply quality guidelines** more easily, directly during the procedure.

**Stay accreditation-ready,** with clear indicators and easy-to-follow dashboards.

In addition, data is already structured and readily available—exactly in the format required for audits and accreditation processes.

Fewer repeated procedures, a digital workflow that integrates smoothly, and an investment that delivers rapid returns.



Used in private clinics and hospitals



**BRISC**  
MEDICAL CENTER



**MEDICAL PILOT**  
Unifying Care

**Your efficient digital assistant in the endoscopy suite.** Document what you already do. Gain time, clarity, and clinical safety.

office@medicalpilot.eu  
+40 750 211 223  
**medicalpilot.eu**