

CAMP CRAFT ACTIVITY SHEET

Contents:

Page 1- True or False Quiz.

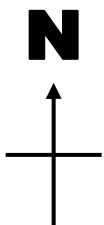
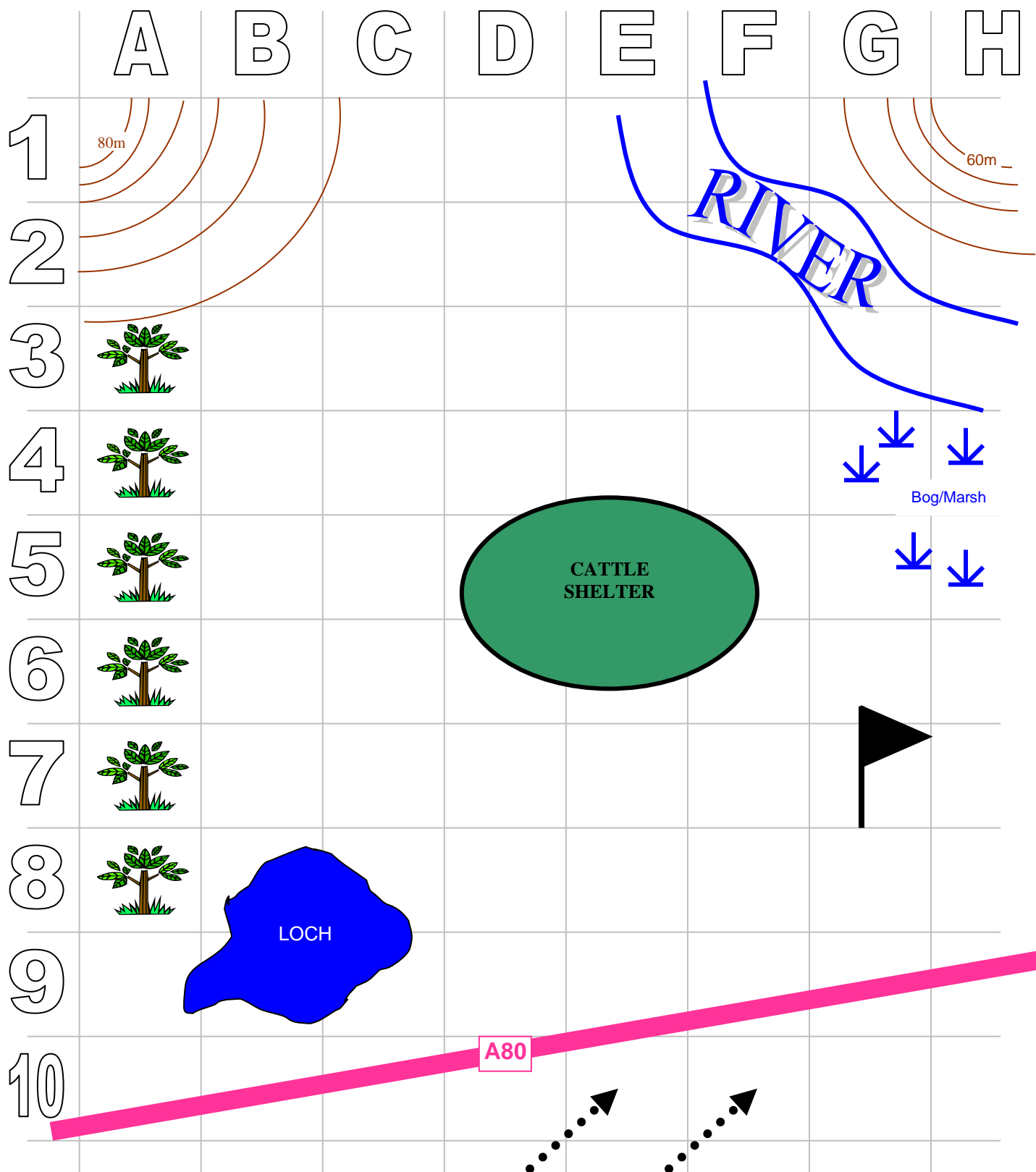
Page 2- Tent Pitching Activity.

- Answer the following Quiz Questions as True or False?

No	Question	Answer
1	Rucksacks must be less than $\frac{1}{4}$ of your bodyweight?	TRUE / FALSE
2	You can attach the tent to the outside of your rucksack?	TRUE / FALSE
3	Rucksack covers will keep the contents of your bag dry?	TRUE / FALSE
4	Plastic Juice bottles are OK for keeping drinking water in?	TRUE / FALSE
5	You have to carry all the water you need for your venture?	TRUE / FALSE
6	You can buy stuff from shops if you forget anything?	TRUE / FALSE
7	The heaviest things should be near your back?	TRUE / FALSE
8	Rollmats are waterproof so don't need putting in a plastic bag?	TRUE / FALSE
9	Sleeping bag compression sacks are waterproof?	TRUE / FALSE
10	The weight of a rucksack should be taken by tightening the hip belt?	TRUE / FALSE

WHERE WOULD YOU PITCH YOUR TENT?

THINK... boggy ground, access to river (if collecting water), shelter from wind, not **directly** under trees etc.



WIND DIRECTION