

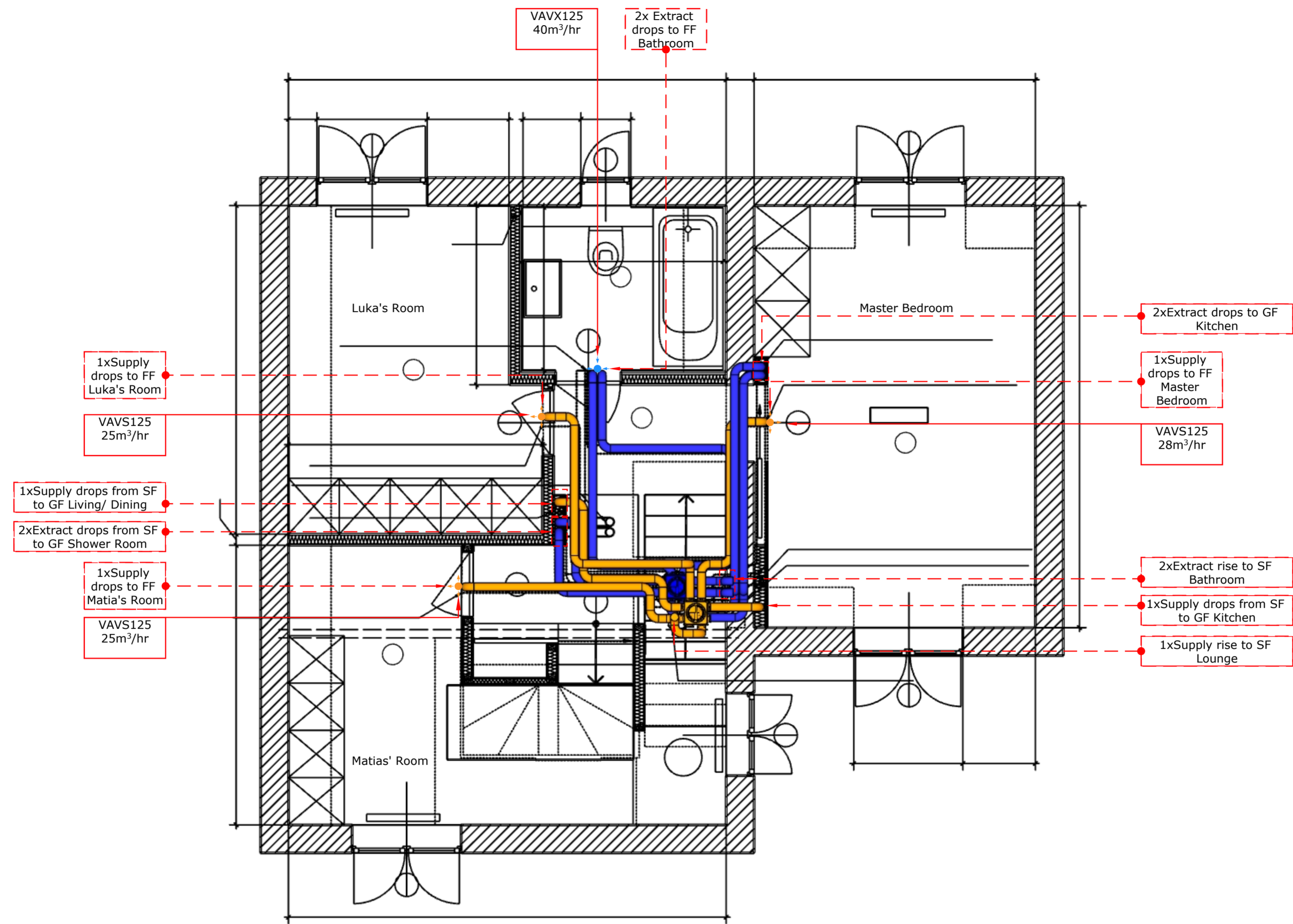
**KEY:**

	MVHR Unit Flair 325 - Rh 4/0 dims LxWxH: 750x549x650mm
	Extract Manifold 8 port manifold
	Supply Manifold 8 port manifold
	Extract Duct Semi Rigid od 90mm
	Supply Duct Semi Rigid od 90mm
	Exhaust Duct Insulated Steel ID 160mm od 210mm
	Intake Duct Insulated Steel ID 165mm od 210mm
	Air Supply Valve
	Air Extract Valve
	Ventilation Controller Brink digital Air Control

- Notes :**
- Condensate drain to be connected to MVHR Unit
  - Rubber seals to be used on all 92mm ducts.
  - Fire collars to be used on all ducts that cross a fire barrier.
  - Ensure unit is mounted level and plumb. Protect unit from plaster, dust paint etc, do not install unit until wet trades are complete.
  - Check there is complete access to the front of the MVHR via cupboard door, to enable easy replacement of filters.
  - Only use ducting specified, no flexible ducting to be used.
  - Keep open ends of ductwork sealed, to keep the inside of the ductwork clean.
  - 230V 13A spur required for power to MVHR unit.
  - 10mm gap required at the base of internal doors to allow for air transfer between rooms.

**Client:** Ruchniewicz, Dominic'  
**Project:** 3 Revelly Square  
**Date:** 08/06/2026  
**Drawing Title:** MVHR Ground Floor Plan  
**REV:** 001  
**Scale:** 1:50@A2 or 1:100 @A3  
**Drawn by:** SN

CVC Systems Ltd  
 Unit 11, Bushell Business Estate  
 Lester Way  
 Wallingford  
 OX10 9DD  
 Tel: 01491 836 666  
[www.cvcsystems.co.uk](http://www.cvcsystems.co.uk)



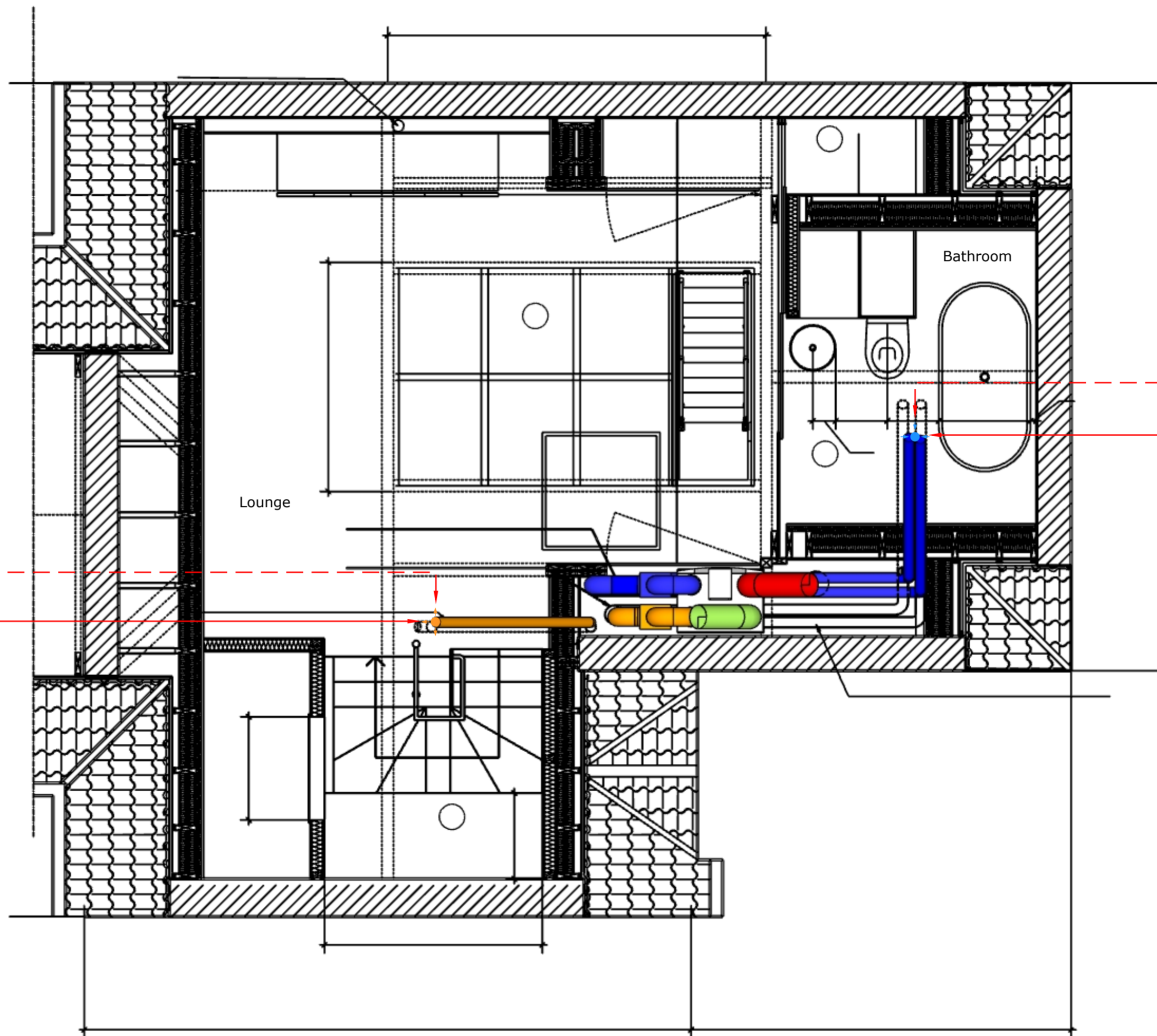
**KEY:**

	MVHR Unit Flair 325 - Rn 4/0 dims LxWxH: 750x549x650mm
	Extract Manifold 8 port manifold
	Supply Manifold 8 port manifold
	Extract Duct Semi Rigid od 90mm
	Supply Duct Semi Rigid od 90mm
	Exhaust Duct Insulated Steel ID 160mm od 210mm
	Intake Duct Insulated Steel ID 165mm od 210mm
	Air Supply Valve
	Air Extract Valve
	Ventilation Controller Brink digital Air Control

- Notes :**
- Condensate drain to be connected to MVHR Unit
  - Rubber seals to be used on all 92mm ducts.
  - Fire collars to be used on all ducts that cross a fire barrier.
  - Ensure unit is mounted level and plumb. Protect unit from plaster, dust paint etc, do not install unit until wet trades are complete.
  - Check there is complete access to the front of the MVHR via cupboard door, to enable easy replacement of filters.
  - Only use ducting specified, no flexible ducting to be used.
  - Keep open ends of ductwork sealed, to keep the inside of the ductwork clean.
  - 230V 13A spur required for power to MVHR unit.
  - 10mm gap required at the base of internal doors to allow for air transfer between rooms.

**Client:** Ruchniewicz, Dominic'  
**Project:** 3 Revely Square  
**Date:** 08/06/2026  
**Drawing Title:** MVHR First Floor Plan  
**REV:** 001  
**Scale:** 1:50@A2 or 1:100 @A3  
**Drawn by:** SN

CVC Systems Ltd  
 Unit 11, Bushell Business Estate  
 Lester Way  
 Wallingford  
 OX10 9DD  
 Tel: 01491 836 666  
[www.cvcsystems.co.uk](http://www.cvcsystems.co.uk)



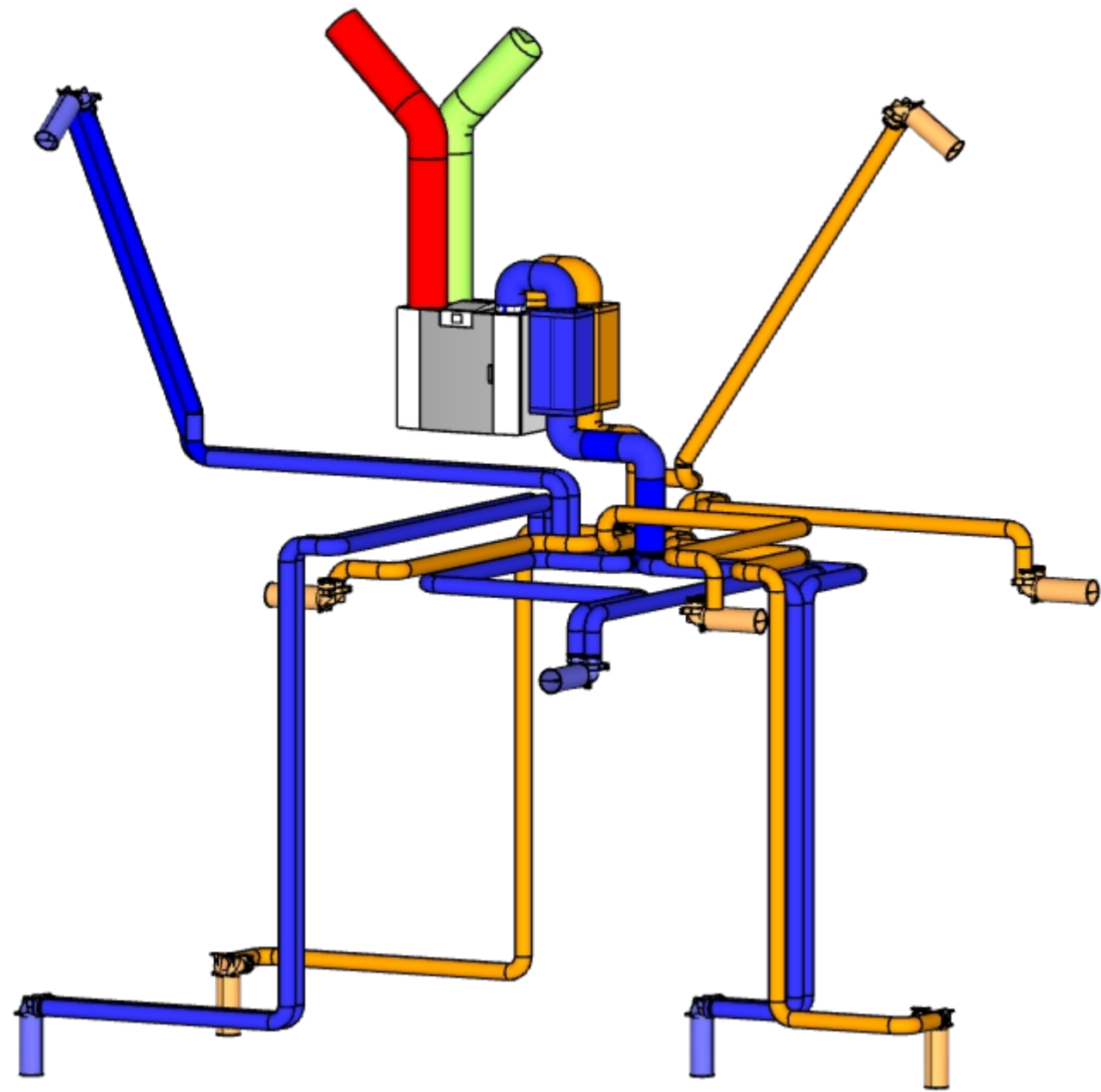
**KEY:**

	MVHR Unit Flair 325 - Rh 4/0 dims LxWxH: 750x549x650mm
	Extract Manifold 8 port manifold
	Supply Manifold 8 port manifold
	Extract Duct Semi Rigid od 90mm
	Supply Duct Semi Rigid od 90mm
	Exhaust Duct Insulated Steel ID 160mm od 210mm
	Intake Duct Insulated Steel ID 165mm od 210mm
	Air Supply Valve
	Air Extract Valve
	Ventilation Controller Brink digital Air Control

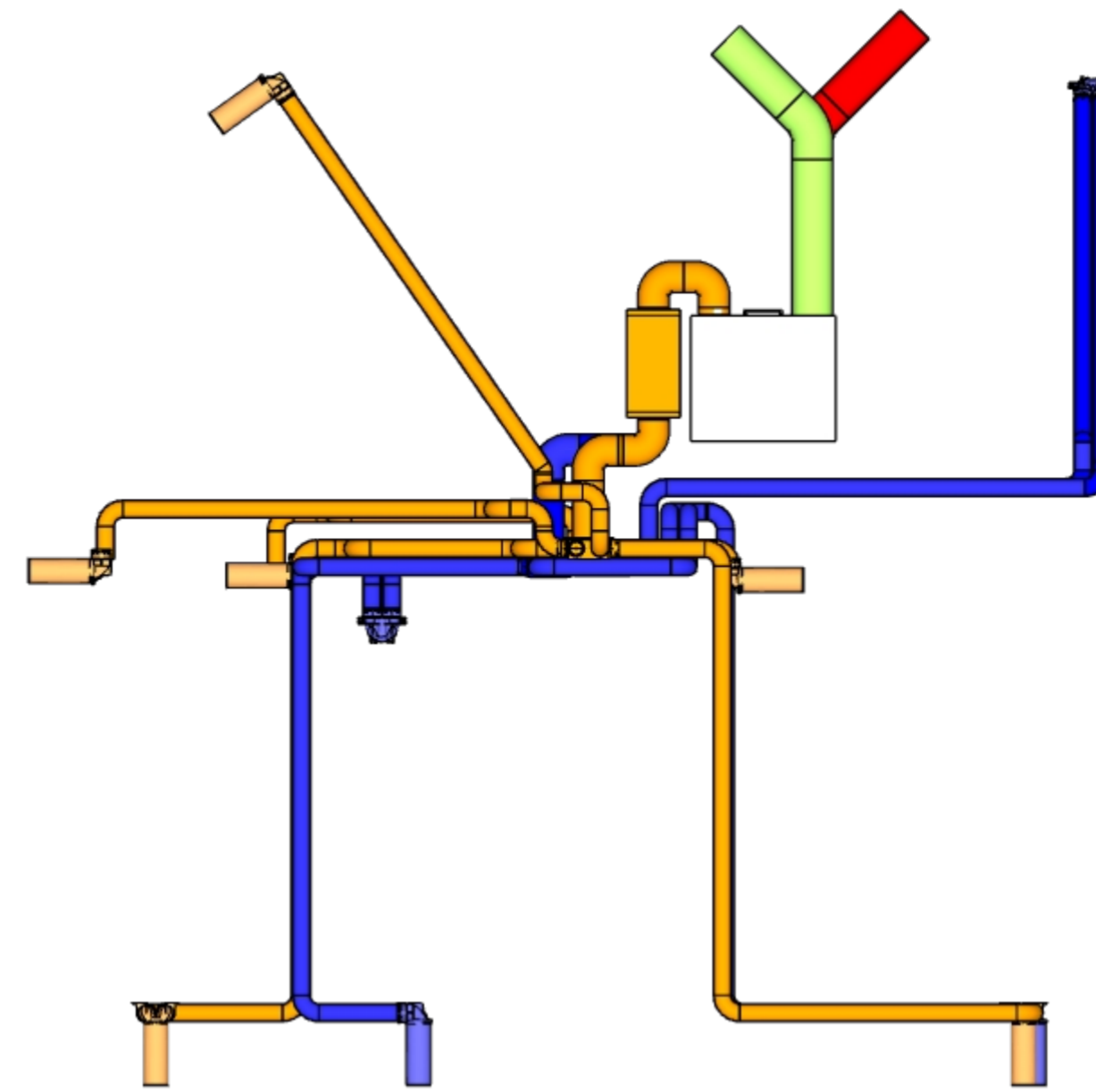
- Notes :**
- Condensate drain to be connected to MVHR Unit
  - Rubber seals to be used on all 92mm ducts.
  - Fire collars to be used on all ducts that cross a fire barrier.
  - Ensure unit is mounted level and plumb. Protect unit from plaster, dust paint etc, do not install unit until wet trades are complete.
  - Check there is complete access to the front of the MVHR via cupboard door, to enable easy replacement of filters.
  - Only use ducting specified, no flexible ducting to be used.
  - Keep open ends of ductwork sealed, to keep the inside of the ductwork clean.
  - 230V 13A spur required for power to MVHR unit.
  - 10mm gap required at the base of internal doors to allow for air transfer between rooms.

**Client:** Ruchniewicz, Dominic'  
**Project:** 3 Revelly Square  
**Date:** 08/06/2026  
**Drawing Title:** MVHR Second Floor Plan  
**REV:** 001  
**Scale:** 1:50@A2 or 1:100 @A3  
**Drawn by:** SN

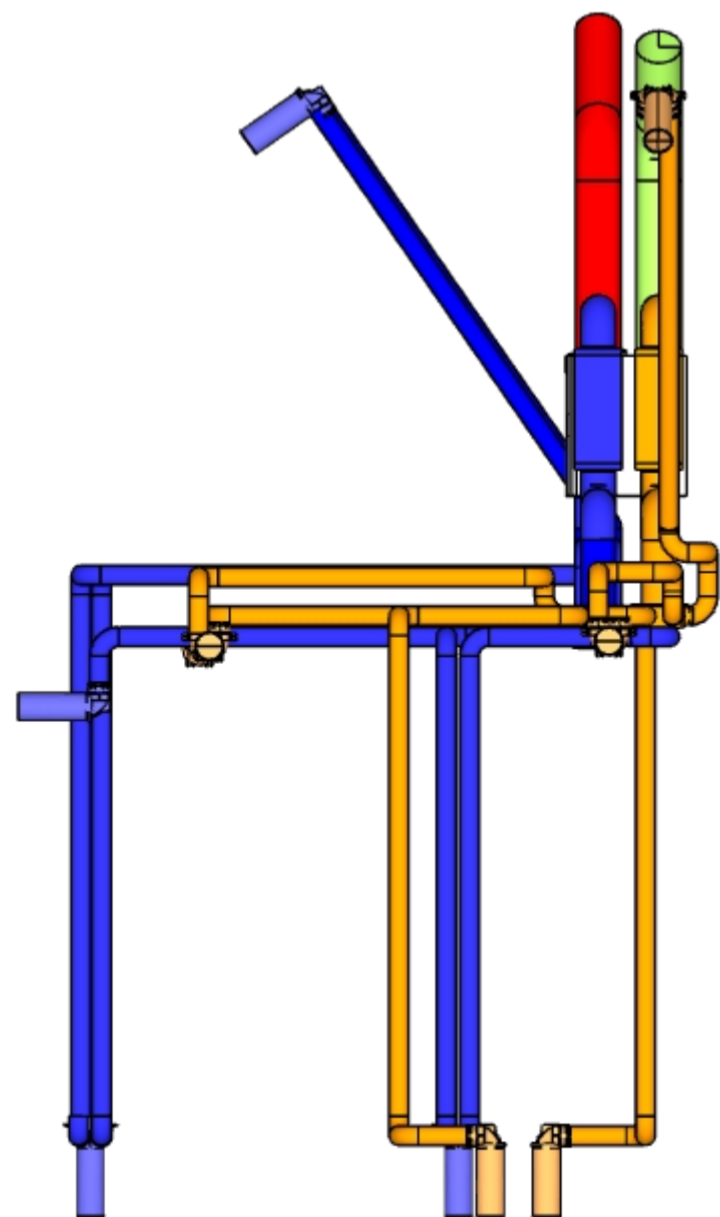
CVC Systems Ltd  
 Unit 11, Bushell Business Estate  
 Lester Way  
 Wallingford  
 OX10 9DD  
 Tel: 01491 836 666  
[www.cvcsystems.co.uk](http://www.cvcsystems.co.uk)



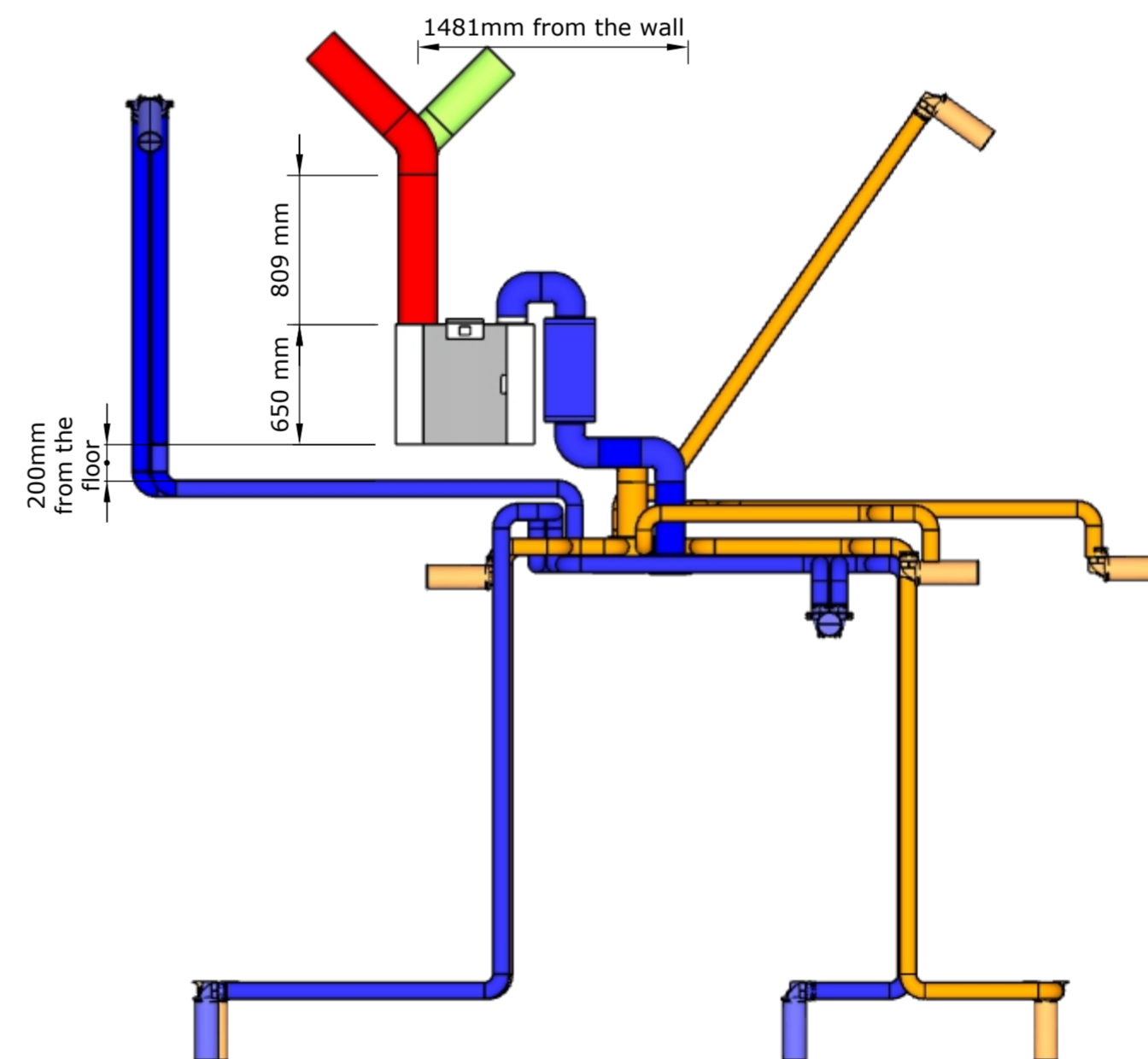
3D View



Elevation 1



3D View



Elevation 1

**KEY:**

	MVHR Unit Flair 325 - Rn 4/0 dims LxWxH: 750x549x650mm
	Extract Manifold 8 port manifold
	Supply Manifold 8 port manifold
	Extract Duct Semi Rigid od 90mm
	Supply Duct Semi Rigid od 90mm
	Exhaust Duct Insulated Steel ID 160mm od 210mm
	Intake Duct Insulated Steel ID 165mm od 210mm
	Air Supply Valve
	Air Extract Valve
	Ventilation Controller Brink digital Air Control

- Notes :**
- Condensate drain to be connected to MVHR Unit
  - Rubber seals to be used on all 92mm ducts.
  - Fire collars to be used on all ducts that cross a fire barrier.
  - Ensure unit is mounted level and plumb. Protect unit from plaster, dust paint etc, do not install unit until wet trades are complete.
  - Check there is complete access to the front of the MVHR via cupboard door, to enable easy replacement of filters.
  - Only use ducting specified, no flexible ducting to be used.
  - Keep open ends of ductwork sealed, to keep the inside of the ductwork clean.
  - 230V 13A spur required for power to MVHR unit.
  - 10mm gap required at the base of internal doors to allow for air transfer between rooms.

**Client:** Ruchniewicz, Dominic'  
**Project:** 3 Revely Square  
**Date:** 08/06/2026  
**Drawing Title:** MVHR Elevation and 3D  
**REV:** 001  
**Scale:** 1:50@A2 or 1:100 @A3  
**Drawn by:** SN

**CVC**  
 CVC Systems Ltd  
 Unit 11, Bushell Business Estate  
 Lester Way  
 Wallingford  
 OX10 9DD  
 Tel: 01491 836 666  
[www.cvcsystems.co.uk](http://www.cvcsystems.co.uk)



# Brink Flair 325 (Plus)

The Flair 325 and the Flair 325 Plus is a ventilation unit for the balanced ventilation of dwellings with heat recovery.

**Features:**

- Maximum capacity 325 m<sup>3</sup>/h
- High return plastic heat exchanger
- Filters ISO Coarse 60%
- Modular electric preheater
- Automatic bypass valve
- Touchscreen
- Adjustable air quantity
- Filter indication on the appliance and the possibility of a filter indication on the multiple switch
- An intelligent frost protection including modular preheater
- Low sound level
- Constant flow control

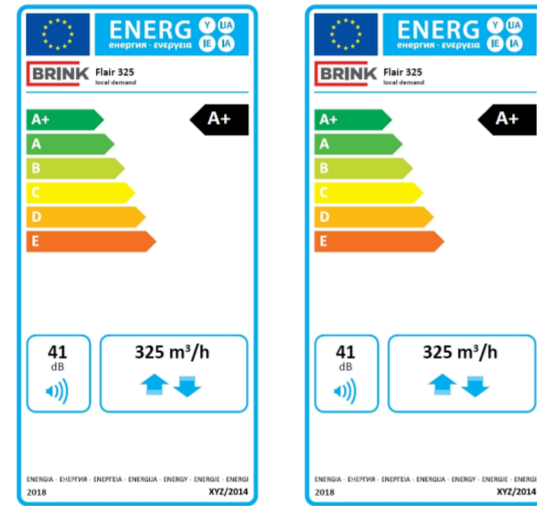
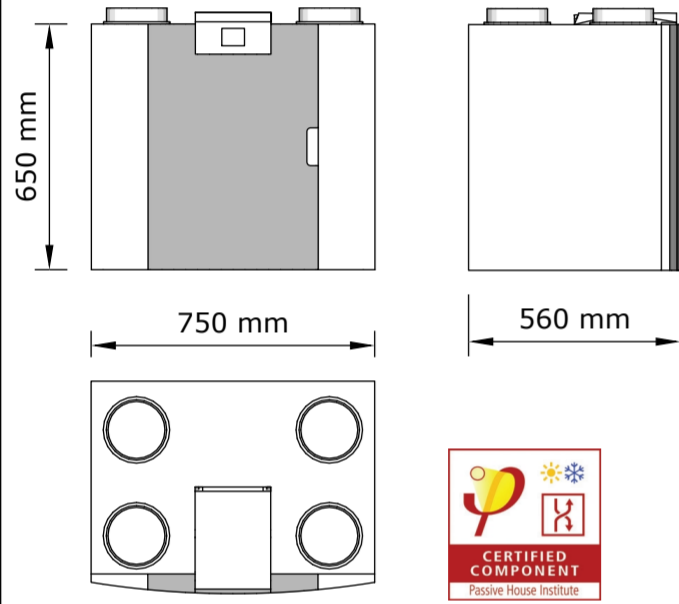


## Dimensions (mm)

## SAP Results

Left-hand version	Right-hand version
1 - To outside	1 - To dwelling
2 - From outside	2 - From dwelling
3 - To dwelling	3 - To outside
4 - From dwelling	4 - From outside

K+n wet rooms	SFP (W/l/s) 2009	Efficiency (%) 2009	SFP (W/l/s) 2012	Efficiency (%) 2012
n=1	0.61	93.00%	0.55	92%
n=2	0.51	92.00%	0.52	92%
n=3	0.5	92.00%	0.55	91%
n=4	0.53	91.00%	0.63	90%
n=5	0.56	91.00%	0.73	90%
n=6	0.62	90.00%	0.86	89%
n=7	0.7	90.00%	1.00	89%



## Brink Home - Service App

In the past, when a fault developed with an MVHR unit, the fault code was often difficult to interpret especially if the manual for the unit had been mislaid. The Brink Home App now allows the customer (or service personnel) to identify the fault easily and rectify it. The App also allows access to a list of dealers and installers.

**The advantages at a glance**

- Optimal use of your ventilation system with this SMART solution
- Check the status of your ventilation system at any time
- Give the installer instant access and let him watch directly for more efficient service
- Remote control your system from home or when you are on your way home
- Know how your system is working via the App on your Smartphone or tablet, or with the portal on your PC.
- Servicing is easier as the installer can make a remote connection to the unit.
- Voice activated control via Alexa.



### Flair 325 (Plus)

Supply Voltage	230V/50Hz									
Dimensions (wxhxd) (mm)	750 x 650 x 560									
Duct diameter (mm)	160									
External diameter condensate discharge (mm)	32									
Weight (kg)	37									
Filter class	ISO Coarse 60% (ISO ePM1.0 for the air supply optional)									
Fan Setting (factory setting)	0	1	2	3	max					
Factory Setting (m <sup>3</sup> /hr)	50	100	150	250	325					
Permissible resistance of duct system (Pa)	2	6	9	24	21	53	59	148	100	250
Rated power (excl. preheater) (W)	6.1	6.6	7.9	10.3	15.1	21.0	46.6	69.1	87.5	144.5
Rated current (excl. preheater) (A)	0.08	0.08	0.09	0.11	0.15	0.21	0.41	0.59	0.73	1.07
Max. rated current (incl. preheater switched on) (A)	6									
Cos	0.341	0.343	0.389	0.394	0.430	0.439	0.492	0.507	0.521	0.542

### Sound power

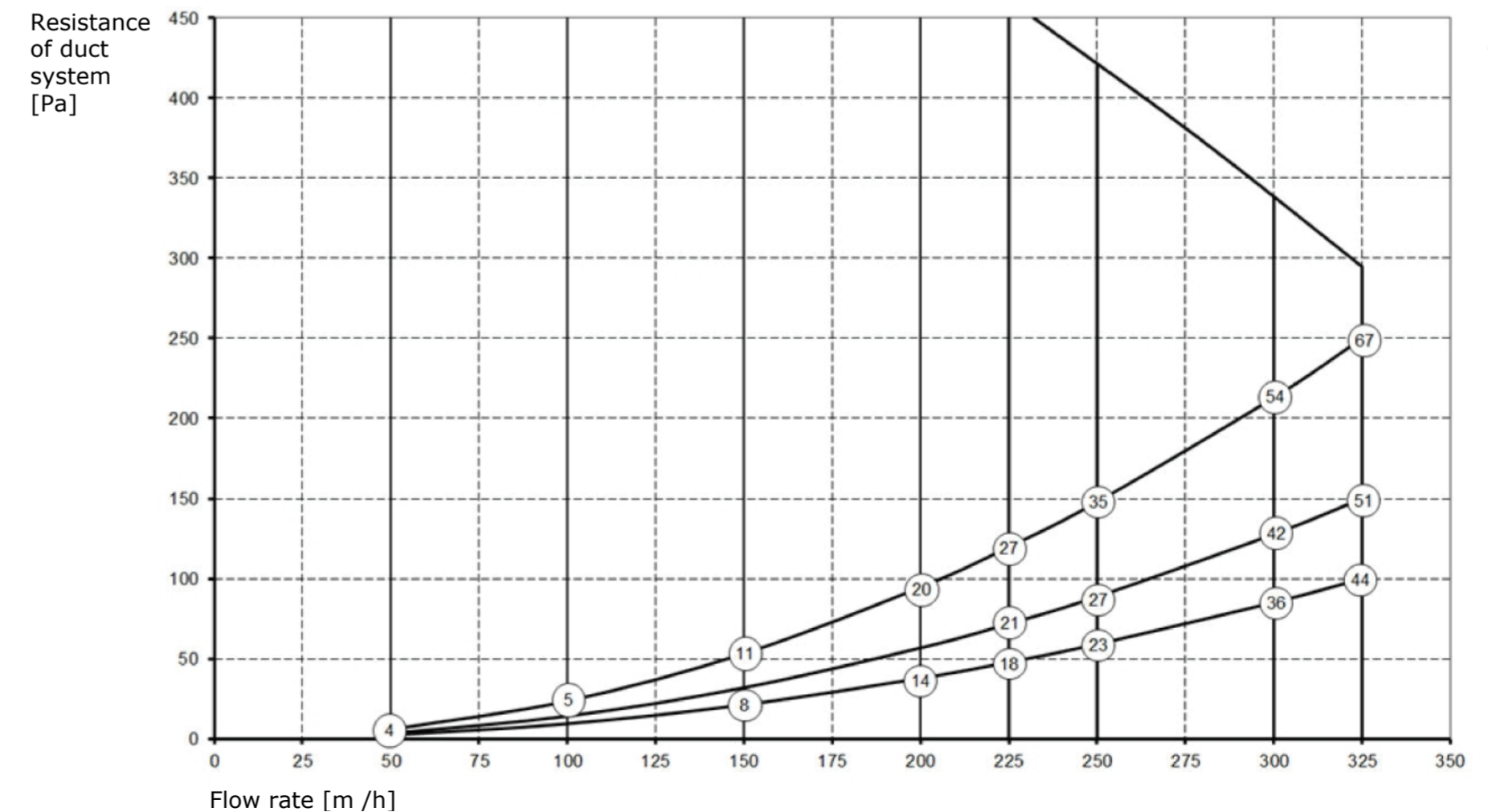
(m <sup>3</sup> /h)	p (Pa)	Filter	63	125	250	500	1000	2000	4000	8000	Total Lw (dB)	Total weighed (dB(A))
100	25	ISO Coarse 60%	56.0	53.1	46.2	42.3	35.1	23.6	10.3	7.2	58.2	43.5
150	25	ISO Coarse 60%	61.6	55.2	49.5	47.4	41.5	33.5	20.5	11.2	62.9	48.5
200	50	ISO Coarse 60%	61.2	60.3	52.5	48.8	43.0	35.3	24.5	12.1	64.3	51.0
228	50	ISO Coarse 60%	66.1	58.4	60.3	52.8	47.8	42.4	31.9	17.5	67.9	55.0
250	100	ISO Coarse 60%	62.8	60.9	62.2	55.1	49.9	43.8	35.1	22.6	67.2	57.0
325	50	ISO Coarse 60%	66.2	59.8	60.2	54.8	49.6	44.7	34.9	22.1	68.2	56.0
	75	ISO Coarse 60%	67.0	60.7	60.2	55.6	50.5	46.1	36.9	23.1	68.9	57.0
	100	ISO Coarse 60%	67.1	62.5	66.4	58.0	53.3	49.3	40.9	28.3	70.9	61.0
	150	ISO Coarse 60%	65.6	64.4	67.1	58.6	53.7	48.3	40.8	29.9	71.0	61.5
	100	ISO Coarse 60%	68.8	66.2	75.8	61.3	57.2	54.4	46.9	35.8	77.2	69.5
	150	ISO Coarse 60%	70.1	66.5	73.6	62.9	58.3	55.4	47.7	37.2	76.1	68.5

### Sound power

(m <sup>3</sup> /h)	p (Pa)	Filter	63	125	250	500	1000	2000	4000	8000	Total Lw (dB)	Total weighed (dB(A))
100	25	ISO Coarse 60%	54.2	43.5	36.2	24.2	15.1	8.6	0.3	5.6	54.6	32.0
150	25	ISO Coarse 60%	65.9	49.2	43.8	29.2	21.4	15.5	5.3	12.1	66.0	39.5
200	50	ISO Coarse 60%	53.8	49.7	41.6	31.1	23.3	18.3	7.0	5.5	55.4	37.5
228	50	ISO Coarse 60%	64.1	50.6	54.8	36.1	27.9	24.0	12.0	7.4	64.7	45.5
250	100	ISO Coarse 60%	55.8	55.9	49.1	38.9	30.2	26.5	18.6	8.0	59.3	44.0
325	50	ISO Coarse 60%	65.6	55.3	55.5	38.1	29.9	26.5	17.3	17.4	66.3	47.5
	75	ISO Coarse 60%	64.9	51.0	54.6	37.6	31.1	28.3	17.5	9.9	65.4	46.0
	100	ISO Coarse 60%	63.0	54.8	56.5	39.9	33.6	30.7	21.2	9.7	64.4	49.0
	150	ISO Coarse 60%	61.0	58.8	54.4	42.8	35.2	31.5	24.0	10.4	63.6	48.5
	100	ISO Coarse 60%	67.7	61.8	60.6	46.3	37.7	36.0	28.8	21.6	69.3	54.0
	150	ISO Coarse 60%	63.4	58.6	60.8	44.8	38.4	36.5	27.9	13.8	66.2	54.5

### Sound power

(m <sup>3</sup> /h)	p (Pa)	Filter	63	125	250	500	1000	2000	4000	8000	Total Lw (dB)	Total weighed (dB(A))
100	25	ISO Coarse 60%	37.2	33.4	31.9	24.9	16.3	14.4	4.5	4.9	39.7	27.0
150	25	ISO Coarse 60%	42.0	42.1	37.9	30.0	23.9	20.4	9.1	14.5	46.0	33.3
200	50	ISO Coarse 60%	37.8	41.6	38.3	31.6	25.2	22.7	10.6	8.2	44.6	34.0
228	50	ISO Coarse 60%	45.6	44.5	47.1	35.4	29.5	27.9	16.8	17.0	50.8	40.4
250	100	ISO Coarse 60%	42.4	48.4	44.6	38.6	32.6	31.0	19.8	12.4	51.0	41.0
325	50	ISO Coarse 60%	42.4	45.8	47.5	37.7	31.8	30.5	20.3	19.1	50.8	41.6
	75	ISO Coarse 60%	45.3	41.4	49.9	38.1	32.3	31.5	18.9	11.7	51.9	43.0
	100	ISO Coarse 60%	44.5	46.7	51.9	40.9	35.3	35.5	23.8	14.4	54.0	45.5
	150	ISO Coarse 60%	45.0	52.5	51.3	40.8	36.7	34.8	25.5	16.6	55.6	45.7
	100	ISO Coarse 60%	48.1	52.9	55.1	45.3	39.6	40.1	31.8	26.0	58.1	49.5
	150	ISO Coarse 60%	48.6	47.4	55.1	45.0	39.8	40.4	30.6	22.7	57.0	49.3



**Note:** The stated value in the circle is the capacity (in Watt) per fan

## Air Excellent air distribution system....

The Air Excellent air distribution system is ductwork designed to distribute air for central mechanical ventilation systems with heat recovery used to ventilate residential and small commercial buildings.

### The advantages at a glance:

- Low(er) pressure loss than traditional systems
- Installation:
  - A plastic duct on a roll is easy and quick to cut to length and bend around obstacles
  - Mechanical Connections (i.e. no duct tape) means quick, clean and consistent quality of installation
- Quick, quality and consistent commissioning using the configuration tool and airflow restrictor rings
- Insulation in air distribution boxes reduces noise transfer to and between rooms
- Easy and quick maintenance
- Mix and match duct types
- Low duct height for in-wall and/or screed floor application
- Anti-static and anti-bacterial properties
- No migration of harmful substances



### Semi Rigid Radial duct sizes

AE35sc oval = 50 x 102 AE34c round = 75mm dia.

AE55sc oval = 60 x 132 AE48c round = 92mm dia



90° bends and adapters for mixing circular and semi-circular ductwork



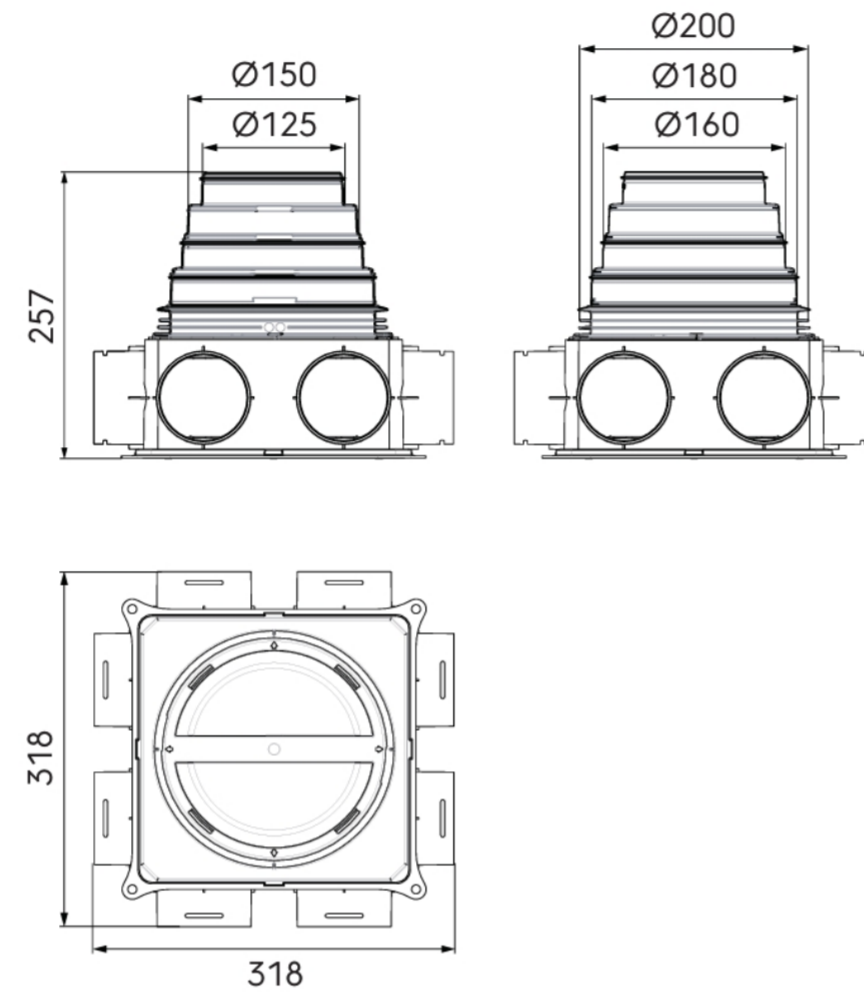
Seals and click rings for airtight connections between ductwork components



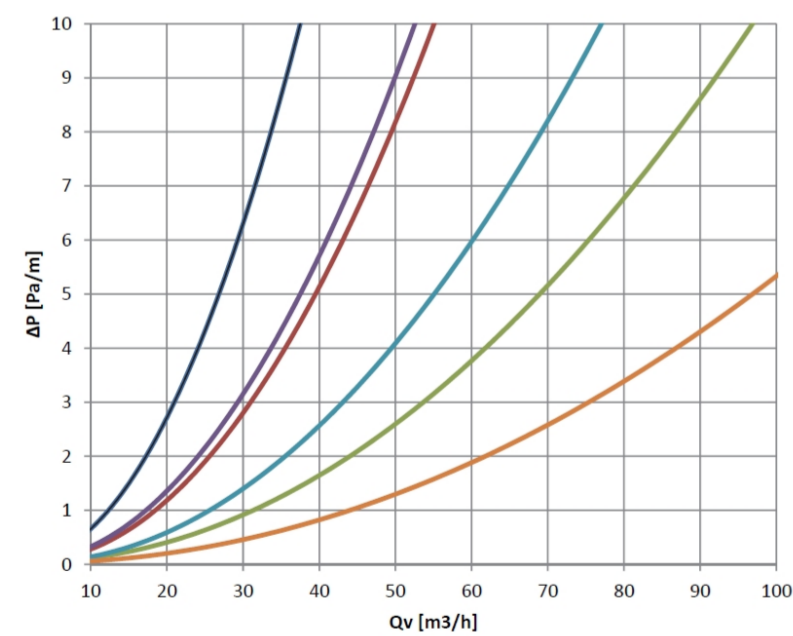
Air flow restrictor



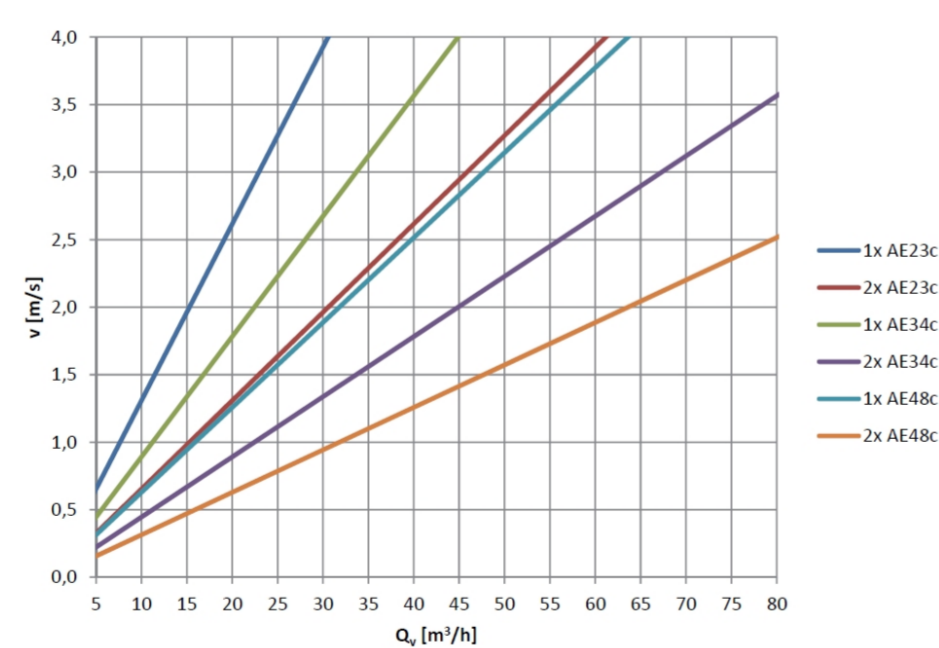
90° and 180° valve and grill adapters



### Pressure loss as a function of flow rate



### Air velocity as a function of flow rate

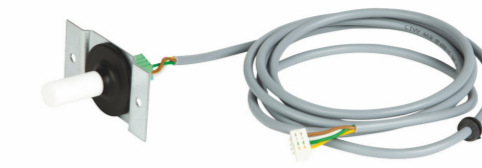


## Controls



### Touch Control

The Brink Control allows the user to manually control the unit speed, offers a programmed operation facility and displays error codes.



### RH Sensor

The RH sensor detects a sudden rise of the relative humidity in a room as result of cooking or showering, for example.

Is supplied with 2m dedicated cable, one end of which must be connected to the PCB within the MVHR unit. The sensor is fitted to the extract duct.

## Attenuators



### LRCA

Straight silencer with circular connection and low installation height.

LRCA dimensions make it particularly suitable for installation above suspended ceilings or where space is otherwise limited.

Fulfils tightness class C.

Tested according to ISO 7235 standard.

Ød <sub>1</sub> [mm]	l [mm]	a [mm]	b [mm]	Insertion loss [dB] for centre frequency [Hz]								m [kg]
				63	125	250	500	1k	2k	4k	8k	
100	500	210	158	8	12	12	23	44	45	30	18	3,2
100	1000	210	158	17	18	25	41	50	50	50	32	5,6
125	500	239	181	8	9	11	21	36	36	23	14	3,9
125	1000	239	181	17	14	21	38	50	50	45	23	6,9
150	500	275	218	7	7	11	19	31	29	16	10	4,4
150	1000	275	218	11	11	17	35	49	50	27	16	7,9
160	500	275	218	6	7	10	18	28	24	13	10	4,4
160	1000	275	218	9	10	19	36	50	49	24	17	7,9
200	500	328	254	5	6	9	16	22	17	7	7	5,7
200	1000	328	254	11	13	15	30	46	36	14	12	10,1

## Internal terminals



### Valve for extract air MW124

Designed for wall or ceiling mounting.



### Valve for supply air MW125

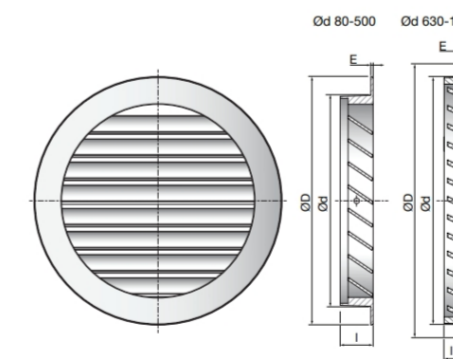
Designed for ceiling mounting. Equipped with a removable blanking-off sector plate for preventing the air flow in a desired direction.

## External Terminals



### YGC

Valve for outdoor air intake and exhaust air discharge. Designed with a fixed louvre



Ød nom	ØD [mm]	l [mm]	E [mm]	A <sub>f</sub> (m <sup>2</sup> )	Weight [kg]	
80	*	98	10,0	3,5	0,003	0,10
100	*	123	19,5	2,5	0,006	0,13
125	*	149	19,5	2,5	0,009	0,18
150	*	173	19,5	2,5	0,013	0,23
160	*	183	19,0	3,0	0,015	0,27
200	*	223	19,0	3,0	0,024	0,47