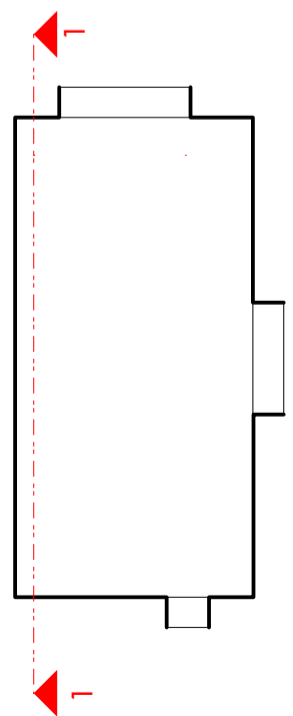
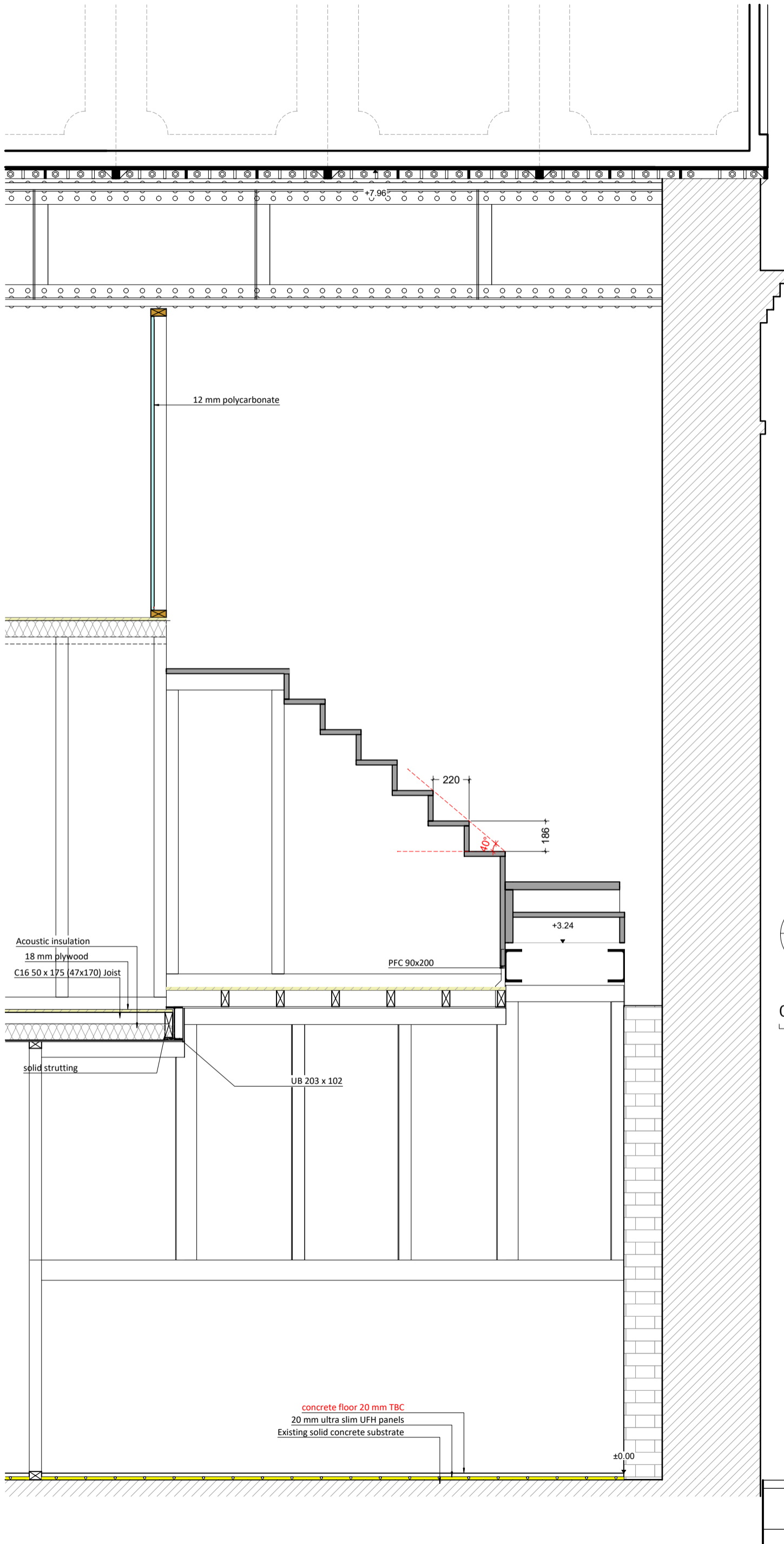


1 Section 1-1 (Rear)  
3011 scale 1:25 @A3

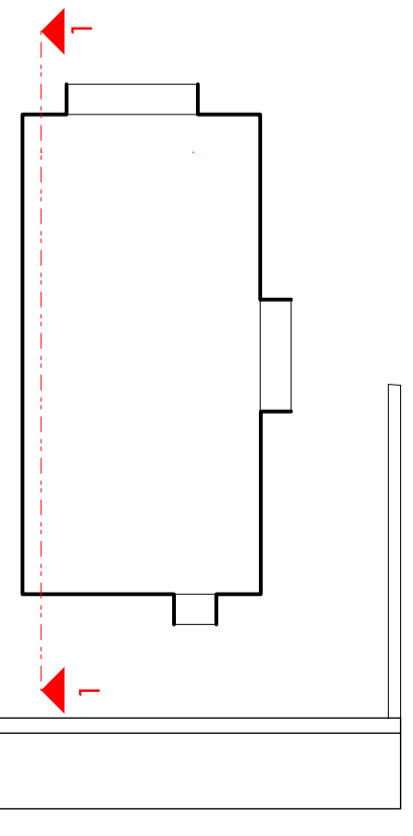
0 0.5 1 m

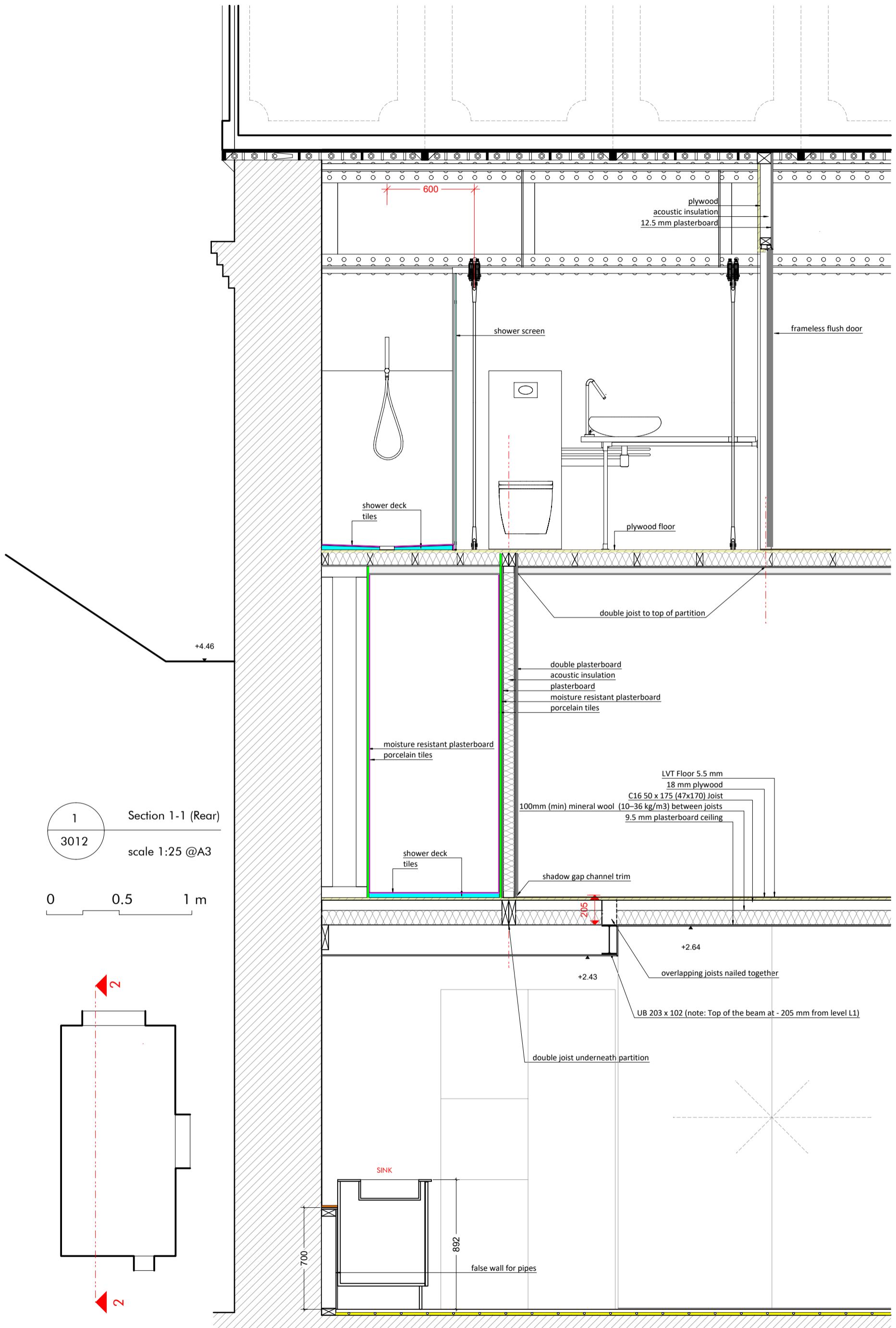




2 Section 1-1 (Front)  
3011 scale 1:25 @A3

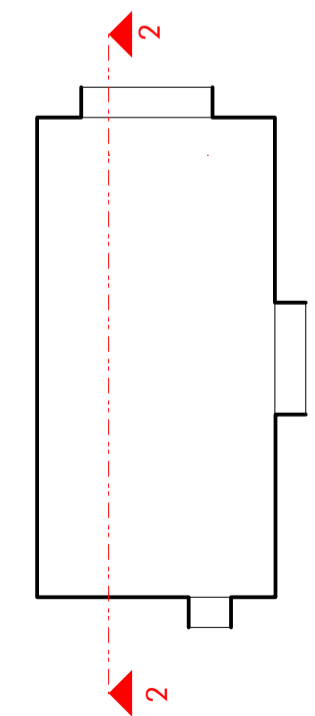
0 0.5 1 m

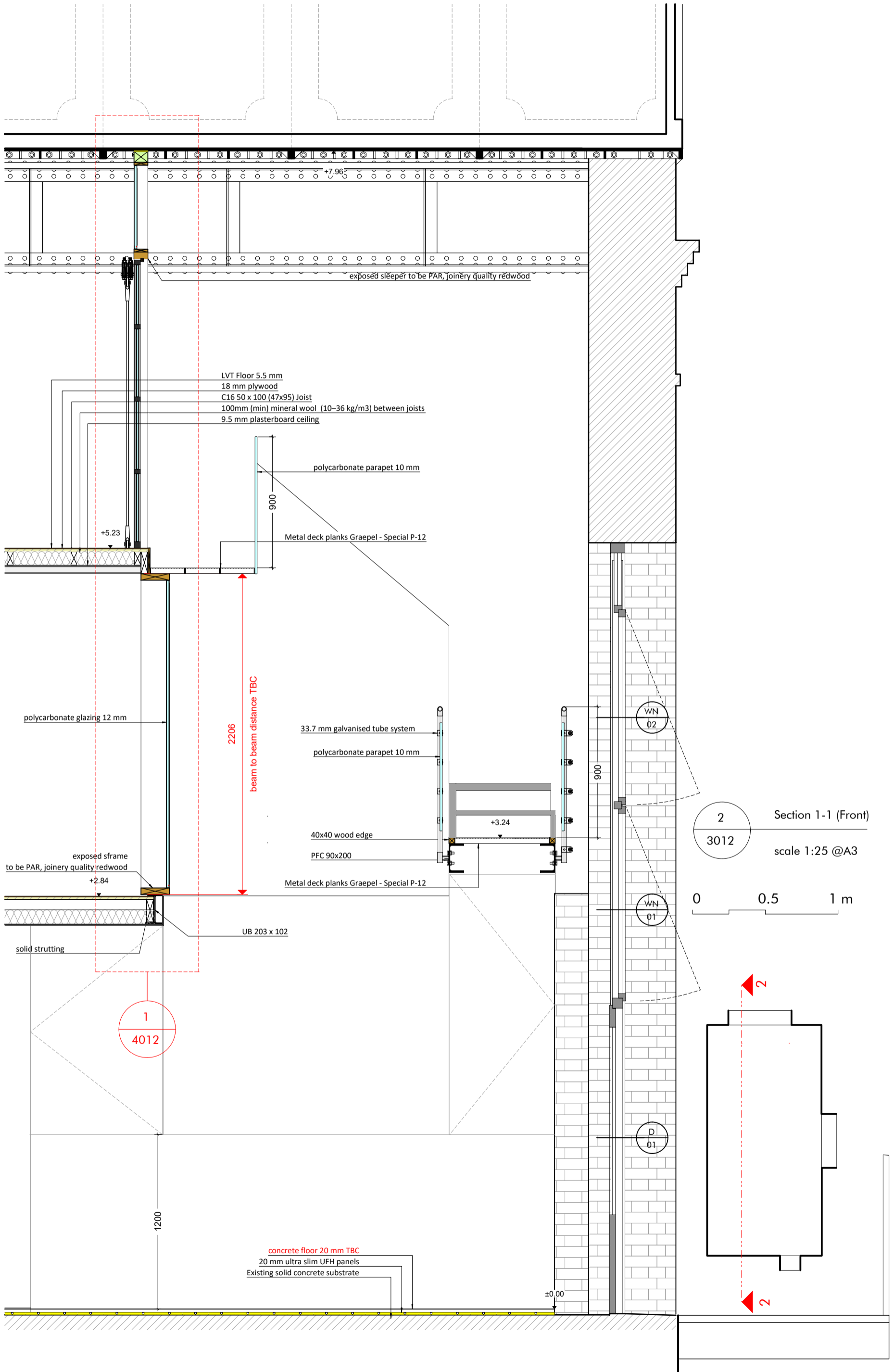


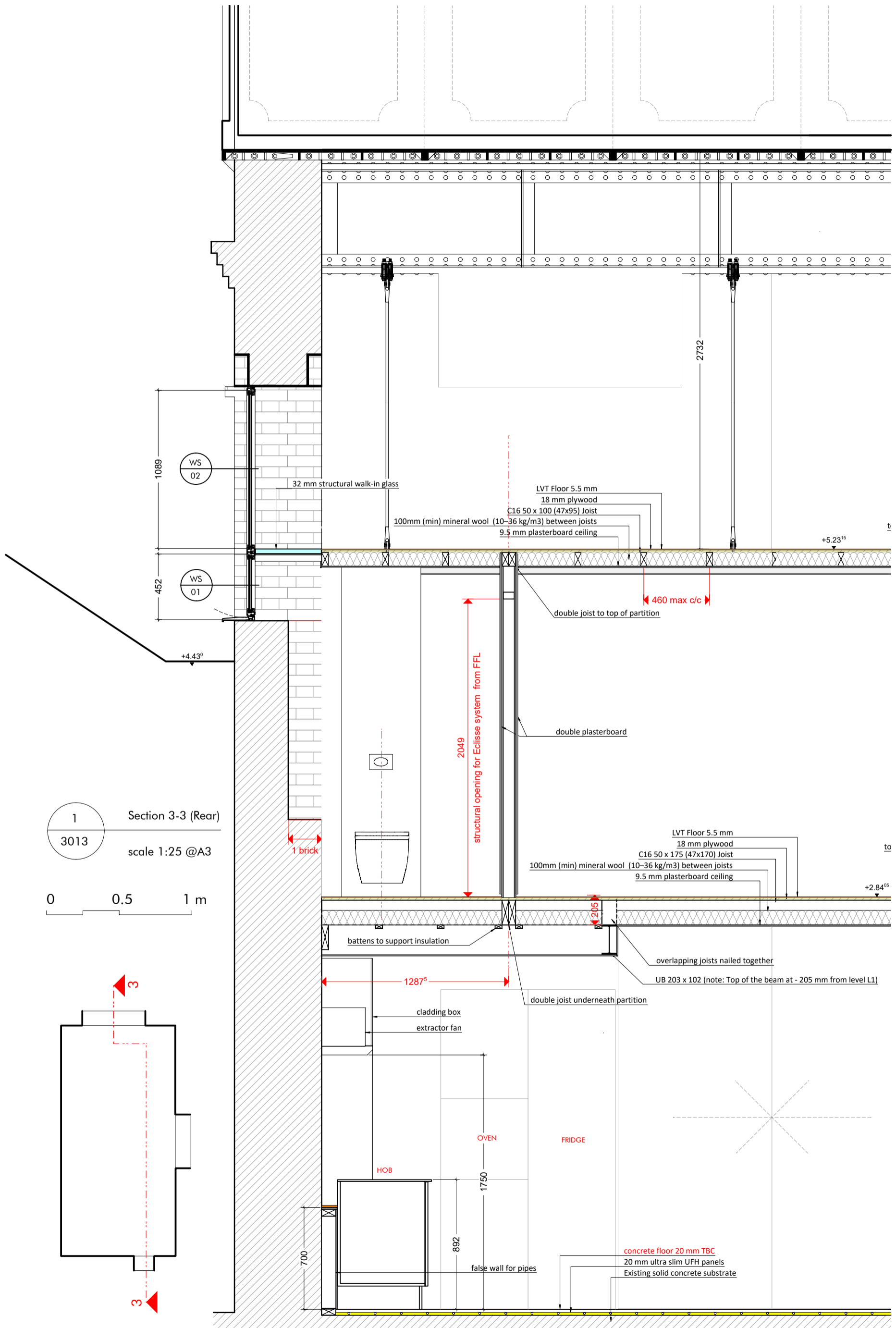


1 Section 1-1 (Rear)  
3012 scale 1:25 @A3

0 0.5 1 m

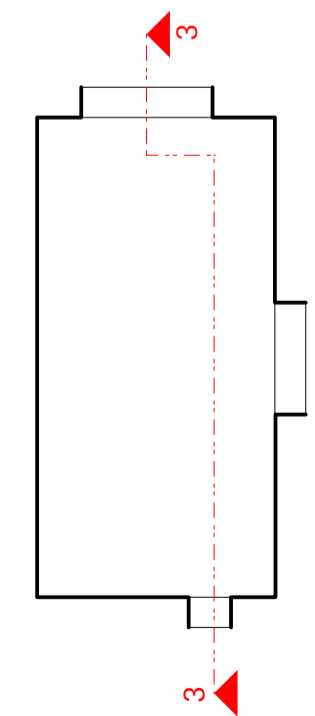


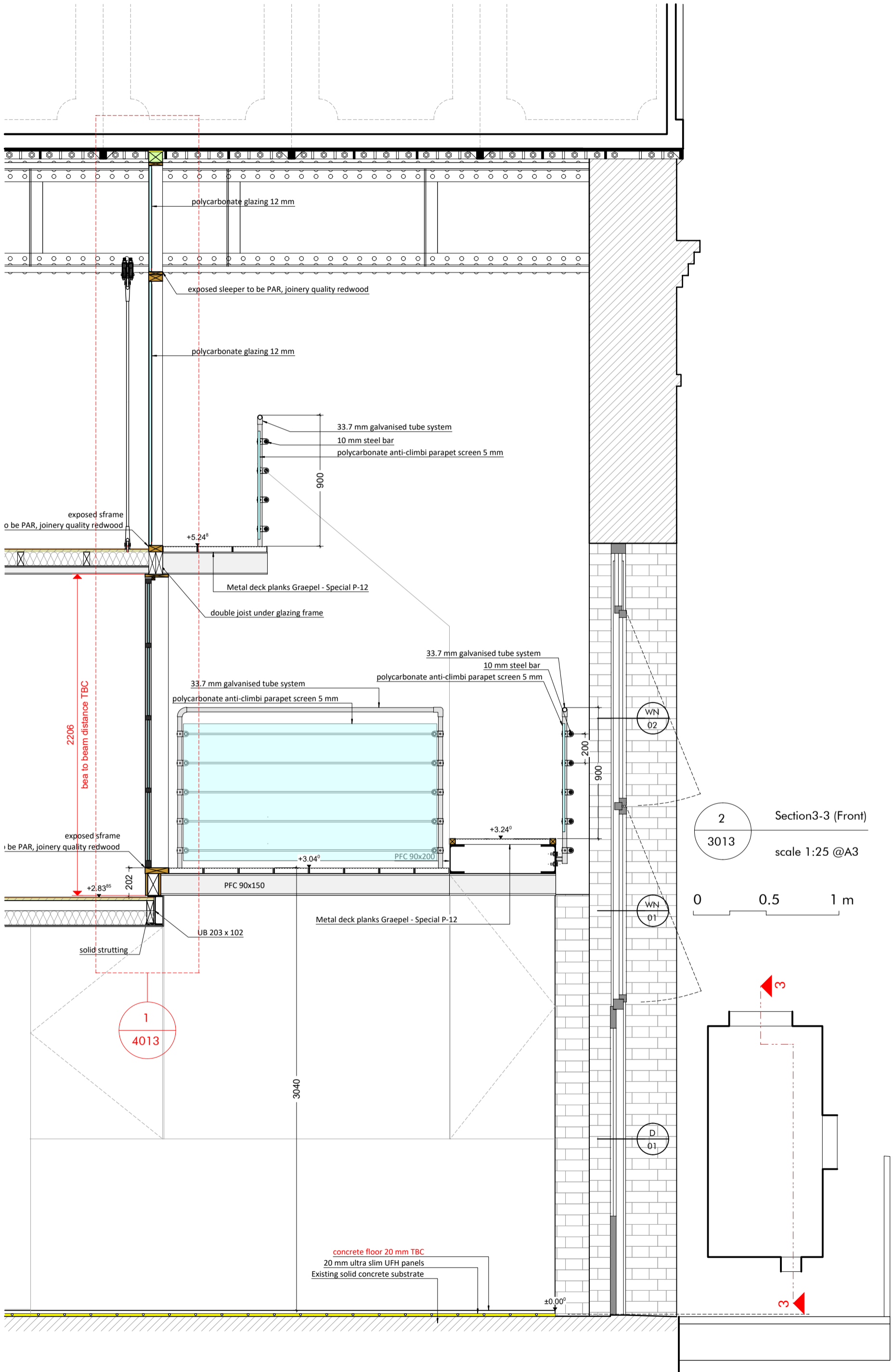


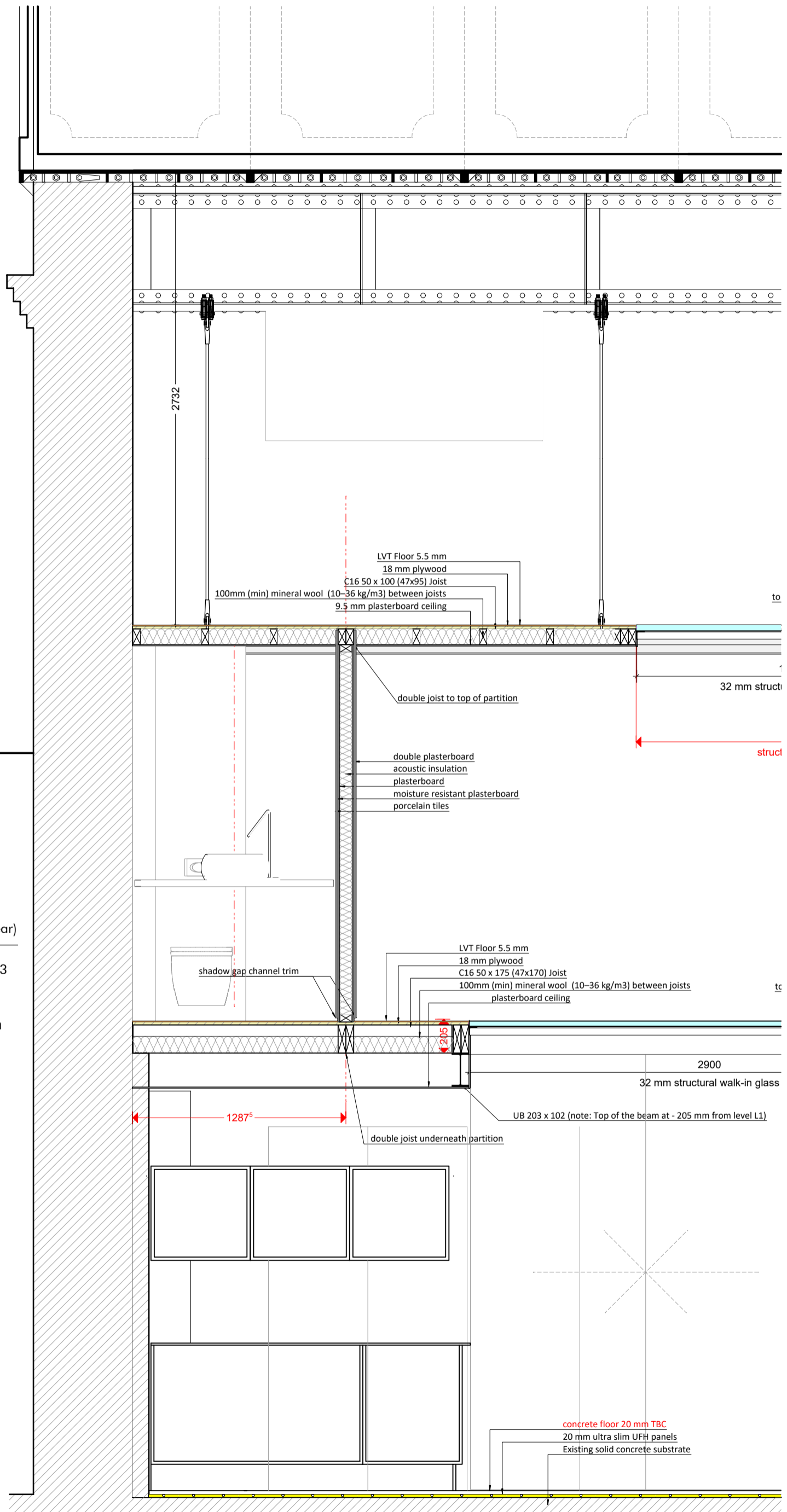


1 Section 3-3 (Rear)  
3013 scale 1:25 @A3

0 0.5 1 m

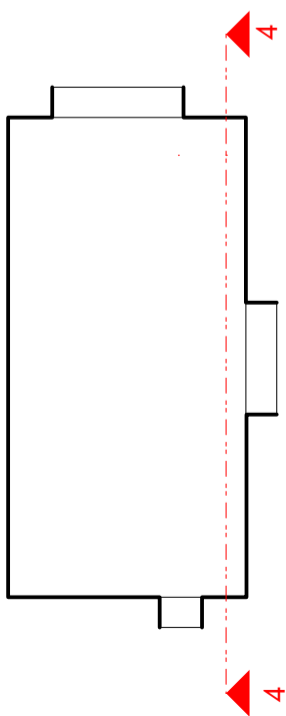


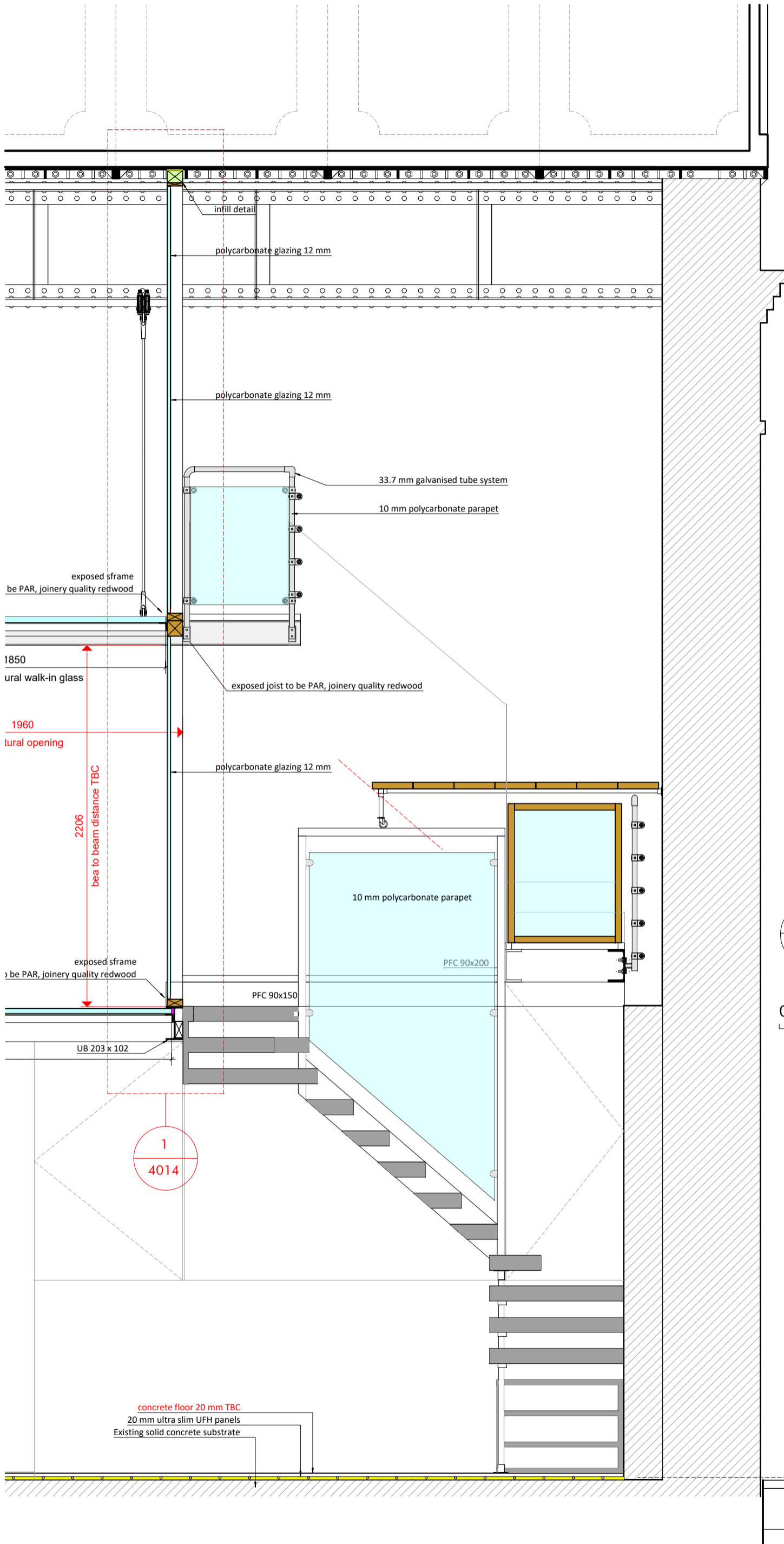




1 Section 4-4 (Rear)  
3014 scale 1:25 @A3

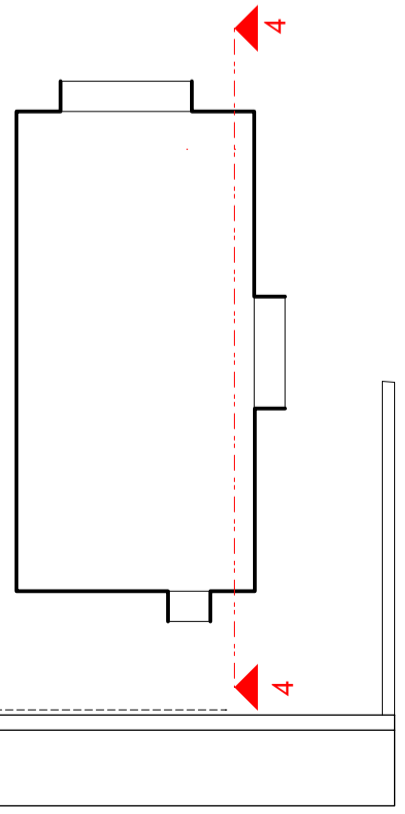
0 0.5 1 m



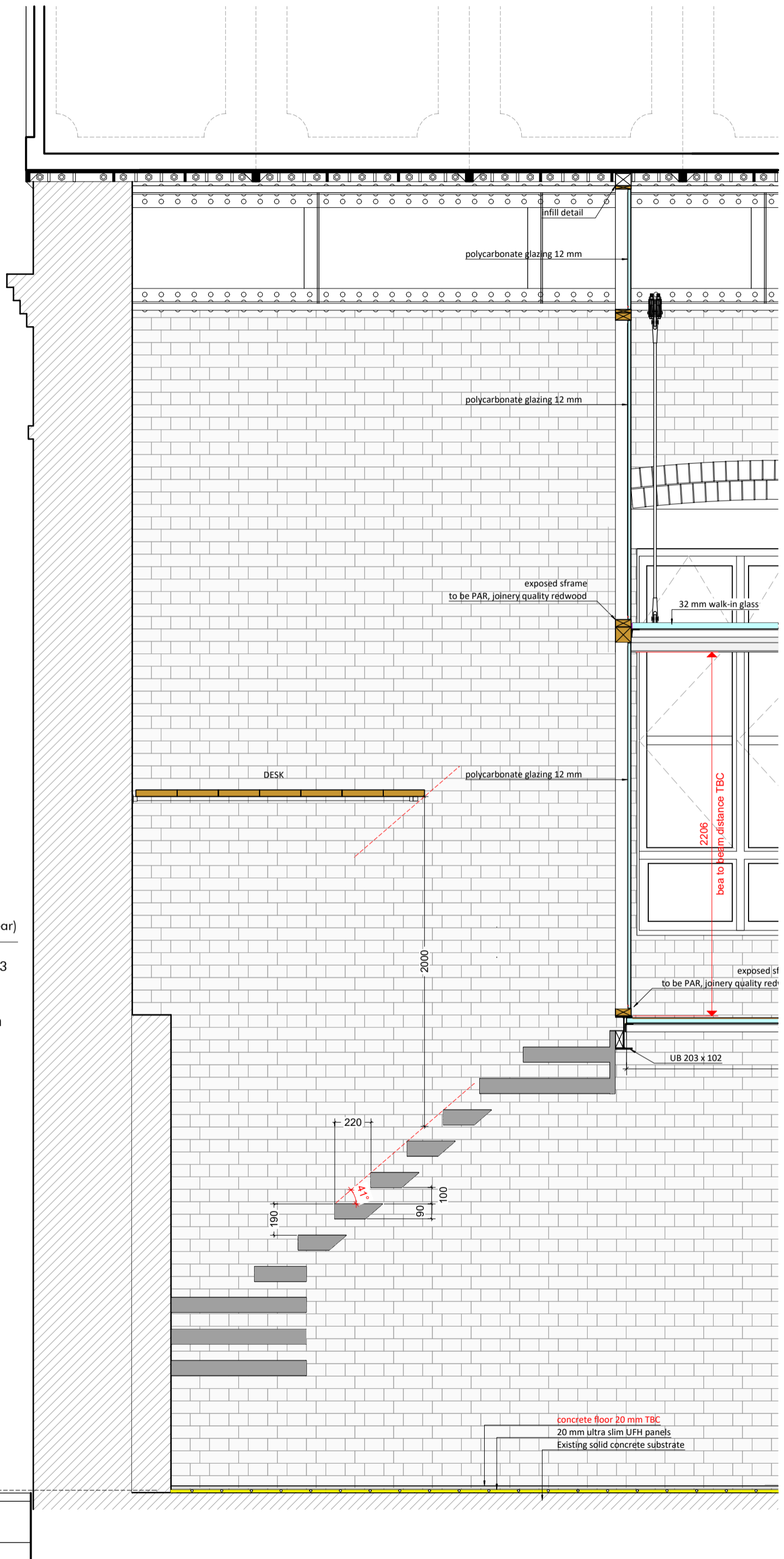


2 Section 4-4 (Front)  
3014 scale 1:25 @A3

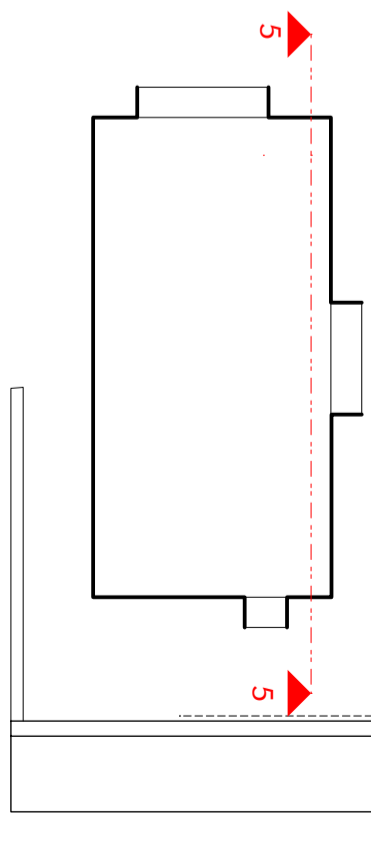
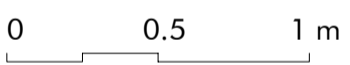
0 0.5 1 m



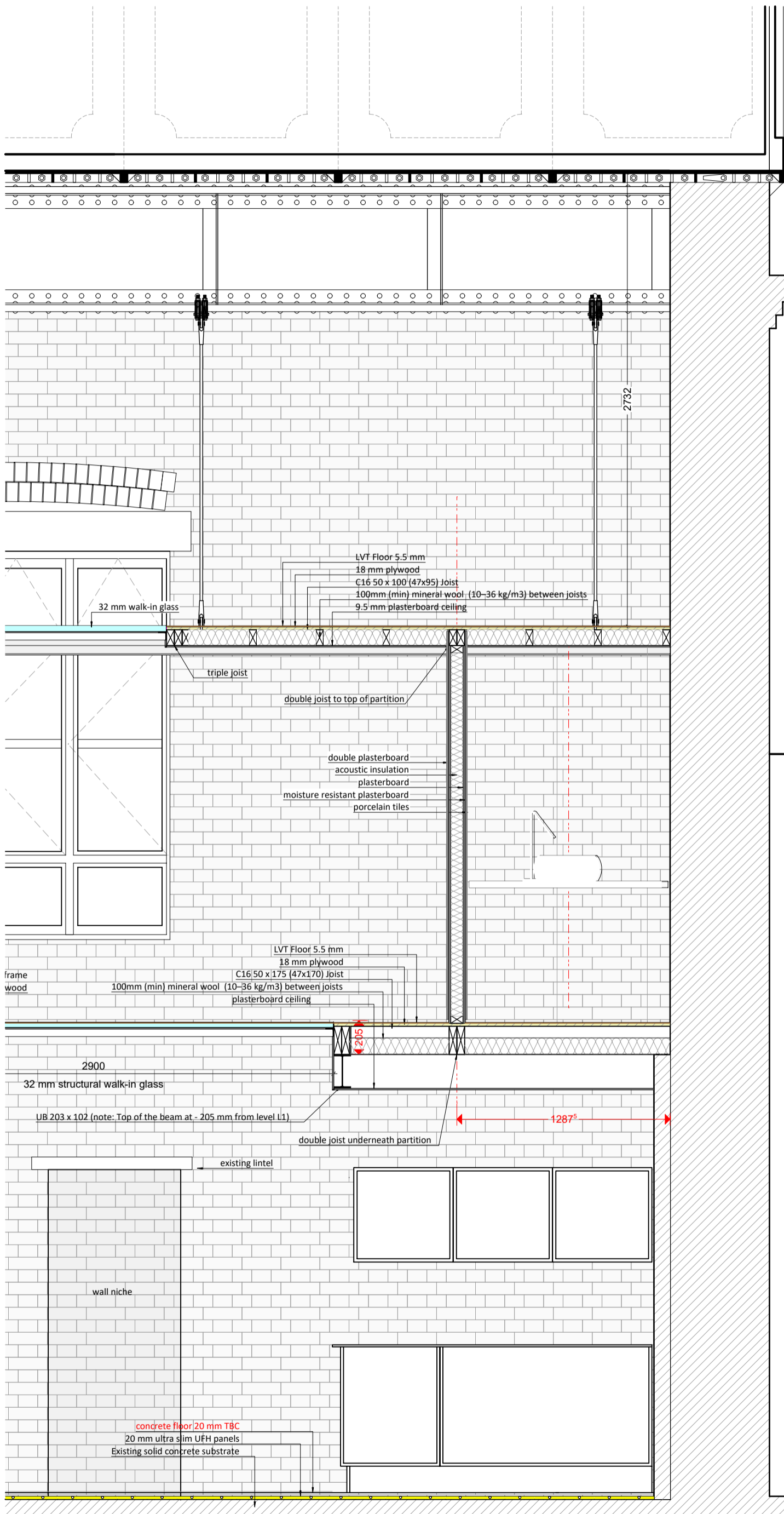




1 Section 5-5 (Rear)  
3015 scale 1:25 @A3

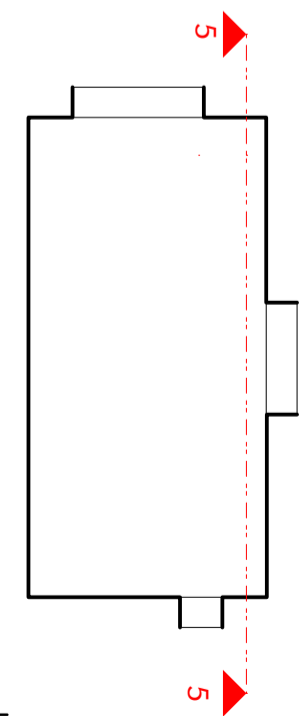


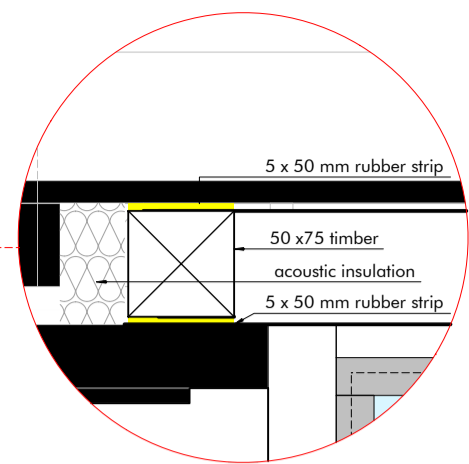
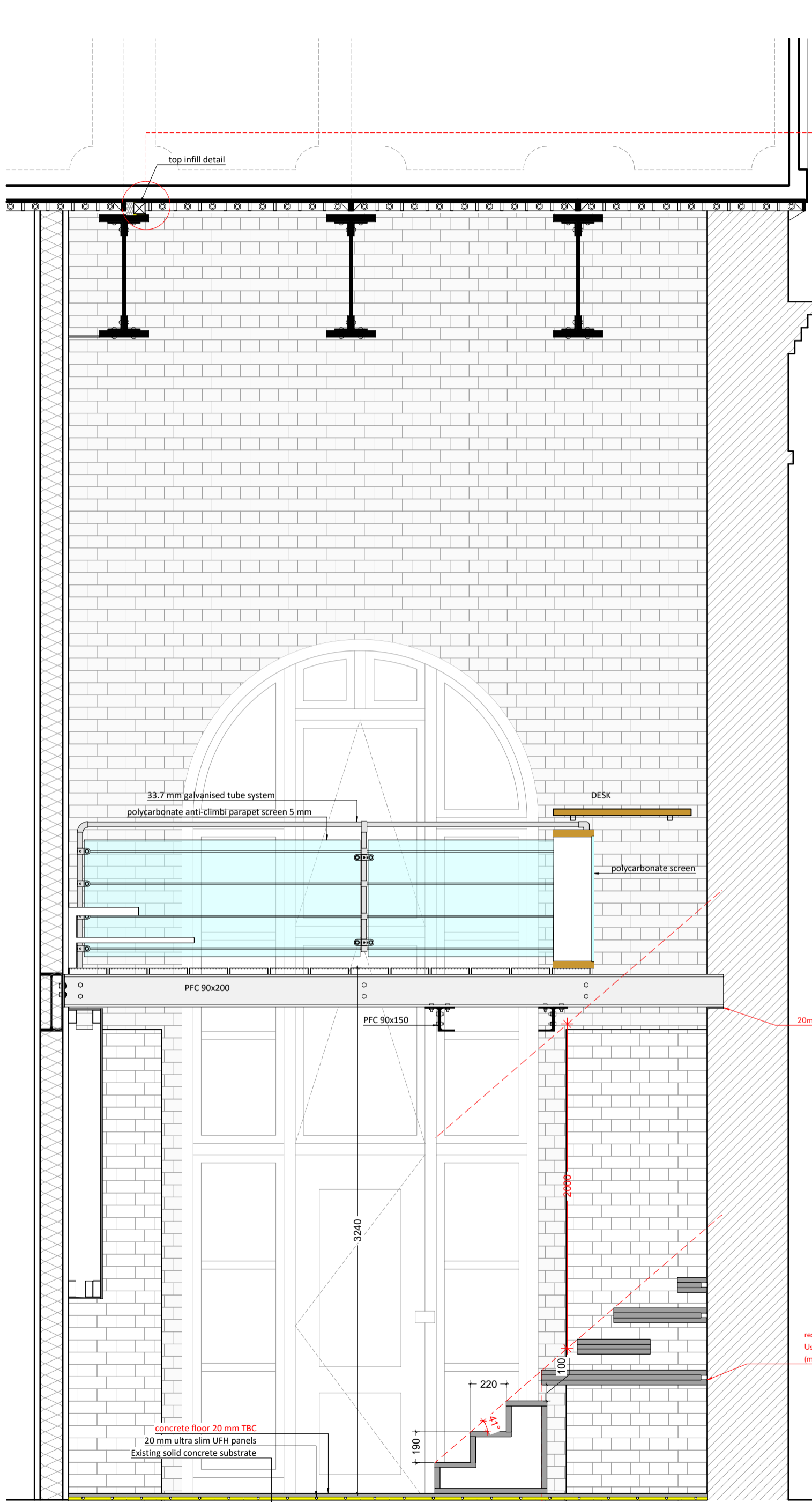
Revision Release date Drawn/Checked NOTES



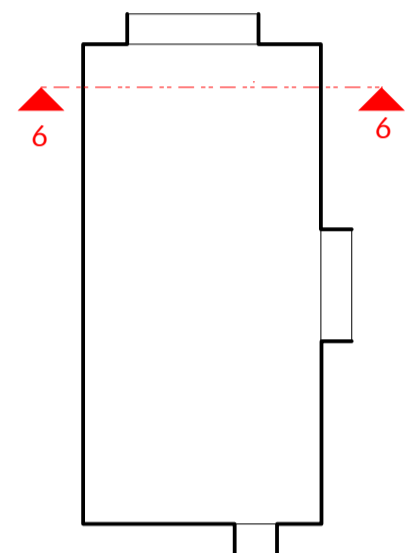
2 Section 5-5 (Front)  
3015 scale 1:25 @A3

0 0.5 1 m

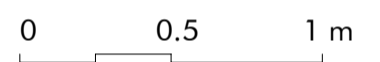




2 Top Infill detail  
3016  
scale 1:5 @A3

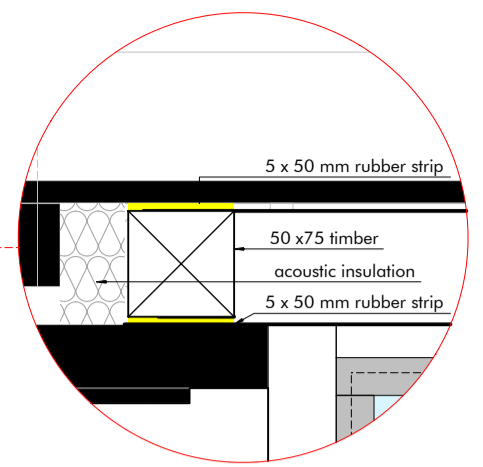
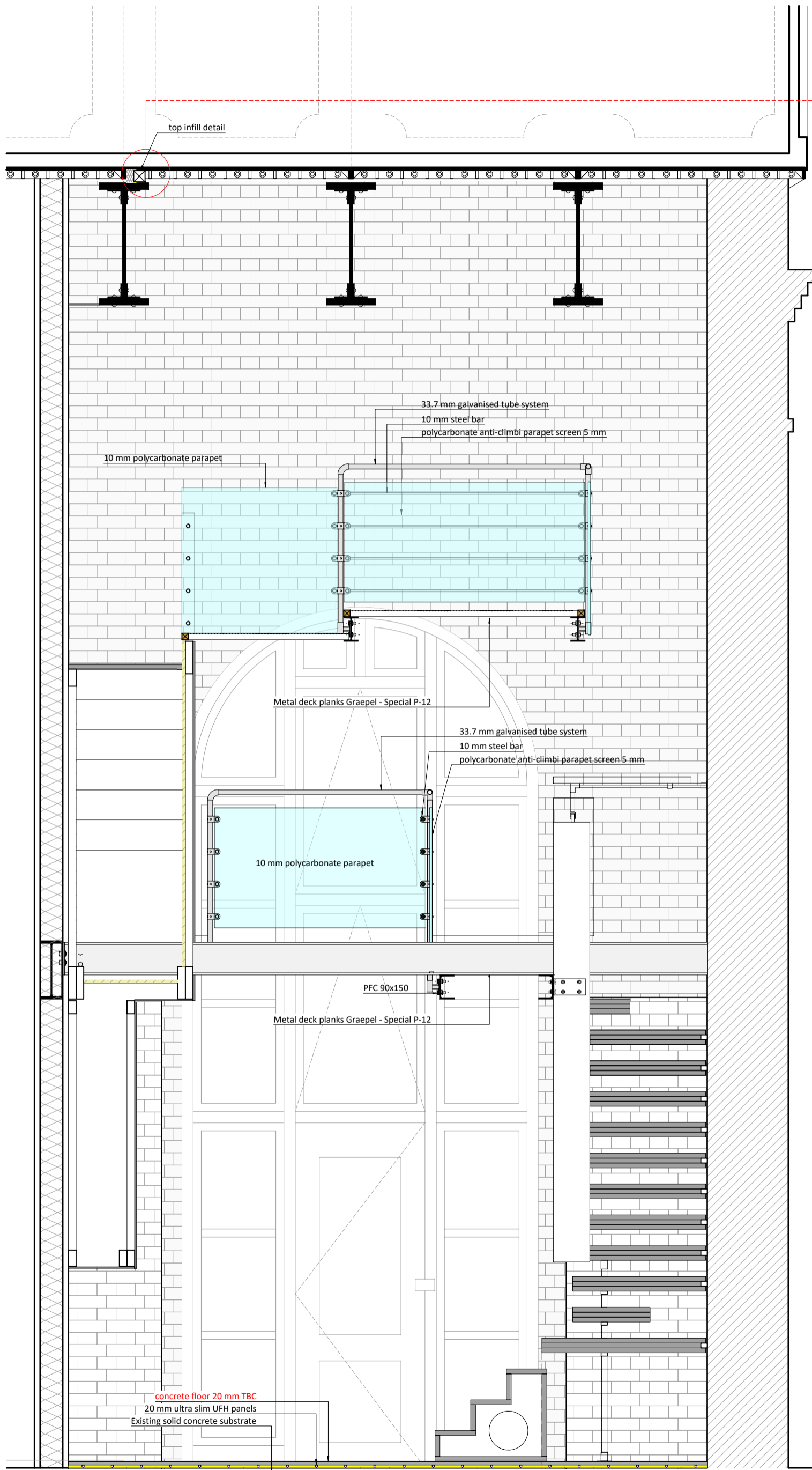


1 Section 6-6  
3016  
scale 1:25 @A3

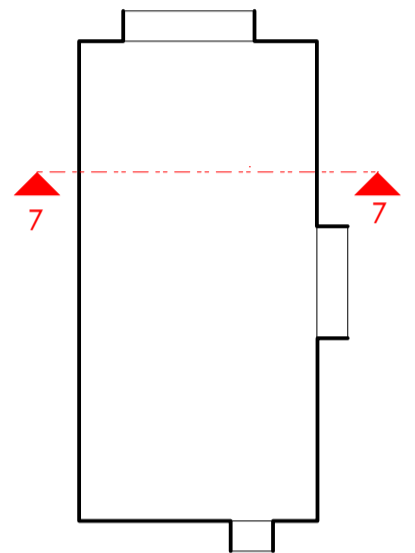


20mm steel spreader / bearing plate

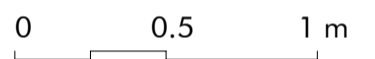
resin fix bolts to bracket  
Use HY-270 Hilti HIT-V M10  
(min embedment depth of 80mm)

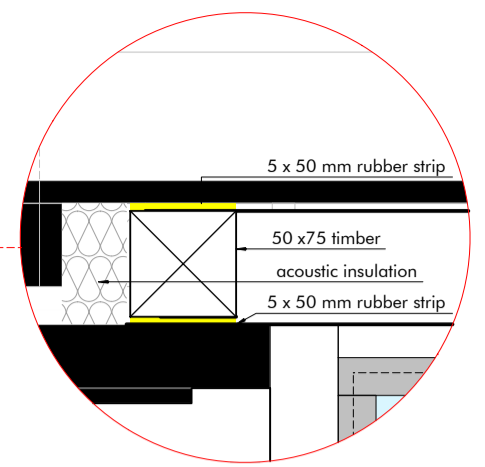
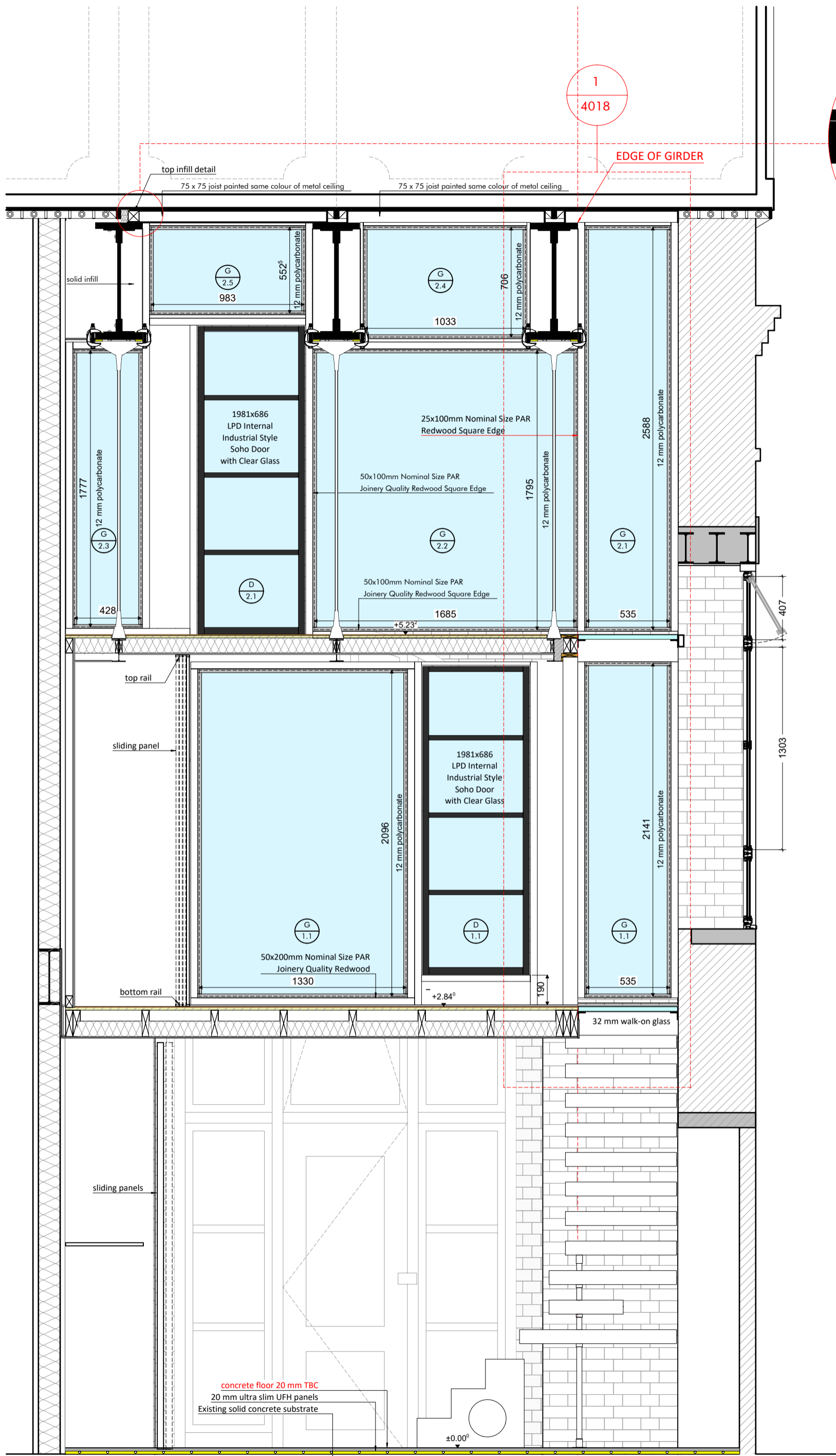


2 Top Infill detail  
3016  
scale 1:5 @A3



1 Section 7-7  
3017  
scale 1:25 @A3



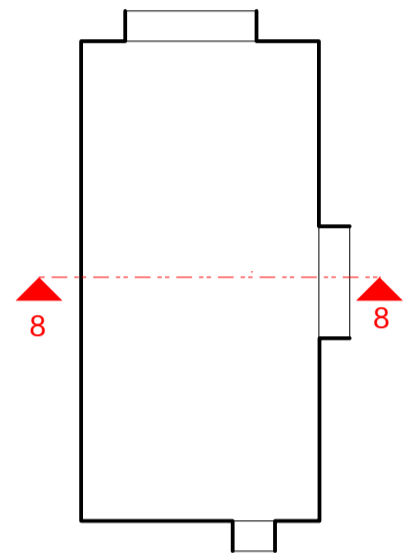


1  
4018

EDGE OF GIRDER

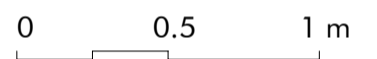
2  
3016

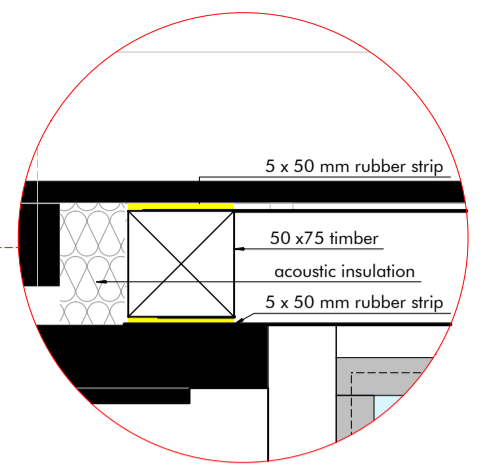
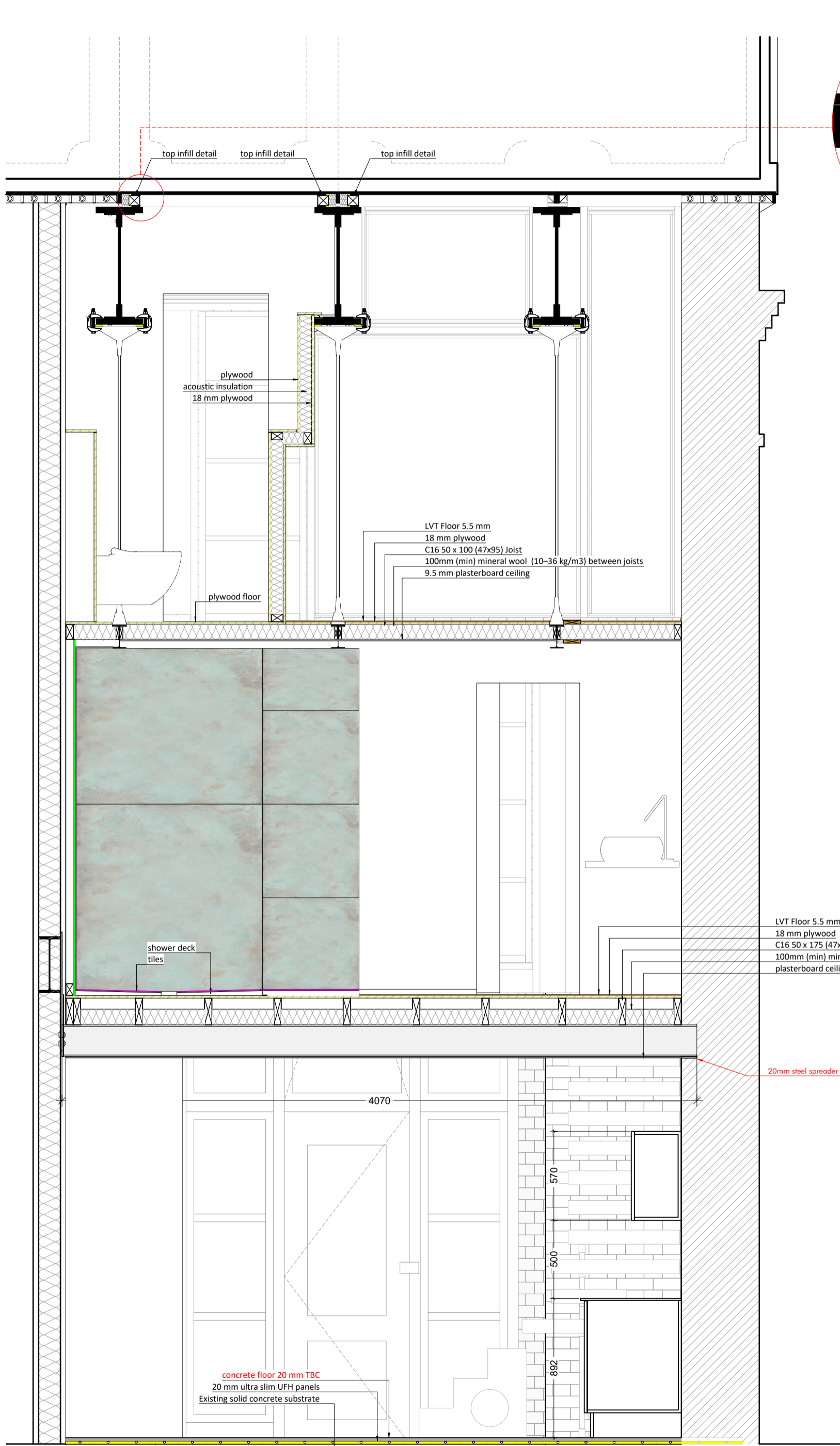
Top Infill detail  
scale 1:5 @A3



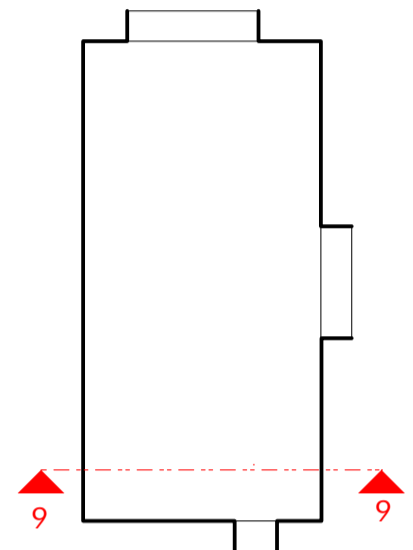
1  
3018

Section 8-8  
scale 1:25 @A3

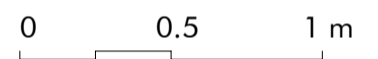


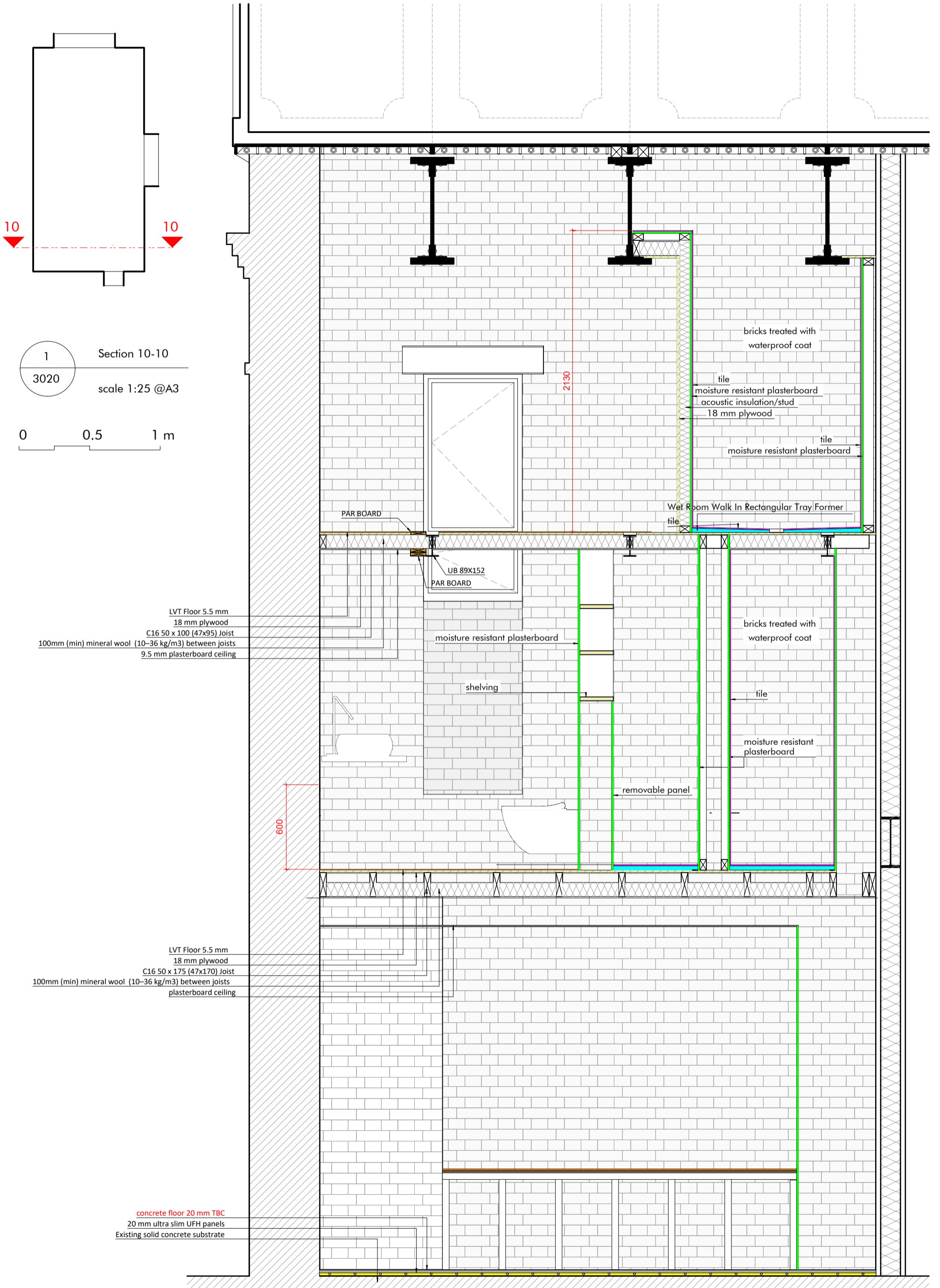


2 Top Infill detail  
3016  
scale 1:5 @A3



1 Section 9-9  
3019  
scale 1:25 @A3





1 Section 10-10  
3020 scale 1:25 @A3

0 0.5 1 m

LVT Floor 5.5 mm  
18 mm plywood  
C16 50 x 100 (47x95) Joist  
100mm (min) mineral wool (10-36 kg/m<sup>3</sup>) between joists  
9.5 mm plasterboard ceiling

LVT Floor 5.5 mm  
18 mm plywood  
C16 50 x 175 (47x170) Joist  
100mm (min) mineral wool (10-36 kg/m<sup>3</sup>) between joists  
plasterboard ceiling

concrete floor 20 mm TBC  
20 mm ultra slim UFH panels  
Existing solid concrete substrate