

THEME

Aerials

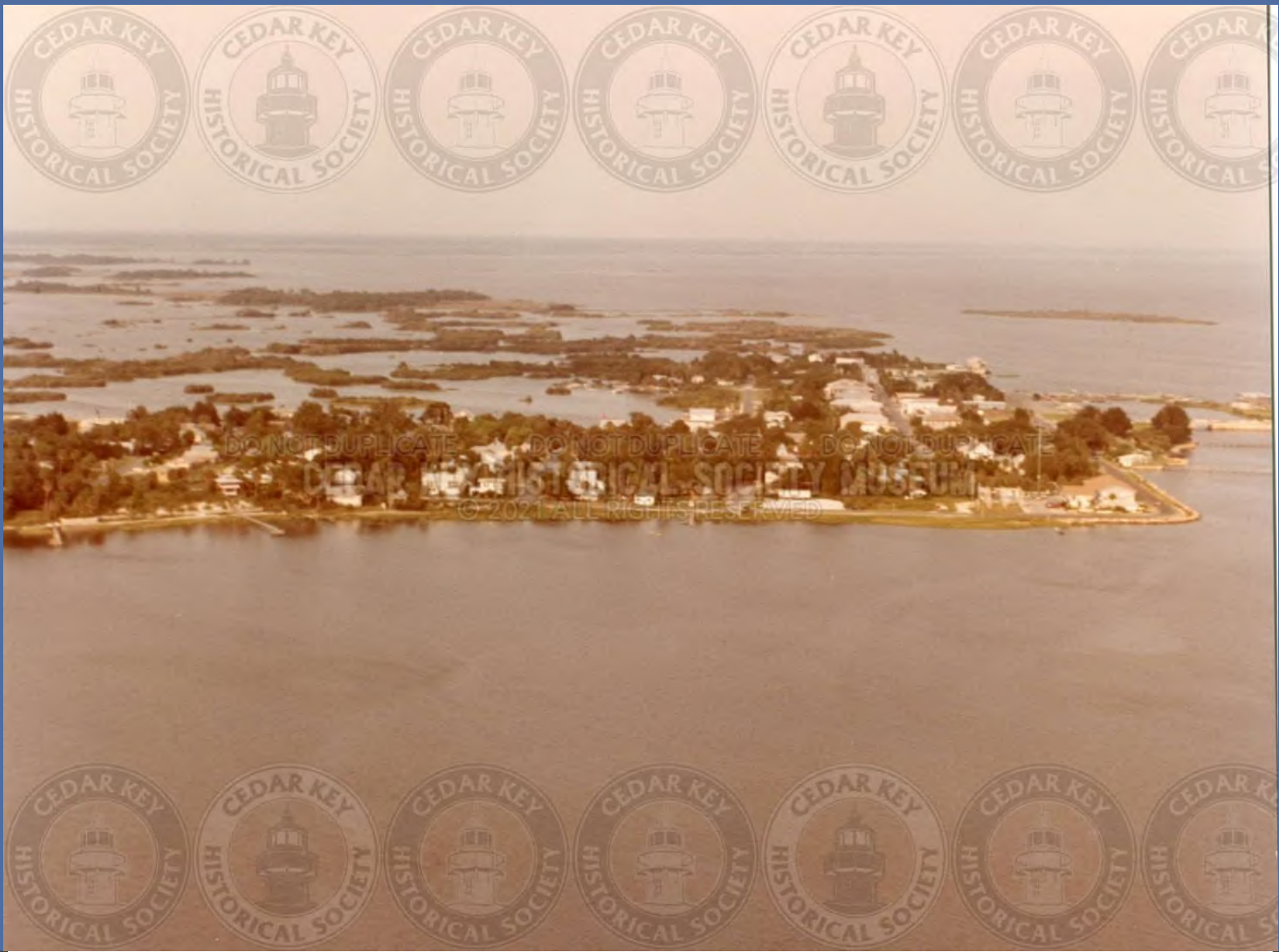
“Bird's eye view of Cedar Key and Surrounding Islands.”

To Navigate Photos Use the "Next" & "Previous" Arrows Below



IMG01001

AERIAL VIEW OF CEDAR KEY LOOKING SE FROM AIRPORT WITH PINEY POINT BRIDGE IN FOREGROUND



IMG01002
AEIRAL VIEW LOOKING EAST LATE 1960S



Cedar Key Shores - Unites # 5 & 6

IMG01003

AERIAL VIEW OF HODGSON HILL AND TYRE CREEK



IMG01004
AERIAL MAP OF ATSENA OTIE 1852



IMG01005

AERIAL PHOTO THAT LOOKS LIKE ITS TAKEN FROM THE WATERTOWER LOOKING EAST TOWARDS DOCK STREET - PRIOR TO 1950



IMG01006

AERIAL PHOTOGRAPH OF CEDAR KEY - CEDAR KEY, FLORIDA



IMG01007

AERIAL VIEW OF CEDAR KEY LOOKING WEST 1960S



IMG01008

AERIAL VIEW LOOKING S FROM G STR. WINTER CREVASSE HOUSE IN CENTER LOWER CORNER 1940S



IMG01009

AERIAL VIEW OF CEDAR KEY LOOKING E, THOMAS BOAT HOUSE IN FOREGROUND



IMG01010
AERIAL VIEW OF (HODGSON HILL UNKNOWN)



IMG01011
AERIAL VIEW OF (UNKNOWN)



IMC01012

AERIAL VIEW OF 3RD ST. AND HWY. 24 RICHBURG FISHHOUSE IN FOREGROUND



IMG01013
AERIAL VIEW OF 7TH STREET BREWER-W OODROW HATHCOX HOME ABOUT 1950'S



IMG01014
AERIAL VIEW OF AIRPORT AND PINEY POINT MID1950S



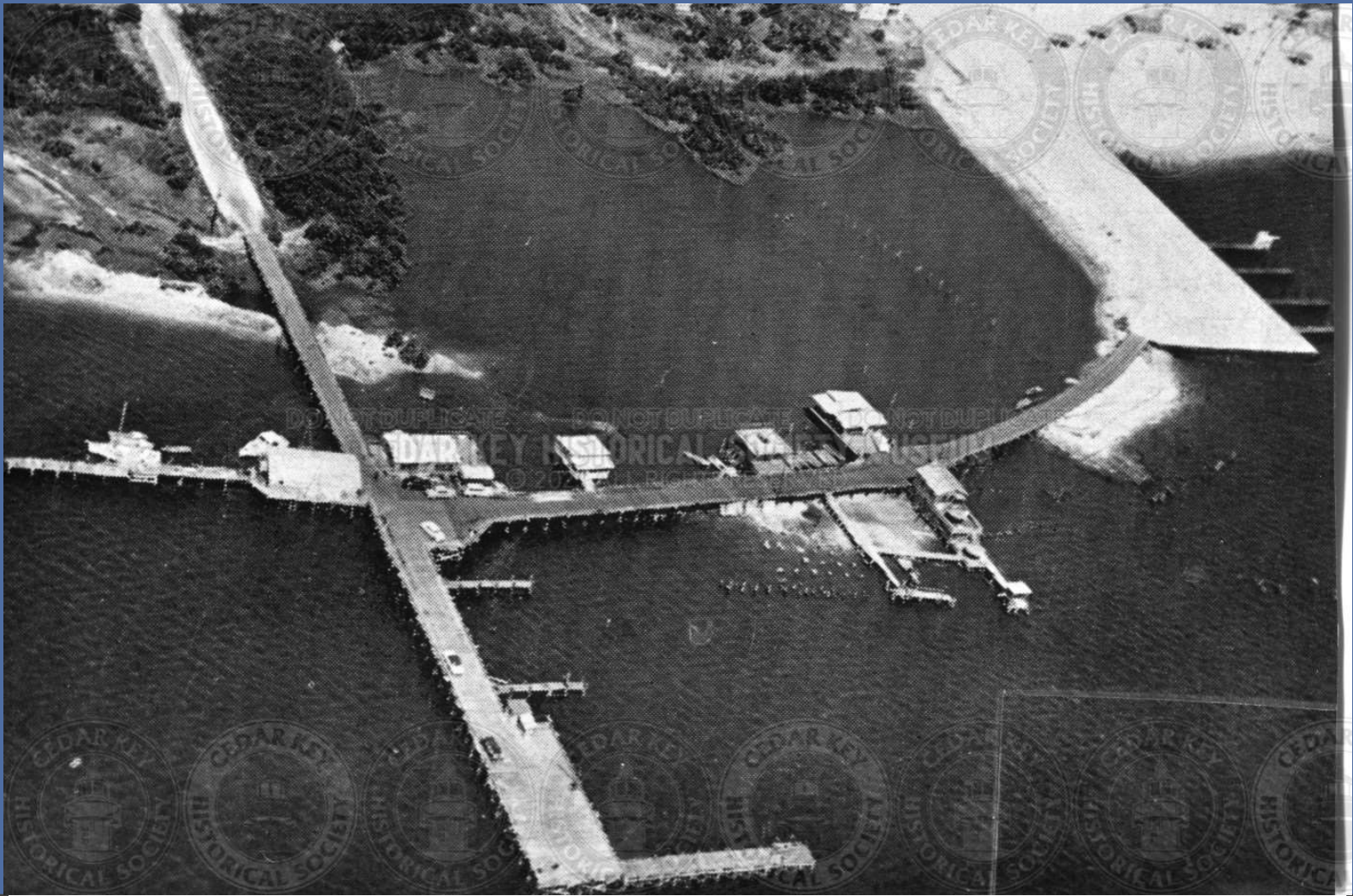
Andrews Circle (Beelers)

IMG01015
AERIAL VIEW OF ANDREWS CIRCLE OF HODGSON HILL LOOKING N



IMG01016

AERIAL VIEW OF ATSENA OTIE AFTER ABANDONMENT



IMG01017
AERIAL VIEW OF BIG DOCK 1953



IMG01018

AERIAL VIEW OF BOOGIE RIDGE LOOKING EAST. PHOTOGRAPHY PRE-DATES THE CONSTRUCTION OF NOW MODERN DAY RESIDENTIAL HOUSING. DATE EST. 1960'S



IMG01019
AERIAL VIEW OF CITY PARK AND PIER 1950S



IMG01020

AERIAL VIEW OF CEDAR KEY 1960S AFTER SAND SPIT ROAD BUILT



IMG01021

AERIAL VIEW OF CEDAR KEY AIRPORT AND TYRE CREEK BRIDGE LOOKING S



IMG01022

AERIAL VIEW OF CEDAR KEY AND GTL AIRPORT LOOKING EAST



IMG01023
AERIAL VIEW OF CEDAR KEY LOOKING SE WITH SCHOOL GYM IN MIDGROUND 1950S



IMG01024

AERIAL VIEW OF CEDAR KEY WITH CITY PARK AND MARINA LOOKING SW PRIOR TO 1980S



IMG01025
AERIAL VIEW OF CEDAR KEY 1960S



IMG01026

AERIAL VIEW OF CITY PARK AND MARINA AREA LOOKING SOUTH TOWARD ATSENA OTIE



IMG01027
AERIAL VIEW OF CK AIRPORT WITH PLANE TAKING OFF



IMG01028

AERIAL VIEW OF CLARK ISLAND OFF OF HODGSON HILL AREA



IMG01029

AERIAL VIEW OF CORONET PARK SHOWING BRIDGE #2 AND ISLAND JIFFY 1970S



IMG01030
AERIAL VIEW OF END OF HODGSON HILL AREA SHOWING CLARK ISLAND [UNKNOWN]



IMC01031

AERIAL VIEW OF FIBER FACTORY WITH ICE PLANT, ANDREWS HOUSE, TOOKE HOUSE AND TOOKE FISHHOUSE



IMG01032

AERIAL VIEW OF FIBER FACTORY WITH ICE PLANT, DEPOT AND OIL DOCK, 1939



IMG01033
AERIAL VIEW OF FIBER FACTORY, RAILROAD BED AND DEPOT, ICE PLANT LOOKING S, 1939



IMG01034

AERIAL VIEW OF FIRST AND G STREET BEFORE BEACHFRONT MOTEL BUILT 1960S



IMG01035

AERIAL VIEW OF GEORGE T. LEWIS AIRPORT LOOKING EAST



IMG01036

AERIAL VIEW OF HODGES AVE. AND ANDREWS CIRCLE (HODGSON HILL)



IMG01037
AERIAL VIEW OF HODGSON HILL (UNKNOWN)



IMG01038
AERIAL VIEW OF HODGSON HILL AREA WITH RYE KEY



IMG01039
AERIAL VIEW OF HODGSON HILL AREA



IMG01040
AERIAL VIEW OF HODGSON HILL SHOWING STATE MUSEUM PARKING



IMG01041

AERIAL VIEW OF HWY 24 SHOWING BOOGIE RIDGE



IMG01042

AERIAL VIEW OF HWY 24 WITH HALE ISLAND ON RIGHT AND BOOGIE RIDGE ON LEFT



IMG01043

AERIAL VIEW OF HWY. 24 WITH HALE KEY AND SUNSET ISLE AREA LOOKING NW



Jackson Island (Hug-Me-Tight & Kiss-Me-Quick)

IMG01044
AERIAL VIEW OF JACKSON ISLAND WITH HUG-ME-TIGHT AND KISS-ME-QUICK



IMG01045

AERIAL VIEW OF MILLERS ISLAND (OR SUNSET POINT) 1970S



Miller Island - Sunset Isle Trailer Park

IMG01046

AERIAL VIEW OF MILLER'S ISLAND SHOWING SUNSET TRAILER PARK



IMG01047

AERIAL VIEW OF OIL DOCK AND STORAGE TANKS EAST OF RAILROAD PIER(CURRENTLY CEDAR COVE AREA)



IMG01048

AERIAL VIEW OF PIER AND CITY PARK AREA AFTER 1960S



IMG01049
AERIAL VIEW OF PINEY POINT 1970S



IMG01050
AERIAL VIEW OF PINEY POINT AND AIRPORT 1940S



IMG01051

AERIAL VIEW OF PINEY POINT WITH DICKEY AND COULTER HOMES 1950S



IMG01052

AERIAL VIEW OF RAILROAD STATION IN EARLY 1900 SHOWING DEPOT AND Y



IMG01053

AERIAL VIEW OF SEAHORSE KEY LOOKING EAST WITH SNAKE KEY IN BACKGROUND



IMG01054

AERIAL VIEW OF SEAHORSE KEY SHOWING LIGHTHOUSE



IMG01055

AERIAL VIEW OF SEAHORSE KEY WITH NORTH KEY AND DEADMANS KEY IN BACKGROUND



IMG01056

AERIAL VIEW OF TYRE CREEK AND SITE OF OLD HUMPBACK BRIDGE AT N END OF GOOSE COVE AND ROAD TO PINEY POINT
1950S



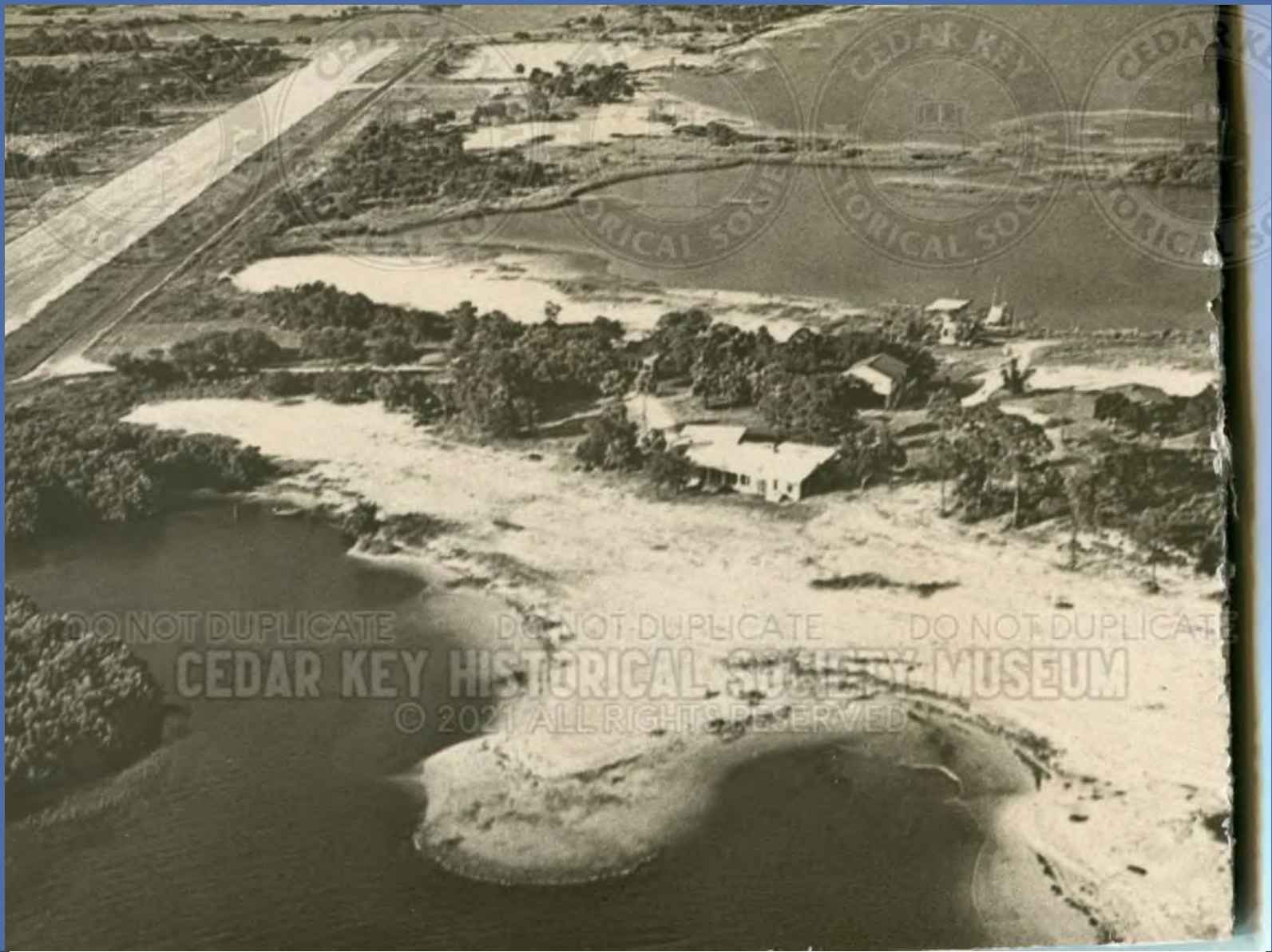
IMG01057

AERIAL VIEW OF CEDAR KEY AT END OF HWY. 24 WEST 2000



IMG01058

ARIEL VIEW LOOKING SOUTH WITH HODGSON HILL IN FOREGROUND AND PINEY POINT IN BACKGROUND ABOUT 1950S



IMG01059

AERIAL VIEW OF PINEY POINT WITH DICKEY AND COULTER HOMES LATE 1940S AND EARLY 1950S



IMG01060
AERIAL OF ATSENA OTIE LOOKING NORTH, 1970S



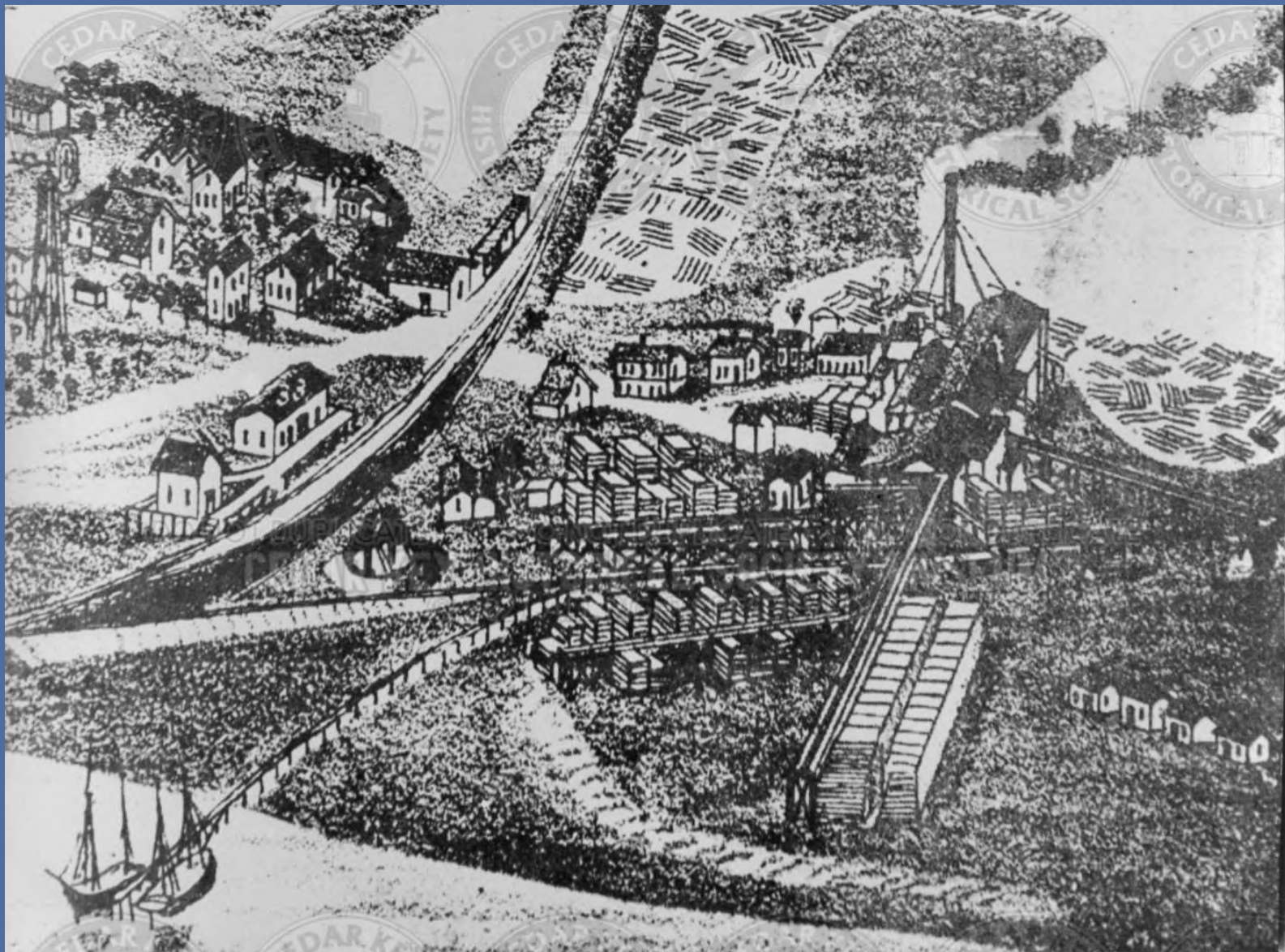
Gulf Blvd - looking North past Cemetery

IMG01061

GULF BLVD. LOOKING NORTH PAST CEMETERY



IMG01062
CEDAR KEY ON MAY 20,2000 AT 1,410 FEET



Train track - Left is the area which was later called "Hungry Bend" because the factory workers lived there. #33 - Railroad station at Cedar Key. Right is Fennimore Mill. Later this was the site of the fiber mill and Dr. Dan Andrews and Tookes residences. Today there are condominiums there.

IMG01063

AERIAL OF TRAIN TRACKS AT DOCK WITH DESCRIPTION



IMG01064

AERIAL VIEW OF CEDAR KEY - CEDAR KEY, FLORIDA LOOKING WEST



IMG01065

AERIAL VIEW OF CEDAR KEY 2000 WITH CONDOS ON FENIMORE MILL WITH NORTH KEY IN BACKGROUND



IMG01066

AERIAL VIEW OF CEDAR KEY DOCK AND BOAT RAMP - CEDAR KEY, FLORIDA



IMG01067

AERIAL VIEW OF GOOSE COVE BEACH ABOUT 1953



IMG01068
AERIAL VIEW OF CEDAR KEY, 1950S