

THEME

Boats

“Nautical Vessels in All Varieties ”

To Navigate Photos Use the "Next" & "Previous" Arrows Below



IMG02001

SAM PYLES OF THE GULF COAST TRANSPORTATION COMPANY - CEDAR KEY, FLORIDA



IMG02002
CEDAR KEY HARBOR 1907



IMG02003
FISHING FLEET - CEDAR KEY, FLORIDA 1900



IMG02004

MOTORBOAT AT CEDAR KEY MARINA - PHOTOGRAPHED IN DECEMBER, 1977



IMG02005
IMG00186 PREVIOUS IMAGE ID



IMG02006

VIEW SHOWING A SAILBOAT DOCKED AT CEDAR KEY, FLORIDA - PHOTOGRAPHED IN NOVEMBER 1982



IMG02007

STEPHEN RUSSELL MALLORY ABOARD A SHIP - CEDAR KEY, FLORIDA LATE 1800'S



IMG02008

VIEW OF BOAT MOORED AT CEDAR KEY CA 1940



IMG02009

BROWNS LANDING, RICE CREEK, PALATKA1890 - FLORIDA



IMG02010

TOMOKA LANDING, ORMAND FLORIDA 1890 - PHOTO BY THOMAS JACKSON



IMG02011
IMG00123 PREVIOUS IMAGE ID

The Annie, Cedar Key, Fla.



IMG02012
ANNIE AT CEDAR KEY - 1900S



IMG02013

BOATS TIED UP IN #2 CANAL IN CEDAR KEY - PHOTO BY DR DILLS



IMG02014

SHRIMP BOATS TIED UP TO CEDAR KEY DOCK - PHOTO BY DR DILLS



IMG02015
GEORGE TOOKES JENNIE LEE BUILT 1933



IMG02016

RIVER BOAT, NAMED 3 STATES, BUILT BRANFORD FL 1866 - RAN FROM CEDAR KEY TO LAURVILLE CAPTN BOB IVEY, OWNER

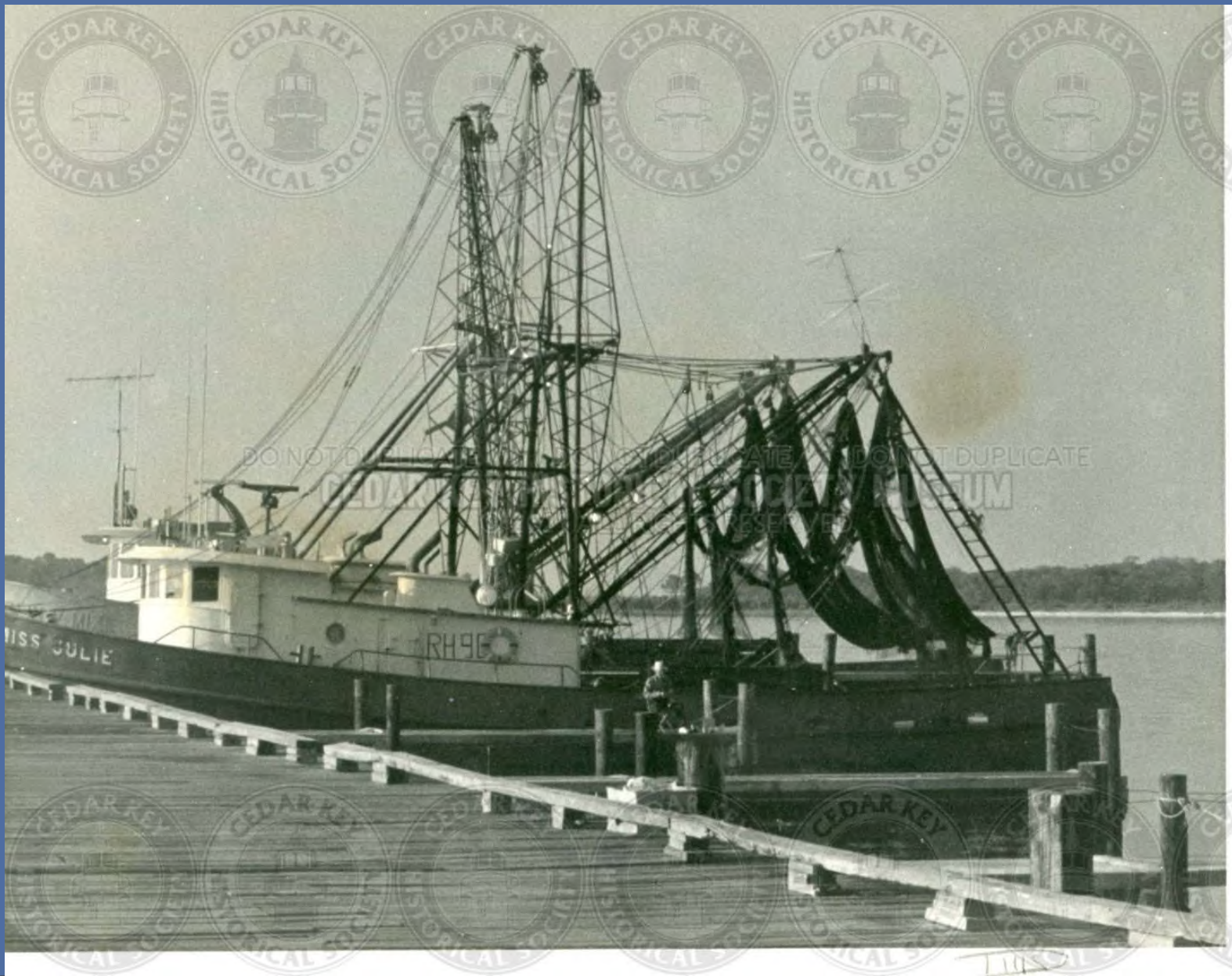


IMG02017

SHRIMP BOATS FROM MOBILE ALABAMA PULLING INTO CEDAR KEY - PHOTO BY DR DILLS



IMG02018
SHRIMP BOATS TIED UP TO CEDAR KEY DOCK - PHOTO BY DR DILLS (2)



IMG02019

MISS JULIE - SHRIMP BOAT TIED UP IN CEDAR KEY - PHOTO BY DR DILLS



IMG02020

LEANNA'S PRIDE - SHRIMP BOAT TIED UP IN CEDAR KEY - PHOTO BY DR DILLS



IMG02021

CHRIS CRAFT BOAT NAMED MEMO FUELING UP AT STANDARD OIL STATION IN CEDAR KEY



IMG02022

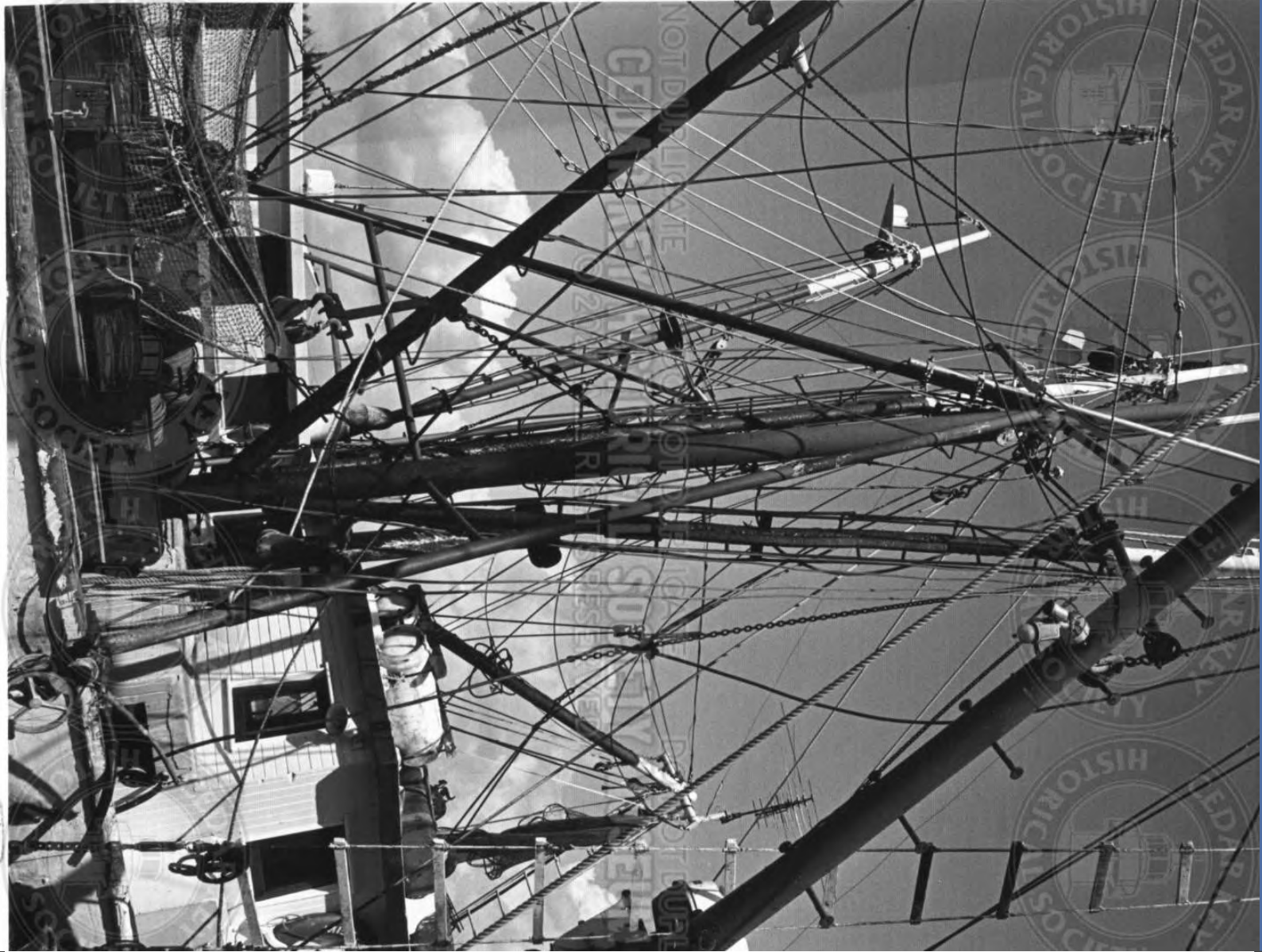
PROBABLY WEBSTER JOHNSONS BAIT-SHRIMPER BOAT THE ROMA - CEDAR KEY



IMG02023
IMG00160 PREVIOUS IMAGE ID

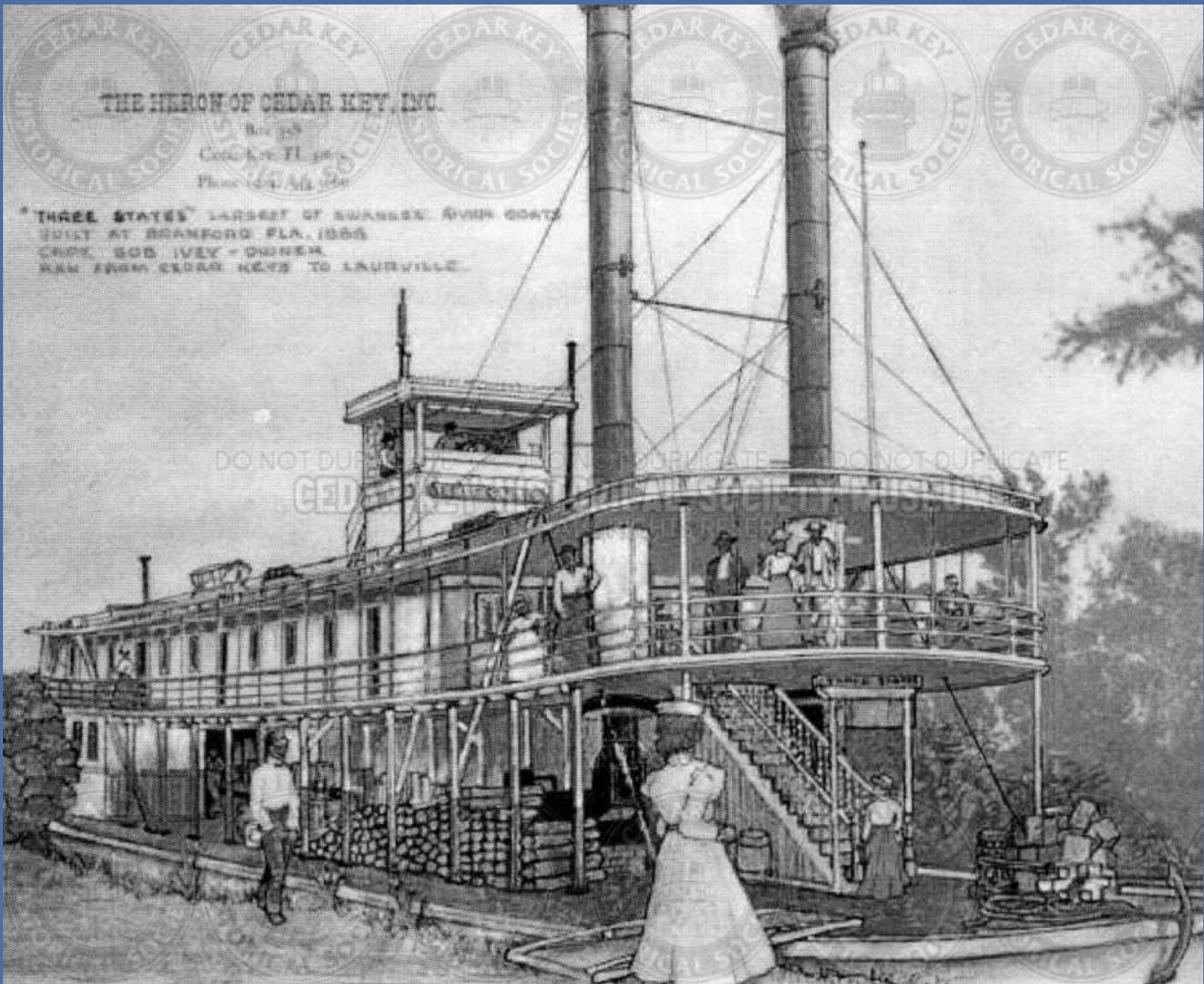


IMG02024
SKIFF BOAT TIED UP IN TYRE CREEK



IMG02025

SHRIMP BOAT AT THE CEDAR KEY DOCKS - PHOTO BY DR DILLS



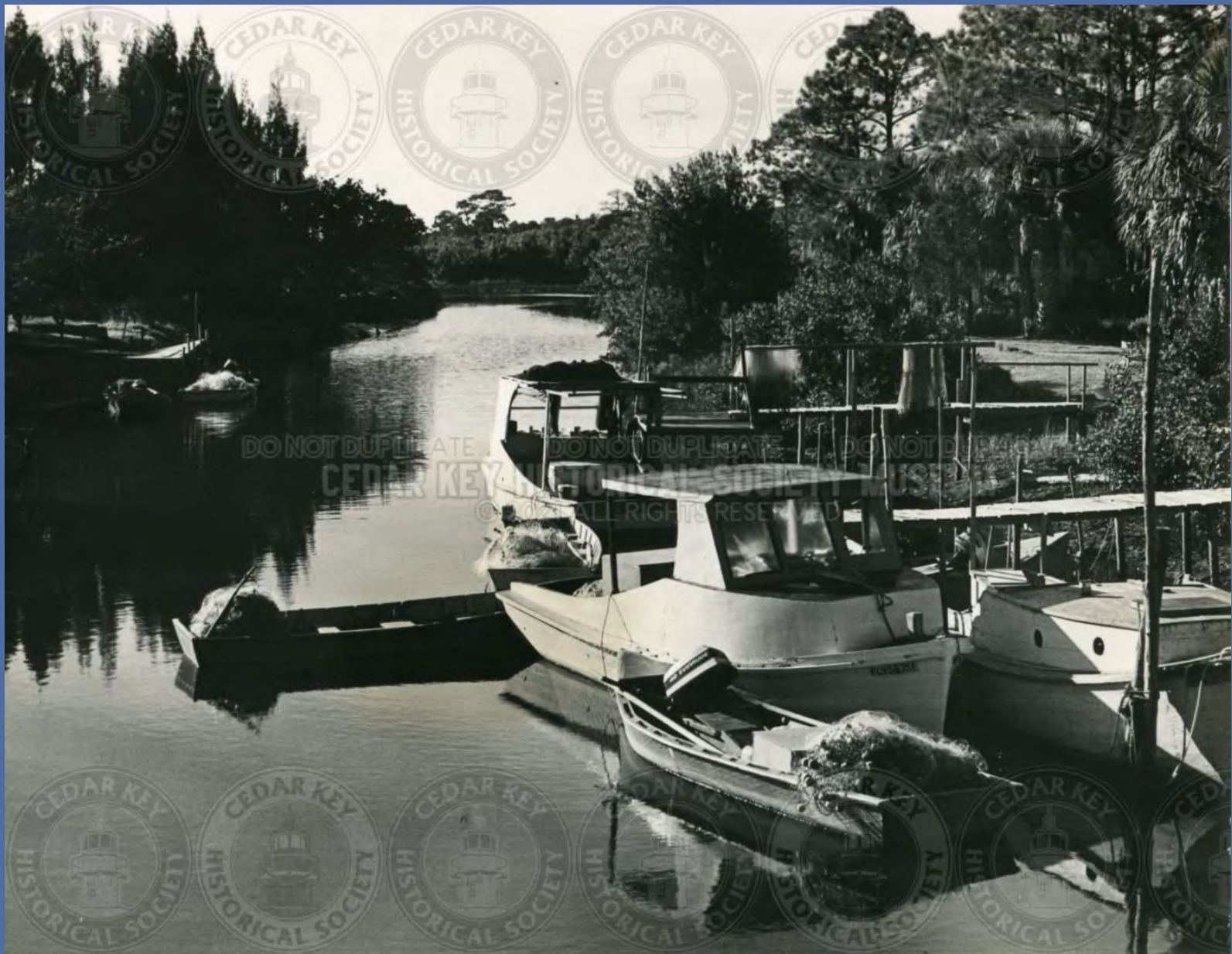
IMG0206

ADVERTISEMENT FOR THE HERON USING 3 SISTERS BOAT



IMG02027

HUMPBACK BRIDGE CANAL WITH BROOKS CAMPBELL AND MILTON MCCAIN'S BOATS



IMG02028

HUMPBACK BRIDGE CANAL LOOKING NW WITH VARNELL CAMPBELL DOCKS AND BOATS



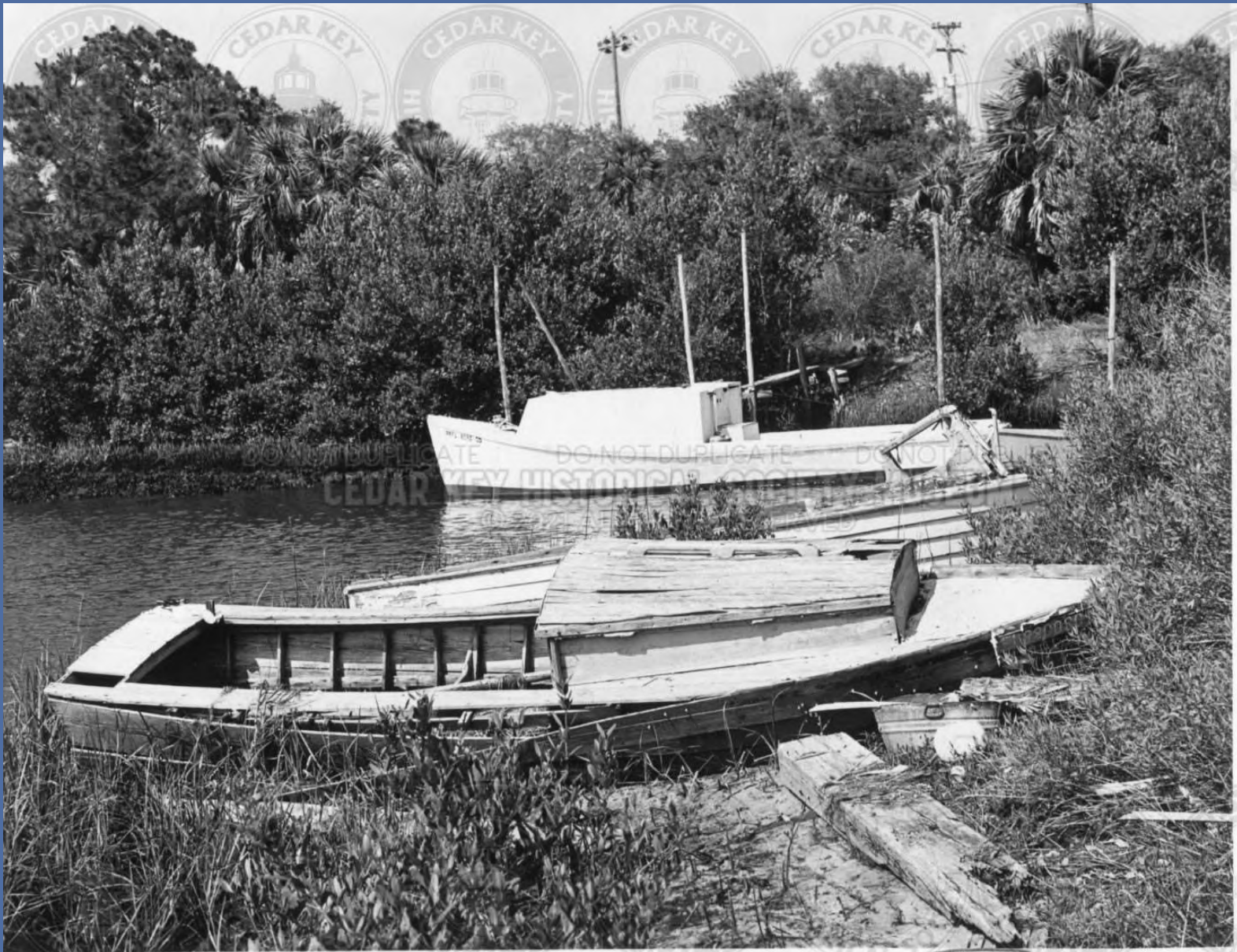
IMG0209

GREEK SPONGE BOATS AT BIG DOCK PRIOR TO 1950S



IMG02030

HUMPBACK BRIDGE CANAL BEHIND TED ALEXANDER'S HOUSE WITH MILTON MCCAIN'S BOAT TATER



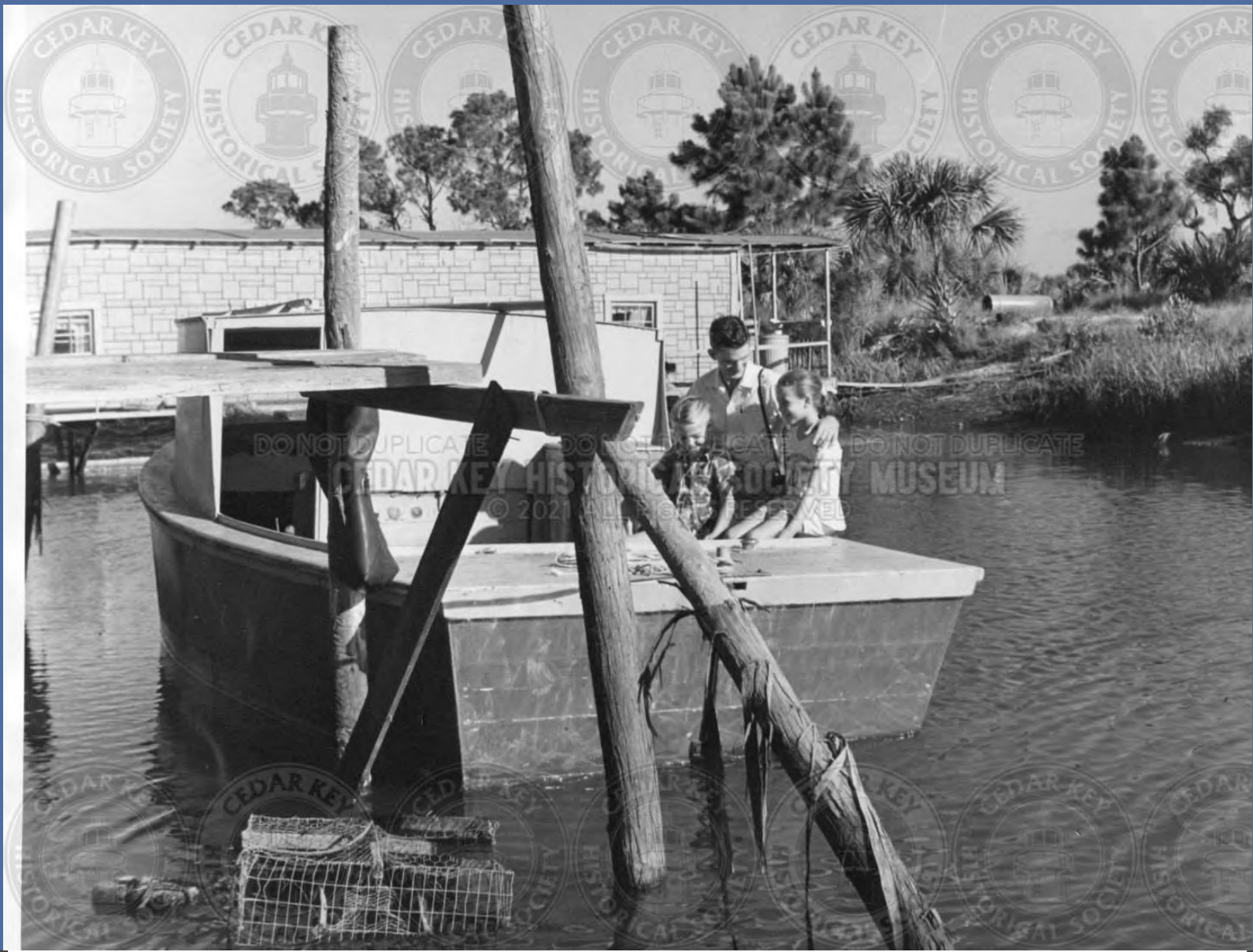
IMG02031
HUMPBAC BRIDGE CANAL WITH BOATS



IMG02032
SPONGE BOATS



IMG02033
BOATS TIED UP AT DAVIS FISH HOUSE



IMG02034

ALEX CAMPBELL'S BOATHOUSE MOORED NEAR RAILROAD BED



IMG02035

BOATS IN GOOSE COVE - LTOR RAYMOND WADLEY'S, DUD COBURN'S GREEN LIZZARD, BRYANT WADLEY'S

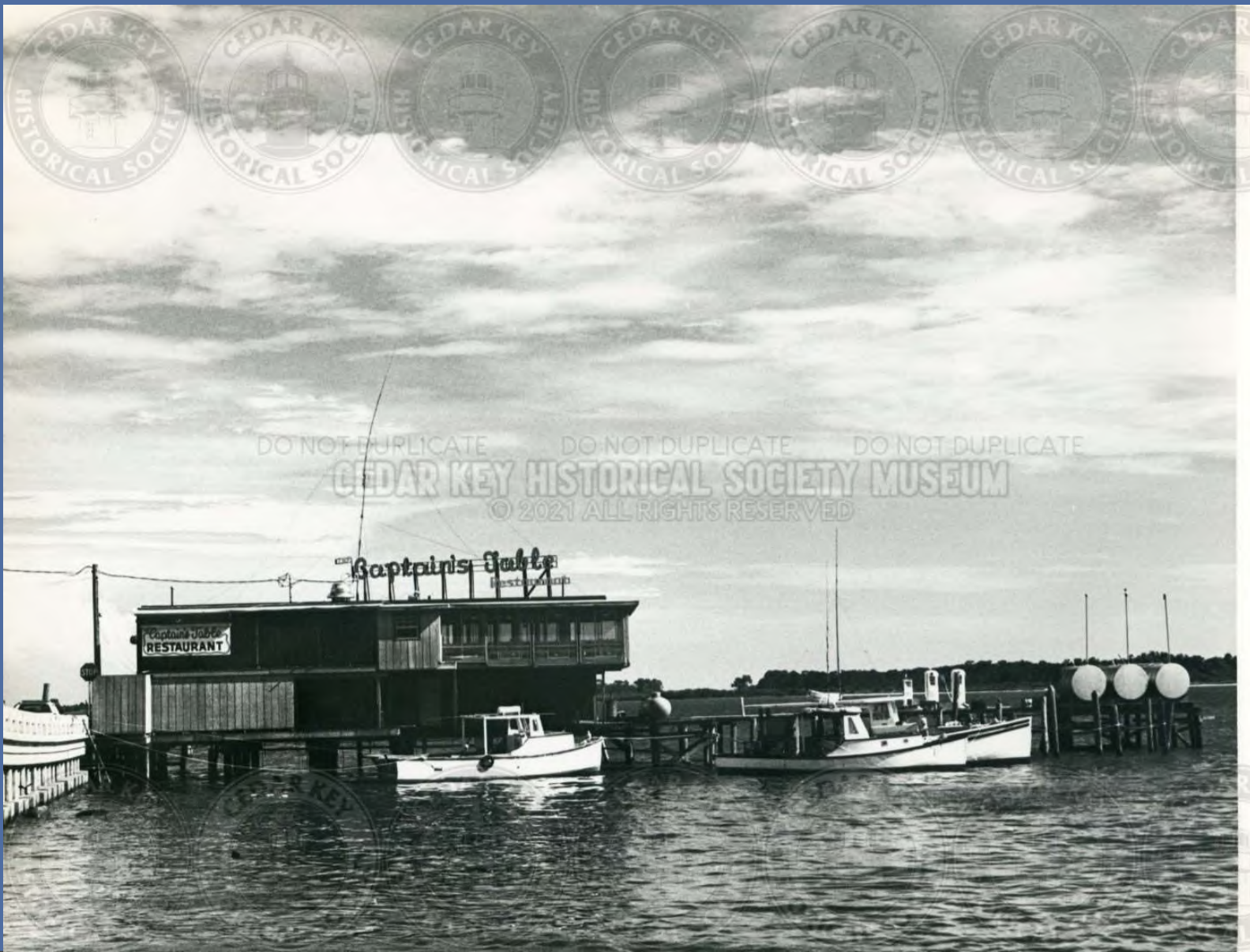


IMG02036
TYRE CREEK 1967



IMG02037

CUBAN FISHING BOAT SEEKING SANCTUARY FROM ROUGH SEAS 1978



IMG02038
WIDELOAD, DIPPER AND HOTSPUR BY DAVIS SEAFOOD AND CAPTAIN'S TABLE REST.

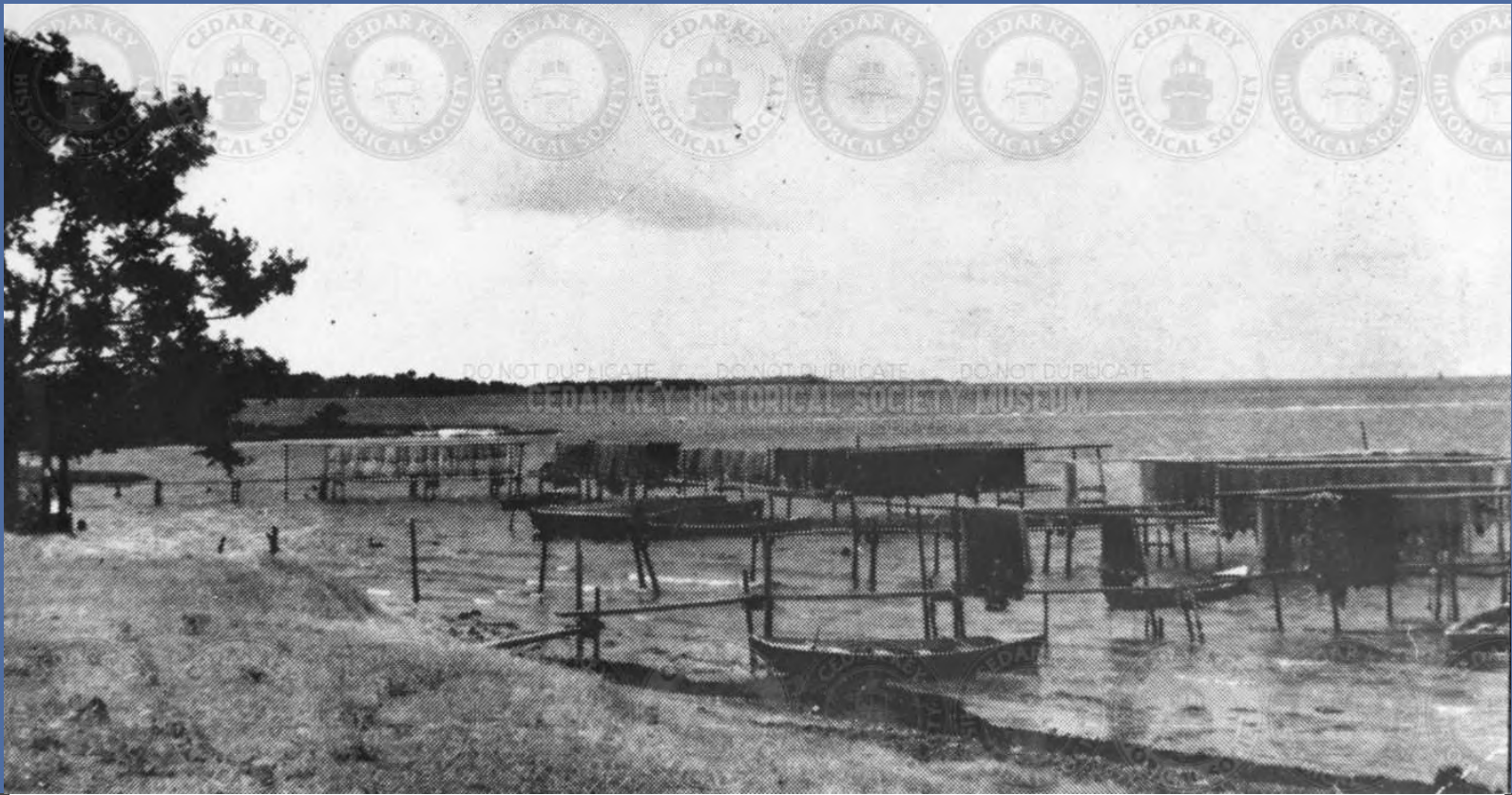


IMG02039

#2 FROM BISHOP POINT LOOKING AT #4 BRIDGE



IMG02040
FROM BISHOP POINT LOOKING AT #4 BRIDGE



IMG02041
NET SPREADS IN GOOSE COVE



IMG02042

BACK OF EDDIE RICHBURG FISHHOUSE ON BACK BAYOU WITH MONROE BAYLOR'S BOAT OF LEFT



IMG02043
SHRIMP BOATS AT BIG DOCK



IMG02044
#2 SHRIMP BOATS AT BIG DOCK



IMG02045
GEORGE TOOKE'S FISHHOUSE WITH THE ELLEN



IMG02046
STEAMBOAT CITY OF HAWKINSVILLE



IMG02047
WHITEHOUSE BOAT LANDING WITH SAILBOATS AND ATSENA OTIE IN BACKGROUND



IMG02048
#1 BOAT RUIN



IMG02049
#2 BOAT RUIN



IMG02050

CANAL BEHIND BILL OSTEEN TRAILOR WITH NET SPREADS



IMG02051

PRESENTLY CEDAR COVE- HENRY BROWN FISHHOUSE, LISA CANNING PLANT



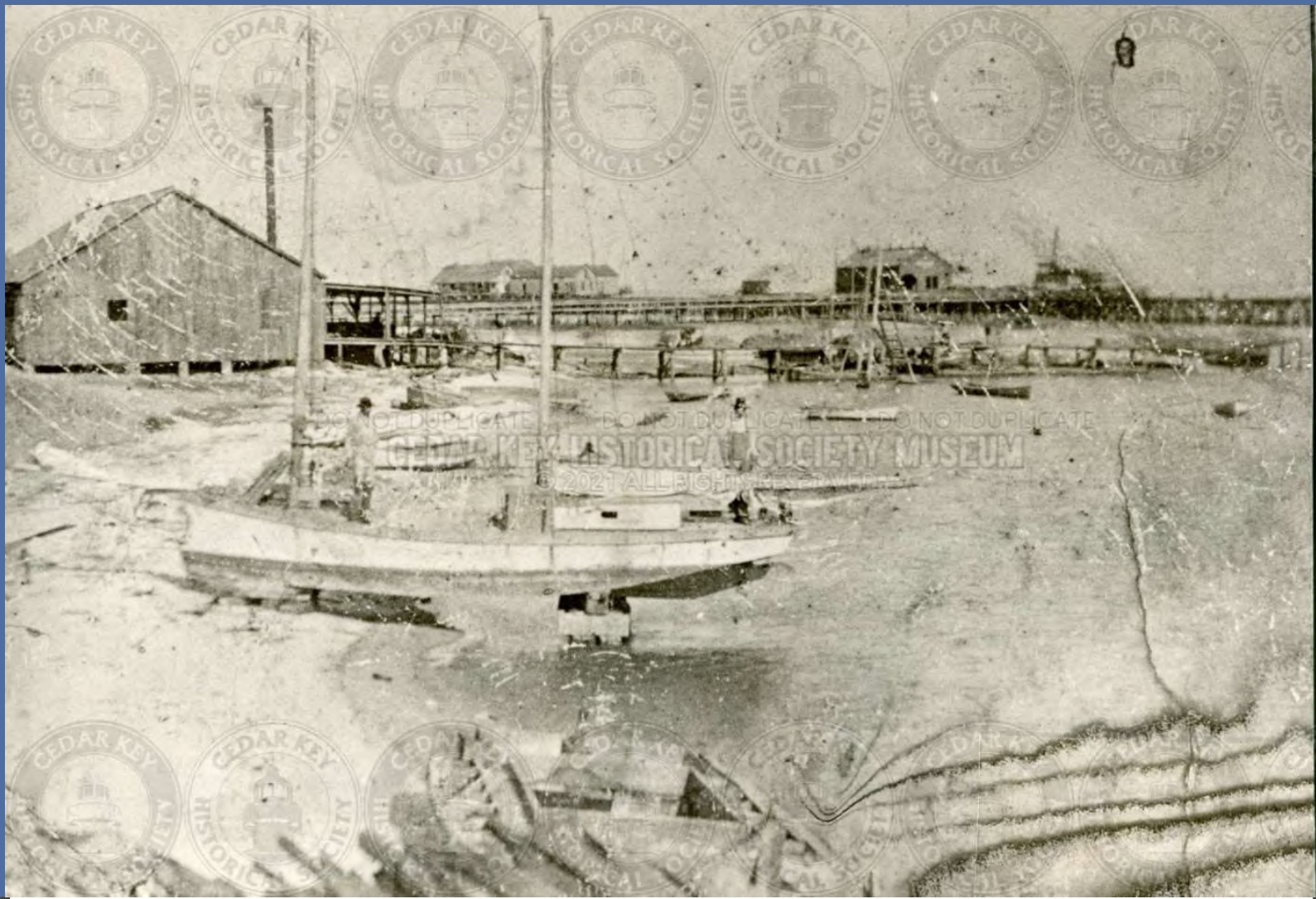
IMG02052

MILTON MCCAIN BAIT SHRIMP BOATS, TATER AND JESSE IN TYRE CREEK CANAL



IMG02053

BOAT - EDGAR B - BUILT BY JOE WILSON 1921 WITH BATHING DOCK IN BACKGROUND



IMG02054

THE BEACH AT FIRST STREET. ORIGINAL DEPOT ON THE DOCK VISIBLE IN BACKGROUND. OYSTER FACTORY ON LEFT.



IMG02055

CAPT. HEMBREE'S PARTY BOAT, SUNNY SKIES, 1965



IMG02056
PREVIOUS IMAGE ID [IMG00138]



IMG02057
SHRIMP BOATS AT BIG DOCK LOOKING EAST



IMG02058
IMG00095 PREVIOUS IMAGE ID

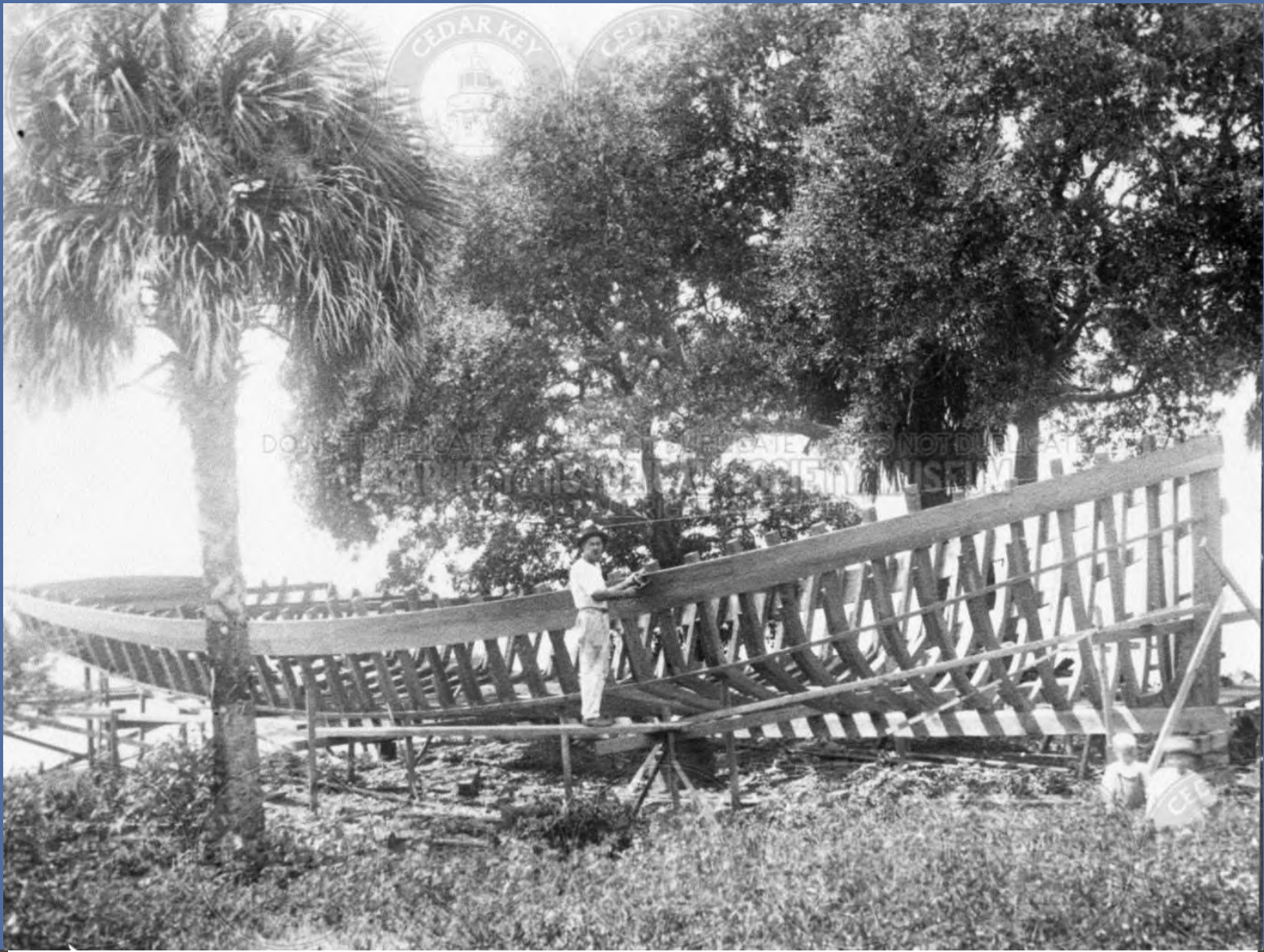


IMG02059
IMG00164 PREVIOUS IMAGE ID

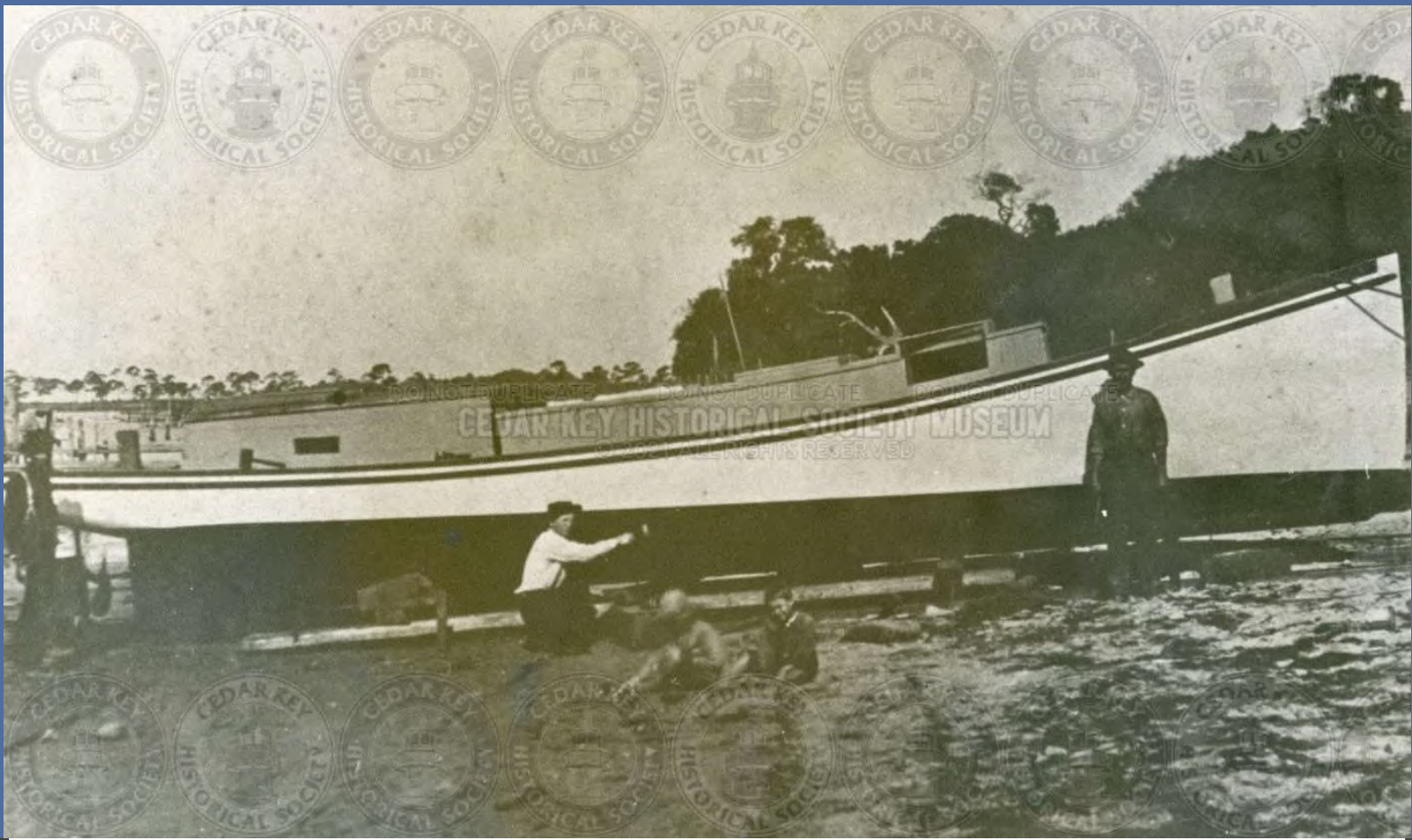


IMG02060

KATHLEEN - BUILT BY GEORGE TOOKE, 1922 - 45 FT. LONG BY 12 FT. WIDE



IMG02061
IMG00140 PREVIOUS IMAGE ID



IMG02062

HOTSPUR COMPLETION- JOE WILSON, FAR RIGHT

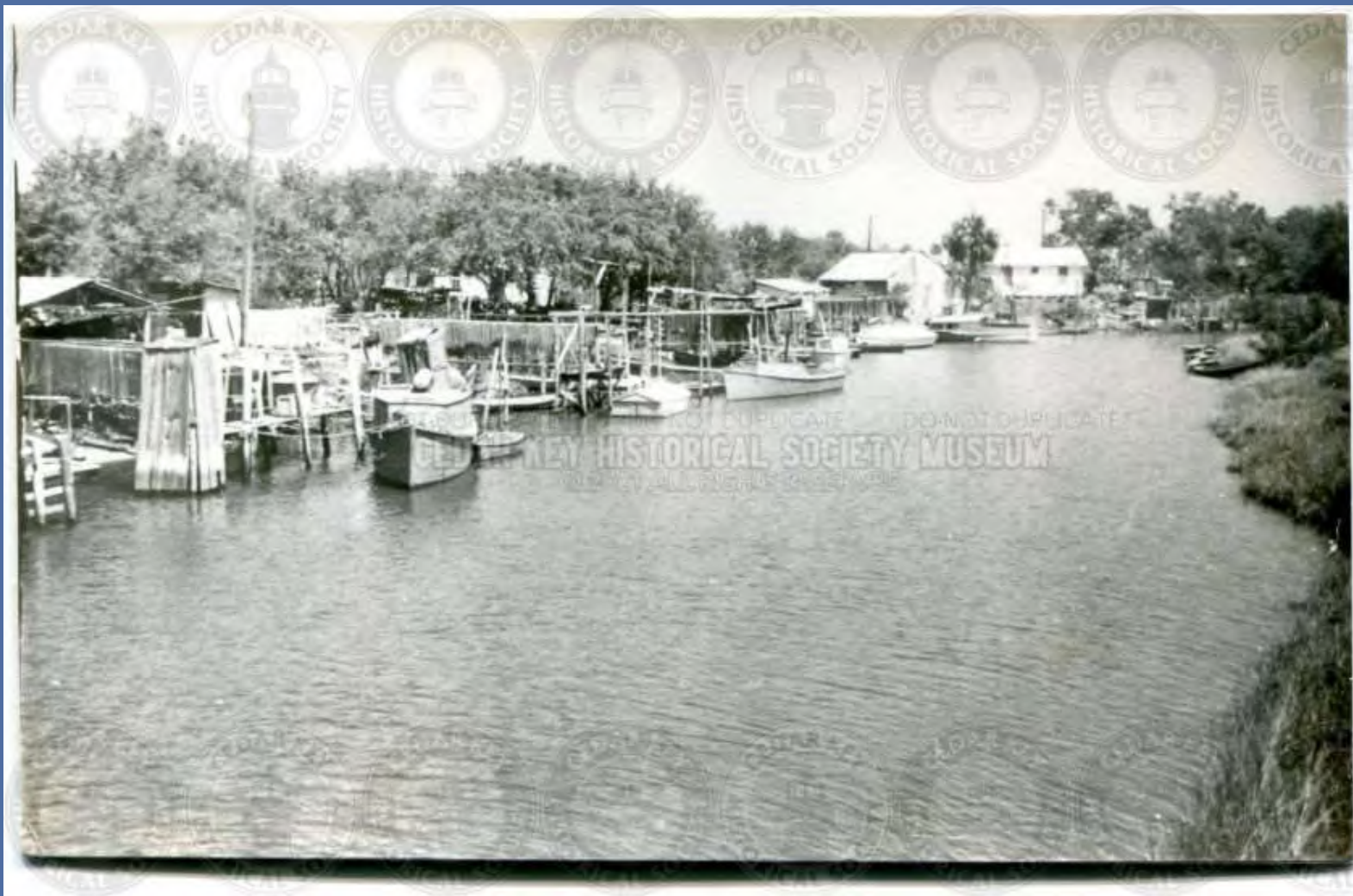


IMG02063

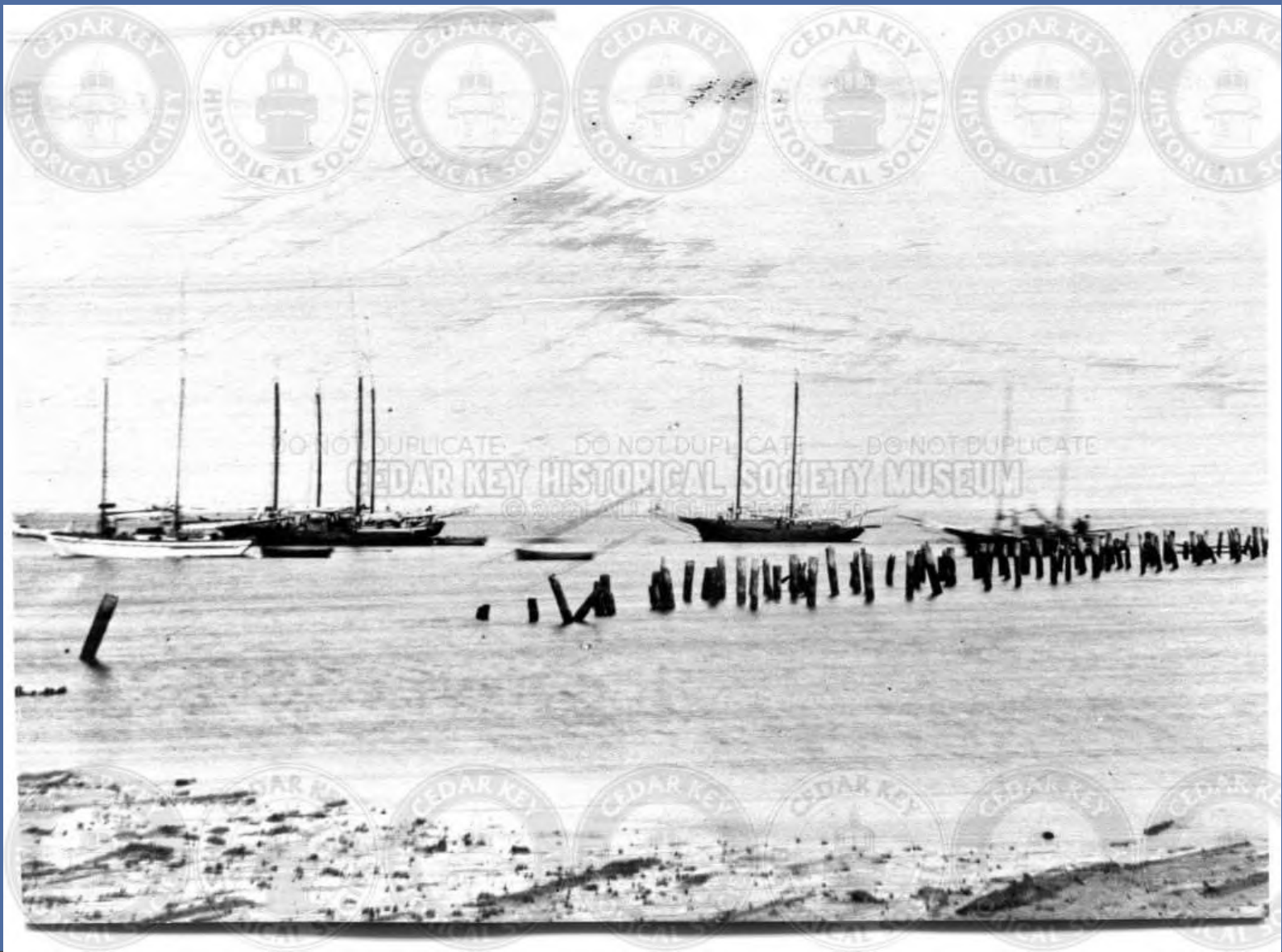
RAMONA BUILT BY WILL DELAINO, OWNED BY JOHN TOOKE



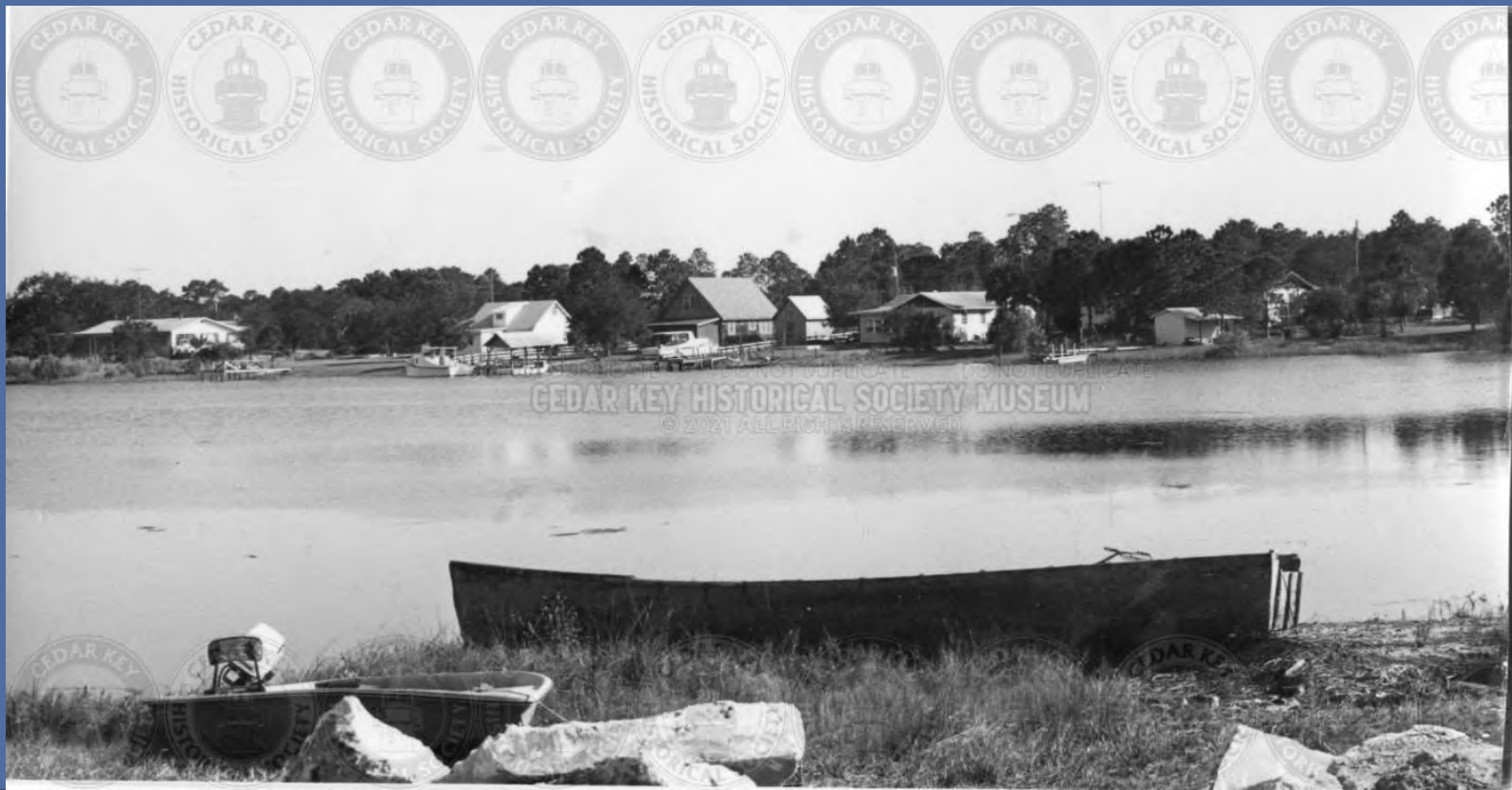
IMG02064
IMG00143 PREVIOUS IMAGE ID



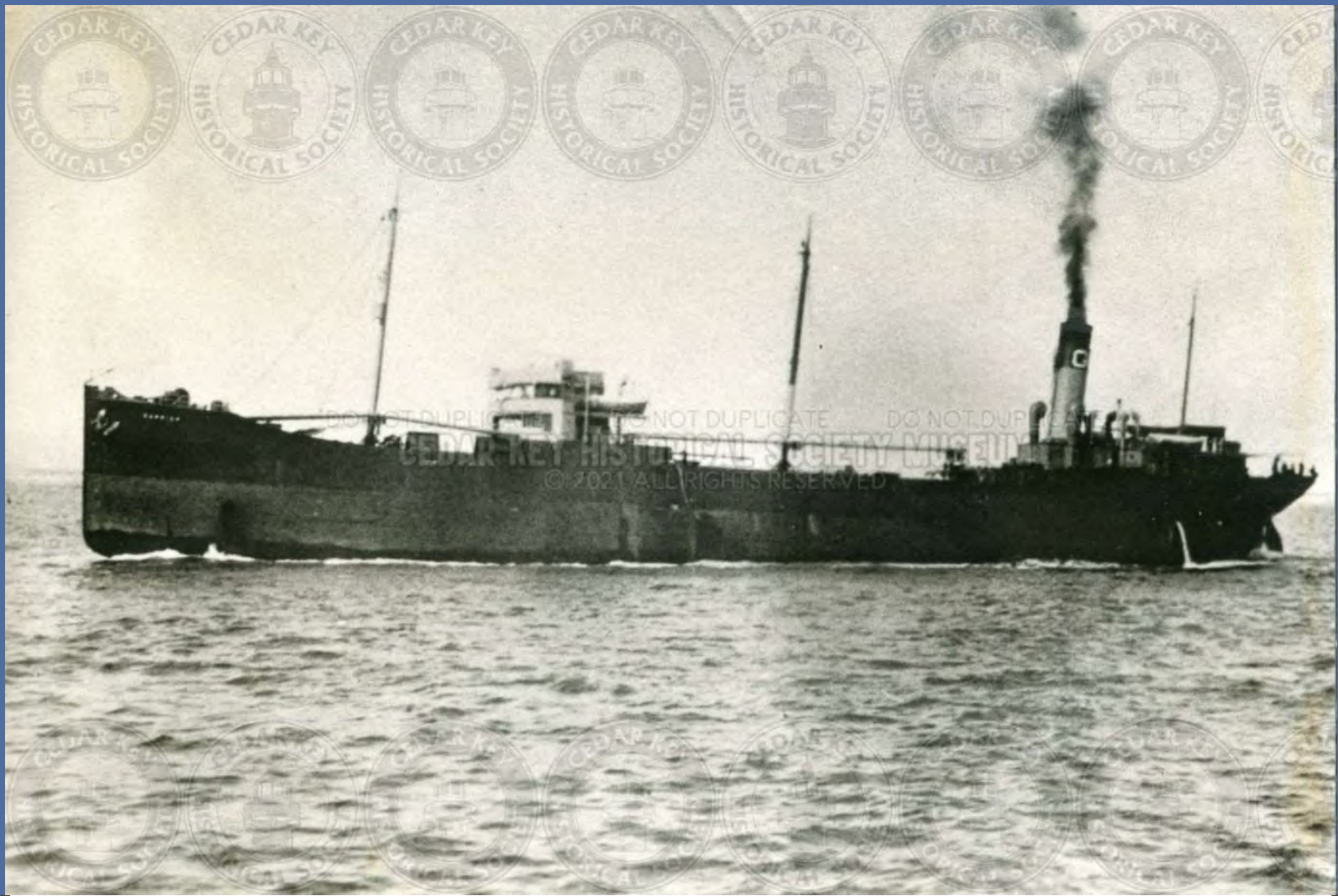
IMG02065
TYRE CREEK BEFORE SEWER 1926 - OUTHOUSE ON LEFT



IMG02066
IMG00148 PREVIOUS IMAGE ID

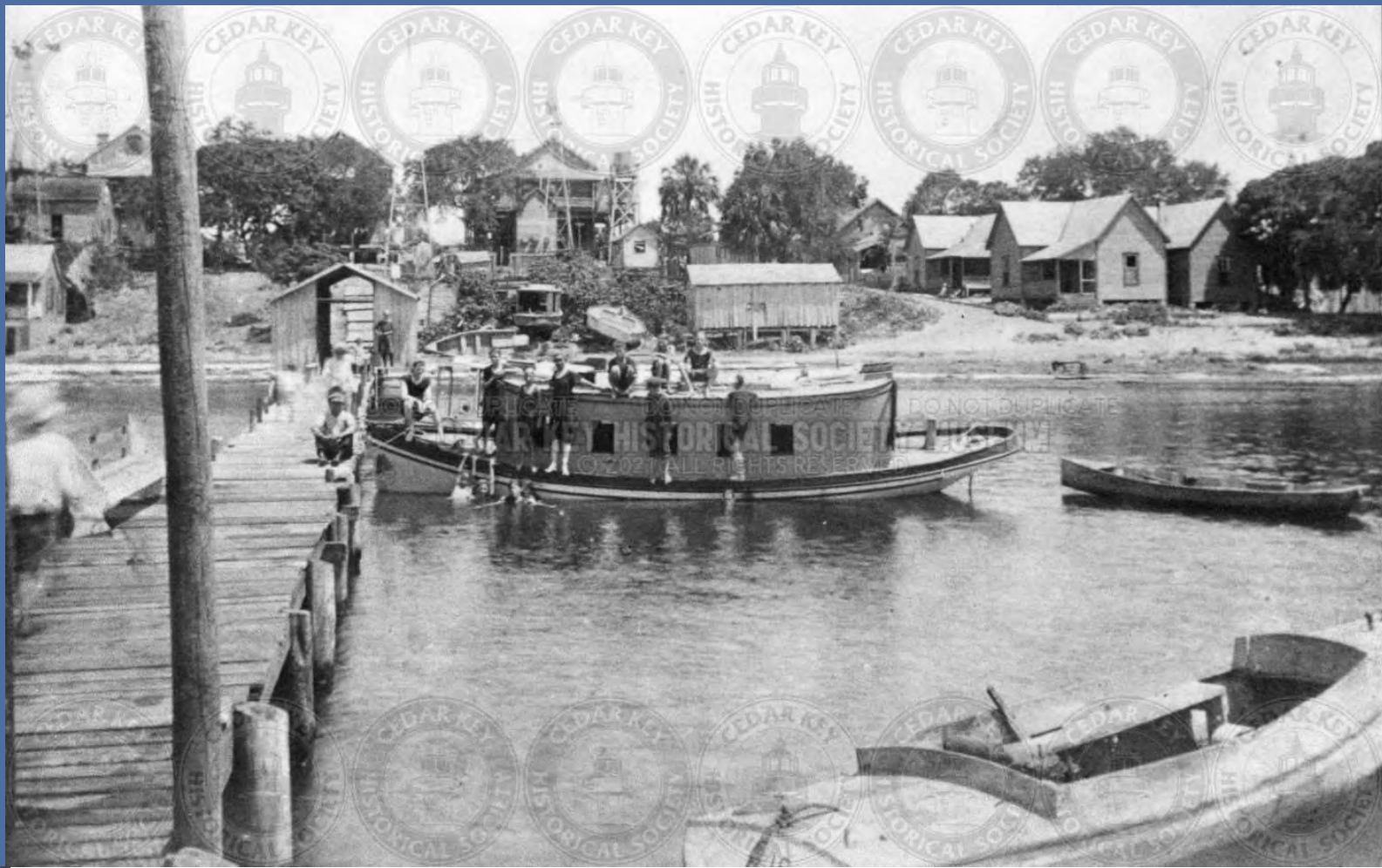


IMG02067
LOOKING SE FROM BISHOP'S POINT



IMG02068

GULF SPRAY FROM PORT ARTHUR, TEXAS - YOUNG BOYS HELPED ROLL BARRELS OF OIL FOR TEN CENTS A BARREL



IMG02069
BATHING DOCK BUILT IN 1920'S ON BEACH BELOW WHITEHOUSE HOTEL



IMG02070

PETE BAYLOR'S FISHHOUSE, LATER LEASED BY WILSON WALKER



IMG02071

BOAT COMING INTO BIG DOCK, BRICE HOUSE ON LEFT WITH THATCHED ROOF.



IMG02072

WALT WADLEY'S FISHHOUSE IN GOOSE COVE, DESTROYED BY HIGH WATER IN 1960.

Below: The Roven Gambler moored at C.G. Base in St. Pete. after being unloaded. Notice difference in free board. (June 13, 1932)



NOT DUPLICATED
CEDAR KEY HISTORICAL SOCIETY MUSEUM
© 2021 ALL RIGHTS RESERVED



Above: The Roven Gambler en route from Cedar Key to St. Pete. loaded with contraband liquor. (6/13/1932)

IMG02073

BOAT CALLED ROVEN GAMBLER IN ROUTE FROM CEDAR KEY TO ST. PETE LOADED WITH CONTRABAND LIQUOR



IMG02074

CAPTAIN MAC FUELING AT STANDARD OIL DOCK, BRICE HOUSE TO RIGHT



IMG02075

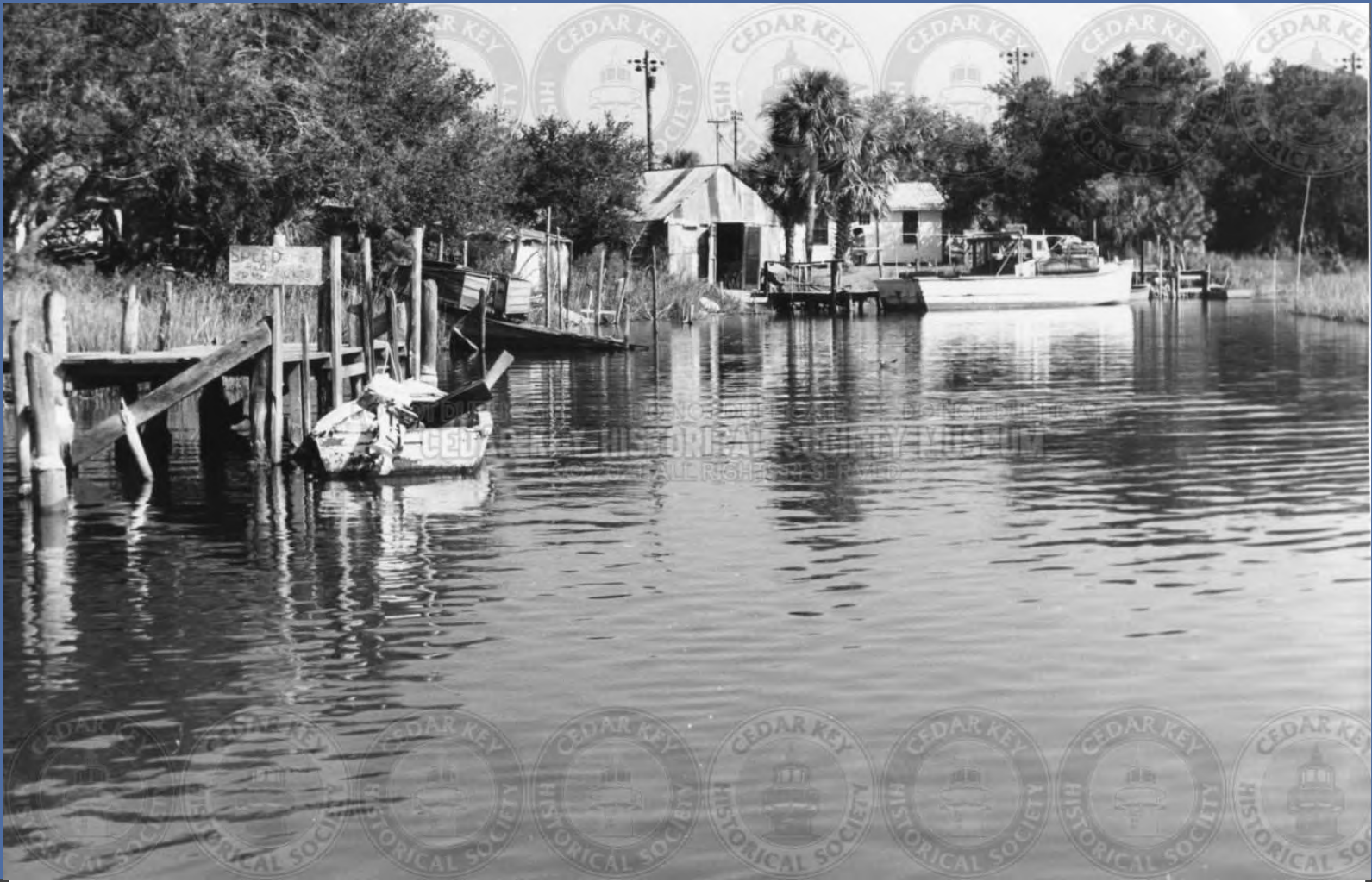
MILTON MCCAIN'S FISHHOUSE AND BOAT TATER ON TYRE CREEK CANAL



IMG02076
MILTON MCCAIN'S BOAT JESSE



IMG02077
LAUNCH AND SKIFFS WITH NETS ON SPREAD



IMG02078
BOATS IN TYRE CREEK



IMG02079
SHRIMP BOATS AT BIG DOCK (3)



IMG02080

ALBERT MCCAIN, JR.'S FATHER, FISHHOUSE IN BACK BAYOU NEAR LEO COLLINS HOME.



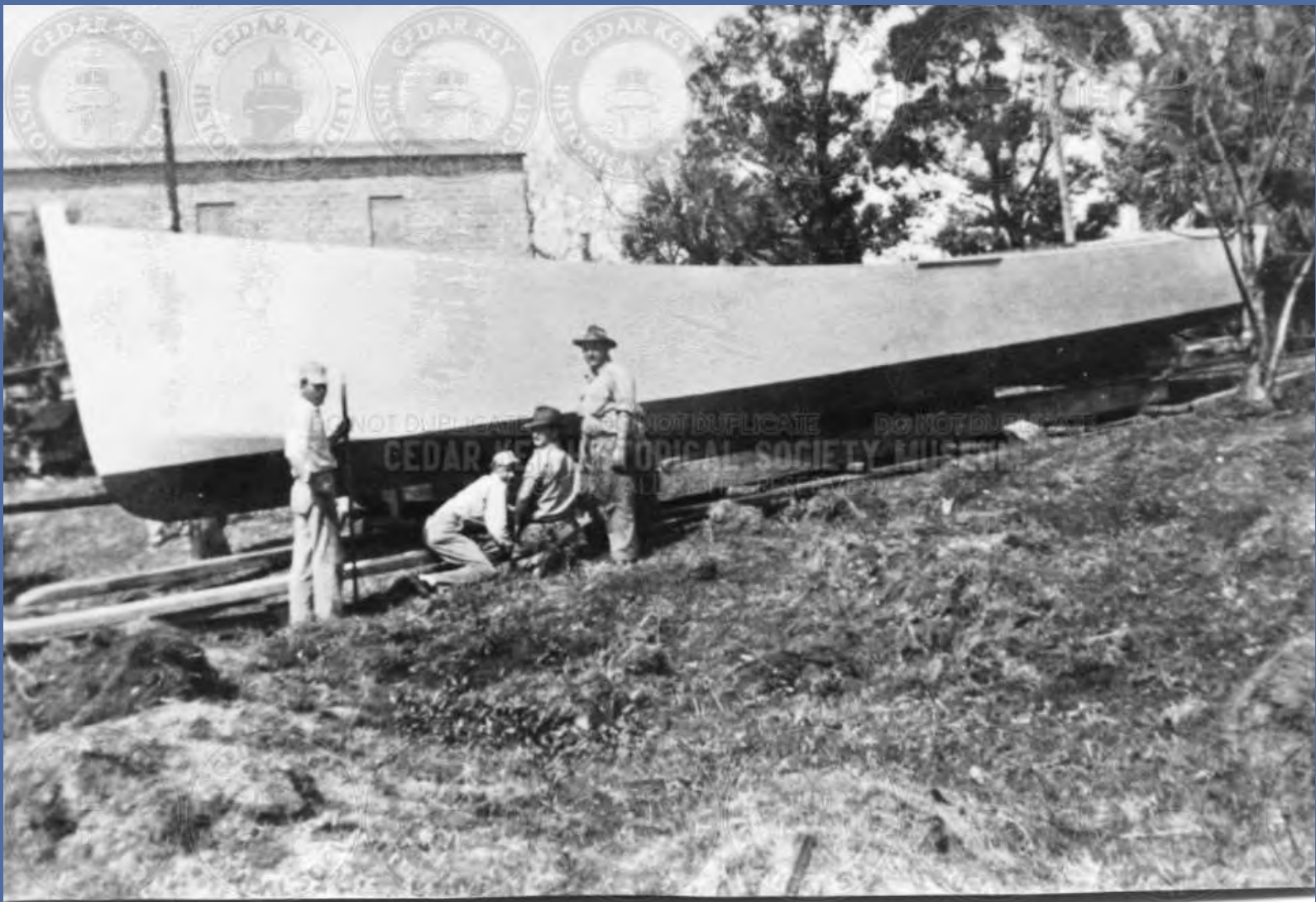
IMG02081
BOAT TOWED TO SUWANNEE WITH NET SPREAD



IMG02082
WRECKING CREW AT STANDARD OIL DOCK



IMG02083
STEAMBOAT WITH BARGES

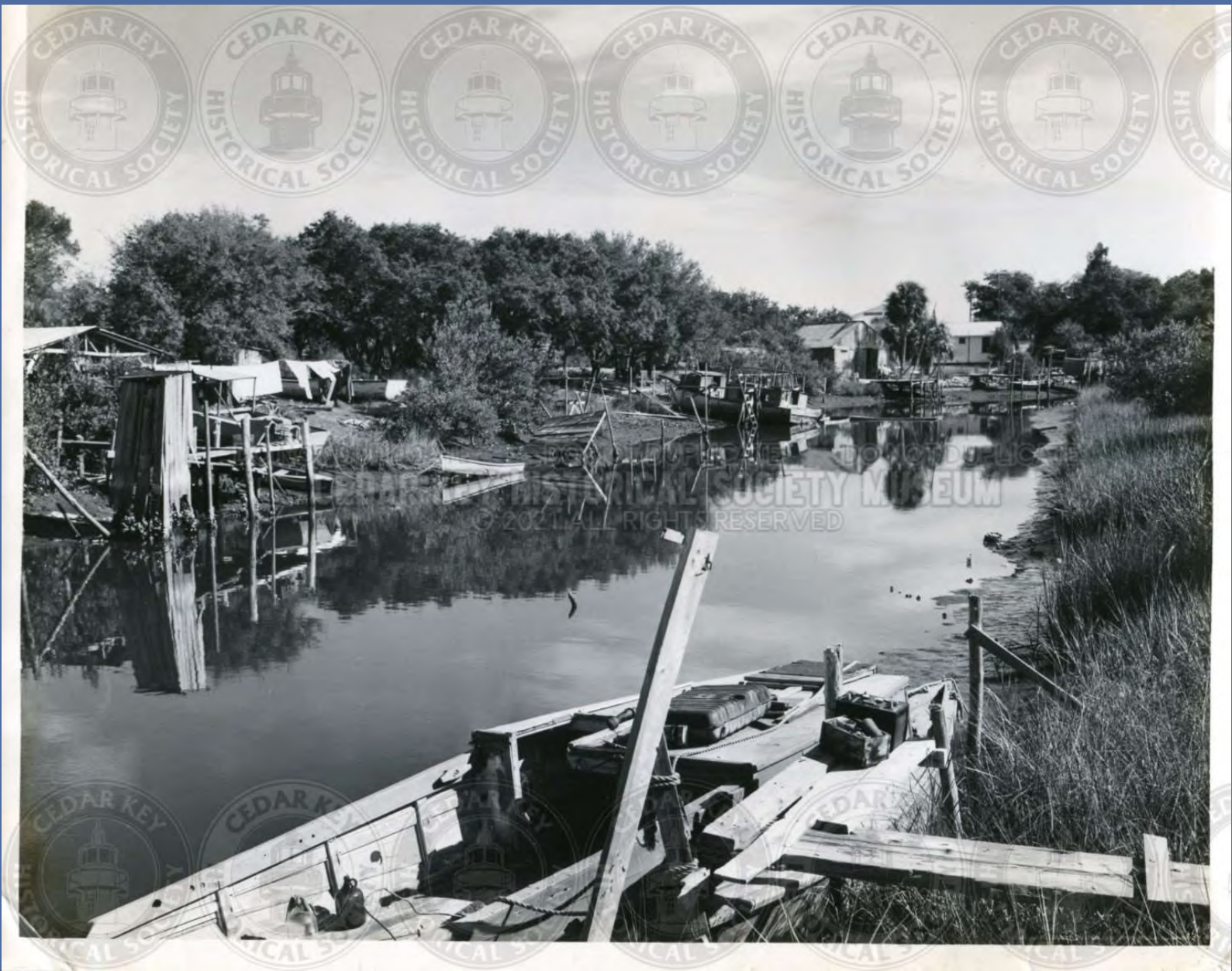


IMG02084
IMG00107 PREVIOUS IMAGE ID



IMG02085

BOATS AND NET SPREAD IN BACK BAYOU BEHIND NAPA FORMERLY ROGERS GARAGE



IMG02086

TYRE CREEK WITH OLD OUTHOUSE ON LEFT, BOAT RUIN ACROSS FROM BROOKES CAMPBELL'S



IMG02087

BOATS AT NO 2 CANAL LOOKING EAST FROM BAYLOR'S FISHHOUSE, HERBERT COULTER'S BOAT IN CENTER



IMG02088
SHRIMP BOATS AND YACHT AT BIG DOCK



IMG02089

BIRDDOG DRIVEN BY BILL OSTEEN WITH SON CHAD



IMG02090
MISS CALEDONIA OWNED BY QUITMAN HODGES

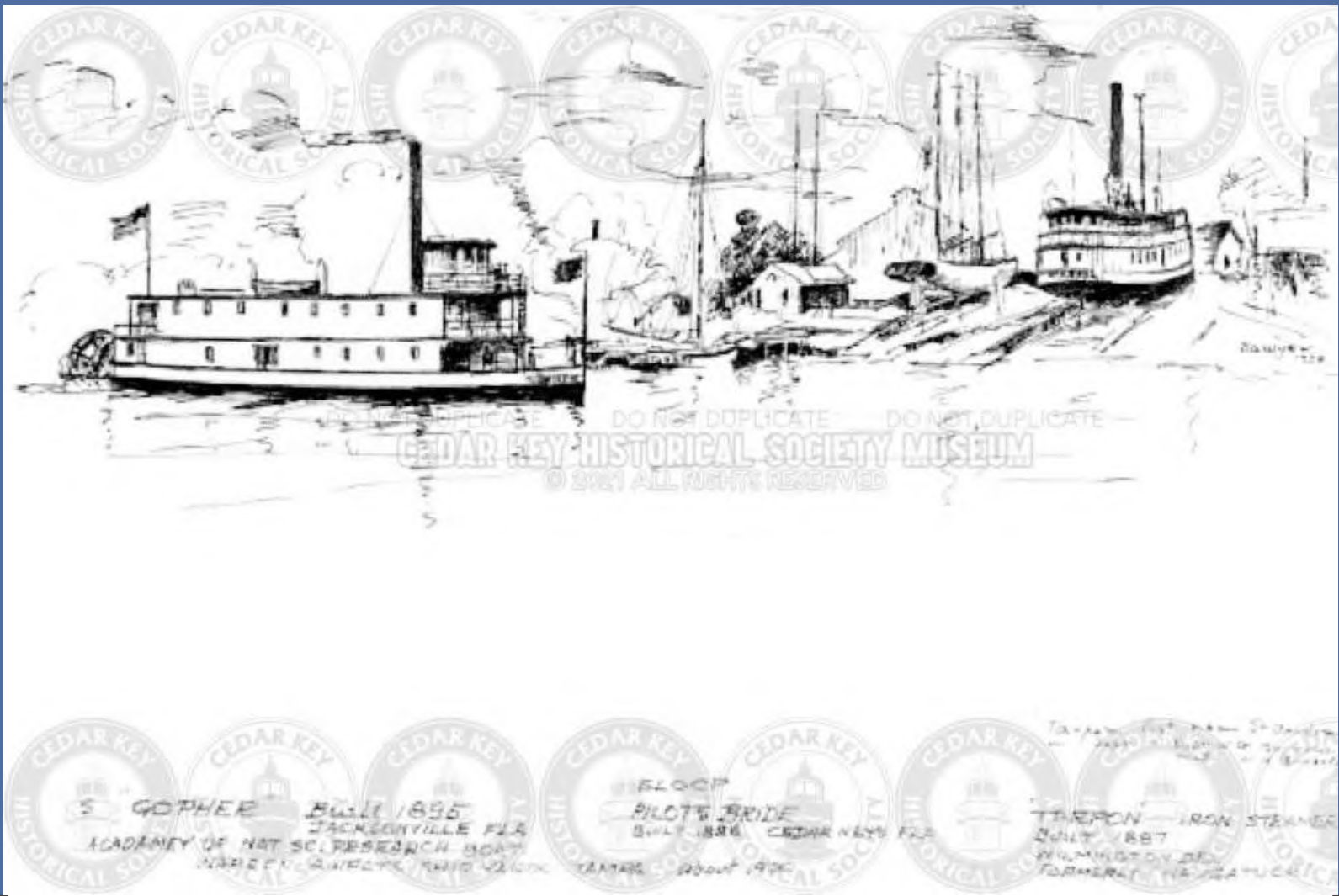


IMG02091

SPONGE DOCK WITH TURTLE CRAWL AND SPONGE BOATS WITH GULF OIL DOCK AND DOG ISLAND IN BACKGROUND



IMG02092
SHRIMP BOAT MORNING STAR



IMG02093
IMG00108 PREVIOUS IMAGE ID



IMG02094
IMG00092 PREVIOUS IMAGE ID



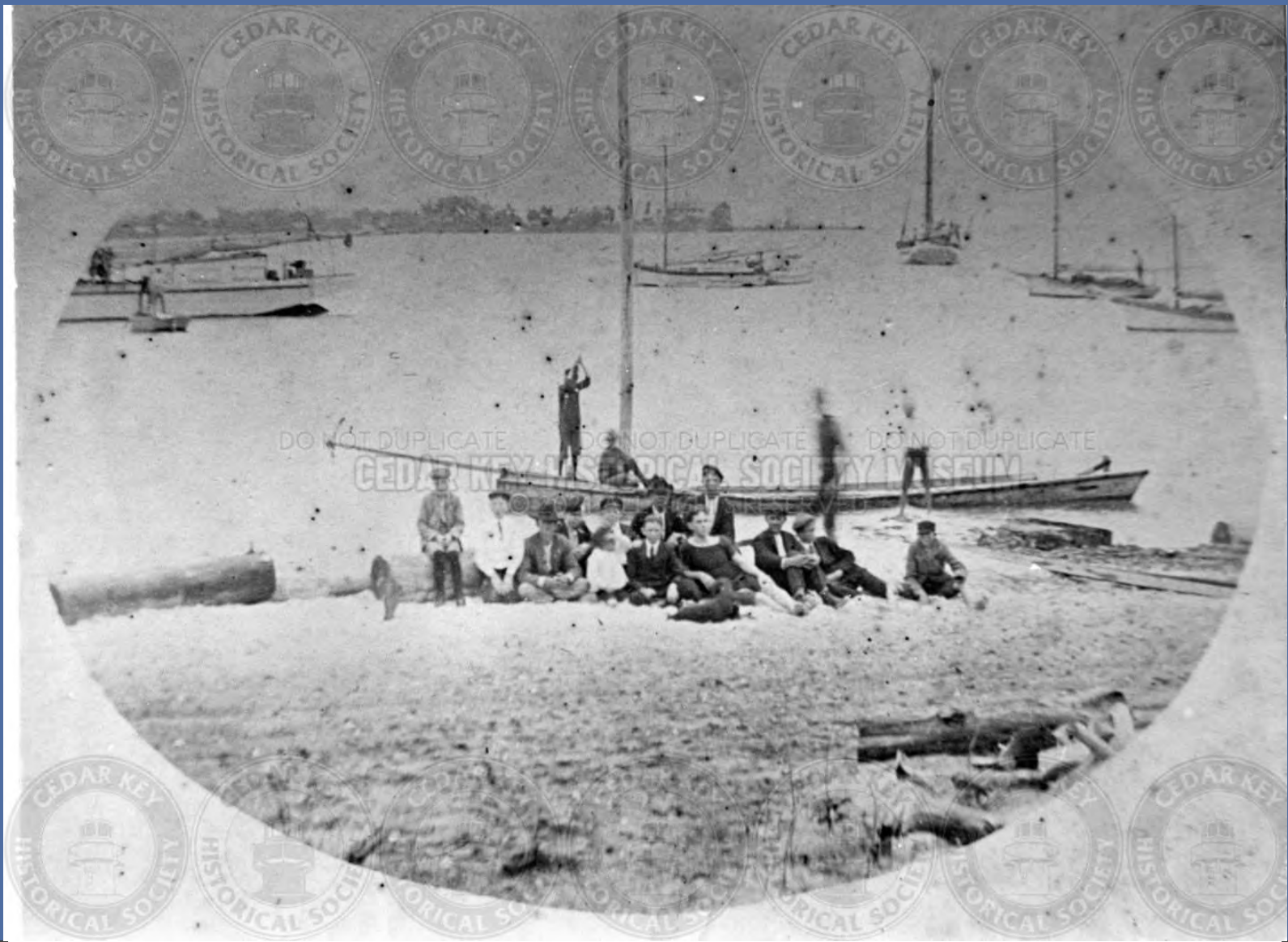
IMG02095
SKIFFS AND NET SPREADS IN GOOSE COVE



DO NOT DUPLICATE DO NOT DUPLICATE DO NOT DUPLICATE
CEDAR KEY HISTORICAL SOCIETY MUSEUM
© 2021 ALL RIGHTS RESERVED

IMG02096

LAUNCH AND SKIFFS WITH NET SPREADS IN GOOSE COVE



IMG02097
IMG00253 PREVIOUS IMAGE ID



DO NOT DUPLICATE DO NOT DUPLICATE DO NOT DUPLICATE
CEDAR KEY HISTORICAL SOCIETY MUSEUM
© 2021 ALL RIGHTS RESERVED

IMG02098

WATER FRONT ON 1ST ST., ATSENA OTIE IN BACKGROUND



"The Annie", a 45 foot sloop built at Cedar Keys in 1892.

IMG02099

THE ANNIE, A 45FT. SLOOP BUILT AT CEDAR KEY IN 1892

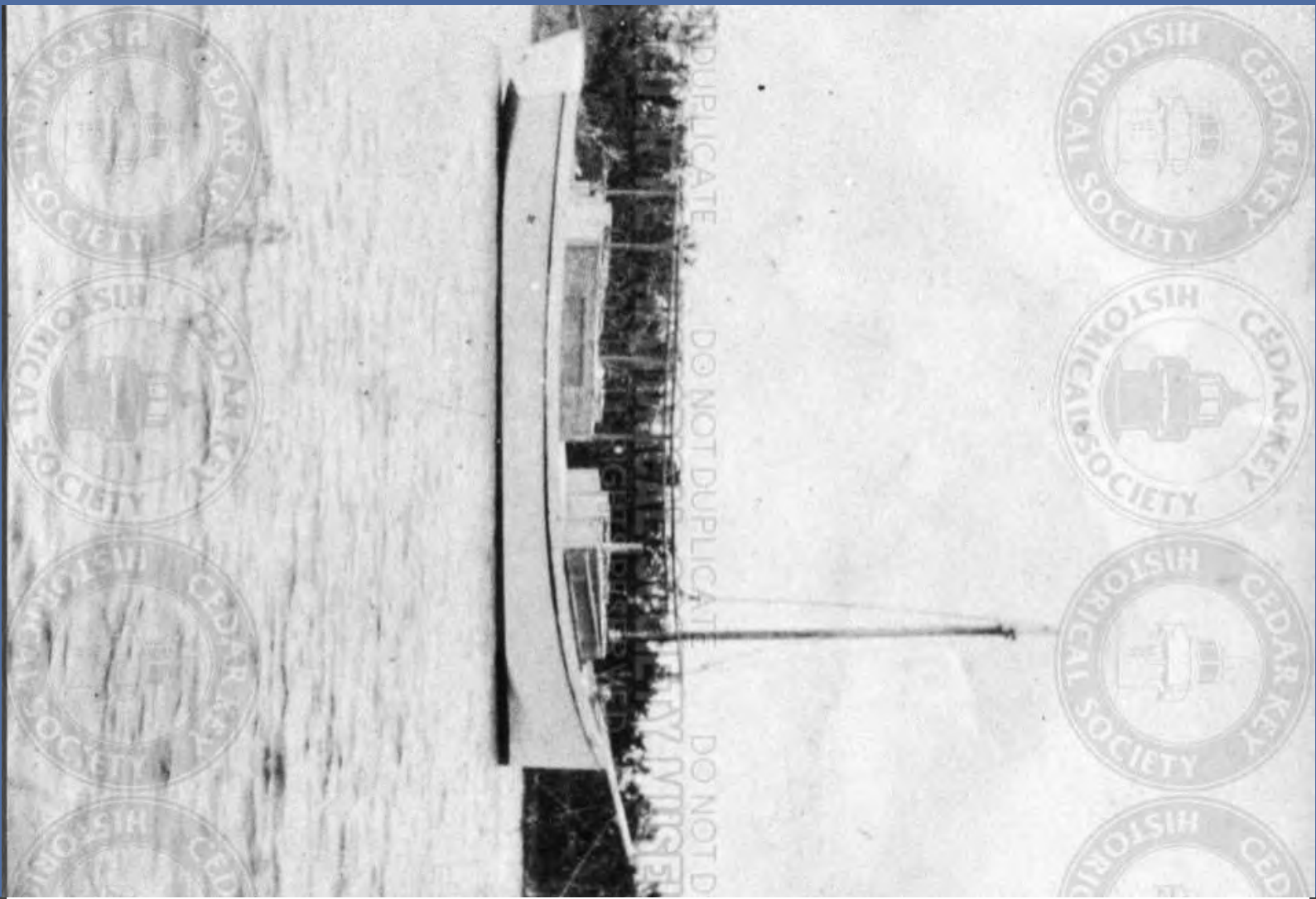


IMG02100
IMG00653 PREVIOUS IMAGE ID

Cedar Key, Fla.



IMG02101
IMG01179 PREVIOUS IMAGE ID



IMG02102
IMG00170 PREVIOUS IMAGE ID



7 #43

5A

DO NOT DUPLICATE DO NOT DUPLICATE
CEDAR KEY HISTORICAL SOCIETY MUSEUM
2020-2021 FUTURE RESTORATION



IMG02103
SPONGE BOATS



IMG02104

BURT H. WHITLEY PLEASURE BOAT FOR HUNTING AND FISHING USED ON THE SUWANEE AND WACCASASSA RIVERS



IMG02105
IMG10259 PREVIOUS IMAGE ID



IMG02106
WILL DELAINO'S BOAT THE ELLEN WHICH HE BUILT



IMG02107

KATHLEEN' IN 1917, BUILT BY GEORGE TOOKE AS A SAILBOAT LATER CONVERTED TO POWER BOAT



Sponger, Cedar Key, Florida, on the Gulf.

IMG02108

SPONGE BOAT FROM TARPON SPRINGS AT CEDAR KEY DOCK



IMG02109

SAM WHITE'S BOAT, THE ELOISE, HE WAS ORIGINAL OWNER OF THE WHITE HOTEL, THE WHIDDONS RAN THE HOTEL IN THE 1930S



IMG02110

SAM WHITE'S BOAT, THE ELOISE (CANVAS TOP) SEE IMG10307



Goose Cove

IMG02111

JOE RAINS' BOAT ON GOOSE COVE



IMG02112
SHRIMP BOATS AT THE BIG DOCK, 1940S